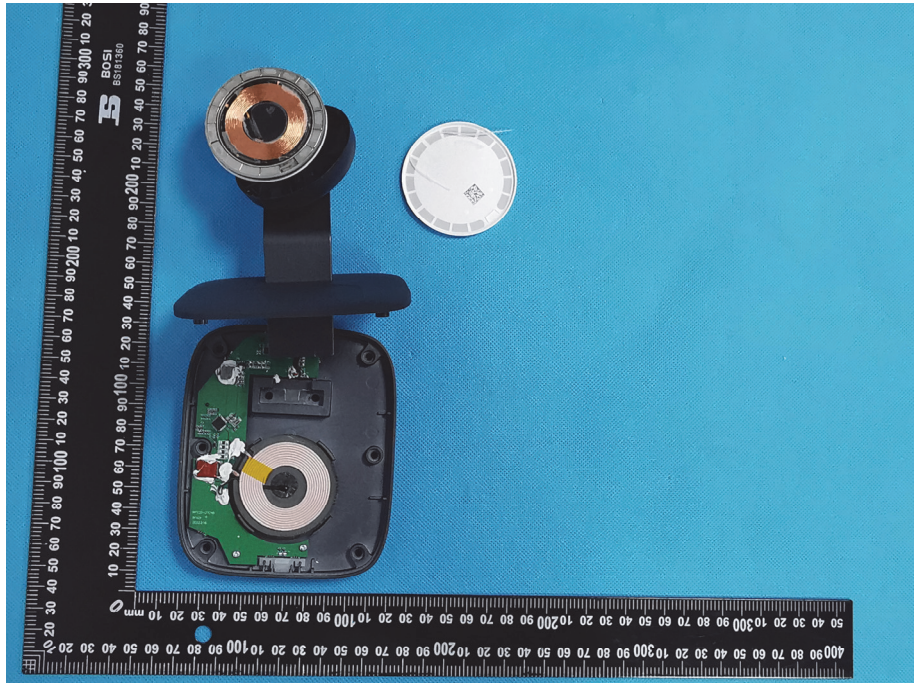
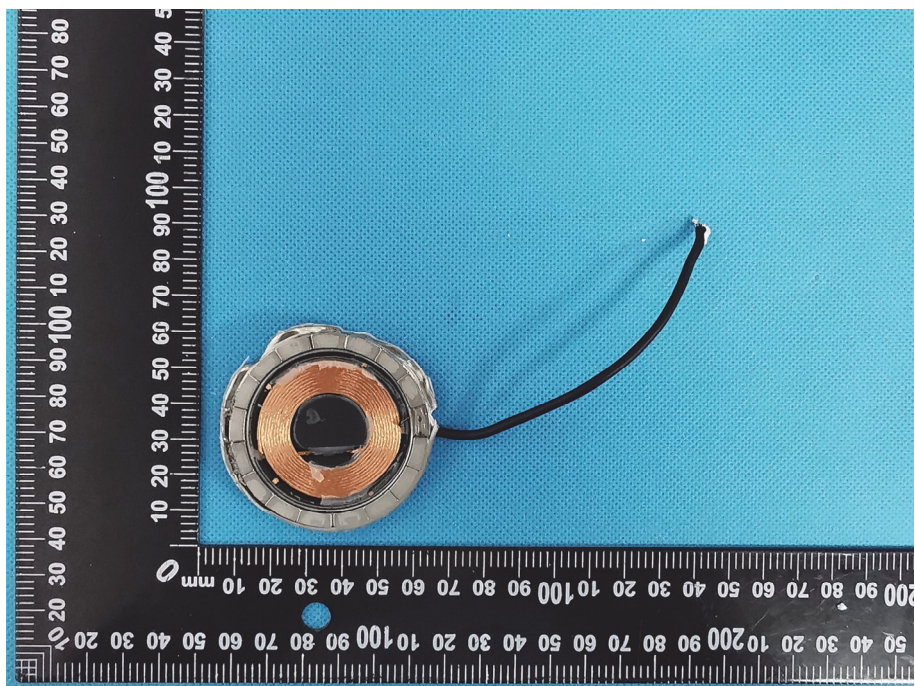


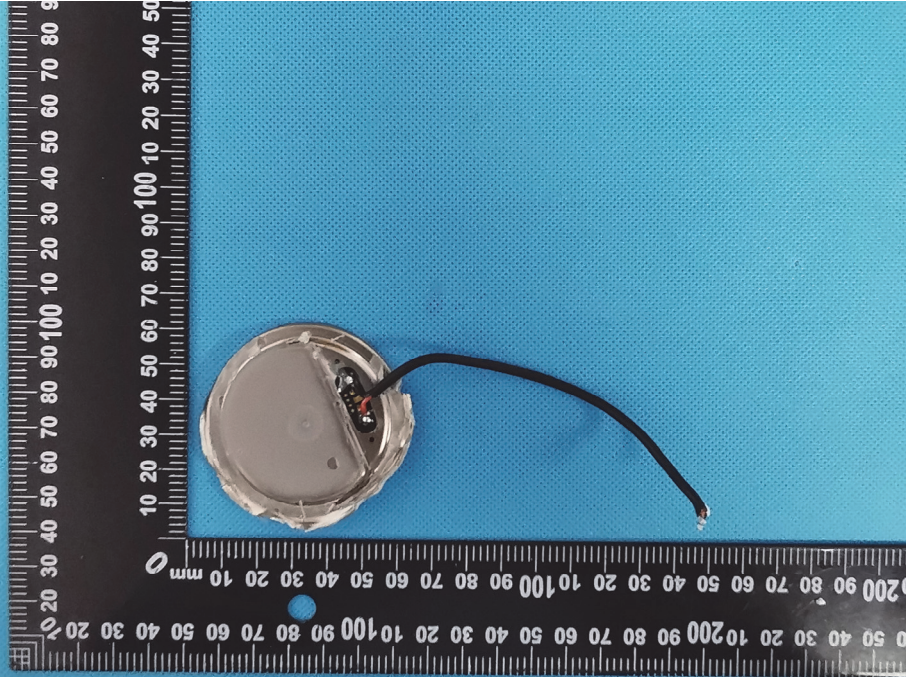
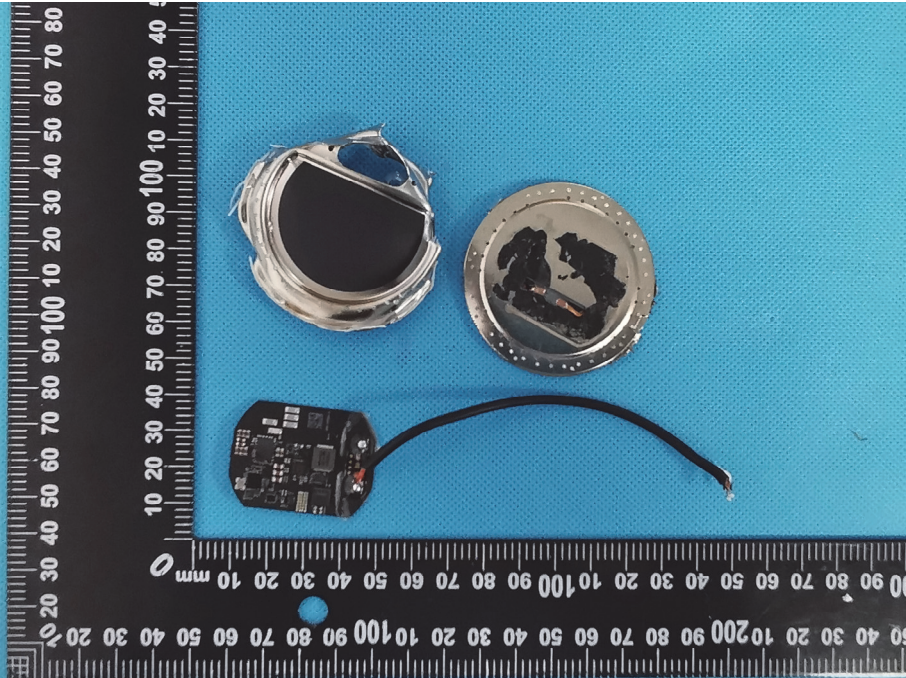
### EXHIBIT 3 - EUT INTERNAL PHOTOGRAPHS

**EUT Housing and Board View 1**



**EUT Housing and Board View 2**



|  |  |
|--|--|
| <p><b>EUT Housing and Board View 3</b></p> |  A photograph showing a circular, clear plastic housing containing a printed circuit board (PCB) assembly. A black cable is connected to the board. The assembly is placed on a blue textured surface next to a black ruler with white markings in millimeters. The ruler is oriented vertically and horizontally, providing a scale for the component's size.   |
| <p><b>EUT Housing and Board View 4</b></p> |  A photograph showing the disassembled components of the EUT housing and board. The clear plastic housing is shown in two pieces, one of which is partially broken. The PCB assembly is shown separately, revealing various electronic components. A black cable is also visible. The components are placed on a blue textured surface next to a black ruler with white markings in millimeters, similar to the first view. |

