

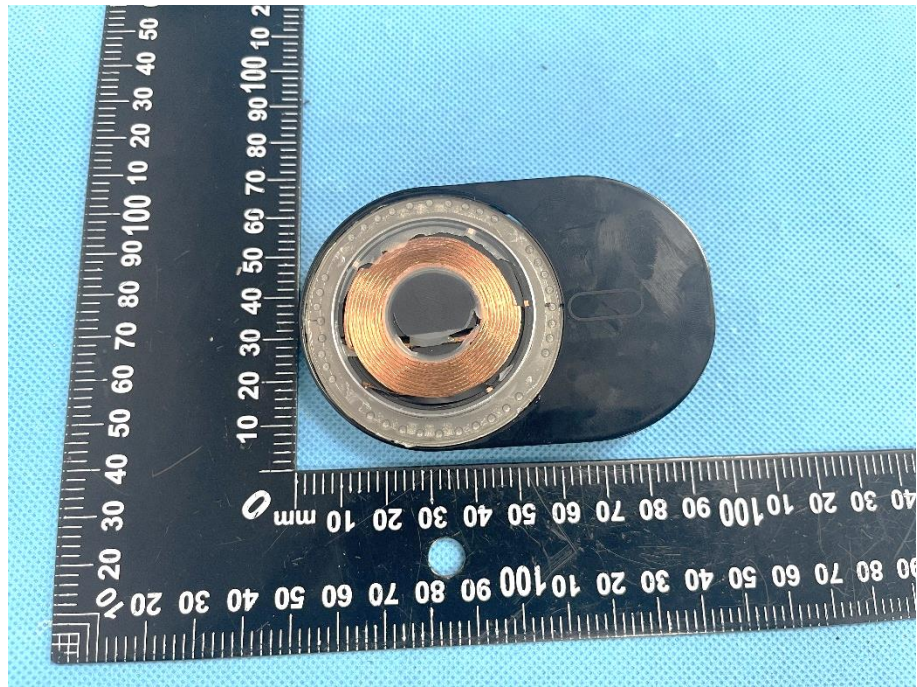


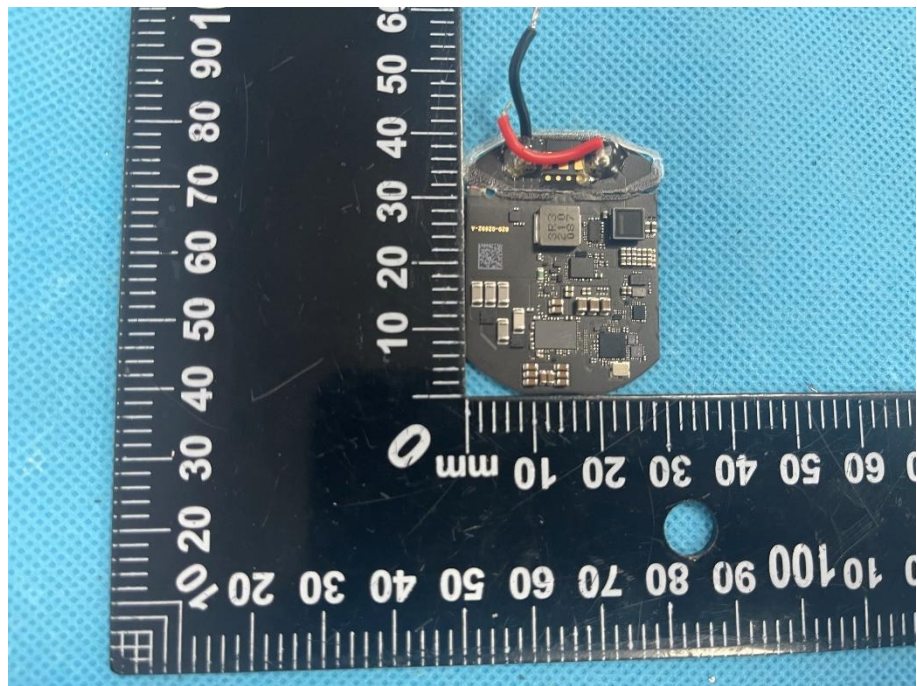
EXHIBIT 3 - EUT INTERNAL PHOTOGRAPHS

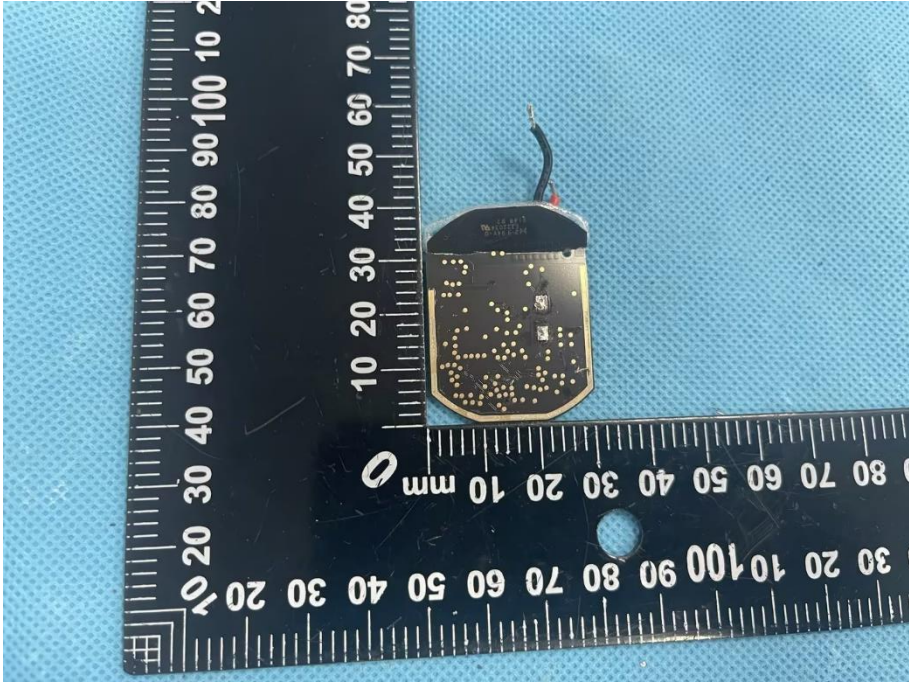
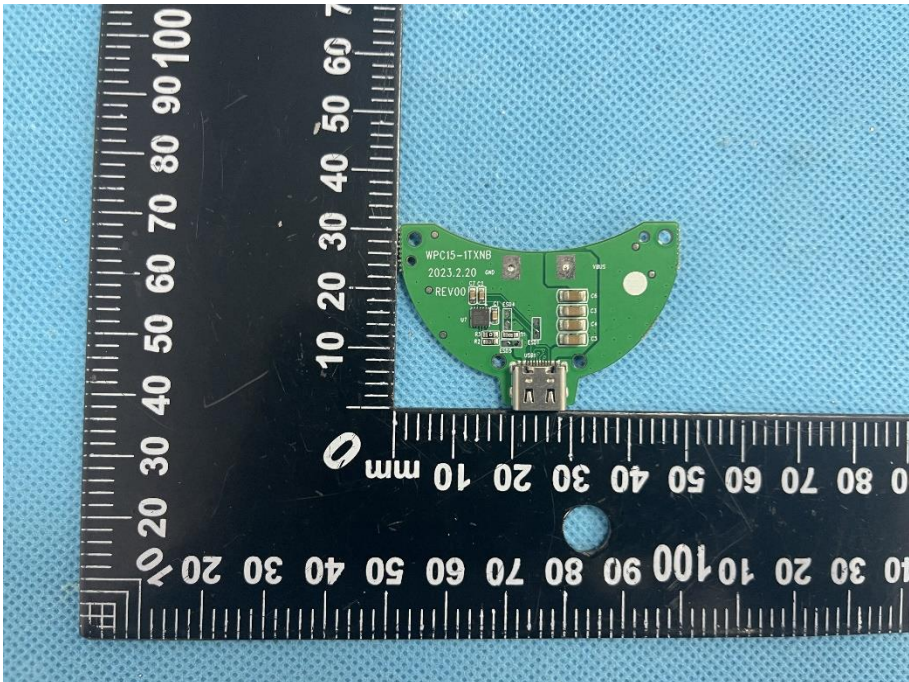
<p>EUT Housing and Board View 1</p>	 A photograph showing the top view of a black plastic EUT housing and a circular metal component. The housing is on the left, and the metal component is on the right. A black ruler with white markings is placed below the components for scale. The ruler shows measurements in millimeters, with markings every 10 mm and sub-markings every 1 mm. The background is a light blue textured surface.
<p>EUT Housing and Board View 2</p>	 A photograph showing the bottom view of the EUT housing and the internal green printed circuit board (PCB). The housing is on the left, and the PCB is on the right. A black ruler with white markings is placed below the components for scale. The ruler shows measurements in millimeters, with markings every 10 mm and sub-markings every 1 mm. The background is a light blue textured surface.

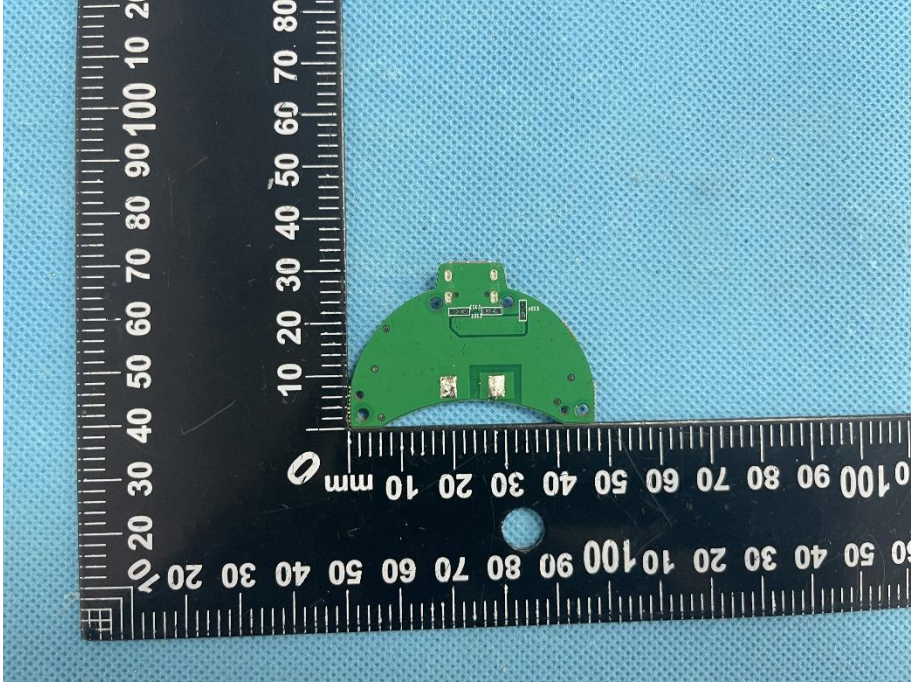
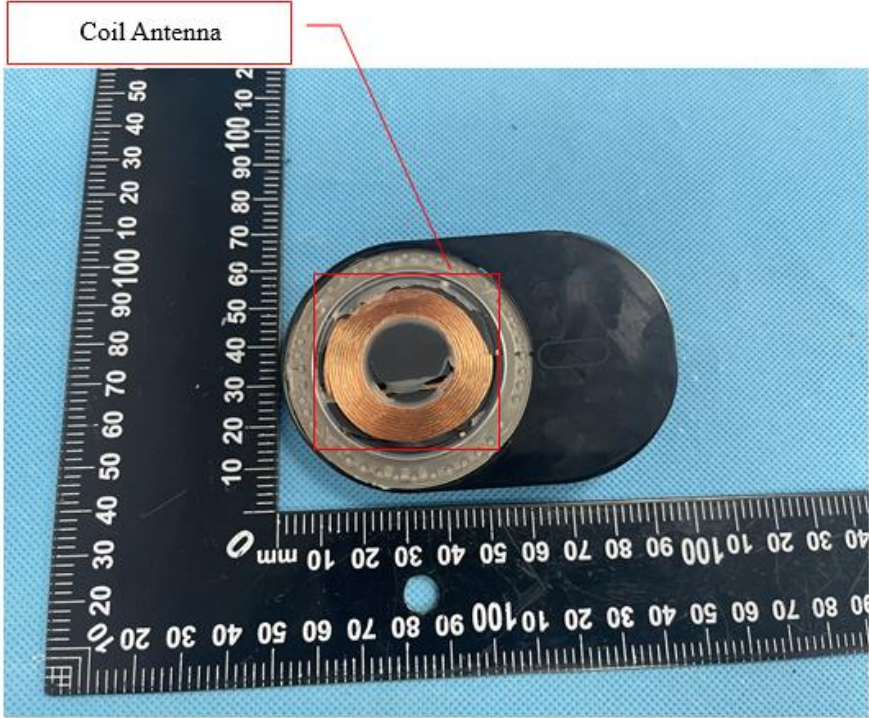
**EUT Housing and
Board View 3**



**Solder
Board-Component
View 1**



<p>Solder Board-Component View 2</p>	 A photograph of a small, dark-colored solder board component. The component is rectangular with a curved top edge and is populated with numerous small, gold-colored solder balls. It is positioned next to a black ruler with white markings for scale. The ruler shows centimeter and millimeter increments. The background is a light blue textured surface.
<p>Solder Board-Component View 3</p>	 A photograph of a green solder board component. The component is semi-circular and features a USB-A connector at the bottom edge. It is populated with various electronic components, including a microcontroller and several surface-mount components. Text on the board includes "WPC15-ITXNB", "2023.2.20", and "REV00". It is positioned next to a black ruler with white markings for scale. The background is a light blue textured surface.

<p>Solder Board-Component View 4</p>	 <p>A photograph of a green solder board component, likely a coil antenna, placed on a blue textured surface. A black ruler with white markings is positioned vertically and horizontally to provide scale. The component is semi-circular and has several small components and solder joints on its surface.</p>
<p>Antenna View</p>	 <p>A photograph showing the internal coil antenna structure of the component. The coil is made of copper wire and is visible through a circular opening in the component. A red box highlights the coil, and a red line points to it from a label "Coil Antenna" located in a white box at the top left of the image. A black ruler with white markings is positioned vertically and horizontally to provide scale.</p>