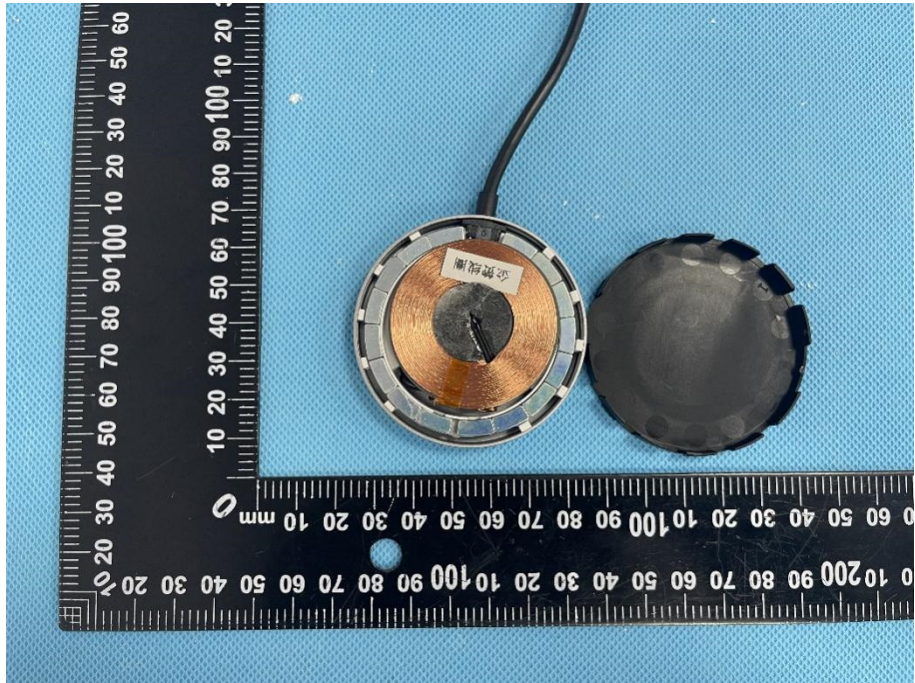
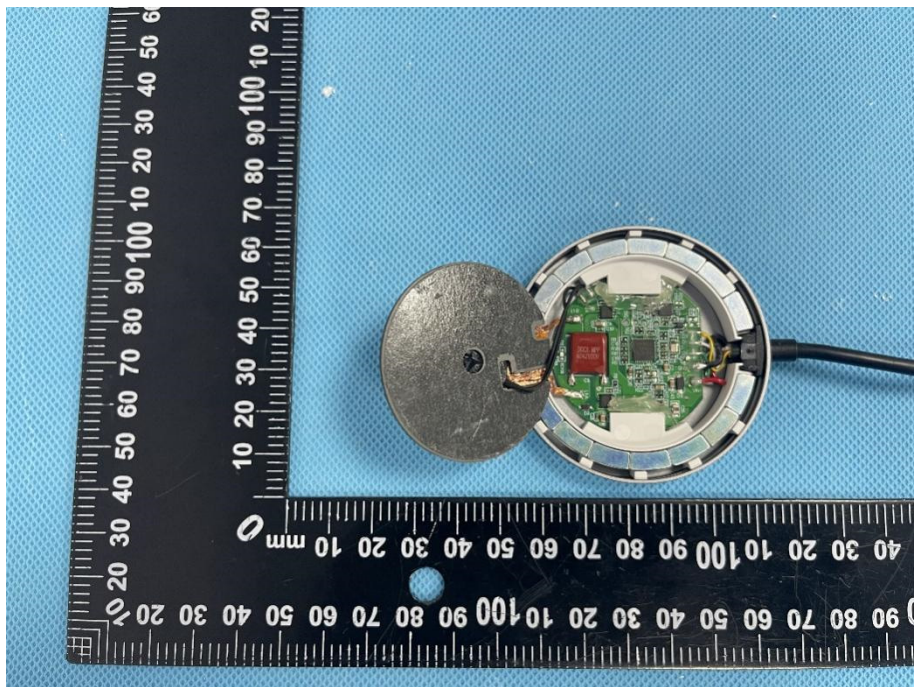


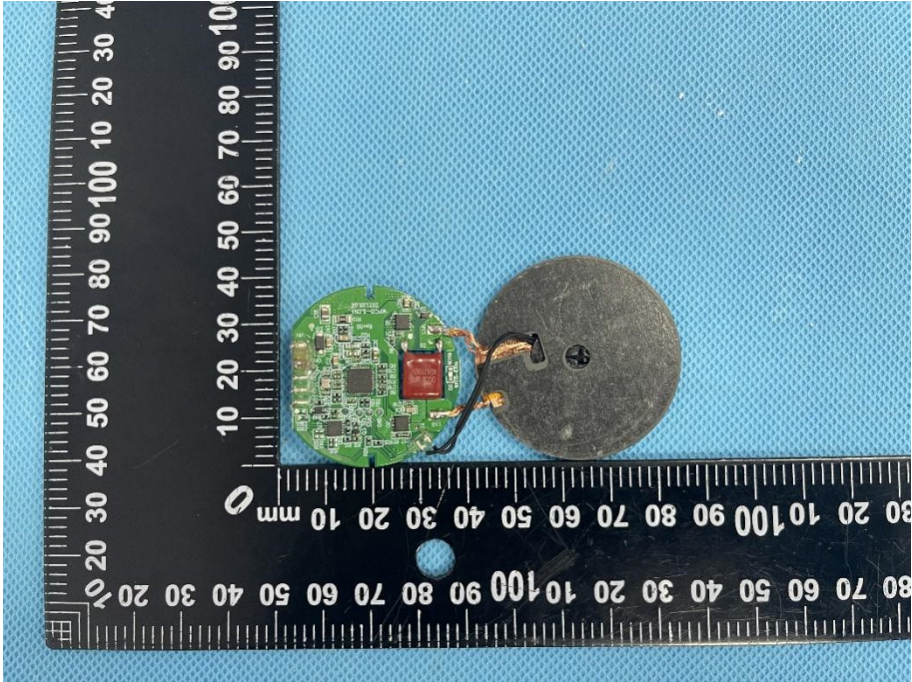
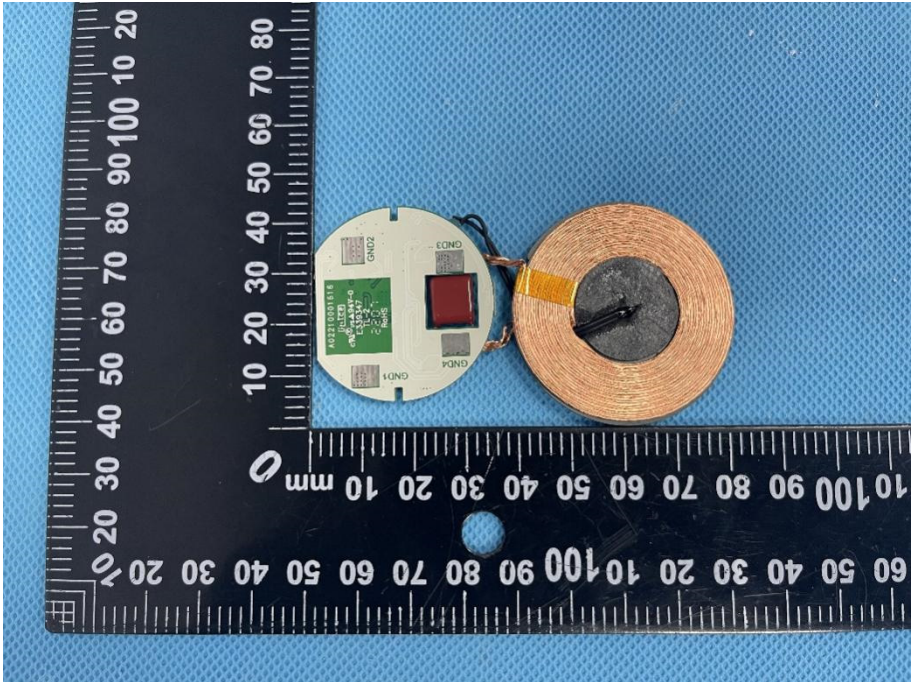
### EXHIBIT 3 - EUT INTERNAL PHOTOGRAPHS

**EUT Housing and Board View 1**

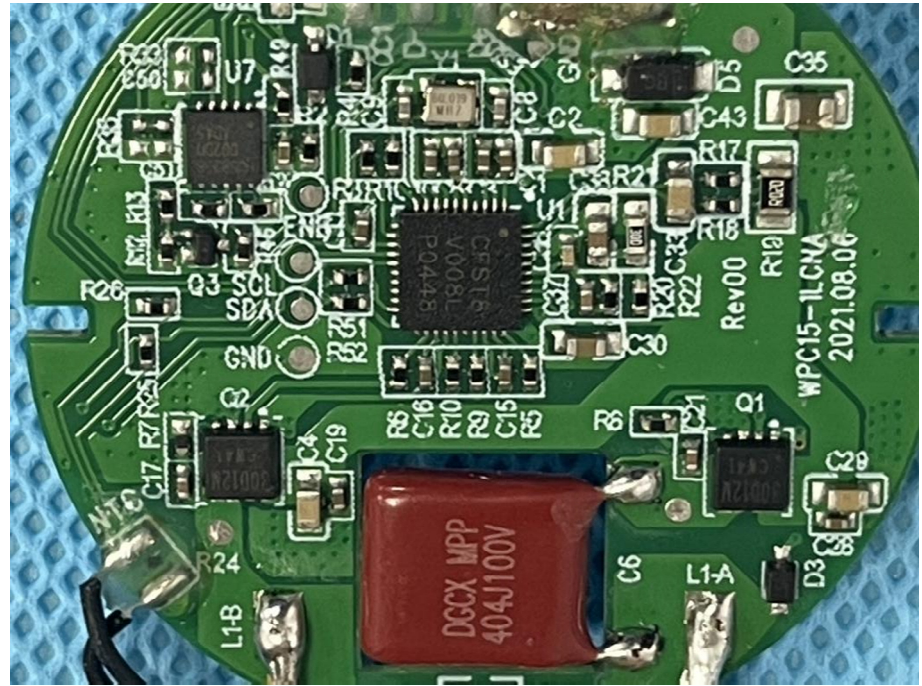


**EUT Housing and Board View 2**



<p><b>Solder Board-Component View 1</b></p>	 <p>A photograph showing the top view of a circular solder board component. The component consists of a green printed circuit board (PCB) with various electronic components, including a red component and several small surface-mount components. It is connected to a circular metal pad with a central screw. The component is placed on a blue textured surface next to a black ruler with white markings in millimeters. The ruler shows measurements from 0 to 100 mm.</p>
<p><b>Solder Board-Component View 2</b></p>	 <p>A photograph showing the bottom view of the same circular solder board component. The PCB is white with a green component and several ground pads labeled GND1, GND2, GND3, and GND4. It is connected to a circular metal pad with a central screw. The component is placed on a blue textured surface next to a black ruler with white markings in millimeters. The ruler shows measurements from 0 to 100 mm.</p>

Solder Board-Component View 3



Antenna View

Coil Antenna

