



## **FCC REPORT**

**Applicant:** CE LINK LIMITED

**Address of Applicant:** Building G, Li Cheng Technology Industrial Zone, Gong He Village, Sha Jing Town, Shen Zhen 518104, China

**Manufacturer/Factory:** CE LINK LIMITED

**Address of Manufacturer/Factory:** Building G, Li Cheng Technology Industrial Zone, Gong He Village, Sha Jing Town, Shen Zhen 518104, China

**Equipment Under Test (EUT)**

Product Name: Wireless Fast Charger

Model No.: WPC10-1MJ01

Trade Mark: CE-LINK

**FCC ID:** A4X-WPC101MJ01

**Applicable standards:** FCC CFR Title 47 Part 15 Subpart C

**Date of sample receipt:** March 03, 2018

**Date of Test:** March 04-12, 2018

**Date of report issued:** March 13, 2018

**Test Result :** PASS \*

\* In the configuration tested, the EUT complied with the standards specified above.

Authorized Signature:

**Robinson Lo**

**Laboratory Manager**

This results shown in this test report refer only to the sample(s) tested, this test report cannot be reproduced, except in full, without prior written permission of the company. The report would be invalid without specific stamp of test institute and the signatures of compiler and approver.

## 2 Version

Version No.	Date	Description
00	March 13, 2018	Original

Prepared By:

*Bill. Yuan*

Date:

March 13, 2018

**Project Engineer**

Check By:

*Andy. Wu*

Date:

March 13, 2018

**Reviewer**

## 3 Contents

	Page
1 COVER PAGE.....	1
2 VERSION.....	2
3 CONTENTS.....	3
4 TEST SUMMARY.....	4
4.1 MEASUREMENT UNCERTAINTY.....	4
5 GENERAL INFORMATION.....	5
5.1 GENERAL DESCRIPTION OF EUT.....	5
5.2 TEST MODE.....	6
5.3 DESCRIPTION OF SUPPORT UNITS.....	6
5.4 TEST FACILITY.....	6
5.5 TEST LOCATION.....	6
5.6 OTHER INFORMATION REQUESTED BY THE CUSTOMER.....	6
6 TEST INSTRUMENTS LIST.....	7
7 TEST RESULTS AND MEASUREMENT DATA.....	8
7.1 ANTENNA REQUIREMENT:.....	8
7.2 CONDUCTED EMISSIONS.....	9
7.3 RADIATED EMISSION METHOD.....	12
7.4 20dB OCCUPY BANDWIDTH.....	17
8 TEST SETUP PHOTO.....	18
9 EUT CONSTRUCTIONAL DETAILS.....	20

## 4 Test Summary

Test Item	Section in CFR 47	Result
Antenna requirement	15.203	Pass
AC Power Line Conducted Emission	15.207	Pass
Radiated Emission	15.209	Pass
20dB Bandwidth	15.215	Pass

*Pass: The EUT complies with the essential requirements in the standard.*

### 4.1 Measurement Uncertainty

Test Item	Frequency Range	Measurement Uncertainty	Notes
Radiated Emission	9kHz ~ 30MHz	$\pm 4.34\text{dB}$	(1)
Radiated Emission	30MHz ~ 1000MHz	$\pm 4.24\text{dB}$	(1)

Note (1): The measurement uncertainty is for coverage factor of k=2 and a level of confidence of 95%.

## 5 General Information

### 5.1 General Description of EUT

Product Name:	Wireless Fast Charger
Model No.:	WPC10-1MJ01
Serial No.:	WPC10-1MJ01-201803200001
Test sample(s) ID:	GTS201802000020-1
Sample(s) Status	Engineer sample
Hardware:	V1.0
Software:	V1.0
Operation Frequency:	111.5kHz ~ 205KHz
Modulation type:	Backscatter modulation
Antenna Type:	Inductive loop coil antenna
Antenna gain:	0dBi
Power supply:	Input: DC 5V 2A, 9V 1.67A Output: 5W

Note:

In section 15.31(m), regards to the operating frequency range less than 1 MHz, only the middle frequency of channel was selected to perform the test, and the selected channel see below:

Channel	Frequency
The lowest channel	N/A
The middle channel	158KHz
The Highest channel	N/A

## 5.2 Test mode

Transmitting mode	Keep the EUT in continuously transmitting and charging mode
<p><i>Remark: During the test, the test voltage was tuned from 85% to 115% of the nominal rated supply voltage, and found that the worst case was under the nominal rated supply condition. So the report just shows that condition's data.</i></p>	

## 5.3 Description of Support Units

Manufacturer	Description	Model	Serial Number	FCC Approval
SAMSUNG	Mobile Phone	S7EDGE	R28H835BJ2B	DOC
APPLE	USB Charger	A1399	N/A	N/A

## 5.4 Test Facility

<p>The test facility is recognized, certified, or accredited by the following organizations:</p> <ul style="list-style-type: none"> <li>• <b>FCC —Registration No.: 381383</b> Global United Technology Services Co., Ltd., Shenzhen EMC Laboratory has been registered and fully described in a report filed with the (FCC) Federal Communications Commission. The acceptance letter from the FCC is maintained in files. Registration 381383, January 08, 2018.</li> <li>• <b>Industry Canada (IC) —Registration No.: 9079A-2</b> The 3m Semi-anechoic chamber of Global United Technology Services Co., Ltd. has been registered by Certification and Engineering Bureau of Industry Canada for radio equipment testing with Registration No.: 9079A-2, August 15, 2016</li> </ul>
---

## 5.5 Test Location

All tests were performed at:
<p>Global United Technology Services Co., Ltd. No. 301-309, 3/F., Jinyuan Business Building, No.2, Laodong Industrial Zone, Xixiang Road, Baoan District, Shenzhen, Guangdong, China 518102 Tel: 0755-27798480 Fax: 0755-27798960</p>

## 5.6 Other Information Requested by the Customer

None.
-------

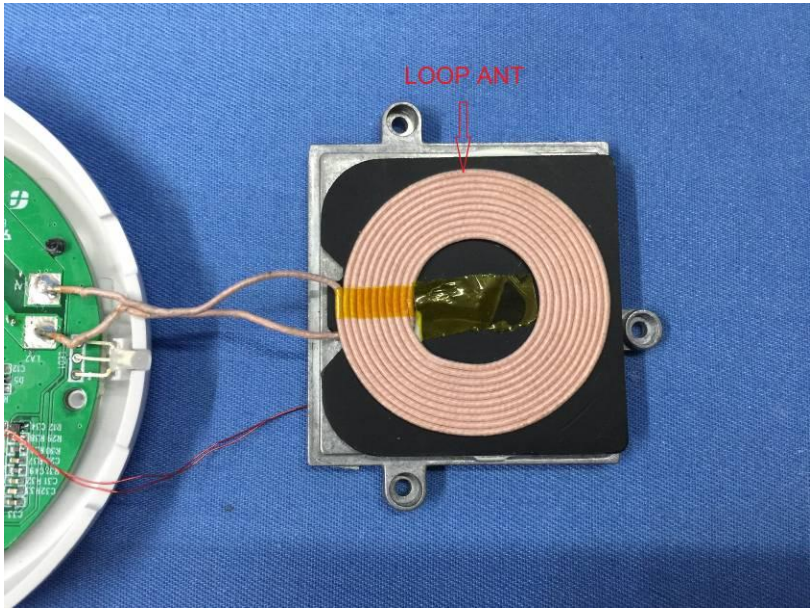
## 6 Test Instruments list

Radiated Emission:						
Item	Test Equipment	Manufacturer	Model No.	Inventory No.	Cal.Date (mm-dd-yy)	Cal.Due date (mm-dd-yy)
1	3m Semi- Anechoic Chamber	ZhongYu Electron	9.2(L)*6.2(W)* 6.4(H)	GTS250	July 03 2015	July 02 2020
2	Control Room	ZhongYu Electron	6.2(L)*2.5(W)* 2.4(H)	GTS251	N/A	N/A
3	Spectrum Analyzer	Agilent	E4440A	GTS533	June 26 2017	June 25 2018
4	EMI Test Receiver	Rohde & Schwarz	ESU26	GTS203	June 26 2017	June 25 2018
5	BiConiLog Antenna	SCHWARZBECK MESS-ELEKTRONIK	VULB9163	GTS214	June 26 2017	June 25 2018
6	Double -ridged waveguide horn	SCHWARZBECK MESS-ELEKTRONIK	9120D-829	GTS208	June 26 2017	June 25 2018
7	Horn Antenna	ETS-LINDGREN	3160	GTS217	June 26 2017	June 25 2018
8	EMI Test Software	AUDIX	E3	N/A	N/A	N/A
9	Coaxial Cable	GTS	N/A	GTS213	June 26 2017	June 25 2018
10	Coaxial Cable	GTS	N/A	GTS211	June 26 2017	June 25 2018
11	Coaxial cable	GTS	N/A	GTS210	June 26 2017	June 25 2018
12	Coaxial Cable	GTS	N/A	GTS212	June 26 2017	June 25 2018
13	Amplifier(100kHz-3GHz)	HP	8347A	GTS204	June 26 2017	June 25 2018
14	Amplifier(2GHz-20GHz)	HP	8349B	GTS206	June 26 2017	June 25 2018
15	Amplifier (18-26GHz)	Rohde & Schwarz	AFS33-18002 650-30-8P-44	GTS218	June 26 2017	June 25 2018
16	Band filter	Amindeon	82346	GTS219	June 26 2017	June 25 2018
17	Power Meter	Anritsu	ML2495A	GTS540	June 26 2017	June 25 2018
18	Power Sensor	Anritsu	MA2411B	GTS541	June 26 2017	June 25 2018

Conducted Emission:						
Item	Test Equipment	Manufacturer	Model No.	Inventory No.	Cal.Date (mm-dd-yy)	Cal.Due date (mm-dd-yy)
1	Shielding Room	ZhongYu Electron	7.3(L)x3.1(W)x2.9(H)	GTS252	May.16 2014	May.15 2019
2	EMI Test Receiver	R&S	ESCI 7	GTS552	June. 26 2017	June. 25 2018
3	Coaxial Switch	ANRITSU CORP	MP59B	GTS225	June. 26 2017	June. 25 2018
4	Artificial Mains Network	SCHWARZBECK MESS	NSLK8127	GTS226	June. 26 2017	June. 25 2018
5	Coaxial Cable	GTS	N/A	GTS227	N/A	N/A
6	EMI Test Software	AUDIX	E3	N/A	N/A	N/A
7	Thermo meter	KTJ	TA328	GTS233	June. 26 2017	June. 25 2018

## 7 Test results and Measurement Data

### 7.1 Antenna requirement:

<b>Standard requirement:</b>	FCC Part15 C Section 15.203
<p><b>15.203 requirement:</b></p> <p>An intentional radiator shall be designed to ensure that no antenna other than that furnished by the responsible party shall be used with the device. The use of a permanently attached antenna or of an antenna that uses a unique coupling to the intentional radiator, the manufacturer may design the unit so that a broken antenna can be replaced by the user, but the use of a standard antenna jack or electrical connector is prohibited.</p>	
<p><b>EUT Antenna:</b></p>	
<p><i>The antenna is Inductive loop coil antenna, the best case gain of the antenna is 0dBi.</i></p> 	

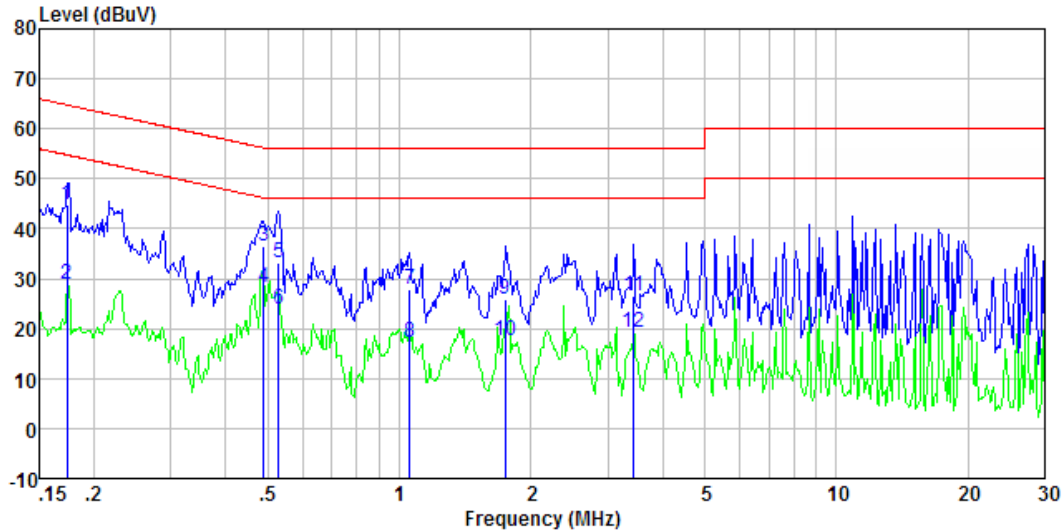


## 7.2 Conducted Emissions

Test Requirement:	FCC Part15 C Section 15.207														
Test Method:	ANSI C63.10:2013														
Test Frequency Range:	150KHz to 30MHz														
Class / Severity:	Class B														
Receiver setup:	RBW=9KHz, VBW=30KHz, Sweep time=auto														
Limit:	<table border="1"> <thead> <tr> <th rowspan="2">Frequency range (MHz)</th> <th colspan="2">Limit (dBuV)</th> </tr> <tr> <th>Quasi-peak</th> <th>Average</th> </tr> </thead> <tbody> <tr> <td>0.15-0.5</td> <td>66 to 56*</td> <td>56 to 46*</td> </tr> <tr> <td>0.5-5</td> <td>56</td> <td>46</td> </tr> <tr> <td>5-30</td> <td>60</td> <td>50</td> </tr> </tbody> </table> <p>* Decreases with the logarithm of the frequency.</p>	Frequency range (MHz)	Limit (dBuV)		Quasi-peak	Average	0.15-0.5	66 to 56*	56 to 46*	0.5-5	56	46	5-30	60	50
Frequency range (MHz)	Limit (dBuV)														
	Quasi-peak	Average													
0.15-0.5	66 to 56*	56 to 46*													
0.5-5	56	46													
5-30	60	50													
Test setup:	<p><i>Remark</i>  E.U.T: Equipment Under Test  LISN: Line Impedance Stabilization Network  Test table height=0.8m</p>														
Test procedure:	<ol style="list-style-type: none"> <li>1. The E.U.T and simulators are connected to the main power through a line impedance stabilization network (L.I.S.N.). This provides a 50ohm/50uH coupling impedance for the measuring equipment.</li> <li>2. The peripheral devices are also connected to the main power through a LISN that provides a 50ohm/50uH coupling impedance with 50ohm termination. (Please refer to the block diagram of the test setup and photographs).</li> <li>3. Both sides of A.C. line are checked for maximum conducted interference. In order to find the maximum emission, the relative positions of equipment and all of the interface cables must be changed according to ANSI C63.10 on conducted measurement.</li> </ol>														
Test Instruments:	Refer to section 6.0 for details														
Test mode:	Refer to section 5.2 for details														
Test results:	Pass														

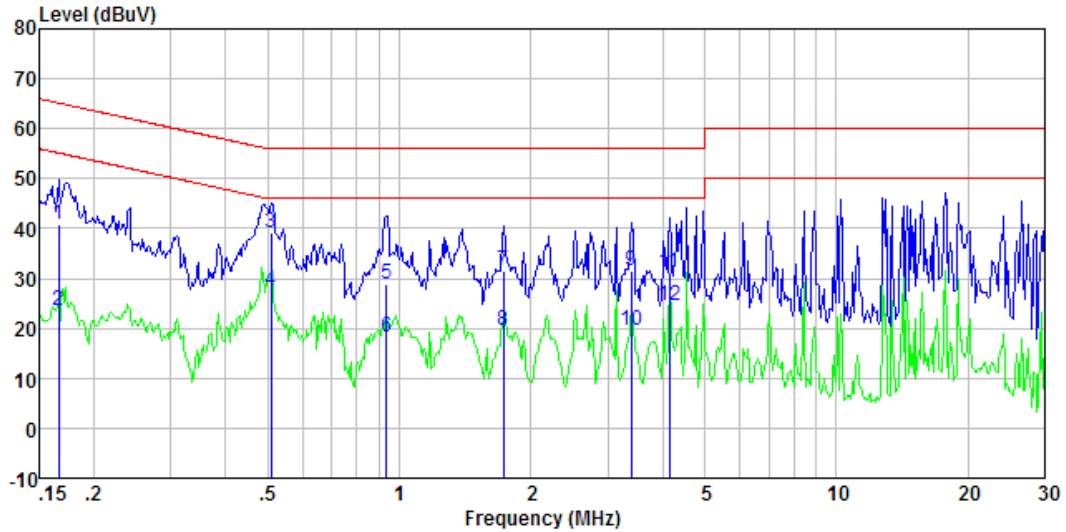
### Measurement data:

Line:



Freq MHz	Reading level dBuV	IISN/ISN factor dB	Cable loss dB	level dBuV	Limit level dBuV	Over limit dB	Remark
0.174	44.35	0.40	0.09	44.84	64.77	-19.93	QP
0.174	28.23	0.40	0.09	28.72	54.77	-26.05	Average
0.489	35.92	0.32	0.11	36.35	56.19	-19.84	QP
0.489	27.87	0.32	0.11	28.30	46.19	-17.89	Average
0.529	32.91	0.31	0.11	33.33	56.00	-22.67	QP
0.529	23.47	0.31	0.11	23.89	46.00	-22.11	Average
1.054	27.37	0.20	0.15	27.72	56.00	-28.28	QP
1.054	16.90	0.20	0.15	17.25	46.00	-28.75	Average
1.744	25.59	0.20	0.17	25.96	56.00	-30.04	QP
1.744	17.28	0.20	0.17	17.65	46.00	-28.35	Average
3.436	26.30	0.20	0.18	26.68	56.00	-29.32	QP
3.436	19.00	0.20	0.18	19.38	46.00	-26.62	Average

**Neutral:**



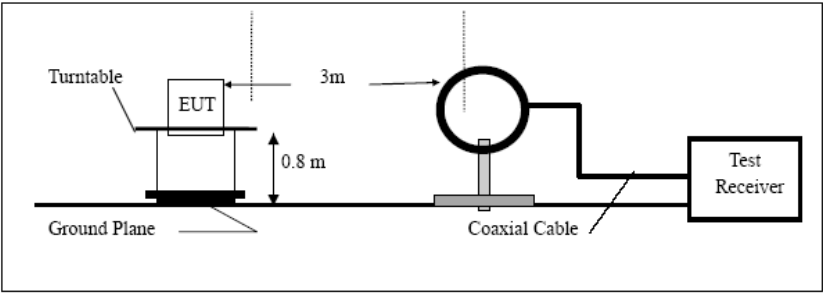
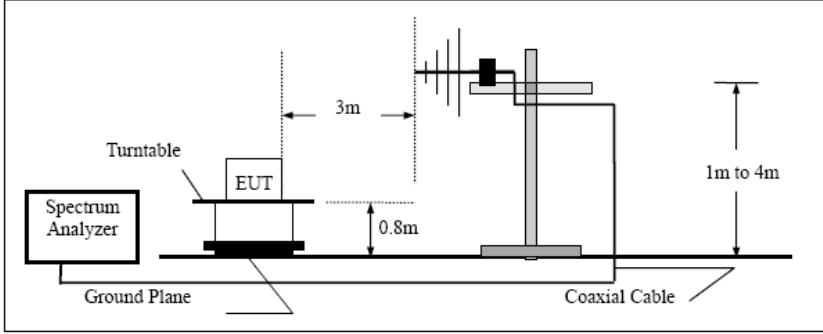
Freq MHz	Reading level dBuV	LISN/ISN factor dB	Cable loss dB	level dBuV	Limit level dBuV	Over limit dB	Remark
0.166	40.43	0.40	0.08	40.91	65.16	-24.25	QP
0.166	23.12	0.40	0.08	23.60	55.16	-31.56	Average
0.510	38.69	0.31	0.11	39.11	56.00	-16.89	QP
0.510	27.19	0.31	0.11	27.61	46.00	-18.39	Average
0.933	28.65	0.21	0.15	29.01	56.00	-26.99	QP
0.933	17.80	0.21	0.15	18.16	46.00	-27.84	Average
1.734	31.31	0.20	0.17	31.68	56.00	-24.32	QP
1.734	19.31	0.20	0.17	19.68	46.00	-26.32	Average
3.399	31.20	0.20	0.18	31.58	56.00	-24.42	QP
3.399	19.20	0.20	0.18	19.58	46.00	-26.42	Average
4.158	30.78	0.20	0.18	31.16	56.00	-24.84	QP
4.158	24.29	0.20	0.18	24.67	46.00	-21.33	Average

**Notes:**

1. An initial pre-scan was performed on the line and neutral lines with peak detector.
2. Quasi-Peak and Average measurement were performed at the frequencies with maximized peak emission.
3. Final Level = Receiver Read level + LISN Factor + Cable Loss
4. If the average limit is met when using a quasi-peak detector receiver, the EUT shall be deemed to meet both limits and measurement with the average detector receiver is unnecessary.

## 7.3 Radiated Emission Method

Test Requirement:	FCC Part15 C Section 15.209				
Test Method:	ANSI C63.10:2013				
Test Frequency Range:	9kHz to 1GHz				
Test site:	Measurement Distance: 3m				
Receiver setup:	Frequency	Detector	RBW	VBW	Remark
	9kHz - 30MHz	Quasi-peak	10kHz	30kHz	Quasi-peak Value
	30MHz-1GHz	Quasi-peak	120kHz	300kHz	Quasi-peak Value
	Above 1GHz	Peak	1MHz	3MHz	Peak Value
		AV	1MHz	10Hz	Average Value
Remark: For the frequency bands 9-90 kHz, 110-490 kHz and above 1000 MHz. Radiated emission test in these three bands are based on measurements employing an average detector.					
Limit: (Spurious Emissions)	<b>Limits for frequency below 30MHz</b>				
	Frequency	Limit (uV/m)	Measurement Distance(m)	Remark	
	0.009-0.490	2400/F(kHz)	300	Quasi-peak Value	
	0.490-1.705	24000/F(kHz)	30	Quasi-peak Value	
	1.705-30	30	30	Quasi-peak Value	
	<b>Limits for frequency Above 30MHz</b>				
	Frequency	Limit (dBuV/m @3m)	Remark		
	30MHz-88MHz	40.00	Quasi-peak Value		
	88MHz-216MHz	43.50	Quasi-peak Value		
	216MHz-960MHz	46.00	Quasi-peak Value		
960MHz-1GHz	54.00	Quasi-peak Value			
Above 1GHz	54.00	Average Value			
	74.00	Peak Value			
Remark: The emission limits shown in the above table are based on measurements employing a CISPR quasi-peak detector except for the frequency bands 9-90 kHz, 110-490 kHz and above 1000 MHz. Radiated emission limits in these three bands are based on measurements employing an average detector.					
Test Procedure:	<ol style="list-style-type: none"> <li>1. The EUT was placed on the top of a rotating table 0.8 meters above the ground at a 3 meter camber. The table was rotated 360 degrees to determine the position of the highest radiation.</li> <li>2. The EUT was set 3 meters away from the interference-receiving antenna, which was mounted on the top of a variable-height antenna tower.</li> <li>3. The antenna height is varied from one meter to four meters above the ground to determine the maximum value of the field strength. Both horizontal and vertical polarizations of the antenna are set to make the measurement.</li> <li>4. For each suspected emission, the EUT was arranged to its worst case and then the antenna was tuned to heights from 1 meter to 4 meters and the rota table was turned from 0 degrees to 360 degrees to find the maximum reading.</li> <li>5. The test-receiver system was set to Peak Detect Function and Specified Bandwidth with Maximum Hold Mode.</li> <li>6. If the emission level of the EUT in peak mode was 10dB lower than the</li> </ol>				

	<p>limit specified, then testing could be stopped and the peak values of the EUT would be reported. Otherwise the emissions that did not have 10dB margin would be re-tested one by one using peak, quasi-peak or average method as specified and then reported in a data sheet.</p> <p>7. The radiation measurements are performed in X, Y, Z axis positioning. And found the Y axis positioning which it is worse case, only the test worst case mode is recorded in the report.</p>
<p>Test setup:</p>	<p>Below 30MHz</p>  <p>30MHz ~ 1000MHz</p> 
<p>Test Instruments:</p>	<p>Refer to section 6.0 for details</p>
<p>Test mode:</p>	<p>Refer to section 5.2 for details</p>
<p>Test results:</p>	<p>Pass</p>

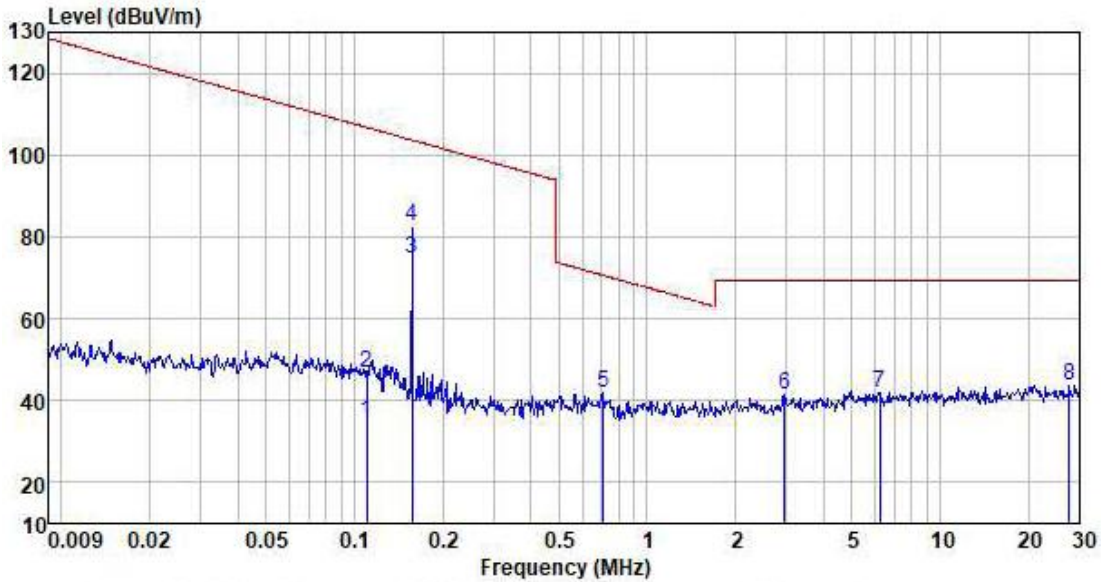
**Measurement data:**

**Measurement data:**

**Note: Limit dBuV/m @3m = Limit dBuV/m @300m+ 80**

**Limit dBuV/m @3m = Limit dBuV/m @30m + 40**

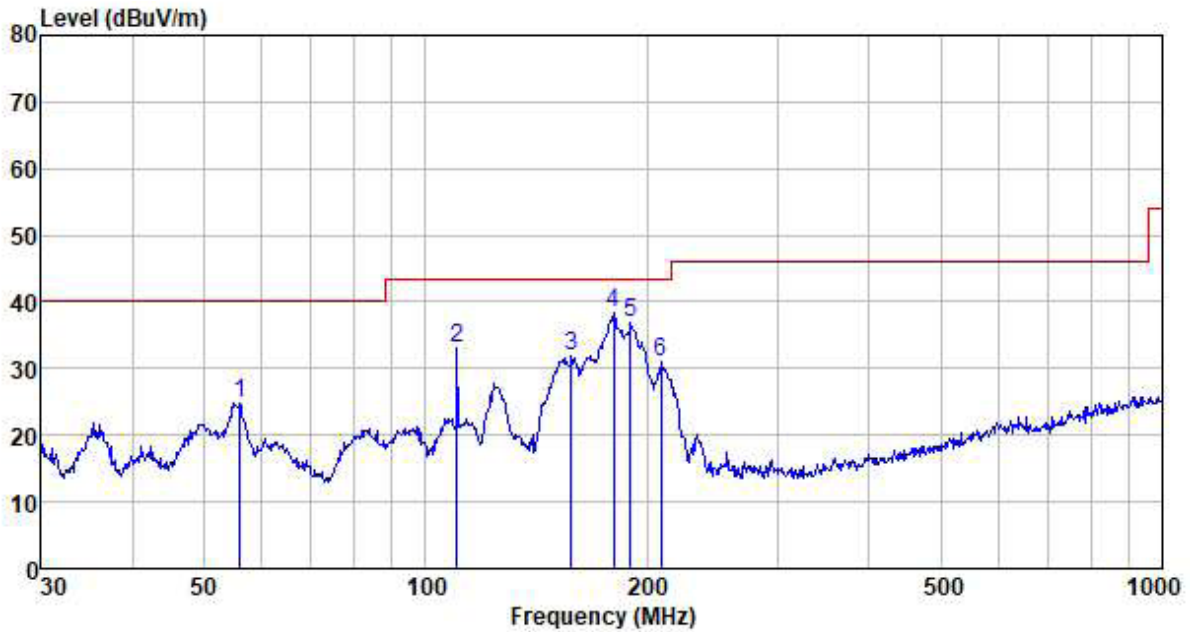
**Below 30MHz**



Freq MHz	Reading level dBuV	Antenna factor dB/m	Cable loss dB	Preamp factor dB	level dBuV	Limit level dBuV/m	Over limit dB	Remark
0.110	10.62	24.12	0.17	0.00	34.91	106.78	-71.87	Average
0.110	22.33	24.12	0.17	0.00	46.62	106.78	-60.16	Peak
0.158	51.88	22.79	0.20	0.00	74.87	103.63	-28.76	Average
0.158	59.51	22.79	0.20	0.00	82.50	103.63	-21.13	Peak
0.707	20.85	20.61	0.30	0.00	41.76	70.61	-28.85	Peak
2.948	19.86	21.18	0.40	0.00	41.44	69.54	-28.10	Peak
6.218	18.78	22.75	0.45	0.00	41.98	69.54	-27.56	Peak
27.663	15.57	27.46	0.55	0.00	43.58	69.54	-25.96	Peak

## 30MHz ~ 1GHz

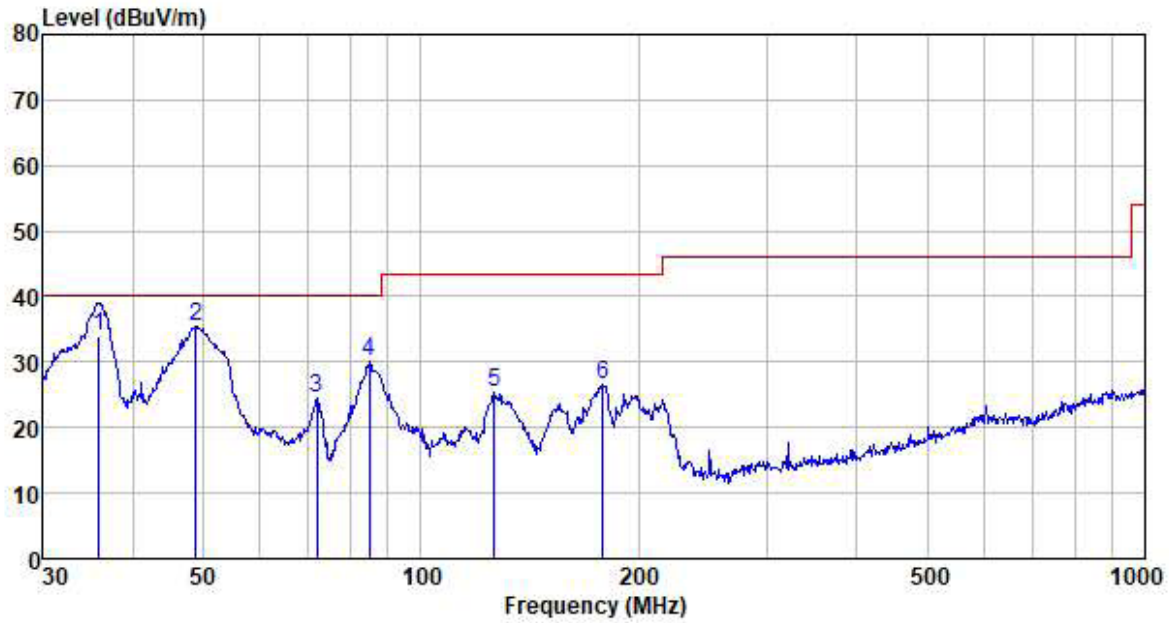
Horizontal



Freq MHz	Reading level dBuV	Antenna factor dB/m	Cable loss dB	Preamp factor dB	level dBuV	Limit level dBuV/m	Over limit dB	Remark
56.001	48.61	11.68	0.83	36.27	24.85	40.00	-15.15	QP
110.182	57.35	11.10	1.28	36.81	32.92	43.50	-10.58	QP
157.559	59.18	8.15	1.62	37.12	31.83	43.50	-11.67	QP
180.017	64.84	8.90	1.74	37.24	38.24	43.50	-5.26	QP
189.739	62.56	9.90	1.79	37.28	36.97	43.50	-6.53	QP
208.580	55.81	10.73	1.89	37.34	31.09	43.50	-12.41	QP



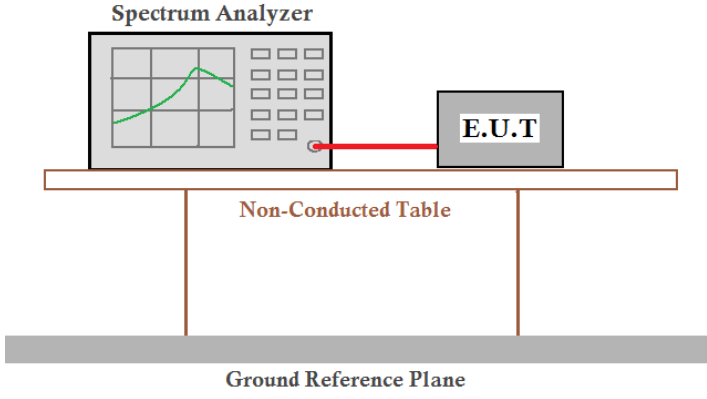
Vertical



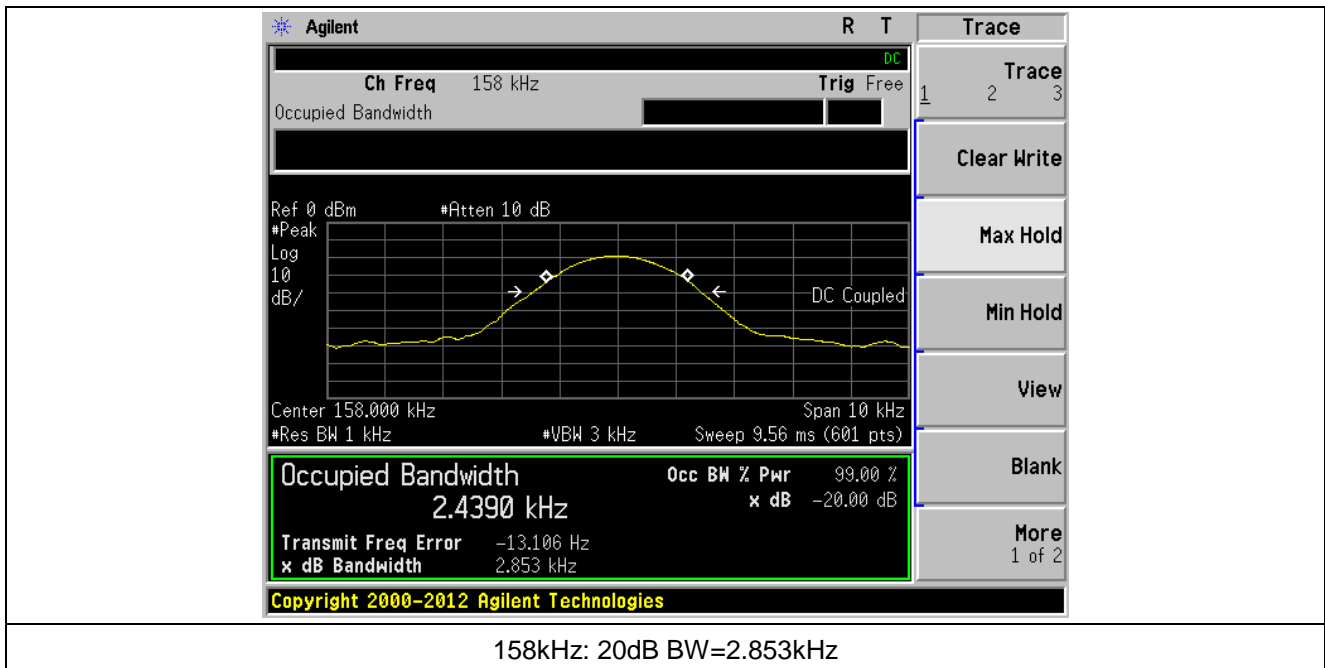
Freq MHz	Reading level dBuV	Antenna factor dB/m	Cable loss dB	Preamp factor dB	level dBuV	Limit level dBuV/m	Over limit dB	Remark
35.875	57.19	11.49	0.62	35.41	33.89	40.00	-6.11	QP
48.843	58.50	12.29	0.76	36.13	35.42	40.00	-4.58	QP
71.832	52.45	7.48	0.96	36.46	24.43	40.00	-15.57	QP
84.999	56.46	9.05	1.07	36.59	29.99	40.00	-10.01	QP
126.329	52.28	8.66	1.41	36.93	25.42	43.50	-18.08	QP
178.133	53.28	8.83	1.73	37.23	26.61	43.50	-16.89	QP



## 7.4 20dB Occupy Bandwidth

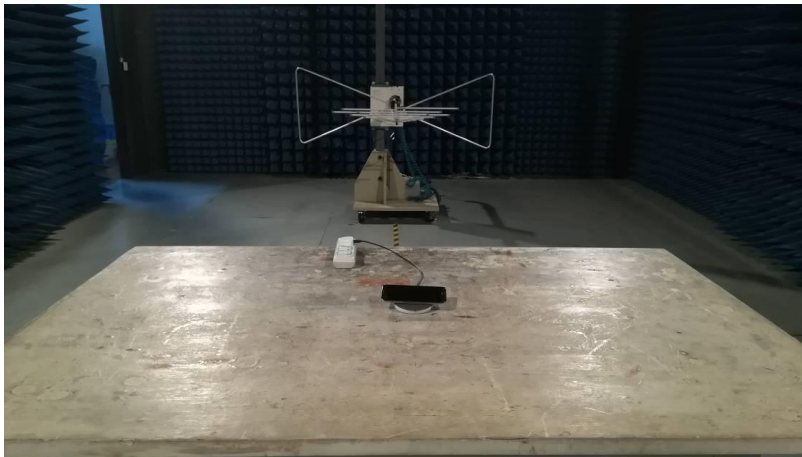
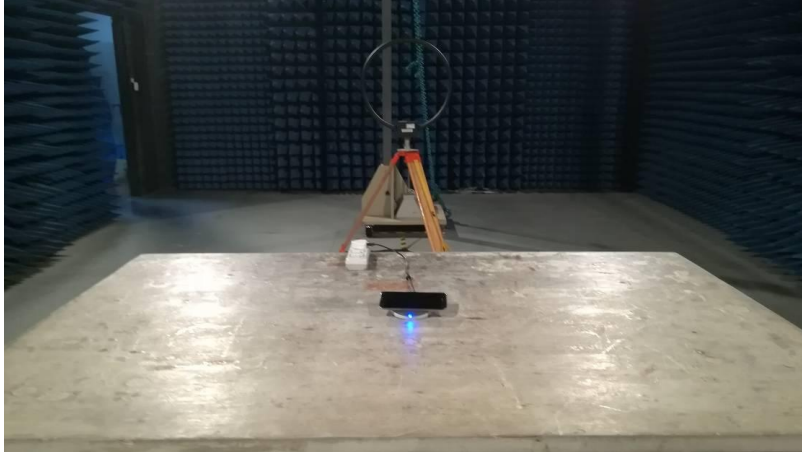
Test Requirement:	FCC Part15 C Section 15.215
Test Method:	ANSI C63.10:2013
Test setup:	
Test Instruments:	Refer to section 6.0 for details
Test mode:	Refer to section 5.2 for details
Test results:	Pass

### Measurement Data



## 8 Test Setup Photo

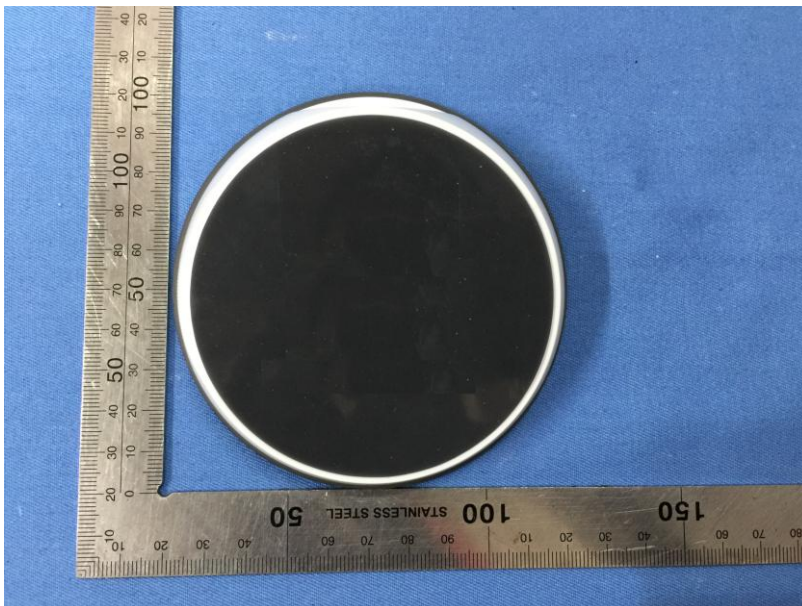
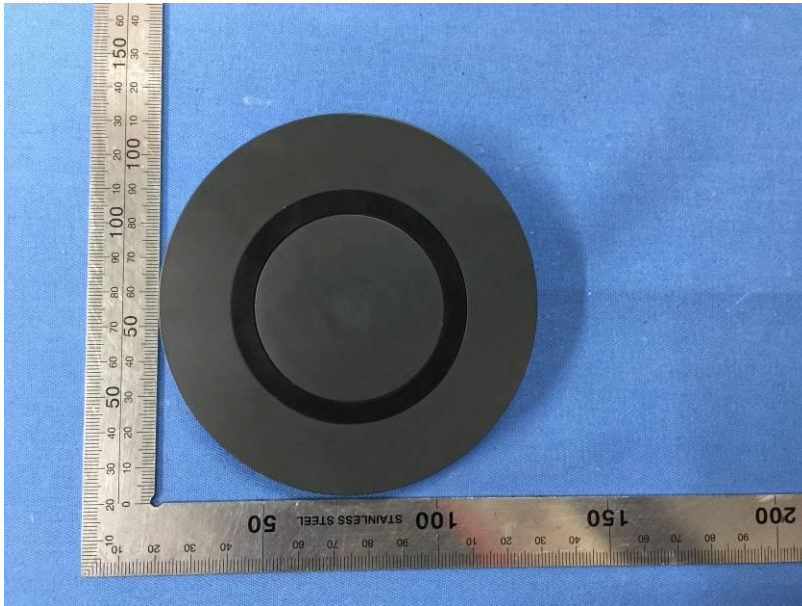
Radiated Emission

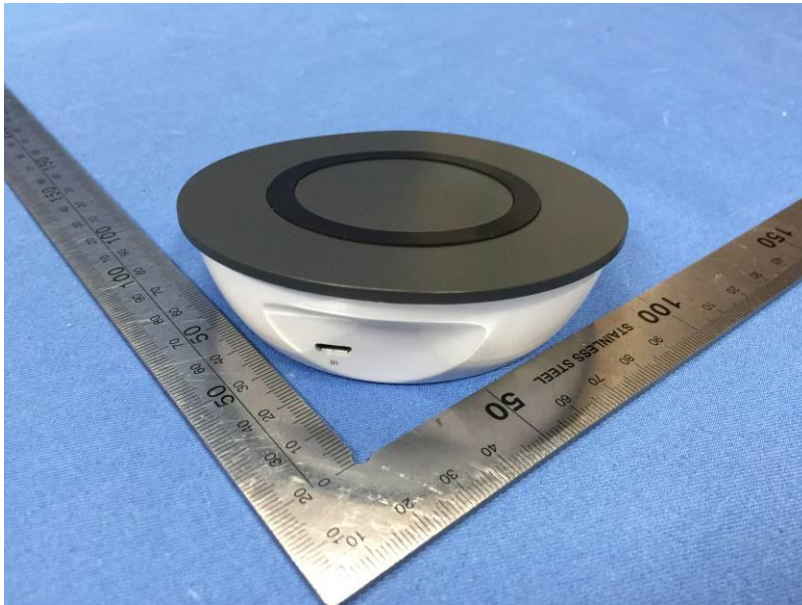
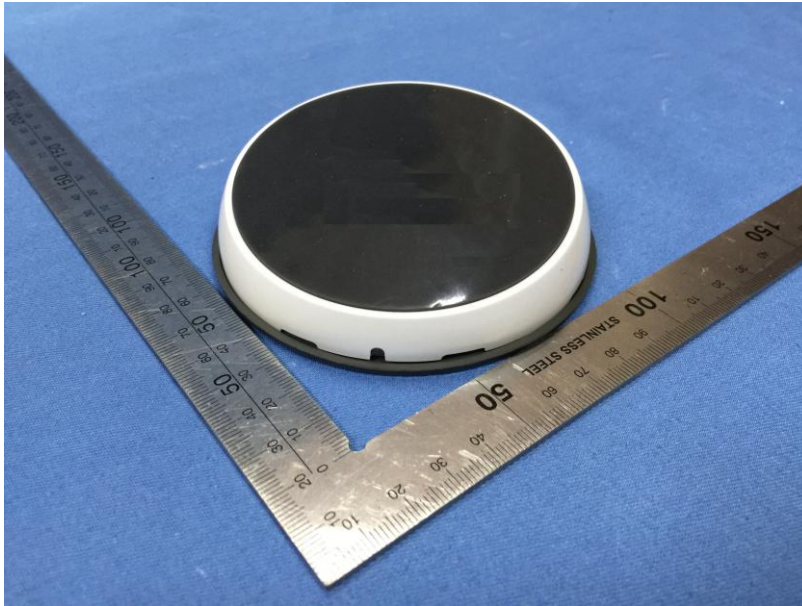


## Conducted Emission

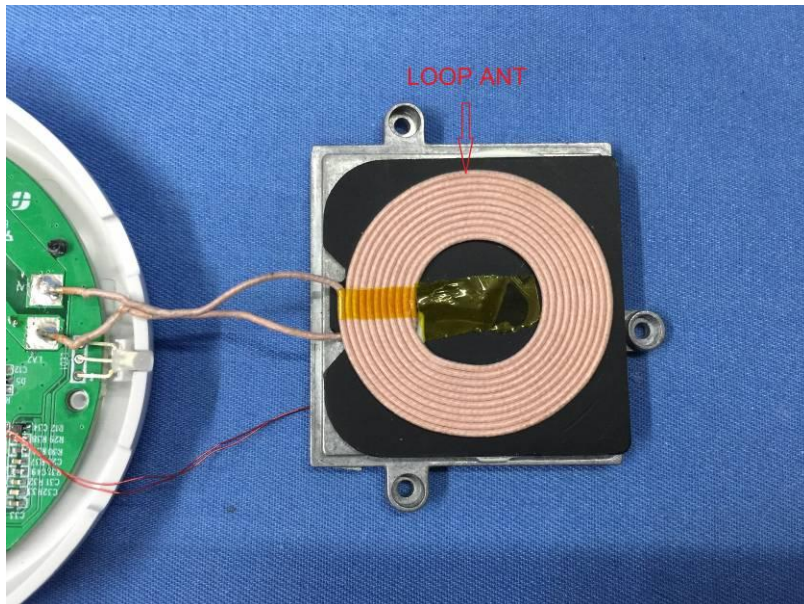
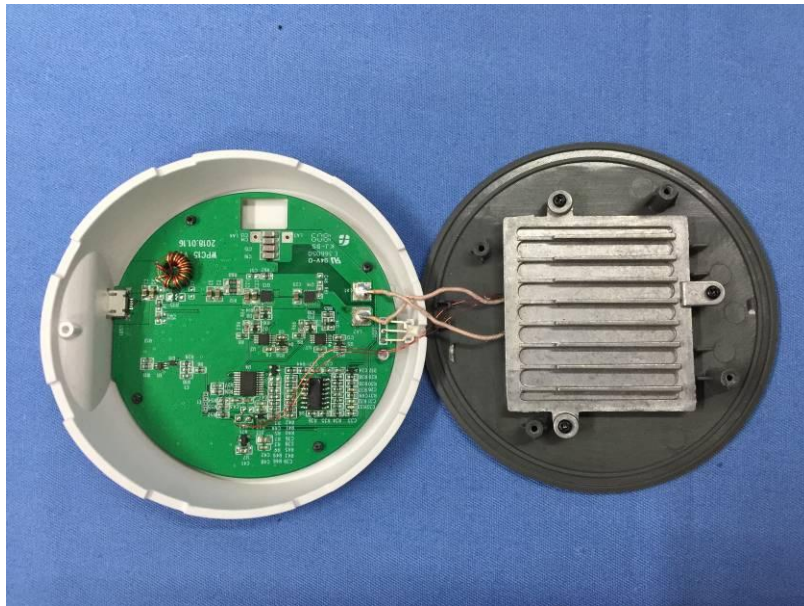


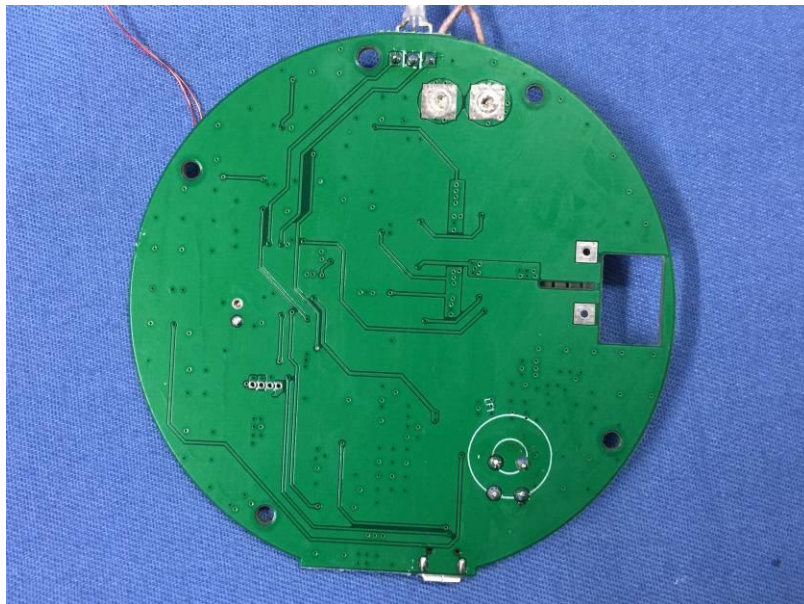
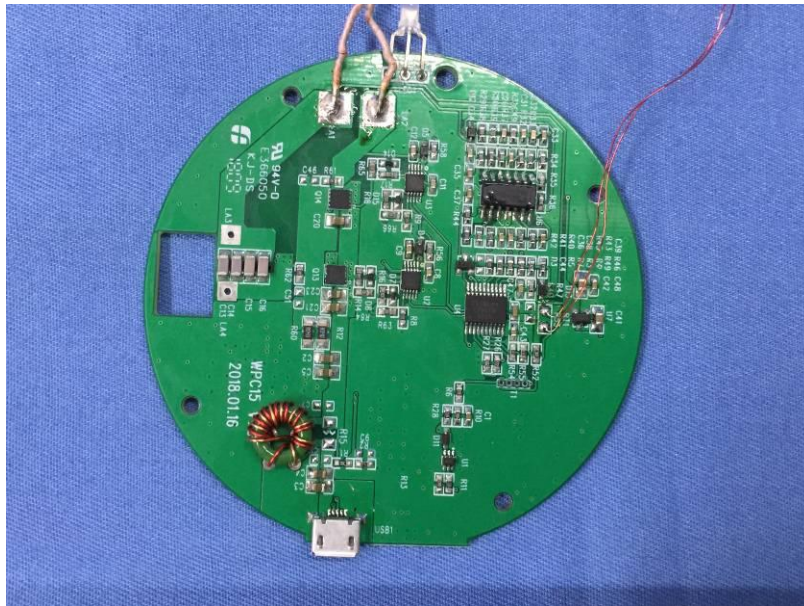
## 9 EUT Constructional Details











-----End-----