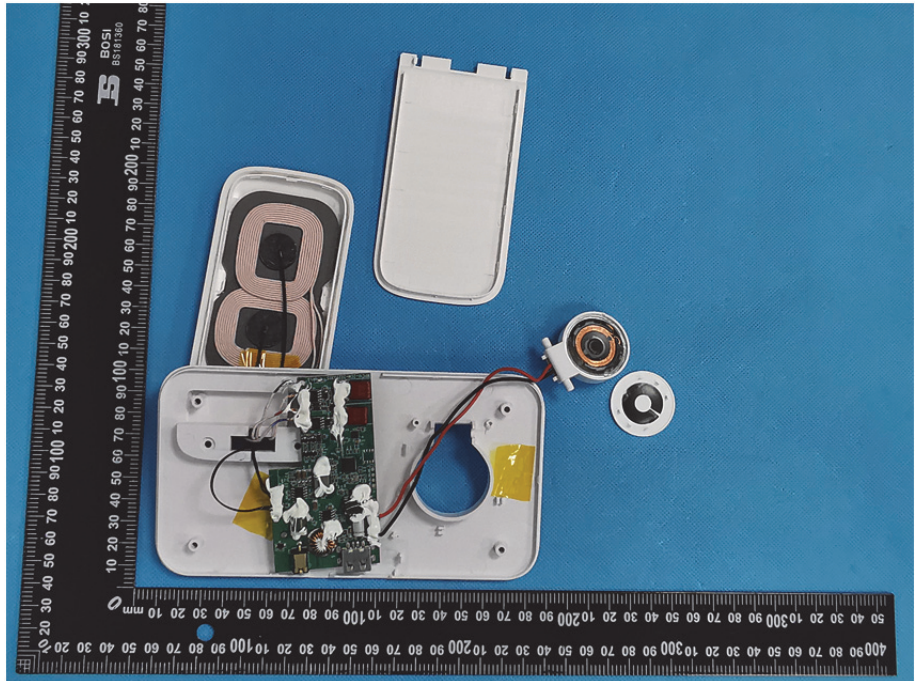
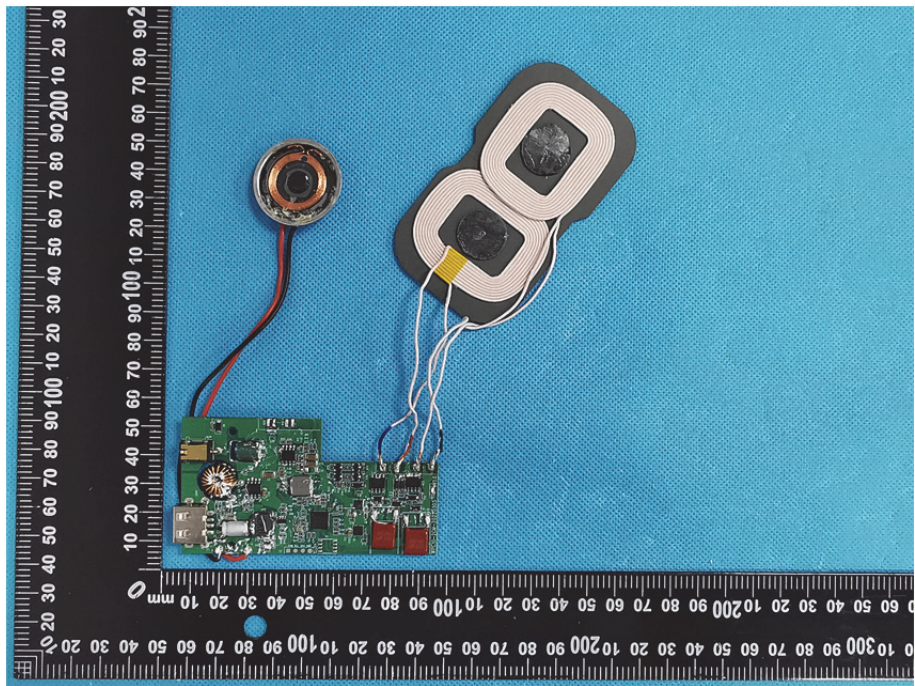


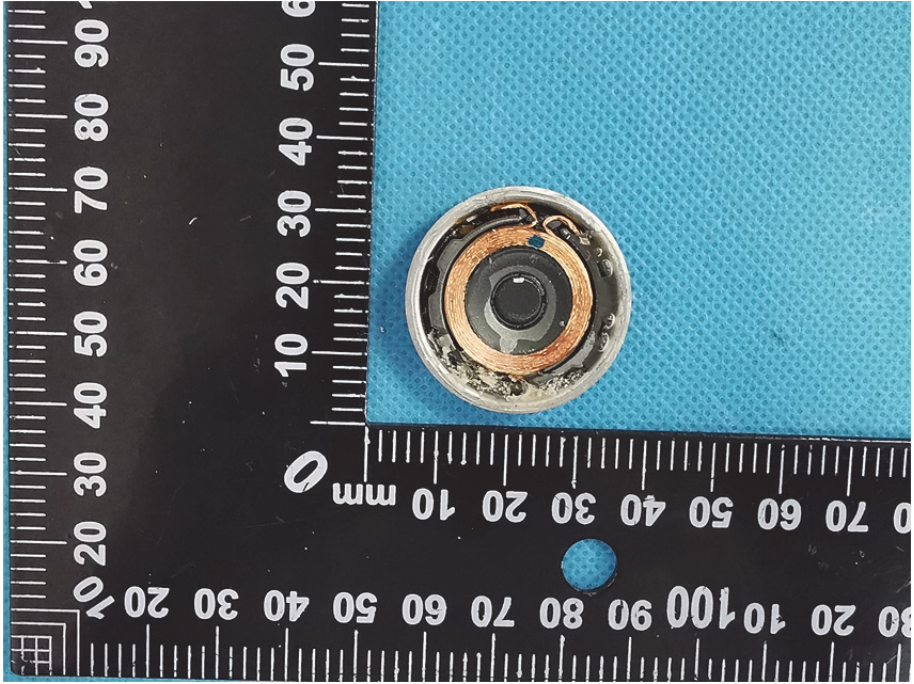
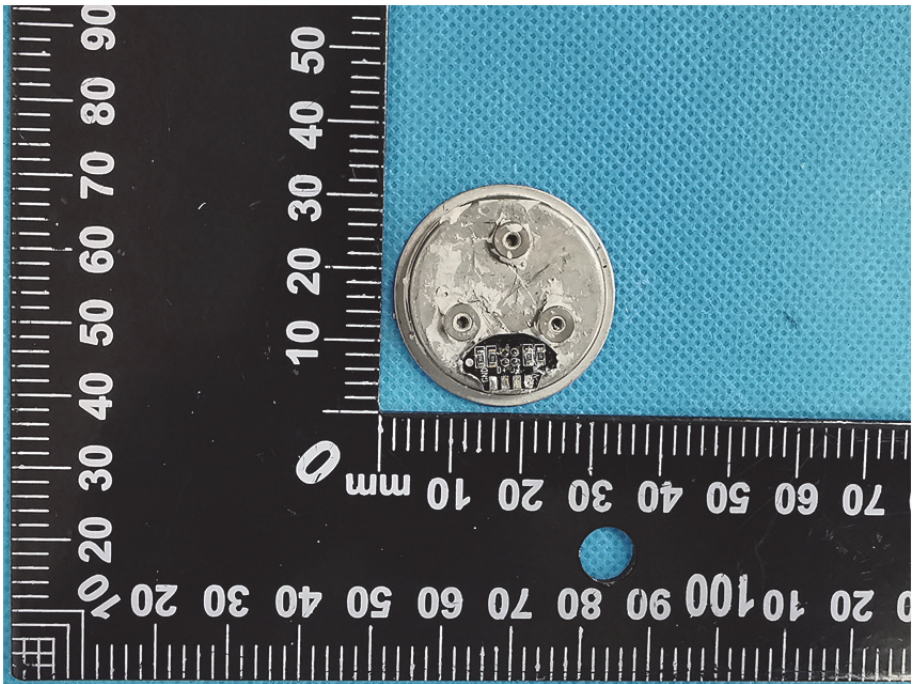
EXHIBIT 3 - EUT INTERNAL PHOTOGRAPHS

EUT Housing and Board View 1



Solder Board-Component View 1



<p>Solder Board-Component View 2</p>	 A photograph showing the top view of a circular solder board component. The component has a central lens-like structure surrounded by a copper-colored ring and other internal components. It is placed on a blue textured surface next to a black ruler with white markings in millimeters. The ruler shows measurements from 0 to 100 mm.
<p>Solder Board-Component View 3</p>	 A photograph showing the bottom view of the same circular solder board component. The underside features a small integrated circuit (IC) with several pins, and three circular solder joints. It is placed on a blue textured surface next to a black ruler with white markings in millimeters, similar to the top view.

