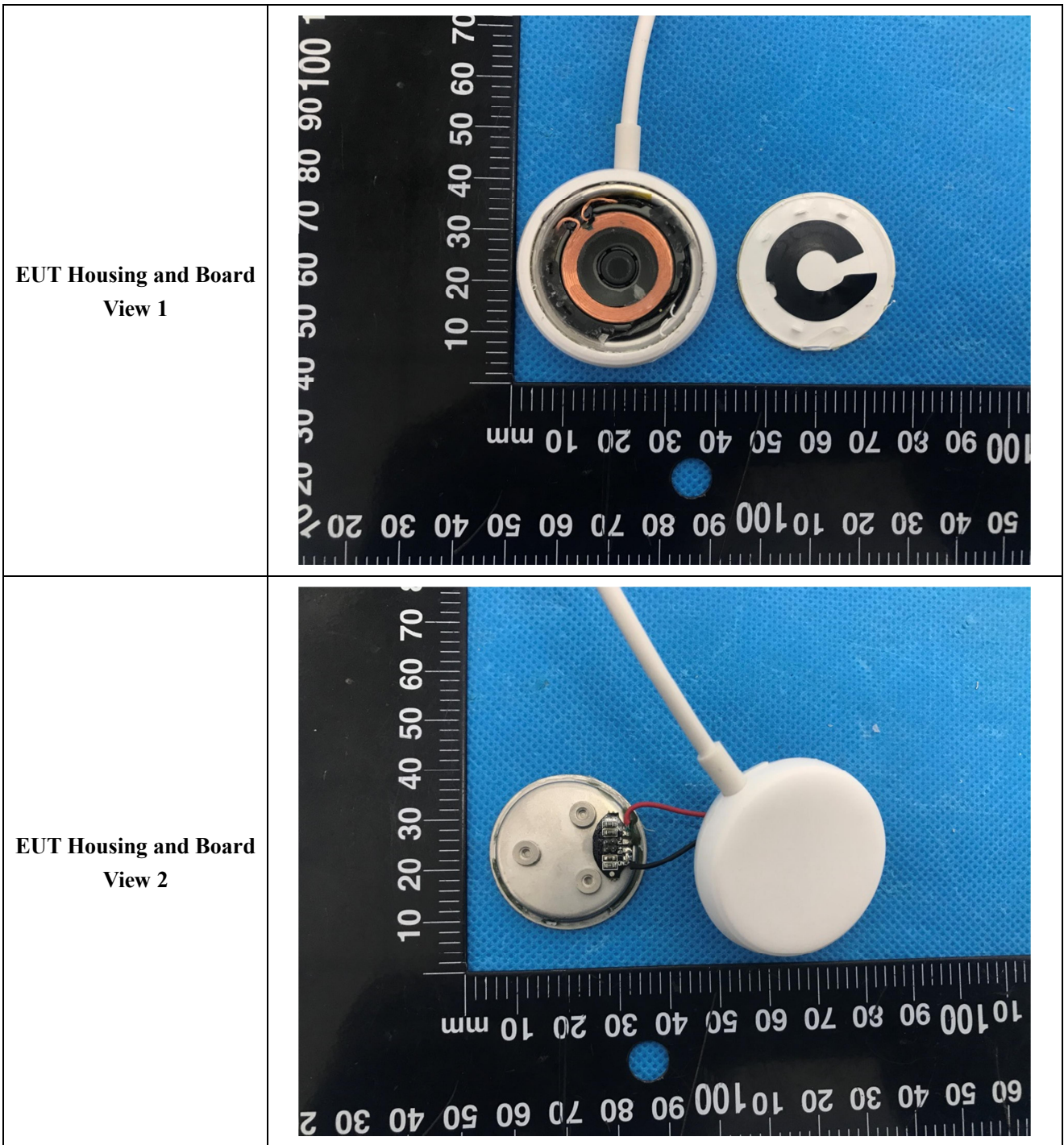
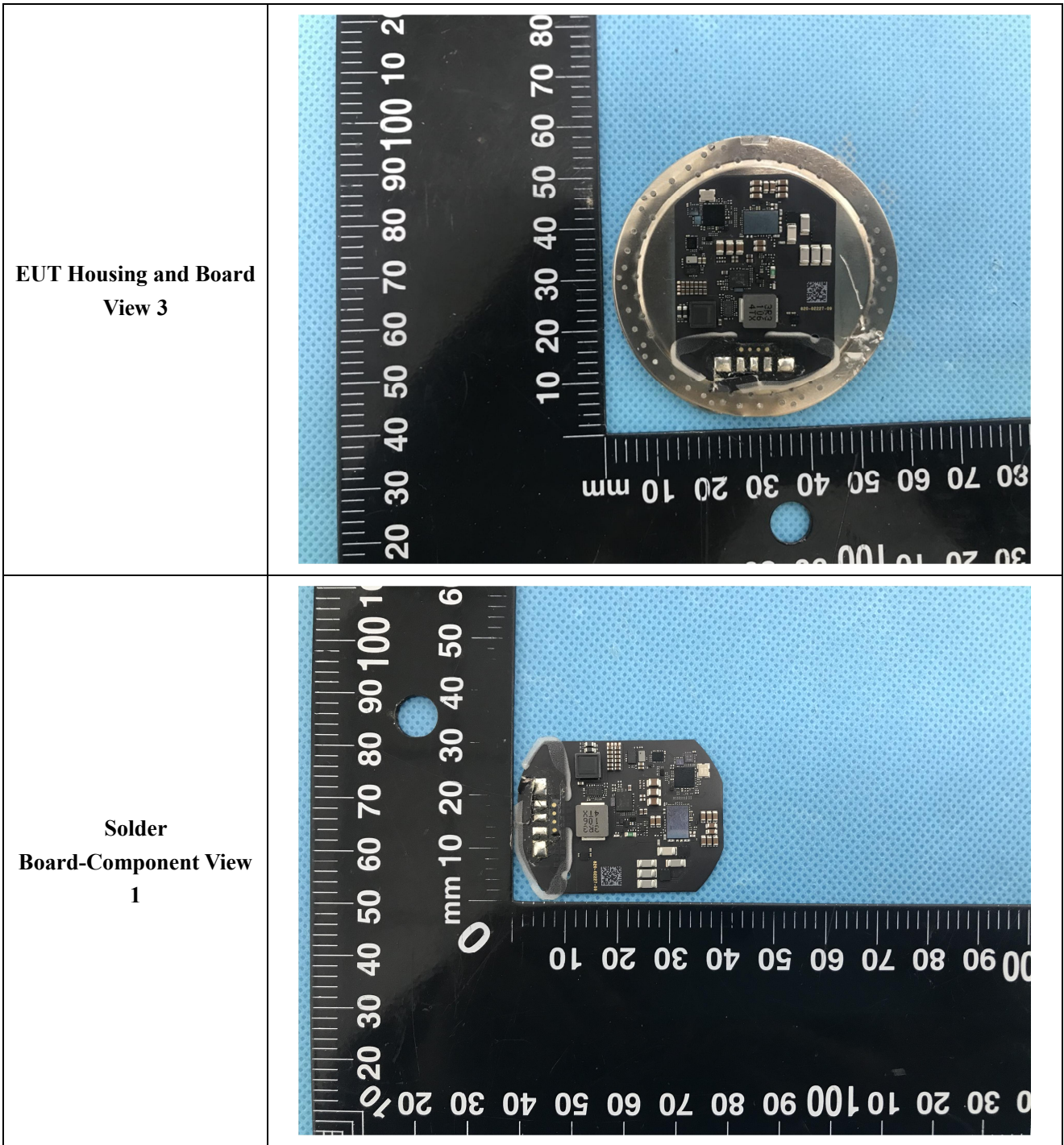
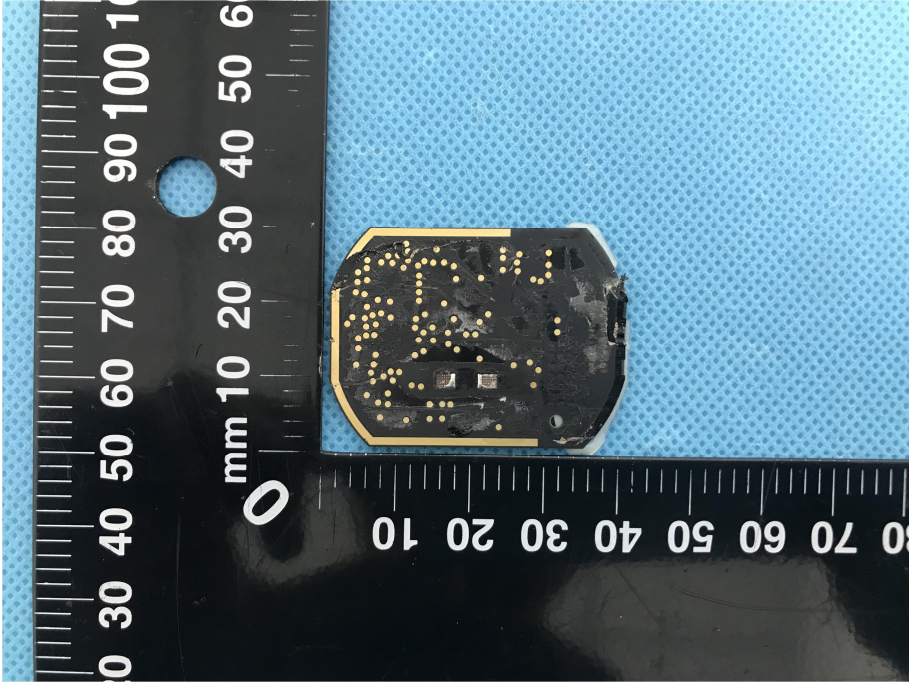
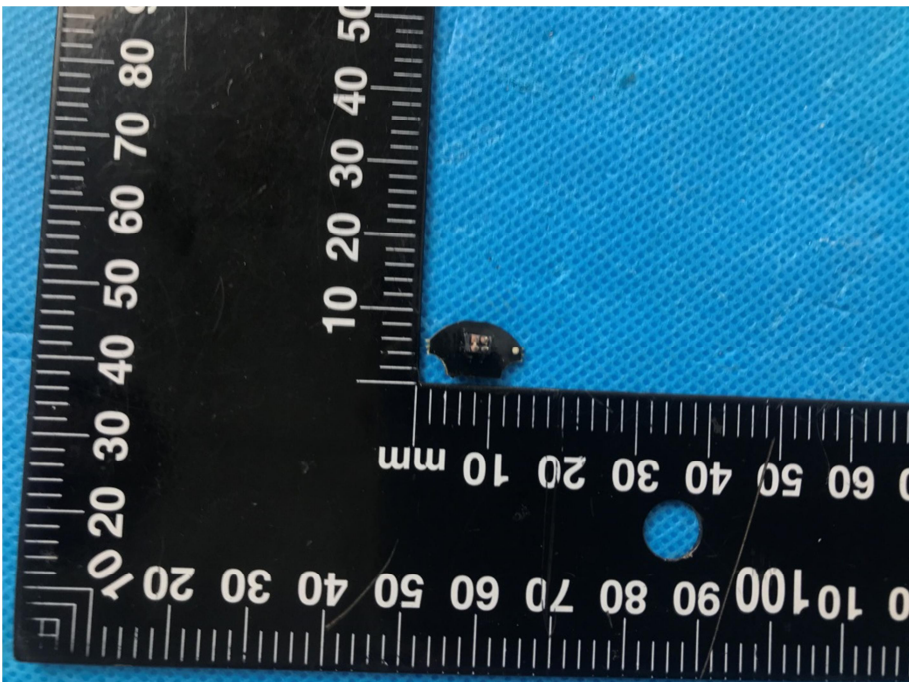
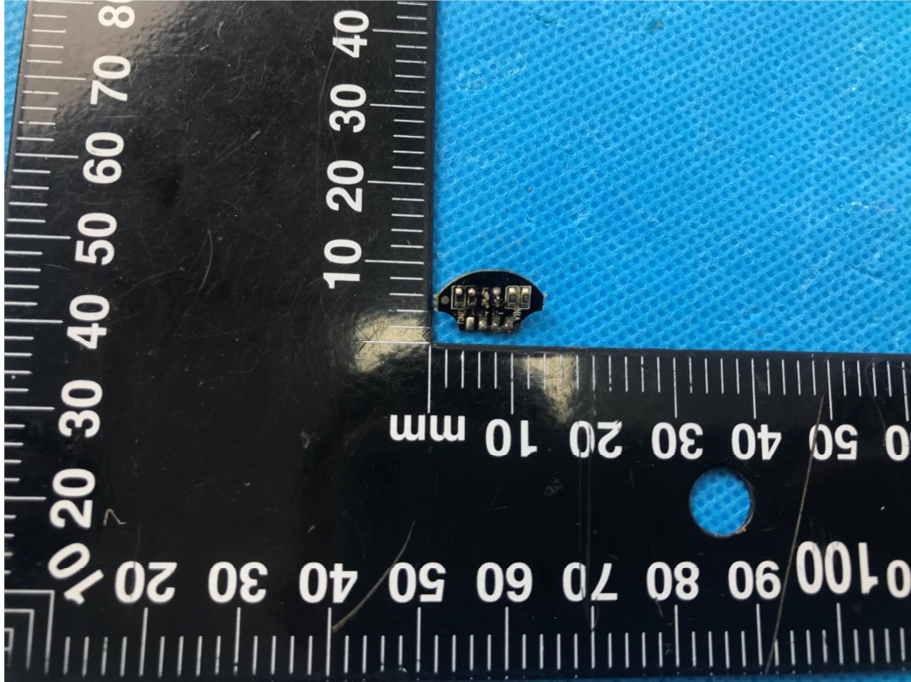
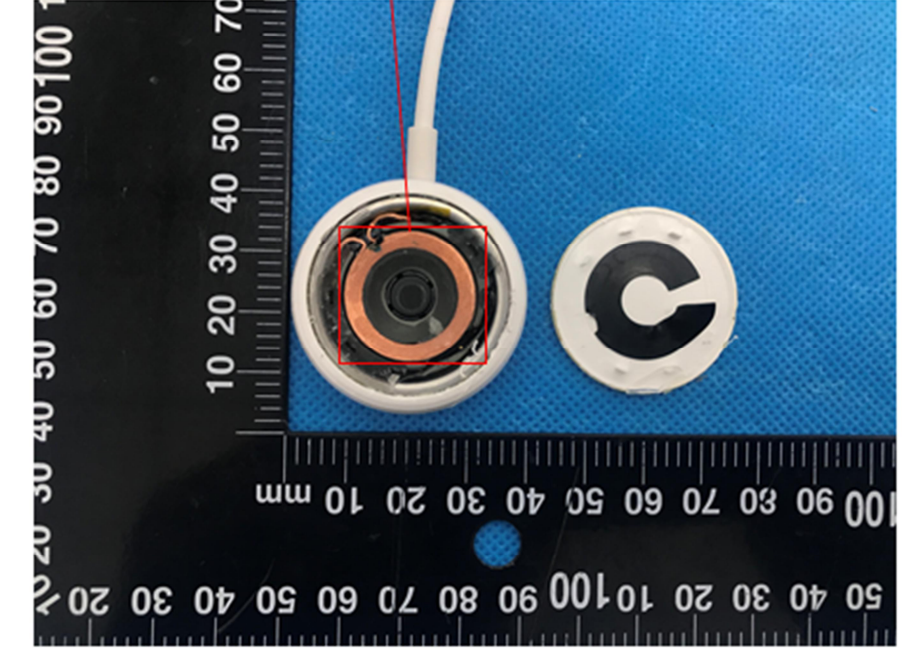


EXHIBIT 3 - EUT INTERNAL PHOTOGRAPHS





<p style="text-align: center;">Solder Board-Component View 2</p>	 A photograph showing a rectangular component with a gold border and a black surface covered in numerous small, circular solder points. The component is placed on a blue textured surface next to a black ruler with white markings. The ruler shows measurements in millimeters, with the component's length being approximately 45 mm and its width approximately 25 mm.
<p style="text-align: center;">Solder Board-Component View 3</p>	 A photograph showing a small, dark, rectangular component with a few solder points. The component is placed on a blue textured surface next to a black ruler with white markings. The ruler shows measurements in millimeters, with the component's length being approximately 10 mm and its width approximately 5 mm.

<p>Solder Board-Component View 4</p>	 <p>A photograph showing a small electronic component soldered onto a blue PCB. A black ruler with white markings is placed next to the component for scale. The ruler shows measurements in millimeters, with markings for 10, 20, 30, 40, 50, 60, 70, and 80 mm. The component is located between the 10 mm and 20 mm marks. The background is a blue textured surface.</p>
<p>Antenna View</p>	<p>Wireless Charger Antenna</p>  <p>A photograph showing the internal components of a wireless charger antenna. A white cable is connected to a circular metal housing. The internal components, including a copper coil and a black circular element, are visible. A red box highlights the copper coil, and a red line points to it from the text "Wireless Charger Antenna" above. A black ruler with white markings is placed next to the antenna for scale. The ruler shows measurements in millimeters, with markings for 10, 20, 30, 40, 50, 60, 70, 80, 90, and 100 mm. The background is a blue textured surface.</p>