
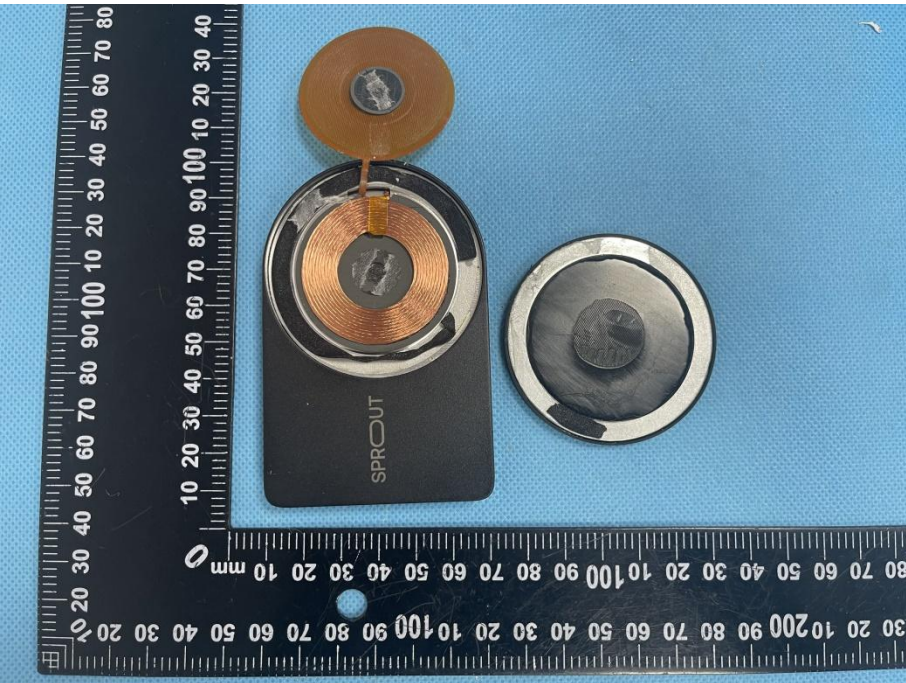
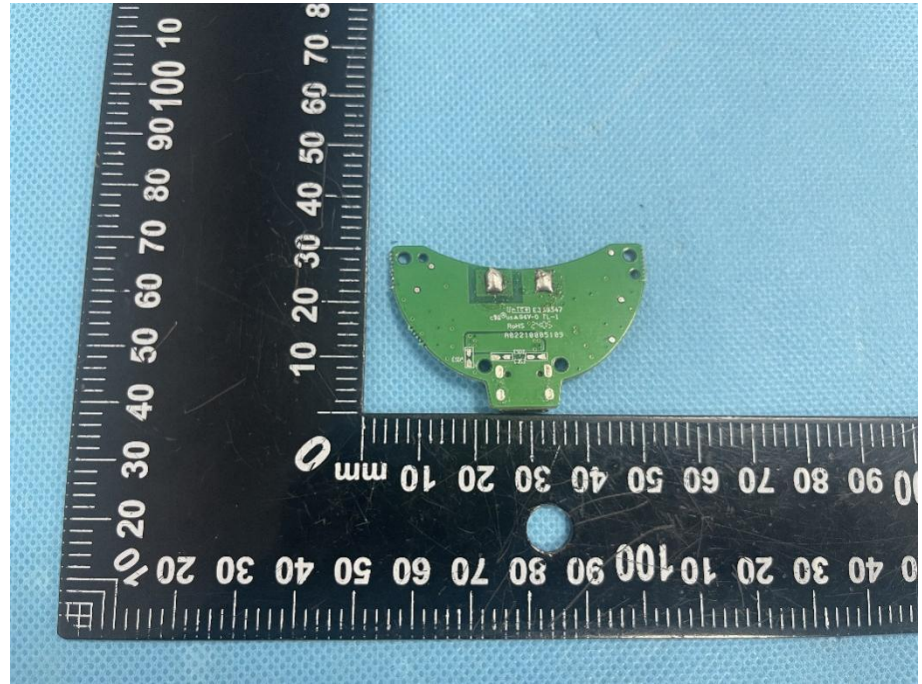


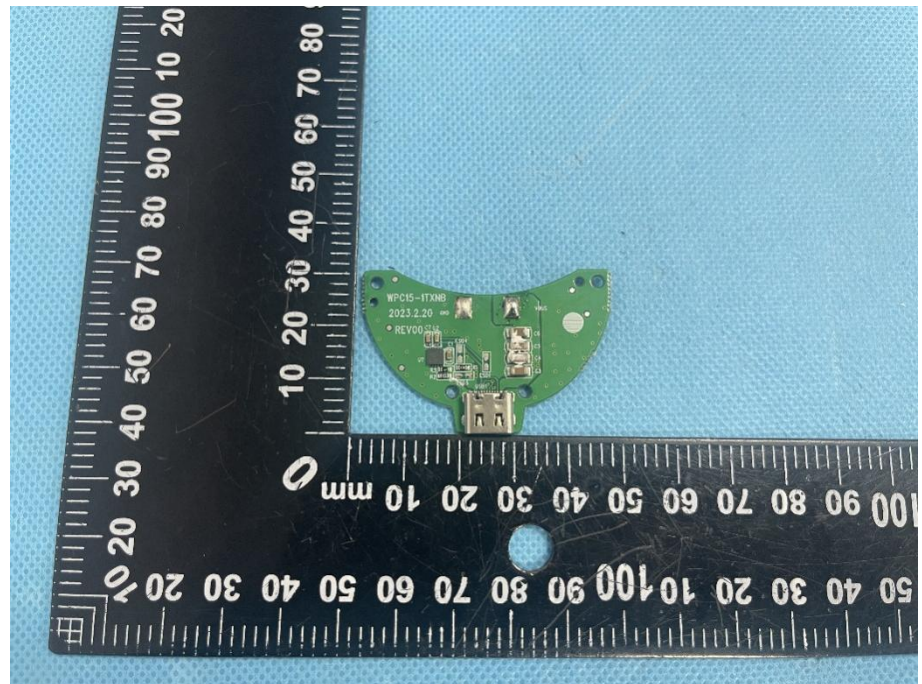
EXHIBIT 3 - EUT INTERNAL PHOTOGRAPHS

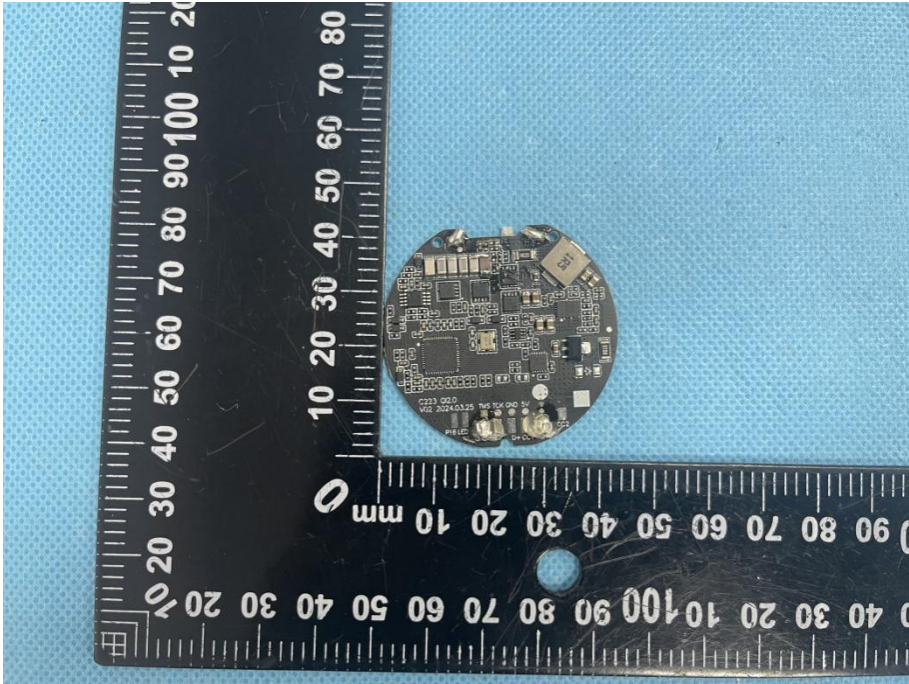
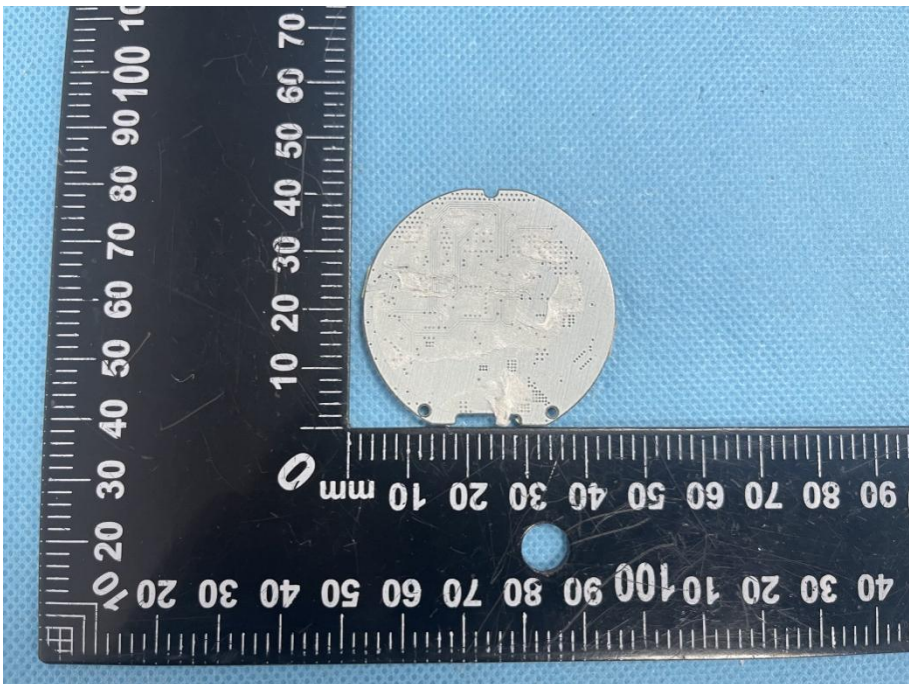
<p>EUT Housing and Board View 1</p>	 <p>A photograph showing the internal components of an EUT housing. On the left is the green printed circuit board (PCB) with various electronic components and a red wire. On the right is the black plastic housing with a circular vent. A black ruler with white markings is placed below the components for scale, showing measurements in millimeters.</p>
<p>Solder Board-Component View 1</p>	 <p>A photograph showing a close-up of a solder board component. The component is a circular metal ring with a copper coil inside. A small circular component is attached to the top of the ring. A black ruler with white markings is placed below the component for scale, showing measurements in millimeters.</p>

**Solder
Board-Component
View 2**



**Solder
Board-Component
View 3**



<p>Solder Board-Component View 4</p>	 A circular solder board component is shown against a blue background. A black ruler with white markings is placed to the left and bottom of the component for scale. The ruler shows measurements in millimeters, with the component's diameter being approximately 30 mm. The component itself is a dark, circular board with various electronic components, including a central chip and several smaller components, all soldered onto the board. The text "2221 02.0" and "V02 2024.03.25" is visible on the board.
<p>Solder Board-Component View 5</p>	 A circular solder board component is shown against a blue background. A black ruler with white markings is placed to the left and bottom of the component for scale. The ruler shows measurements in millimeters, with the component's diameter being approximately 30 mm. The component is a light-colored, circular board with a complex pattern of soldered connections and components, appearing as a reverse-side view of the component in View 4.

Antenna View

