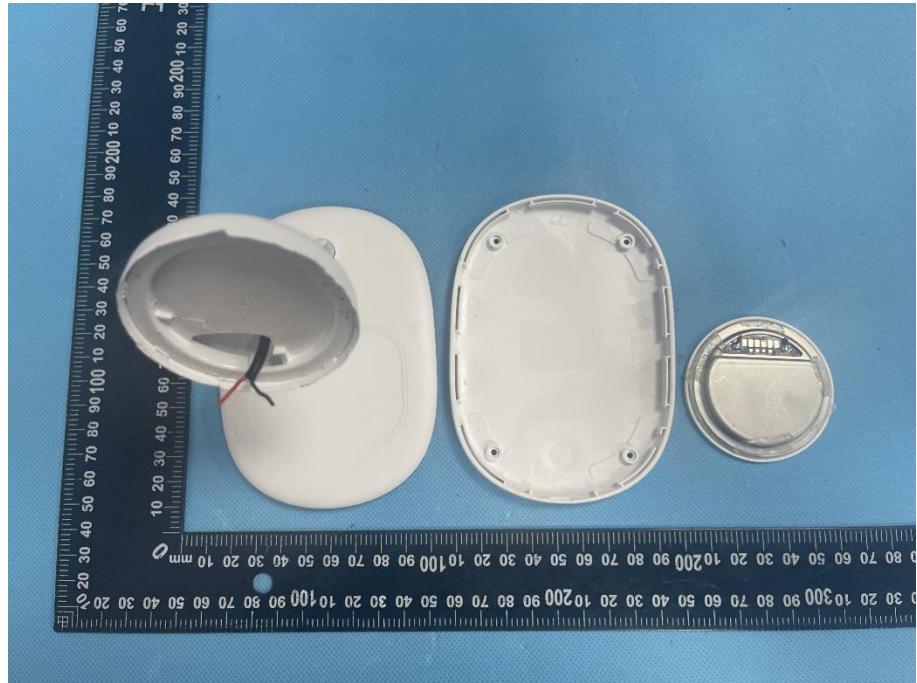
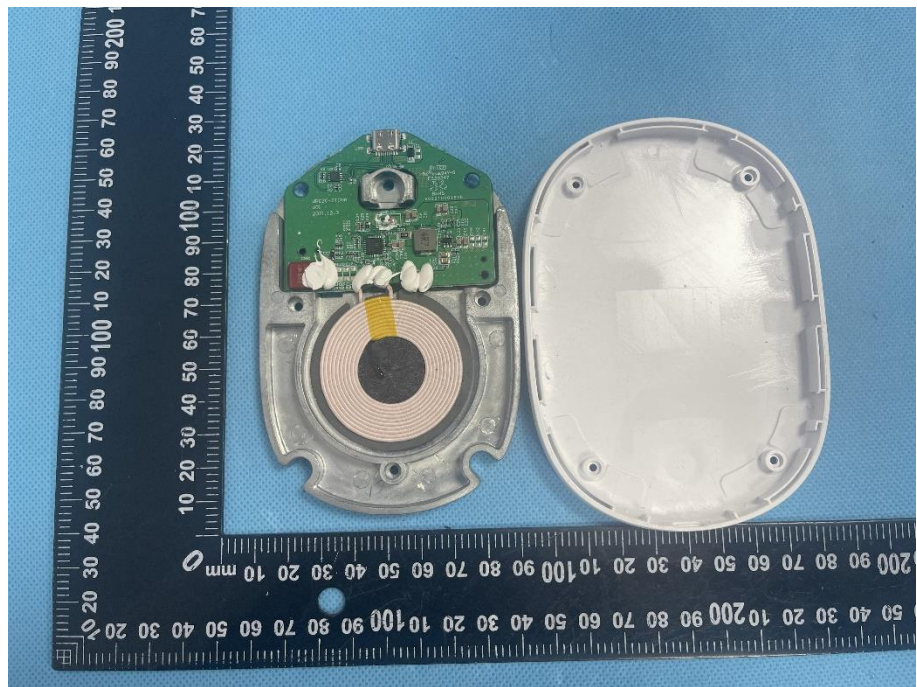


EXHIBIT 3 - EUT INTERNAL PHOTOGRAPHS

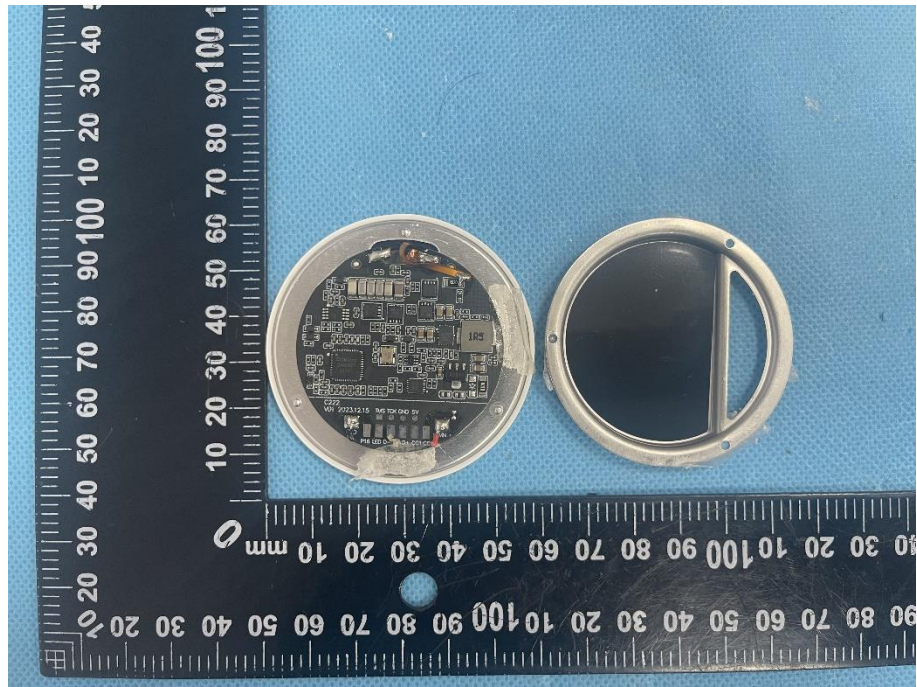
EUT Housing and Board View 1



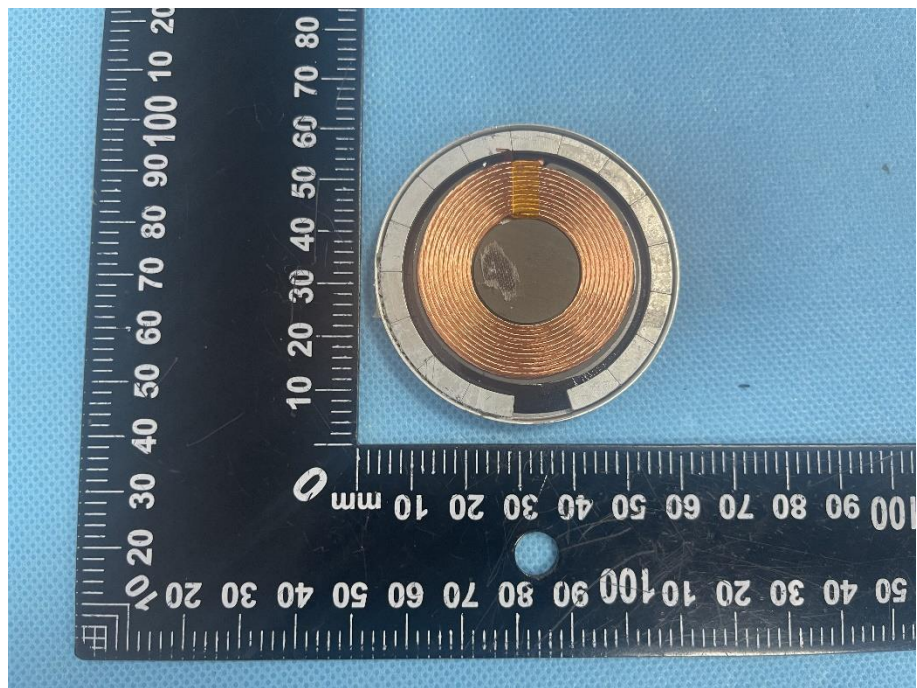
EUT Housing and Board View 2

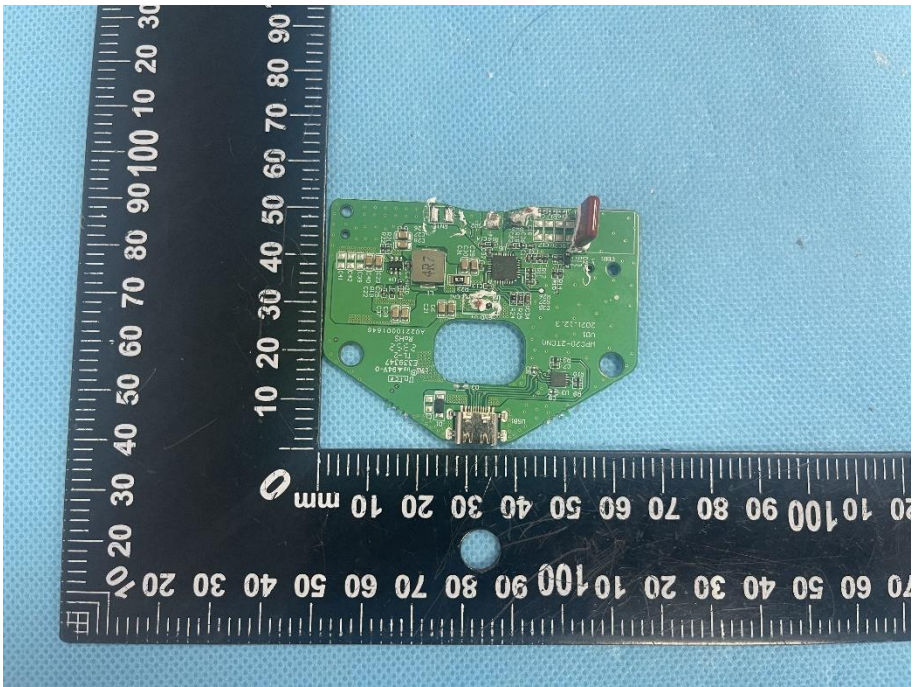
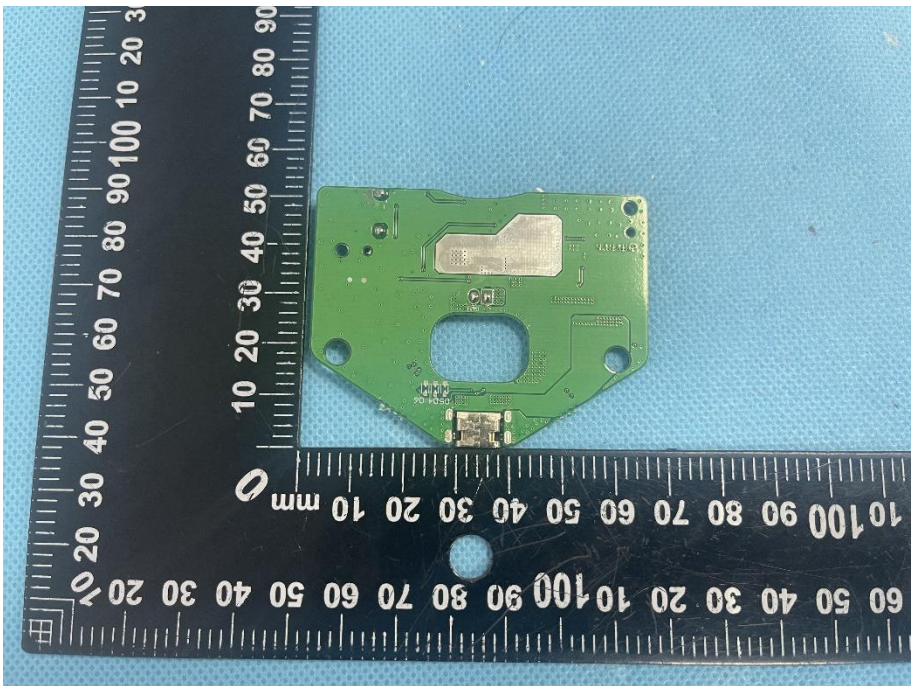


**EUT Housing and
Board View 3**

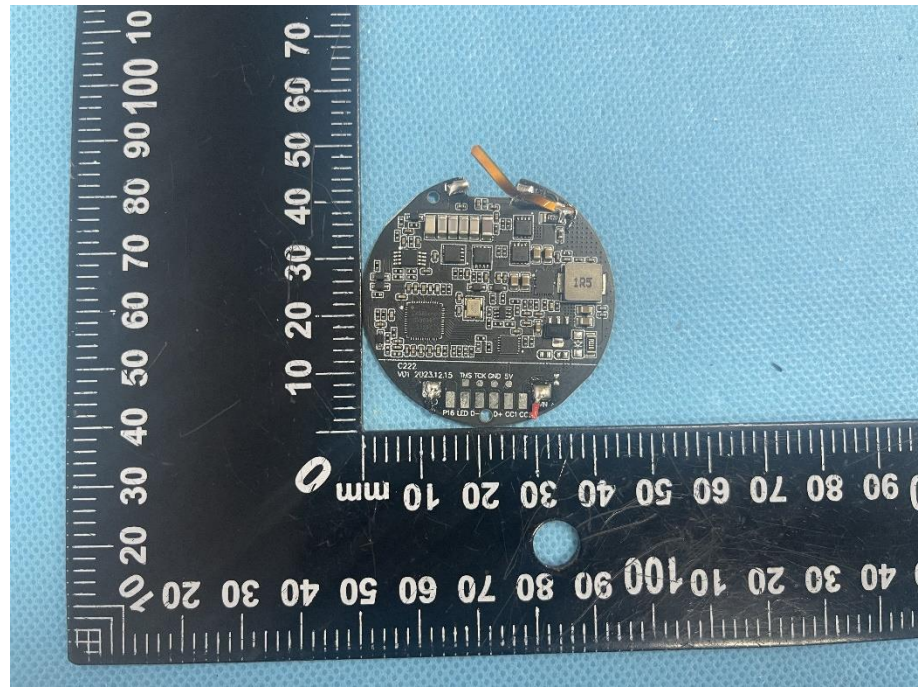


**EUT Housing and
Board View 4**

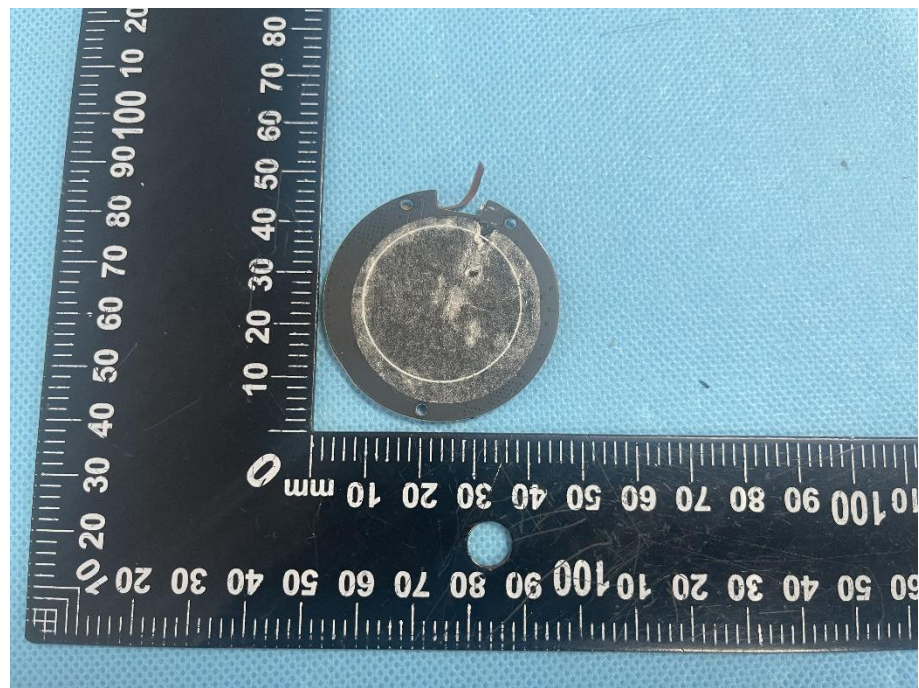


<p>Solder Board-Component View 1</p>	 A photograph of a green PCB component with various electronic components (resistors, capacitors, and a microchip) soldered onto it. The component is placed on a blue textured surface next to a black ruler with white markings. The ruler shows measurements in millimeters, with the component's length being approximately 100 mm and its width around 40 mm. The component has a central circular cutout and several mounting holes.
<p>Solder Board-Component View 2</p>	 A photograph of the same green PCB component from a different perspective. This view shows the reverse side of the component, highlighting the solder joints and the layout of the PCB traces. The component is again placed on a blue textured surface next to a black ruler with white markings, showing its dimensions are consistent with View 1.

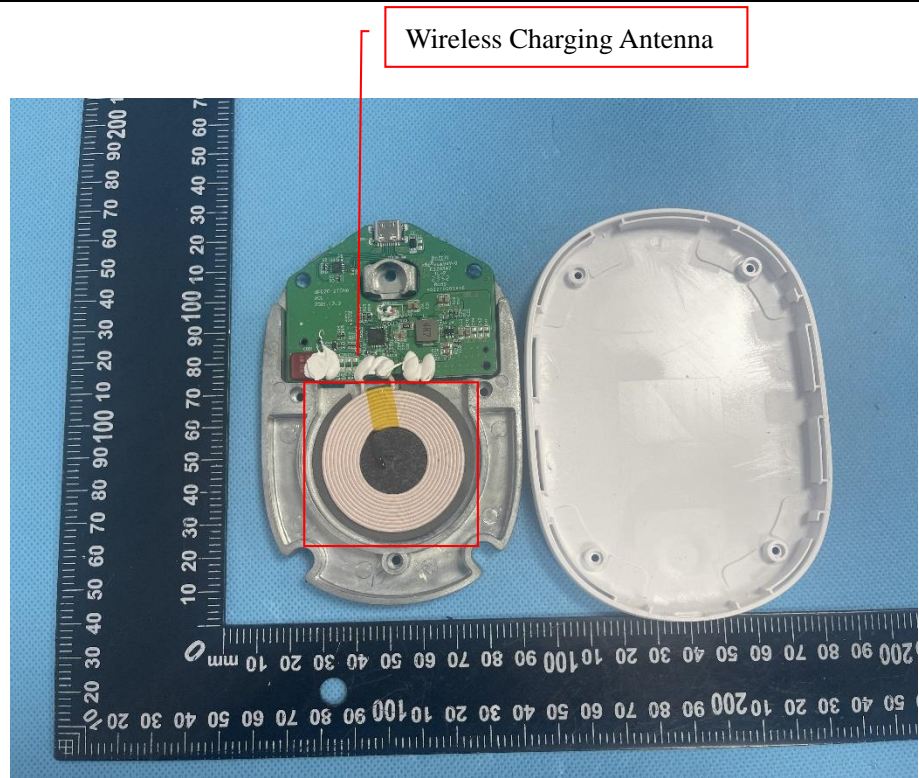
**Solder
Board-Component
View 3**



**Solder
Board-Component
View 4**



Antenna View 1



Antenna View 2

