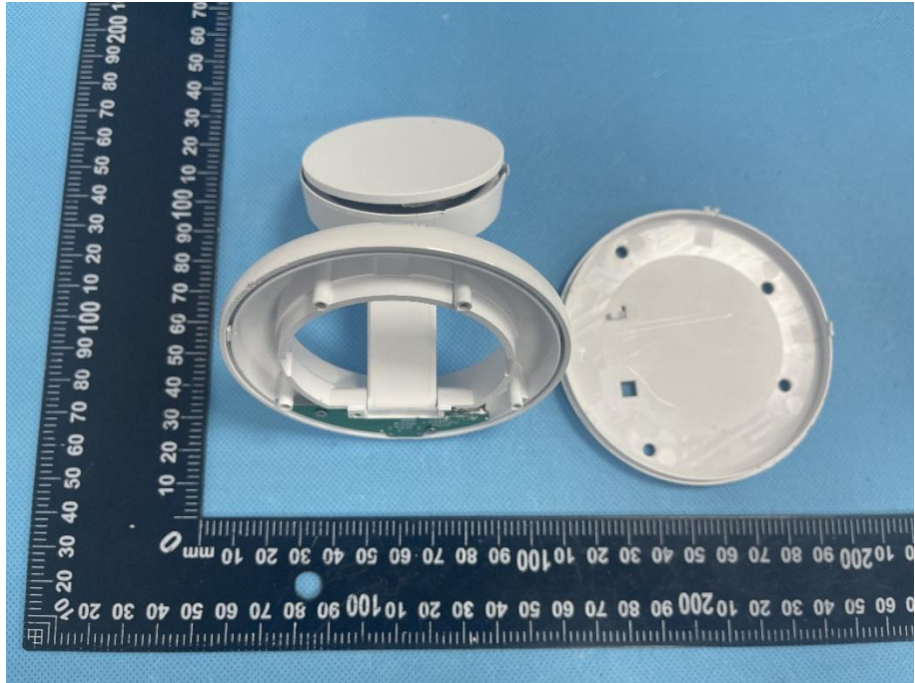
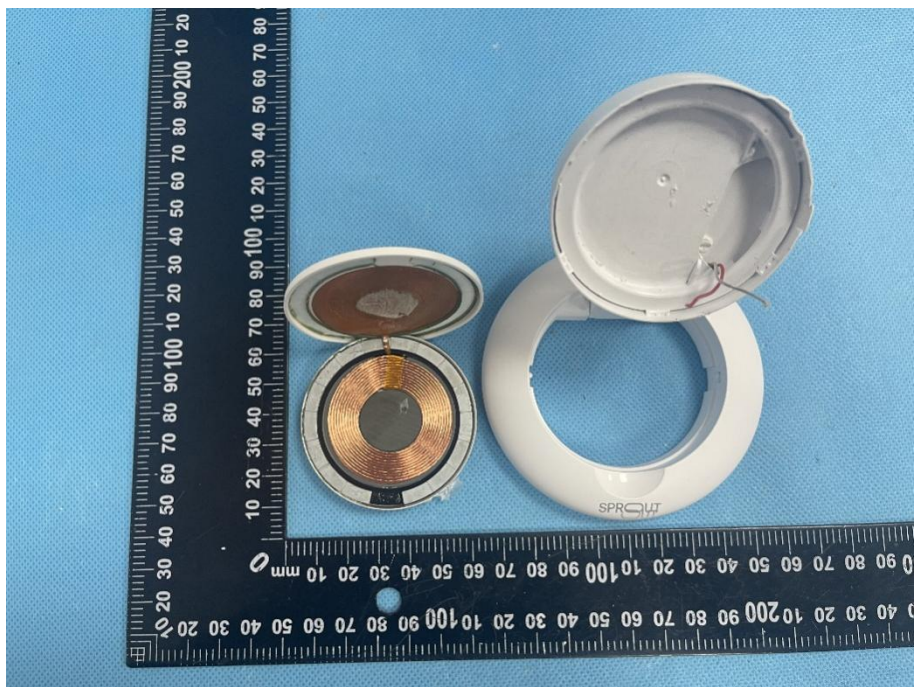


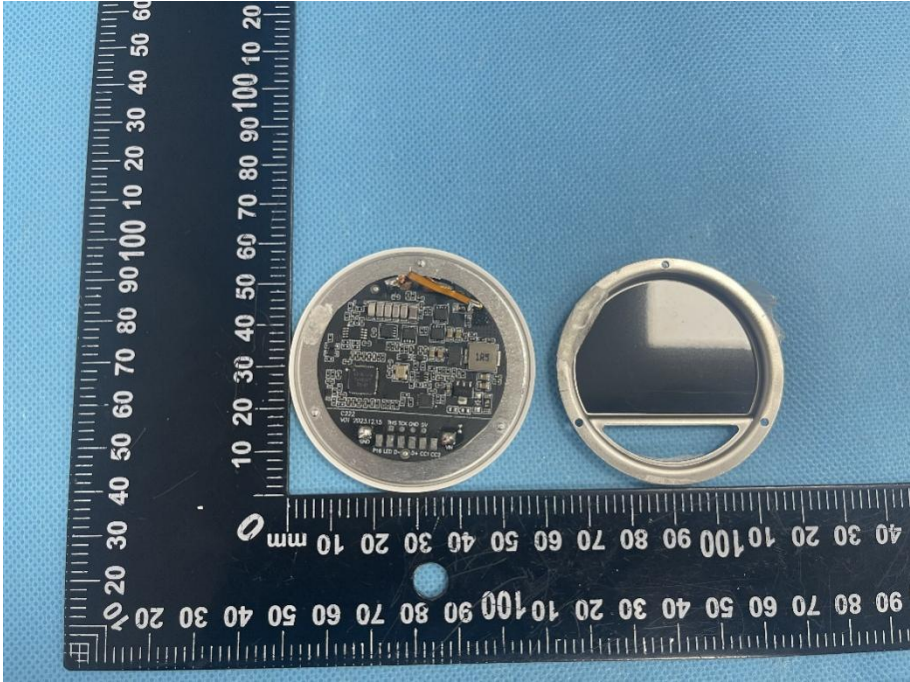
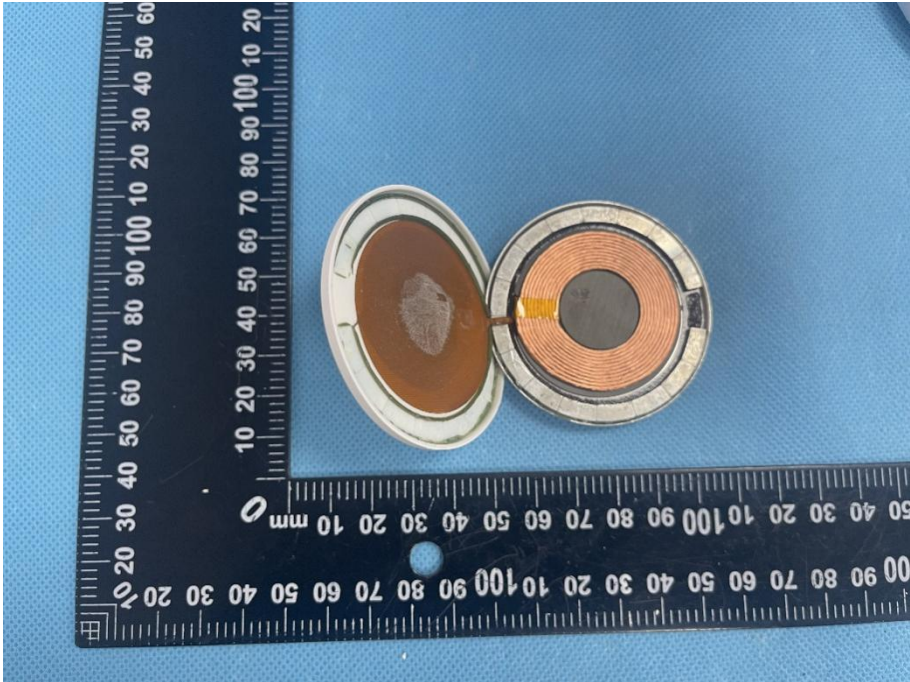
EXHIBIT 3 - EUT INTERNAL PHOTOGRAPHS

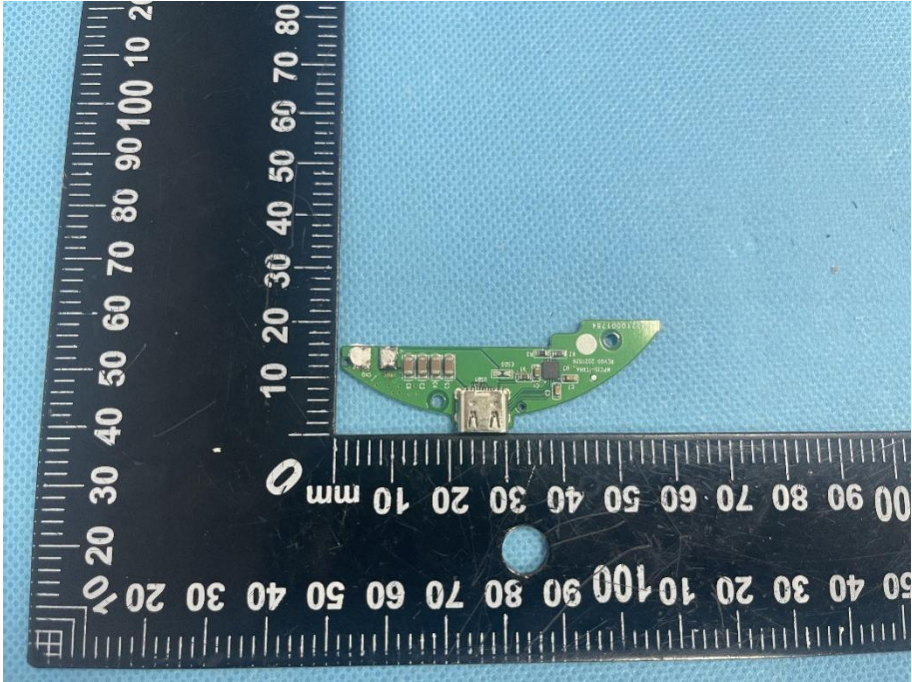

EUT Housing and Board View 1

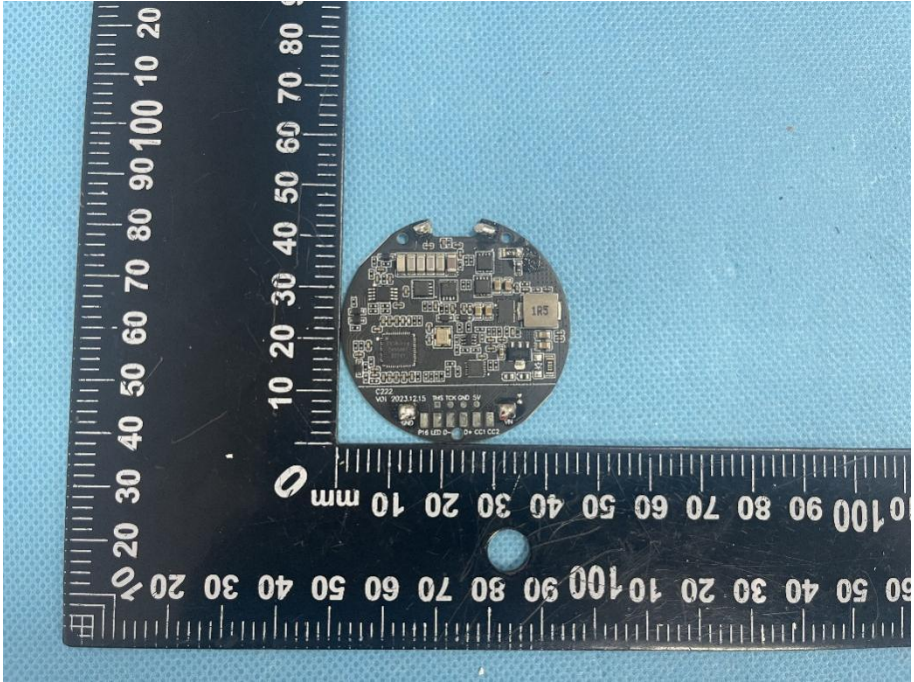
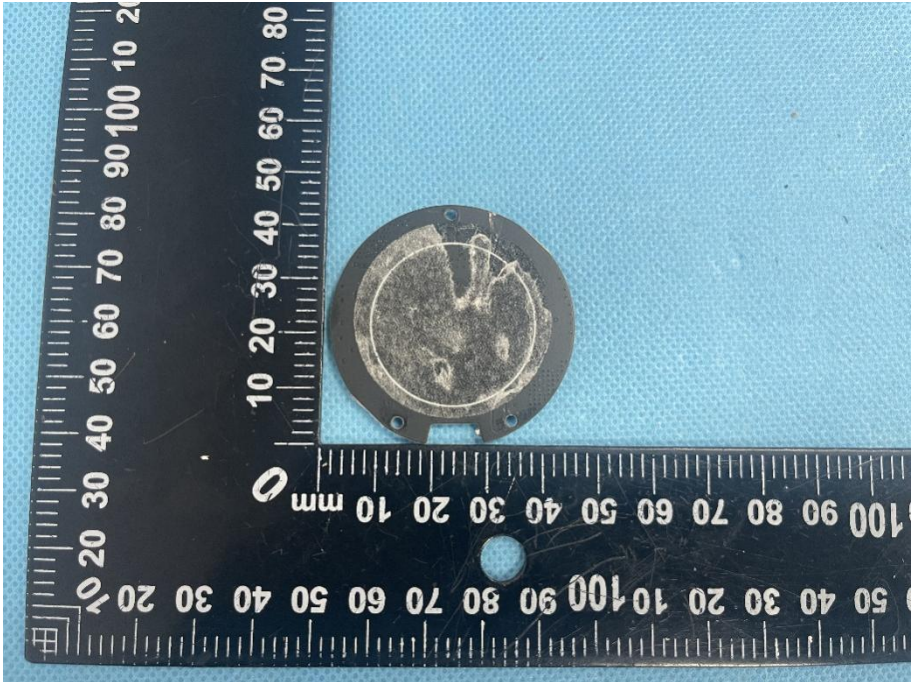


EUT Housing and Board View 2



<p>EUT Housing and Board View 3</p>	 A photograph showing the internal components of an EUT housing. On the left is a circular printed circuit board (PCB) populated with various electronic components, including a central microcontroller, several capacitors, and resistors. To the right is the metal housing lid, which is currently closed. Both items are placed on a blue textured surface next to a black L-shaped ruler for scale. The ruler has markings in millimeters and centimeters.
<p>EUT Housing and Board View 4</p>	 A photograph showing the internal components of an EUT housing from a different perspective. The metal housing lid is open, revealing a circular copper coil (inductor) mounted on a substrate. The lid's interior surface is coated with a brown, viscous material. The components are placed on a blue textured surface next to a black L-shaped ruler for scale, similar to the first image.

<p>Solder Board-Component View 1</p>	 A photograph showing a small, green, curved printed circuit board (PCB) component. The component is positioned on a blue textured surface next to a black L-shaped ruler. The ruler has white markings in millimeters. The component features a USB-A connector on one end and several small surface-mount components, including what appears to be a microcontroller or IC, with some text printed on it. The component is oriented horizontally, with the USB connector pointing towards the left.
<p>Solder Board-Component View 2</p>	 A photograph showing the same green, curved PCB component from a different perspective. It is placed on the same blue textured surface next to the same black L-shaped ruler. In this view, the component is oriented vertically, with the USB connector pointing towards the bottom. The surface-mount components and their markings are more clearly visible from this angle.

<p>Solder Board-Component View 3</p>	 A circular solder board component is shown against a blue background. A black ruler with white markings is placed next to it for scale. The ruler shows measurements in millimeters, with the component's diameter being approximately 80 mm. The component itself is a dark circular board with various electronic components, including a central chip and several smaller components around the perimeter. The text 'C729' and 'W01 002312115' is visible on the board.
<p>Solder Board-Component View 4</p>	 A circular solder board component is shown against a blue background. A black ruler with white markings is placed next to it for scale. The ruler shows measurements in millimeters, with the component's diameter being approximately 80 mm. The component is a dark circular board with a circular area in the center that appears to be a solder mask or a specific component area. The text 'C729' and 'W01 002312115' is visible on the board.

Antenna View

