

EXHIBIT 3 - EUT INTERNAL PHOTOGRAPHS

Model: L3560

EUT Housing and Board View 1



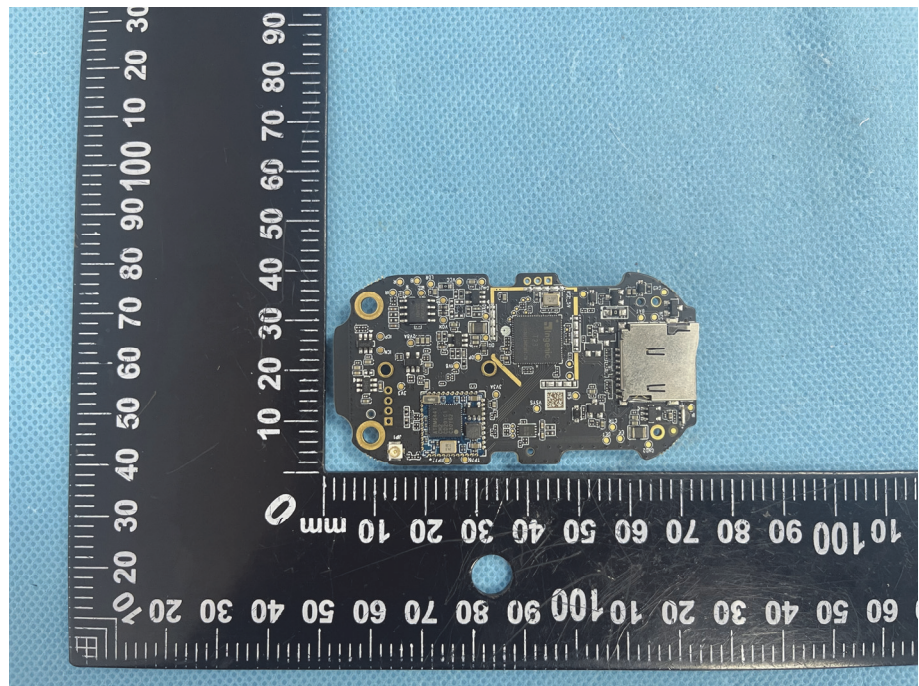
EUT Housing and Board View 2



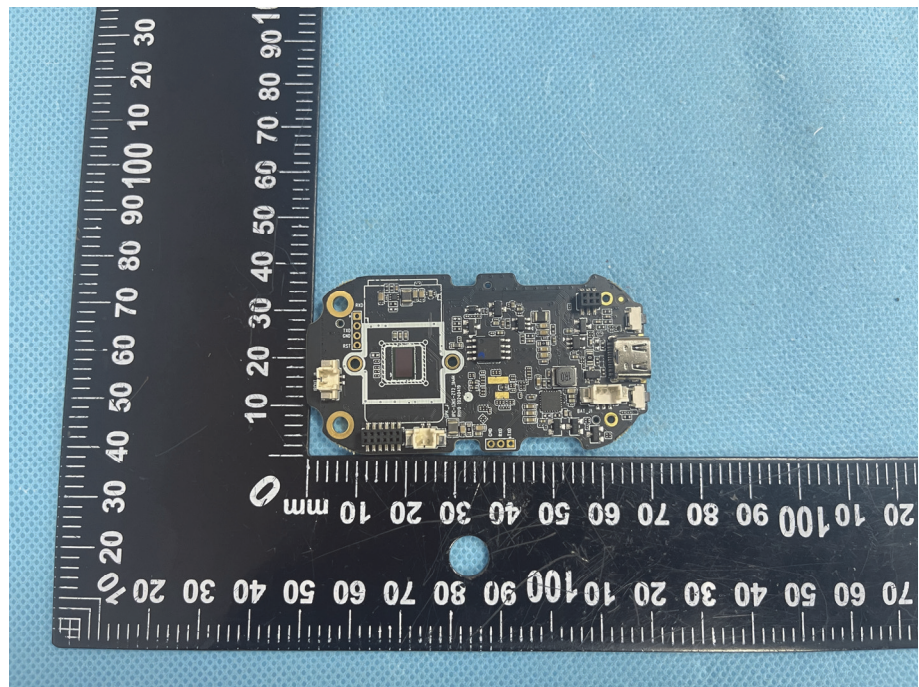
**EUT Housing and
Board View 3**



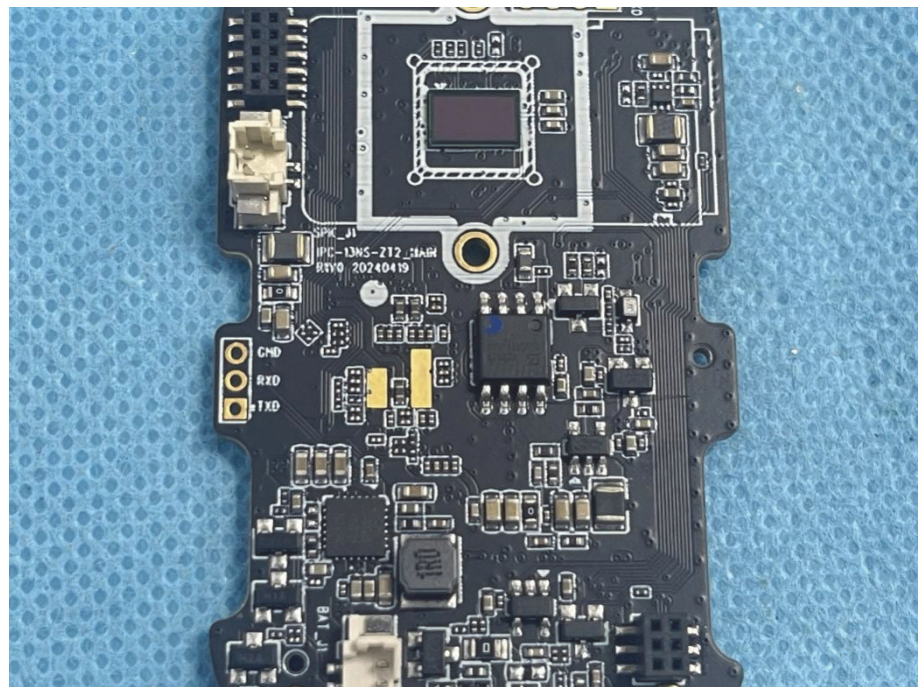
**Solder
Board-Component
View 1**

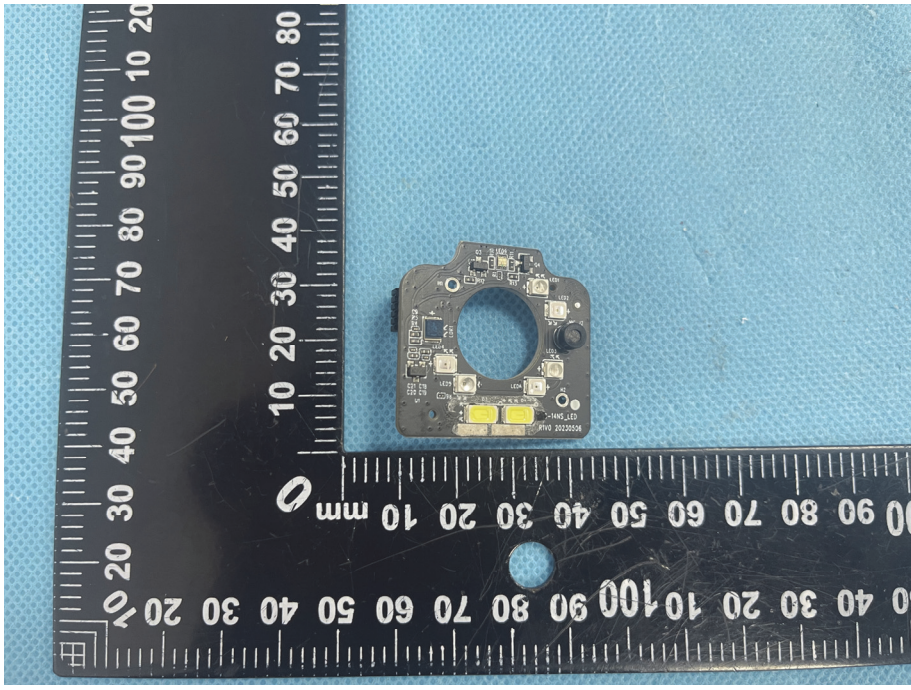
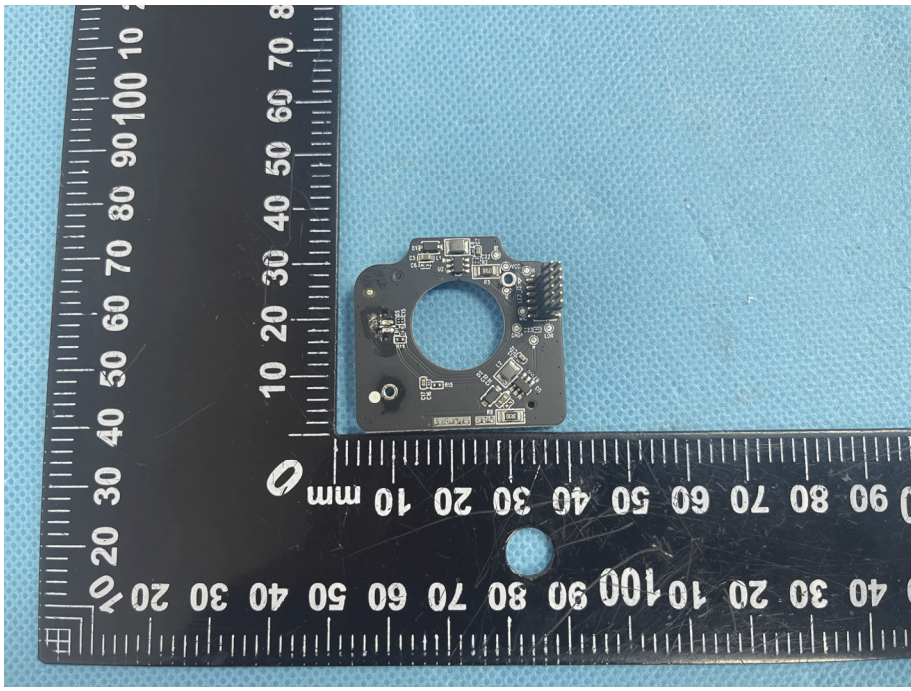


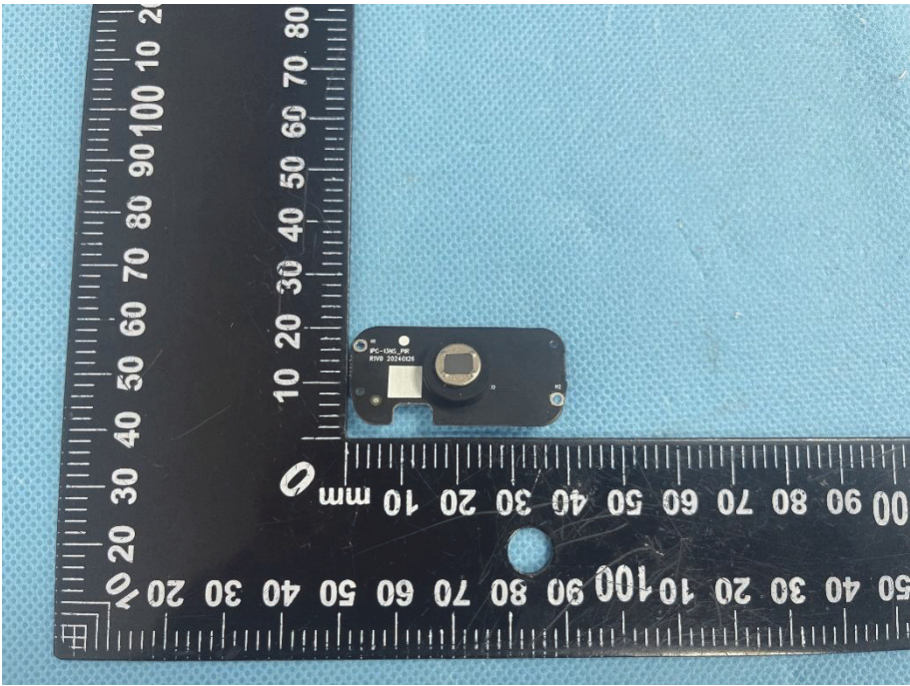
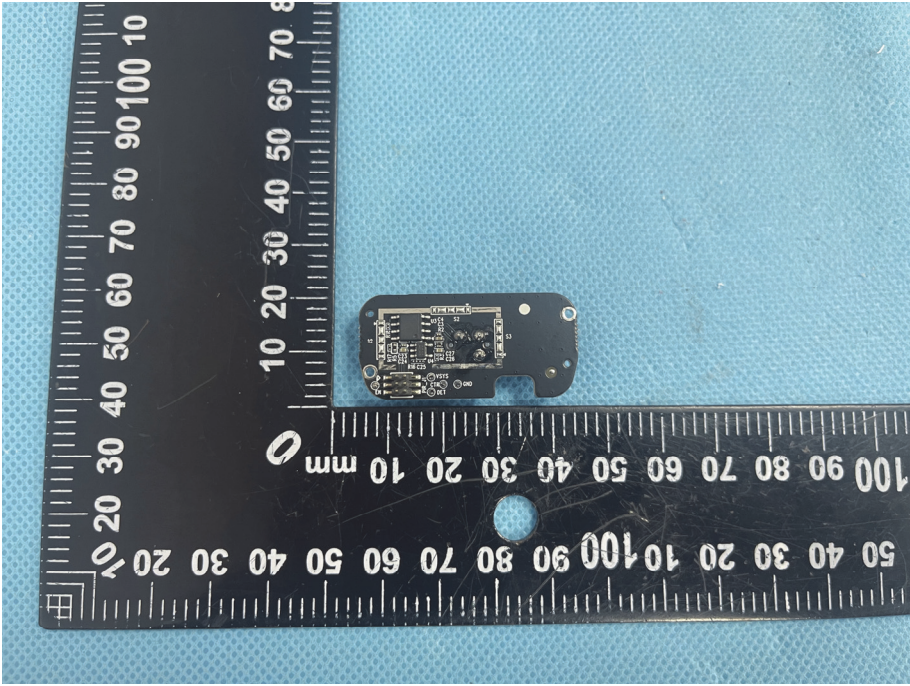
**Solder
Board-Component
View 2**



**Solder
Board-Component
View 3**



<p>Solder Board-Component View 4</p>	 A photograph of a small, dark-colored printed circuit board (PCB) component. The component is irregularly shaped with a large circular hole in the center. It features several surface-mounted components, including two yellow LEDs, a small black component, and various resistors and capacitors. The component is placed on a blue textured surface next to a black L-shaped ruler with white markings in millimeters. The ruler shows the component is approximately 30mm wide and 25mm high.
<p>Solder Board-Component View 5</p>	 A photograph of the same PCB component from a different perspective. This view shows the component's profile and the arrangement of components on its top surface. The central circular hole is clearly visible. The component is placed on the same blue textured surface next to the same black L-shaped ruler for scale. The ruler indicates the component's dimensions are consistent with View 4.

<p>Solder Board-Component View 6</p>	 A photograph of a small, dark-colored solder board component. The component is rectangular with a semi-circular notch on the left side and a circular hole on the right side. It is placed on a blue textured surface next to a black ruler with white markings. The ruler shows measurements in millimeters, with the component positioned between the 10 mm and 20 mm marks. The component has some faint markings, including "PC-104C, MP" and "K99-2024A02".
<p>Solder Board-Component View 7</p>	 A photograph of the same solder board component from a different perspective. This view shows the top surface of the component, revealing various electronic components such as resistors, capacitors, and integrated circuits. The component is placed on the same blue textured surface next to the same black ruler. The ruler shows measurements in millimeters, with the component positioned between the 10 mm and 20 mm marks. The component has various markings, including "PC-104C, MP" and "K99-2024A02".