



SPECIFICATION FOR APPROVAL

编号: 2024012601

File No. _____

版本: 1.0

Revision _____

CUSTOMER: CE LINK LIMITED

CUSTOMER NO: _____

PART NAME: WIFI Antenna 1.13Black MHF1L=45MM

SL308P.300001.P01

SUPPLIER NO: _____

Date:

Q'TY: PCS

CUSTOMER APPROVED BY		
APPROVAL	CHIEF	SUPERVISOR

SUPPLIER SIGNATURE		
APPROVAL	CHECK	DESIGN
sunny	ZouJie	LuoYi

SH-RD-F04-A

add: 24 Ju Xi ang er Lu, Xi ang Wei cun, Dalang Town, Dongguan

Telephone: 0769-82226176

Fax: 0769-82226175

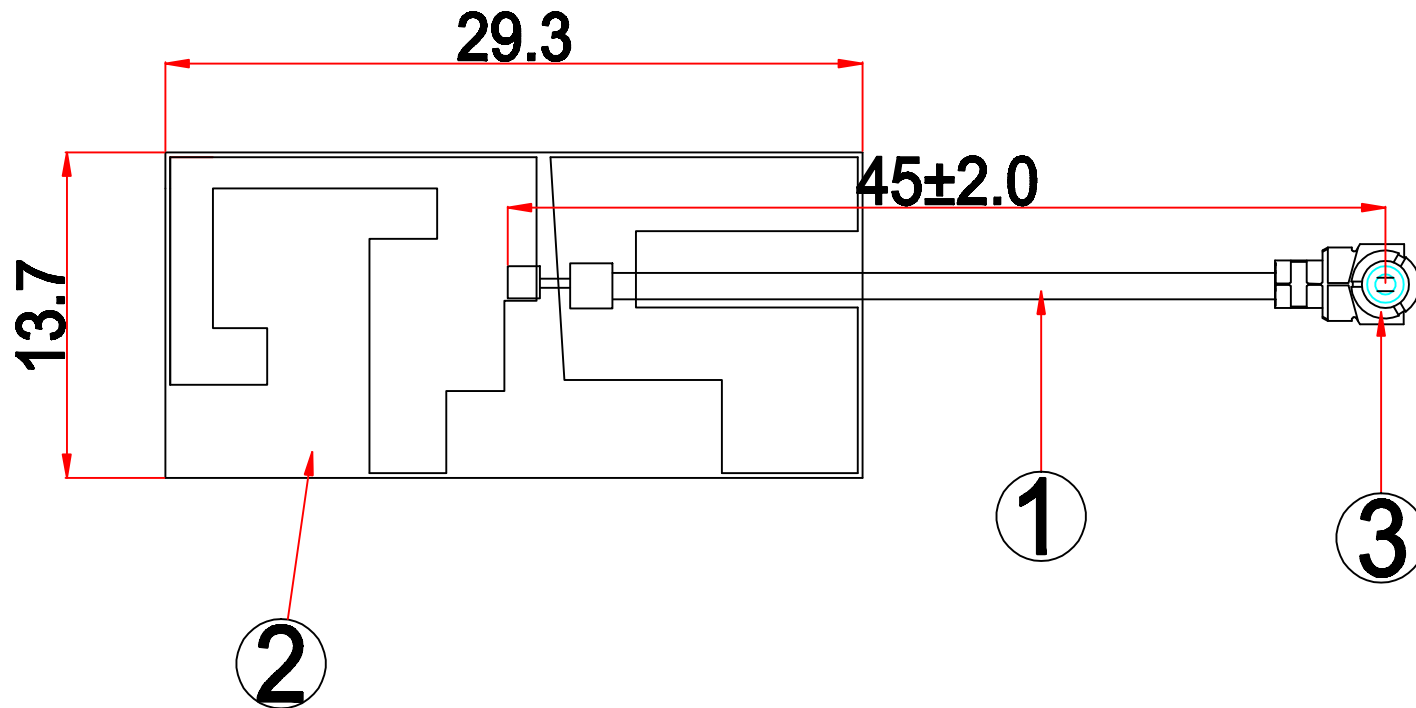


Item list of the acknowledgement


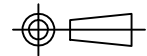
NO.	内容 (Contents)	页数 (Number of Page)	页码 (Page Code)
1	Spec Cover	1	1
2	Spec Item	1	2
3	Drawing	1	3
4	Test Reports	1	4
5	S Parameter	1	5
6	Gain Test	1	6
7	Antenna Assembly diagram	1	7
8	Gain, efficiency	1	8
9	-	-	-
10	-	-	-
11	-	-	-
12	-	-	-

add: 24 Ju Xi ang er Lu, Xi ang Wei cun, Dal ang Town, Dongguan

Tel ephone; 0769-82226176 Fax; 0769-82226175



3	MHF1	O.D.1.13 Dedicated	1
2	FPC	29.33*13.7mm	1
1	Coaxial Cable	1.13 Black	1
NO	PART NAME	DESCRIPTION	Q.TY

 Dongguan SongHui Co.,Ltd.			CUSTOMER			
			PART NO			
			TITLE		2.4-5.8GHzAntenna L=45mm	
			S.H P/NO		SL308P.300001.P01	
	TOLERANCE UNLESS OTHERWISE SPECIFIED		SIZE	DRAWN	CHECKED	APPROVED
	UNIT:mm	ANGLES ±0.5°	X. ±2.0	A4	LUOYI	ZOUJIE
	SHEET: 1/1	X.XX ±0.2	XX. ±5.0			
SCALE: 1/1	X.X ±0.5	DATE:2024-01-26				



Test Reports

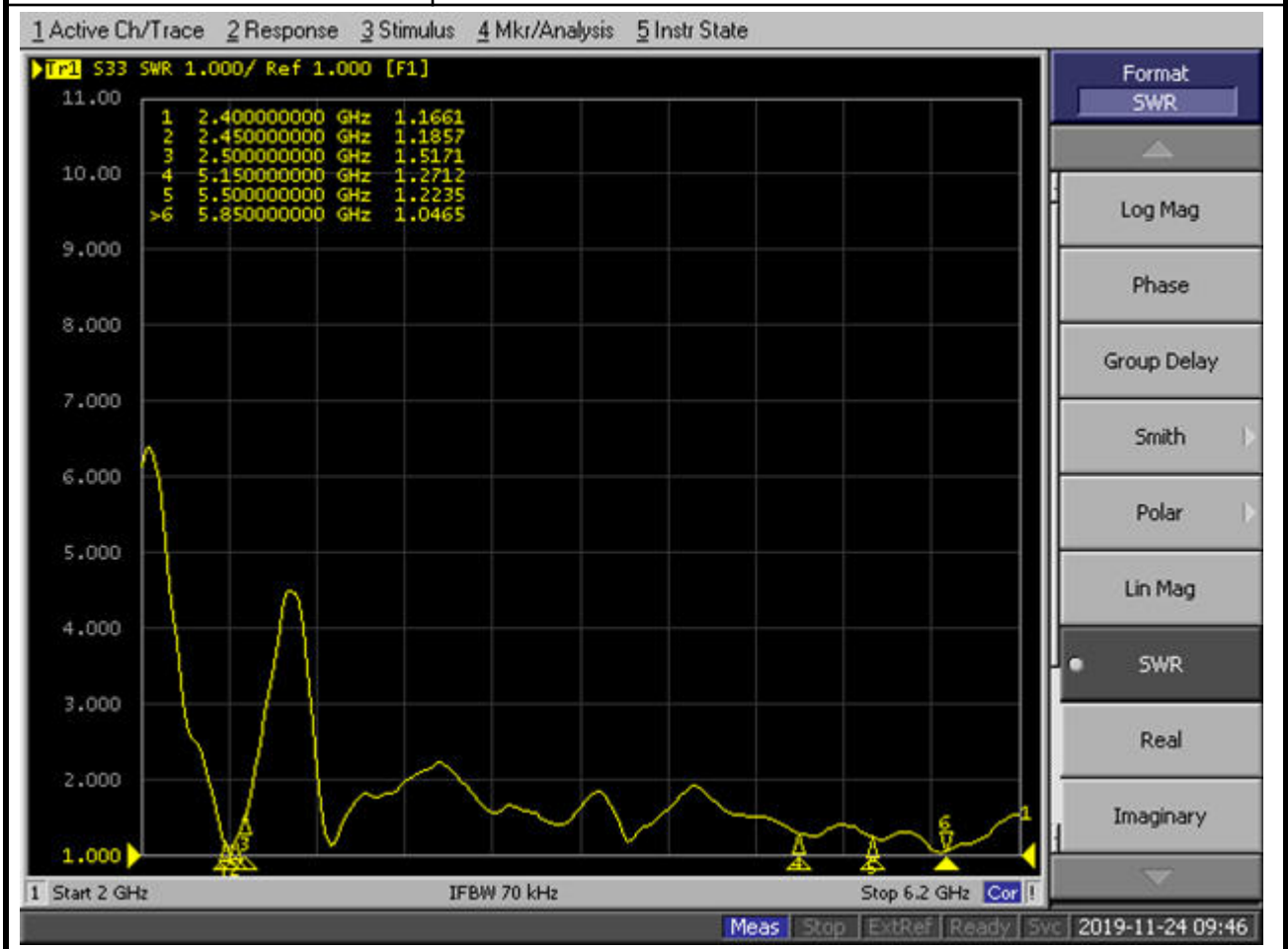
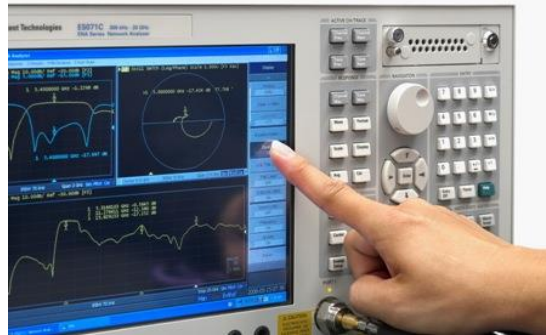
Electrical Properties	
Frequency	2400-2500MHz
Impedance	50 Ohm Nominal
V.S.W.R	1.92 : 1 Max
Return Loss	-10 dB Max
Radiation	Omni-directional
Gain (Peak)	2dBi
Efficiency	>60%
Polarization	Linear, Vertical
Admitted Power	1 W
Connector	MHF1
Physical Properties	
Antenna Material	FPC
Cable Type	O.D. 1.13mm // L=45mm
Operating Temp.	-10 ~ +60 °C
Storage Temp.	-10 ~ +70 °C
Cable Color	Black

add: 24 Ju Xi ang er Lu, Xi ang Wei cun, Dal ang Town, Dongguan



S Parameter Test

Agilent E5071C



add: 24 Ju Xi ang er Lu, Xi ang Wei cun, Dal ang Town, Dongguan

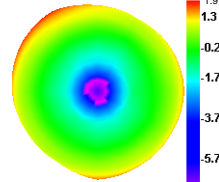
Tel ephone: 0769-82226176 Fax: 0769-82226175

Gain, Efficiency

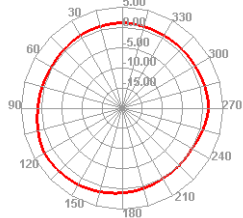
Freq (MHz)	Effi (%)	Gain (dBi)
2400	77.85	1.95
2410	86.23	1.99
2420	83.39	1.98
2430	79.29	1.85
2440	75.43	2
2450	72.26	1.83
2460	72.89	1.92
2470	70.38	1.78
2480	70.76	1.75
2490	69.58	1.83
2500	66.98	1.79

2400.00MHz - 2500

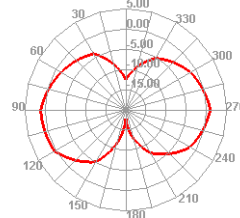
2400.000MHz



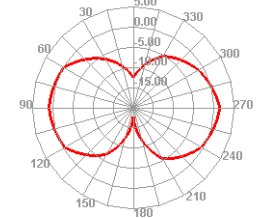
2400.000MHz H



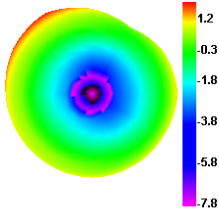
2400.000MHz E1



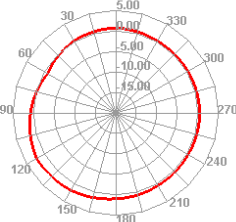
2400.000MHz E2



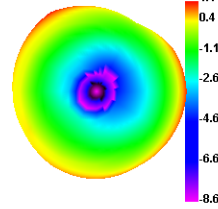
2450.000MHz



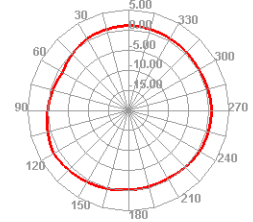
2450.000MHz H



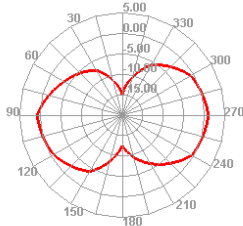
2500.000MHz



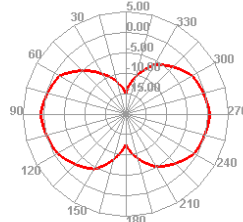
2500.000MHz H



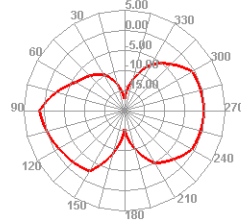
2450.000MHz E1



2450.000MHz E2



2500.000MHz E1



2500.000MHz E2

