

### EXHIBIT 3 - EUT INTERNAL PHOTOGRAPHS

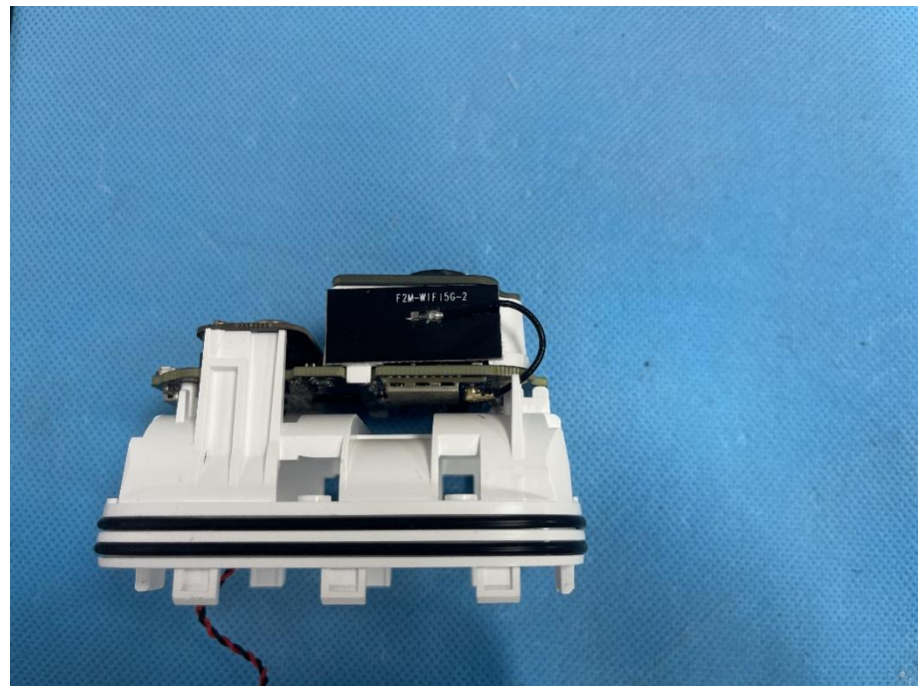
**EUT Housing and Board View 1**



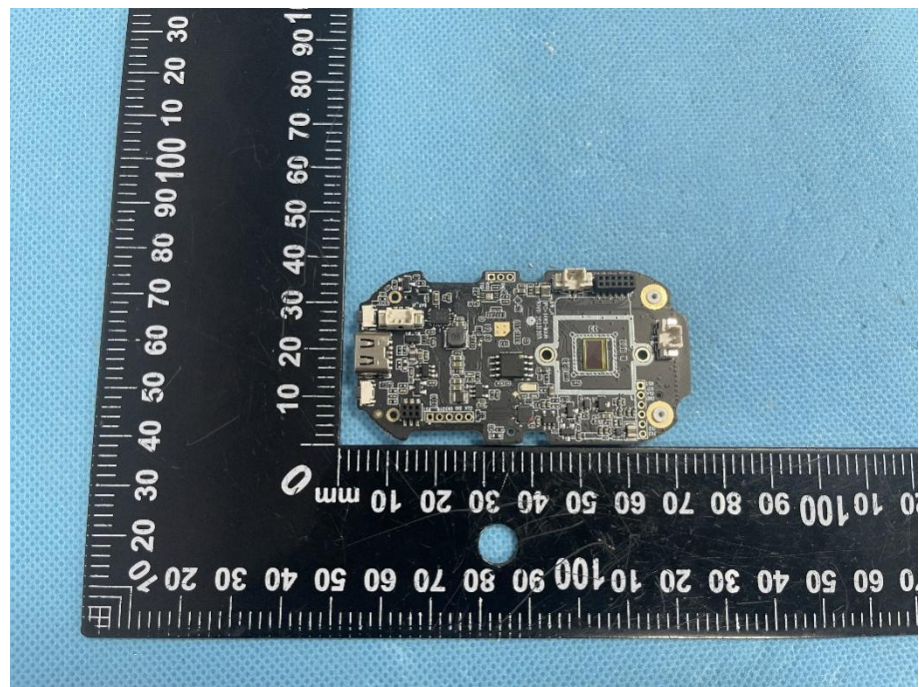
**EUT Housing and Board View 2**



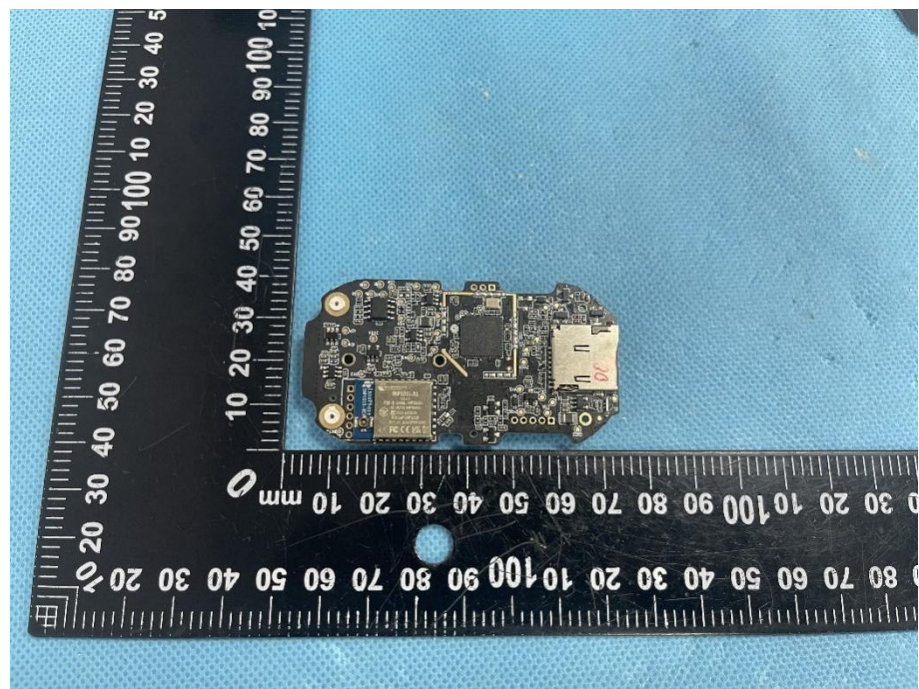
**EUT Housing and  
Board View 3**



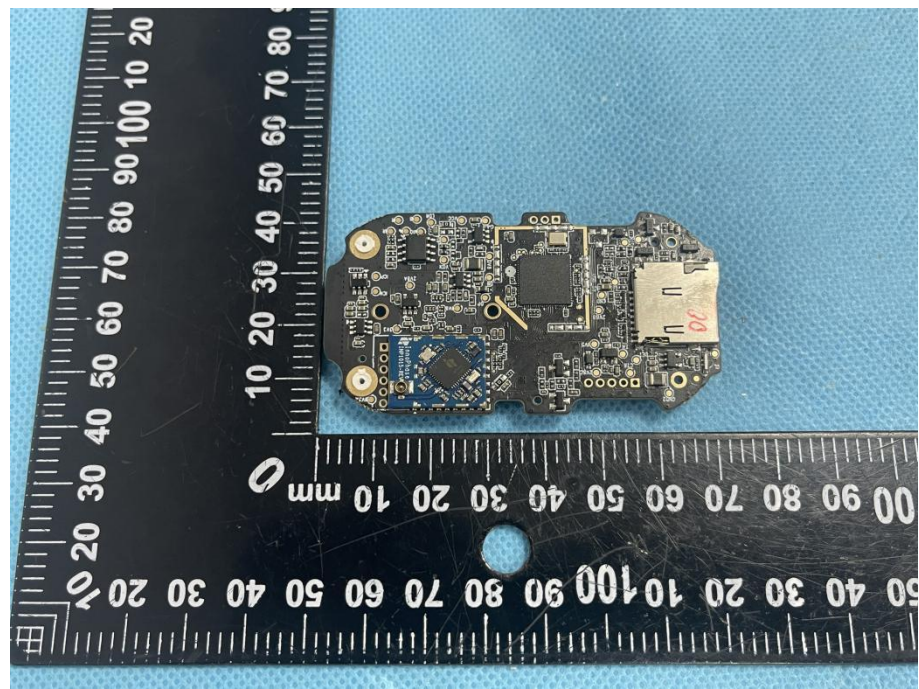
**Solder  
Board-Component  
View 1**

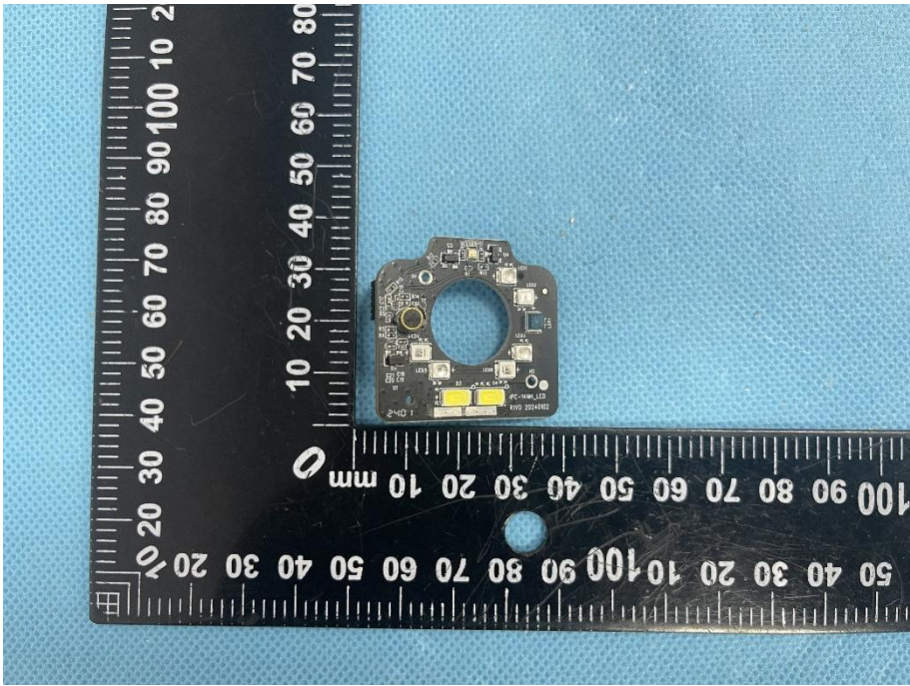
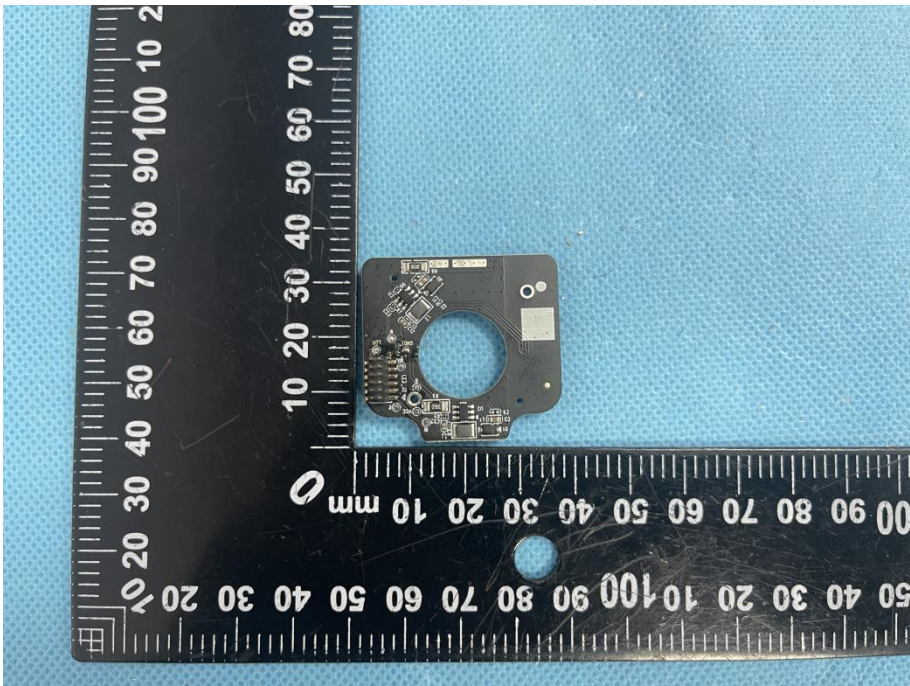


**Solder  
Board-Component  
View 2**

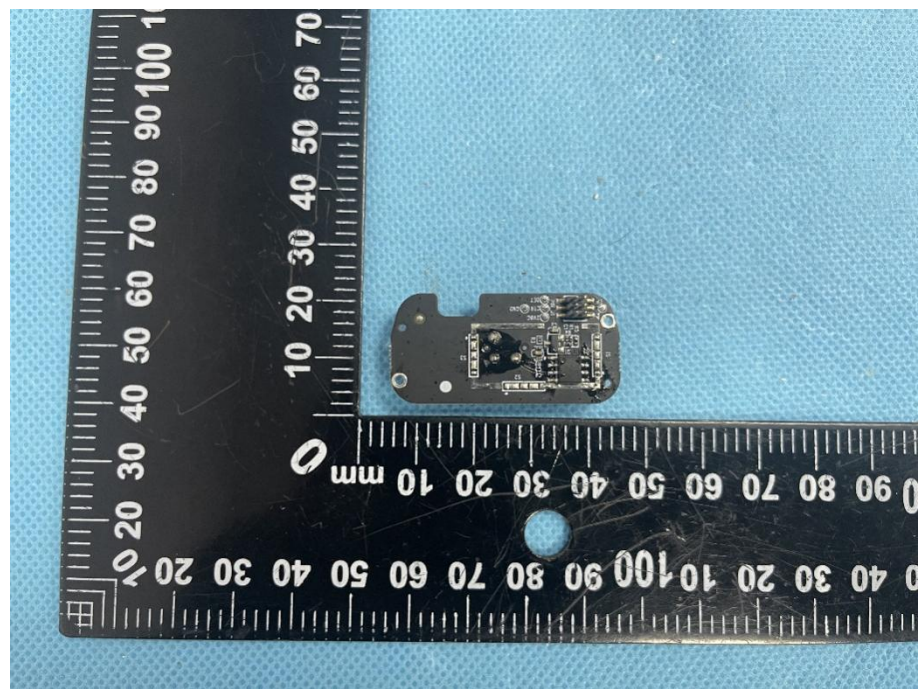


**Solder  
Board-Component  
View 3**

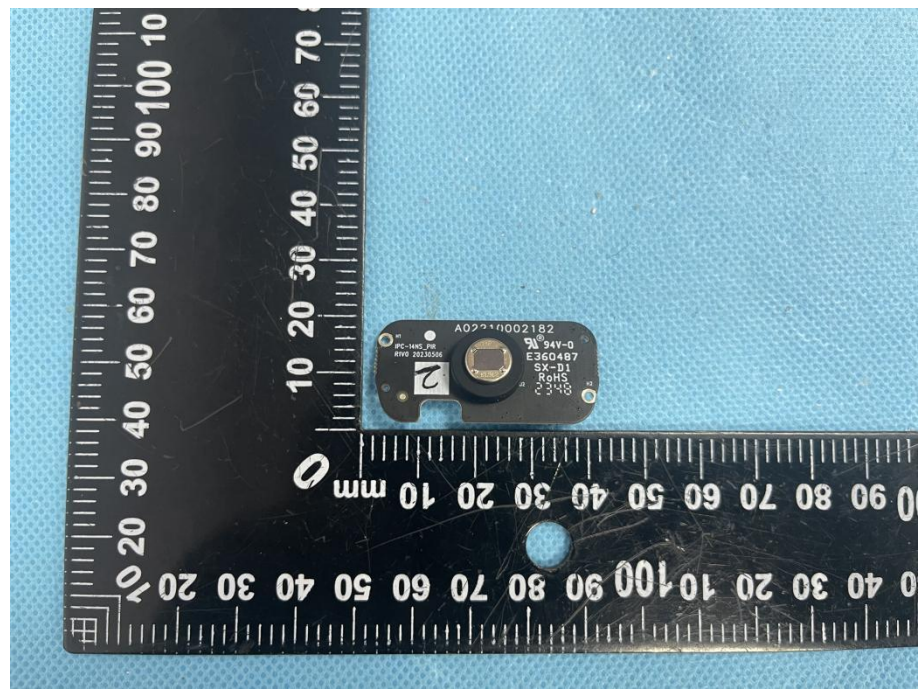


<p><b>Solder Board-Component View 4</b></p>	 A photograph of a small, dark-colored printed circuit board (PCB) component with a central circular hole. The component is placed on a blue textured surface next to a black L-shaped ruler. The ruler has white markings in millimeters, with the vertical scale on the left and the horizontal scale on the bottom. The component is positioned roughly between the 10mm and 30mm marks on both scales.
<p><b>Solder Board-Component View 5</b></p>	 A photograph of the same PCB component as in View 4, but from a different angle. It is placed on the same blue textured surface next to the same black L-shaped ruler. The component is positioned roughly between the 10mm and 30mm marks on both scales, showing a different side of the board.

**Solder  
Board-Component  
View 6**



**Solder  
Board-Component  
View 7**



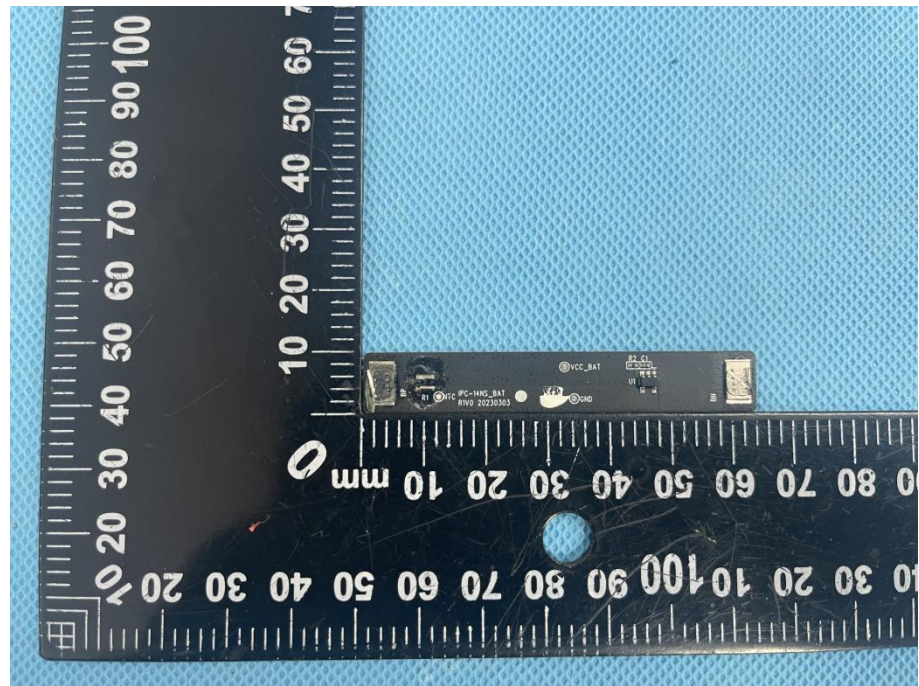
**Solder  
Board-Component  
View 8**



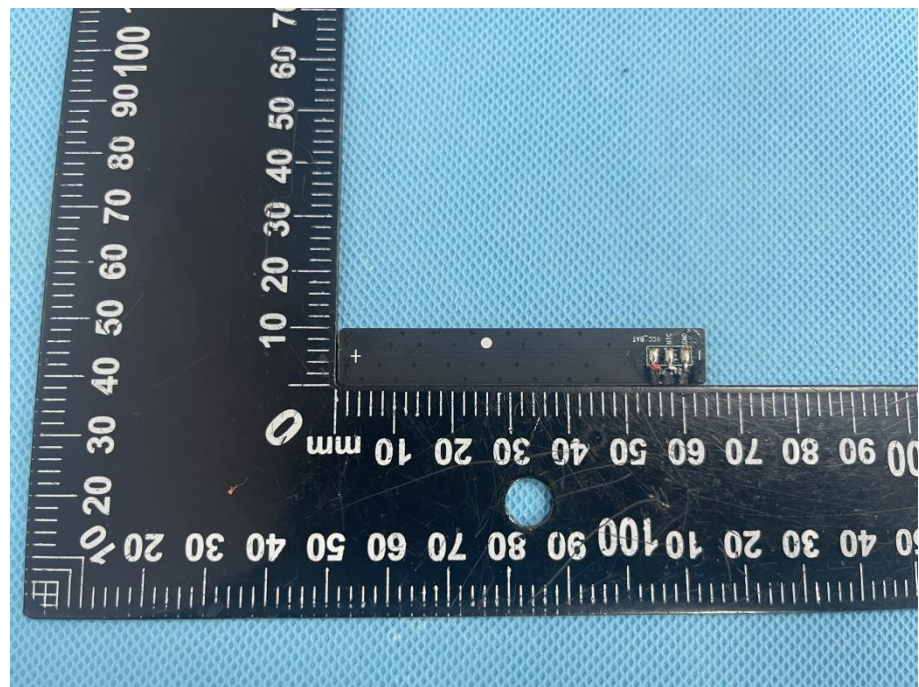
**Solder  
Board-Component  
View 9**



**Solder  
Board-Component  
View 10**



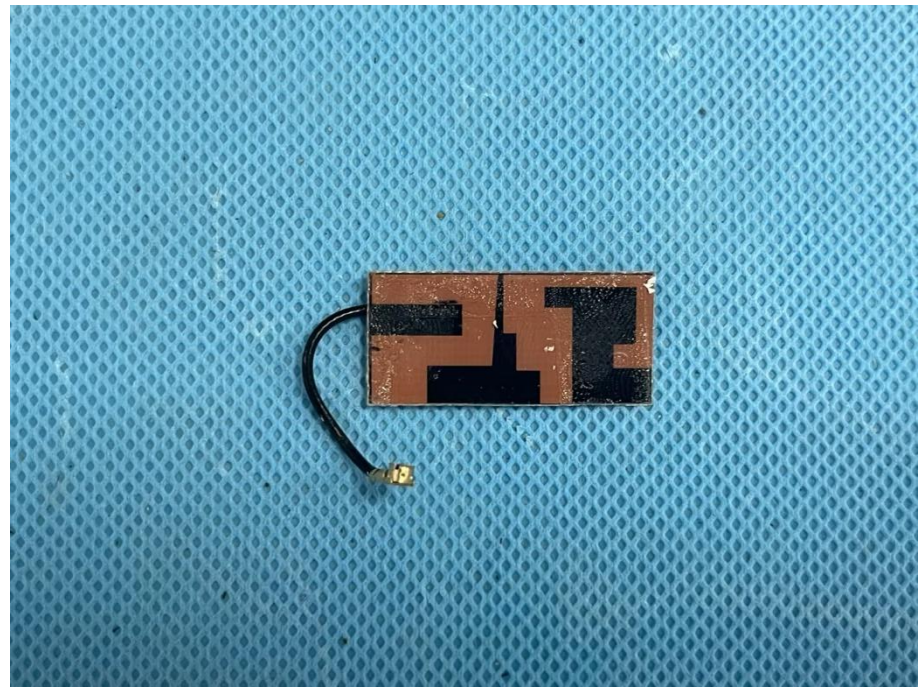
**Solder  
Board-Component  
View 11**



**Solder  
Board-Component  
View 12**



**Solder  
Board-Component  
View 13**





**Antenna View**

