

QUICK START GUIDE



SOLAR BATTERY CAMERA

Content

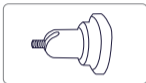
In the Box	02
Product Overview	04
Basic Parameters	06
Set Up Your Camera	07
Mount Your Camera	11
Notice	16
Customer Service	17

In the Box

After opening the box, please check the following picture to see if the accessories are complete.



Camera



Mounting Bracket



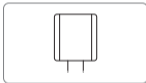
Mounting
Screw Pack



Quick
Start Guide



USB Cable
(Optional)



USB Adapter
(Optional)

Introduction

1. Green Energy:

The IP camera will keep working permanently with an integrated solar panel if it has gotten 4 hours sunshine each day.

2. Long Working Time:

The camera can work around 6 months without any sunshine if triggered 20 times per day (10 times in the day and 10 times in the night).

3. Light Up the Night:

The camera can turn the night into day with the built-in IR LEDs and Spotlights. The night visibility ranges up to 8m.

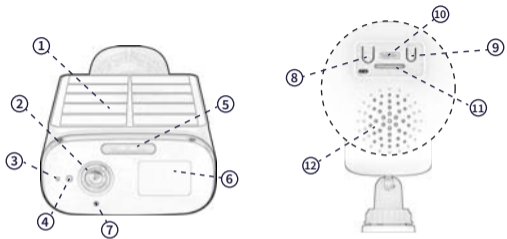
4. The key is in the detail:

Capture each detail of the event occurs around your home by a 2.5K ultra HD Resolution.

5. Storage:

Support local TF card (Max 128G) storage or cloud storage.

Product Overview



① Solar Panel

⑤ Floodlights

⑨ Reset Button

② Camera Lens

⑥ PIR

⑩ Charging Port

③ Status LED

⑦ Microphone

⑪ TF Card Slot

④ Photosensitive Sensor

⑧ Power Button

⑫ Speaker

Status LED

LED Status	Description
Slow blinking Red	Ready to connect
Fast blinking Red	Disconnected from the internet
Slow blinking Blue	Connected to the router successfully
Solid Blue	The camera has been added successfully and working normally
Flashing blue and red alternately	A firmware update is in progress

Basic Parameters

Effective Pixels	2560*1440	Storage	TF Card (Max 128G)
Resolution	2.5K	Wi-Fi	Only 2.4GHz Wi-Fi
FOV(H/V/D)	100°/52°/122°	Network Security	WPA-PSK /WPA2-PSK
Lens	3.5mm@F2.0	Operating Temp	-20°C~+50°C
IR LED	8m	Battery Capacity	10400mAh
Floodlights	8m	Item Weight	436g
Audio	Built-in Mic / Speaker	Product Dimensions	129(L)*84(W)* 42(H) mm
PIR	8m (100°)	Charging Power	Type-C, DC5V/1A
Weather Proof	IP66	Mounting Type	Wall Mount
Solar Panel	Max. 1.2W		

Set Up Your Camera

Step 1

Download

Download the Tuya Smart or Smart Life App from the Apple AppStore or Google Play, or by scanning the QR code below.



Download on the
APP Store



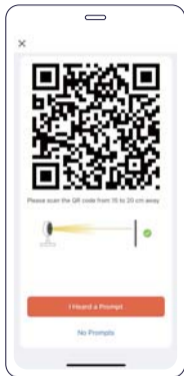
Get it on
Google play

Step 2

Connect it to the APP

1. Sign up an App account, go to the app homepage, tap Add Device, and select the smart camera(Wi-Fi).

3. Please click Next, select a stable network and enter a password. The camera of the device scans the QR code generated by the mobile phone, keeps a distance of 15 to 20cm and does not move until the sound of “ Di ” is heard, and finally follows the steps on the App to complete the addition.



 When adding devices, please make the camera and mobile phone connect to a same Wi-Fi router.

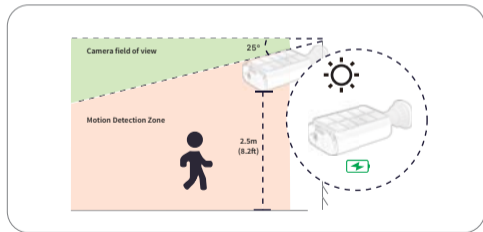
Mount Your Camera

Select a location

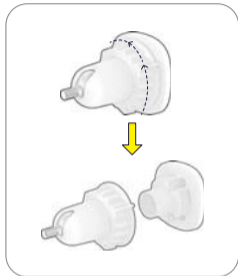
The camera can be mounted on a wall. Select a location where you can get the desired view and make sure the solar panel is fully exposed to direct sunlight.

Make sure to pick a place within range of your home network. Please try streaming video before you mount your camera.

We recommend hanging it 2.5m (8.2 ft) above the ground and maintaining an angle of about 25 degrees from the horizontal ground.

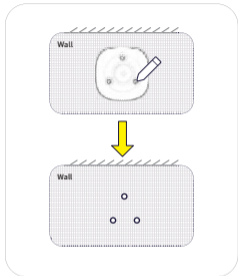


Mount the camera



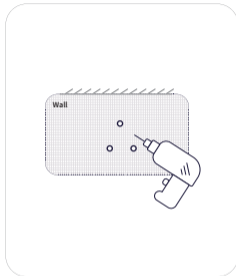
Step 1

Turn the knob of the mounting bracket counterclockwise to loosen and disassemble it.



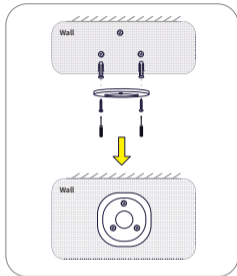
Step 2

Align the mounting plate and mark the three circles where the holes need to be drilled.



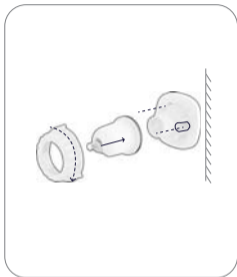
Step 3

Drill three holes above the three marked circles.



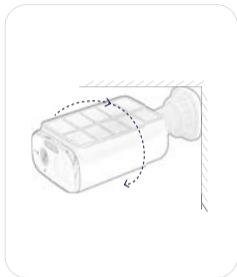
Step 4

Insert three anchors into the holes and use the screws to affix the bracket over the anchors.



Step 5

Rotate the knob of the mounting bracket clockwise to secure it to the base of the mounting bracket.

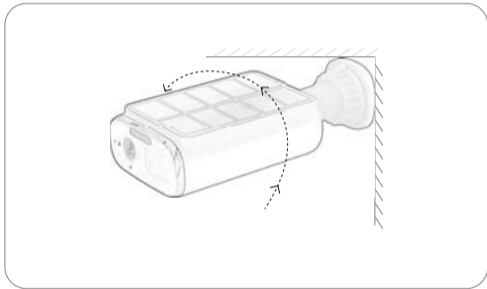


Step 6

Align the hole at the bottom of the camera with the mounting bracket, and turn the camera clockwise to fix the camera to the mounting bracket. Rotate the camera to adjust the view and check it using the live stream which you can access in the App.

How to remove the camera

Hold the main body of the camera, then rotate anticlockwise to remove the camera from the mounting bracket.



Notice

FCC Radiation Exposure Statement:

This equipment complies with FCC radiation exposure limits set forth for an uncontrolled environment. This equipment should be installed and operated with minimum distance 20cm between the radiator & your body.

FCC Warning

This device complies with Part 15 of the FCC Rules. Operation is subject to the following two conditions:

(1) This device may not cause harmful interference, and (2) this device must accept any interference received, including interference that may cause undesired operation.

Note: This equipment has been tested and found to comply with the limits for a Class B digital device, pursuant to part 15 of the FCC Rules. These limits are designed to provide reasonable protection against harmful interference in a residential installation. This equipment generates, uses and can radiate radio frequency energy and, if not installed and used in accordance with the instructions, may cause harmful interference to radio communications. However, there is no guarantee that interference will not occur in a particular installation.

If this equipment does cause harmful interference to radio or television reception, which can be determined by turning the equipment off and on, the user is encouraged to try to correct the interference by one or more of the following measures:

- Reorient or relocate the receiving antenna.
- Increase the separation between the equipment and receiver.
- Connect the equipment into an outlet on a circuit different from that to which the receiver is connected.
- Consult the dealer or an experienced radio/TV technician for help.

NOTE 2: Any changes or modifications to this unit not expressly approved by the party responsible for compliance could void the user's authority to operate the equipment.



CAUTION

Risk of fire or explosion if the battery is replaced by an incorrect type.

Avoid replacement of a battery with an incorrect type that can defeat a safeguard.

Avoid disposal of a battery into fire or a hot oven, or mechanically crushing or cutting off a battery, that can result in an explosion.

Do not leave a battery in an extremely high temperature surrounding environment that can result in an explosion or the leakage of flammable liquid or gas; Do not leave a battery subjected to the extremely low air pressure that may result in an explosion or the leakage of flammable liquid or gas.

Customer Service

Warranty

12-month Limited Warranty