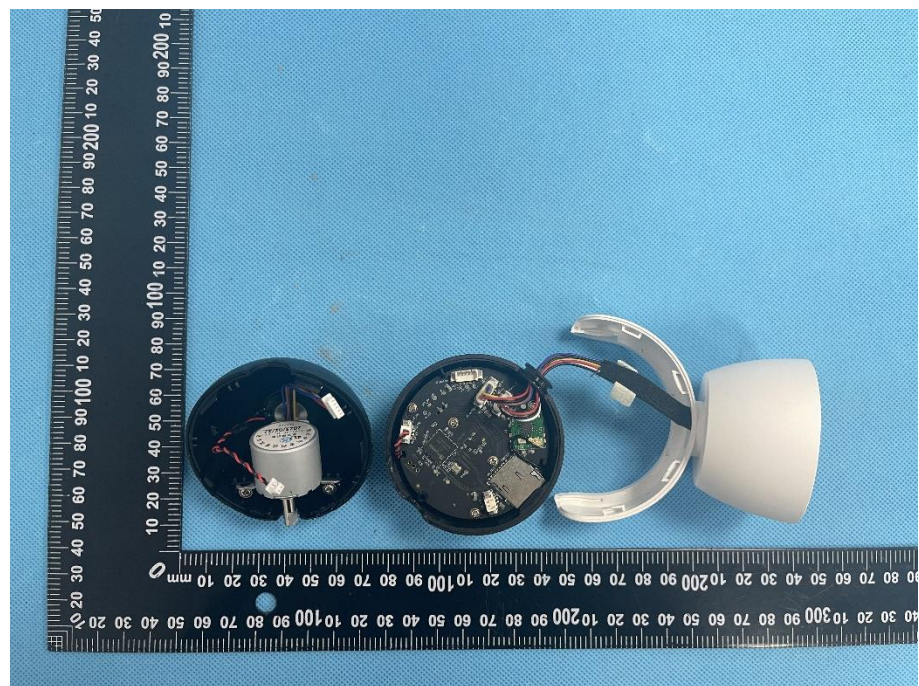


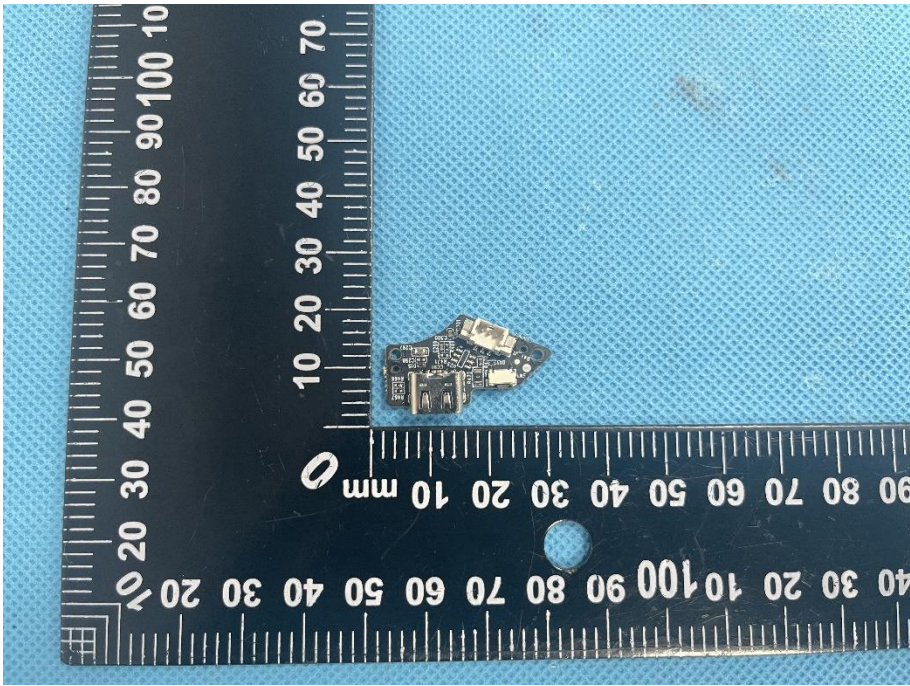
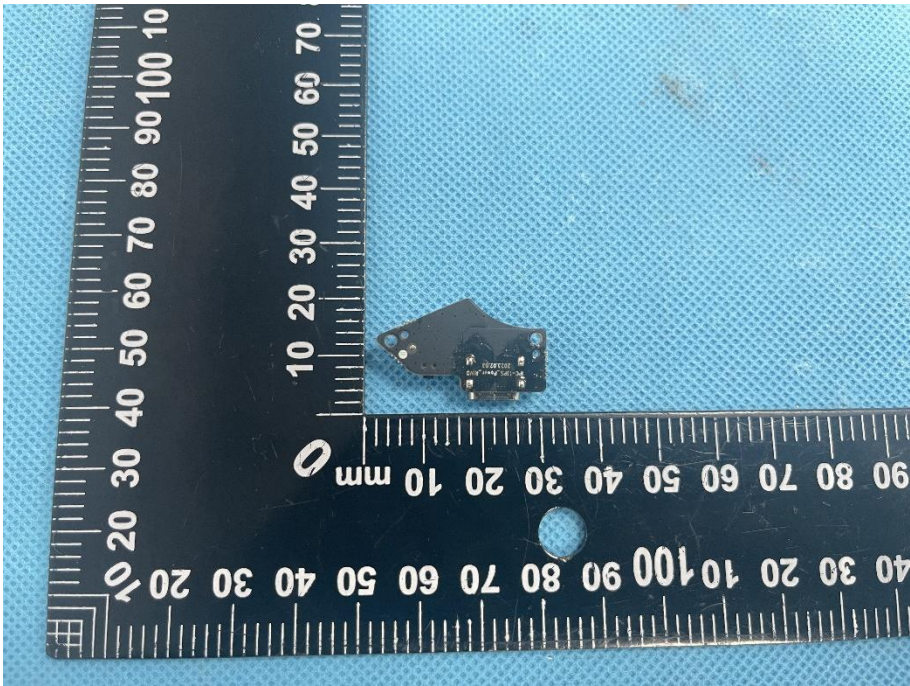
EXHIBIT 3 - EUT INTERNAL PHOTOGRAPHS

EUT Housing and Board View 1

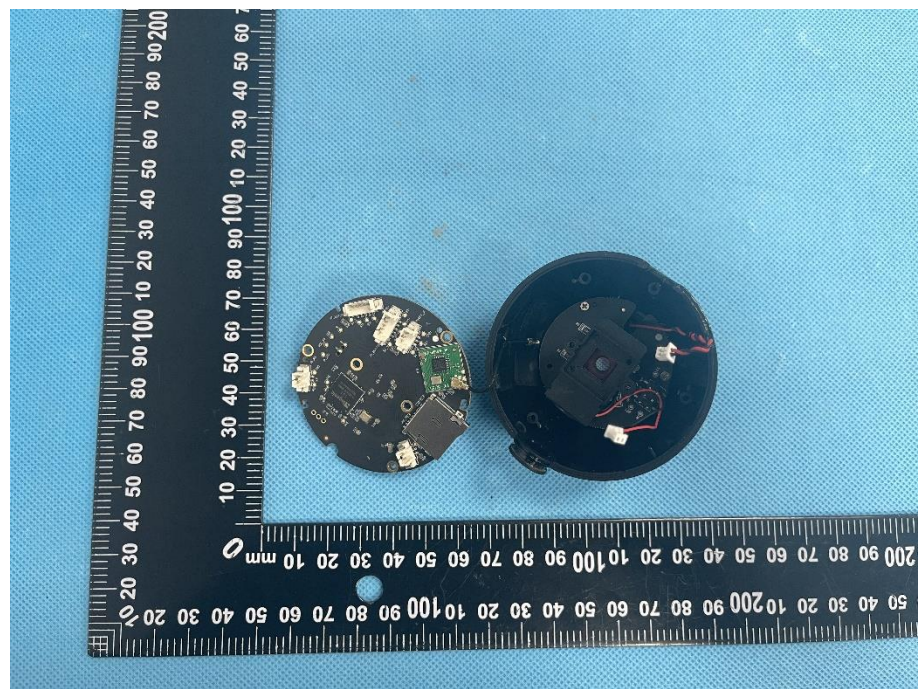


EUT Housing and Board View 2

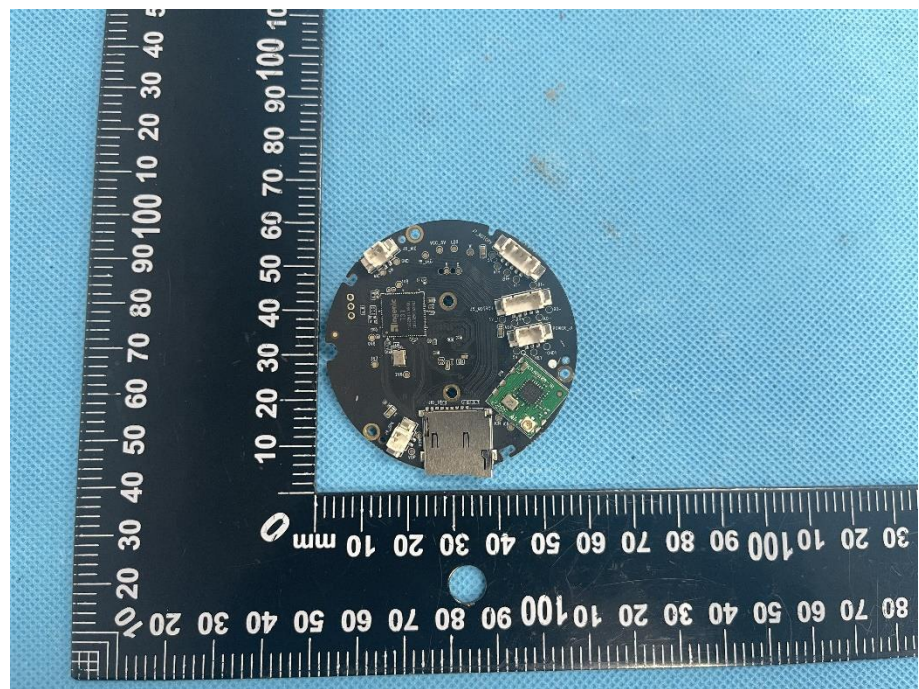


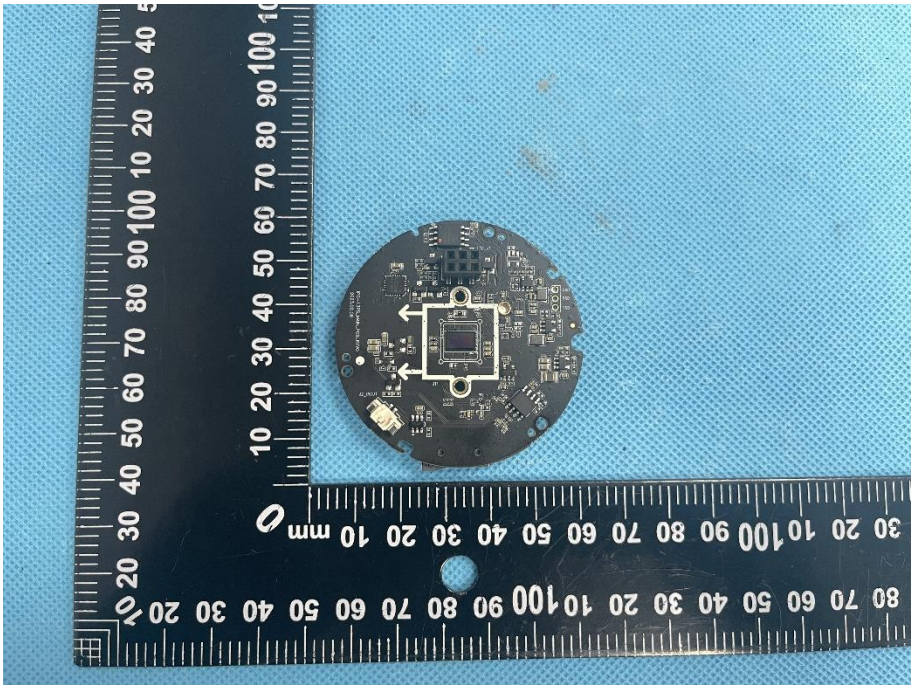
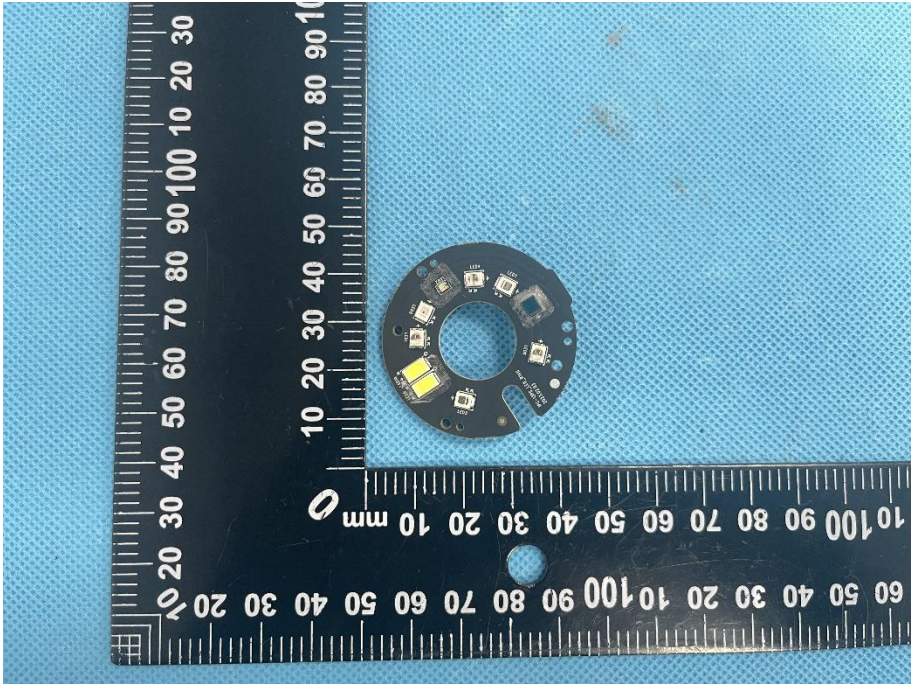
| | |
|---|---|
| <p>Solder Board-Component View 1</p> |  A photograph of a small, irregularly shaped solder board component. The component is dark in color and has several small, light-colored components mounted on it. It is placed on a blue textured surface next to a black ruler with white markings. The ruler shows measurements in millimeters, with the component positioned between the 10 mm and 30 mm marks. |
| <p>Solder Board-Component View 2</p> |  A photograph of the same solder board component from a different perspective. The component is dark and has several small, light-colored components mounted on it. It is placed on a blue textured surface next to a black ruler with white markings. The ruler shows measurements in millimeters, with the component positioned between the 10 mm and 30 mm marks. |


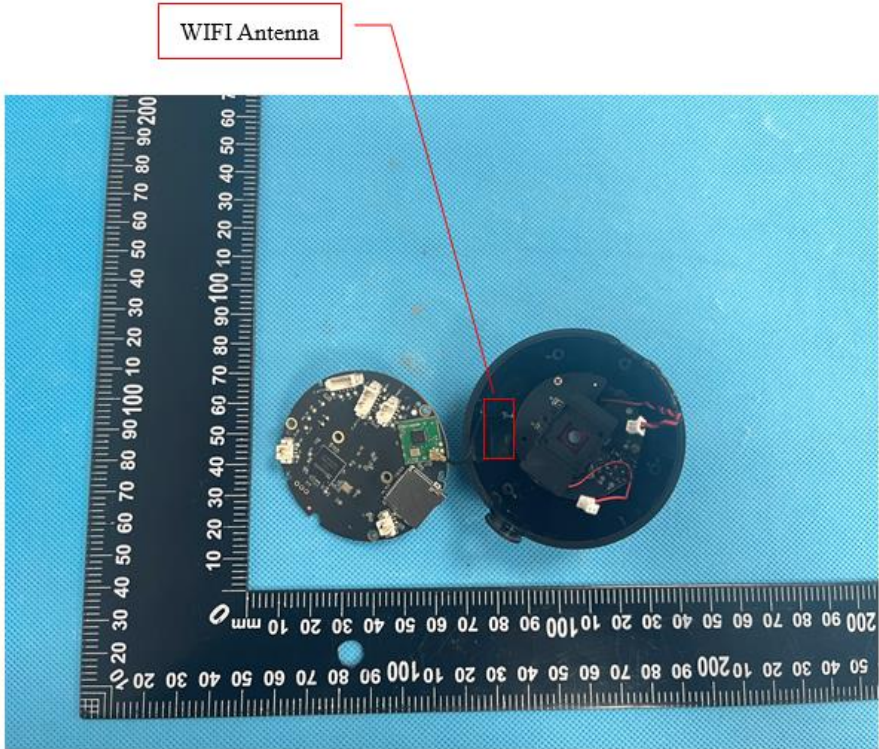
**Solder
Board-Component
View 3**



**Solder
Board-Component
View 4**



| | |
|---|---|
| <p>Solder Board-Component View 5</p> |  <p>A circular printed circuit board (PCB) component is shown against a blue textured background. The component is dark green with a central square area containing a white square. Two white arrows point to the corners of this central square. The board is surrounded by a black L-shaped ruler with white markings in millimeters. The ruler shows dimensions of approximately 100 mm by 100 mm.</p> |
| <p>Solder Board-Component View 6</p> |  <p>A circular printed circuit board (PCB) component is shown against a blue textured background. The component is dark green with a central circular hole and several small components mounted on it. The board is surrounded by a black L-shaped ruler with white markings in millimeters. The ruler shows dimensions of approximately 100 mm by 100 mm.</p> |

| | |
|---|---|
| <p>Solder Board-Component View 7</p> |  <p>A photograph showing a circular black PCB component with a central hole and several surface components. The component is placed on a blue textured surface next to a black L-shaped ruler with white markings in millimeters. The ruler indicates the component's size is approximately 40mm in diameter.</p> |
| <p>Antenna View</p> |  <p>A photograph showing two views of the circular PCB component. The left view shows the component's surface with various components. The right view shows the reverse side, where a red rectangular box highlights a specific area. A red line connects this box to a label "WIFI Antenna" in a white box with a red border. A black L-shaped ruler with white markings is visible in the background, indicating the component's size.</p> |