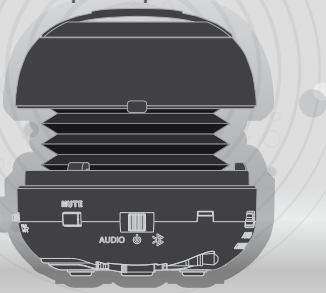




## X-mini™ KAI Capsule Speaker™



**Bluetooth™**  
THE ORIGINAL CAPSULE SPEAKER™

## Introduction

Congratulations on your purchase of an X-mini™ Capsule Speaker™ product. Xmi Pie Ltd presents the all new X-mini™ KAI Capsule Speaker™ which signifies Xmi Pie Ltd's foray into the next generation of portable audio products. The X-mini™ KAI Capsule Speaker™ can be used to stream high quality audio from any Bluetooth enabled devices such as notebook, tablets, and mobile phones. In addition, the Bluetooth hands-free function also allows users to engage in clear quality conversations with your friends and family. Be it for individual or group entertainment, the X-mini™ KAI Capsule Speaker™ is the perfect audio enhanced device for any Bluetooth enabled device of your choice.

### Safety Rules

- 1) Please follow the rules depicted in this manual closely to ensure your safety. Before using the speaker, we would strongly encourage you to read through this user manual.
- 2) Be more wary of any edges, uneven surfaces, metal parts, accessories and its packaging so as to prevent any possible injury or damage.
- 3) Keep this speaker out of reach of children. Take note that this speaker is not edible and should not be placed in your mouth.
- 4) Do not modify, repair or dismantle the speaker. Doing so may result in fire, electric shocks, complete breakdown of the speaker, etc. All of which, are not covered under warranty.
- 5) Do not use any diluents or volatile liquid to clean the speaker. Keep in mind that the surface of the speaker should only be wiped with a clean dry cloth.
- 6) Do not use this speaker in locations whereby there are high temperatures or high humidity levels (For instance, bathrooms). Ideally, the speaker should be used in a location free of dust and exposure to direct sunlight.
- 7) Do not insert foreign objects, such as pins, into this speaker.
- 8) Do not touch this speaker when your hands are wet as this may result in electric shocks.
- 9) Turn down the volume before while using this speaker as sudden loud sounds may damage it.
- 10) Refrain from dropping the speaker as well as any collision with other objects.
- 11) Do not use this speaker when in hazardous locations.
- 12) Should any abnormal situations or problems occur while using the speaker, discontinue use of speaker immediately.

X-mini™ KAI Capsule Speaker™

2

## FCC Statement for X-mini™ KAI Capsule Speaker™

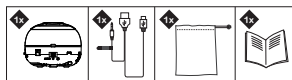
This device complies with Part 15 of the FCC Rules. Operation is subject to the following two conditions:  
 (1) This device may not cause harmful interference, and  
 (2) This device must accept any interference received, including interference that may cause undesired operation.

Changes or modifications not expressly approved by the party responsible for compliance could void the user's authority to operate the equipment.  
**NOTE:** This equipment has been tested and found to comply with the limits for a Class B digital device, pursuant to Part 15 of the FCC Rules. These limits are designed to provide reasonable protection against harmful interference in a residential installation. This equipment generates, uses and can radiate radio frequency energy and, if not installed and used in accordance with the instructions, may cause harmful interference to radio communications. However,

there is no guarantee that interference will not occur in a particular installation. If this equipment does cause harmful interference to radio or television reception, which can be determined by turning the equipment off and on, the user is encouraged to try to correct the interference by one or more of the following measures:  
 - Reorient or relocate the receiving antenna.  
 - Increase the separation between the equipment and receiver.  
 - Connect the equipment into an outlet on a circuit different from that to which the receiver is connected.  
 - Consult the dealer or an experienced radio/TV technician for help.

**RF Exposure Statement**  
 FCC RF warning statement: The device has been evaluated to meet general RF exposure requirement. The device can be used in portable exposure condition without restriction.

## Package Contents



X-mini™ KAI Capsule Speaker™

3

## Charging and playing

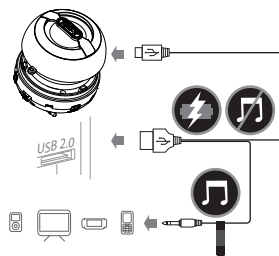
### LED Battery Indicator

When charging:  
 Red – X-mini™ KAI Capsule Speaker™ is charging  
 Blue – X-mini™ KAI Capsule Speaker™ is fully charged

### When in use:

Blue – X-mini™ KAI Capsule Speaker™ is turned on  
 Blue (dim) – X-mini™ KAI Capsule Speaker™ battery low

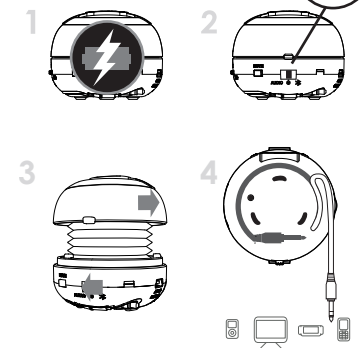
During playback through bluetooth, users will be alerted if charging is required by a three-beep indication.



X-mini™ KAI Capsule Speaker™

4

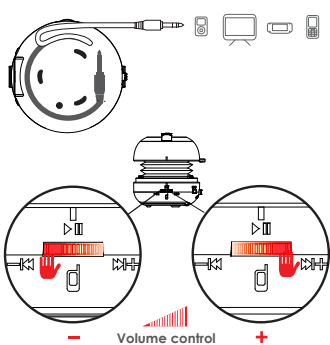
## Mode Of Usage (External Audio Mode)



X-mini™ KAI Capsule Speaker™

5

## Mode Of Usage (External Audio Mode)

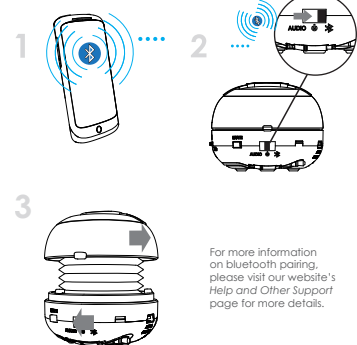


Volume control

X-mini™ KAI Capsule Speaker™

6

## Mode Of Usage (Bluetooth pairing)

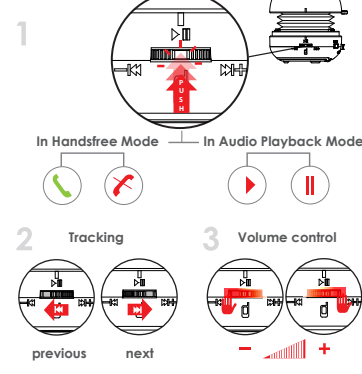


For more information on bluetooth pairing, please visit our website's [Help and Other Support](#) page for more details.

X-mini™ KAI Capsule Speaker™

7

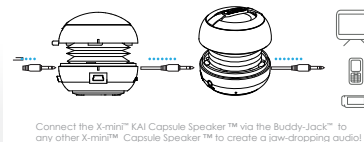
## Mode Of Usage (Bluetooth Mode)



X-mini™ KAI Capsule Speaker™

8

## BuddyJack™



Connect the X-mini™ KAI Capsule Speaker™ via the Buddy-Jack™ to any other X-mini™ Capsule Speaker™ to create a jaw-dropping audio!

## Technical Specification

Speaker Specifications	
Dimensions	: 62mm X 50.0mm (closed resonator)
Weight	: 95.2g
Speaker	: Magnetically Shielded 40mm (4G)
Loudspeaker Output	: 2.5W
Frequency Response	: 100 Hz – 18 kHz
Signal-to-Noise Ratio	: 28dB
Distortion	: <math>0.3\%</math>
Playback Time	: Up to 8 hours
Battery Capacity	: 550mAh
Battery Voltage	: 5V
Battery Charge Time	: minimum 3 hours

X-mini™ KAI Capsule Speaker™ Specifications	
Operating Frequency Range	: 2.402GHz – 2.483GHz
Wireless Range	: Up to 10 metres/33 feet
Bluetooth Compliant	: v2.1 + EDR
Bluetooth Profile support	: A2DP, Stereo, AVRCP v1.0, HFP v1.5
Bluetooth Playback time	: Up to 4 hours
Talk time	: Up to 8 hours
Microphone Directivity	: Omnidirectional
Microphone Sensitivity	: -34dB

X-mini™ KAI Capsule Speaker™

9

## Warranty and Support

### Limited Warranty

- 1) If within 12 months of purchase this device or any part thereof is proven to be defective by reason of faulty workmanship or defects in materials, we will at our option repair or replace the same free of charge of labor or materials on condition that:
  - 1) The original invoice or sales receipt with the date of purchase, or stamp from the dealer is presented together with the defective unit.
  - 2) The warranty does not cover Product failures which have been caused by use of accessories other peripheral devices which are not X-mini™ branded original accessories intended for use with the Product.
  - 3) The warranty does not cover Product failures caused by Modification, repaired, and disassembled by any person who is not authorized by the manufacturer.

Any defective unit or part shall become property of the manufacturer. The warranty does not cover any damage caused by misuse, drop, fire or neglect.

**Product Registration**  
[www.x-mini.com/support/register](http://www.x-mini.com/support/register)

**Obtaining Warranty Service**  
[www.x-mini.com/support/rma](http://www.x-mini.com/support/rma)

**Multi-Language Product Manual**  
[www.x-mini.com/support/manuals](http://www.x-mini.com/support/manuals)

**Help and Other Support**  
[www.x-mini.com/support/faq](http://www.x-mini.com/support/faq)

**Visit us [www.x-mini.com](http://www.x-mini.com)  
 Facebook fanpage : [x-mini](https://www.facebook.com/x-mini)**

© 1998-2015 Xmi Pie Ltd. All rights reserved. We do not assume any responsibility for any errors that may appear in the Manual. Illustrations and/or text herein is subject to change without notice.

X-mini™ KAI Capsule Speaker™

8