

## Air Card User Manual

1. Plug WiFi-SD card into SD socket of Digital Still Camera.

將 WiFi-SD 插入數位相機的 SD 卡插槽中。

2. Turn on digital still camera power, two beeper sounds will come out in 5 seconds, it's an indicator of WiFi-SD card boots-up successfully.

開啓數位相機電源，5 秒後會出現 2 個嗶嗶聲，表示 WiFi 成功啓動。

3. To establish Peer to Peer( P2P ) WiFi connection between WiFi SD card and other WiFi devices such as PC, another DSC loaded with WiFi SD card or Smart phone, pls. take below actions:

建立 WiFi SD 卡與其他 WiFi 裝置如智慧型手機之點對點連結，操作如下：

a. Enter “viewing still images mode” of DSC.

進入數位相機的瀏覽模式

b. Seek below image with forward or backward control keypad of digital still camera.

找到以下圖片



c. Remove above image with DSC's “delete image” procedures.

按下刪除鍵

d. A series beeper sounds will come out after delete this specific image picture.

出現一連串嗶嗶聲

e. WiFi function of WiFi SD card is turned on after beeper sounds stop.

嗶嗶聲停止後，表示 SD 卡 WiFi 功能已開啓

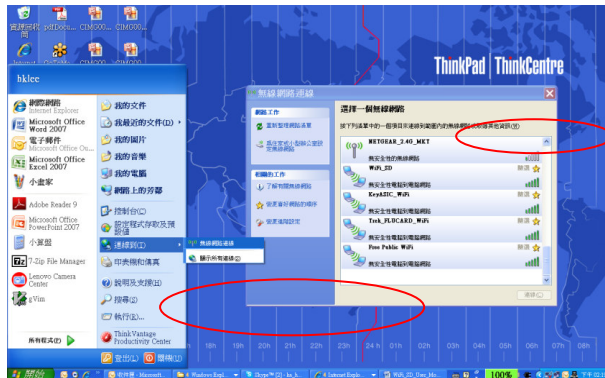
3-1 The WiFi SD card now is ready to connect with other WiFi devices at “Peer-to-Peer” mode for data exchange with following operation methods”:

### 3-1-1 Connect to PC with WiFi connectivity -

Click "Start" -> "Connect to" -> "WiFi connectivity" -> "Select a WiFi Network"

連結到 PC Wifi 功能 → 點選「開始」→ 「連線到」→ 「無線網路連線」

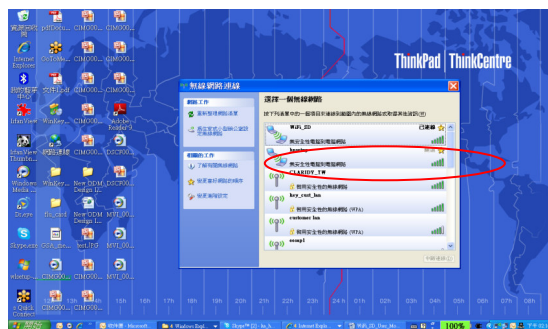
→ 「選擇一個無線網路」



Double click "WiFi\_SD" ID within WiFi Network Selection Menu and wait

PC to show "connected" mark

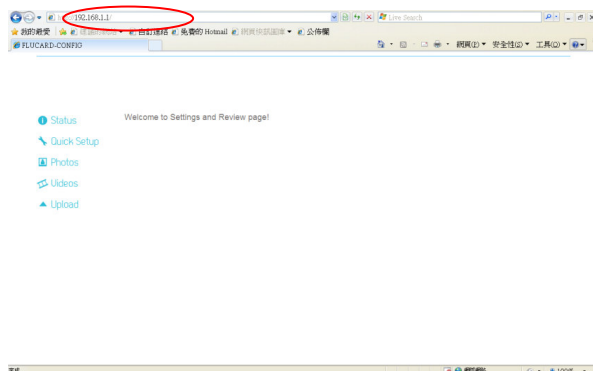
點選「WiFi SD」的名稱，待 PC 顯示「已連線」



Open IE on PC and key-in web address of <http://192.168.1.1> to view/download/upload image or video files to and from DSC to PC

開啓 IE，輸入 <http://192.168.1.1>，即可進行瀏覽/下載/上傳數位相機的檔

案



4. To upload image or video files to remote server via Access Point( AP ), pls. take below actions:

要上傳檔案到另一台智慧型手機或平板電腦，請執行以下步驟:

a. Enter “Client mode” of DSC.

進入數位相機的 client mode.



b. Remove above image with DSC's “delete image” procedures.

刪除這張圖片，以開啓功能

c. A series beeper sounds will come out after delete this specific image picture.

之後會出現一連串嗶嗶聲

d. WiFi function of WiFi SD card is turned on after beeper sounds stop.

WiFi 功能於嗶聲停止後開啓

e DSC will start uploading all image files stored in WiFi SD card to remote server, the image file which has existed in server will NOT be transmitted again.

數位相機開始上傳檔案到另一端接收裝置.

## FCC Compliance and Advisory Statement

This device complies with Part 15 of the FCC rules. Operation is subject to the following two conditions: (1) this device may not cause harmful interference, and (2) this device must accept any interference received, including interference that may cause undesired operation. This equipment has been tested and found to comply with the limits for a Class B digital device, according to Part 15 of the FCC rules. These limits are designed to provide reasonable protection against harmful interference in a residential installation. This equipment generates, uses and can radiate radio frequency energy and if not installed and used in accordance with the instructions, may cause harmful interference to radio communications. However, there is no guarantee that interference will not occur in a particular installation. If this equipment does cause harmful interference to radio or television reception, which can be determined by turning the equipment off and on, the user is encouraged to try to correct the interference by one or more of the following measures:

1. Reorient the receiving antenna.
2. Increase the separation between the equipment and receiver.
3. Connect the equipment into an outlet on a circuit different from that to which the receiver is connected.
4. Consult the dealer or an experienced radio/TV technician for help. Any special accessories needed for compliance must be specified in the instruction manual.

**WARNING:** A shielded-type power cord is required in order to meet FCC emission limits and also to prevent interference to the nearby radio and television reception. It is essential that only the supplied power cord be used. Use only shielded cables to connect I/O devices to this equipment.

**CAUTION:** Any changes or modifications not expressly approved by the party responsible for compliance could void your authority to operate the equipment.

For product available in the USA/Canada market, only channel 1~11 can be operated. Selection of other channels is not possible.

This device and its antenna(s) must not be co-located or operation in conjunction with any other antenna or transmitter

## **NCC/DGT 警語**

### 第十二條

型式認證合格之低功率射頻電機，非經許可，公司、商號或使用者均不得擅自變更頻率、加大功率或變更原設計之特性及功能。

### 第十四條

低功率射頻電機之使用不得影響飛航安全及干擾合法通信；經發現有干擾現象時，應立即停用，並改善至無干擾時方得繼續使用。

前項合法通信，指依電信法規定作業之無線電通信。

低功率射頻電機須忍受合法通信或工業、科學及醫療用電波輻射性電機設備之干擾。