

# Validation band: CW, FRONT

## Exposure Conditions

Band	Validation band	Phantom Section	5G
Frequency [MHz]   Channel Number	10000.0   10000	Conversion Factor	1.0
Group   UID	CW, 0--	Position   Test Distance [mm]	FRONT   10.00

## Hardware Setup

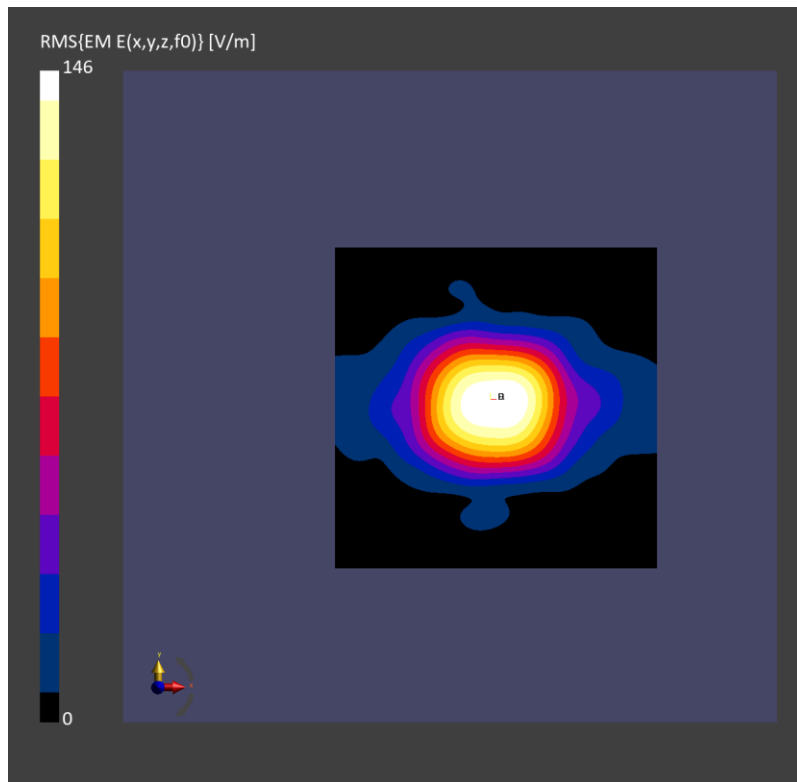
Probe   Calibration Date	EUmmWV4 - SN9589_F1-55GHz   2023-09-05	Phantom	mmWave   xxxx
DAE   Calibration Date	DAE4 Sn1257   2023-09-12	Medium	Air   -
Software Version	3.2.2.2358		

## Scan Setup

Scan Type	5G Scan	Grid Extents [mm]	120.0 x 120.0
Grid Steps [lambda]	0.25 x 0.25	Sensor Surface [mm]	10.0

## Measurement Results

Avg. Area [cm <sup>2</sup> ]	4.00
psPDn+ [W/m <sup>2</sup> ]	51.5
psPDtot+ [W/m <sup>2</sup> ]	51.9
psPDmod+ [W/m <sup>2</sup> ]	52.2
E <sub>max</sub> [V/m]	146
H <sub>max</sub> [A/m]	0.398
Power Drift [dB]	-0.01



# Validation band: CW, FRONT

## Exposure Conditions

Band	Validation band	Phantom Section	5G
Frequency [MHz]   Channel Number	10000.0   10000	Conversion Factor	1.0
Group   UID	CW, 0--	Position   Test Distance [mm]	FRONT   10.00

## Hardware Setup

Probe   Calibration Date	EUmmWV4 - SN9589_F1-55GHz   2023-09-05	Phantom	mmWave   xxxx
DAE   Calibration Date	DAE4 Sn1257   2023-09-12	Medium	Air   -
Software Version	3.2.2.2358		

## Scan Setup

Scan Type	5G Scan	Grid Extents [mm]	120.0 x 120.0
Grid Steps [lambda]	0.25 x 0.25	Sensor Surface [mm]	10.0

## Measurement Results

Avg. Area [cm <sup>2</sup> ]	4.00
psPDn+ [W/m <sup>2</sup> ]	61.6
psPDtot+ [W/m <sup>2</sup> ]	62.0
psPDmod+ [W/m <sup>2</sup> ]	62.4
E <sub>max</sub> [V/m]	160
H <sub>max</sub> [A/m]	0.440
Power Drift [dB]	-0.02

