

# Custom Band: Pulse Waveform (200Hz, 80%), BACK

## Exposure Conditions

Band	Custom Band	TSL Permittivity	39.9
Frequency [MHz]   Channel Number	2000.100   2000100	TSL Conductivity [S/m]	1.40
Group   UID	CW   10662-AAB	Phantom Section   TSL	Flat   HSL
Conversion Factor	8.19	Test Distance [mm]	10.00

## Hardware Setup

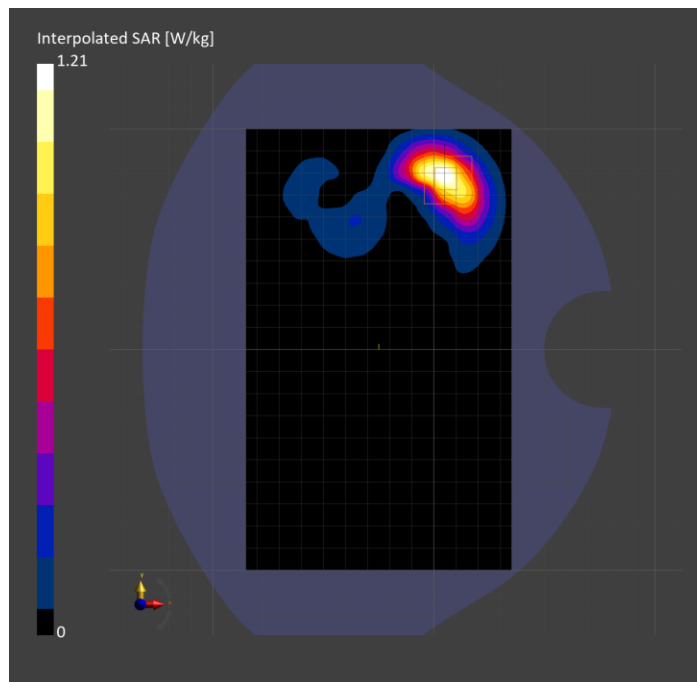
Probe   Calibration Date	EX3DV4 - SN3989   2024-01-09	Phantom	Twin-SAM V8.0 (30deg probe tilt)
DAE   Calibration Date	DAE4 Sn1433   2024-02-08	TSL Type	HBBL-600-10000
Software Version	16.2.4.2524		

## Scan Setup

	Area Scan	Zoom Scan
Grid Extents [mm]	120.0 x 200.0	30.0 x 30.0 x 30.0
Grid Steps [mm]	10.0 x 10.0	5.0 x 5.0 x 1.5
Sensor Surface [mm]	3.0	1.4
Graded Grid	N/A	Yes
M2/M1 [%]		83.2
Dist 3dB Peak [mm]		7.9
Peak SAR [W/kg]   SAR Peak Location [mm]	N/A	1.21   [5.0, 77.5, -207.0]

## Measurement Results

	Area Scan	Zoom Scan
psSAR1g [W/Kg]	0.657	<b>0.649</b>
psSAR10g [W/Kg]	0.323	<b>0.320</b>
Power Drift [dB]	N/A	-0.06



# WLAN 2.4GHz: IEEE 802.11b WiFi 2.4 GHz (DSSS, 1 Mbps, 99pc duty cycle), CHEEK

## Exposure Conditions

Band	WLAN 2.4GHz	TSL Permittivity	39.8
Frequency [MHz]   Channel Number	2462.000   11	TSL Conductivity [S/m]	1.80
Group   UID	WLAN   10415-AAA	Phantom Section   TSL	RightHead   HSL
Conversion Factor	7.32	Test Distance [mm]	0.00

## Hardware Setup

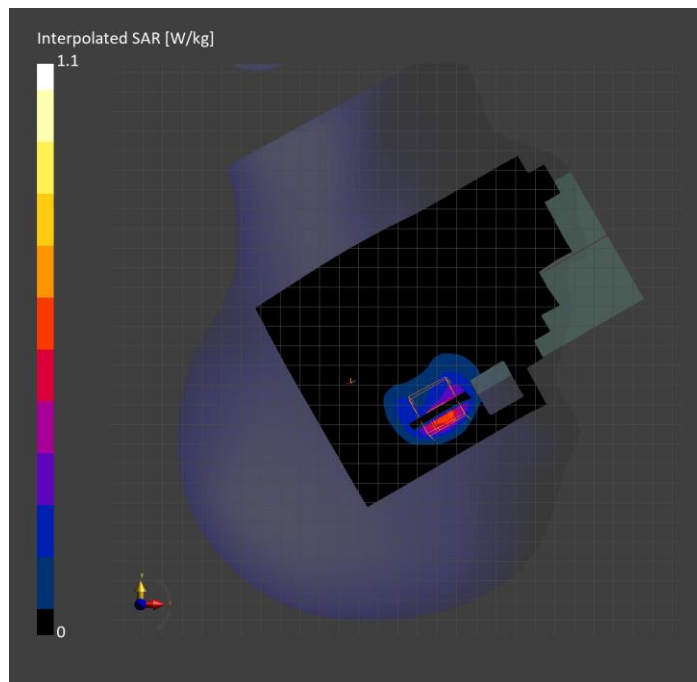
Probe   Calibration Date	EX3DV4 - SN7585   2024-04-16	Phantom	Twin-SAM V8.0 (30deg probe tilt)
DAE   Calibration Date	DAE4 Sn1258   2024-03-12	TSL Type	HBBL-600-10000
Software Version	16.2.4.2524		

## Scan Setup

	Area Scan	Zoom Scan
Grid Extents [mm]	120.0 x 200.0	30.0 x 30.0 x 30.0
Grid Steps [mm]	10.0 x 10.0	4.2 x 4.2 x 1.5
Sensor Surface [mm]	3.0	1.4
Graded Grid	N/A	Yes
M2/M1 [%]		77.2
Dist 3dB Peak [mm]		6.0
Peak SAR [W/kg]   SAR Peak Location [mm]	N/A	1.10   [52.1, -327.2, -174.0]

## Measurement Results

	Area Scan	Zoom Scan
psSAR1g [W/Kg]	0.434	<b>0.441</b>
psSAR10g [W/Kg]	0.187	<b>0.178</b>
Power Drift [dB]	-0.01	-0.02



# U-NII-1, U-NII-2A: IEEE 802.11n (HT Greenfield, 13.5 Mbps, BPSK), CHEEK

## Exposure Conditions

Band	U-NII-1, U-NII-2A	TSL Permittivity	37.4
Frequency [MHz]   Channel Number	5270.000   54	TSL Conductivity [S/m]	4.81
Group   UID	WLAN   10114-CAE	Phantom Section   TSL	RightHead   HSL
Conversion Factor	5.19	Test Distance [mm]	0.00

## Hardware Setup

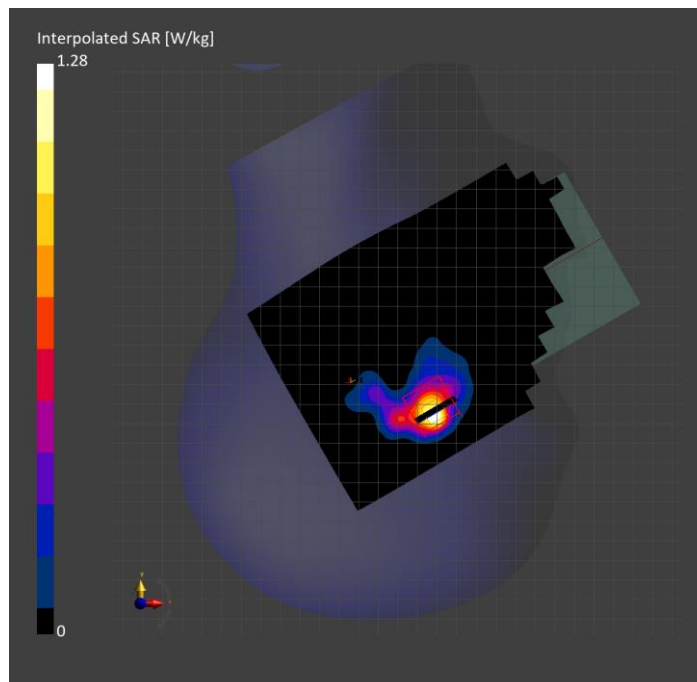
Probe   Calibration Date	EX3DV4 - SN7585   2024-04-16	Phantom	Twin-SAM V8.0 (30deg probe tilt)
DAE   Calibration Date	DAE4 Sn1258   2024-03-12	TSL Type	HBBL-600-10000
Software Version	16.2.4.2524		

## Scan Setup

	Area Scan	Zoom Scan
Grid Extents [mm]	120.0 x 200.0	22.0 x 22.0 x 22.0
Grid Steps [mm]	10.0 x 10.0	4.0 x 4.0 x 1.4
Sensor Surface [mm]	3.0	1.4
Graded Grid	N/A	Yes
M2/M1 [%]		60.0
Dist 3dB Peak [mm]		5.1
Peak SAR [W/kg]   SAR Peak Location [mm]	N/A	1.28   [50.5, -324.7, -174.6]

## Measurement Results

	Area Scan	Zoom Scan
psSAR1g [W/Kg]	0.291	<b>0.292</b>
psSAR10g [W/Kg]	0.099	<b>0.091</b>
Power Drift [dB]	N/A	0.01



# ISM 2.4 GHz Band: IEEE 802.15.1 Bluetooth (GFSK, DH5), BACK

## Exposure Conditions

Band	ISM 2.4 GHz Band	TSL Permittivity	39.7
Frequency [MHz]   Channel Number	2480.000   78	TSL Conductivity [S/m]	1.81
Group   UID	Bluetooth   10032-CAA	Phantom Section   TSL	Flat   HSL
Conversion Factor	7.32	Test Distance [mm]	10.00

## Hardware Setup

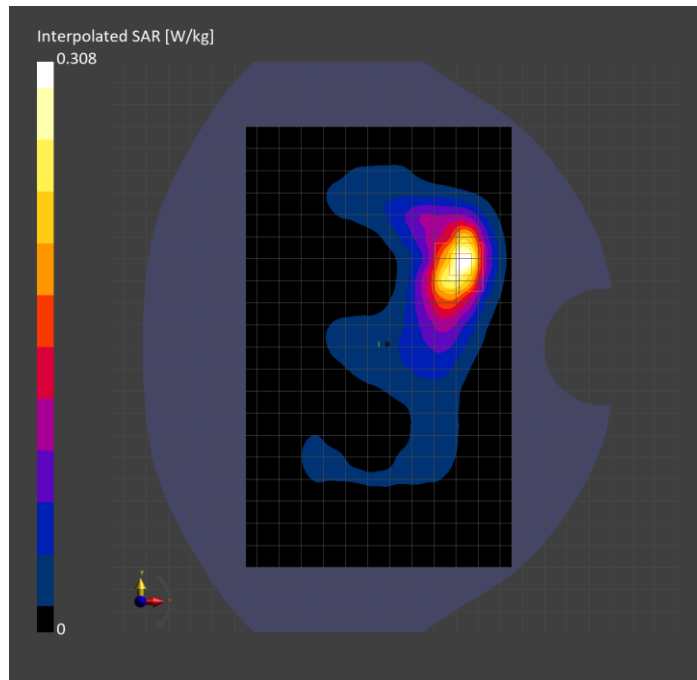
Probe   Calibration Date	EX3DV4 - SN7585   2024-04-16	Phantom	Twin-SAM V8.0 (30deg probe tilt)
DAE   Calibration Date	DAE4 Sn1258   2024-03-12	TSL Type	HBBL-600-10000
Software Version	16.2.4.2524		

## Scan Setup

	Area Scan	Zoom Scan
Grid Extents [mm]	120.0 x 200.0	30.0 x 30.0 x 30.0
Grid Steps [mm]	10.0 x 10.0	5.0 x 5.0 x 1.5
Sensor Surface [mm]	3.0	1.4
Graded Grid	N/A	Yes
M2/M1 [%]		78.9
Dist 3dB Peak [mm]		8.1
Peak SAR [W/kg]   SAR Peak Location [mm]	N/A	0.308   [11.5, 39.0, -207.0]

## Measurement Results

	Area Scan	Zoom Scan
psSAR1g [W/Kg]	0.133	<b>0.143</b>
psSAR10g [W/Kg]	0.065	<b>0.066</b>
Power Drift [dB]	N/A	-0.12



# Band 7: LTE-FDD (SC-FDMA, 1 RB, 20 MHz, QPSK) RBPosition:Mid AntennaCfg:SISO, BACK

## Exposure Conditions

Band	Band 7	TSL Permittivity	39.2
Frequency [MHz]   Channel Number	2510.000   20850	TSL Conductivity [S/m]	1.75
Group   UID	LTE-FDD   10169-CAF	Phantom Section   TSL	Flat   HSL
Conversion Factor	7.97	Test Distance [mm]	10.00

## Hardware Setup

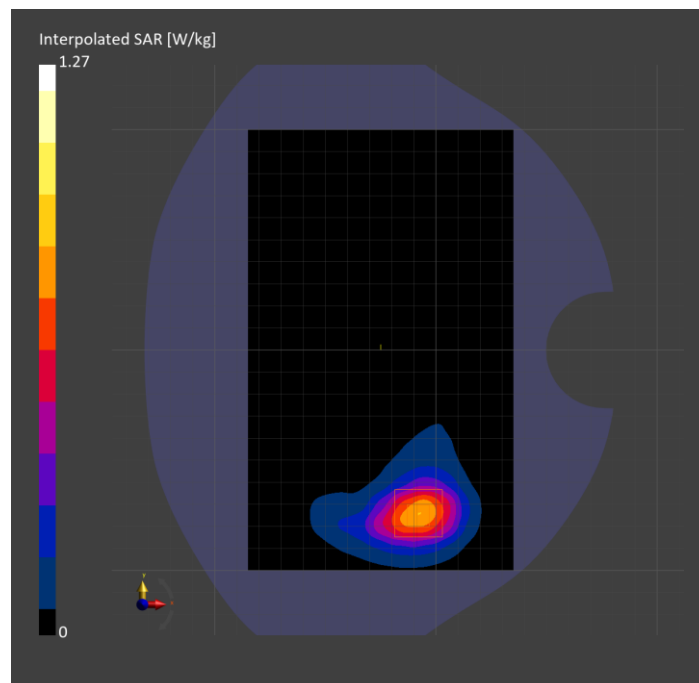
Probe   Calibration Date	EX3DV4 - SN3989   2024-01-09	Phantom	Twin-SAM V8.0 (30deg probe tilt)
DAE   Calibration Date	DAE4 Sn1433   2024-02-08	TSL Type	HBBL-600-10000
Software Version	16.2.4.2524		

## Scan Setup

	Area Scan	Zoom Scan
Grid Extents [mm]	120.0 x 200.0	30.0 x 30.0 x 30.0
Grid Steps [mm]	10.0 x 10.0	5.0 x 5.0 x 1.5
Sensor Surface [mm]	3.0	1.4
Graded Grid	N/A	Yes
M2/M1 [%]		84.0
Dist 3dB Peak [mm]		11.1
Peak SAR [W/kg]   SAR Peak Location [mm]	N/A	1.27   [-8.5, -75.0, -207.0]

## Measurement Results

	Area Scan	Zoom Scan
psSAR1g [W/Kg]	0.678	<b>0.703</b>
psSAR10g [W/Kg]	0.343	<b>0.357</b>
Power Drift [dB]	N/A	0.03



# Band n48: 5G NR (DFT-s-OFDM, 50% RB, 40 MHz, QPSK, 30 kHz) RBPosition:High AntennaCfg:SISO, BACK

## Exposure Conditions

Band	Band n48	TSL Permittivity	40.6
Frequency [MHz]   Channel Number	3643.315   642888	TSL Conductivity [S/m]	2.83
Group   UID	5G NR FR1 TDD   10913-AAD	Phantom Section   TSL	Flat   HSL
Conversion Factor	7.02	Test Distance [mm]	10.00

## Hardware Setup

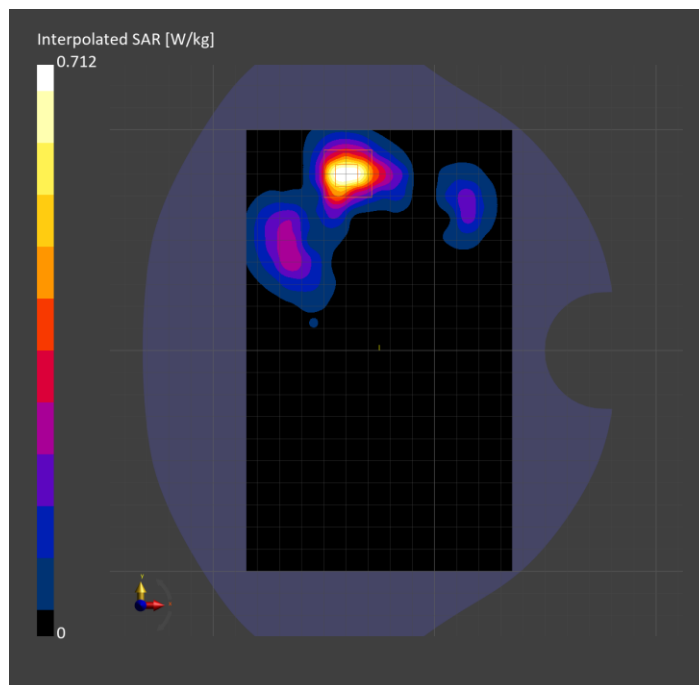
Probe   Calibration Date	EX3DV4 - SN3989   2024-01-09	Phantom	Twin-SAM V8.0 (30deg probe tilt)
DAE   Calibration Date	DAE4 Sn1433   2024-02-08	TSL Type	HBBL-600-10000
Software Version	16.2.4.2524		

## Scan Setup

	Area Scan	Zoom Scan
Grid Extents [mm]	120.0 x 200.0	28.0 x 28.0 x 28.0
Grid Steps [mm]	10.0 x 10.0	5.0 x 5.0 x 1.4
Sensor Surface [mm]	3.0	1.4
Graded Grid	N/A	Yes
M2/M1 [%]		79.2
Dist 3dB Peak [mm]		8.3
Peak SAR [W/kg]   SAR Peak Location [mm]	N/A	0.712   [-40.0, 79.0, -207.0]

## Measurement Results

	Area Scan	Zoom Scan
psSAR1g [W/Kg]	0.297	<b>0.304</b>
psSAR10g [W/Kg]	0.115	<b>0.117</b>
Power Drift [dB]	N/A	-0.03



# Custom Band: Pulse Waveform (200Hz, 80%), EDGE TOP

## Exposure Conditions

Band	Custom Band	TSL Permittivity	39.9
Frequency [MHz]   Channel Number	2000.100   2000100	TSL Conductivity [S/m]	1.40
Group   UID	CW   10662-AAB	Phantom Section   TSL	Flat   HSL
Conversion Factor	8.19	Test Distance [mm]	0.00

## Hardware Setup

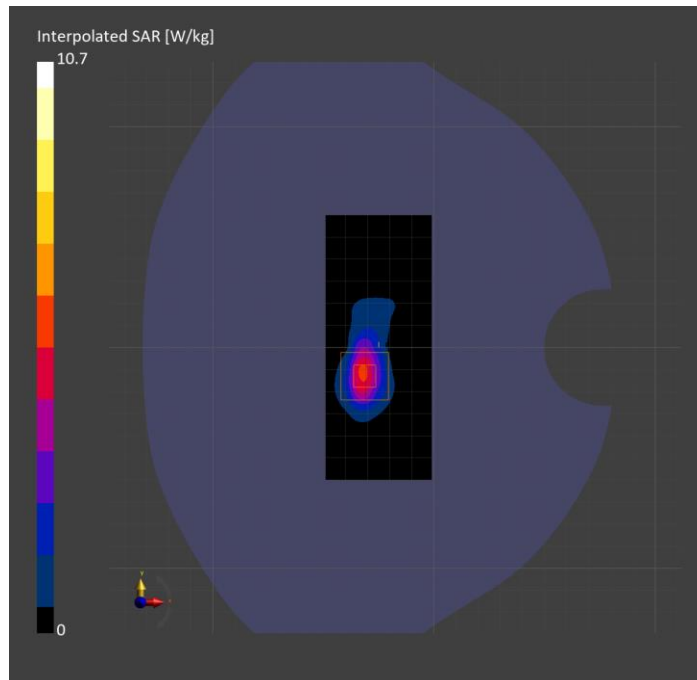
Probe   Calibration Date	EX3DV4 - SN3989   2024-01-09	Phantom	Twin-SAM V8.0 (30deg probe tilt)
DAE   Calibration Date	DAE4 Sn1433   2024-02-08	TSL Type	HBBL-600-10000
Software Version	16.2.4.2524		

## Scan Setup

	Area Scan	Zoom Scan
Grid Extents [mm]	48.0 x 120.0	30.0 x 30.0 x 30.0
Grid Steps [mm]	8.0 x 10.0	4.7 x 4.7 x 1.5
Sensor Surface [mm]	3.0	1.4
Graded Grid	N/A	Yes
M2/M1 [%]		73.9
Dist 3dB Peak [mm]		5.7
Peak SAR [W/kg]   SAR Peak Location [mm]	N/A	10.7   [-30.8, -12.4, -207.0]

## Measurement Results

	Area Scan	Zoom Scan
psSAR1g [W/Kg]	4.12	<b>4.09</b>
psSAR10g [W/Kg]	1.74	<b>1.60</b>
Power Drift [dB]	N/A	0.06



# U-NII-4: IEEE 802.11n (HT Greenfield, 13.5 Mbps, BPSK), EDGE LEFT

## Exposure Conditions

Band	U-NII-4	TSL Permittivity	36.2
Frequency [MHz]   Channel Number	5835.000   167	TSL Conductivity [S/m]	5.46
Group   UID	WLAN   10114-CAE	Phantom Section   TSL	Flat   HSL
Conversion Factor	4.71	Test Distance [mm]	0.00

## Hardware Setup

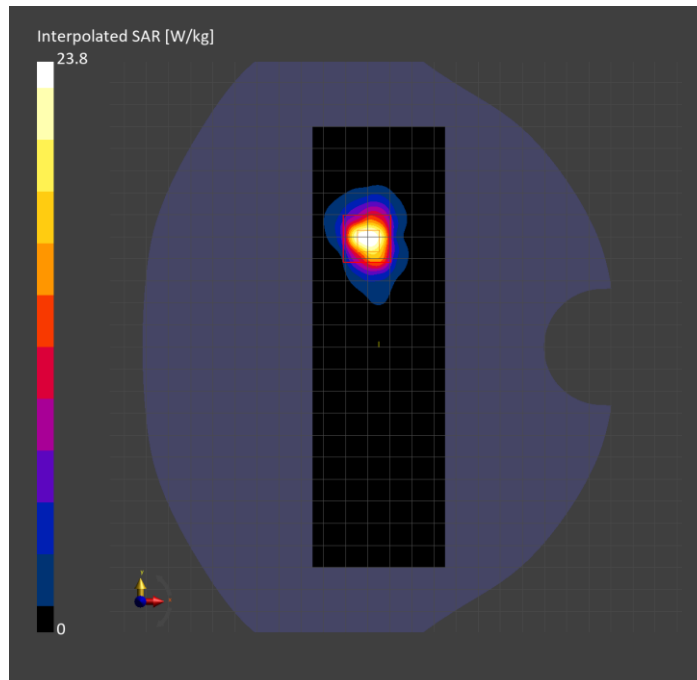
Probe   Calibration Date	EX3DV4 - SN7585   2024-04-16	Phantom	Twin-SAM V8.0 (30deg probe tilt)
DAE   Calibration Date	DAE4 Sn1258   2024-03-12	TSL Type	HBBL-600-10000
Software Version	16.2.4.2524		

## Scan Setup

	Area Scan	Zoom Scan
Grid Extents [mm]	60.0 x 200.0	22.0 x 22.0 x 22.0
Grid Steps [mm]	10.0 x 10.0	2.7 x 2.7 x 1.2
Sensor Surface [mm]	3.0	1.4
Graded Grid	N/A	Yes
M2/M1 [%]		61.8
Dist 3dB Peak [mm]		4.2
Peak SAR [W/kg]   SAR Peak Location [mm]	N/A	23.8   [-30.9, 48.8, -207.0]

## Measurement Results

	Area Scan	Zoom Scan
psSAR1g [W/Kg]	2.34	<b>4.02</b>
psSAR10g [W/Kg]	0.754	<b>0.917</b>
Power Drift [dB]	N/A	-0.03





# Band 30: LTE-FDD (SC-FDMA, 1 RB, 10 MHz, QPSK) RBPosition:High AntennaCfg:SISO, EDGE BOTTOM

## Exposure Conditions

Band	Band 30	TSL Permittivity	39.5
Frequency [MHz]   Channel Number	2310.000   27710	TSL Conductivity [S/m]	1.61
Group   UID	LTE-FDD   10175-CAH	Phantom Section   TSL	Flat   HSL
Conversion Factor	8.09	Test Distance [mm]	0.00

## Hardware Setup

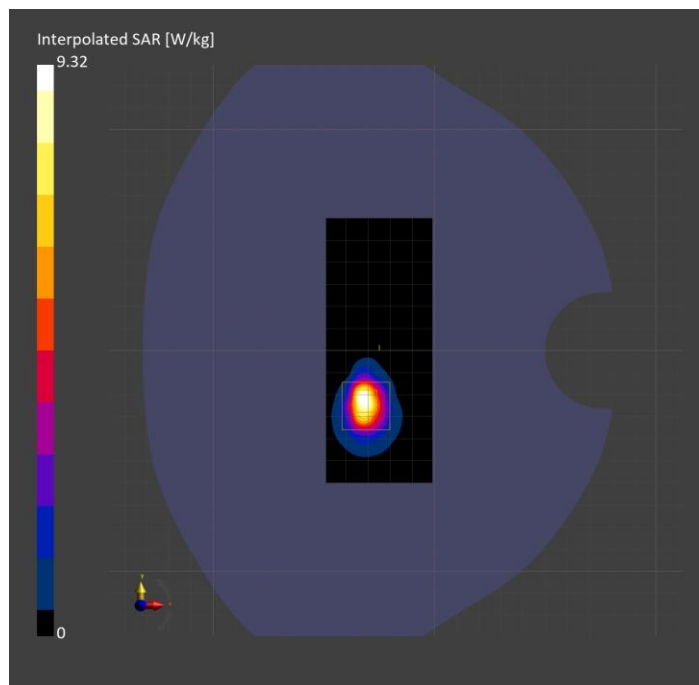
Probe   Calibration Date	EX3DV4 - SN3989   2024-01-09	Phantom	Twin-SAM V8.0 (30deg probe tilt)
DAE   Calibration Date	DAE4 Sn1433   2024-02-08	TSL Type	HBBL-600-10000
Software Version	16.2.4.2524		

## Scan Setup

	Area Scan	Zoom Scan
Grid Extents [mm]	48.0 x 120.0	30.0 x 30.0 x 30.0
Grid Steps [mm]	8.0 x 10.0	3.8 x 3.8 x 1.4
Sensor Surface [mm]	3.0	1.4
Graded Grid	N/A	Yes
M2/M1 [%]		73.5
Dist 3dB Peak [mm]		4.6
Peak SAR [W/kg]   SAR Peak Location [mm]	N/A	9.32   [-30.4, -22.3, -207.0]

## Measurement Results

	Area Scan	Zoom Scan
psSAR1g [W/Kg]	2.83	<b>2.98</b>
psSAR10g [W/Kg]	1.06	<b>0.992</b>
Power Drift [dB]	N/A	-0.05



# Custom Band: CW, BACK

## Exposure Conditions

Band	Custom Band	TSL Permittivity	54.2
Frequency [MHz]   Channel Number	13.600   13600	TSL Conductivity [S/m]	0.716
Group   UID	CW   0--	Phantom Section   TSL	Flat   HSL
Conversion Factor	18.85	Test Distance [mm]	0.00

## Hardware Setup

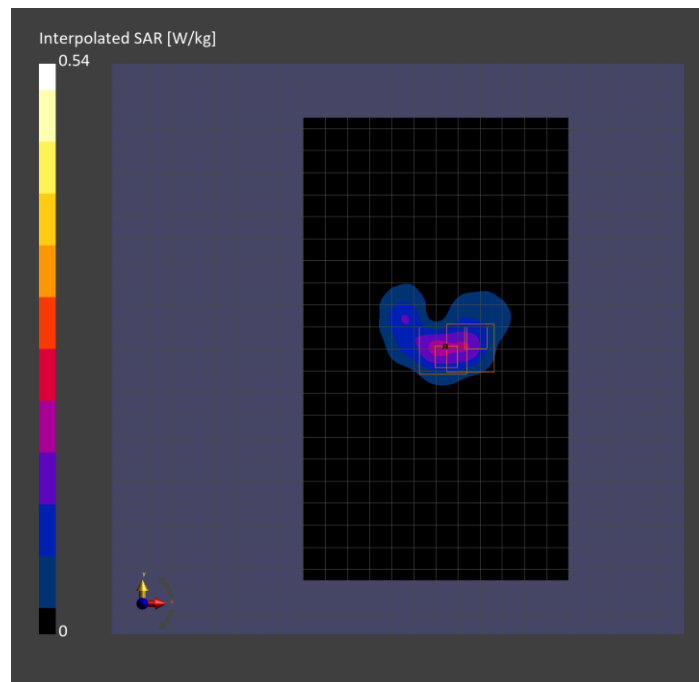
Probe   Calibration Date	EX3DV4 - SN3989   2024-01-09	Phantom	ELI V8.0 (20deg probe tilt)
DAE   Calibration Date	DAE4 Sn1258   2024-03-12	TSL Type	HBBL4-250V3
Software Version	16.2.4.2524		

## Scan Setup

	Area Scan	Zoom Scan	Secondary Zoom Scan
Grid Extents [mm]	120.0 x 210.0	30.0 x 30.0 x 30.0	30.0 x 30.0 x 30.0
Grid Steps [mm]	15.0 x 15.0	6.0 x 6.0 x 1.5	5.9 x 5.9 x 1.5
Sensor Surface [mm]	3.0	1.4	1.4
Graded Grid	N/A	Yes	Yes
M2/M1 [%]		60.2	63.9
Dist 3dB Peak [mm]		2.7	6.9
Peak SAR [W/kg]   SAR Peak Location [mm]	N/A	0.495   [16.7, -1.0, -177.0]	0.540   [-2.1, -1.3, -177.0]

## Measurement Results

	Area Scan	Zoom Scan	Secondary Zoom Scan
psSAR1g [W/Kg]	0.174	<b>0.134</b>	<b>0.178</b>
psSAR10g [W/Kg]	0.123	<b>0.043</b>	<b>0.080</b>
Power Drift [dB]	N/A	N/A	-0.01



# U-NII-5: IEEE 802.11ax (160MHz, MCS0, 99pc duty cycle), CHEEK

## Exposure Conditions

Band	U-NII-5	TSL Permittivity	36.0
Frequency [MHz]   Channel Number	6025.000   15	TSL Conductivity [S/m]	5.69
Group   UID	WLAN   10755-AAC	Phantom Section   TSL	RightHead   HSL
Conversion Factor	4.73	Test Distance [mm]	0.00

## Hardware Setup

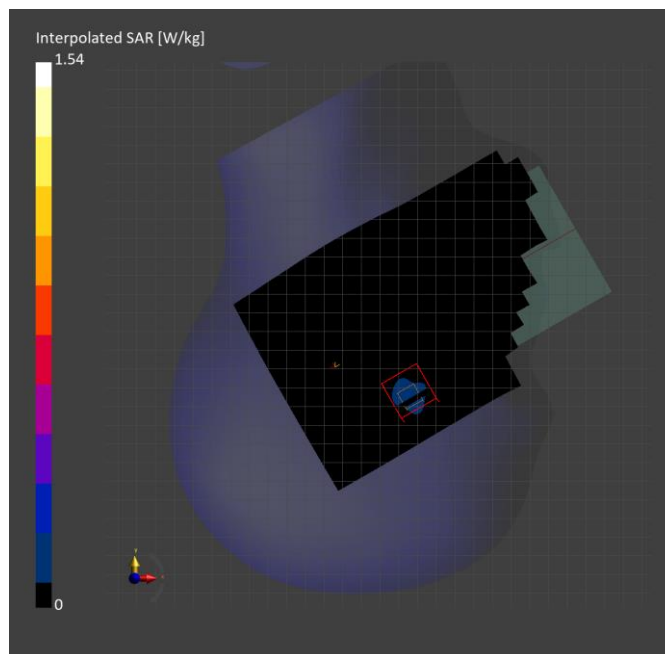
Probe   Calibration Date	EX3DV4 - SN7585   2024-04-16	Phantom	Twin-SAM V8.0 (30deg probe tilt)
DAE   Calibration Date	DAE4 Sn1258   2024-03-12	TSL Type	HBBL-600-10000
Software Version	16.2.4.2524		

## Scan Setup

	Area Scan	Zoom Scan
Grid Extents [mm]	119.0 x 204.0	22.0 x 22.0 x 22.0
Grid Steps [mm]	8.5 x 8.5	3.4 x 3.4 x 1.4
Sensor Surface [mm]	3.0	1.4
Graded Grid	N/A	Yes
M2/M1 [%]		54.6
Dist 3dB Peak [mm]		5.5
Peak SAR [W/kg]   SAR Peak Location [mm]	N/A	<b>0.924   [49.0, -328.0, -174.3]</b>

## Measurement Results

	Area Scan	Zoom Scan	APD
psSAR1g [W/Kg]	0.153	<b>0.194</b>	N/A
psSAR8g [W/Kg]	0.059	<b>0.069</b>	N/A
psSAR10g [W/Kg]	0.052	<b>0.055</b>	N/A
psAPD (4.0cm <sup>2</sup> , sq.) [W/m <sup>2</sup> ]	N/A	N/A	<b>1.38</b>
Power Drift [dB]	N/A	0.14	0.14



# U-NII-8: IEEE 802.11ax (160MHz, MCS0, 99pc duty cycle), EDGE LEFT

## Exposure Conditions

Band	U-NII-8	TSL Permittivity	34.3
Frequency [MHz]   Channel Number	6985.000   207	TSL Conductivity [S/m]	6.80
Group   UID	WLAN   10755-AAC	Phantom Section   TSL	Flat   HSL
Conversion Factor	4.73	Test Distance [mm]	0.00

## Hardware Setup

Probe   Calibration Date	EX3DV4 - SN7585   2024-04-16	Phantom	Twin-SAM V8.0 (30deg probe tilt)
DAE   Calibration Date	DAE4 Sn1258   2024-03-12	TSL Type	HBBL-600-10000
Software Version	16.2.4.2524		

## Scan Setup

	Area Scan	Zoom Scan
Grid Extents [mm]	48.0 x 204.0	22.0 x 22.0 x 22.0
Grid Steps [mm]	8.0 x 8.5	2.6 x 2.6 x 1.2
Sensor Surface [mm]	3.0	1.4
Graded Grid	N/A	Yes
M2/M1 [%]		50.6
Dist 3dB Peak [mm]		4.2
Peak SAR [W/kg]   SAR Peak Location [mm]	N/A	9.89   [-32.1, 48.5, -207.0]

## Measurement Results

	Area Scan	Zoom Scan	APD
psSAR1g [W/Kg]	1.27	<b>1.38</b>	N/A
psSAR8g [W/Kg]	0.384	<b>0.389</b>	N/A
psSAR10g [W/Kg]	0.330	<b>0.333</b>	N/A
psAPD (4.0cm <sup>2</sup> , sq.) [W/m <sup>2</sup> ]	N/A	N/A	<b>7.78</b>
Power Drift [dB]	N/A	-0.12	-0.12

