

U-NII-5: IEEE 802.11ax (160MHz, MCS0, 99pc duty cycle), FRONT

Exposure Conditions

Band	U-NII-5	Phantom Section	5G
Frequency [MHz] Channel Number	6025.0 15	Conversion Factor	1.0
Group UID	WLAN, 10755-AAC	Position Test Distance [mm]	FRONT 2.00

Hardware Setup

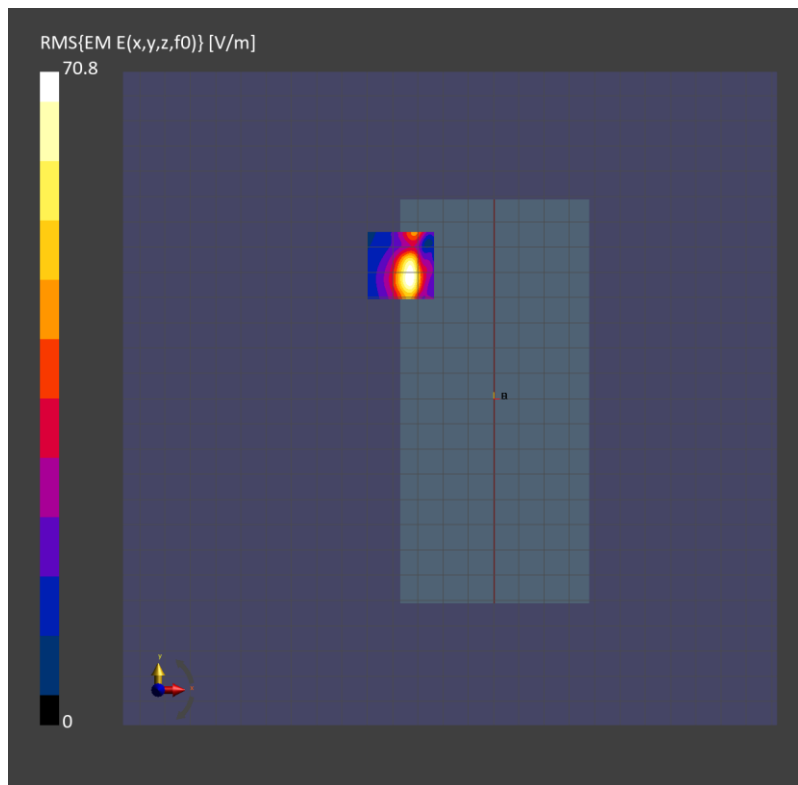
Probe Calibration Date	EUmmWV4 - SN9589_F1-55GHz 2023-09-05	Phantom	mmWave xxxx
DAE Calibration Date	DAE4 Sn1257 2023-09-12	Medium	Air -
Software Version	3.2.2.2358		

Scan Setup

Scan Type	5G Scan	Grid Extents [mm]	25.0 x 25.0
Grid Steps [lambda]	0.04102331270196222 x 0.04102331270196222	Sensor Surface [mm]	2.0

Measurement Results

Avg. Area [cm ²]	4.00
psPDn+ [W/m ²]	1.78
psPDtot+ [W/m ²]	4.12
psPDmod+ [W/m ²]	5.66
E _{max} [V/m]	70.7
Power Drift [dB]	-0.13



U-NII-8: IEEE 802.11ax (160MHz, MCS0, 99pc duty cycle), EDGE LEFT

Exposure Conditions

Band	U-NII-8	Phantom Section	5G
Frequency [MHz] Channel Number	6985.0 207	Conversion Factor	1.0
Group UID	WLAN, 10755-AAC	Position Test Distance [mm]	EDGE LEFT 2.00

Hardware Setup

Probe Calibration Date	EUmmWV4 - SN9589_F1-55GHz 2023-09-05	Phantom	mmWave xxxx
DAE Calibration Date	DAE4 Sn1257 2023-09-12	Medium	Air -
Software Version	3.2.2.2358		

Scan Setup

Scan Type	5G Scan	Grid Extents [mm]	25.0 x 25.0
Grid Steps [lambda]	0.047559807339951216 x 0.047559807339951216	Sensor Surface [mm]	2.0

Measurement Results

Avg. Area [cm ²]	4.00
psPDn+ [W/m ²]	2.38
psPDtot+ [W/m ²]	5.84
psPDmod+ [W/m ²]	9.18
E _{max} [V/m]	138
Power Drift [dB]	-0.12

