

#31_WLAN5GHz_802.11n-HT40 MCS0_Right Cheek_0mm_Ch46

Communication System: IEEE 802.11n; Frequency: 5230.000 MHz

Medium: HSL_5G_240314 Medium parameters used: $f = 5230.000$ MHz; $\sigma = 4.58$ S/m; $\epsilon_r = 35.5$

Ambient Temperature: 23.5°C; Liquid Temperature: 22.5°C

DASY6 Configuration:

- Probe: EX3DV4 - SN7694; ConvF(5.26, 5.26, 5.26); Calibrated: 2023-10-26
- Sensor-Surface: 1.4 mm
- Electronics: DAE4ip Sn1800; Calibrated: 2023-05-31
- Phantom: Twin-SAM V8.0 (30deg probe tilt); Serial: 2144; Section: RightHead
- Measurement Software: 16.2.4.2524
- UID: WLAN, 10599-AAD

Area Scan (120.0 mm x 200.0 mm): Measurement Grid: 10.0 mm x 10.0 mm

SAR (1g) = 0.634 W/kg; SAR (10g) = 0.234 W/kg;

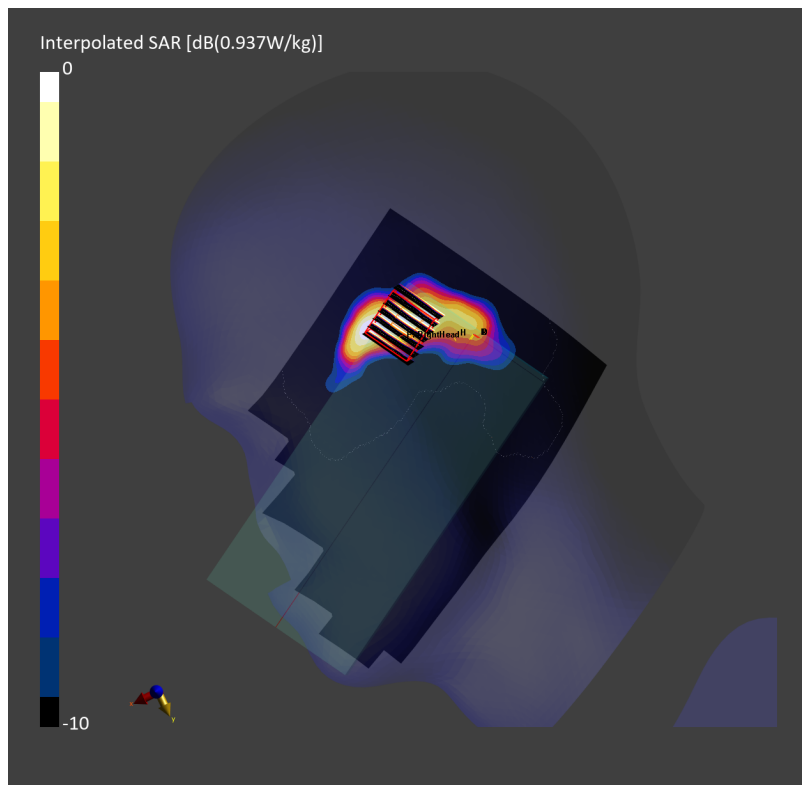
Zoom Scan (22.0 mm x 22.0 mm x 22.0 mm): Measurement Grid: 4.0 mm x 4.0 mm x 1.4 mm

Power Drift = -0.00 dB

SAR (1g) = 0.721 W/kg; SAR (8g) = 0.253 W/kg; SAR (10g) = 0.221 W/kg

Smallest distance from peaks to all points 3 dB below = 4.1 mm

Ratio of SAR at M2 to SAR at M1 = 67.8 %



#32_WLAN5GHz_802.11ac-VHT80 MCS0_Right Cheek_0mm_Ch122

Communication System: IEEE 802.11ac WiFi; Frequency: 5610.000 MHz

Medium: HSL_5G_240314 Medium parameters used: $f = 5610.000$ MHz; $\sigma = 5.00$ S/m; $\epsilon_r = 34.8$

Ambient Temperature: 23.5°C; Liquid Temperature: 22.5°C

DASY6 Configuration:

- Probe: EX3DV4 - SN7694; ConvF(4.6, 4.6, 4.6); Calibrated: 2023-10-26

- Sensor-Surface: 1.4 mm

- Electronics: DAE4ip Sn1800; Calibrated: 2023-05-31

- Phantom: Twin-SAM V8.0 (30deg probe tilt); Serial: 2144; Section: RightHead

- Measurement Software: 16.2.4.2524

- UID: WLAN, 10544-AAD

Area Scan (120.0 mm x 200.0 mm): Measurement Grid: 10.0 mm x 10.0 mm

SAR (1g) = 0.567 W/kg; SAR (10g) = 0.203 W/kg;

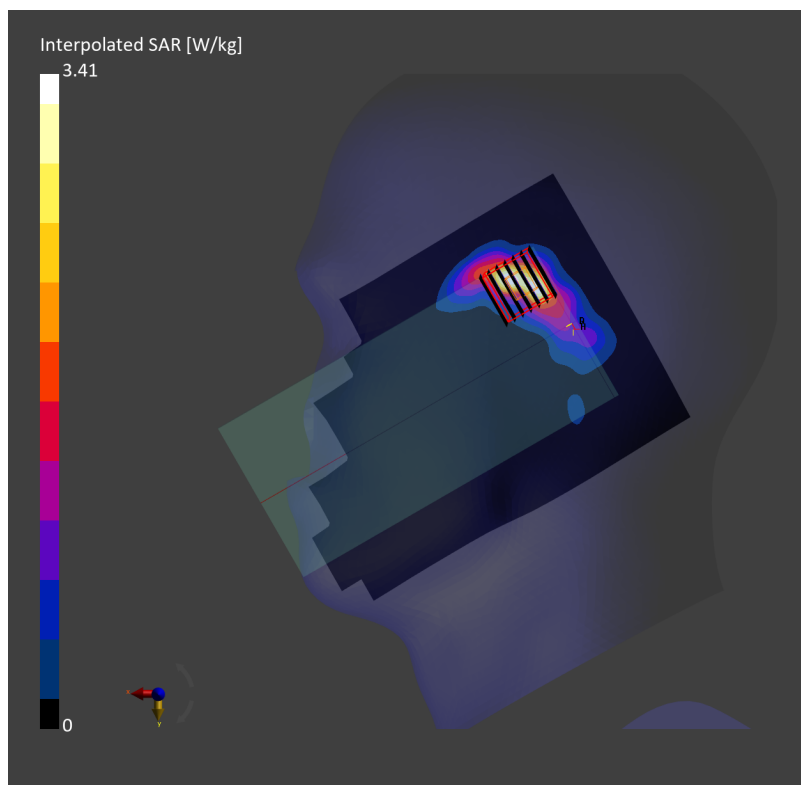
Zoom Scan (22.0 mm x 22.0 mm x 22.0 mm): Measurement Grid: 4.0 mm x 4.0 mm x 1.4 mm

Power Drift = 0.02 dB

SAR (1g) = 0.776 W/kg; SAR (8g) = 0.224 W/kg; SAR (10g) = 0.190 W/kg

Smallest distance from peaks to all points 3 dB below = 3.6 mm

Ratio of SAR at M2 to SAR at M1 = 64.4 %



#33_WLAN5GHz_802.11n-HT40 MCS0_Right Cheek_0mm_Ch159

Communication System: IEEE 802.11n; Frequency: 5795.000 MHz

Medium: HSL_5G_240316 Medium parameters used: $f = 5795.000$ MHz; $\sigma = 5.15$ S/m; $\epsilon_r = 35.3$

Ambient Temperature: 23.5°C; Liquid Temperature: 22.5°C

DASY6 Configuration:

- Probe: EX3DV4 - SN7793; ConvF(4.37, 4.42, 4.46); Calibrated: 2024-03-01
- Sensor-Surface: 1.4 mm
- Electronics: DAE4 Sn1707; Calibrated: 2023-12-06
- Phantom: Twin-SAM V8.0 (30deg probe tilt); Serial: 2127; Section: RightHead
- Measurement Software: 16.2.4.2524
- UID: WLAN, 10599-AAD

Area Scan (120.0 mm x 200.0 mm): Measurement Grid: 10.0 mm x 10.0 mm

SAR (1g) = 0.759 W/kg; SAR (10g) = 0.260 W/kg;

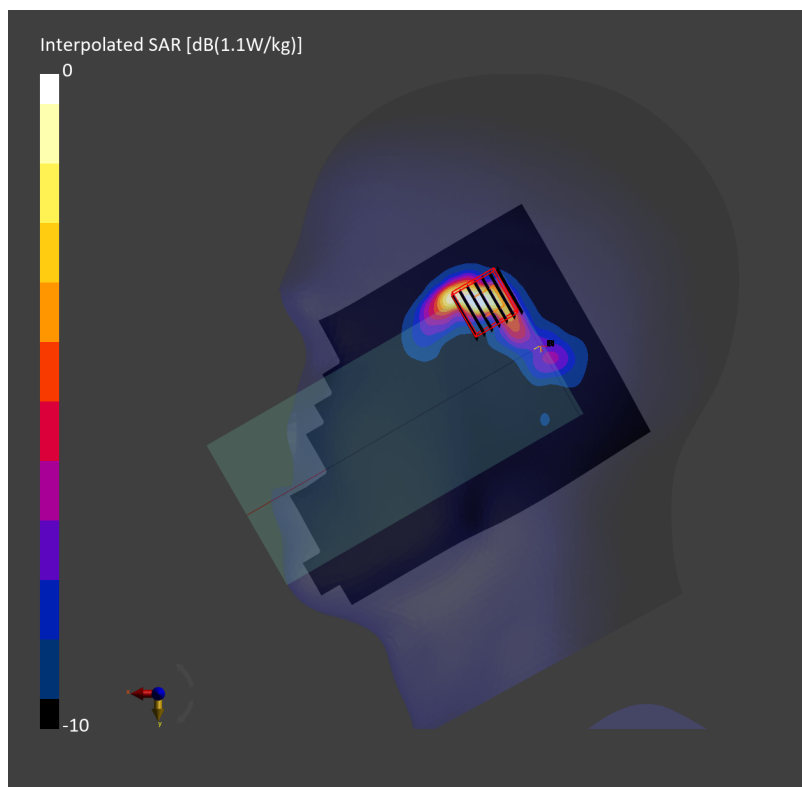
Zoom Scan (22.0 mm x 22.0 mm x 22.0 mm): Measurement Grid: 3.9 mm x 3.9 mm x 1.4 mm

Power Drift = 0.12 dB

SAR (1g) = 0.926 W/kg; SAR (8g) = 0.311 W/kg; SAR (10g) = 0.265 W/kg

Smallest distance from peaks to all points 3 dB below = 4.2 mm

Ratio of SAR at M2 to SAR at M1 = 64.3 %



#34_WLAN5GHz_802.11ac-VHT80 MCS0_Right Cheek_0mm_Ch171

Communication System: IEEE 802.11ac WiFi; Frequency: 5855.000 MHz

Medium: HSL_5G_240316 Medium parameters used: $f = 5855.000$ MHz; $\sigma = 5.27$ S/m; $\epsilon_r = 35.2$

Ambient Temperature: 23.5°C; Liquid Temperature: 22.5°C

DASY6 Configuration:

- Probe: EX3DV4 - SN7793; ConvF(4.37, 4.42, 4.46); Calibrated: 2024-03-01
- Sensor-Surface: 1.4 mm
- Electronics: DAE4 Sn1707; Calibrated: 2023-12-06
- Phantom: Twin-SAM V8.0 (30deg probe tilt); Serial: 2127; Section: RightHead
- Measurement Software: 16.2.4.2524
- UID: WLAN, 10544-AAD

Area Scan (120.0 mm x 200.0 mm): Measurement Grid: 10.0 mm x 10.0 mm

SAR (1g) = 0.711 W/kg; SAR (10g) = 0.236 W/kg;

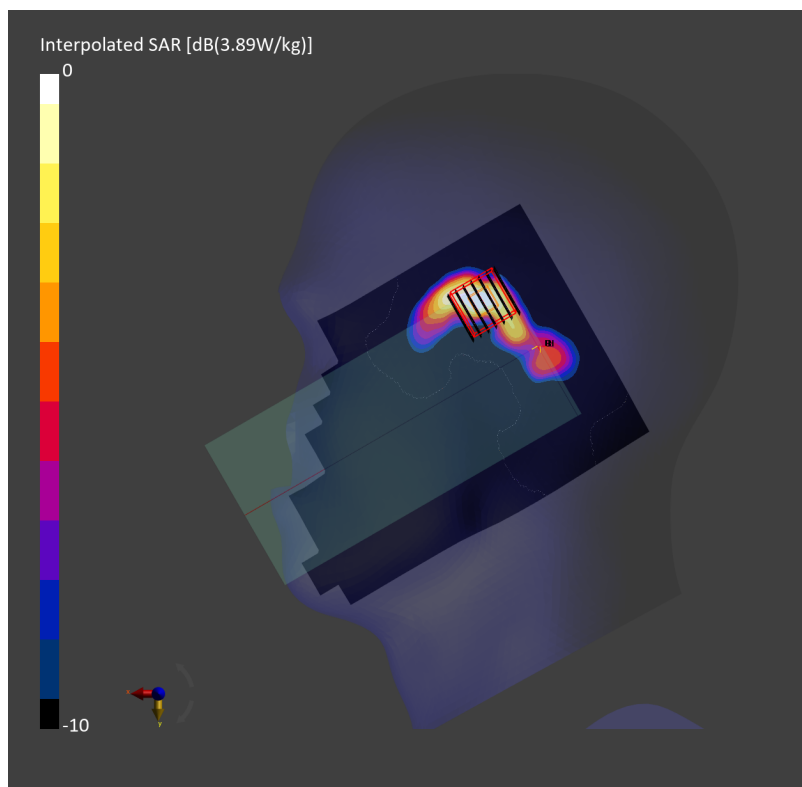
Zoom Scan (22.0 mm x 22.0 mm x 22.0 mm): Measurement Grid: 4.0 mm x 4.0 mm x 1.4 mm

Power Drift = 0.16 dB

SAR (1g) = 0.866 W/kg; SAR (8g) = 0.293 W/kg; SAR (10g) = 0.247 W/kg

Smallest distance from peaks to all points 3 dB below = 4.4 mm

Ratio of SAR at M2 to SAR at M1 = 60.6 %



#35_WLAN6GHz_802.11ax-HE160 MCS0_Left Cheek_0mm_Ch207

Communication System: IEEE 802.11ax; Frequency: 6985.000 MHz
Medium: HSL_6G_240319 Medium parameters used: $f = 6985.000$ MHz; $\sigma = 6.69$ S/m; $\epsilon_r = 33.9$
Ambient Temperature: 23.5°C; Liquid Temperature: 22.5°C

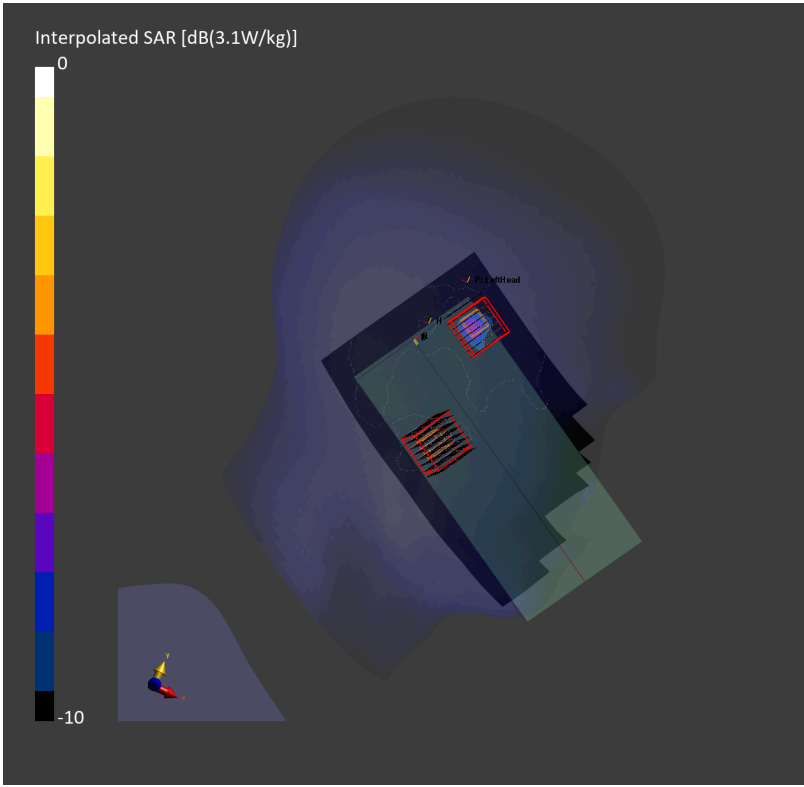
DASY6 Configuration:

- Probe: EX3DV4 - SN7694; ConvF(5.2, 5.2, 5.2); Calibrated: 2023-10-26
- Sensor-Surface: 1.4 mm
- Electronics: DAE4ip Sn1800; Calibrated: 2023-05-31
- Phantom: Twin-SAM V8.0 (30deg probe tilt); Serial: 2144; Section: LeftHead
- Measurement Software: 16.2.4.2524
- UID: WLAN, 10755-AAC

Area Scan (102.0 mm x 187.0 mm): Measurement Grid: 8.5 mm x 8.5 mm
SAR (1g) = 0.527 W/kg; SAR (10g) = 0.160 W/kg;

Zoom Scan (22.0 mm x 22.0 mm x 22.0 mm): Measurement Grid: 3.4 mm x 3.4 mm x 1.4 mm
Power Drift = 0.06 dB
SAR (1g) = 0.099 W/kg; SAR (8g) = 0.033 W/kg; SAR (10g) = 0.029 W/kg
Smallest distance from peaks to all points 3 dB below = 4.6 mm
Ratio of SAR at M2 to SAR at M1 = 56.6 %
psAPD (1.0cm², sq) = 0.994 [W/m²]; psAPD (4.0cm², sq) = 0.664 [W/m²]

Zoom Scan (22.0 mm x 22.0 mm x 22.0 mm): Measurement Grid: 3.4 mm x 3.4 mm x 1.4 mm
Power Drift = 0.06 dB
SAR (1g) = 0.546 W/kg; SAR (8g) = 0.204 W/kg; SAR (10g) = 0.180 W/kg
Smallest distance from peaks to all points 3 dB below = 4.6 mm
Ratio of SAR at M2 to SAR at M1 = 56.6 %
psAPD (1.0cm², sq) = 5.66 [W/m²]; psAPD (4.0cm², sq) = 4.09 [W/m²]



#36_Bluetooth_1Mbps_Left Cheek_0mm_Ch0

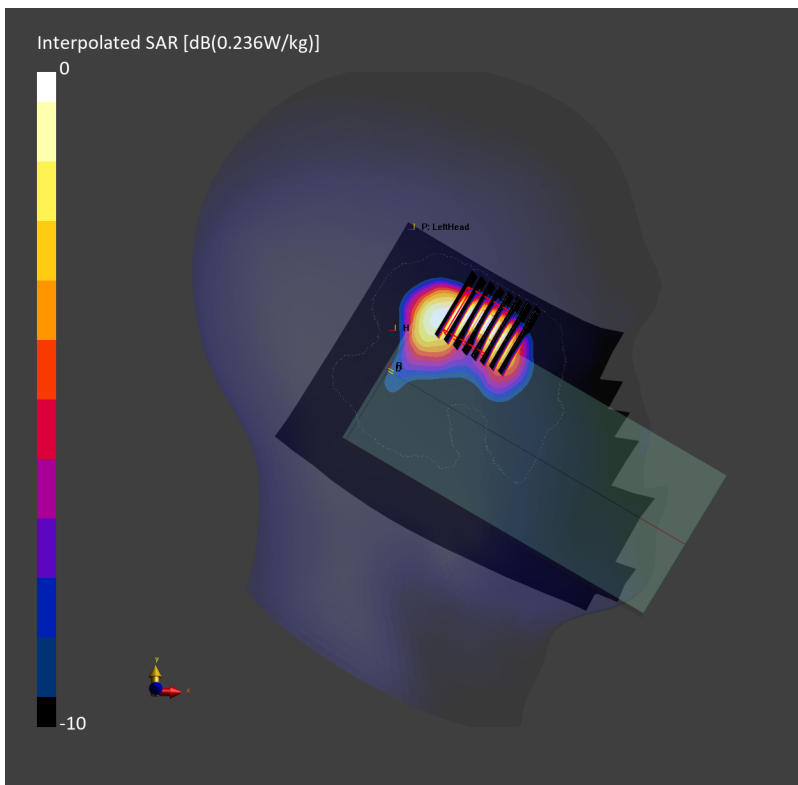
Communication System: IEEE 802.15.1 Bluetooth; Frequency: 2402.000 MHz
Medium: HSL_2450_240320 Medium parameters used: $f=2402.000$ MHz; $\sigma=1.73$ S/m; $\epsilon_r=39.3$
Ambient Temperature: 23.5°C; Liquid Temperature: 22.5°C

DASY6 Configuration:

- Probe: EX3DV4 - SN7700; ConvF(7.72, 7.83, 7.84); Calibrated: 2024-02-01
- Sensor-Surface: 1.4 mm
- Electronics: DAE4 Sn656; Calibrated: 2024-01-18
- Phantom: Twin-SAM V8.0 (30deg probe tilt); Serial: 2145; Section: LeftHead
- Measurement Software: 16.2.4.2524
- UID: Bluetooth, 10032-CAA

Area Scan (120.0 mm x 200.0 mm): Measurement Grid: 10.0 mm x 10.0 mm
SAR (1g) = 0.167 W/kg; SAR (10g) = 0.083 W/kg;

Zoom Scan (30.0 mm x 30.0 mm x 30.0 mm): Measurement Grid: 4.6 mm x 4.6 mm x 1.5 mm
Power Drift = -0.01 dB
SAR (1g) = 0.175 W/kg; SAR (8g) = 0.083 W/kg; SAR (10g) = 0.075 W/kg
Smallest distance from peaks to all points 3 dB below = 4.7 mm
Ratio of SAR at M2 to SAR at M1 = 72.8 %



#37_Thread_250K_Right Cheek_0mm_Ch25

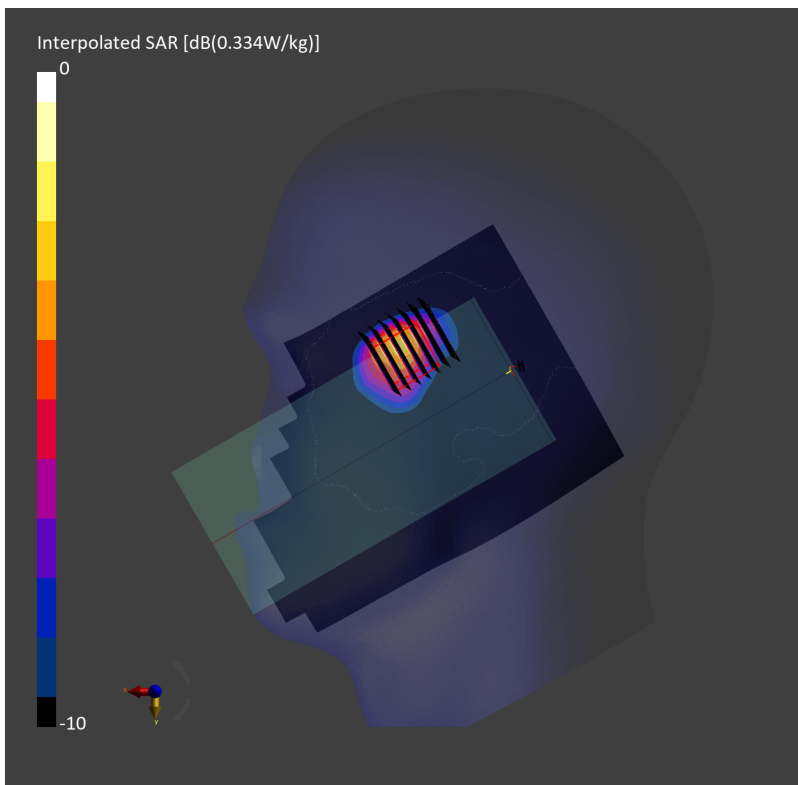
Communication System: IEEE 802.15.1 ; Frequency: 2475.000 MHz;Duty Cycle: 1:1
Medium: HSL_2450_240320 Medium parameters used: $f=2475.000$ MHz; $\sigma=1.81$ S/m; $\epsilon_r=39.0$
Ambient Temperature: 23.5°C; Liquid Temperature: 22.5°C

DASY6 Configuration:

- Probe: EX3DV4 - SN7700; ConvF(7.72, 7.83, 7.84); Calibrated: 2024-02-01
- Sensor-Surface: 1.4 mm
- Electronics: DAE4 Sn656; Calibrated: 2024-01-18
- Phantom: Twin-SAM V8.0 (30deg probe tilt); Serial: 2145; Section: RightHead
- Measurement Software: 16.2.4.2524
- UID: Bluetooth, 10032-CAA

Area Scan (120.0 mm x 200.0 mm): Measurement Grid: 10.0 mm x 10.0 mm
SAR (1g) = 0.133 W/kg; SAR (10g) = 0.066 W/kg;

Zoom Scan (30.0 mm x 30.0 mm x 30.0 mm): Measurement Grid: 5.0 mm x 5.0 mm x 1.5 mm
Power Drift = -0.01 dB
SAR (1g) = 0.133 W/kg; SAR (8g) = 0.078 W/kg; SAR (10g) = 0.071 W/kg
Smallest distance from peaks to all points 3 dB below = 7.3 mm
Ratio of SAR at M2 to SAR at M1 = 77.2 %



#38_GSM850_GPRS (4 Tx slots)_Back_10mm_Ch189

Communication System: GPRS-FDD; Frequency: 836.400 MHz

Medium: HSL_850_240307 Medium parameters used: $f=836.400$ MHz; $\sigma=0.930$ S/m; $\epsilon_r=41.9$

Ambient Temperature: 23.7°C; Liquid Temperature: 22.7°C

DASY6 Configuration:

- Probe: EX3DV4 - SN7694; ConvF(9.48, 9.48, 9.48); Calibrated: 2023-10-26
- Sensor-Surface: 1.4 mm
- Electronics: DAE4ip Sn1800; Calibrated: 2023-05-31
- Phantom: Twin-SAM V8.0 (30deg probe tilt); Serial: 2144; Section: Flat
- Measurement Software: 16.2.4.2524
- UID: GSM, 10028-DAC

Area Scan (120.0 mm x 210.0 mm): Measurement Grid: 15.0 mm x 15.0 mm

SAR (1g) = 0.444 W/kg; SAR (10g) = 0.290 W/kg;

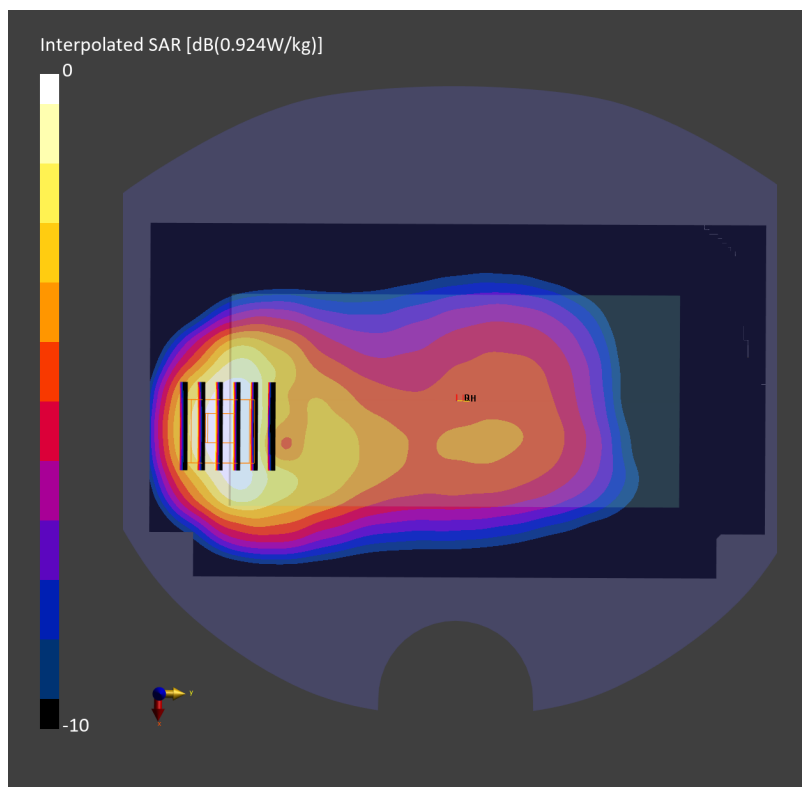
Zoom Scan (30.0 mm x 30.0 mm x 30.0 mm): Measurement Grid: 6.0 mm x 6.0 mm x 1.5 mm

Power Drift = -0.00 dB

SAR (1g) = 0.479 W/kg; SAR (8g) = 0.289 W/kg; SAR (10g) = 0.269 W/kg

Smallest distance from peaks to all points 3 dB below = 10.8 mm

Ratio of SAR at M2 to SAR at M1 = 80.7 %



#39_GSM1900_GPRS (4 Tx slots)_Bottom Side_10mm_Ch661

Communication System: GPRS-FDD; Frequency: 1880.000 MHz

Medium: HSL_1900_240308 Medium parameters used: $f=1880.000$ MHz; $\sigma=1.41$ S/m; $\epsilon_r=39.0$

Ambient Temperature: 23.8°C; Liquid Temperature: 22.8°C

DASY6 Configuration:

- Probe: EX3DV4 - SN7694; ConvF(8.3, 8.3, 8.3); Calibrated: 2023-10-26
- Sensor-Surface: 1.4 mm
- Electronics: DAE4ip Sn1800; Calibrated: 2023-05-31
- Phantom: Twin-SAM V8.0 (30deg probe tilt); Serial: 2144; Section: Flat
- Measurement Software: 16.2.4.2524
- UID: GSM, 10028-DAC

Area Scan (54.0 mm x 120.0 mm): Measurement Grid: 9.0 mm x 15.0 mm

SAR (1g) = 0.456 W/kg; SAR (10g) = 0.228 W/kg;

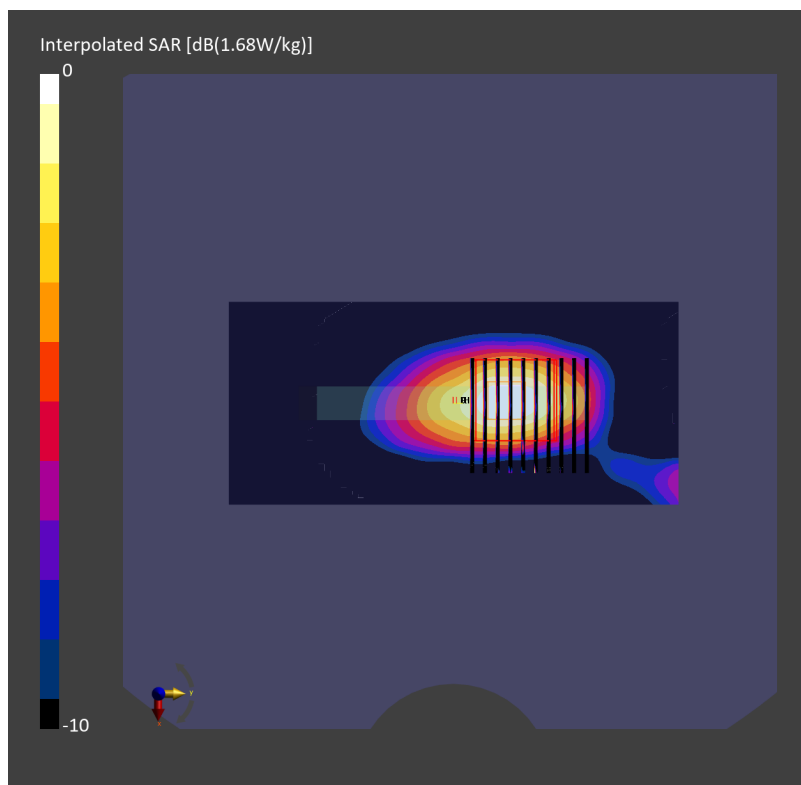
Zoom Scan (30.0 mm x 30.0 mm x 30.0 mm): Measurement Grid: 3.4 mm x 3.4 mm x 1.4 mm

Power Drift = 0.02 dB

SAR (1g) = 0.603 W/kg; SAR (8g) = 0.349 W/kg; SAR (10g) = 0.323 W/kg

Smallest distance from peaks to all points 3 dB below = 7.5 mm

Ratio of SAR at M2 to SAR at M1 = 42.2 %



#40_WCDMA II_RMC 12.2Kbps_Bottom Side_10mm_Ch9400

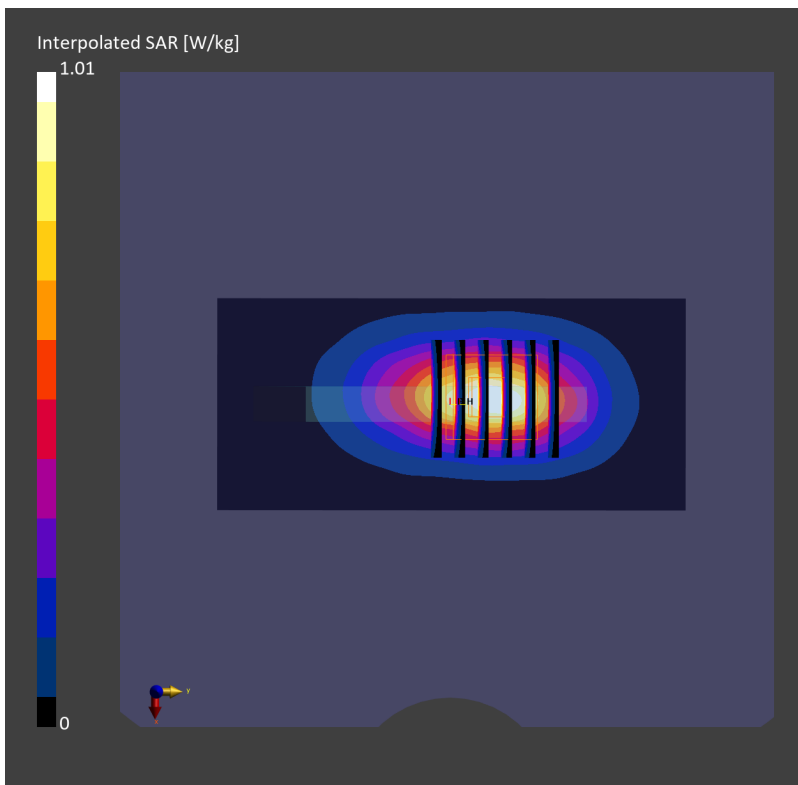
Communication System: UMTS-FDD; Frequency: 1880.000 MHz
Medium: HSL_1900_240309 Medium parameters used: $f=1880.000$ MHz; $\sigma=1.40$ S/m; $\epsilon_r=39.1$
Ambient Temperature: 23.4°C; Liquid Temperature: 22.4°C

DASY6 Configuration:

- Probe: EX3DV4 - SN7700; ConvF(7.7, 7.85, 7.85); Calibrated: 2024-02-01
- Sensor-Surface: 1.4 mm
- Electronics: DAE4 Sn656; Calibrated: 2024-01-18
- Phantom: Twin-SAM V8.0 (30deg probe tilt); Serial: 2145; Section: Flat
- Measurement Software: 16.2.4.2524
- UID: WCDMA, 10011-CAC

Area Scan (54.0 mm x 120.0 mm): Measurement Grid: 9.0 mm x 15.0 mm
SAR (1g) = 0.557 W/kg; SAR (10g) = 0.288 W/kg;

Zoom Scan (30.0 mm x 30.0 mm x 30.0 mm): Measurement Grid: 6.0 mm x 6.0 mm x 1.5 mm
Power Drift = 0.01 dB
SAR (1g) = 0.580 W/kg; SAR (8g) = 0.332 W/kg; SAR (10g) = 0.306 W/kg
Smallest distance from peaks to all points 3 dB below = 9.6 mm
Ratio of SAR at M2 to SAR at M1 = 85.4 %



#41_WCDMA IV_RMC 12.2Kbps_Bottom Side_10mm_Ch1413

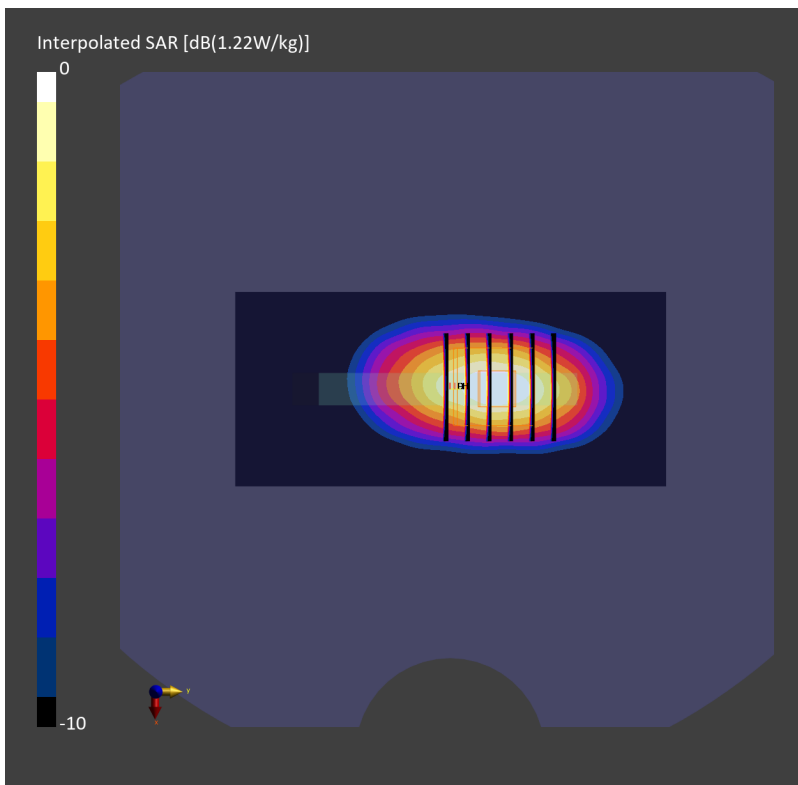
Communication System: UMTS-FDD; Frequency: 1732.600 MHz
Medium: HSL_1750_240308 Medium parameters used: $f=1732.600$ MHz; $\sigma=1.36$ S/m; $\epsilon_r=40.7$
Ambient Temperature: 23.6°C; Liquid Temperature: 22.6°C

DASY6 Configuration:

- Probe: EX3DV4 - SN7700; ConvF(8.14, 8.24, 8.22); Calibrated: 2024-02-01
- Sensor-Surface: 1.4 mm
- Electronics: DAE4 Sn656; Calibrated: 2024-01-18
- Phantom: Twin-SAM V8.0 (30deg probe tilt); Serial: 2145; Section: Flat
- Measurement Software: 16.2.4.2524
- UID: WCDMA, 10011-CAC

Area Scan (54.0 mm x 120.0 mm): Measurement Grid: 9.0 mm x 15.0 mm
SAR (1g) = 0.685 W/kg; SAR (10g) = 0.358 W/kg;

Zoom Scan (30.0 mm x 30.0 mm x 30.0 mm): Measurement Grid: 6.0 mm x 6.0 mm x 1.5 mm
Power Drift = -0.04 dB
SAR (1g) = 0.702 W/kg; SAR (8g) = 0.410 W/kg; SAR (10g) = 0.378 W/kg
Smallest distance from peaks to all points 3 dB below = 9.6 mm
Ratio of SAR at M2 to SAR at M1 = 84.6 %



#42_WCDMA V_RMC 12.2Kbps_Back_10mm_Ch4182

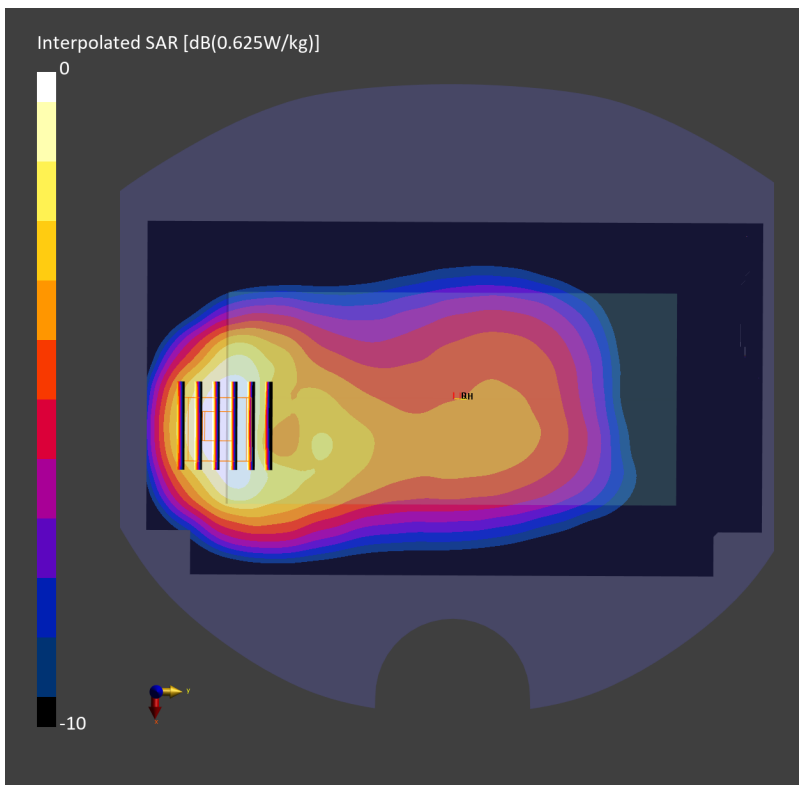
Communication System: UMTS-FDD; Frequency: 836.400 MHz
Medium: HSL_850_240307 Medium parameters used: $f=836.400$ MHz; $\sigma=0.930$ S/m; $\epsilon_r=41.9$
Ambient Temperature: 23.7°C; Liquid Temperature: 22.7°C

DASY6 Configuration:

- Probe: EX3DV4 - SN7694; ConvF(9.48, 9.48, 9.48); Calibrated: 2023-10-26
- Sensor-Surface: 1.4 mm
- Electronics: DAE4ip Sn1800; Calibrated: 2023-05-31
- Phantom: Twin-SAM V8.0 (30deg probe tilt); Serial: 2144; Section: Flat
- Measurement Software: 16.2.4.2524
- UID: WCDMA, 10011-CAC

Area Scan (120.0 mm x 210.0 mm): Measurement Grid: 15.0 mm x 15.0 mm
SAR (1g) = 0.546 W/kg; SAR (10g) = 0.359 W/kg;

Zoom Scan (30.0 mm x 30.0 mm x 30.0 mm): Measurement Grid: 6.0 mm x 6.0 mm x 1.5 mm
Power Drift = -0.02 dB
SAR (1g) = 0.584 W/kg; SAR (8g) = 0.355 W/kg; SAR (10g) = 0.331 W/kg
Smallest distance from peaks to all points 3 dB below = 10.8 mm
Ratio of SAR at M2 to SAR at M1 = 80.7 %



#43_LTE Band 7_20M_QPSK_1_0_Bottom Side_10mm_Ch21100

Communication System: LTE-FDD; Frequency: 2535.000 MHz

Medium: HSL_2600_240310 Medium parameters used: $f=2535.000$ MHz; $\sigma=1.94$ S/m; $\epsilon_r=40.0$

Ambient Temperature: 23.5°C; Liquid Temperature: 22.5°C

DASY6 Configuration:

- Probe: EX3DV4 - SN7694; ConvF(7.47, 7.47, 7.47); Calibrated: 2023-10-26
- Sensor-Surface: 1.4 mm
- Electronics: DAE4ip Sn1800; Calibrated: 2023-05-31
- Phantom: Twin-SAM V8.0 (30deg probe tilt); Serial: 2144; Section: Flat
- Measurement Software: 16.2.4.2524
- UID: LTE-FDD, 10169-CAF

Area Scan (54.0 mm x 120.0 mm): Measurement Grid: 9.0 mm x 10.0 mm

SAR (1g) = 0.542 W/kg; SAR (10g) = 0.259 W/kg;

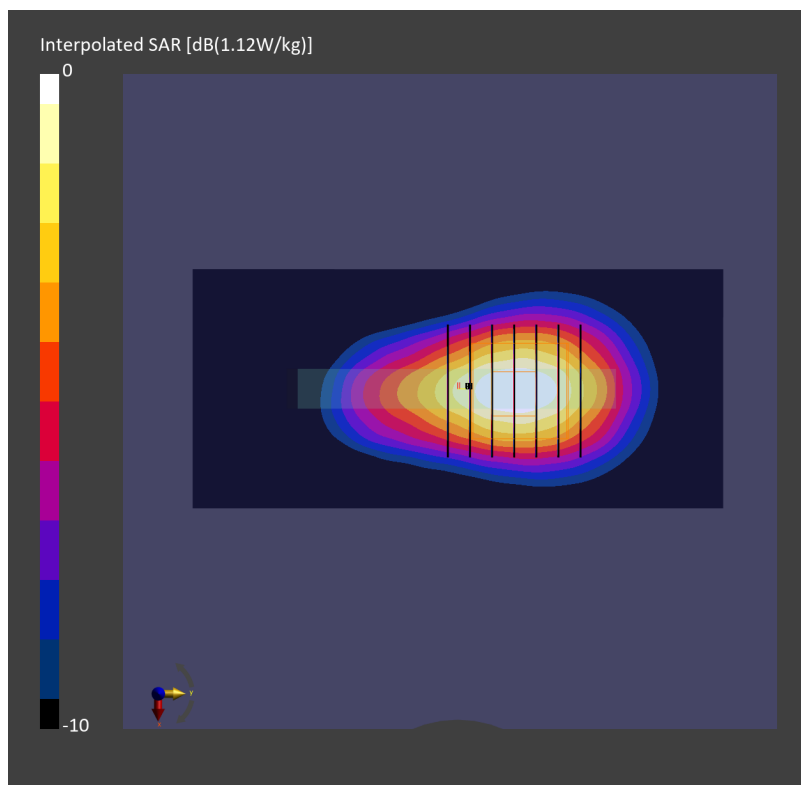
Zoom Scan (30.0 mm x 30.0 mm x 30.0 mm): Measurement Grid: 5.0 mm x 5.0 mm x 1.5 mm

Power Drift = -0.09 dB

SAR (1g) = 0.553 W/kg; SAR (8g) = 0.298 W/kg; SAR (10g) = 0.272 W/kg

Smallest distance from peaks to all points 3 dB below = 10.0 mm

Ratio of SAR at M2 to SAR at M1 = 79.8 %



#44_LTE Band 12_10M_QPSK_1_0_Left Side_10mm_Ch23095

Communication System: LTE-FDD; Frequency: 707.500 MHz

Medium: HSL_750_240226 Medium parameters used: $f=707.500$ MHz; $\sigma=0.886$ S/m; $\epsilon_r=42.5$

Ambient Temperature: 23.6°C; Liquid Temperature: 22.6°C

DASY6 Configuration:

- Probe: EX3DV4 - SN7700; ConvF(9.45, 9.55, 9.92); Calibrated: 2024-02-01
- Sensor-Surface: 1.4 mm
- Electronics: DAE4 Sn656; Calibrated: 2024-01-18
- Phantom: Twin-SAM V8.0 (30deg probe tilt); Serial: 2145; Section: Flat
- Measurement Software: 16.2.4.2524
- UID: LTE-FDD, 10175-CAH

Area Scan (54.0 mm x 210.0 mm): Measurement Grid: 9.0 mm x 15.0 mm

SAR (1g) = 0.411 W/kg; SAR (10g) = 0.283 W/kg;

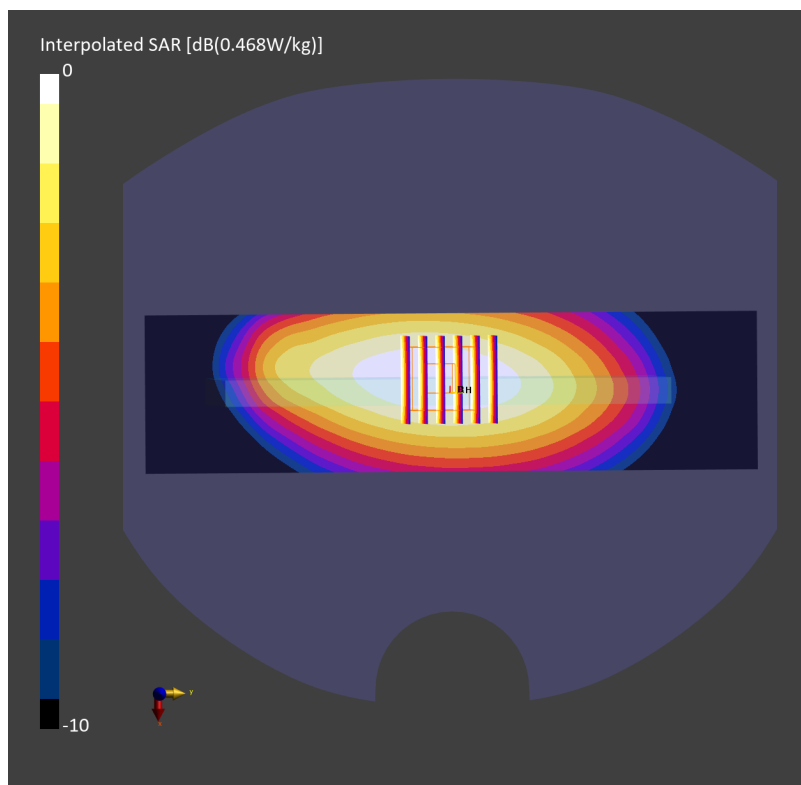
Zoom Scan (30.0 mm x 30.0 mm x 30.0 mm): Measurement Grid: 6.0 mm x 6.0 mm x 1.5 mm

Power Drift = 0.03 dB

SAR (1g) = 0.422 W/kg; SAR (8g) = 0.309 W/kg; SAR (10g) = 0.295 W/kg

Smallest distance from peaks to all points 3 dB below = > 15.0 mm

Ratio of SAR at M2 to SAR at M1 = 88.2 %



#45_LTE Band 13_10M_QPSK_1_0_Left Side_10mm_Ch23230

Communication System: LTE-FDD; Frequency: 782.000 MHz

Medium: HSL_750_240226 Medium parameters used: $f=782.000$ MHz; $\sigma=0.911$ S/m; $\epsilon_r=42.0$

Ambient Temperature: 23.6°C; Liquid Temperature: 22.6°C

DASY6 Configuration:

- Probe: EX3DV4 - SN7700; ConvF(9.45, 9.55, 9.92); Calibrated: 2024-02-01
- Sensor-Surface: 1.4 mm
- Electronics: DAE4 Sn656; Calibrated: 2024-01-18
- Phantom: Twin-SAM V8.0 (30deg probe tilt); Serial: 2145; Section: Flat
- Measurement Software: 16.2.4.2524
- UID: LTE-FDD, 10175-CAH

Area Scan (54.0 mm x 210.0 mm): Measurement Grid: 9.0 mm x 15.0 mm

SAR (1g) = 0.542 W/kg; SAR (10g) = 0.369 W/kg;

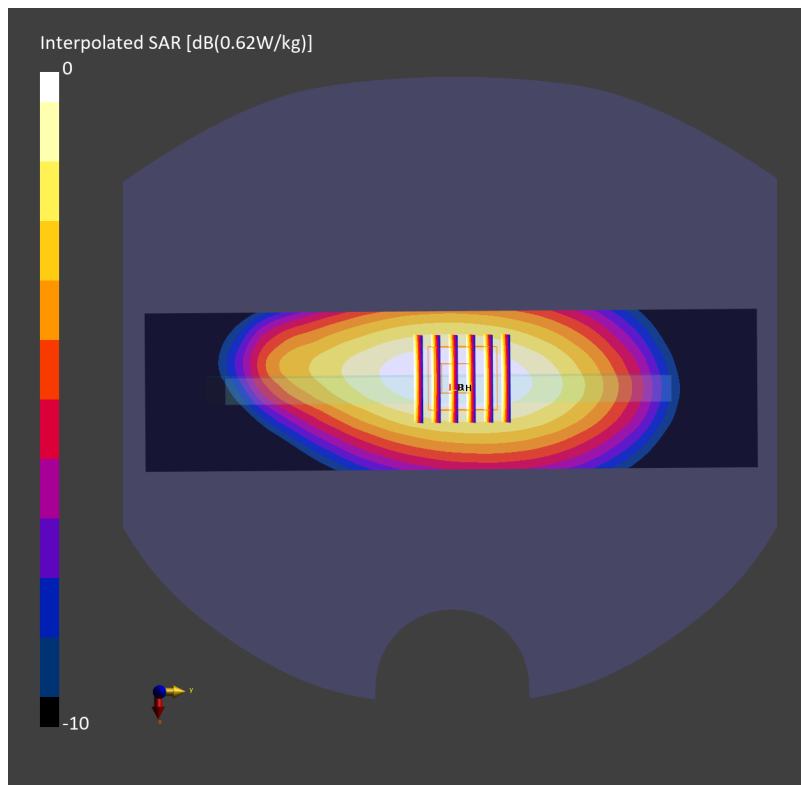
Zoom Scan (30.0 mm x 30.0 mm x 30.0 mm): Measurement Grid: 6.0 mm x 6.0 mm x 1.5 mm

Power Drift = -0.01 dB

SAR (1g) = 0.555 W/kg; SAR (8g) = 0.404 W/kg; SAR (10g) = 0.385 W/kg

Smallest distance from peaks to all points 3 dB below = > 15.0 mm

Ratio of SAR at M2 to SAR at M1 = 88.3 %



#46_LTE Band 14_10M_QPSK_1_0_Back_10mm_Ch23330

Communication System: LTE-FDD; Frequency: 793.000 MHz

Medium: HSL_750_240305 Medium parameters used: $f=793.000$ MHz; $\sigma=0.915$ S/m; $\epsilon_r=42.5$

Ambient Temperature: 23.5°C; Liquid Temperature: 22.5°C

DASY6 Configuration:

- Probe: EX3DV4 - SN7700; ConvF(9.45, 9.55, 9.92); Calibrated: 2024-02-01
- Sensor-Surface: 1.4 mm
- Electronics: DAE4 Sn656; Calibrated: 2024-01-18
- Phantom: Twin-SAM V8.0 (30deg probe tilt); Serial: 2145; Section: Flat
- Measurement Software: 16.2.4.2524
- UID: LTE-FDD, 10175-CAH

Area Scan (120.0 mm x 210.0 mm): Measurement Grid: 15.0 mm x 15.0 mm

SAR (1g) = 0.456 W/kg; SAR (10g) = 0.305 W/kg;

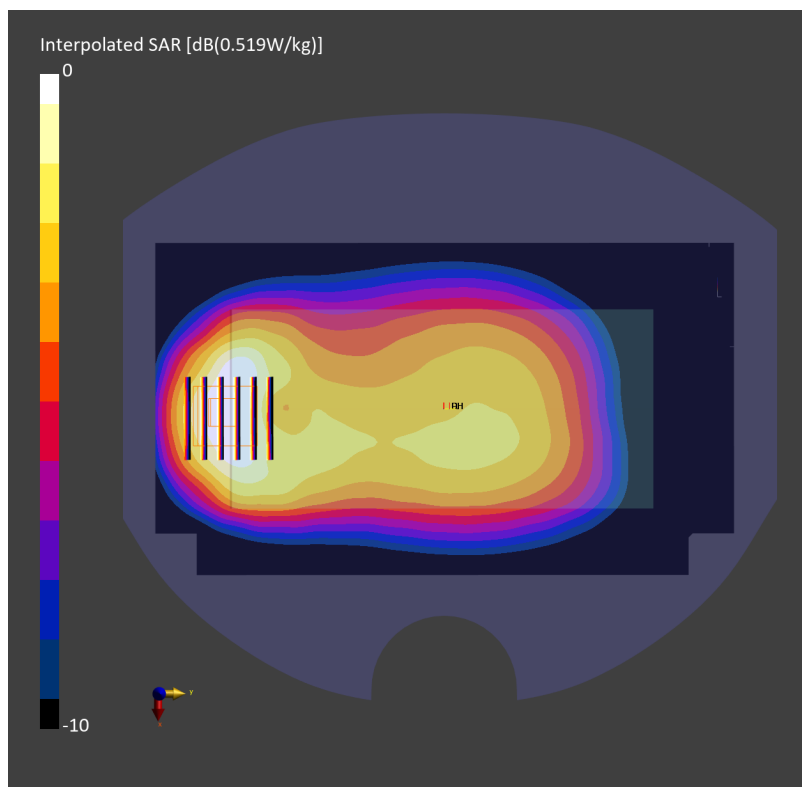
Zoom Scan (30.0 mm x 30.0 mm x 30.0 mm): Measurement Grid: 6.0 mm x 6.0 mm x 1.5 mm

Power Drift = 0.00 dB

SAR (1g) = 0.482 W/kg; SAR (8g) = 0.299 W/kg; SAR (10g) = 0.279 W/kg

Smallest distance from peaks to all points 3 dB below = 12.1 mm

Ratio of SAR at M2 to SAR at M1 = 83.8 %



#47_LTE Band 25_20M_QPSK_1_0_Top Side_10mm_Ch26340

Communication System: LTE; Frequency: 1880.000 MHz

Medium: HSL_1900_240309 Medium parameters used: $f=1880.000$ MHz; $\sigma=1.40$ S/m; $\epsilon_r=39.1$

Ambient Temperature: 23.4°C; Liquid Temperature: 22.4°C

DASY6 Configuration:

- Probe: EX3DV4 - SN7700; ConvF(7.7, 7.85, 7.85); Calibrated: 2024-02-01
- Sensor-Surface: 1.4 mm
- Electronics: DAE4 Sn656; Calibrated: 2024-01-18
- Phantom: Twin-SAM V8.0 (30deg probe tilt); Serial: 2145; Section: Flat
- Measurement Software: 16.2.4.2524
- UID: LTE-FDD, 10169-CAF

Area Scan (54.0 mm x 120.0 mm): Measurement Grid: 9.0 mm x 15.0 mm

SAR (1g) = 0.529 W/kg; SAR (10g) = 0.257 W/kg;

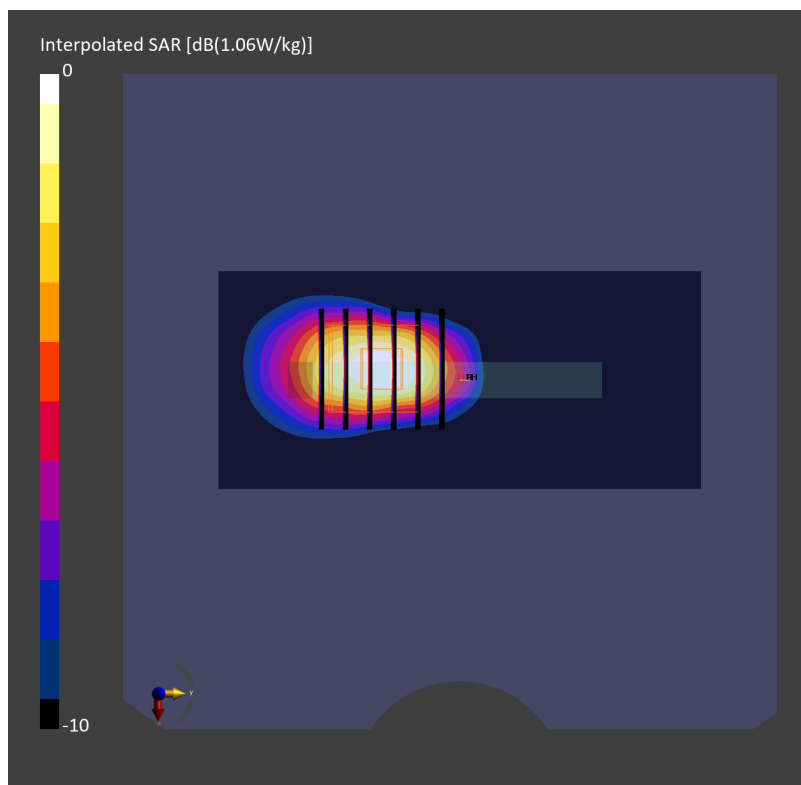
Zoom Scan (30.0 mm x 30.0 mm x 30.0 mm): Measurement Grid: 6.0 mm x 6.0 mm x 1.5 mm

Power Drift = 0.00 dB

SAR (1g) = 0.566 W/kg; SAR (8g) = 0.297 W/kg; SAR (10g) = 0.270 W/kg

Smallest distance from peaks to all points 3 dB below = 7.3 mm

Ratio of SAR at M2 to SAR at M1 = 83.7 %



#48_LTE Band 26_15M_QPSK_1_0_Back_10mm_Ch26865

Communication System: LTE-FDD ; Frequency: 831.500 MHz

Medium: HSL_850_240304 Medium parameters used: $f=831.500$ MHz; $\sigma=0.926$ S/m; $\epsilon_r=42.7$

Ambient Temperature: 23.5°C; Liquid Temperature: 22.5°C

DASY6 Configuration:

- Probe: EX3DV4 - SN7694; ConvF(9.48, 9.48, 9.48); Calibrated: 2023-10-26
- Sensor-Surface: 1.4 mm
- Electronics: DAE4ip Sn1800; Calibrated: 2023-05-31
- Phantom: Twin-SAM V8.0 (30deg probe tilt); Serial: 2144; Section: Flat
- Measurement Software: 16.2.4.2524
- UID: LTE-FDD, 10181-CAF

Area Scan (120.0 mm x 210.0 mm): Measurement Grid: 15.0 mm x 15.0 mm

SAR (1g) = 0.571 W/kg; SAR (10g) = 0.381 W/kg;

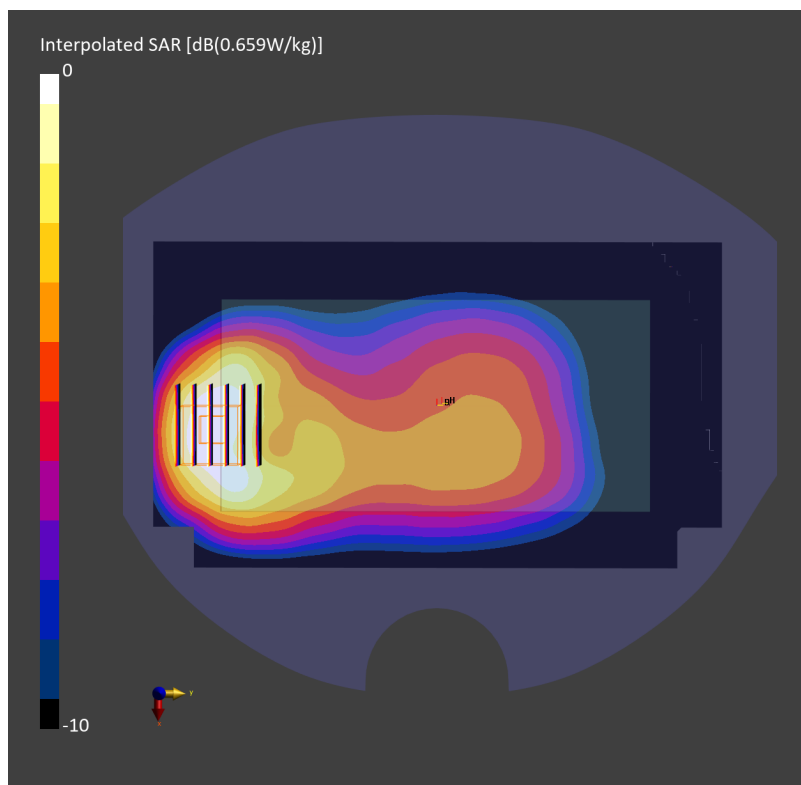
Zoom Scan (30.0 mm x 30.0 mm x 30.0 mm): Measurement Grid: 6.0 mm x 6.0 mm x 1.5 mm

Power Drift = 0.00 dB

SAR (1g) = 0.665 W/kg; SAR (8g) = 0.389 W/kg; SAR (10g) = 0.362 W/kg

Smallest distance from peaks to all points 3 dB below = 10.8 mm

Ratio of SAR at M2 to SAR at M1 = 80.4 %



#49_LTE Band 30_10M_QPSK_1_0_Bottom Side_0mm_Ch27710

Communication System: LTE; Frequency: 2310.000 MHz

Medium: HSL_2300_240314 Medium parameters used: $f=2310.000$ MHz; $\sigma=1.66$ S/m; $\epsilon_r=39.6$

Ambient Temperature: 23.4°C; Liquid Temperature: 22.4°C

DASY6 Configuration:

- Probe: EX3DV4 - SN7700; ConvF(7.36, 7.47, 7.48); Calibrated: 2024-02-01
- Sensor-Surface: 1.4 mm
- Electronics: DAE4 Sn656; Calibrated: 2024-01-18
- Phantom: Twin-SAM V8.0 (30deg probe tilt); Serial: 2145; Section: Flat
- Measurement Software: 16.2.4.2524
- UID: LTE-FDD, 10175-CAH

Area Scan (54.0 mm x 120.0 mm): Measurement Grid: 9.0 mm x 10.0 mm

SAR (1g) = 0.566 W/kg; SAR (10g) = 0.271 W/kg;

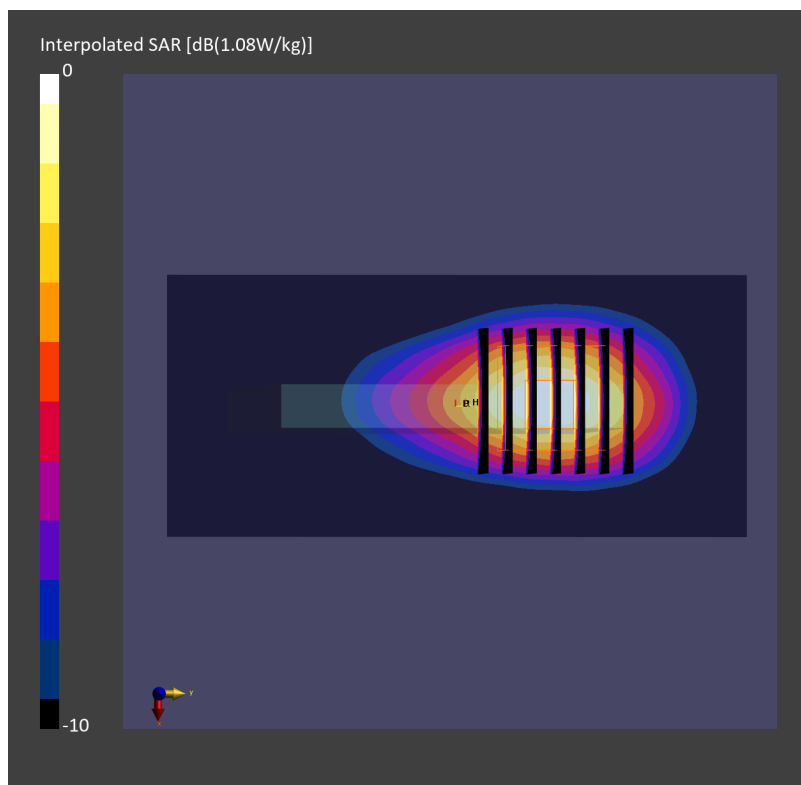
Zoom Scan (30.0 mm x 30.0 mm x 30.0 mm): Measurement Grid: 5.0 mm x 5.0 mm x 1.5 mm

Power Drift = -0.10 dB

SAR (1g) = 0.572 W/kg; SAR (8g) = 0.309 W/kg; SAR (10g) = 0.282 W/kg

Smallest distance from peaks to all points 3 dB below = 9.9 mm

Ratio of SAR at M2 to SAR at M1 = 82.8 %



#50_LTE Band 41_20M_QPSK_1_0_Bottom Side_10mm_Ch40620

Communication System: LTE-TDD; Frequency: 2593.000 MHz

Medium: HSL_2600_240310 Medium parameters used: $f=2593.000$ MHz; $\sigma=1.97$ S/m; $\epsilon_r=39.8$

Ambient Temperature: 23.5°C; Liquid Temperature: 22.5°C

DASY6 Configuration:

- Probe: EX3DV4 - SN7694; ConvF(7.47, 7.47, 7.47); Calibrated: 2023-10-26
- Sensor-Surface: 1.4 mm
- Electronics: DAE4ip Sn1800; Calibrated: 2023-05-31
- Phantom: Twin-SAM V8.0 (30deg probe tilt); Serial: 2144; Section: Flat
- Measurement Software: 16.2.4.2524
- UID: LTE-TDD, 10435-AAG

Area Scan (54.0 mm x 120.0 mm): Measurement Grid: 9.0 mm x 10.0 mm

SAR (1g) = 0.576 W/kg; SAR (10g) = 0.273 W/kg;

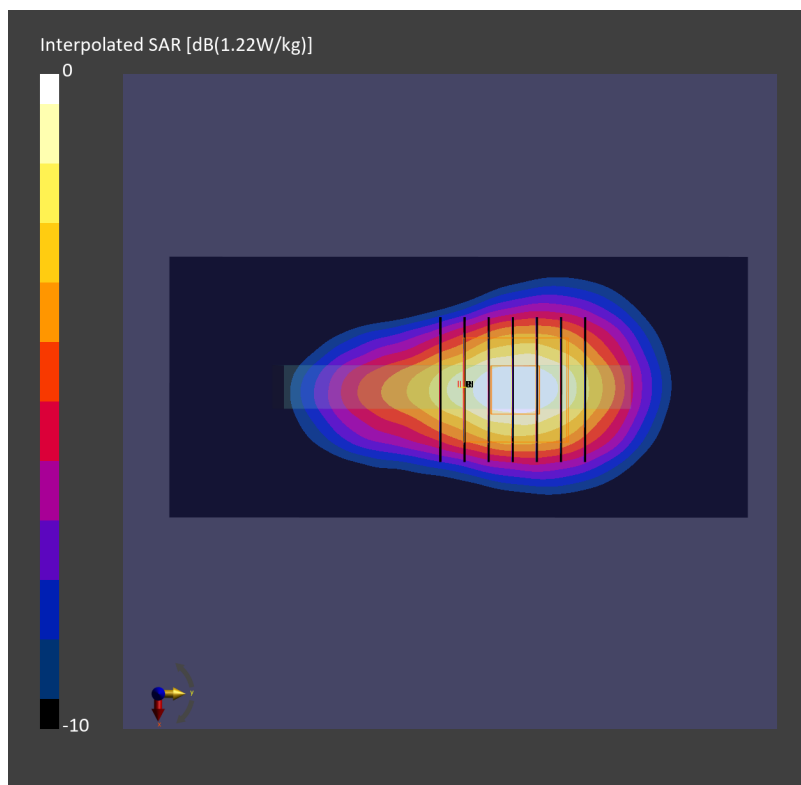
Zoom Scan (30.0 mm x 30.0 mm x 30.0 mm): Measurement Grid: 5.0 mm x 5.0 mm x 1.5 mm

Power Drift = -0.01 dB

SAR (1g) = 0.587 W/kg; SAR (8g) = 0.310 W/kg; SAR (10g) = 0.281 W/kg

Smallest distance from peaks to all points 3 dB below = 10.0 mm

Ratio of SAR at M2 to SAR at M1 = 78.8 %



#51_LTE Band 48_20M_QPSK_1_0_Left Side_10mm_Ch55830

Communication System: LTE-TDD; Frequency: 3609.000 MHz

Medium: HSL_3700_240315 Medium parameters used: $f=3609.000$ MHz; $\sigma=3.00$ S/m; $\epsilon_r=36.6$

Ambient Temperature: 23.5°C; Liquid Temperature: 22.5°C

DASY6 Configuration:

- Probe: EX3DV4 - SN7700; ConvF(6.95, 6.98, 7.0); Calibrated: 2024-02-01
- Sensor-Surface: 1.4 mm
- Electronics: DAE4 Sn656; Calibrated: 2024-01-18
- Phantom: Twin-SAM V8.0 (30deg probe tilt); Serial: 2145; Section: Flat
- Measurement Software: 16.2.4.2524
- UID: LTE-TDD, 10435-AAG

Area Scan (54.0 mm x 200.0 mm): Measurement Grid: 9.0 mm x 10.0 mm

SAR (1g) = 0.464 W/kg; SAR (10g) = 0.204 W/kg;

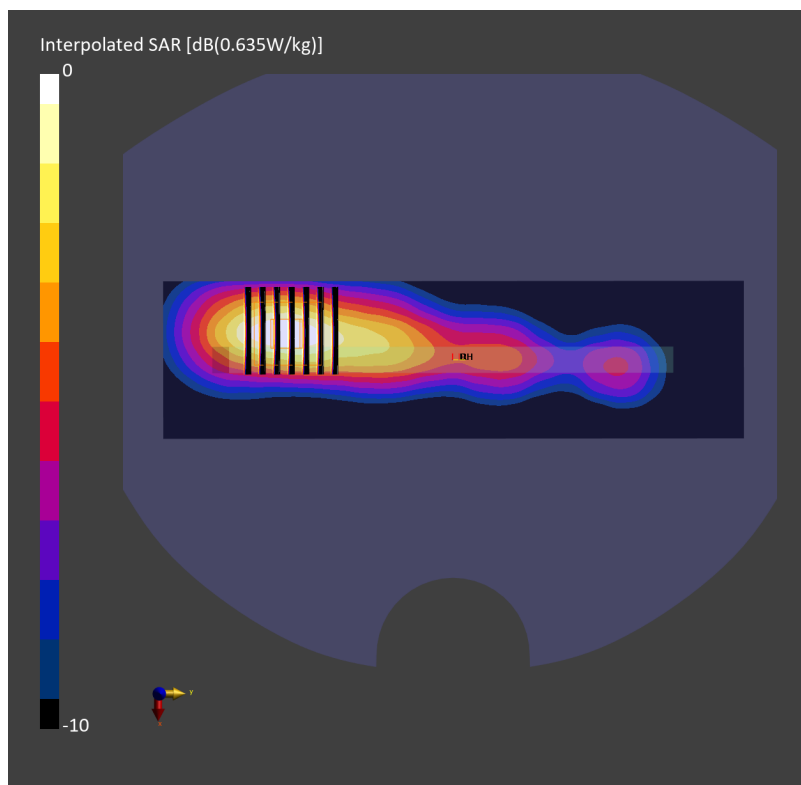
Zoom Scan (28.0 mm x 28.0 mm x 28.0 mm): Measurement Grid: 5.0 mm x 5.0 mm x 1.4 mm

Power Drift = 0.00 dB

SAR (1g) = 0.507 W/kg; SAR (8g) = 0.243 W/kg; SAR (10g) = 0.219 W/kg

Smallest distance from peaks to all points 3 dB below = 10.0 mm

Ratio of SAR at M2 to SAR at M1 = 76.8 %



#52_LTE Band 66_20M_QPSK_50_0_Back_10mm_Ch132572

Communication System: LTE; Frequency: 1770.000 MHz

Medium: HSL_1750_240309 Medium parameters used: $f=1770.000$ MHz; $\sigma=1.37$ S/m; $\epsilon_r=40.5$

Ambient Temperature: 23.4°C; Liquid Temperature: 22.4°C

DASY6 Configuration:

- Probe: EX3DV4 - SN7700; ConvF(8.14, 8.24, 8.22); Calibrated: 2024-02-01
- Sensor-Surface: 1.4 mm
- Electronics: DAE4 Sn656; Calibrated: 2024-01-18
- Phantom: Twin-SAM V8.0 (30deg probe tilt); Serial: 2145; Section: Flat
- Measurement Software: 16.2.4.2524
- UID: LTE-FDD, 10297-AAE

Area Scan (120.0 mm x 210.0 mm): Measurement Grid: 15.0 mm x 15.0 mm

SAR (1g) = 0.610 W/kg; SAR (10g) = 0.324 W/kg;

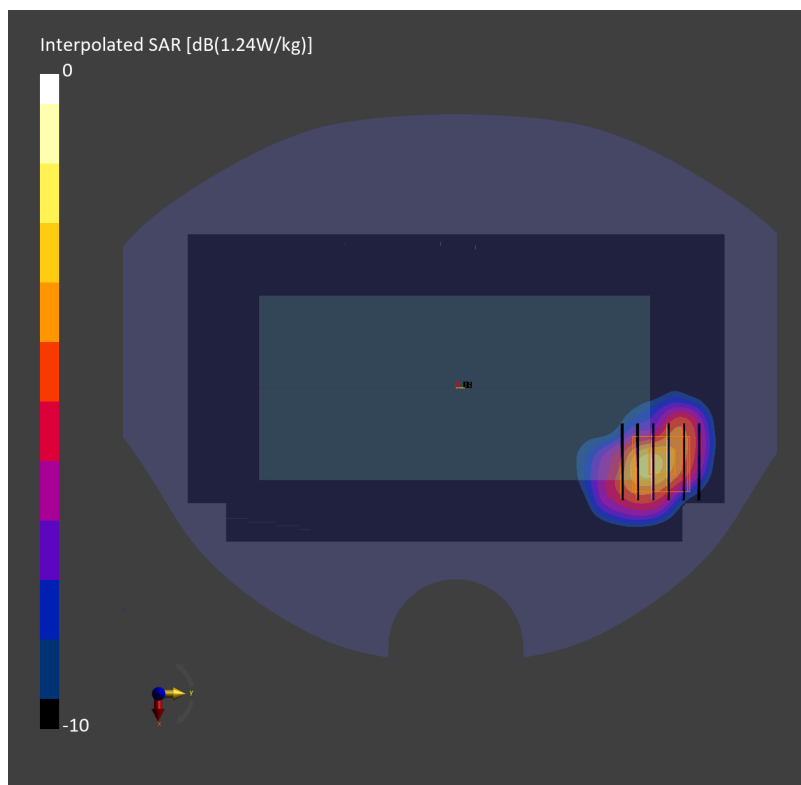
Zoom Scan (30.0 mm x 30.0 mm x 30.0 mm): Measurement Grid: 6.0 mm x 6.0 mm x 1.5 mm

Power Drift = 0.01 dB

SAR (1g) = 0.699 W/kg; SAR (8g) = 0.381 W/kg; SAR (10g) = 0.350 W/kg

Smallest distance from peaks to all points 3 dB below = 8.1 mm

Ratio of SAR at M2 to SAR at M1 = 83.3 %



#53_LTE Band 71_20M_QPSK_1_0_Left Side_10mm_Ch133297

Communication System: LTE-FDD; Frequency: 680.500 MHz

Medium: HSL_750_240305 Medium parameters used: $f=680.500$ MHz; $\sigma=0.871$ S/m; $\epsilon_r=42.5$

Ambient Temperature: 23.7°C; Liquid Temperature: 22.7°C

DASY6 Configuration:

- Probe: EX3DV4 - SN7694; ConvF(9.84, 9.84, 9.84); Calibrated: 2023-10-26
- Sensor-Surface: 1.4 mm
- Electronics: DAE4ip Sn1800; Calibrated: 2023-05-31
- Phantom: Twin-SAM V8.0 (30deg probe tilt); Serial: 2144; Section: Flat
- Measurement Software: 16.2.4.2524
- UID: LTE-FDD, 10169-CAF

Area Scan (54.0 mm x 210.0 mm): Measurement Grid: 9.0 mm x 15.0 mm

SAR (1g) = 0.373 W/kg; SAR (10g) = 0.257 W/kg;

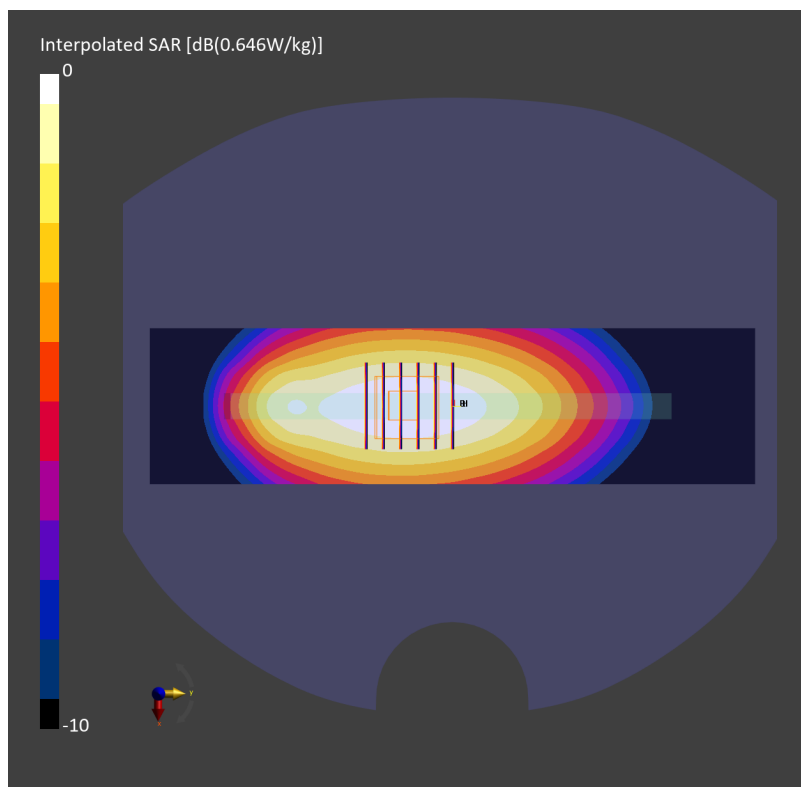
Zoom Scan (30.0 mm x 30.0 mm x 30.0 mm): Measurement Grid: 6.0 mm x 6.0 mm x 1.5 mm

Power Drift = 0.05 dB

SAR (1g) = 0.383 W/kg; SAR (8g) = 0.274 W/kg; SAR (10g) = 0.261 W/kg

Smallest distance from peaks to all points 3 dB below = > 15.0 mm

Ratio of SAR at M2 to SAR at M1 = 81.8 %



#54_FR1 n7_50M_BPSK_1_1_Right Side_10mm_Ch507000

Communication System: 5G NR; Frequency: 2535.000 MHz

Medium: HSL_2600_240303 Medium parameters used: $f=2535.000$ MHz; $\sigma=1.92$ S/m; $\epsilon_r=38.5$

Ambient Temperature: 23.1°C; Liquid Temperature: 22.1°C

DASY6 Configuration:

- Probe: EX3DV4 - SN7694; ConvF(7.47, 7.47, 7.47); Calibrated: 2023-10-26
- Sensor-Surface: 1.4 mm
- Electronics: DAE4ip Sn1800; Calibrated: 2023-05-31
- Phantom: Twin-SAM V8.0 (30deg probe tilt); Serial: 2144; Section: Flat
- Measurement Software: 16.2.4.2524
- UID: 5G NR FR1 FDD, 10935-AAD

Area Scan (54.0 mm x 200.0 mm): Measurement Grid: 9.0 mm x 10.0 mm

SAR (1g) = 0.822 W/kg; SAR (10g) = 0.413 W/kg;

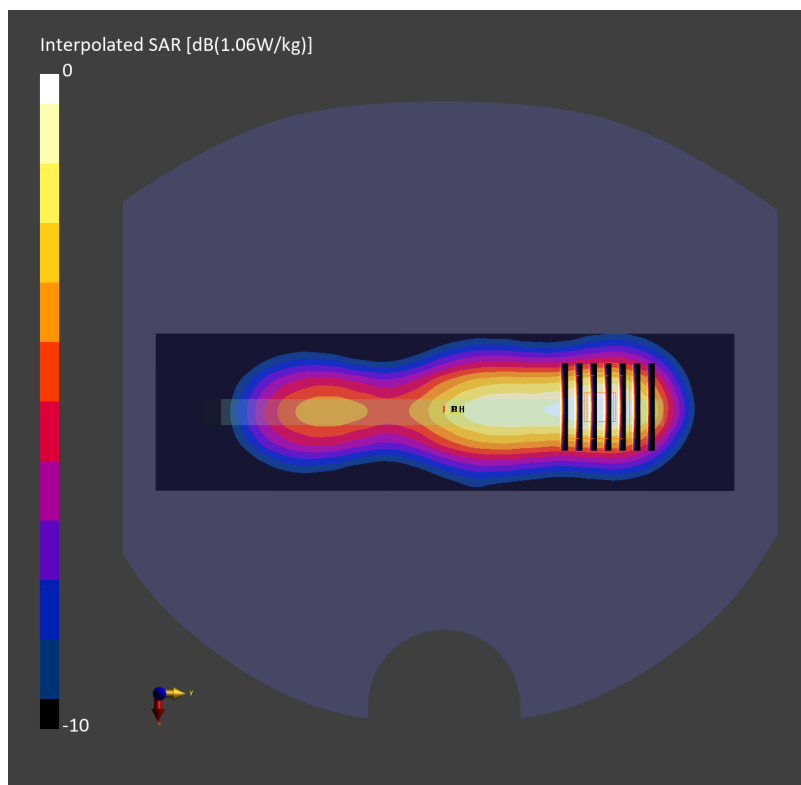
Zoom Scan (30.0 mm x 30.0 mm x 30.0 mm): Measurement Grid: 5.0 mm x 5.0 mm x 1.5 mm

Power Drift = -0.02 dB

SAR (1g) = 0.842 W/kg; SAR (8g) = 0.461 W/kg; SAR (10g) = 0.423 W/kg

Smallest distance from peaks to all points 3 dB below = 11.0 mm

Ratio of SAR at M2 to SAR at M1 = 79.0 %



#55_FR1 n12_15M_BPSK_1_1_Left Side_10mm_Ch141500

Communication System: 5G NR; Frequency: 707.500 MHz

Medium: HSL_750_240216 Medium parameters used: $f=707.500$ MHz; $\sigma=0.879$ S/m; $\epsilon_r=43.3$

Ambient Temperature: 23.6°C; Liquid Temperature: 22.6°C

DASY6 Configuration:

- Probe: EX3DV4 - SN7694; ConvF(9.84, 9.84, 9.84); Calibrated: 2023-10-26
- Sensor-Surface: 1.4 mm
- Electronics: DAE4ip Sn1800; Calibrated: 2023-05-31
- Phantom: Twin-SAM V8.0 (30deg probe tilt); Serial: 2144; Section: Flat
- Measurement Software: 16.2.4.2524
- UID: 5G NR FR1 FDD, 10930-AAC

Area Scan (54.0 mm x 210.0 mm): Measurement Grid: 9.0 mm x 15.0 mm

SAR (1g) = 0.468 W/kg; SAR (10g) = 0.321 W/kg;

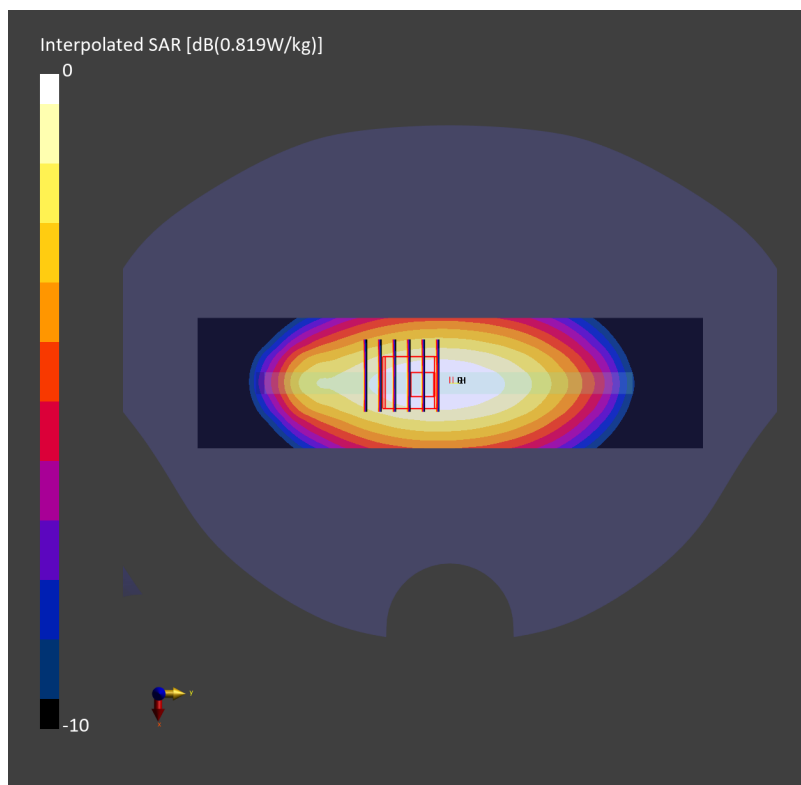
Zoom Scan (30.0 mm x 30.0 mm x 30.0 mm): Measurement Grid: 6.0 mm x 6.0 mm x 1.5 mm

Power Drift = 0.00 dB

SAR (1g) = 0.481 W/kg; SAR (8g) = 0.336 W/kg; SAR (10g) = 0.320 W/kg

Smallest distance from peaks to all points 3 dB below = 27.3 mm

Ratio of SAR at M2 to SAR at M1 = 81.6 %



#56_FR1 n14_10M_BPSK_1_1_Back_10mm_Ch158600

Communication System: 5G NR; Frequency: 793.000 MHz

Medium: HSL_750_240216 Medium parameters used: $f=793.000$ MHz; $\sigma=0.907$ S/m; $\epsilon_r=42.8$

Ambient Temperature: 23.6°C; Liquid Temperature: 22.6°C

DASY6 Configuration:

- Probe: EX3DV4 - SN7694; ConvF(9.84, 9.84, 9.84); Calibrated: 2023-10-26
- Sensor-Surface: 1.4 mm
- Electronics: DAE4ip Sn1800; Calibrated: 2023-05-31
- Phantom: Twin-SAM V8.0 (30deg probe tilt); Serial: 2144; Section: Flat
- Measurement Software: 16.2.4.2524
- UID: 5G NR FR1 FDD, 10929-AAD

Area Scan (120.0 mm x 210.0 mm): Measurement Grid: 15.0 mm x 15.0 mm

SAR (1g) = 0.427 W/kg; SAR (10g) = 0.291 W/kg;

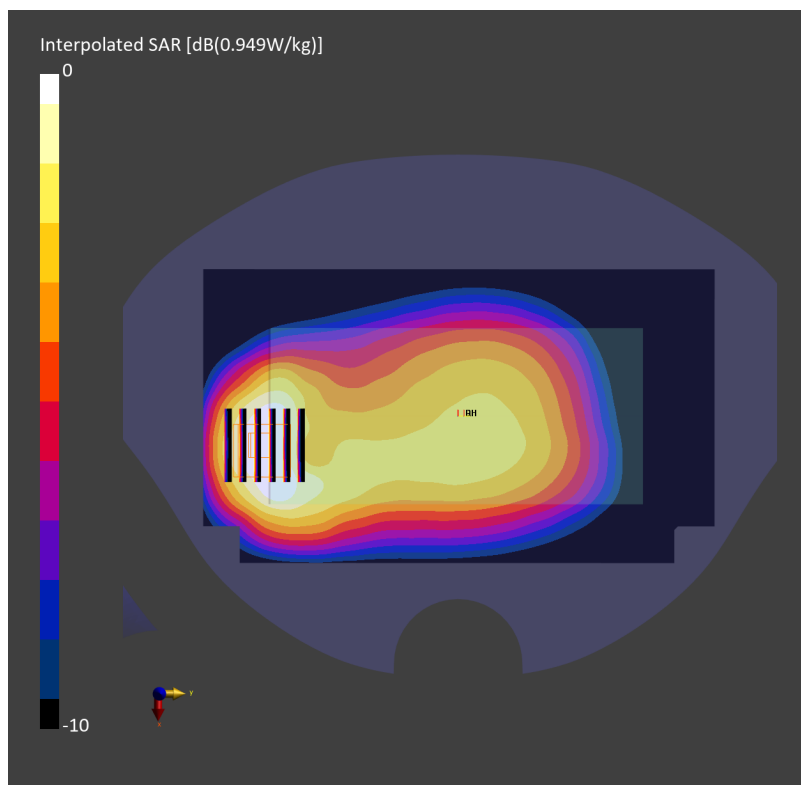
Zoom Scan (30.0 mm x 30.0 mm x 30.0 mm): Measurement Grid: 6.0 mm x 6.0 mm x 1.5 mm

Power Drift = -0.02 dB

SAR (1g) = 0.475 W/kg; SAR (8g) = 0.289 W/kg; SAR (10g) = 0.270 W/kg

Smallest distance from peaks to all points 3 dB below = 10.9 mm

Ratio of SAR at M2 to SAR at M1 = 77.1 %



#57_FR1 n25_40M_BPSK_1_1_Top Side_10mm_Ch376500

Communication System: 5G NR ; Frequency: 1882.500 MHz

Medium: HSL_1900_240309 Medium parameters used: $f=1882.500$ MHz; $\sigma=1.41$ S/m; $\epsilon_r=39.1$

Ambient Temperature: 23.4°C; Liquid Temperature: 22.4°C

DASY6 Configuration:

- Probe: EX3DV4 - SN7700; ConvF(7.7, 7.85, 7.85); Calibrated: 2024-02-01
- Sensor-Surface: 1.4 mm
- Electronics: DAE4 Sn656; Calibrated: 2024-01-18
- Phantom: Twin-SAM V8.0 (30deg probe tilt); Serial: 2145; Section: Flat
- Measurement Software: 16.2.4.2524
- UID: 5G NR FR1 FDD, 10934-AAC

Area Scan (54.0 mm x 120.0 mm): Measurement Grid: 9.0 mm x 15.0 mm

SAR (1g) = 0.659 W/kg; SAR (10g) = 0.314 W/kg;

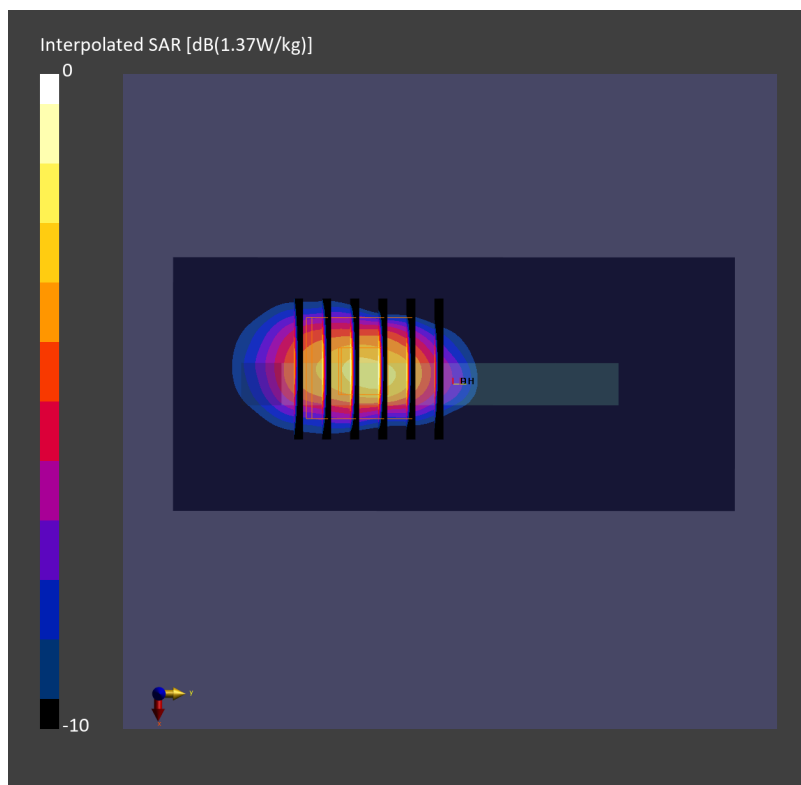
Zoom Scan (30.0 mm x 30.0 mm x 30.0 mm): Measurement Grid: 6.0 mm x 6.0 mm x 1.5 mm

Power Drift = -0.01 dB

SAR (1g) = 0.693 W/kg; SAR (8g) = 0.371 W/kg; SAR (10g) = 0.336 W/kg

Smallest distance from peaks to all points 3 dB below = 7.2 mm

Ratio of SAR at M2 to SAR at M1 = 83.0 %



#58_FR1 n26_20M_BPSK_1_1_Back_10mm_Ch166300

Communication System: 5G NR; Frequency: 831.500 MHz

Medium: HSL_850_240214 Medium parameters used: $f=831.500$ MHz; $\sigma=0.922$ S/m; $\epsilon_r=42.5$

Ambient Temperature: 23.4°C; Liquid Temperature: 22.4°C

DASY6 Configuration:

- Probe: EX3DV4 - SN7694; ConvF(9.48, 9.48, 9.48); Calibrated: 2023-10-26
- Sensor-Surface: 1.4 mm
- Electronics: DAE4ip Sn1800; Calibrated: 2023-05-31
- Phantom: Twin-SAM V8.0 (30deg probe tilt); Serial: 2144; Section: Flat
- Measurement Software: 16.2.4.2524
- UID: 5G NR FR1 FDD, 10931-AAC

Area Scan (120.0 mm x 210.0 mm): Measurement Grid: 15.0 mm x 15.0 mm

SAR (1g) = 0.544 W/kg; SAR (10g) = 0.368 W/kg;

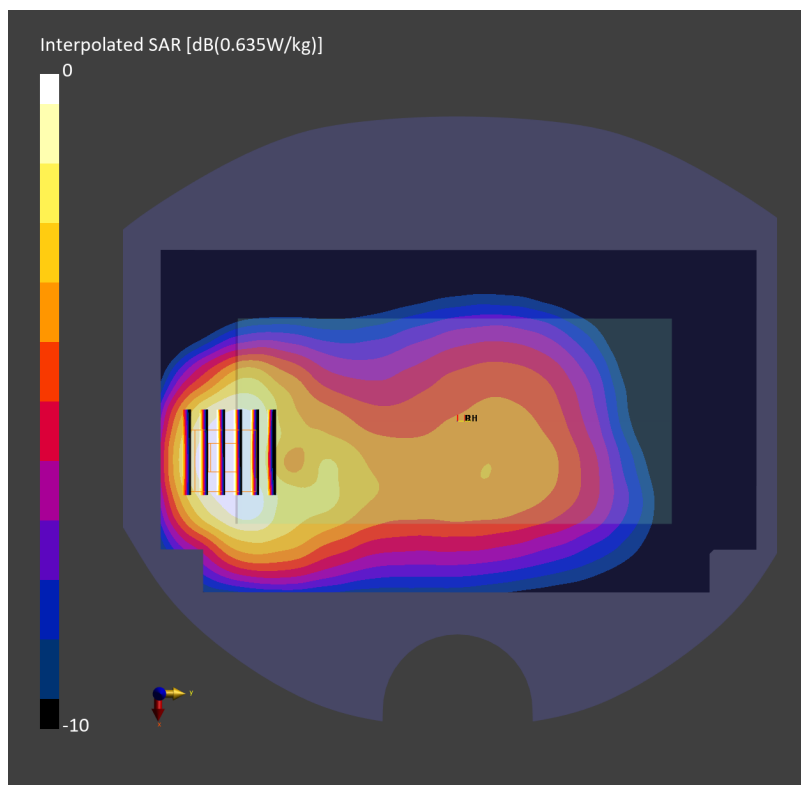
Zoom Scan (30.0 mm x 30.0 mm x 30.0 mm): Measurement Grid: 6.0 mm x 6.0 mm x 1.5 mm

Power Drift = -0.06 dB

SAR (1g) = 0.620 W/kg; SAR (8g) = 0.362 W/kg; SAR (10g) = 0.337 W/kg

Smallest distance from peaks to all points 3 dB below = 9.6 mm

Ratio of SAR at M2 to SAR at M1 = 81.3 %



#59_FR1 n30_10M_BPSK_1_1_Bottom Side_10mm_Ch462000

Communication System: 5G NR; Frequency: 2310.000 MHz

Medium: HSL_2300_240314 Medium parameters used: $f=2310.000$ MHz; $\sigma=1.66$ S/m; $\epsilon_r=39.6$

Ambient Temperature: 23.4°C; Liquid Temperature: 22.4°C

DASY6 Configuration:

- Probe: EX3DV4 - SN7700; ConvF(7.36, 7.47, 7.48); Calibrated: 2024-02-01
- Sensor-Surface: 1.4 mm
- Electronics: DAE4 Sn656; Calibrated: 2024-01-18
- Phantom: Twin-SAM V8.0 (30deg probe tilt); Serial: 2145; Section: Flat
- Measurement Software: 16.2.4.2524
- UID: 5G NR FR1 FDD, 10929-AAD

Area Scan (54.0 mm x 120.0 mm): Measurement Grid: 9.0 mm x 10.0 mm

SAR (1g) = 0.583 W/kg; SAR (10g) = 0.278 W/kg;

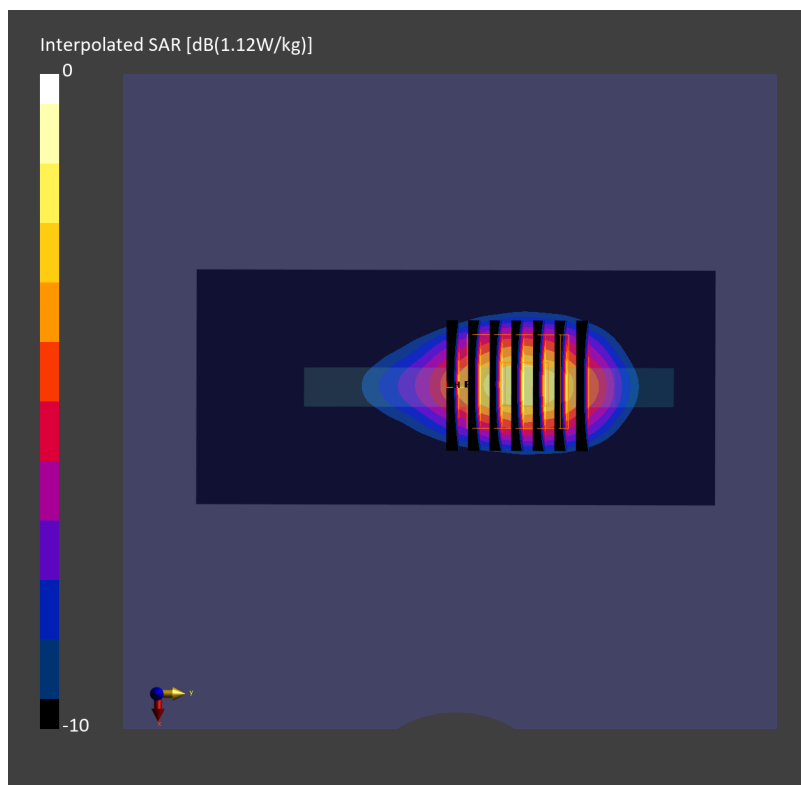
Zoom Scan (30.0 mm x 30.0 mm x 30.0 mm): Measurement Grid: 5.0 mm x 5.0 mm x 1.5 mm

Power Drift = -0.05 dB

SAR (1g) = 0.585 W/kg; SAR (8g) = 0.313 W/kg; SAR (10g) = 0.285 W/kg

Smallest distance from peaks to all points 3 dB below = 9.0 mm

Ratio of SAR at M2 to SAR at M1 = 82.2 %



#60_FR1 n41_100M_BPSK_1_1_Bottom Side_10mm_Ch518598

Communication System: 5G NR ; Frequency: 2592.990 MHz

Medium: HSL_2600_240228 Medium parameters used: $f=2592.990$ MHz; $\sigma=1.98$ S/m; $\epsilon_r=38.3$

Ambient Temperature: 23.8°C; Liquid Temperature: 22.8°C

DASY6 Configuration:

- Probe: EX3DV4 - SN7700; ConvF(7.33, 7.44, 7.46); Calibrated: 2024-02-01
- Sensor-Surface: 1.4 mm
- Electronics: DAE4 Sn656; Calibrated: 2024-01-18
- Phantom: Twin-SAM V8.0 (30deg probe tilt); Serial: 2145; Section: Flat
- Measurement Software: 16.2.4.2524
- UID: 5G NR FR1 TDD, 10866-AAF

Area Scan (54.0 mm x 120.0 mm): Measurement Grid: 9.0 mm x 10.0 mm

SAR (1g) = 0.509 W/kg; SAR (10g) = 0.243 W/kg;

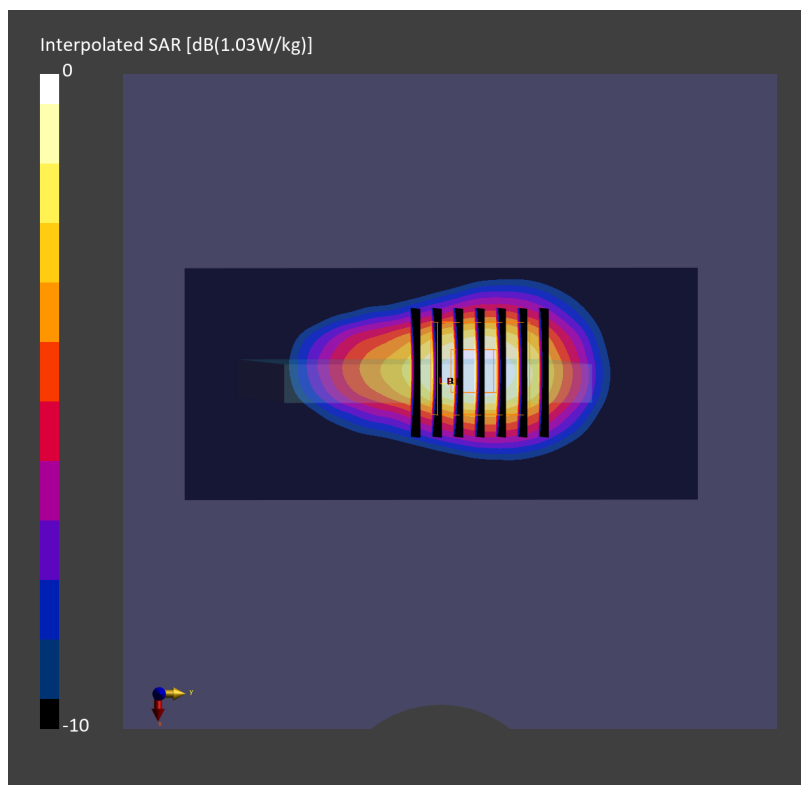
Zoom Scan (30.0 mm x 30.0 mm x 30.0 mm): Measurement Grid: 5.0 mm x 5.0 mm x 1.5 mm

Power Drift = -0.03 dB

SAR (1g) = 0.524 W/kg; SAR (8g) = 0.278 W/kg; SAR (10g) = 0.253 W/kg

Smallest distance from peaks to all points 3 dB below = 9.9 mm

Ratio of SAR at M2 to SAR at M1 = 81.2 %



#61_FR1 n48_20M_BPSK_1_1_Right Side_10mm_Ch646000

Communication System: 5G NR; Frequency: 3690 MHz

Medium: HSL_3700_240320 Medium parameters used: $f=3689.995$ MHz; $\sigma=3.16$ S/m; $\epsilon_r=37.4$

Ambient Temperature: 23.3°C; Liquid Temperature: 22.3°C

DASY6 Configuration:

- Probe: EX3DV4 - SN7793; ConvF(6.14, 6.36, 6.41); Calibrated: 2024-03-01
- Sensor-Surface: 1.4 mm
- Electronics: DAE4 Sn1707; Calibrated: 2023-12-06
- Phantom: Twin-SAM V8.0 (30deg probe tilt); Serial: 2127; Section: Flat
- Measurement Software: 16.2.4.2524
- UID: 5G NR FR1 TDD, 10900-AAC

Area Scan (54.0 mm x 200.0 mm): Measurement Grid: 9.0 mm x 10.0 mm

SAR (1g) = 0.500 W/kg; SAR (10g) = 0.208 W/kg;

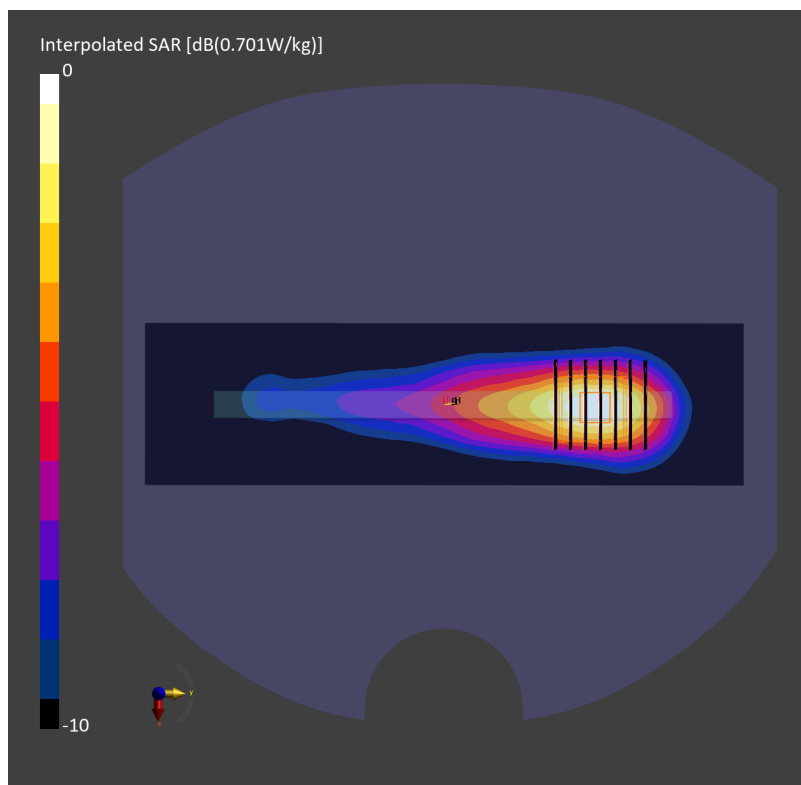
Zoom Scan (28.0 mm x 28.0 mm x 28.0 mm): Measurement Grid: 5.0 mm x 5.0 mm x 1.4 mm

Power Drift = -0.05 dB

SAR (1g) = 0.520 W/kg; SAR (8g) = 0.241 W/kg; SAR (10g) = 0.217 W/kg

Smallest distance from peaks to all points 3 dB below = 9.0 mm

Ratio of SAR at M2 to SAR at M1 = 75.7 %



#62_FR1 n66_40M_BPSK_1_1_Bottom Side_10mm_Ch349000

Communication System: 5G NR; Frequency: 1745.000 MHz

Medium: HSL_1750_240312 Medium parameters used: $f=1745.000$ MHz; $\sigma=1.36$ S/m; $\epsilon_r=40.8$

Ambient Temperature: 23.2°C; Liquid Temperature: 22.2°C

DASY6 Configuration:

- Probe: EX3DV4 - SN7700; ConvF(8.14, 8.24, 8.22); Calibrated: 2024-02-01
- Sensor-Surface: 1.4 mm
- Electronics: DAE4 Sn656; Calibrated: 2024-01-18
- Phantom: Twin-SAM V8.0 (30deg probe tilt); Serial: 2145; Section: Flat
- Measurement Software: 16.2.4.2524
- UID: 5G NR FR1 FDD, 10934-AAC

Area Scan (54.0 mm x 120.0 mm): Measurement Grid: 9.0 mm x 15.0 mm

SAR (1g) = 0.601 W/kg; SAR (10g) = 0.313 W/kg;

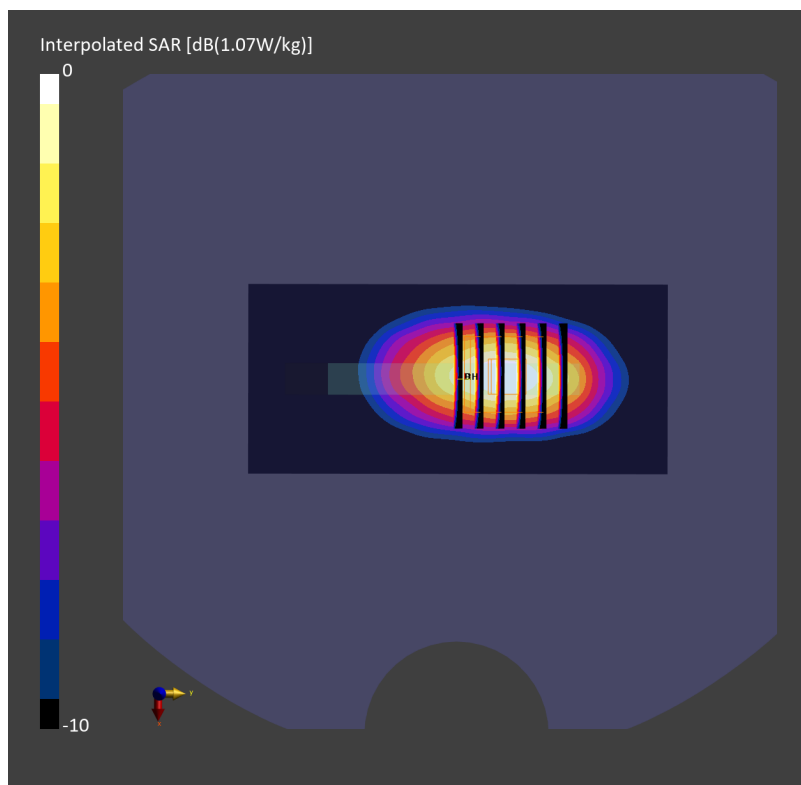
Zoom Scan (30.0 mm x 30.0 mm x 30.0 mm): Measurement Grid: 6.0 mm x 6.0 mm x 1.5 mm

Power Drift = -0.03 dB

SAR (1g) = 0.618 W/kg; SAR (8g) = 0.359 W/kg; SAR (10g) = 0.331 W/kg

Smallest distance from peaks to all points 3 dB below = 9.6 mm

Ratio of SAR at M2 to SAR at M1 = 84.6 %



#63_FR1 n70_15M_BPSK_36_22_Bottom Side_10mm_Ch340500

Communication System: 5G NR; Frequency: 1702.500 MHz

Medium: HSL_1750_240312 Medium parameters used: $f=1702.500$ MHz; $\sigma=1.32$ S/m; $\epsilon_r=41.0$

Ambient Temperature: 23.2°C; Liquid Temperature: 22.2°C

DASY6 Configuration:

- Probe: EX3DV4 - SN7700; ConvF(8.14, 8.24, 8.22); Calibrated: 2024-02-01
- Sensor-Surface: 1.4 mm
- Electronics: DAE4 Sn656; Calibrated: 2024-01-18
- Phantom: Twin-SAM V8.0 (30deg probe tilt); Serial: 2145; Section: Flat
- Measurement Software: 16.2.4.2524
- UID: 5G NR FR1 FDD, 10938-AAC

Area Scan (54.0 mm x 120.0 mm): Measurement Grid: 9.0 mm x 15.0 mm

SAR (1g) = 0.633 W/kg; SAR (10g) = 0.332 W/kg;

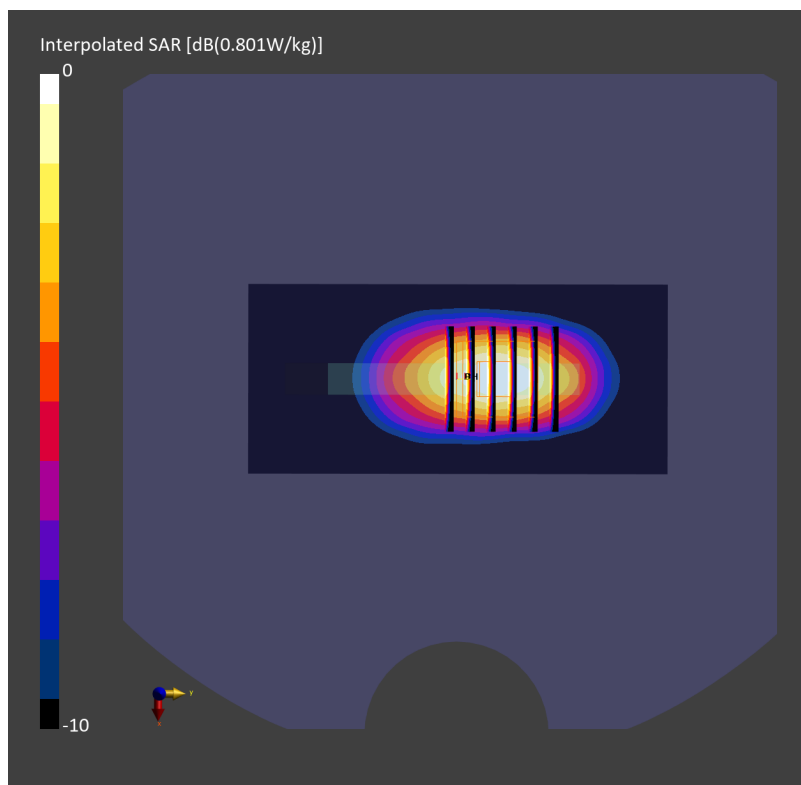
Zoom Scan (30.0 mm x 30.0 mm x 30.0 mm): Measurement Grid: 6.0 mm x 6.0 mm x 1.5 mm

Power Drift = -0.01 dB

SAR (1g) = 0.651 W/kg; SAR (8g) = 0.378 W/kg; SAR (10g) = 0.348 W/kg

Smallest distance from peaks to all points 3 dB below = 9.6 mm

Ratio of SAR at M2 to SAR at M1 = 84.8 %



#64_FR1 n71_20M_BPSK_50_28_Left Side_10mm_Ch136100

Communication System: 5G NR; Frequency: 680.500 MHz

Medium: HSL_750_240221 Medium parameters used: $f=680.500$ MHz; $\sigma=0.870$ S/m; $\epsilon_r=43.4$

Ambient Temperature: 23.6°C; Liquid Temperature: 22.6°C

DASY6 Configuration:

- Probe: EX3DV4 - SN7694; ConvF(9.84, 9.84, 9.84); Calibrated: 2023-10-26
- Sensor-Surface: 1.4 mm
- Electronics: DAE4ip Sn1800; Calibrated: 2023-05-31
- Phantom: Twin-SAM V8.0 (30deg probe tilt); Serial: 2144; Section: Flat
- Measurement Software: 16.2.4.2524
- UID: 5G NR FR1 FDD, 10939-AAC

Area Scan (54.0 mm x 210.0 mm): Measurement Grid: 9.0 mm x 15.0 mm

SAR (1g) = 0.415 W/kg; SAR (10g) = 0.285 W/kg;

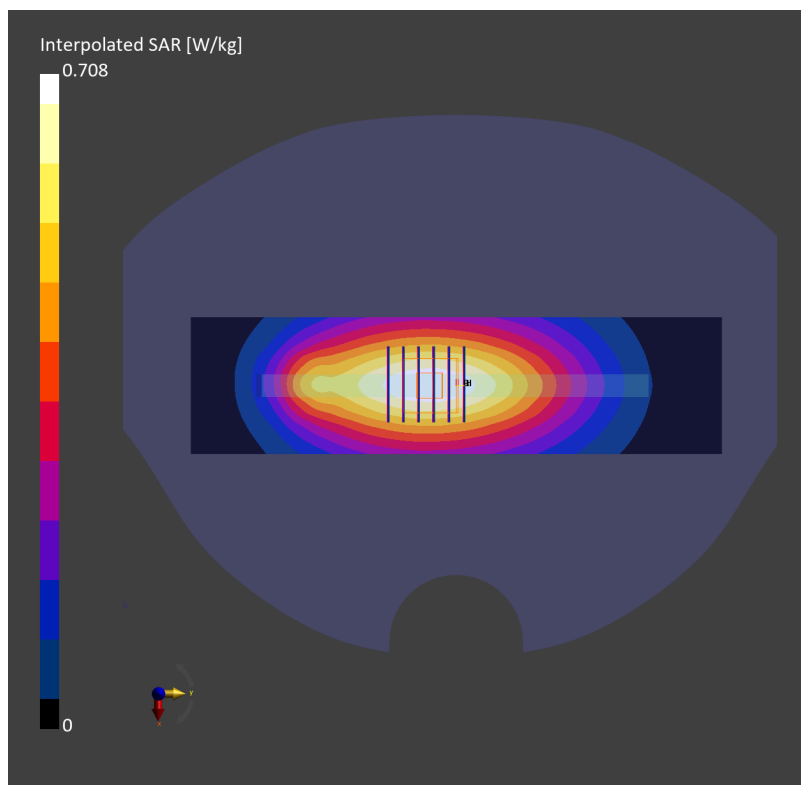
Zoom Scan (30.0 mm x 30.0 mm x 30.0 mm): Measurement Grid: 6.0 mm x 6.0 mm x 1.5 mm

Power Drift = -0.04 dB

SAR (1g) = 0.424 W/kg; SAR (8g) = 0.303 W/kg; SAR (10g) = 0.289 W/kg

Smallest distance from peaks to all points 3 dB below = > 15.0 mm

Ratio of SAR at M2 to SAR at M1 = 82.6 %



#65_FR1 n77_100M_BPSK_1_1_Top Side_10mm_Ch633332

Communication System: 5G NR; Frequency: 3499.980 MHz

Medium: HSL_3500_240412 Medium parameters used: $f=3499.980$ MHz; $\sigma=2.95$ S/m; $\epsilon_r=37.1$

Ambient Temperature: 23.5°C; Liquid Temperature: 22.5°C

DASY6 Configuration:

- Probe: EX3DV4 - SN7590; ConvF(7.08, 6.92, 6.97); Calibrated: 2024-03-19
- Sensor-Surface: 1.4 mm
- Electronics: DAE4 Sn699; Calibrated: 2024-02-13
- Phantom: Twin-SAM V8.0 (30deg probe tilt); Serial: 2126; Section: Flat
- Measurement Software: 16.2.4.2524
- UID: 5G NR FR1 TDD, 10866-AAF

Area Scan (54.0 mm x 120.0 mm): Measurement Grid: 9.0 mm x 10.0 mm

SAR (1g) = 0.473 W/kg; SAR (10g) = 0.193 W/kg;

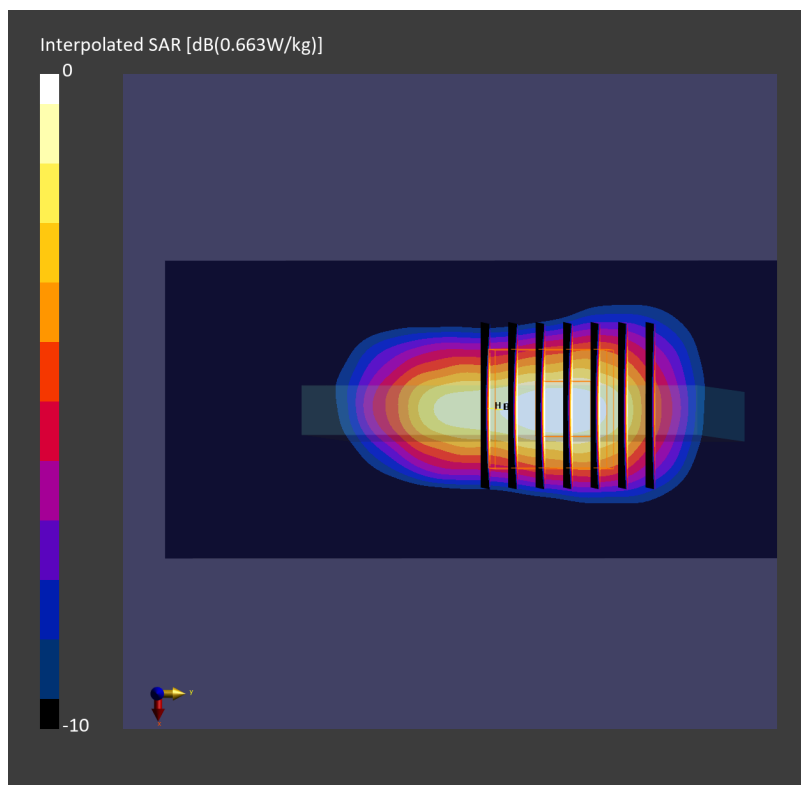
Zoom Scan (28.0 mm x 28.0 mm x 28.0 mm): Measurement Grid: 5.0 mm x 5.0 mm x 1.4 mm

Power Drift = -0.01 dB

SAR (1g) = 0.501 W/kg; SAR (8g) = 0.231 W/kg; SAR (10g) = 0.207 W/kg

Smallest distance from peaks to all points 3 dB below = 8.0 mm

Ratio of SAR at M2 to SAR at M1 = 78.7 %



#66_WLAN2.4GHz_802.11g 6Mbps_Left Side_10mm_Ch1

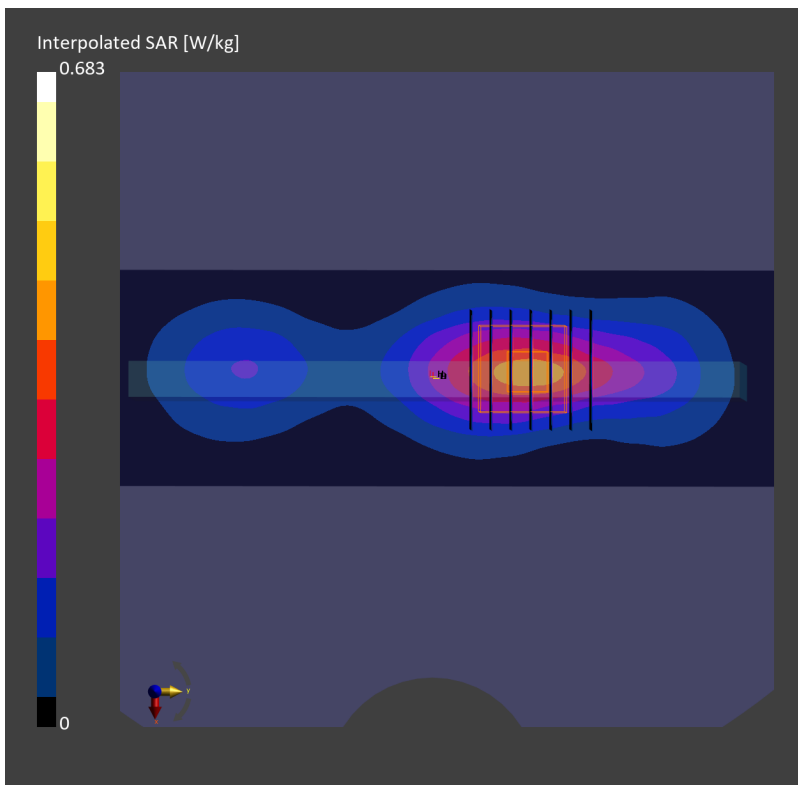
Communication System: IEEE 802.11g WiFi 2.4 GHz; Frequency: 2412.000 MHz
Medium: HSL_2450_240314 Medium parameters used: $f=2412.000$ MHz; $\sigma=1.78$ S/m; $\epsilon_r=40.2$
Ambient Temperature: 23.5°C; Liquid Temperature: 22.5°C

DASY6 Configuration:

- Probe: EX3DV4 - SN7785; ConvF(6.88, 6.53, 6.42); Calibrated: 2023-11-23
- Sensor-Surface: 1.4 mm
- Electronics: DAE4 Sn1707; Calibrated: 2023-12-06
- Phantom: Twin-SAM V8.0 (30deg probe tilt); Serial: 2127; Section: Flat
- Measurement Software: 16.2.4.2524
- UID: WLAN, 10418-AAA

Area Scan (54.0 mm x 200.0 mm): Measurement Grid: 9.0 mm x 10.0 mm
SAR (1g) = 0.336 W/kg; SAR (10g) = 0.169 W/kg;

Zoom Scan (30.0 mm x 30.0 mm x 30.0 mm): Measurement Grid: 5.0 mm x 5.0 mm x 1.5 mm
Power Drift = -0.07 dB
SAR (1g) = 0.352 W/kg; SAR (8g) = 0.196 W/kg; SAR (10g) = 0.179 W/kg
Smallest distance from peaks to all points 3 dB below = 9.9 mm
Ratio of SAR at M2 to SAR at M1 = 80.6 %



#67_WLAN5GHz_802.11n-HT40 MCS0_Left Side_10mm_Ch46

Communication System: IEEE 802.11n; Frequency: 5230.000 MHz

Medium: HSL_5G_240316 Medium parameters used: $f=5230.000$ MHz; $\sigma=4.63$ S/m; $\epsilon_r=36.0$

Ambient Temperature: 23.5°C; Liquid Temperature: 22.5°C

DASY6 Configuration:

- Probe: EX3DV4 - SN7793; ConvF(4.89, 5.03, 5.05); Calibrated: 2024-03-01
- Sensor-Surface: 1.4 mm
- Electronics: DAE4 Sn1707; Calibrated: 2023-12-06
- Phantom: Twin-SAM V8.0 (30deg probe tilt); Serial: 2127; Section: Flat
- Measurement Software: 16.2.4.2524
- UID: WLAN, 10599-AAD

Area Scan (54.0 mm x 200.0 mm): Measurement Grid: 9.0 mm x 10.0 mm

SAR (1g) = 0.371 W/kg; SAR (10g) = 0.146 W/kg;

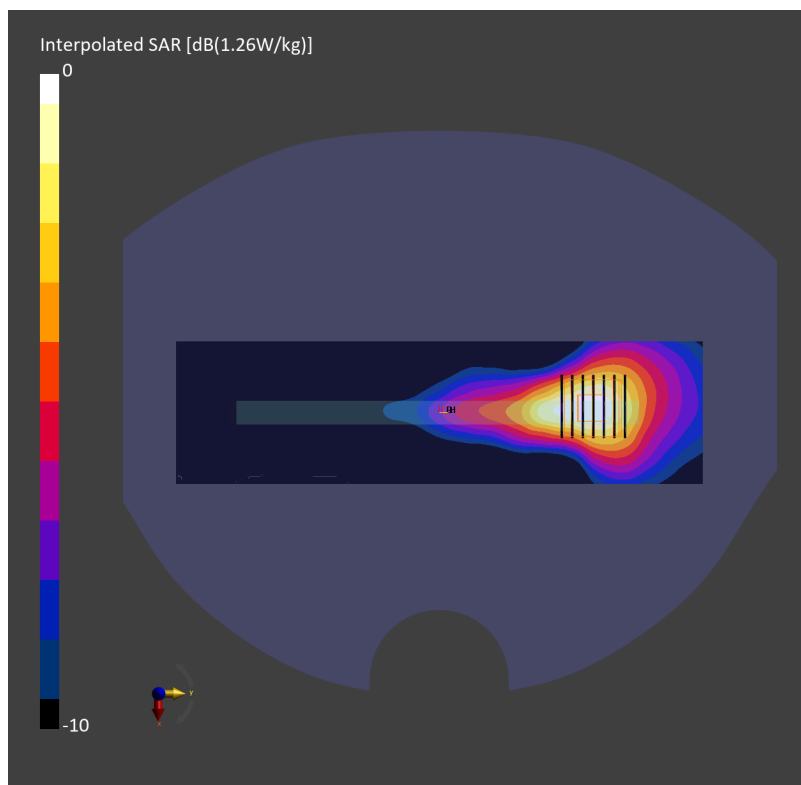
Zoom Scan (22.0 mm x 22.0 mm x 22.0 mm): Measurement Grid: 4.0 mm x 4.0 mm x 1.4 mm

Power Drift = -0.10 dB

SAR (1g) = 0.382 W/kg; SAR (8g) = 0.165 W/kg; SAR (10g) = 0.148 W/kg

Smallest distance from peaks to all points 3 dB below = 10.1 mm

Ratio of SAR at M2 to SAR at M1 = 65.4 %



#68_WLAN5GHz_802.11ac-VHT80 MCS0_Left Side_10mm_Ch155

Communication System: IEEE 802.11ac WiFi; Frequency: 5775.000 MHz

Medium: HSL_5G_240316 Medium parameters used: $f = 5775.000$ MHz; $\sigma = 5.15$ S/m; $\epsilon_r = 35.4$

Ambient Temperature: 23.5°C; Liquid Temperature: 22.5°C

DASY6 Configuration:

- Probe: EX3DV4 - SN7793; ConvF(4.37, 4.42, 4.46); Calibrated: 2024-03-01
- Sensor-Surface: 1.4 mm
- Electronics: DAE4 Sn1707; Calibrated: 2023-12-06
- Phantom: Twin-SAM V8.0 (30deg probe tilt); Serial: 2127; Section: Flat
- Measurement Software: 16.2.4.2524
- UID: WLAN, 10544-AAD

Area Scan (54.0 mm x 200.0 mm): Measurement Grid: 9.0 mm x 10.0 mm

SAR (1g) = 0.340 W/kg; SAR (10g) = 0.132 W/kg;

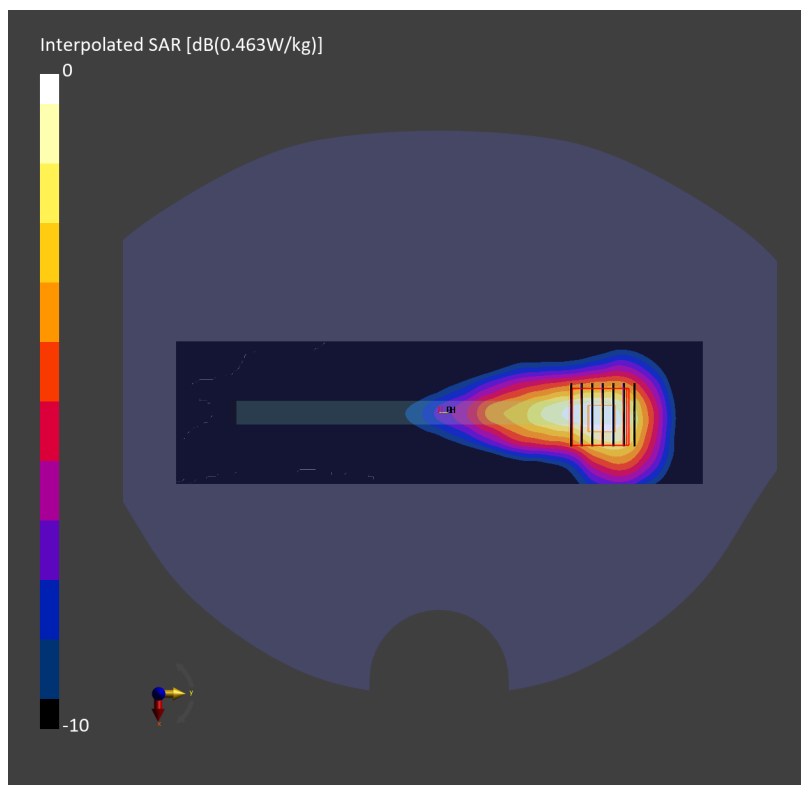
Zoom Scan (22.0 mm x 22.0 mm x 22.0 mm): Measurement Grid: 4.0 mm x 4.0 mm x 1.4 mm

Power Drift = -0.02 dB

SAR (1g) = 0.332 W/kg; SAR (8g) = 0.138 W/kg; SAR (10g) = 0.122 W/kg

Smallest distance from peaks to all points 3 dB below = 10.8 mm

Ratio of SAR at M2 to SAR at M1 = 59.2 %



#70_Bluetooth_1Mbps_Left Side_10mm_Ch39

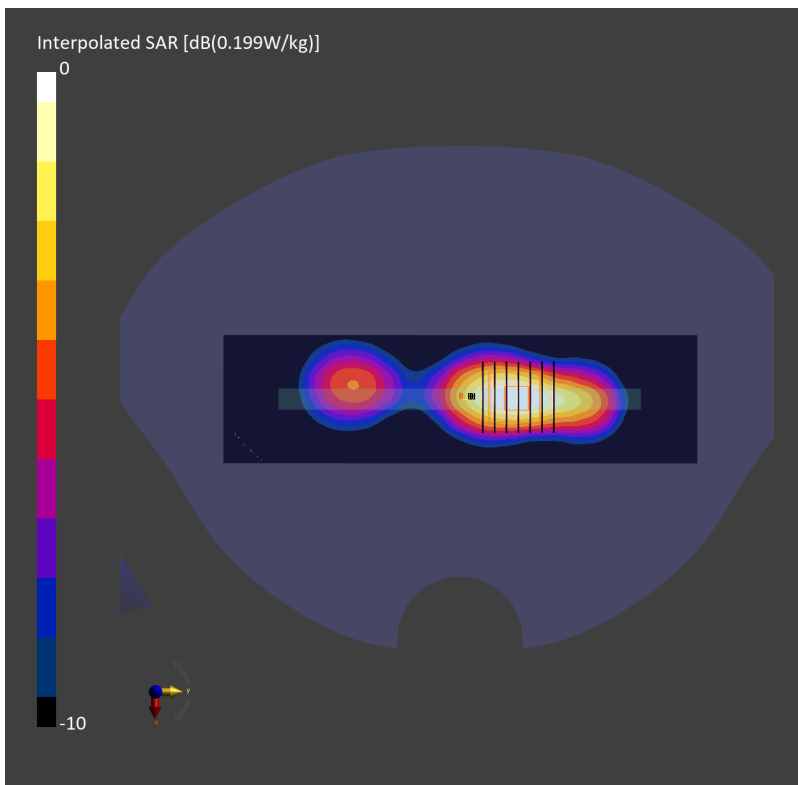
Communication System: IEEE 802.15.1 Bluetooth; Frequency: 2441.000 MHz; Duty Cycle: 1:1
Medium: HSL_2450_240320 Medium parameters used: $f=2441.000$ MHz; $\sigma=1.77$ S/m; $\epsilon_r=39.1$
Ambient Temperature: 23.5°C; Liquid Temperature: 22.5°C

DASY6 Configuration:

- Probe: EX3DV4 - SN7700; ConvF(7.72, 7.83, 7.84); Calibrated: 2024-02-01
- Sensor-Surface: 1.4 mm
- Electronics: DAE4 Sn656; Calibrated: 2024-01-18
- Phantom: Twin-SAM V8.0 (30deg probe tilt); Serial: 2145; Section: Flat
- Measurement Software: 16.2.4.2524
- UID: Bluetooth, 10032-CAA

Area Scan (54.0 mm x 200.0 mm): Measurement Grid: 9.0 mm x 10.0 mm
SAR (1g) = 0.154 W/kg; SAR (10g) = 0.077 W/kg;

Zoom Scan (30.0 mm x 30.0 mm x 30.0 mm): Measurement Grid: 5.0 mm x 5.0 mm x 1.5 mm
Power Drift = 0.01 dB
SAR (1g) = 0.162 W/kg; SAR (8g) = 0.089 W/kg; SAR (10g) = 0.081 W/kg
Smallest distance from peaks to all points 3 dB below = 9.5 mm
Ratio of SAR at M2 to SAR at M1 = 81.5 %



#71_Thread_250K_Left Side_10mm_Ch25

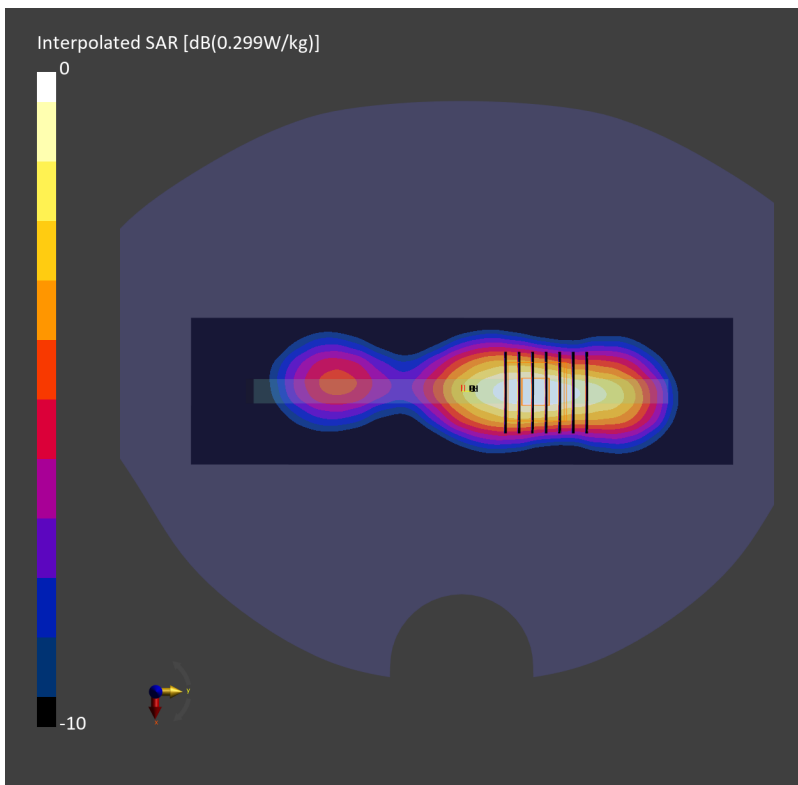
Communication System: IEEE 802.15.1 ; Frequency: 2475.000 MHz;Duty Cycle: 1:1
Medium: HSL_2450_240320 Medium parameters used: $f=2475.000$ MHz; $\sigma=1.81$ S/m; $\epsilon_r=39.0$
Ambient Temperature: 23.5°C; Liquid Temperature: 22.5°C

DASY6 Configuration:

- Probe: EX3DV4 - SN7700; ConvF(7.72, 7.83, 7.84); Calibrated: 2024-02-01
- Sensor-Surface: 1.4 mm
- Electronics: DAE4 Sn656; Calibrated: 2024-01-18
- Phantom: Twin-SAM V8.0 (30deg probe tilt); Serial: 2145; Section: Flat
- Measurement Software: 16.2.4.2524
- UID: Bluetooth, 10032-CAA

Area Scan (54.0 mm x 200.0 mm): Measurement Grid: 9.0 mm x 10.0 mm
SAR (1g) = 0.151 W/kg; SAR (10g) = 0.076 W/kg;

Zoom Scan (30.0 mm x 30.0 mm x 30.0 mm): Measurement Grid: 5.0 mm x 5.0 mm x 1.5 mm
Power Drift = 0.07 dB
SAR (1g) = 0.154 W/kg; SAR (8g) = 0.085 W/kg; SAR (10g) = 0.078 W/kg
Smallest distance from peaks to all points 3 dB below = 10.0 mm
Ratio of SAR at M2 to SAR at M1 = 82.3 %



#72_GSM850_GPRS (4 Tx slots)_Back_10mm_Ch189

Communication System: GPRS-FDD; Frequency: 836.400 MHz

Medium: HSL_850_240307 Medium parameters used: $f=836.400$ MHz; $\sigma=0.930$ S/m; $\epsilon_r=41.9$

Ambient Temperature: 23.7°C; Liquid Temperature: 22.7°C

DASY6 Configuration:

- Probe: EX3DV4 - SN7694; ConvF(9.48, 9.48, 9.48); Calibrated: 2023-10-26
- Sensor-Surface: 1.4 mm
- Electronics: DAE4ip Sn1800; Calibrated: 2023-05-31
- Phantom: Twin-SAM V8.0 (30deg probe tilt); Serial: 2144; Section: Flat
- Measurement Software: 16.2.4.2524
- UID: GSM, 10028-DAC

Area Scan (120.0 mm x 210.0 mm): Measurement Grid: 15.0 mm x 15.0 mm

SAR (1g) = 0.444 W/kg; SAR (10g) = 0.290 W/kg;

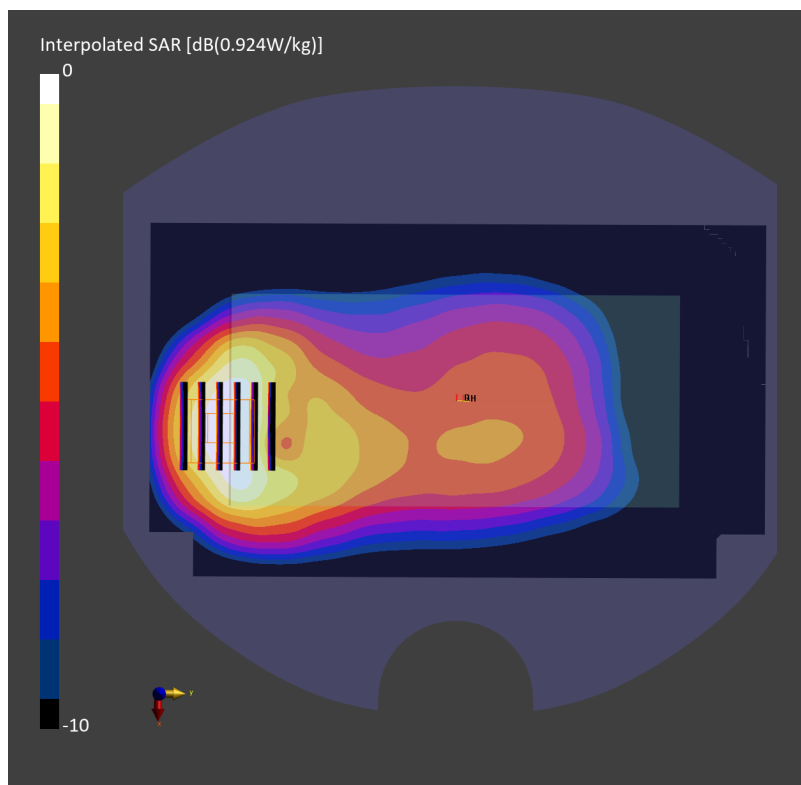
Zoom Scan (30.0 mm x 30.0 mm x 30.0 mm): Measurement Grid: 6.0 mm x 6.0 mm x 1.5 mm

Power Drift = -0.00 dB

SAR (1g) = 0.479 W/kg; SAR (8g) = 0.289 W/kg; SAR (10g) = 0.269 W/kg

Smallest distance from peaks to all points 3 dB below = 10.8 mm

Ratio of SAR at M2 to SAR at M1 = 80.7 %



#73_GSM1900_GPRS (4 Tx slots)_Back_10mm_Ch661

Communication System: GPRS-FDD; Frequency: 1880.000 MHz

Medium: HSL_1900_240308 Medium parameters used: $f=1880.000$ MHz; $\sigma=1.37$ S/m; $\epsilon_r=40.5$

Ambient Temperature: 23.6°C; Liquid Temperature: 22.6°C

DASY6 Configuration:

- Probe: EX3DV4 - SN7700; ConvF(7.7, 7.85, 7.85); Calibrated: 2024-02-01
- Sensor-Surface: 1.4 mm
- Electronics: DAE4 Sn656; Calibrated: 2024-01-18
- Phantom: Twin-SAM V8.0 (30deg probe tilt); Serial: 2145; Section: Flat
- Measurement Software: 16.2.4.2524
- UID: GSM, 10028-DAC

Area Scan (120.0 mm x 210.0 mm): Measurement Grid: 15.0 mm x 15.0 mm

SAR (1g) = 0.485 W/kg; SAR (10g) = 0.252 W/kg;

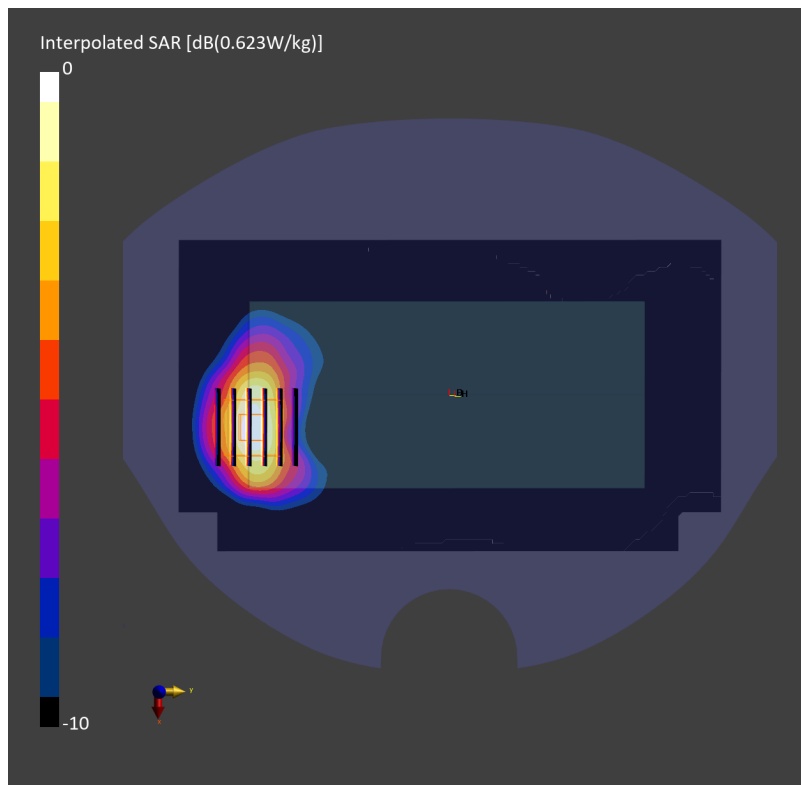
Zoom Scan (30.0 mm x 30.0 mm x 30.0 mm): Measurement Grid: 6.0 mm x 6.0 mm x 1.5 mm

Power Drift = -0.11 dB

SAR (1g) = 0.522 W/kg; SAR (8g) = 0.306 W/kg; SAR (10g) = 0.282 W/kg

Smallest distance from peaks to all points 3 dB below = 10.8 mm

Ratio of SAR at M2 to SAR at M1 = 84.1 %



#74_WCDMA II_RMC 12.2Kbps_Back_10mm_Ch9400

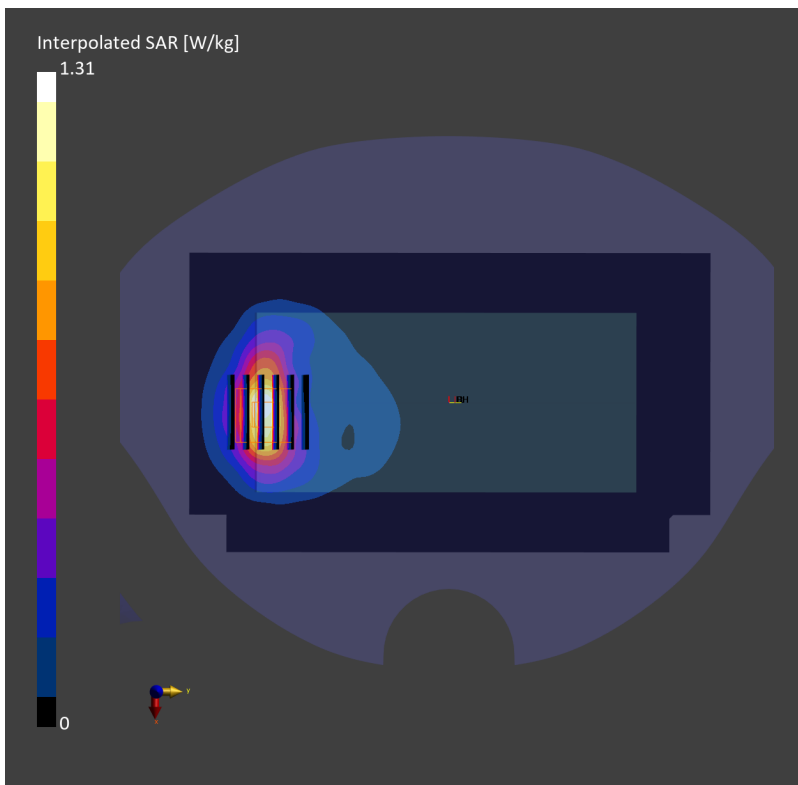
Communication System: UMTS-FDD; Frequency: 1880.000 MHz
Medium: HSL_1900_240309 Medium parameters used: $f=1880.000$ MHz; $\sigma=1.40$ S/m; $\epsilon_r=39.1$
Ambient Temperature: 23.4°C; Liquid Temperature: 22.4°C

DASY6 Configuration:

- Probe: EX3DV4 - SN7700; ConvF(7.7, 7.85, 7.85); Calibrated: 2024-02-01
- Sensor-Surface: 1.4 mm
- Electronics: DAE4 Sn656; Calibrated: 2024-01-18
- Phantom: Twin-SAM V8.0 (30deg probe tilt); Serial: 2145; Section: Flat
- Measurement Software: 16.2.4.2524
- UID: WCDMA, 10011-CAC

Area Scan (120.0 mm x 210.0 mm): Measurement Grid: 15.0 mm x 15.0 mm
SAR (1g) = 0.705 W/kg; SAR (10g) = 0.363 W/kg;

Zoom Scan (30.0 mm x 30.0 mm x 30.0 mm): Measurement Grid: 6.0 mm x 6.0 mm x 1.5 mm
Power Drift = -0.05 dB
SAR (1g) = 0.750 W/kg; SAR (8g) = 0.433 W/kg; SAR (10g) = 0.398 W/kg
Smallest distance from peaks to all points 3 dB below = 9.9 mm
Ratio of SAR at M2 to SAR at M1 = 84.5 %



#75_WCDMA IV_RMC 12.2Kbps_Back_10mm_Ch1413

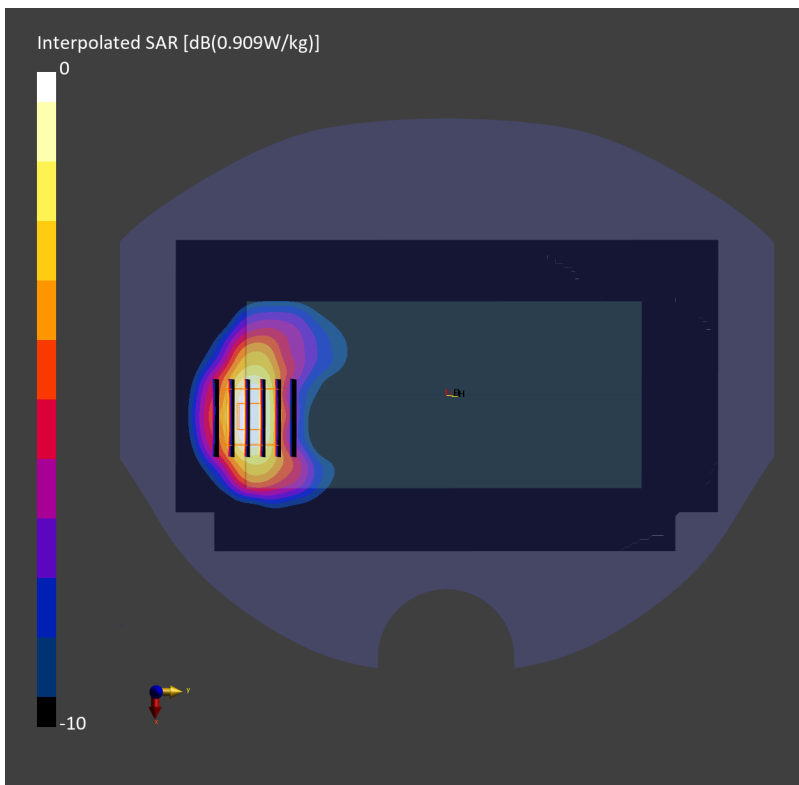
Communication System: UMTS-FDD; Frequency: 1732.600 MHz
Medium: HSL_1750_240308 Medium parameters used: $f=1732.600$ MHz; $\sigma=1.36$ S/m; $\epsilon_r=40.7$
Ambient Temperature: 23.6°C; Liquid Temperature: 22.6°C

DASY6 Configuration:

- Probe: EX3DV4 - SN7700; ConvF(8.14, 8.24, 8.22); Calibrated: 2024-02-01
- Sensor-Surface: 1.4 mm
- Electronics: DAE4 Sn656; Calibrated: 2024-01-18
- Phantom: Twin-SAM V8.0 (30deg probe tilt); Serial: 2145; Section: Flat
- Measurement Software: 16.2.4.2524
- UID: WCDMA, 10011-CAC

Area Scan (120.0 mm x 210.0 mm): Measurement Grid: 15.0 mm x 15.0 mm
SAR (1g) = 0.502 W/kg; SAR (10g) = 0.270 W/kg;

Zoom Scan (30.0 mm x 30.0 mm x 30.0 mm): Measurement Grid: 6.0 mm x 6.0 mm x 1.5 mm
Power Drift = 0.07 dB
SAR (1g) = 0.537 W/kg; SAR (8g) = 0.321 W/kg; SAR (10g) = 0.296 W/kg
Smallest distance from peaks to all points 3 dB below = 10.8 mm
Ratio of SAR at M2 to SAR at M1 = 86.3 %



#76_WCDMA V_RMC 12.2Kbps_Back_10mm_Ch4182

Communication System: UMTS-FDD; Frequency: 836.400 MHz

Medium: HSL_850_240307 Medium parameters used: $f=836.400$ MHz; $\sigma=0.930$ S/m; $\epsilon_r=41.9$

Ambient Temperature: 23.7°C; Liquid Temperature: 22.7°C

DASY6 Configuration:

- Probe: EX3DV4 - SN7694; ConvF(9.48, 9.48, 9.48); Calibrated: 2023-10-26
- Sensor-Surface: 1.4 mm
- Electronics: DAE4ip Sn1800; Calibrated: 2023-05-31
- Phantom: Twin-SAM V8.0 (30deg probe tilt); Serial: 2144; Section: Flat
- Measurement Software: 16.2.4.2524
- UID: WCDMA, 10011-CAC

Area Scan (120.0 mm x 210.0 mm): Measurement Grid: 15.0 mm x 15.0 mm

SAR (1g) = 0.546 W/kg; SAR (10g) = 0.359 W/kg;

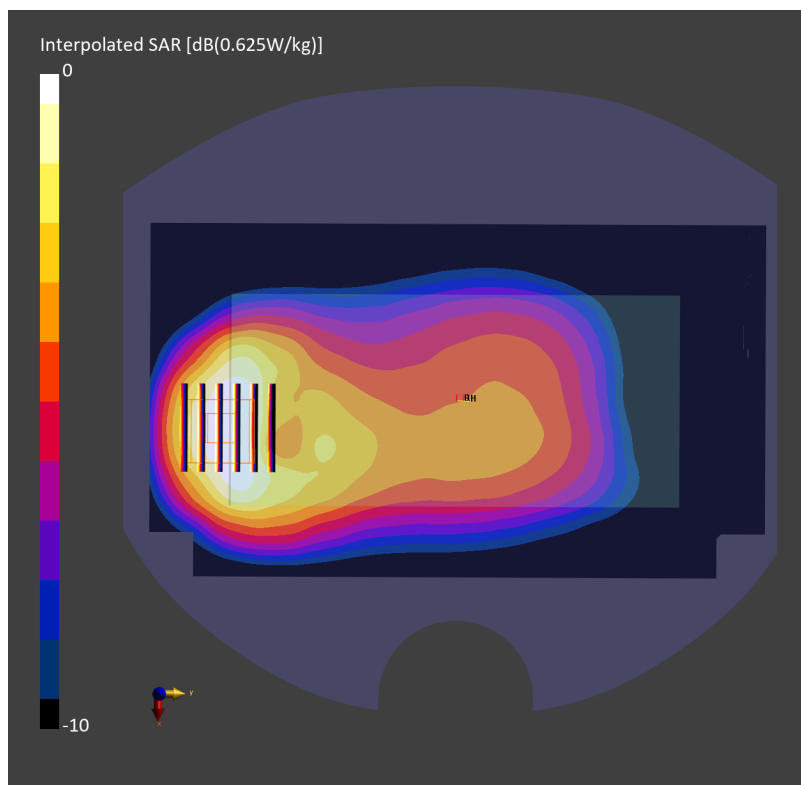
Zoom Scan (30.0 mm x 30.0 mm x 30.0 mm): Measurement Grid: 6.0 mm x 6.0 mm x 1.5 mm

Power Drift = -0.02 dB

SAR (1g) = 0.584 W/kg; SAR (8g) = 0.355 W/kg; SAR (10g) = 0.331 W/kg

Smallest distance from peaks to all points 3 dB below = 10.8 mm

Ratio of SAR at M2 to SAR at M1 = 80.7 %



#77_LTE Band 7_20M_QPSK_1_0_Back_10mm_Ch21100

Communication System: LTE-FDD; Frequency: 2535.000 MHz

Medium: HSL_2600_240310 Medium parameters used: $f=2535.000$ MHz; $\sigma=1.94$ S/m; $\epsilon_r=40.0$

Ambient Temperature: 23.5°C; Liquid Temperature: 22.5°C

DASY6 Configuration:

- Probe: EX3DV4 - SN7694; ConvF(7.47, 7.47, 7.47); Calibrated: 2023-10-26
- Sensor-Surface: 1.4 mm
- Electronics: DAE4ip Sn1800; Calibrated: 2023-05-31
- Phantom: Twin-SAM V8.0 (30deg probe tilt); Serial: 2144; Section: Flat
- Measurement Software: 16.2.4.2524
- UID: LTE-FDD, 10169-CAF

Area Scan (120.0 mm x 200.0 mm): Measurement Grid: 10.0 mm x 10.0 mm

SAR (1g) = 0.404 W/kg; SAR (10g) = 0.191 W/kg;

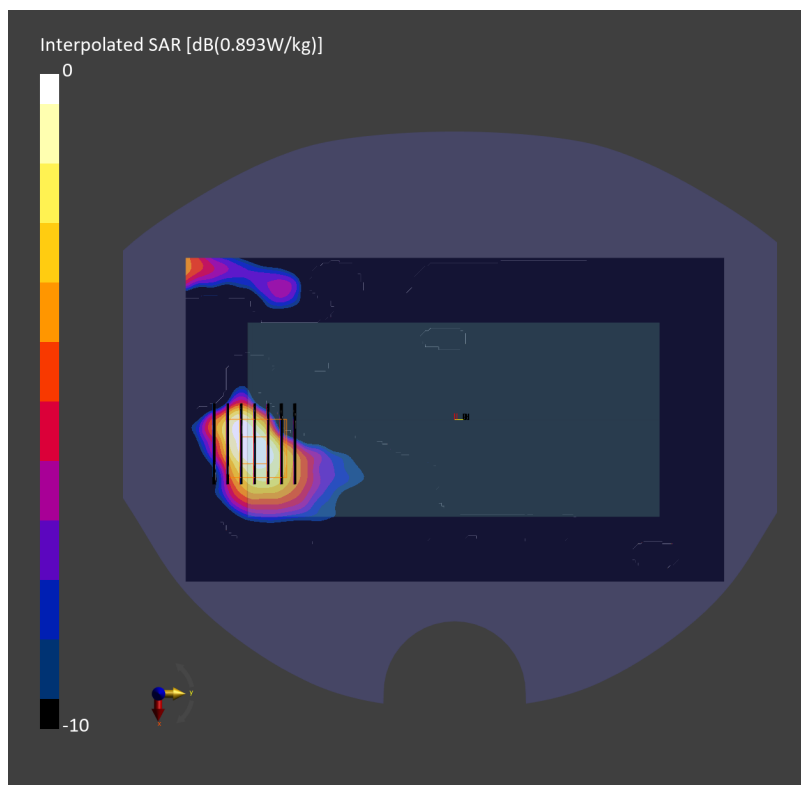
Zoom Scan (30.0 mm x 30.0 mm x 30.0 mm): Measurement Grid: 5.0 mm x 5.0 mm x 1.5 mm

Power Drift = 0.02 dB

SAR (1g) = 0.438 W/kg; SAR (8g) = 0.233 W/kg; SAR (10g) = 0.213 W/kg

Smallest distance from peaks to all points 3 dB below = 10.2 mm

Ratio of SAR at M2 to SAR at M1 = 79.5 %



#78_LTE Band 12_10M_QPSK_1_0_Back_10mm_Ch23095

Communication System: LTE-FDD; Frequency: 707.500 MHz

Medium: HSL_750_240226 Medium parameters used: $f=707.500$ MHz; $\sigma=0.886$ S/m; $\epsilon_r=42.5$

Ambient Temperature: 23.6°C; Liquid Temperature: 22.6°C

DASY6 Configuration:

- Probe: EX3DV4 - SN7700; ConvF(9.45, 9.55, 9.92); Calibrated: 2024-02-01
- Sensor-Surface: 1.4 mm
- Electronics: DAE4 Sn656; Calibrated: 2024-01-18
- Phantom: Twin-SAM V8.0 (30deg probe tilt); Serial: 2145; Section: Flat
- Measurement Software: 16.2.4.2524
- UID: LTE-FDD, 10175-CAH

Area Scan (120.0 mm x 210.0 mm): Measurement Grid: 15.0 mm x 15.0 mm

SAR (1g) = 0.368 W/kg; SAR (10g) = 0.243 W/kg;

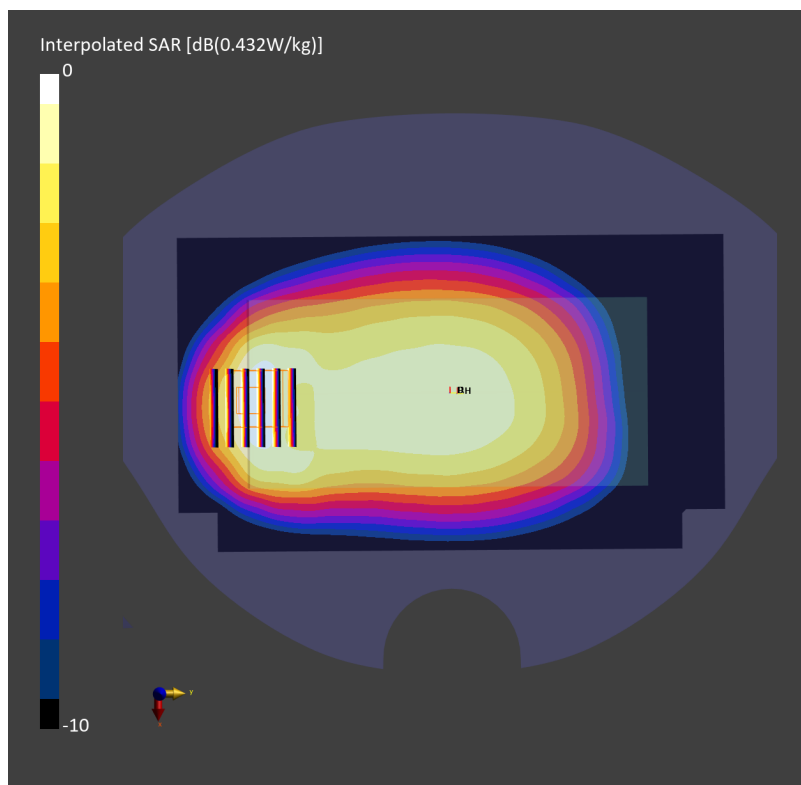
Zoom Scan (30.0 mm x 30.0 mm x 30.0 mm): Measurement Grid: 6.0 mm x 6.0 mm x 1.5 mm

Power Drift = 0.02 dB

SAR (1g) = 0.361 W/kg; SAR (8g) = 0.229 W/kg; SAR (10g) = 0.216 W/kg

Smallest distance from peaks to all points 3 dB below = 14.1 mm

Ratio of SAR at M2 to SAR at M1 = 81.2 %



#79_LTE Band 13_10M_QPSK_1_0_Back_10mm_Ch23230

Communication System: LTE-FDD; Frequency: 782.000 MHz

Medium: HSL_750_240226 Medium parameters used: $f=782.000$ MHz; $\sigma=0.911$ S/m; $\epsilon_r=42.0$

Ambient Temperature: 23.6°C; Liquid Temperature: 22.6°C

DASY6 Configuration:

- Probe: EX3DV4 - SN7700; ConvF(9.45, 9.55, 9.92); Calibrated: 2024-02-01
- Sensor-Surface: 1.4 mm
- Electronics: DAE4 Sn656; Calibrated: 2024-01-18
- Phantom: Twin-SAM V8.0 (30deg probe tilt); Serial: 2145; Section: Flat
- Measurement Software: 16.2.4.2524
- UID: LTE-FDD, 10175-CAH

Area Scan (120.0 mm x 210.0 mm): Measurement Grid: 15.0 mm x 15.0 mm

SAR (1g) = 0.419 W/kg; SAR (10g) = 0.274 W/kg;

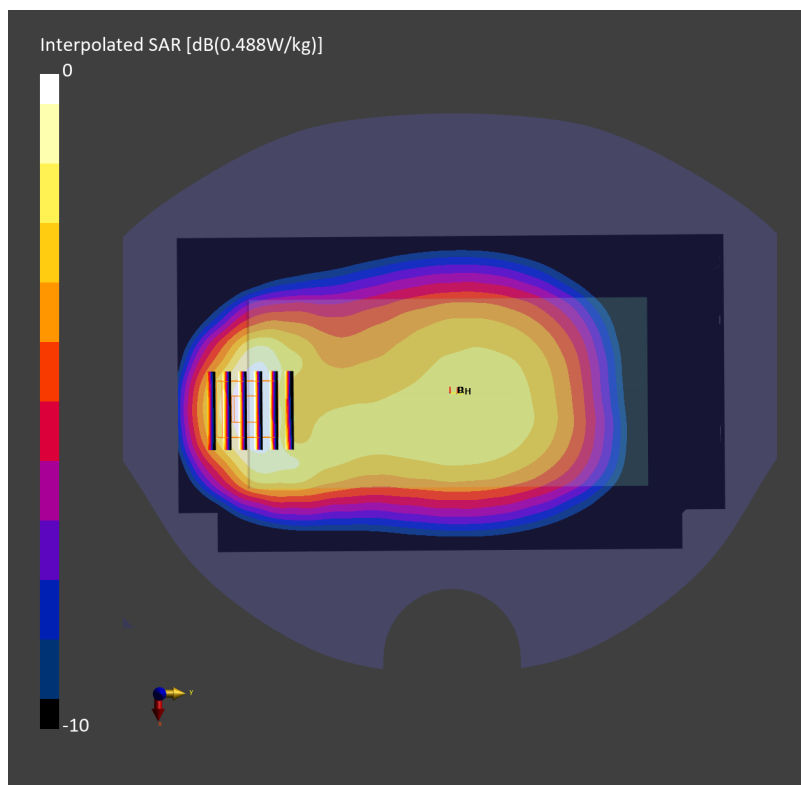
Zoom Scan (30.0 mm x 30.0 mm x 30.0 mm): Measurement Grid: 6.0 mm x 6.0 mm x 1.5 mm

Power Drift = -0.01 dB

SAR (1g) = 0.424 W/kg; SAR (8g) = 0.263 W/kg; SAR (10g) = 0.246 W/kg

Smallest distance from peaks to all points 3 dB below = 13.2 mm

Ratio of SAR at M2 to SAR at M1 = 82.9 %



#80_LTE Band 14_10M_QPSK_1_0_Back_10mm_Ch23330

Communication System: LTE-FDD; Frequency: 793.000 MHz

Medium: HSL_750_240305 Medium parameters used: $f=793.000$ MHz; $\sigma=0.915$ S/m; $\epsilon_r=42.5$

Ambient Temperature: 23.5°C; Liquid Temperature: 22.5°C

DASY6 Configuration:

- Probe: EX3DV4 - SN7700; ConvF(9.45, 9.55, 9.92); Calibrated: 2024-02-01
- Sensor-Surface: 1.4 mm
- Electronics: DAE4 Sn656; Calibrated: 2024-01-18
- Phantom: Twin-SAM V8.0 (30deg probe tilt); Serial: 2145; Section: Flat
- Measurement Software: 16.2.4.2524
- UID: LTE-FDD, 10175-CAH

Area Scan (120.0 mm x 210.0 mm): Measurement Grid: 15.0 mm x 15.0 mm

SAR (1g) = 0.456 W/kg; SAR (10g) = 0.305 W/kg;

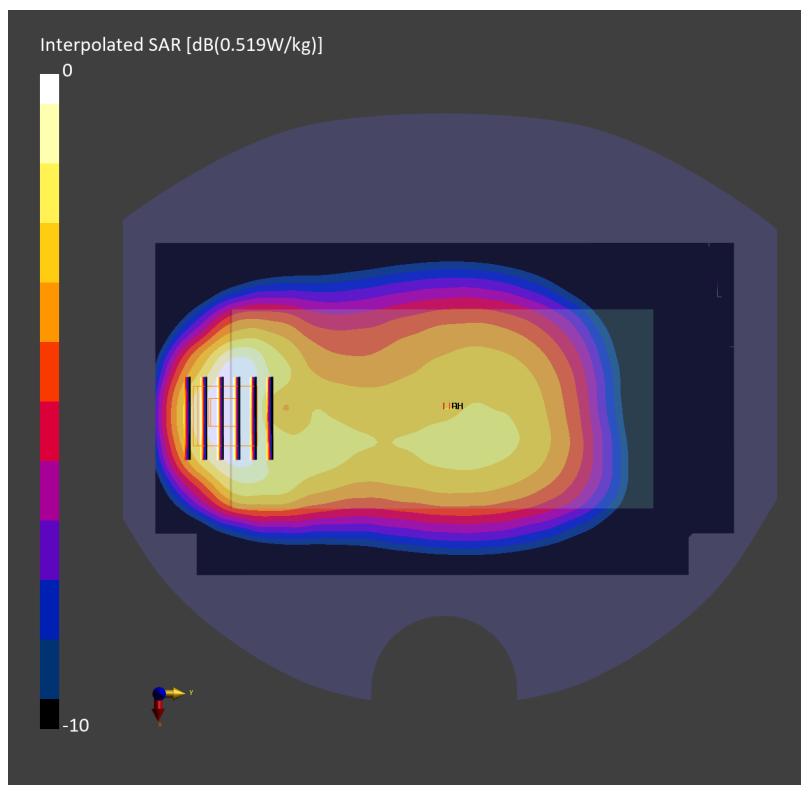
Zoom Scan (30.0 mm x 30.0 mm x 30.0 mm): Measurement Grid: 6.0 mm x 6.0 mm x 1.5 mm

Power Drift = 0.00 dB

SAR (1g) = 0.482 W/kg; SAR (8g) = 0.299 W/kg; SAR (10g) = 0.279 W/kg

Smallest distance from peaks to all points 3 dB below = 12.1 mm

Ratio of SAR at M2 to SAR at M1 = 83.8 %



#81_LTE Band 25_20M_QPSK_1_0_Back_10mm_Ch26590

Communication System: LTE-FDD; Frequency: 1905.000 MHz

Medium: HSL_1900_240309 Medium parameters used: $f=1905.000$ MHz; $\sigma=1.43$ S/m; $\epsilon_r=39.0$

Ambient Temperature: 23.4°C; Liquid Temperature: 22.4°C

DASY6 Configuration:

- Probe: EX3DV4 - SN7700; ConvF(7.7, 7.85, 7.85); Calibrated: 2024-02-01
- Sensor-Surface: 1.4 mm
- Electronics: DAE4 Sn656; Calibrated: 2024-01-18
- Phantom: Twin-SAM V8.0 (30deg probe tilt); Serial: 2145; Section: Flat
- Measurement Software: 16.2.4.2524
- UID: LTE-FDD, 10169-CAF

Area Scan (120.0 mm x 210.0 mm): Measurement Grid: 15.0 mm x 15.0 mm

SAR (1g) = 0.556 W/kg; SAR (10g) = 0.300 W/kg;

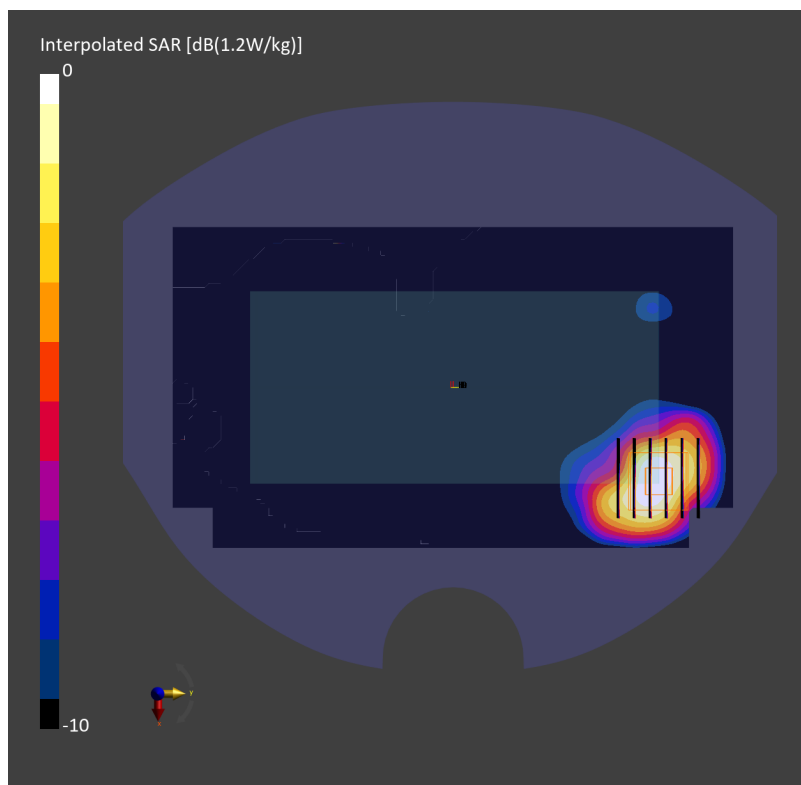
Zoom Scan (30.0 mm x 30.0 mm x 30.0 mm): Measurement Grid: 6.0 mm x 6.0 mm x 1.5 mm

Power Drift = 0.07 dB

SAR (1g) = 0.640 W/kg; SAR (8g) = 0.358 W/kg; SAR (10g) = 0.328 W/kg

Smallest distance from peaks to all points 3 dB below = 7.7 mm

Ratio of SAR at M2 to SAR at M1 = 83.2 %



#82_LTE Band 26_15M_QPSK_1_0_Back_10mm_Ch26865

Communication System: LTE-FDD ; Frequency: 831.500 MHz

Medium: HSL_850_240304 Medium parameters used: $f=831.500$ MHz; $\sigma=0.926$ S/m; $\epsilon_r=42.7$

Ambient Temperature: 23.5°C; Liquid Temperature: 22.5°C

DASY6 Configuration:

- Probe: EX3DV4 - SN7694; ConvF(9.48, 9.48, 9.48); Calibrated: 2023-10-26
- Sensor-Surface: 1.4 mm
- Electronics: DAE4ip Sn1800; Calibrated: 2023-05-31
- Phantom: Twin-SAM V8.0 (30deg probe tilt); Serial: 2144; Section: Flat
- Measurement Software: 16.2.4.2524
- UID: LTE-FDD, 10181-CAF

Area Scan (120.0 mm x 210.0 mm): Measurement Grid: 15.0 mm x 15.0 mm

SAR (1g) = 0.571 W/kg; SAR (10g) = 0.381 W/kg;

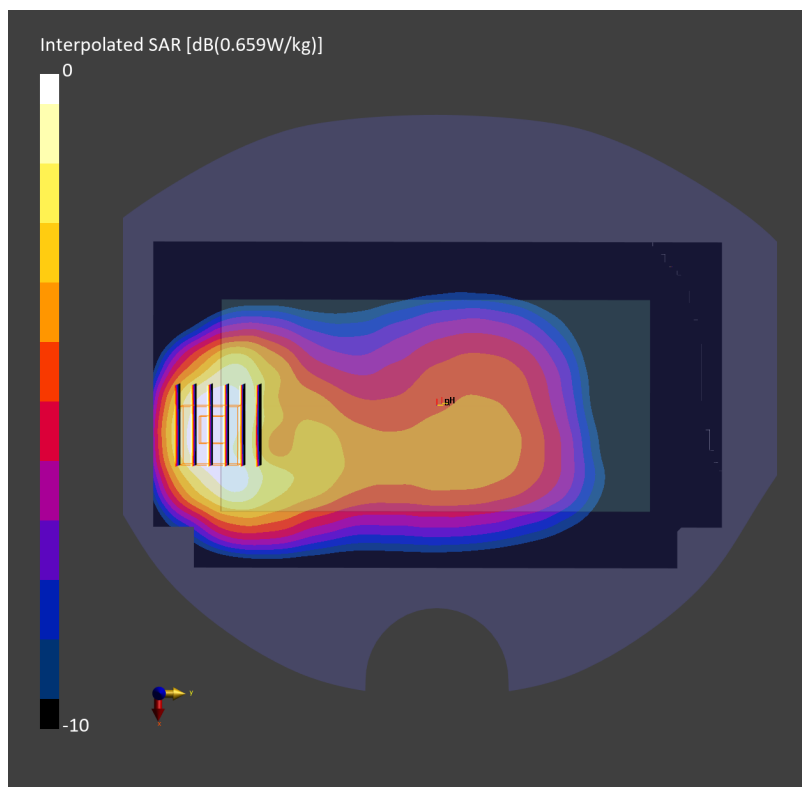
Zoom Scan (30.0 mm x 30.0 mm x 30.0 mm): Measurement Grid: 6.0 mm x 6.0 mm x 1.5 mm

Power Drift = 0.00 dB

SAR (1g) = 0.665 W/kg; SAR (8g) = 0.389 W/kg; SAR (10g) = 0.362 W/kg

Smallest distance from peaks to all points 3 dB below = 10.8 mm

Ratio of SAR at M2 to SAR at M1 = 80.4 %



#83_LTE Band 30_10M_QPSK_1_0_Back_10mm_Ch27710

Communication System: LTE; Frequency: 2310.000 MHz

Medium: HSL_2300_240316 Medium parameters used: $f=2310.000$ MHz; $\sigma=1.66$ S/m; $\epsilon_r=39.6$

Ambient Temperature: 23.7°C; Liquid Temperature: 22.7°C

DASY6 Configuration:

- Probe: EX3DV4 - SN7700; ConvF(7.36, 7.47, 7.48); Calibrated: 2024-02-01
- Sensor-Surface: 1.4 mm
- Electronics: DAE4 Sn656; Calibrated: 2024-01-18
- Phantom: Twin-SAM V8.0 (30deg probe tilt); Serial: 2145; Section: Flat
- Measurement Software: 16.2.4.2524
- UID: LTE-FDD, 10175-CAH

Area Scan (120.0 mm x 200.0 mm): Measurement Grid: 10.0 mm x 10.0 mm

SAR (1g) = 0.580 W/kg; SAR (10g) = 0.289 W/kg;

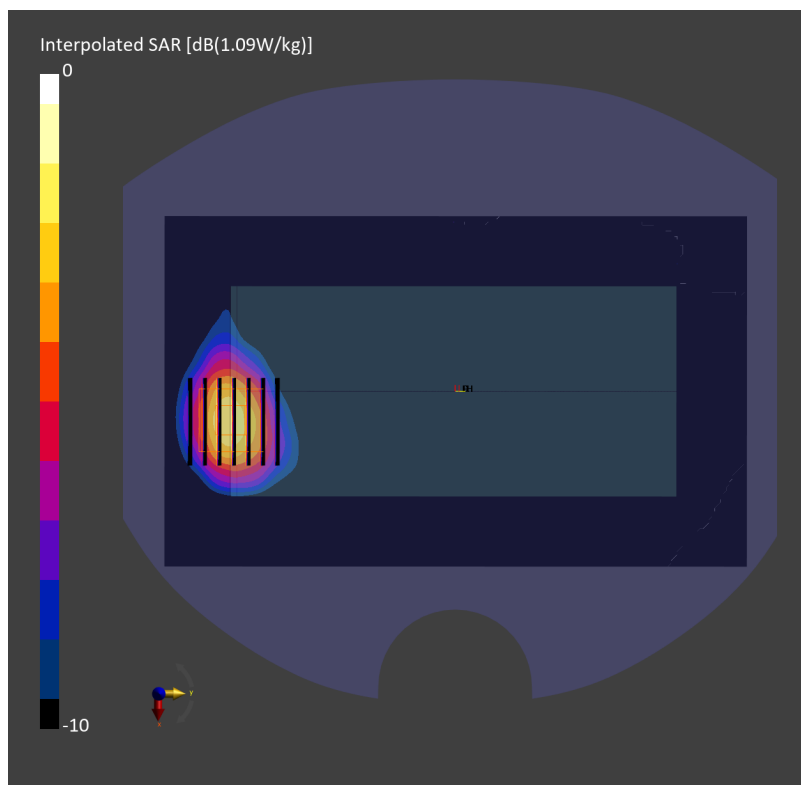
Zoom Scan (30.0 mm x 30.0 mm x 30.0 mm): Measurement Grid: 5.0 mm x 5.0 mm x 1.5 mm

Power Drift = 0.00 dB

SAR (1g) = 0.593 W/kg; SAR (8g) = 0.325 W/kg; SAR (10g) = 0.297 W/kg

Smallest distance from peaks to all points 3 dB below = 10.0 mm

Ratio of SAR at M2 to SAR at M1 = 83.4 %



#84_LTE Band 41_20M_QPSK_1_0_Back_10mm_Ch40620

Communication System: LTE-TDD; Frequency: 2593.000 MHz

Medium: HSL_2600_240310 Medium parameters used: $f=2593.000$ MHz; $\sigma=1.97$ S/m; $\epsilon_r=39.8$

Ambient Temperature: 23.5°C; Liquid Temperature: 22.5°C

DASY6 Configuration:

- Probe: EX3DV4 - SN7694; ConvF(7.47, 7.47, 7.47); Calibrated: 2023-10-26
- Sensor-Surface: 1.4 mm
- Electronics: DAE4ip Sn1800; Calibrated: 2023-05-31
- Phantom: Twin-SAM V8.0 (30deg probe tilt); Serial: 2144; Section: Flat
- Measurement Software: 16.2.4.2524
- UID: LTE-TDD, 10435-AAG

Area Scan (120.0 mm x 200.0 mm): Measurement Grid: 10.0 mm x 10.0 mm

SAR (1g) = 0.564 W/kg; SAR (10g) = 0.303 W/kg;

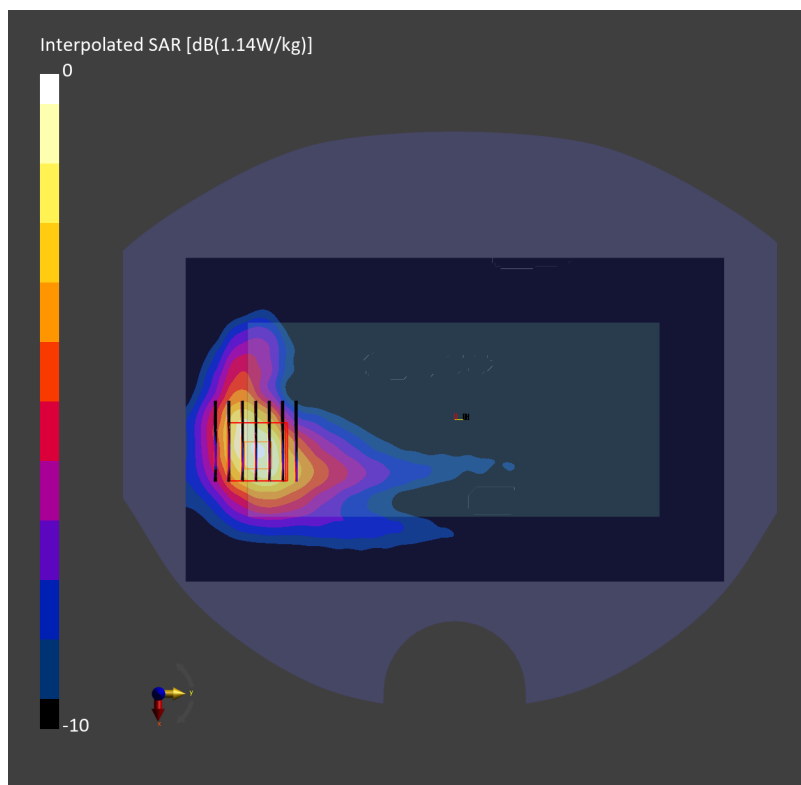
Zoom Scan (30.0 mm x 30.0 mm x 30.0 mm): Measurement Grid: 5.0 mm x 5.0 mm x 1.5 mm

Power Drift = 0.1 dB

SAR (1g) = 0.656 W/kg; SAR (8g) = 0.353 W/kg; SAR (10g) = 0.321 W/kg

Smallest distance from peaks to all points 3 dB below = 7.9 mm

Ratio of SAR at M2 to SAR at M1 = 81.1 %



#85_LTE Band 48_20M_QPSK_1_0_Back_10mm_Ch55830

Communication System: LTE-TDD; Frequency: 3609.000 MHz

Medium: HSL_3700_240315 Medium parameters used: $f=3609.000$ MHz; $\sigma=3.00$ S/m; $\epsilon_r=36.6$

Ambient Temperature: 23.5°C; Liquid Temperature: 22.5°C

DASY6 Configuration:

- Probe: EX3DV4 - SN7700; ConvF(6.95, 6.98, 7.0); Calibrated: 2024-02-01
- Sensor-Surface: 1.4 mm
- Electronics: DAE4 Sn656; Calibrated: 2024-01-18
- Phantom: Twin-SAM V8.0 (30deg probe tilt); Serial: 2145; Section: Flat
- Measurement Software: 16.2.4.2524
- UID: LTE-TDD, 10435-AAG

Area Scan (120.0 mm x 200.0 mm): Measurement Grid: 10.0 mm x 10.0 mm

SAR (1g) = 0.407 W/kg; SAR (10g) = 0.189 W/kg;

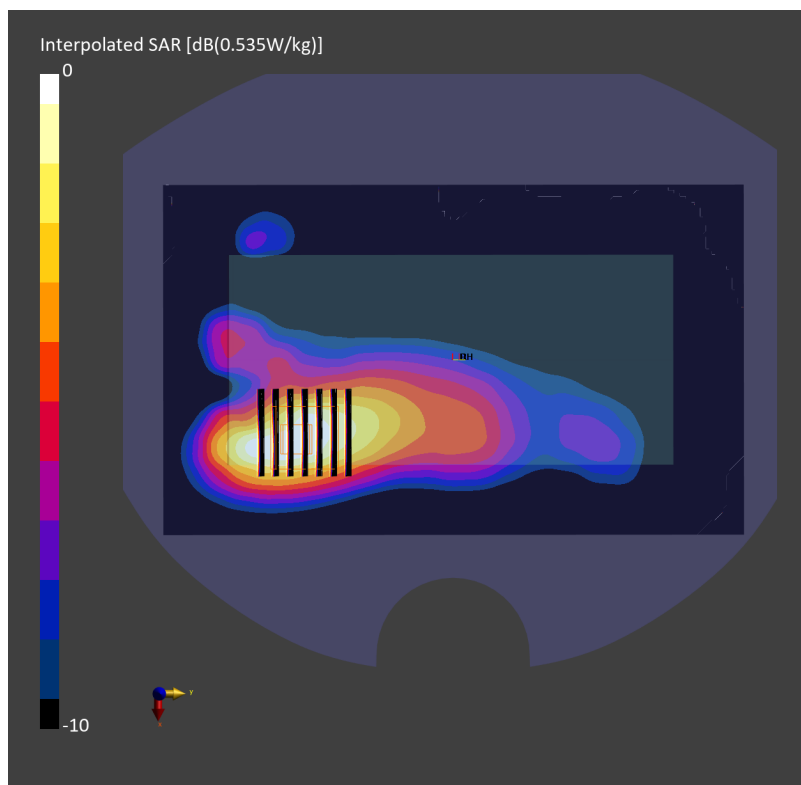
Zoom Scan (28.0 mm x 28.0 mm x 28.0 mm): Measurement Grid: 5.0 mm x 5.0 mm x 1.4 mm

Power Drift = -0.11 dB

SAR (1g) = 0.431 W/kg; SAR (8g) = 0.209 W/kg; SAR (10g) = 0.189 W/kg

Smallest distance from peaks to all points 3 dB below = 9.9 mm

Ratio of SAR at M2 to SAR at M1 = 77.8 %



#86_LTE Band 66_20M_QPSK_50_0_Back_10mm_Ch132572

Communication System: LTE; Frequency: 1770.000 MHz

Medium: HSL_1750_240309 Medium parameters used: $f=1770.000$ MHz; $\sigma=1.37$ S/m; $\epsilon_r=40.5$

Ambient Temperature: 23.4°C; Liquid Temperature: 22.4°C

DASY6 Configuration:

- Probe: EX3DV4 - SN7700; ConvF(8.14, 8.24, 8.22); Calibrated: 2024-02-01
- Sensor-Surface: 1.4 mm
- Electronics: DAE4 Sn656; Calibrated: 2024-01-18
- Phantom: Twin-SAM V8.0 (30deg probe tilt); Serial: 2145; Section: Flat
- Measurement Software: 16.2.4.2524
- UID: LTE-FDD, 10297-AAE

Area Scan (120.0 mm x 210.0 mm): Measurement Grid: 15.0 mm x 15.0 mm

SAR (1g) = 0.610 W/kg; SAR (10g) = 0.324 W/kg;

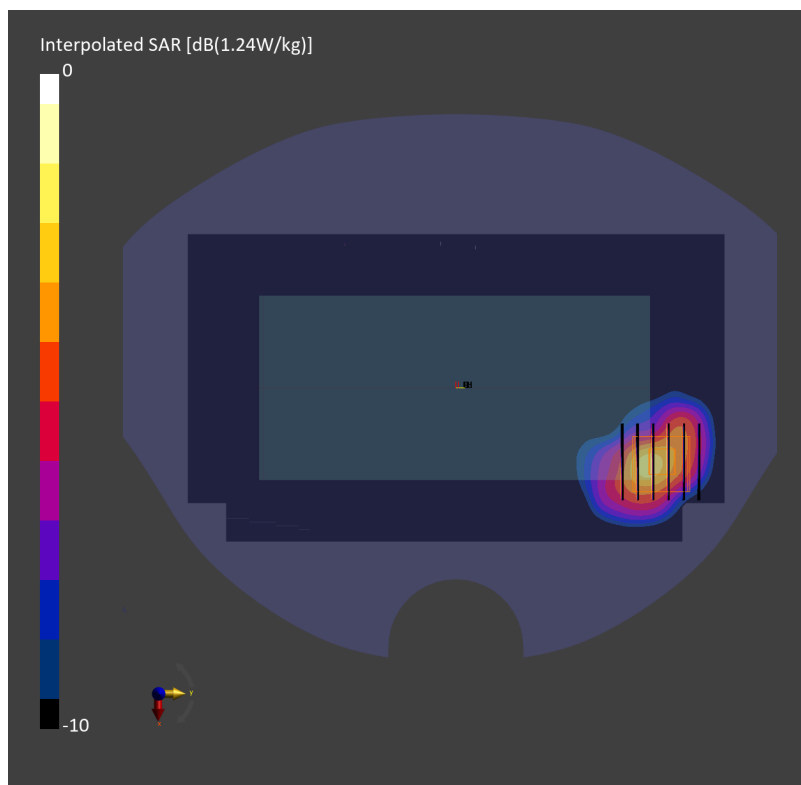
Zoom Scan (30.0 mm x 30.0 mm x 30.0 mm): Measurement Grid: 6.0 mm x 6.0 mm x 1.5 mm

Power Drift = 0.01 dB

SAR (1g) = 0.699 W/kg; SAR (8g) = 0.381 W/kg; SAR (10g) = 0.350 W/kg

Smallest distance from peaks to all points 3 dB below = 8.1 mm

Ratio of SAR at M2 to SAR at M1 = 83.3 %



#87_LTE Band 71_20M_QPSK_1_0_Back_10mm_Ch133297

Communication System: LTE-FDD; Frequency: 680.500 MHz

Medium: HSL_750_240305 Medium parameters used: $f=680.500$ MHz; $\sigma=0.871$ S/m; $\epsilon_r=42.5$

Ambient Temperature: 23.7°C; Liquid Temperature: 22.7°C

DASY6 Configuration:

- Probe: EX3DV4 - SN7694; ConvF(9.84, 9.84, 9.84); Calibrated: 2023-10-26
- Sensor-Surface: 1.4 mm
- Electronics: DAE4ip Sn1800; Calibrated: 2023-05-31
- Phantom: Twin-SAM V8.0 (30deg probe tilt); Serial: 2144; Section: Flat
- Measurement Software: 16.2.4.2524
- UID: LTE-FDD, 10169-CAF

Area Scan (120.0 mm x 210.0 mm): Measurement Grid: 15.0 mm x 15.0 mm

SAR (1g) = 0.434 W/kg; SAR (10g) = 0.278 W/kg;

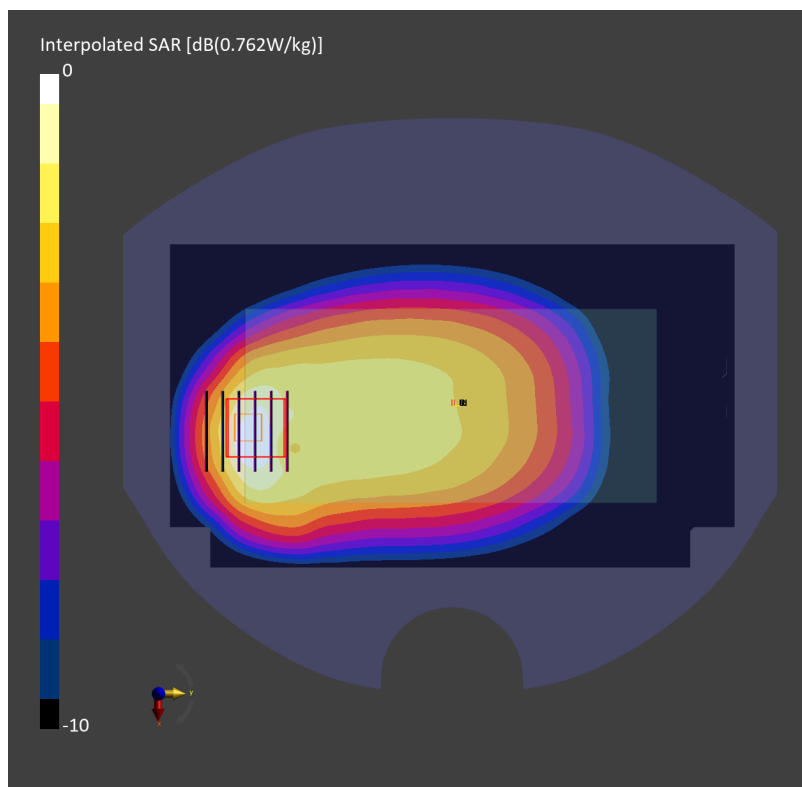
Zoom Scan (30.0 mm x 30.0 mm x 30.0 mm): Measurement Grid: 6.0 mm x 6.0 mm x 1.5 mm

Power Drift = -0.04 dB

SAR (1g) = 0.377 W/kg; SAR (8g) = 0.241 W/kg; SAR (10g) = 0.227 W/kg

Smallest distance from peaks to all points 3 dB below = 14.4 mm

Ratio of SAR at M2 to SAR at M1 = 76.2 %



#88_FR1 n7_50M_BPSK_1_1_Back_10mm_Ch507000

Communication System: 5G NR; Frequency: 2535.000 MHz

Medium: HSL_2600_240313 Medium parameters used: $f=2535.000$ MHz; $\sigma=1.88$ S/m; $\epsilon_r=38.2$

Ambient Temperature: 23.6°C; Liquid Temperature: 22.6°C

DASY6 Configuration:

- Probe: EX3DV4 - SN7700; ConvF(7.33, 7.44, 7.46); Calibrated: 2024-02-01
- Sensor-Surface: 1.4 mm
- Electronics: DAE4 Sn656; Calibrated: 2024-01-18
- Phantom: Twin-SAM V8.0 (30deg probe tilt); Serial: 2145; Section: Flat
- Measurement Software: 16.2.4.2524
- UID: 5G NR FR1 FDD, 10935-AAD

Area Scan (120.0 mm x 200.0 mm): Measurement Grid: 10.0 mm x 10.0 mm

SAR (1g) = 0.468 W/kg; SAR (10g) = 0.232 W/kg;

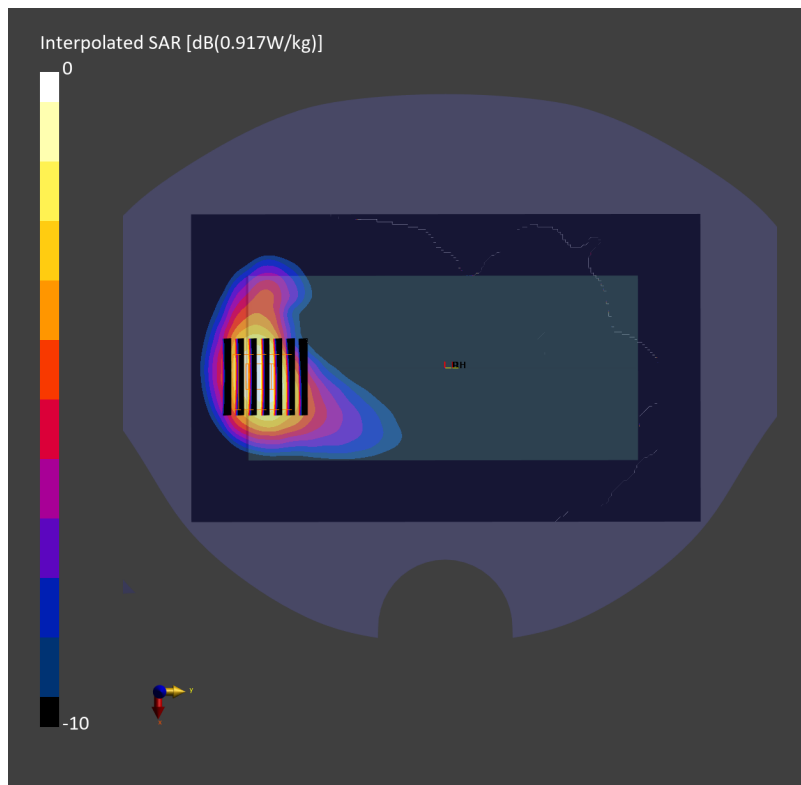
Zoom Scan (30.0 mm x 30.0 mm x 30.0 mm): Measurement Grid: 5.0 mm x 5.0 mm x 1.5 mm

Power Drift = -0.08 dB

SAR (1g) = 0.479 W/kg; SAR (8g) = 0.260 W/kg; SAR (10g) = 0.238 W/kg

Smallest distance from peaks to all points 3 dB below = 10.3 mm

Ratio of SAR at M2 to SAR at M1 = 81.5 %



#89_FR1 n12_15M_BPSK_1_1_Front_10mm_Ch141500

Communication System: 5G NR; Frequency: 707.500 MHz

Medium: HSL_750_240216 Medium parameters used: $f=707.500$ MHz; $\sigma=0.879$ S/m; $\epsilon_r=43.3$

Ambient Temperature: 23.6°C; Liquid Temperature: 22.6°C

DASY6 Configuration:

- Probe: EX3DV4 - SN7694; ConvF(9.84, 9.84, 9.84); Calibrated: 2023-10-26
- Sensor-Surface: 1.4 mm
- Electronics: DAE4ip Sn1800; Calibrated: 2023-05-31
- Phantom: Twin-SAM V8.0 (30deg probe tilt); Serial: 2144; Section: Flat
- Measurement Software: 16.2.4.2524
- UID: 5G NR FR1 FDD, 10930-AAC

Area Scan (120.0 mm x 210.0 mm): Measurement Grid: 15.0 mm x 15.0 mm

SAR (1g) = 0.305 W/kg; SAR (10g) = 0.220 W/kg;

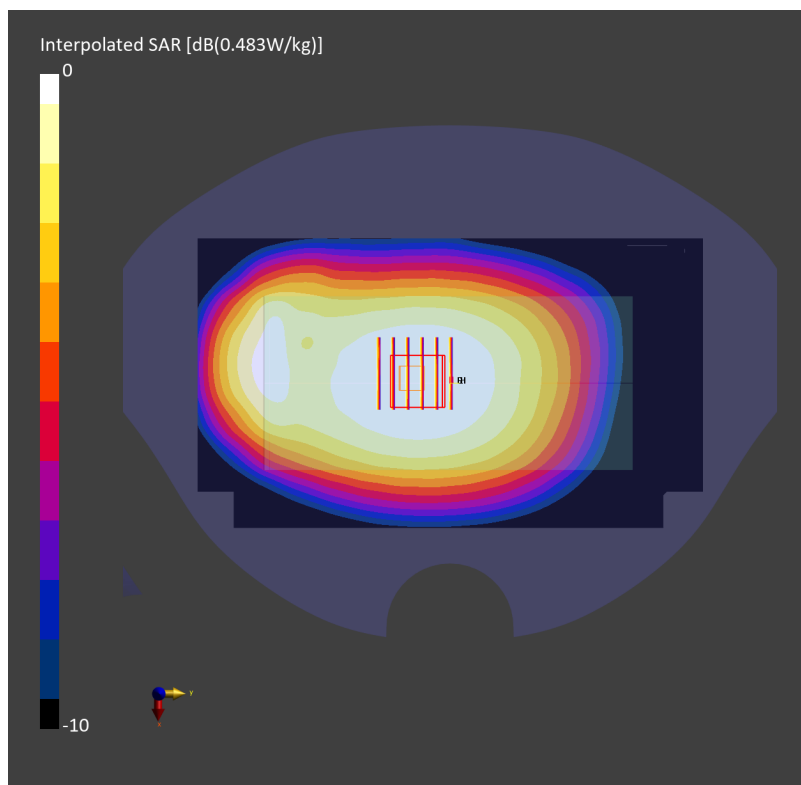
Zoom Scan (30.0 mm x 30.0 mm x 30.0 mm): Measurement Grid: 6.0 mm x 6.0 mm x 1.5 mm

Power Drift = -0.15 dB

SAR (1g) = 0.338 W/kg; SAR (8g) = 0.271 W/kg; SAR (10g) = 0.262 W/kg

Smallest distance from peaks to all points 3 dB below = > 15.0 mm

Ratio of SAR at M2 to SAR at M1 = 86.6 %



#90_FR1 n14_10M_BPSK_1_1_Back_10mm_Ch158600

Communication System: 5G NR; Frequency: 793.000 MHz

Medium: HSL_750_240216 Medium parameters used: $f=793.000$ MHz; $\sigma=0.907$ S/m; $\epsilon_r=42.8$

Ambient Temperature: 23.6°C; Liquid Temperature: 22.6°C

DASY6 Configuration:

- Probe: EX3DV4 - SN7694; ConvF(9.84, 9.84, 9.84); Calibrated: 2023-10-26
- Sensor-Surface: 1.4 mm
- Electronics: DAE4ip Sn1800; Calibrated: 2023-05-31
- Phantom: Twin-SAM V8.0 (30deg probe tilt); Serial: 2144; Section: Flat
- Measurement Software: 16.2.4.2524
- UID: 5G NR FR1 FDD, 10929-AAD

Area Scan (120.0 mm x 210.0 mm): Measurement Grid: 15.0 mm x 15.0 mm

SAR (1g) = 0.427 W/kg; SAR (10g) = 0.291 W/kg;

Zoom Scan (30.0 mm x 30.0 mm x 30.0 mm): Measurement Grid: 6.0 mm x 6.0 mm x 1.5 mm

Power Drift = -0.02 dB

SAR (1g) = 0.475 W/kg; SAR (8g) = 0.289 W/kg; SAR (10g) = 0.270 W/kg

Smallest distance from peaks to all points 3 dB below = 10.9 mm

Ratio of SAR at M2 to SAR at M1 = 77.1 %

