

DASY8 Module WPT Measurement Report

Device under test

Info:
1_Back_0mm

Tool info

DASY software version:
DASY8 Module WPT 2.4.0.4346

Probe model, serial no. and configuration date:
MAGPy-8H3D+E3Dv2, WP000211, 2023/05/09

Software version:
2.0.49, backend: 2.2.3

Scan info

Center location:
x: 37.45 mm, y: -153.45 mm, z: 287.20 mm

Dimensions:
x: 169.0 mm, y: 257.0 mm, z: 36.7 mm

Resolution:
x: 7.33 mm, y: 7.33 mm, z: 7.33 mm

Completed on:
2024/03/06

Measurement results

Maximum H-field [RMS]:

MAGNITUDE: 1.41 A/m

x: 423.49 mA/m, y: 469.37 mA/m, z: 1.27 A/m

Maximum H-field location relative to DUT:

x: -47.67 mm, y: -3.67 mm, z: 8.50 mm

Maximum E-field [RMS]:

MAGNITUDE: 8.38 V/m

x: 335.18 mV/m, y: 316.06 mV/m, z: 8.36 V/m

Maximum E-field location relative to DUT:

x: 7.33 mm, y: 0.00 m, z: 1.00 mm

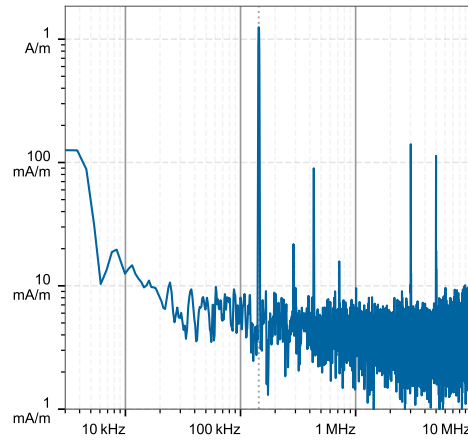
Distance to -20.0 dB boundary:

57.28 mm

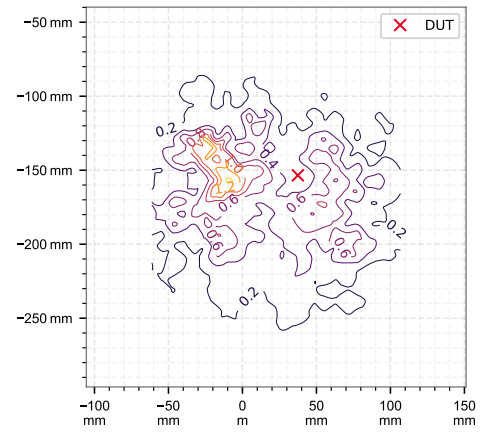
Offset relative to DUT:

x: 0.00 m, y: 0.00 m, z: 1.00 mm

H-field magnitude [RMS] at maximum location



H-field magnitude [RMS] at lowest plane



Incident fields, and induced quantities in the anatomical model

Distance [mm]	Peak incident fields [RMS]		Peak E_{ind} [V/m, RMS]			Peak J_{ind} [A/m ² , RMS]	psSAR [mW/kg]		H-field extent
	H_{inc} [A/m]	E_{inc} [V/m]	Cube avg.	Local	Line avg.	Surface avg.	1g avg.	10g avg.	-20 dB radius [mm]
0.0	2.24	8.38	0.0159	0.0162	0.0161	0.0109	0.000142	0.000101	80.5

DASY8 Module WPT Measurement Report

Device under test

Info:
2_Right Side_0mm

Tool info

DASY software version:
DASY8 Module WPT 2.4.0.4346

Probe model, serial no. and configuration date:
MAGPy-8H3D+E3Dv2, WP000211, 2023/05/09

Software version:
2.0.49, backend: 2.2.3

Scan info

Center location:
x: 34.57 mm, y: -174.71 mm, z: 333.99 mm

Dimensions:
x: 169.0 mm, y: 257.0 mm, z: 36.7 mm

Resolution:
x: 7.33 mm, y: 7.33 mm, z: 7.33 mm

Completed on:
2024/03/06

Measurement results

Maximum H-field [RMS]:

MAGNITUDE: 2.63 A/m

x: 662.16 mA/m, y: 651.72 mA/m, z: 2.46 A/m

Maximum H-field location relative to DUT:

x: -11.00 mm, y: -11.00 mm, z: 8.50 mm

Maximum E-field [RMS]:

MAGNITUDE: 2.40 V/m

x: 489.80 mV/m, y: 301.22 mV/m, z: 2.33 V/m

Maximum E-field location relative to DUT:

x: 0.00 m, y: 14.67 mm, z: 1.00 mm

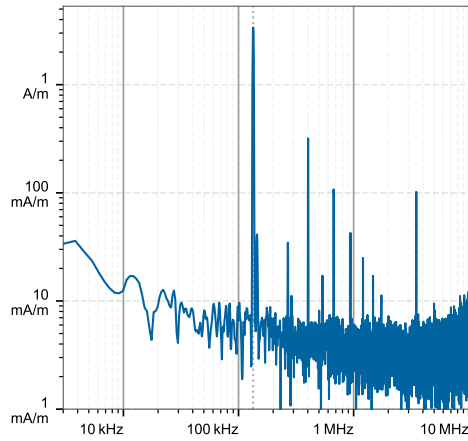
Distance to -20.0 dB boundary:

36.67 mm

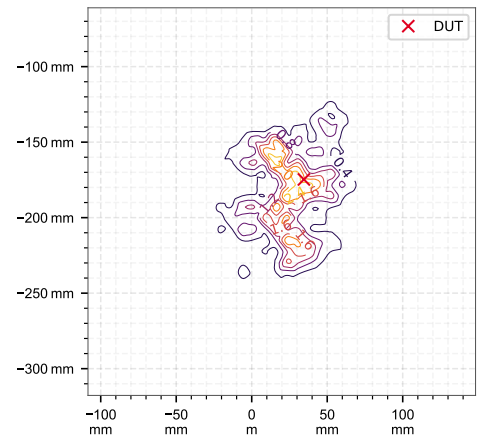
Offset relative to DUT:

x: 0.00 m, y: 0.00 m, z: 1.00 mm

H-field magnitude [RMS] at maximum location



H-field magnitude [RMS] at lowest plane



Incident fields, and induced quantities in the anatomical model

Distance [mm]	Peak incident fields [RMS]		Peak E_{ind} [V/m, RMS]			Peak J_{ind} [A/m ² , RMS]	psSAR [mW/kg]		H-field extent
	H_{inc} [A/m]	E_{inc} [V/m]	Cube avg.	Local	Line avg.	Surface avg.	1g avg.	10g avg.	-20 dB radius [mm]
0.0	4.58	2.4	0.0213	0.0219	0.0219	0.0143	0.000226	0.000135	48.3