

# DASY8 Module WPT Measurement Report

## Device under test

Info:  
VCoil35085

## Tool info

DASY software version:  
DASY8 Module WPT 2.4.0.4346

Probe model, serial no. and configuration date:  
MAGPy-8H3D+E3Dv2, WP000211, 2023/05/09

Software version:  
2.0.49, backend: 2.2.3

## Scan info

Center location:  
**x:** 131.38 mm, **y:** 6.30 mm, **z:** 36.21 mm

Dimensions:  
**x:** 345.0 mm, **y:** 433.0 mm, **z:** 36.7 mm

Resolution:  
**x:** 7.33 mm, **y:** 7.33 mm, **z:** 7.33 mm

Completed on:  
2024/03/06

## Measurement results

Maximum H-field [RMS]:  
MAGNITUDE: 135.10 A/m  
**x:** 4.28 A/m, **y:** 118.79 A/m, **z:** 64.19 A/m

Maximum H-field location relative to DUT:  
**x:** -3.67 mm, **y:** -172.33 mm, **z:** 8.50 mm

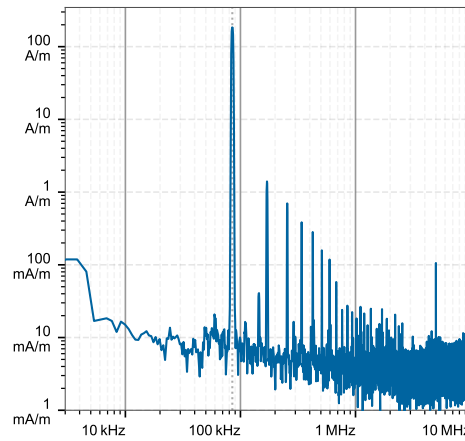
Maximum E-field [RMS]:  
MAGNITUDE: 242.70 V/m  
**x:** 8.26 V/m, **y:** 2.94 V/m, **z:** 242.54 V/m

Maximum E-field location relative to DUT:  
**x:** 88.00 mm, **y:** 146.67 mm, **z:** 1.00 mm

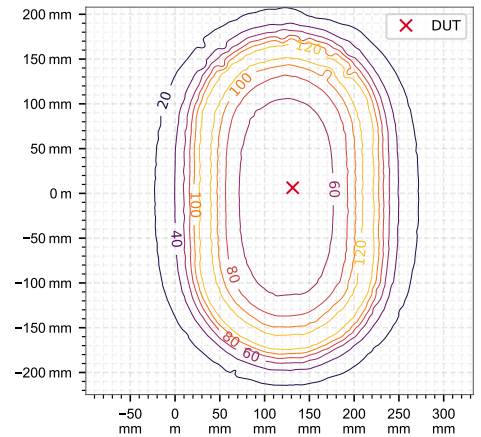
Distance to -20.0 dB boundary:  
65.59 mm

Offset relative to DUT:  
**x:** 0.00 m, **y:** 0.00 m, **z:** 1.00 mm

## H-field magnitude [RMS] at maximum location



## H-field magnitude [RMS] at lowest plane



## Incident fields, and induced quantities in the anatomical model

Distance [mm]	Peak incident fields [RMS]		Peak $E_{ind}$ [V/m, RMS]			Peak $J_{ind}$ [A/m <sup>2</sup> , RMS]	psSAR [mW/kg]		H-field extent
	$H_{inc}$ [A/m]	$E_{inc}$ [V/m]	Cube avg.	Local	Line avg.	Surface avg.	1g avg.	10g avg.	-20 dB radius [mm]
2.0	184.0	213.0	3.18	3.21	3.22	1.06	2.84	2.16	185.0