

## Measurement Report for 102843-05

### Device Under Test Properties

Model, Manufacturer	Dimensions [mm]	IMEI	DUT Type
102843-05,	156.0 x 77.0 x 9.0		Phone

### Exposure Conditions

Phantom Section	Position, Test Distance [mm]	Frequency [MHz]	Conversion Factor
5G	EDGE TOP, 2.00	38500.0	1.0

### Hardware Setup

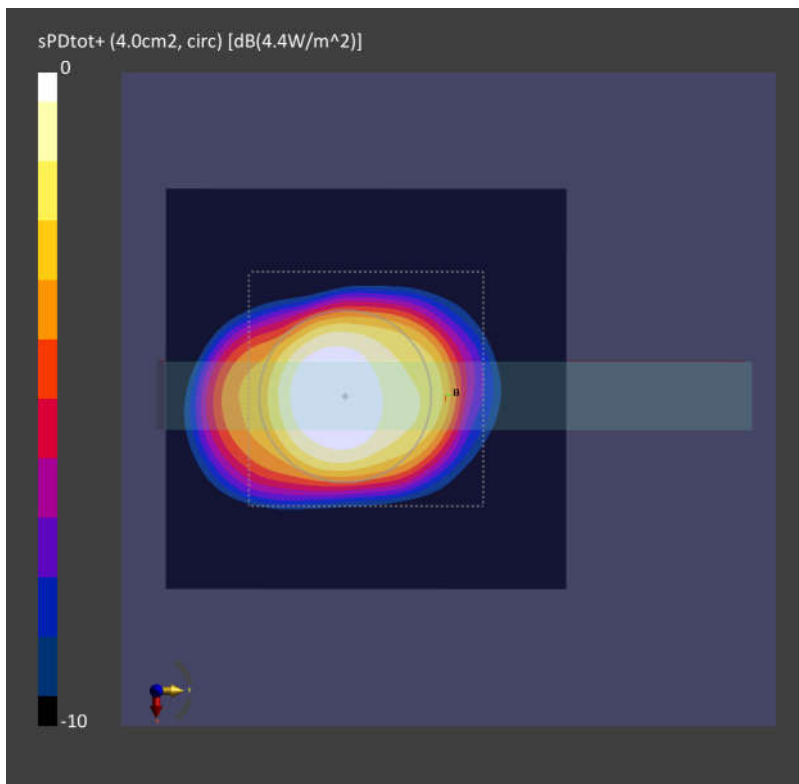
Phantom	Medium	Probe, Calibration Date	DAE, Calibration Date
mmWave - 1044	Air -	EUmmWV4 - SN9461_F1-55GHz, 2021-10-22	DAE4 Sn699, 2022-02-24

### Scans Setup

Scan Type	5G Scan
Grid Extents [mm]	50.0 x 50.0
Grid Steps [lambda]	0.25 x 0.25
Sensor Surface [mm]	2.0

### Measurement Results

Date	2022-04-19, 06:51
Avg. Area [cm <sup>2</sup> ]	4.00
psPDn+ [W/m <sup>2</sup> ]	3.07
psPDtot+ [W/m <sup>2</sup> ]	4.40
H <sub>max</sub> [A/m]	0.361
E <sub>max</sub> [V/m]	128
max <sub>(Stot)</sub> [W/m <sup>2</sup> ]	35.7
Power Drift [dB]	0.13



## Measurement Report for 102843-05

### Device Under Test Properties

Model, Manufacturer	Dimensions [mm]	IMEI	DUT Type
102843-05,	156.0 x 77.0 x 9.0		Phone

### Exposure Conditions

Phantom Section	Position, Test Distance [mm]	Frequency [MHz]	Conversion Factor
5G	EDGE TOP, 2.00	27500.0	1.0

### Hardware Setup

Phantom	Medium	Probe, Calibration Date	DAE, Calibration Date
mmWave - 1044	Air -	EUmmWV4 - SN9461_F1-55GHz, 2021-10-22	DAE4 Sn699, 2022-02-24

### Scans Setup

Scan Type	5G Scan
Grid Extents [mm]	50.0 x 50.0
Grid Steps [lambda]	0.25 x 0.25
Sensor Surface [mm]	2.0

### Measurement Results

Date	2022-04-19, 03:10
Avg. Area [cm <sup>2</sup> ]	4.00
psPDn+ [W/m <sup>2</sup> ]	3.39
psPDtot+ [W/m <sup>2</sup> ]	4.38
H <sub>max</sub> [A/m]	0.250
E <sub>max</sub> [V/m]	84.3
max <sub>(Stot)</sub> [W/m <sup>2</sup> ]	18.5
Power Drift [dB]	0.15

