

# Plot No.1

Measurement performed on October 10, 2023

## Device Under Test

Manufacturer	Model	Dimensions[mm]	Speaker Position [mm]
Google	GKV4X	151.0 x 72.0 x 10.0	150.0

## Hardware Setup

Probe Name	Probe Calibration Date	DAE Name	DAE Calibration Date
EF3DV3 - SN4088	August 15, 2023	DAE4 Sn699	February 22, 2023

## Communication Systems

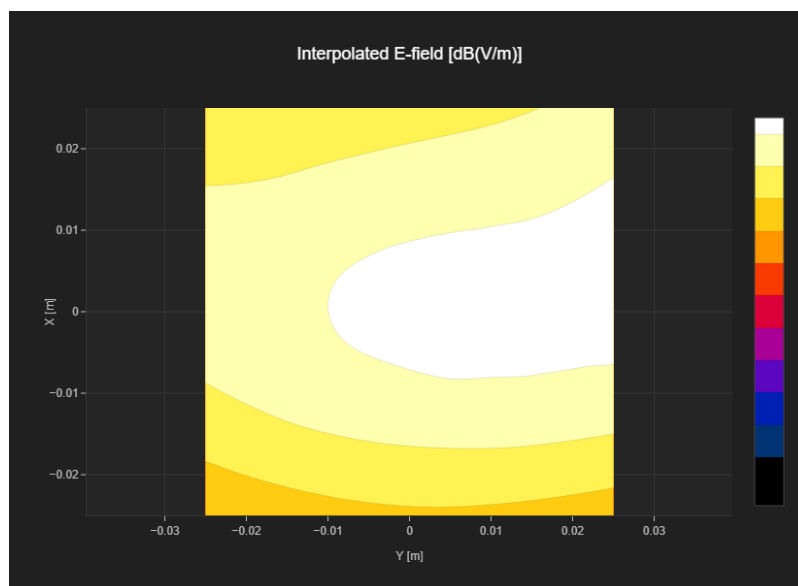
Band Name	Communication Systems Name	Channel	Frequency [MHz]
GSM 850	GSM-FDD (TDMA, GMSK)	128	824.2

## Grid Settings

Extent X [mm]	Extent Y [mm]	Step X [mm]	Step Y [mm]	Distance [mm]
50.0	50.0	10.0	10.0	15.0

## Results

E <sub>max</sub> [dB(V/m)]	E <sub>avg50x50 max</sub> [dB(V/m)]	MIF [dB]	RFail [dB(V/m)]
32.16	30.54	3.63	34.17



# Plot No.2

Measurement performed on October 10, 2023

## Device Under Test

Manufacturer	Model	Dimensions[mm]	Speaker Position [mm]
Google	GKV4X	151.0 x 72.0 x 10.0	150.0

## Hardware Setup

Probe Name	Probe Calibration Date	DAE Name	DAE Calibration Date
EF3DV3 - SN4088	August 15, 2023	DAE4 Sn699	February 22, 2023

## Communication Systems

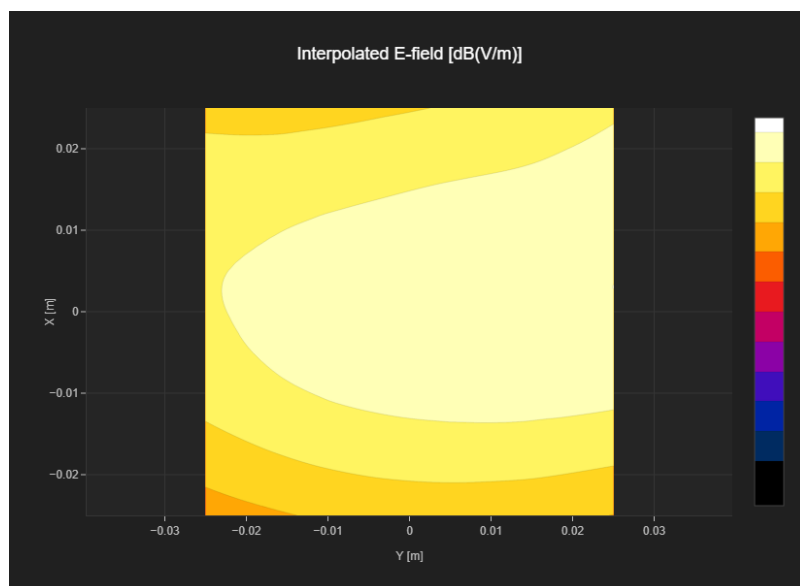
Band Name	Communication Systems Name	Channel	Frequency [MHz]
GSM 850	GSM-FDD (TDMA, GMSK)	189	836.4

## Grid Settings

Extent X [mm]	Extent Y [mm]	Step X [mm]	Step Y [mm]	Distance [mm]
50.0	50.0	10.0	10.0	15.0

## Results

E <sub>max</sub> [dB(V/m)]	E <sub>avg50x50 max</sub> [dB(V/m)]	MIF [dB]	RFail [dB(V/m)]
32.92	31.28	3.63	34.91



# Plot No.3

Measurement performed on October 10, 2023

## Device Under Test

Manufacturer	Model	Dimensions[mm]	Speaker Position [mm]
Google	GKV4X	151.0 x 72.0 x 10.0	150.0

## Hardware Setup

Probe Name	Probe Calibration Date	DAE Name	DAE Calibration Date
EF3DV3 - SN4088	August 15, 2023	DAE4 Sn699	February 22, 2023

## Communication Systems

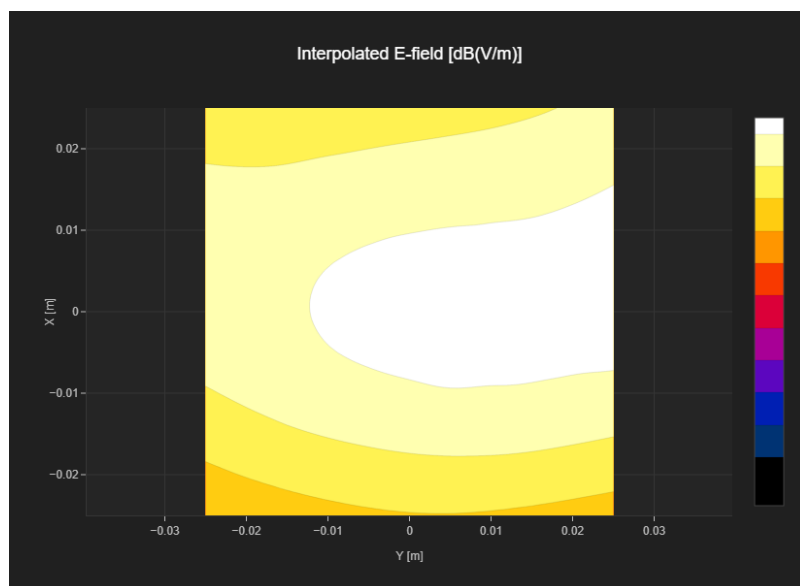
Band Name	Communication Systems Name	Channel	Frequency [MHz]
GSM 850	GSM-FDD (TDMA, GMSK)	251	848.8

## Grid Settings

Extent X [mm]	Extent Y [mm]	Step X [mm]	Step Y [mm]	Distance [mm]
50.0	50.0	10.0	10.0	15.0

## Results

E <sub>max</sub> [dB(V/m)]	E <sub>avg50x50 max</sub> [dB(V/m)]	MIF [dB]	RFail [dB(V/m)]
33.37	31.77	3.63	35.4



# Plot No.4

Measurement performed on October 10, 2023

## Device Under Test

Manufacturer	Model	Dimensions[mm]	Speaker Position [mm]
Google	GKV4X	151.0 x 72.0 x 10.0	150.0

## Hardware Setup

Probe Name	Probe Calibration Date	DAE Name	DAE Calibration Date
EF3DV3 - SN4088	August 15, 2023	DAE4 Sn699	February 22, 2023

## Communication Systems

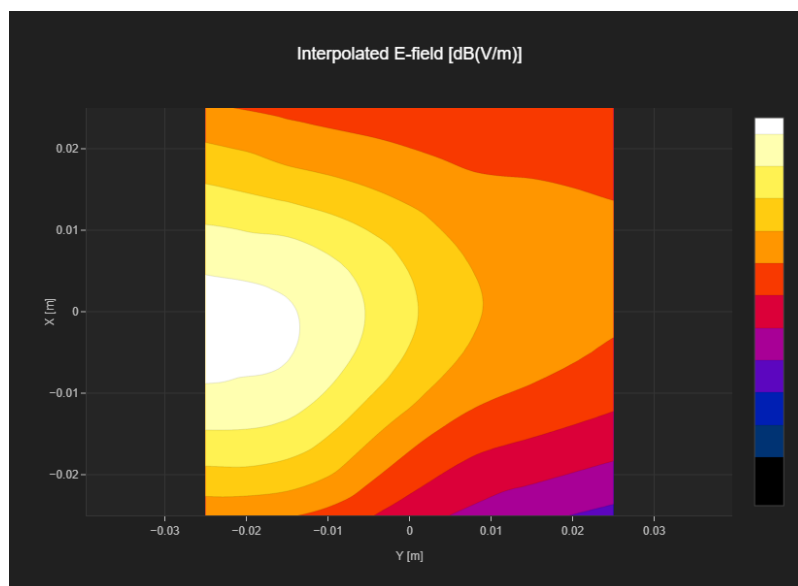
Band Name	Communication Systems Name	Channel	Frequency [MHz]
GSM 850	GSM-FDD (TDMA, GMSK)	128	824.2

## Grid Settings

Extent X [mm]	Extent Y [mm]	Step X [mm]	Step Y [mm]	Distance [mm]
50.0	50.0	10.0	10.0	15.0

## Results

E <sub>max</sub> [dB(V/m)]	E <sub>avg50x50 max</sub> [dB(V/m)]	MIF [dB]	RFail [dB(V/m)]
38.96	33.53	3.63	37.16



# Plot No.5

Measurement performed on October 10, 2023

## Device Under Test

Manufacturer	Model	Dimensions[mm]	Speaker Position [mm]
Google	GKV4X	151.0 x 72.0 x 10.0	150.0

## Hardware Setup

Probe Name	Probe Calibration Date	DAE Name	DAE Calibration Date
EF3DV3 - SN4088	August 15, 2023	DAE4 Sn699	February 22, 2023

## Communication Systems

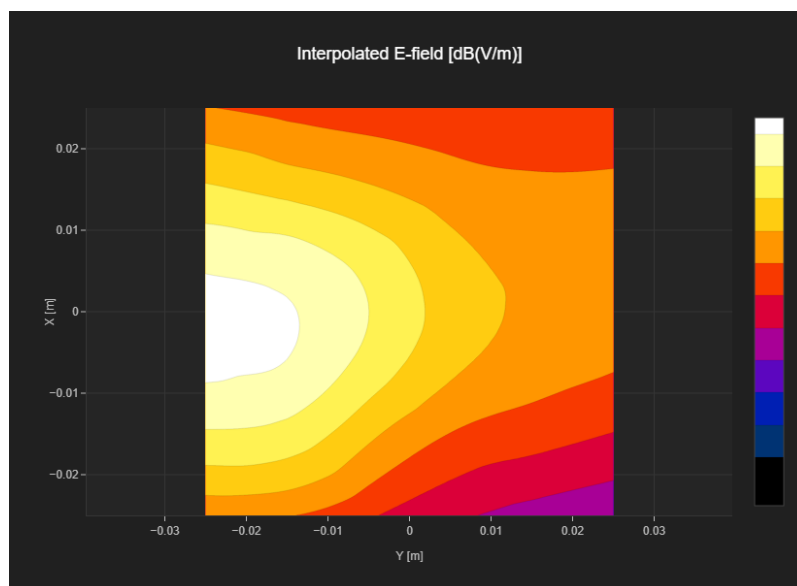
Band Name	Communication Systems Name	Channel	Frequency [MHz]
GSM 850	GSM-FDD (TDMA, GMSK)	189	836.4

## Grid Settings

Extent X [mm]	Extent Y [mm]	Step X [mm]	Step Y [mm]	Distance [mm]
50.0	50.0	10.0	10.0	15.0

## Results

E <sub>max</sub> [dB(V/m)]	E <sub>avg50x50 max</sub> [dB(V/m)]	MIF [dB]	RFail [dB(V/m)]
39.7	34.43	3.63	38.06



# Plot No.6

Measurement performed on October 10, 2023

## Device Under Test

Manufacturer	Model	Dimensions[mm]	Speaker Position [mm]
Google	GKV4X	151.0 x 72.0 x 10.0	150.0

## Hardware Setup

Probe Name	Probe Calibration Date	DAE Name	DAE Calibration Date
EF3DV3 - SN4088	August 15, 2023	DAE4 Sn699	February 22, 2023

## Communication Systems

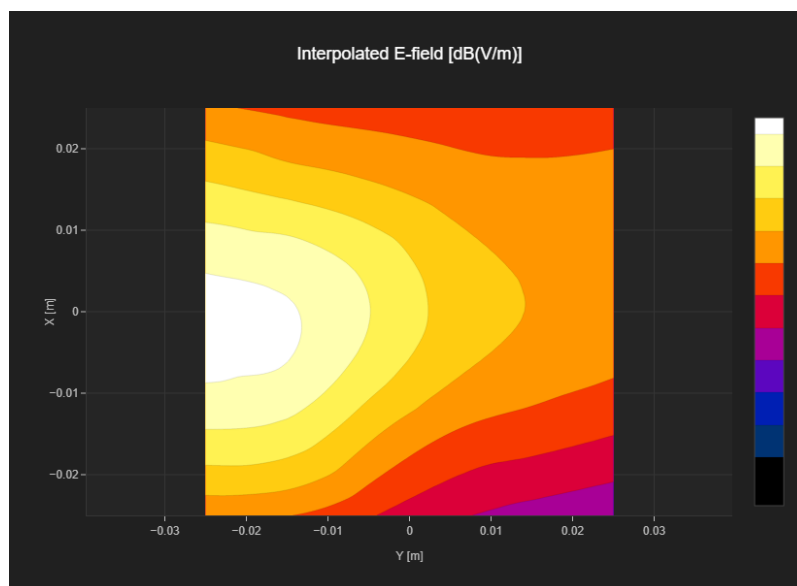
Band Name	Communication Systems Name	Channel	Frequency [MHz]
GSM 850	GSM-FDD (TDMA, GMSK)	251	848.8

## Grid Settings

Extent X [mm]	Extent Y [mm]	Step X [mm]	Step Y [mm]	Distance [mm]
50.0	50.0	10.0	10.0	15.0

## Results

E <sub>max</sub> [dB(V/m)]	E <sub>avg50x50 max</sub> [dB(V/m)]	MIF [dB]	RFail [dB(V/m)]
39.25	34.06	3.63	37.69



# Plot No.7

Measurement performed on October 10, 2023

## Device Under Test

Manufacturer	Model	Dimensions[mm]	Speaker Position [mm]
Google	GKV4X	151.0 x 72.0 x 10.0	150.0

## Hardware Setup

Probe Name	Probe Calibration Date	DAE Name	DAE Calibration Date
EF3DV3 - SN4088	August 15, 2023	DAE4 Sn699	February 22, 2023

## Communication Systems

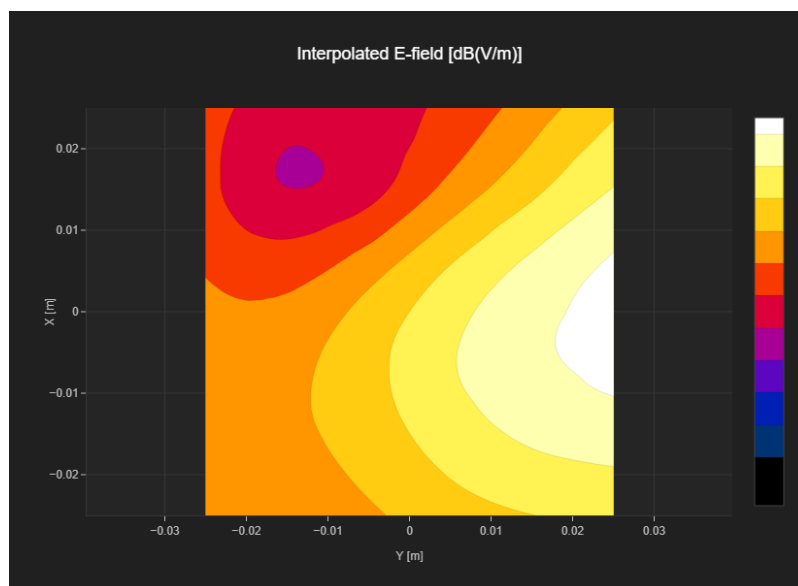
Band Name	Communication Systems Name	Channel	Frequency [MHz]
PCS 1900	GSM-FDD (TDMA, GMSK)	512	1850.2

## Grid Settings

Extent X [mm]	Extent Y [mm]	Step X [mm]	Step Y [mm]	Distance [mm]
50.0	50.0	10.0	10.0	15.0

## Results

E <sub>max</sub> [dB(V/m)]	E <sub>avg50x50 max</sub> [dB(V/m)]	MIF [dB]	RFail [dB(V/m)]
28.14	23.11	3.63	26.74



# Plot No.8

Measurement performed on October 10, 2023

## Device Under Test

Manufacturer	Model	Dimensions[mm]	Speaker Position [mm]
Google	GKV4X	151.0 x 72.0 x 10.0	150.0

## Hardware Setup

Probe Name	Probe Calibration Date	DAE Name	DAE Calibration Date
EF3DV3 - SN4088	August 15, 2023	DAE4 Sn699	February 22, 2023

## Communication Systems

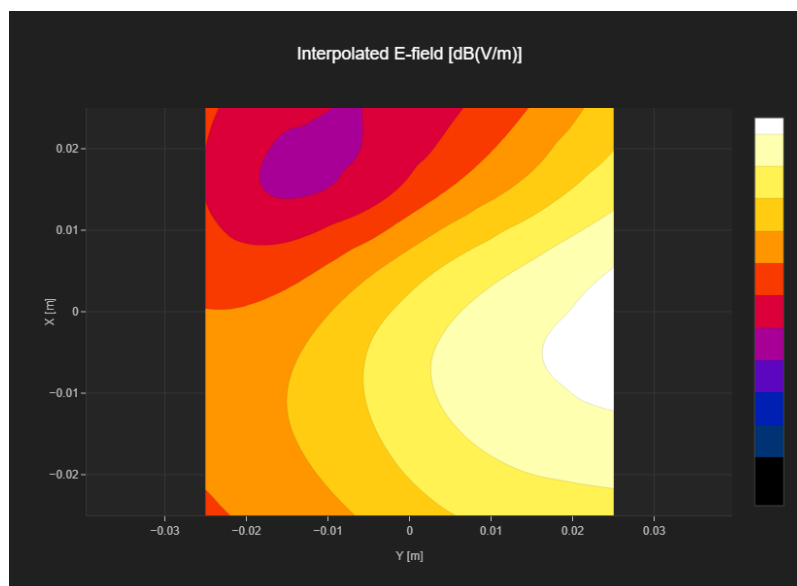
Band Name	Communication Systems Name	Channel	Frequency [MHz]
PCS 1900	GSM-FDD (TDMA, GMSK)	661	1880.0

## Grid Settings

Extent X [mm]	Extent Y [mm]	Step X [mm]	Step Y [mm]	Distance [mm]
50.0	50.0	10.0	10.0	15.0

## Results

E <sub>max</sub> [dB(V/m)]	E <sub>avg50x50 max</sub> [dB(V/m)]	MIF [dB]	RFail [dB(V/m)]
27.89	22.99	3.63	26.62





# Plot No.9

Measurement performed on October 10, 2023

## Device Under Test

Manufacturer	Model	Dimensions[mm]	Speaker Position [mm]
Google	GKV4X	151.0 x 72.0 x 10.0	150.0

## Hardware Setup

Probe Name	Probe Calibration Date	DAE Name	DAE Calibration Date
EF3DV3 - SN4088	August 15, 2023	DAE4 Sn699	February 22, 2023

## Communication Systems

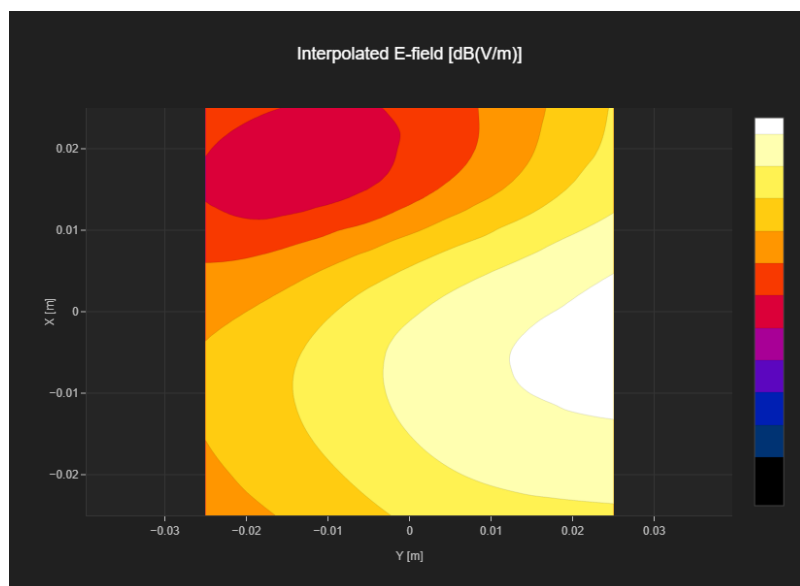
Band Name	Communication Systems Name	Channel	Frequency [MHz]
PCS 1900	GSM-FDD (TDMA, GMSK)	810	1909.8

## Grid Settings

Extent X [mm]	Extent Y [mm]	Step X [mm]	Step Y [mm]	Distance [mm]
50.0	50.0	10.0	10.0	15.0

## Results

E <sub>max</sub> [dB(V/m)]	E <sub>avg50x50 max</sub> [dB(V/m)]	MIF [dB]	RFail [dB(V/m)]
27.15	23.01	3.63	26.64



# Plot No.10

Measurement performed on October 10, 2023

## Device Under Test

Manufacturer	Model	Dimensions[mm]	Speaker Position [mm]
Google	GKV4X	151.0 x 72.0 x 10.0	150.0

## Hardware Setup

Probe Name	Probe Calibration Date	DAE Name	DAE Calibration Date
EF3DV3 - SN4088	August 15, 2023	DAE4 Sn699	February 22, 2023

## Communication Systems

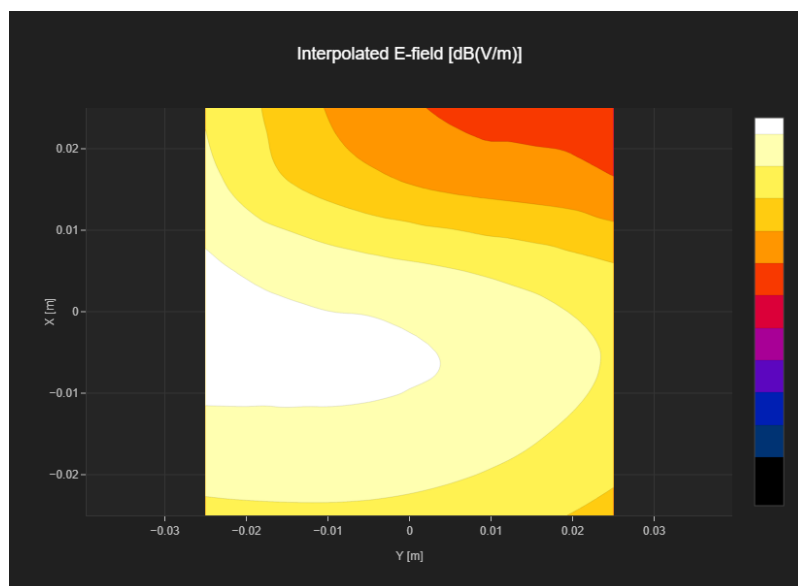
Band Name	Communication Systems Name	Channel	Frequency [MHz]
PCS 1900	GSM-FDD (TDMA, GMSK)	512	1850.2

## Grid Settings

Extent X [mm]	Extent Y [mm]	Step X [mm]	Step Y [mm]	Distance [mm]
50.0	50.0	10.0	10.0	15.0

## Results

E <sub>max</sub> [dB(V/m)]	E <sub>avg50x50 max</sub> [dB(V/m)]	MIF [dB]	RFail [dB(V/m)]
24.06	21.39	3.63	25.02



# Plot No.11

Measurement performed on October 10, 2023

## Device Under Test

Manufacturer	Model	Dimensions[mm]	Speaker Position [mm]
Google	GKV4X	151.0 x 72.0 x 10.0	150.0

## Hardware Setup

Probe Name	Probe Calibration Date	DAE Name	DAE Calibration Date
EF3DV3 - SN4088	August 15, 2023	DAE4 Sn699	February 22, 2023

## Communication Systems

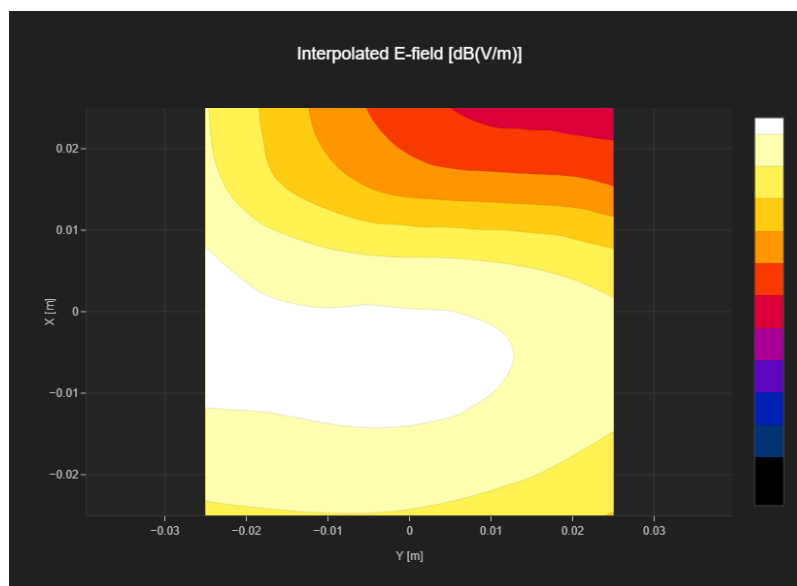
Band Name	Communication Systems Name	Channel	Frequency [MHz]
PCS 1900	GSM-FDD (TDMA, GMSK)	661	1880.0

## Grid Settings

Extent X [mm]	Extent Y [mm]	Step X [mm]	Step Y [mm]	Distance [mm]
50.0	50.0	10.0	10.0	15.0

## Results

E <sub>max</sub> [dB(V/m)]	E <sub>avg50x50 max</sub> [dB(V/m)]	MIF [dB]	RFail [dB(V/m)]
25.82	23.44	3.63	27.07



# Plot No.12

Measurement performed on October 10, 2023

## Device Under Test

Manufacturer	Model	Dimensions[mm]	Speaker Position [mm]
Google	GKV4X	151.0 x 72.0 x 10.0	150.0

## Hardware Setup

Probe Name	Probe Calibration Date	DAE Name	DAE Calibration Date
EF3DV3 - SN4088	August 15, 2023	DAE4 Sn699	February 22, 2023

## Communication Systems

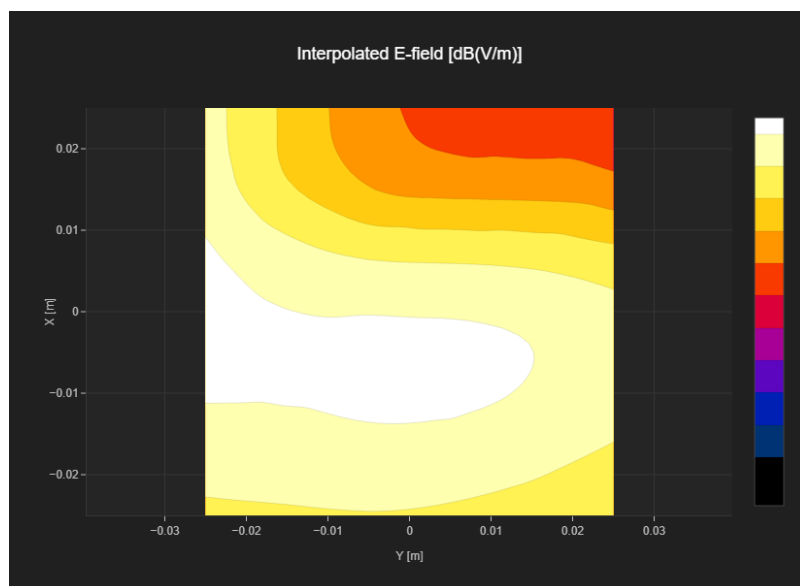
Band Name	Communication Systems Name	Channel	Frequency [MHz]
PCS 1900	GSM-FDD (TDMA, GMSK)	810	1909.8

## Grid Settings

Extent X [mm]	Extent Y [mm]	Step X [mm]	Step Y [mm]	Distance [mm]
50.0	50.0	10.0	10.0	15.0

## Results

E <sub>max</sub> [dB(V/m)]	E <sub>avg50x50 max</sub> [dB(V/m)]	MIF [dB]	RFail [dB(V/m)]
25.75	23.53	3.63	27.16



# Plot No.13

Measurement performed on October 10, 2023

## Device Under Test

Manufacturer	Model	Dimensions[mm]	Speaker Position [mm]
Google	GKV4X	151.0 x 72.0 x 10.0	150.0

## Hardware Setup

Probe Name	Probe Calibration Date	DAE Name	DAE Calibration Date
EF3DV3 - SN4088	August 15, 2023	DAE4 Sn699	February 22, 2023

## Communication Systems

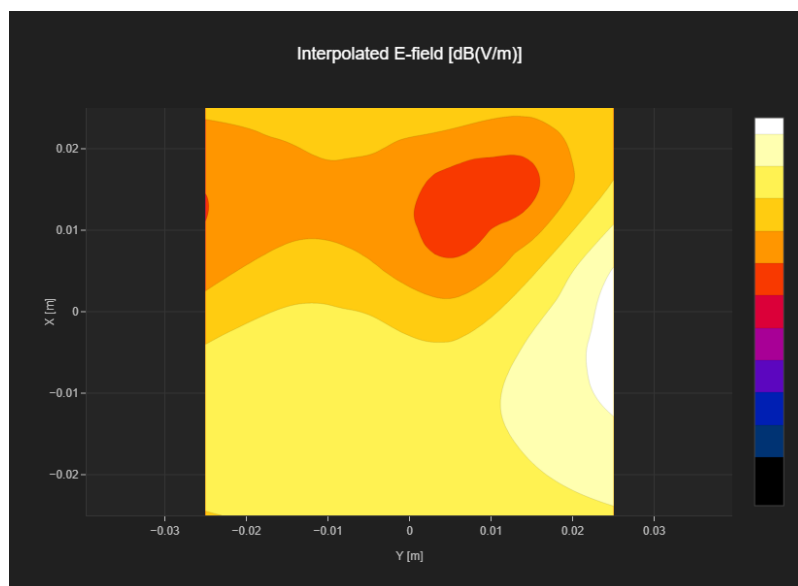
Band Name	Communication Systems Name	Channel	Frequency [MHz]
Band 41, E-UTRA/TDD	LTE-TDD (SC-FDMA, 1 RB, 20 MHz, 16-QAM)	39750	2506.0

## Grid Settings

Extent X [mm]	Extent Y [mm]	Step X [mm]	Step Y [mm]	Distance [mm]
50.0	50.0	10.0	10.0	15.0

## Results

E <sub>max</sub> [dB(V/m)]	E <sub>avg50x50 max</sub> [dB(V/m)]	MIF [dB]	RFail [dB(V/m)]
27.19	22.97	-1.44	21.53



# Plot No.14

Measurement performed on October 10, 2023

## Device Under Test

Manufacturer	Model	Dimensions[mm]	Speaker Position [mm]
Google	GKV4X	151.0 x 72.0 x 10.0	150.0

## Hardware Setup

Probe Name	Probe Calibration Date	DAE Name	DAE Calibration Date
EF3DV3 - SN4088	August 15, 2023	DAE4 Sn699	February 22, 2023

## Communication Systems

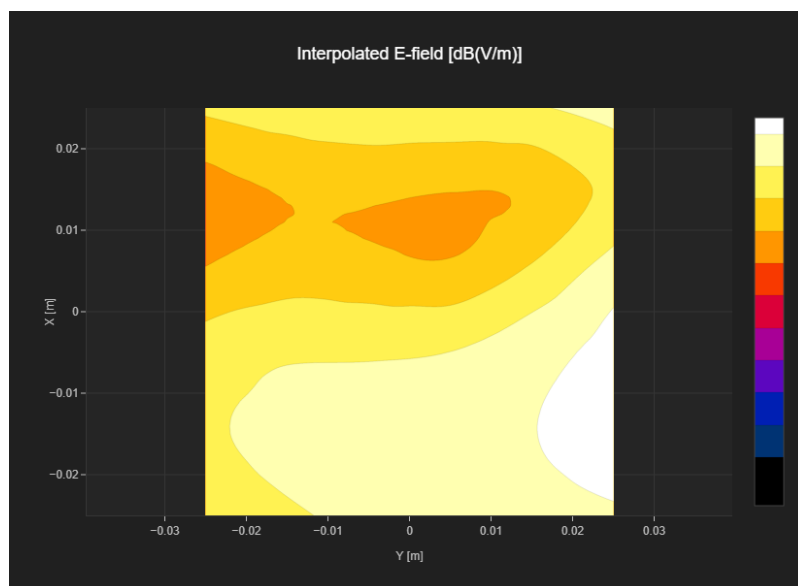
Band Name	Communication Systems Name	Channel	Frequency [MHz]
Band 41, E-UTRA/TDD	LTE-TDD (SC-FDMA, 1 RB, 20 MHz, 16-QAM)	40620	2593.0

## Grid Settings

Extent X [mm]	Extent Y [mm]	Step X [mm]	Step Y [mm]	Distance [mm]
50.0	50.0	10.0	10.0	15.0

## Results

E <sub>max</sub> [dB(V/m)]	E <sub>avg50x50 max</sub> [dB(V/m)]	MIF [dB]	RFail [dB(V/m)]
27.05	23.91	-1.44	22.47



# Plot No.15

Measurement performed on October 10, 2023

## Device Under Test

Manufacturer	Model	Dimensions[mm]	Speaker Position [mm]
Google	GKV4X	151.0 x 72.0 x 10.0	150.0

## Hardware Setup

Probe Name	Probe Calibration Date	DAE Name	DAE Calibration Date
EF3DV3 - SN4088	August 15, 2023	DAE4 Sn699	February 22, 2023

## Communication Systems

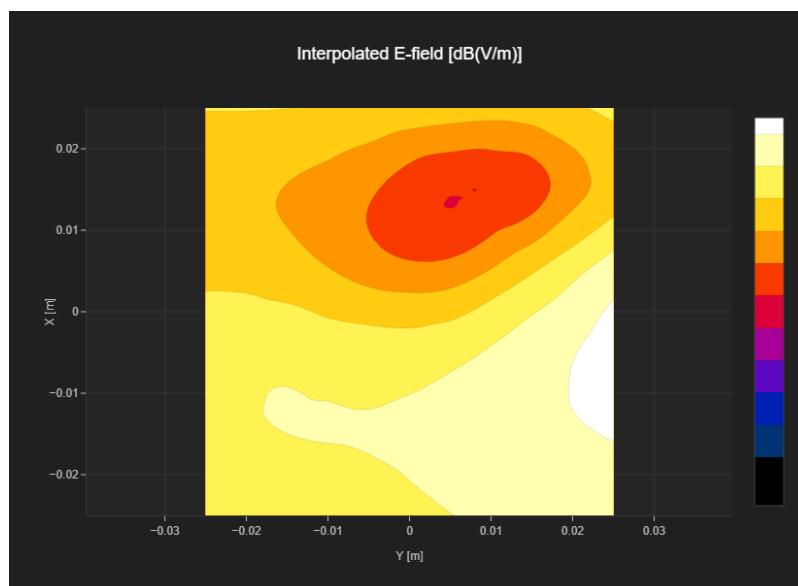
Band Name	Communication Systems Name	Channel	Frequency [MHz]
Band 41, E-UTRA/TDD	LTE-TDD (SC-FDMA, 1 RB, 20 MHz, 16-QAM)	41490	2680.0

## Grid Settings

Extent X [mm]	Extent Y [mm]	Step X [mm]	Step Y [mm]	Distance [mm]
50.0	50.0	10.0	10.0	15.0

## Results

E <sub>max</sub> [dB(V/m)]	E <sub>avg50x50 max</sub> [dB(V/m)]	MIF [dB]	RFail [dB(V/m)]
29.28	25.38	-1.44	23.94



# Plot No.16

Measurement performed on October 10, 2023

## Device Under Test

Manufacturer	Model	Dimensions[mm]	Speaker Position [mm]
Google	GKV4X	151.0 x 72.0 x 10.0	150.0

## Hardware Setup

Probe Name	Probe Calibration Date	DAE Name	DAE Calibration Date
EF3DV3 - SN4088	August 15, 2023	DAE4 Sn699	February 22, 2023

## Communication Systems

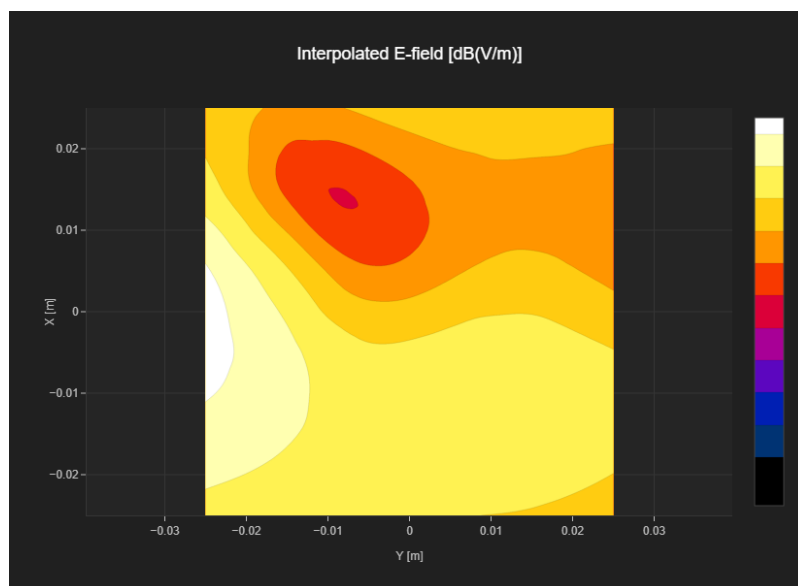
Band Name	Communication Systems Name	Channel	Frequency [MHz]
Band 41, E-UTRA/TDD	LTE-TDD (SC-FDMA, 1 RB, 20 MHz, 16-QAM)	39750	2506.0

## Grid Settings

Extent X [mm]	Extent Y [mm]	Step X [mm]	Step Y [mm]	Distance [mm]
50.0	50.0	10.0	10.0	15.0

## Results

E <sub>max</sub> [dB(V/m)]	E <sub>avg50x50 max</sub> [dB(V/m)]	MIF [dB]	RFail [dB(V/m)]
28.42	24.04	-1.44	22.6





# Plot No.17

Measurement performed on October 10, 2023

## Device Under Test

Manufacturer	Model	Dimensions[mm]	Speaker Position [mm]
Google	GKV4X	151.0 x 72.0 x 10.0	150.0

## Hardware Setup

Probe Name	Probe Calibration Date	DAE Name	DAE Calibration Date
EF3DV3 - SN4088	August 15, 2023	DAE4 Sn699	February 22, 2023

## Communication Systems

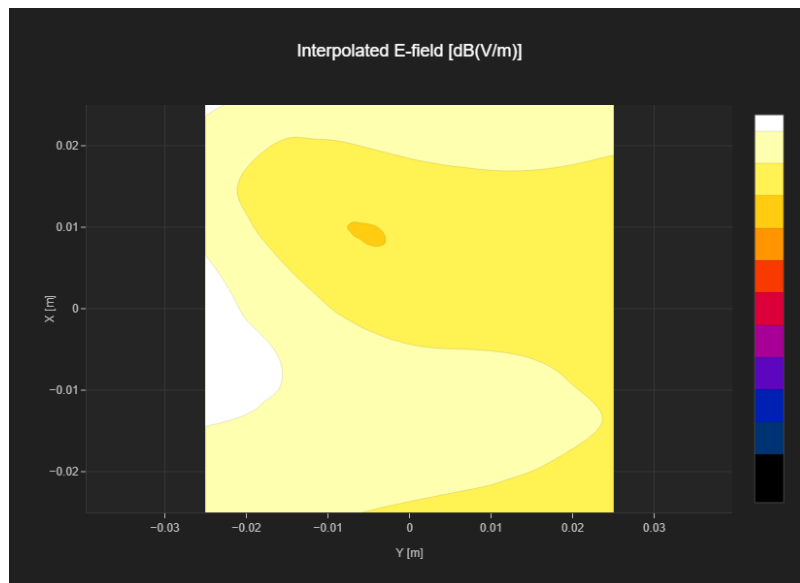
Band Name	Communication Systems Name	Channel	Frequency [MHz]
Band 41, E-UTRA/TDD	LTE-TDD (SC-FDMA, 1 RB, 20 MHz, 16-QAM)	40620	2593.0

## Grid Settings

Extent X [mm]	Extent Y [mm]	Step X [mm]	Step Y [mm]	Distance [mm]
50.0	50.0	10.0	10.0	15.0

## Results

E <sub>max</sub> [dB(V/m)]	E <sub>avg50x50 max</sub> [dB(V/m)]	MIF [dB]	RFail [dB(V/m)]
24.25	21.92	-1.44	20.48



# Plot No.18

Measurement performed on October 10, 2023

## Device Under Test

Manufacturer	Model	Dimensions[mm]	Speaker Position [mm]
Google	GKV4X	151.0 x 72.0 x 10.0	150.0

## Hardware Setup

Probe Name	Probe Calibration Date	DAE Name	DAE Calibration Date
EF3DV3 - SN4088	August 15, 2023	DAE4 Sn699	February 22, 2023

## Communication Systems

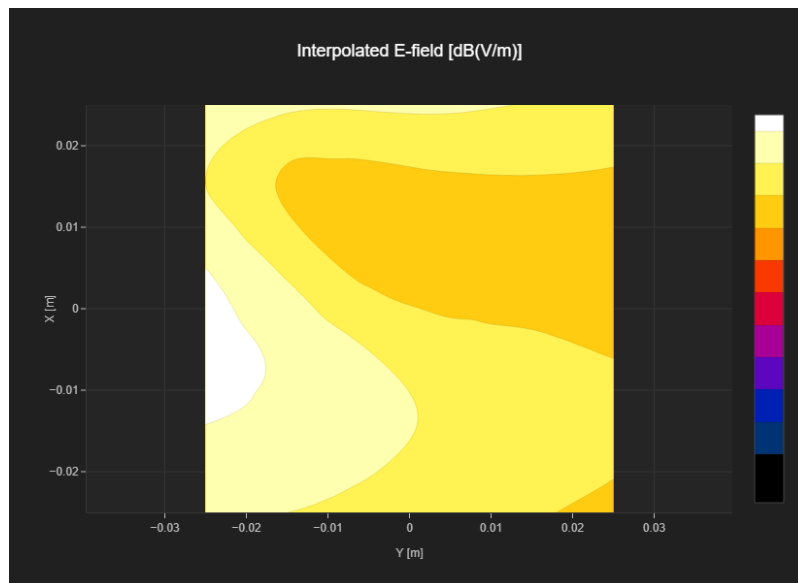
Band Name	Communication Systems Name	Channel	Frequency [MHz]
Band 41, E-UTRA/TDD	LTE-TDD (SC-FDMA, 1 RB, 20 MHz, 16-QAM)	41490	2680.0

## Grid Settings

Extent X [mm]	Extent Y [mm]	Step X [mm]	Step Y [mm]	Distance [mm]
50.0	50.0	10.0	10.0	15.0

## Results

E <sub>max</sub> [dB(V/m)]	E <sub>avg50x50 max</sub> [dB(V/m)]	MIF [dB]	RFail [dB(V/m)]
26.19	22.99	-1.44	21.55



# Plot No.19

Measurement performed on October 10, 2023

## Device Under Test

Manufacturer	Model	Dimensions[mm]	Speaker Position [mm]
Google	GKV4X	152.0 x 73.0 x 9.0	151.0

## Hardware Setup

Probe Name	Probe Calibration Date	DAE Name	DAE Calibration Date
EF3DV3 - SN4088	August 15, 2023	DAE4 Sn699	February 22, 2023

## Communication Systems

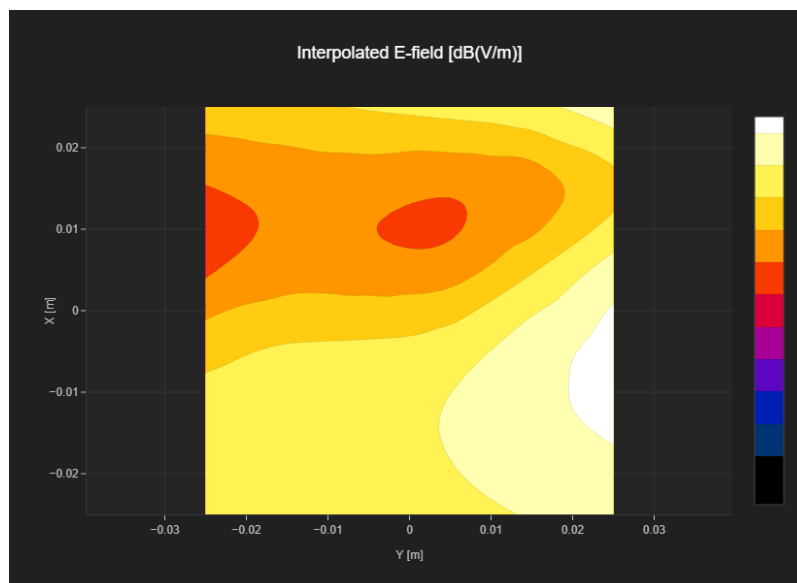
Band Name	Communication Systems Name	Channel	Frequency [MHz]
Band n41	5G NR (DFT-s-OFDM, 1 RB, 100 MHz, QPSK, 30 kHz)	518598	2592.99

## Grid Settings

Extent X [mm]	Extent Y [mm]	Step X [mm]	Step Y [mm]	Distance [mm]
50.0	50.0	10.0	10.0	15.0

## Results

E <sub>max</sub> [dB(V/m)]	E <sub>avg50x50 max</sub> [dB(V/m)]	MIF [dB]	R <sub>Fail</sub> [dB(V/m)]
27.91	23.79	-1.64	22.15



# Plot No.20

Measurement performed on October 10, 2023

## Device Under Test

Manufacturer	Model	Dimensions[mm]	Speaker Position [mm]
Google	GKV4X	152.0 x 73.0 x 9.0	151.0

## Hardware Setup

Probe Name	Probe Calibration Date	DAE Name	DAE Calibration Date
EF3DV3 - SN4088	August 15, 2023	DAE4 Sn699	February 22, 2023

## Communication Systems

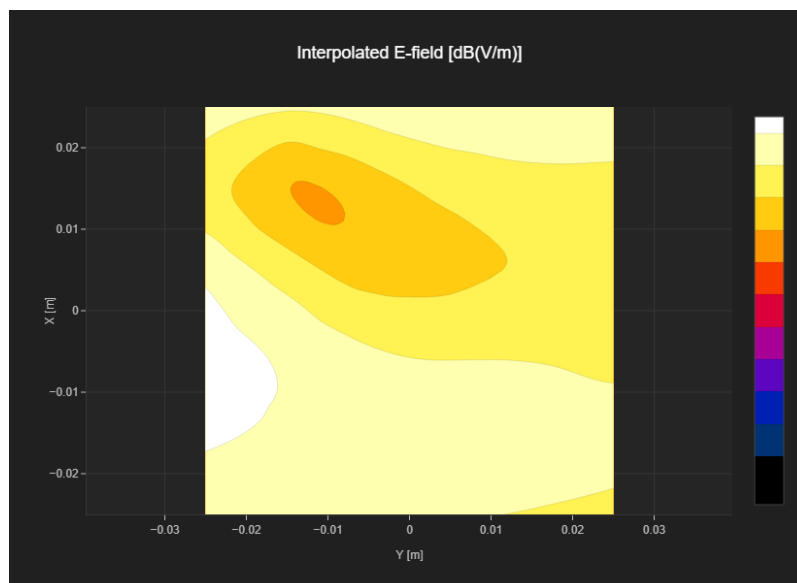
Band Name	Communication Systems Name	Channel	Frequency [MHz]
Band n41	5G NR (DFT-s-OFDM, 1 RB, 100 MHz, QPSK, 30 kHz)	518598	2592.99

## Grid Settings

Extent X [mm]	Extent Y [mm]	Step X [mm]	Step Y [mm]	Distance [mm]
50.0	50.0	10.0	10.0	15.0

## Results

E <sub>max</sub> [dB(V/m)]	E <sub>avg50x50 max</sub> [dB(V/m)]	MIF [dB]	RFail [dB(V/m)]
25.41	22.75	-1.64	21.11



# Plot No.21

Measurement performed on October 10, 2023

## Device Under Test

Manufacturer	Model	Dimensions[mm]	Speaker Position [mm]
Google	GKV4X	152.0 x 73.0 x 9.0	151.0

## Hardware Setup

Probe Name	Probe Calibration Date	DAE Name	DAE Calibration Date
EF3DV3 - SN4088	August 15, 2023	DAE4 Sn699	February 22, 2023

## Communication Systems

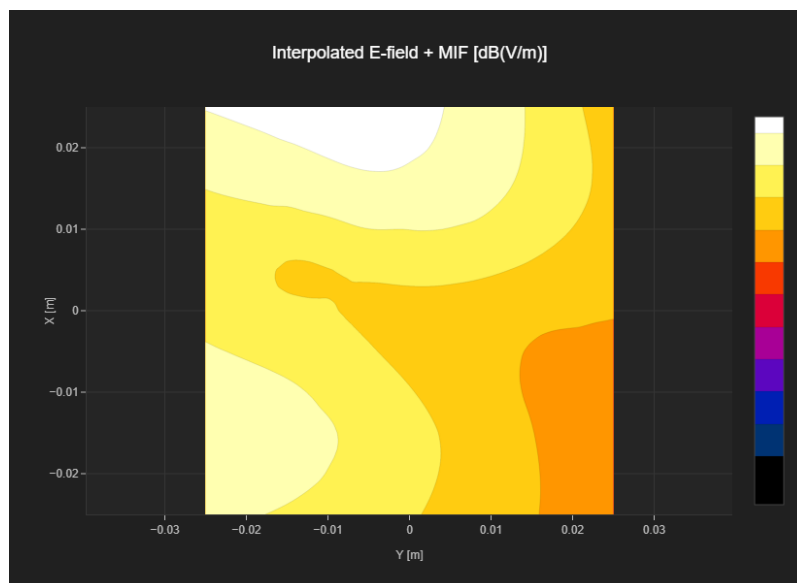
Band Name	Communication Systems Name	Channel	Frequency [MHz]
Band n77	5G NR (DFT-s-OFDM, 1 RB, 100 MHz, QPSK, 30 kHz)	656000	3840.0

## Grid Settings

Extent X [mm]	Extent Y [mm]	Step X [mm]	Step Y [mm]	Distance [mm]
50.0	50.0	10.0	10.0	15.0

## Results

E <sub>max</sub> [dB(V/m)]	E <sub>avg50x50 max</sub> [dB(V/m)]	MIF [dB]	RFail [dB(V/m)]
29.78	26.49	-1.64	24.85



# Plot No.22

Measurement performed on October 10, 2023

## Device Under Test

Manufacturer	Model	Dimensions[mm]	Speaker Position [mm]
Google	GKV4X	152.0 x 73.0 x 9.0	151.0

## Hardware Setup

Probe Name	Probe Calibration Date	DAE Name	DAE Calibration Date
EF3DV3 - SN4088	August 15, 2023	DAE4 Sn699	February 22, 2023

## Communication Systems

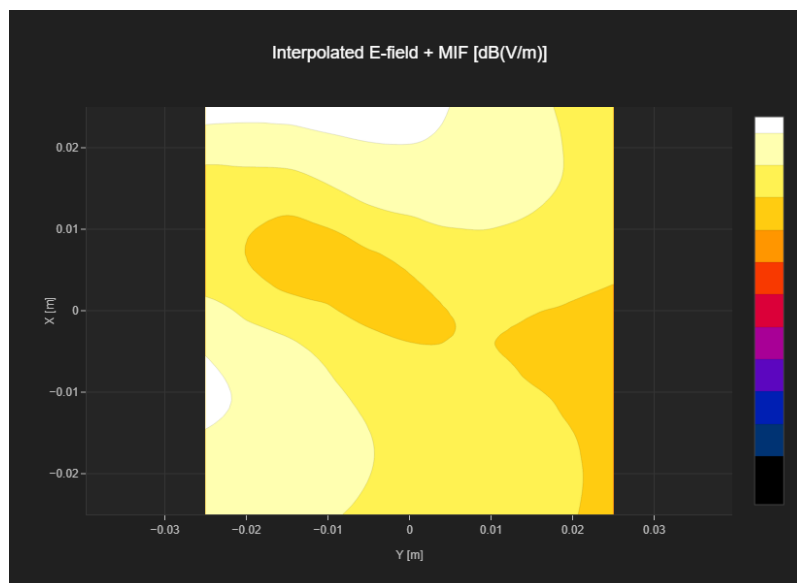
Band Name	Communication Systems Name	Channel	Frequency [MHz]
Band n77	5G NR (DFT-s-OFDM, 1 RB, 100 MHz, QPSK, 30 kHz)	633332	3499.98

## Grid Settings

Extent X [mm]	Extent Y [mm]	Step X [mm]	Step Y [mm]	Distance [mm]
50.0	50.0	10.0	10.0	15.0

## Results

E <sub>max</sub> [dB(V/m)]	E <sub>avg50x50 max</sub> [dB(V/m)]	MIF [dB]	RFail [dB(V/m)]
28.01	25.2	-1.64	23.56



# Plot No.23

Measurement performed on October 10, 2023

## Device Under Test

Manufacturer	Model	Dimensions[mm]	Speaker Position [mm]
google	GKV4X	152.0 x 73.0 x 9.0	151.0

## Hardware Setup

Probe Name	Probe Calibration Date	DAE Name	DAE Calibration Date
EF3DV3 - SN4088	August 15, 2023	DAE4 Sn699	February 22, 2023

## Communication Systems

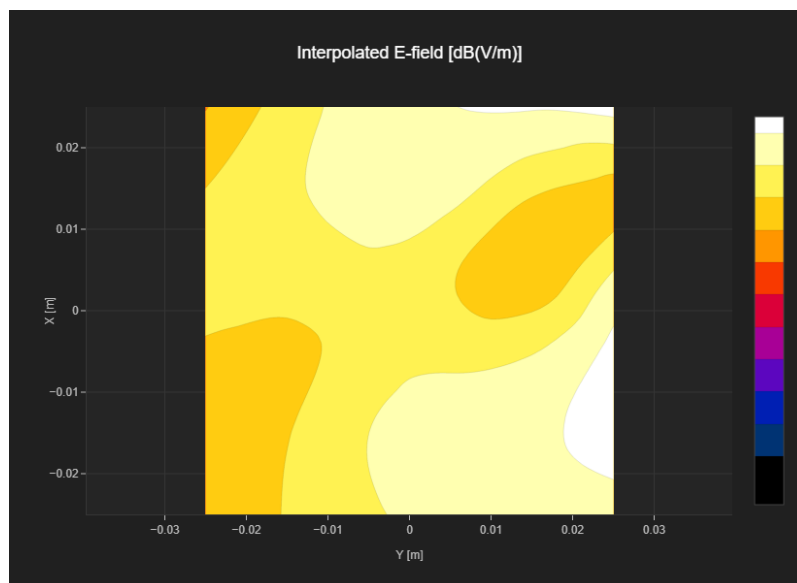
Band Name	Communication Systems Name	Channel	Frequency [MHz]
Band n77	5G NR (DFT-s-OFDM, 1 RB, 100 MHz, QPSK, 30 kHz)	656000	3840.0

## Grid Settings

Extent X [mm]	Extent Y [mm]	Step X [mm]	Step Y [mm]	Distance [mm]
50.0	50.0	10.0	10.0	15.0

## Results

E <sub>max</sub> [dB(V/m)]	E <sub>avg50x50 max</sub> [dB(V/m)]	MIF [dB]	RFail [dB(V/m)]
25.7	22.91	-1.64	21.27



# Plot No.24

Measurement performed on October 10, 2023

## Device Under Test

Manufacturer	Model	Dimensions[mm]	Speaker Position [mm]
Google	GKV4X	152.0 x 73.0 x 9.0	151.0

## Hardware Setup

Probe Name	Probe Calibration Date	DAE Name	DAE Calibration Date
EF3DV3 - SN4088	August 15, 2023	DAE4 Sn699	February 22, 2023

## Communication Systems

Band Name	Communication Systems Name	Channel	Frequency [MHz]
Band n77	5G NR (DFT-s-OFDM, 1 RB, 100 MHz, QPSK, 30 kHz)	633332	3499.98

## Grid Settings

Extent X [mm]	Extent Y [mm]	Step X [mm]	Step Y [mm]	Distance [mm]
50.0	50.0	10.0	10.0	15.0

## Results

E <sub>max</sub> [dB(V/m)]	E <sub>avg50x50 max</sub> [dB(V/m)]	MIF [dB]	RFail [dB(V/m)]
27.3	23.59	-1.64	21.95

