

# U-NII-5: IEEE 802.11ax (160MHz, MCS0, 99pc duty cycle), FRONT

## Exposure Conditions

Band	U-NII-5	Phantom Section	5G
Frequency [MHz]   Channel Number	6185.0   47	Conversion Factor	1.0
Group   UID	WLAN, 10755-AAC	Position   Test Distance [mm]	FRONT   2.00

## Hardware Setup

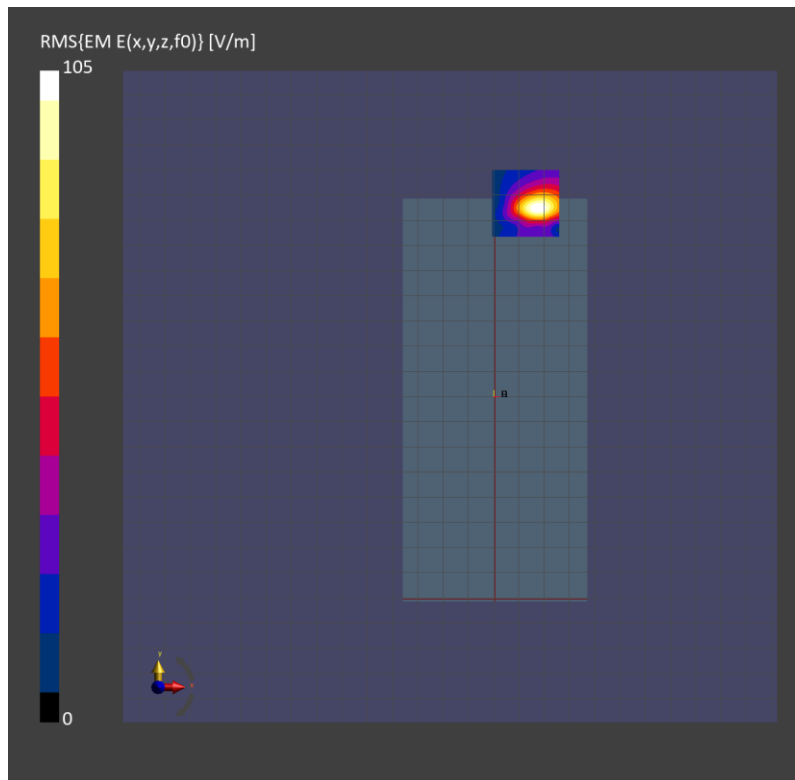
Probe   Calibration Date	EUmmWV4 - SN9589_F1-55GHz   2023-09-05	Phantom	mmWave   xxxx
DAE   Calibration Date	DAE4 Sn1257   2023-09-12	Medium	Air   -
Software Version	3.2.2.2358		

## Scan Setup

Scan Type	5G Scan	Grid Extents [mm]	25.0 x 25.0
Grid Steps [lambda]	0.04211272847496038 x 0.04211272847496038	Sensor Surface [mm]	2.0

## Measurement Results

Avg. Area [cm <sup>2</sup> ]	4.00
psPDn+ [W/m <sup>2</sup> ]	2.08
psPDtot+ [W/m <sup>2</sup> ]	4.03
psPDmod+ [W/m <sup>2</sup> ]	8.19
E <sub>max</sub> [V/m]	105
H <sub>max</sub> [A/m]	0.447
Power Drift [dB]	0.09



# U-NII-6: IEEE 802.11ax (160MHz, MCS0, 99pc duty cycle), EDGE LEFT

## Exposure Conditions

Band	U-NII-6	Phantom Section	5G
Frequency [MHz]   Channel Number	6505.0   111	Conversion Factor	1.0
Group   UID	WLAN, 10755-AAC	Position   Test Distance [mm]	EDGE LEFT   2.00

## Hardware Setup

Probe   Calibration Date	EUmmWV4 - SN9589_F1-55GHz   2023-09-05	Phantom	mmWave   xxxx
DAE   Calibration Date	DAE4 Sn1257   2023-09-12	Medium	Air   -
Software Version	3.2.2.2358		

## Scan Setup

Scan Type	5G Scan	Grid Extents [mm]	25.0 x 25.0
Grid Steps [lambda]	0.04429156002095672 x 0.04429156002095672	Sensor Surface [mm]	2.0

## Measurement Results

Avg. Area [cm <sup>2</sup> ]	4.00
psPDn+ [W/m <sup>2</sup> ]	2.59
psPDtot+ [W/m <sup>2</sup> ]	5.87
psPDmod+ [W/m <sup>2</sup> ]	8.69
E <sub>max</sub> [V/m]	146
Power Drift [dB]	0.07

