

Validation band: CW, FRONT

Exposure Conditions

Band	Validation band	Phantom Section	5G
Frequency [MHz] Channel Number	10000.0 10000	Conversion Factor	1.0
Group UID	CW, 0--	Position Test Distance [mm]	FRONT 10.00

Hardware Setup

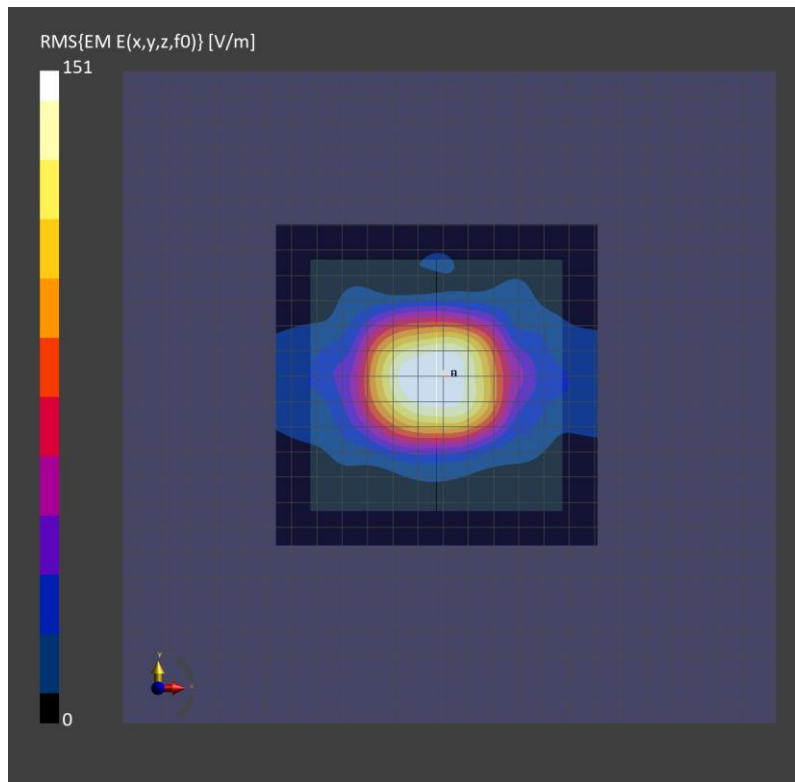
Probe Calibration Date	EUmmWV4 - SN9589_F1-55GHz 2023-09-05	Phantom	mmWave xxxx
DAE Calibration Date	DAE4 Sn1257 2023-09-12	Medium	Air -
Software Version	3.2.2.2358		

Scan Setup

Scan Type	5G Scan	Grid Extents [mm]	120.0 x 120.0
Grid Steps [lambda]	0.25 x 0.25	Sensor Surface [mm]	10.0

Measurement Results

Avg. Area [cm ²]	4.00
psPDn+ [W/m ²]	56.3
psPDtot+ [W/m ²]	56.7
psPDmod+ [W/m ²]	56.9
E _{max} [V/m]	151
H _{max} [A/m]	0.409
Power Drift [dB]	-0.03



Validation band: CW, FRONT

Exposure Conditions

Band	Validation band	Phantom Section	5G
Frequency [MHz] Channel Number	10000.0 10000	Conversion Factor	1.0
Group UID	CW, 0--	Position Test Distance [mm]	FRONT 10.00

Hardware Setup

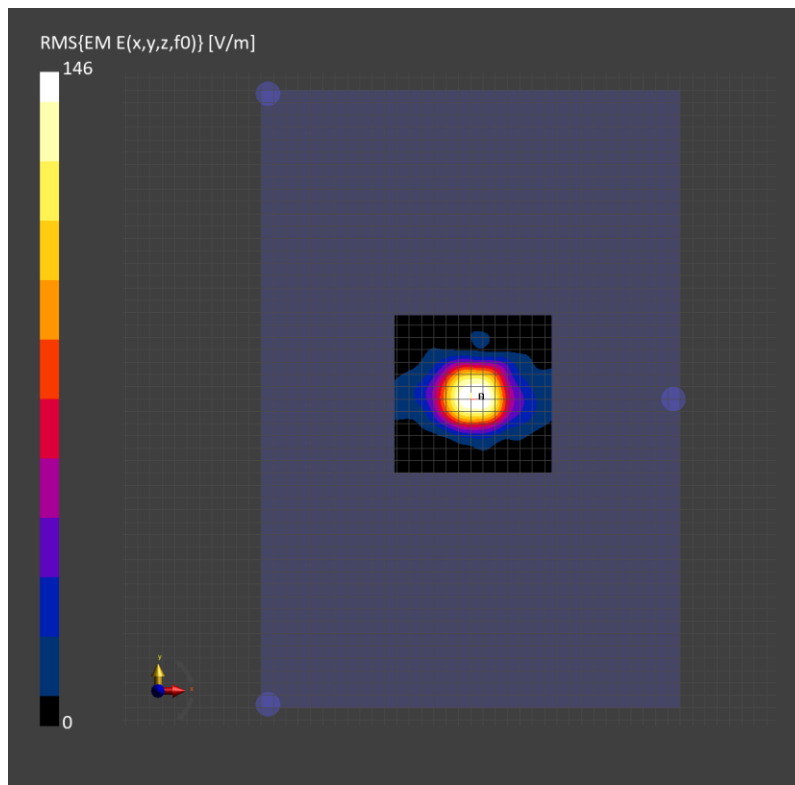
Probe Calibration Date	EUmmWV4 - SN9589_F1-55GHz 2023-09-05	Phantom	mmWave xxxx
DAE Calibration Date	DAE4 Sn1257 2023-09-12	Medium	Air -
Software Version	3.2.2.2358		

Scan Setup

Scan Type	5G Scan	Grid Extents [mm]	120.0 x 120.0
Grid Steps [lambda]	0.25 x 0.25	Sensor Surface [mm]	10.0

Measurement Results

Avg. Area [cm ²]	4.00
psPDn+ [W/m ²]	51.9
psPDtot+ [W/m ²]	52.9
psPDmod+ [W/m ²]	53.2
E _{max} [V/m]	146
Power Drift [dB]	-0.01



Validation band: CW, FRONT

Exposure Conditions

Band	Validation band	Phantom Section	5G
Frequency [MHz] Channel Number	10000.0 10000	Conversion Factor	1.0
Group UID	CW, 0--	Position Test Distance [mm]	FRONT 10.00

Hardware Setup

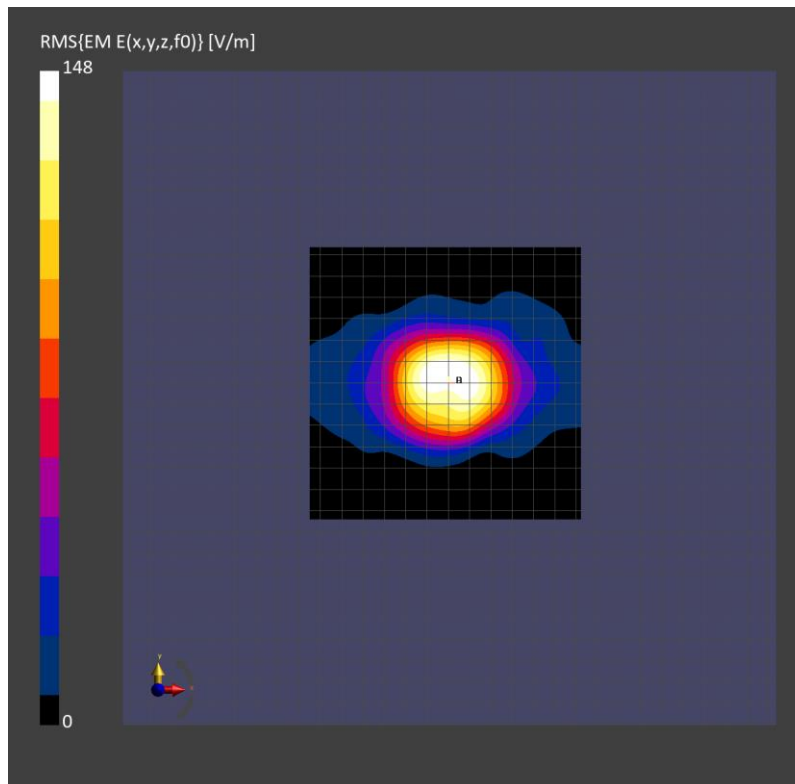
Probe Calibration Date	EUmmWV4 - SN9589_F1-55GHz 2023-09-05	Phantom	mmWave xxxx
DAE Calibration Date	DAE4 Sn1257 2023-09-12	Medium	Air -
Software Version	3.2.2.2358		

Scan Setup

Scan Type	5G Scan	Grid Extents [mm]	120.0 x 120.0
Grid Steps [lambda]	0.25 x 0.25	Sensor Surface [mm]	10.0

Measurement Results

Avg. Area [cm ²]	4.00
psPDn+ [W/m ²]	52.5
psPDtot+ [W/m ²]	52.9
psPDmod+ [W/m ²]	53.2
E _{max} [V/m]	148
H _{max} [A/m]	0.406
Power Drift [dB]	-0.00



Validation band: CW, FRONT

Exposure Conditions

Band	Validation band	Phantom Section	5G
Frequency [MHz] Channel Number	10000.0 10000	Conversion Factor	1.0
Group UID	CW, 0--	Position Test Distance [mm]	FRONT 10.00

Hardware Setup

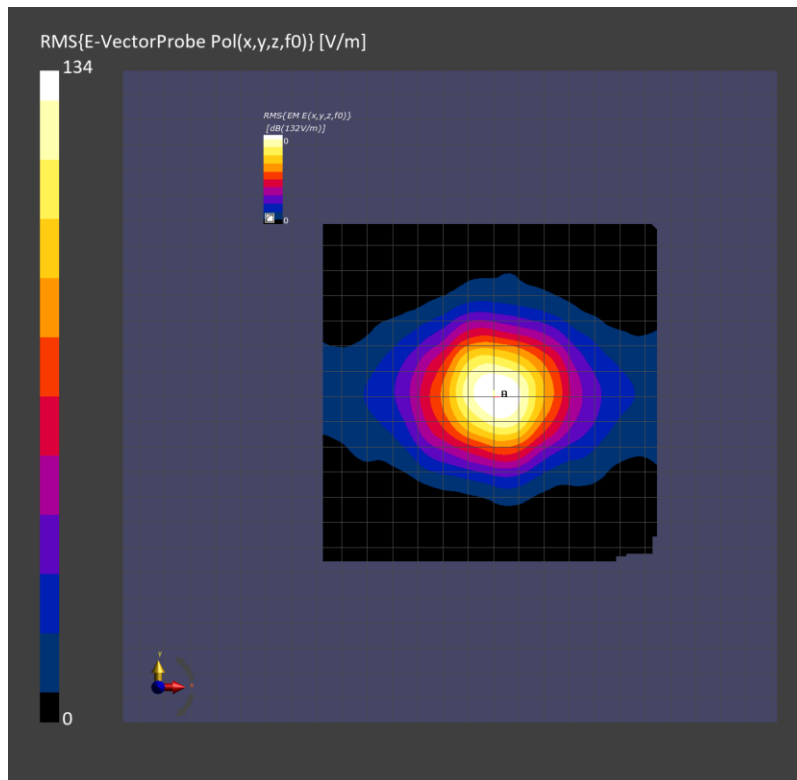
Probe Calibration Date	EUmmWV4 - SN9589_F1-55GHz 2023-09-05	Phantom	mmWave xxxx
DAE Calibration Date	DAE4 Sn1257 2023-09-12	Medium	Air -
Software Version	3.2.2.2358		

Scan Setup

Scan Type	5G Scan	Grid Extents [mm]	120.0 x 120.0
Grid Steps [lambda]	0.25 x 0.25	Sensor Surface [mm]	10.0

Measurement Results

Avg. Area [cm ²]	4.00
psPDn+ [W/m ²]	41.5
psPDtot+ [W/m ²]	41.7
psPDmod+ [W/m ²]	42.0
E _{max} [V/m]	132
H _{max} [A/m]	0.362
Power Drift [dB]	-0.02



Validation band: CW, FRONT

Exposure Conditions

Band	Validation band	Phantom Section	5G
Frequency [MHz] Channel Number	10000.0 10000	Conversion Factor	1.0
Group UID	CW, 0--	Position Test Distance [mm]	FRONT 10.00

Hardware Setup

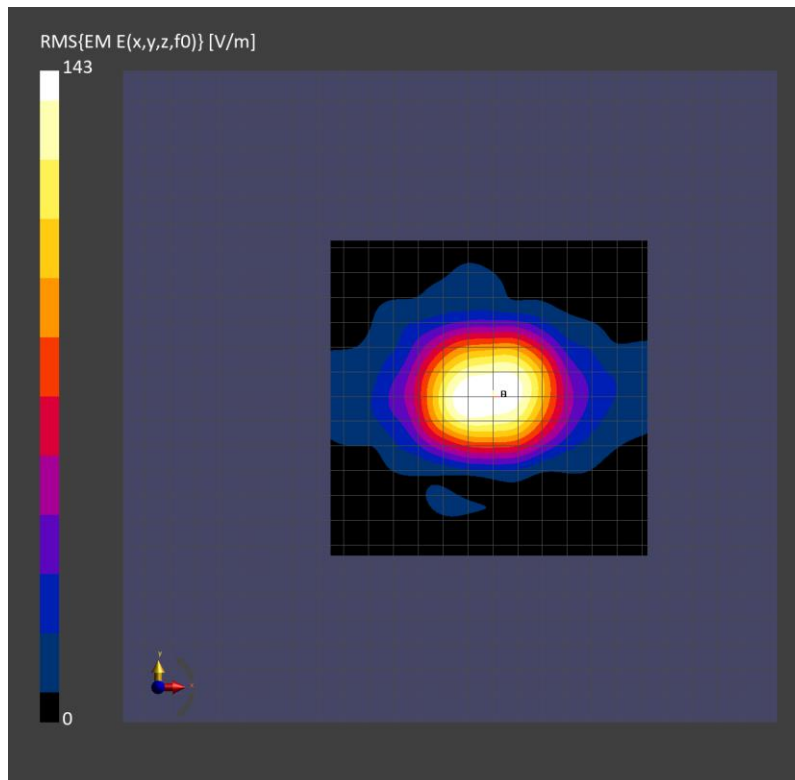
Probe Calibration Date	EUmmWV4 - SN9589_F1-55GHz 2023-09-05	Phantom	mmWave xxxx
DAE Calibration Date	DAE4 Sn1257 2023-09-12	Medium	Air -
Software Version	3.2.2.2358		

Scan Setup

Scan Type	5G Scan	Grid Extents [mm]	120.0 x 120.0
Grid Steps [lambda]	0.25 x 0.25	Sensor Surface [mm]	10.0

Measurement Results

Avg. Area [cm ²]	4.00
psPDn+ [W/m ²]	48.7
psPDtot+ [W/m ²]	49.0
psPDmod+ [W/m ²]	49.2
E _{max} [V/m]	143
H _{max} [A/m]	0.386
Power Drift [dB]	0.02



Validation band: CW, FRONT

Exposure Conditions

Band	Validation band	Phantom Section	5G
Frequency [MHz] Channel Number	10000.0 10000	Conversion Factor	1.0
Group UID	CW, 0--	Position Test Distance [mm]	FRONT 10.00

Hardware Setup

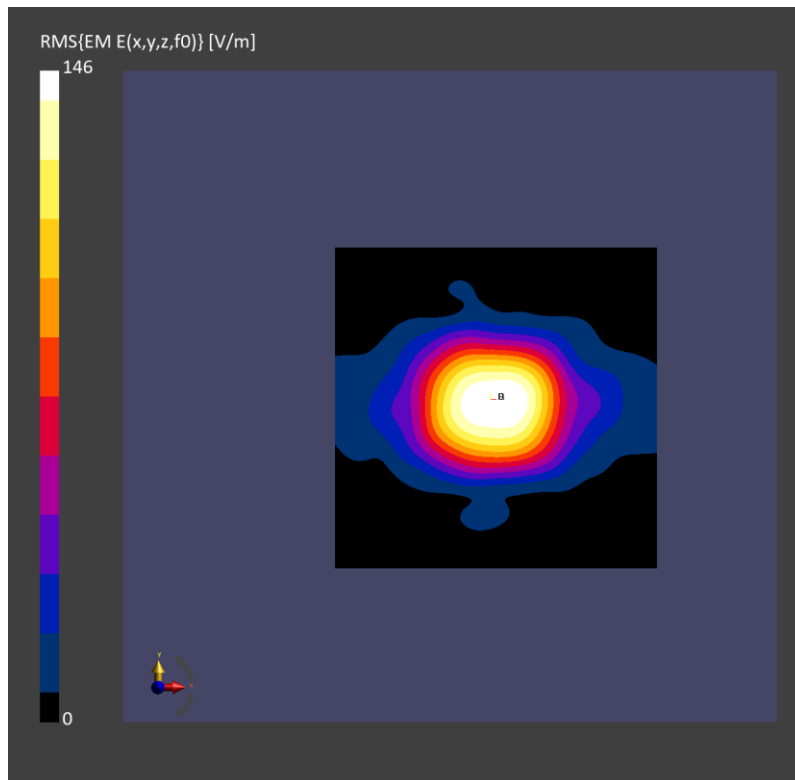
Probe Calibration Date	EUmmWV4 - SN9589_F1-55GHz 2023-09-05	Phantom	mmWave xxxx
DAE Calibration Date	DAE4 Sn1257 2023-09-12	Medium	Air -
Software Version	3.2.2.2358		

Scan Setup

Scan Type	5G Scan	Grid Extents [mm]	120.0 x 120.0
Grid Steps [lambda]	0.25 x 0.25	Sensor Surface [mm]	10.0

Measurement Results

Avg. Area [cm ²]	4.00
psPDn+ [W/m ²]	51.5
psPDtot+ [W/m ²]	51.9
psPDmod+ [W/m ²]	52.2
E _{max} [V/m]	146
H _{max} [A/m]	0.398
Power Drift [dB]	-0.01



Validation band: CW, FRONT

Exposure Conditions

Band	Validation band	Phantom Section	5G
Frequency [MHz] Channel Number	10000.0 10000	Conversion Factor	1.0
Group UID	CW, 0--	Position Test Distance [mm]	FRONT 10.00

Hardware Setup

Probe Calibration Date	EUmmWV4 - SN9589_F1-55GHz 2023-09-05	Phantom	mmWave xxxx
DAE Calibration Date	DAE4 Sn1257 2023-09-12	Medium	Air -
Software Version	3.2.2.2358		

Scan Setup

Scan Type	5G Scan	Grid Extents [mm]	120.0 x 120.0
Grid Steps [lambda]	0.25 x 0.25	Sensor Surface [mm]	10.0

Measurement Results

Avg. Area [cm ²]	4.00
psPDn+ [W/m ²]	61.6
psPDtot+ [W/m ²]	62.0
psPDmod+ [W/m ²]	62.4
E _{max} [V/m]	160
H _{max} [A/m]	0.440
Power Drift [dB]	-0.02

