

DASY8 Module WPT Measurement Report

Device under test

Info:
1_Back_0mm

Tool info

DASY software version:
DASY8 Module WPT 2.4.0.4346

Probe model, serial no. and configuration date:
MAGPy-8H3D+E3Dv2, WP000211, 2023/05/09

Software version:
2.0.49, backend: 2.2.3

Scan info

Center location:
x: 92.32 mm, y: -130.08 mm, z: 286.80 mm

Dimensions:
x: 169.0 mm, y: 257.0 mm, z: 36.7 mm

Resolution:
x: 7.33 mm, y: 7.33 mm, z: 7.33 mm

Completed on:
2024/03/08

Measurement results

Maximum H-field [RMS]:

MAGNITUDE: 674.88 mA/m

x: 152.44 mA/m, y: 62.77 mA/m, z: 654.43 mA/m

Maximum H-field location relative to DUT:

x: -33.00 mm, y: 18.33 mm, z: 8.50 mm

Maximum E-field [RMS]:

MAGNITUDE: 8.49 V/m

x: 241.38 mV/m, y: 285.72 mV/m, z: 8.48 V/m

Maximum E-field location relative to DUT:

x: 14.67 mm, y: 7.33 mm, z: 1.00 mm

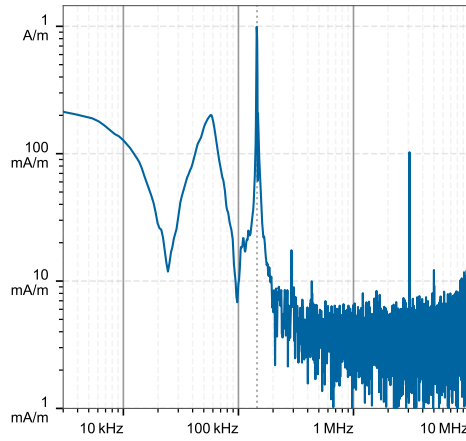
Distance to -20.0 dB boundary:

36.67 mm

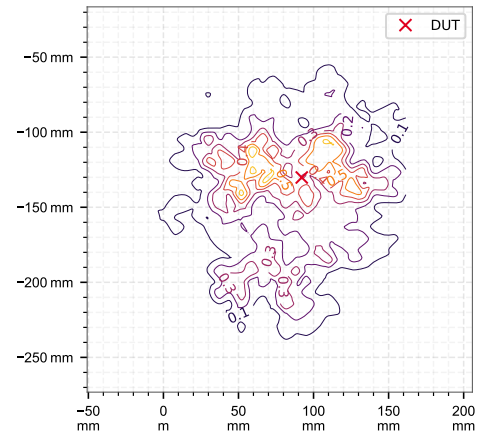
Offset relative to DUT:

x: 0.00 m, y: 0.00 m, z: 1.00 mm

H-field magnitude [RMS] at maximum location



H-field magnitude [RMS] at lowest plane



Incident fields, and induced quantities in the anatomical model

| Distance [mm] | Peak incident fields [RMS] | | Peak E_{ind} [V/m, RMS] | | | Peak J_{ind} [A/m ² , RMS] | psSAR [mW/kg] | | H-field extent |
|---------------|----------------------------|-----------------|---------------------------|---------|-----------|---|---------------|-----------|--------------------|
| | H_{inc} [A/m] | E_{inc} [V/m] | Cube avg. | Local | Line avg. | Surface avg. | 1g avg. | 10g avg. | -20 dB radius [mm] |
| 0.0 | 1.14 | 8.49 | 0.00885 | 0.00911 | 0.00908 | 0.00564 | 0.0000332 | 0.0000189 | 77.6 |

DASY8 Module WPT Measurement Report

Device under test

Info:
2_Right Side_0mm

Tool info

DASY software version:
DASY8 Module WPT 2.4.0.4346

Probe model, serial no. and configuration date:
MAGPy-8H3D+E3Dv2, WP000211, 2023/05/09

Software version:
2.0.49, backend: 2.2.3

Scan info

Center location:
x: 102.09 mm, y: -86.82 mm, z: 82.71 mm

Dimensions:
x: 169.0 mm, y: 257.0 mm, z: 36.7 mm

Resolution:
x: 7.33 mm, y: 7.33 mm, z: 7.33 mm

Completed on:
2024/03/08

Measurement results

Maximum H-field [RMS]:

MAGNITUDE: 1.54 A/m

x: 492.91 mA/m, y: 403.15 mA/m, z: 1.40 A/m

Maximum H-field location relative to DUT:

x: 11.00 mm, y: -3.67 mm, z: 8.50 mm

Maximum E-field [RMS]:

MAGNITUDE: 1.51 V/m

x: 286.95 mV/m, y: 249.67 mV/m, z: 1.46 V/m

Maximum E-field location relative to DUT:

x: 0.00 m, y: 7.33 mm, z: 1.00 mm

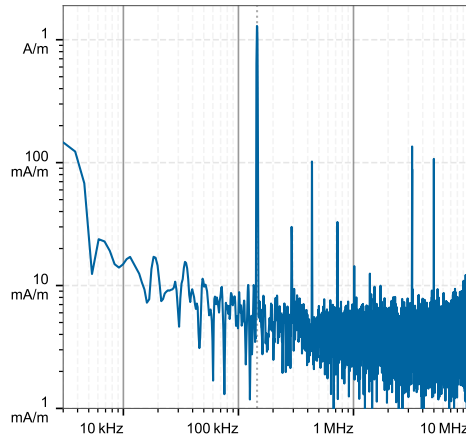
Distance to -20.0 dB boundary:

14.67 mm

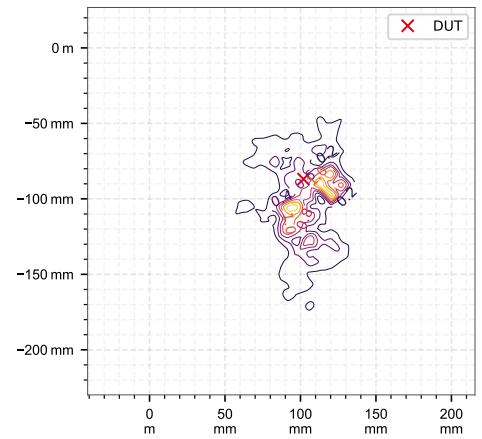
Offset relative to DUT:

x: 0.00 m, y: 0.00 m, z: 1.00 mm

H-field magnitude [RMS] at maximum location



H-field magnitude [RMS] at lowest plane



Incident fields, and induced quantities in the anatomical model

| Distance [mm] | Peak incident fields [RMS] | | Peak E _{ind} [V/m, RMS] | | | Peak J _{ind} [A/m ² , RMS] | psSAR [mW/kg] | | H-field extent -20 dB radius [mm] |
|---------------|----------------------------|------------------------|----------------------------------|--------|-----------|--|---------------|----------|-----------------------------------|
| | H _{inc} [A/m] | E _{inc} [V/m] | Cube avg. | Local | Line avg. | Surface avg. | 1g avg. | 10g avg. | |
| 0.0 | 3.02 | 1.51 | 0.0114 | 0.0118 | 0.0117 | 0.00702 | 0.0000473 | 0.000021 | 38.2 |

DASY8 Module WPT Measurement Report

Device under test

Info:
3_Left Side_0mm

Tool info

DASY software version:
DASY8 Module WPT 2.4.0.4346

Probe model, serial no. and configuration date:
MAGPy-8H3D+E3Dv2, WP000211, 2023/05/09

Software version:
2.0.49, backend: 2.2.3

Scan info

Center location:
x: 113.70 mm, y: -122.72 mm, z: 82.22 mm

Dimensions:
x: 169.0 mm, y: 257.0 mm, z: 36.7 mm

Resolution:
x: 7.33 mm, y: 7.33 mm, z: 7.33 mm

Completed on:
2024/03/08

Measurement results

Maximum H-field [RMS]:

MAGNITUDE: 1.46 A/m

x: 168.16 mA/m, y: 366.13 mA/m, z: 1.41 A/m

Maximum H-field location relative to DUT:

x: -11.00 mm, y: -25.67 mm, z: 8.50 mm

Maximum E-field [RMS]:

MAGNITUDE: 1.66 V/m

x: 48.48 mV/m, y: 93.79 mV/m, z: 1.65 V/m

Maximum E-field location relative to DUT:

x: -29.33 mm, y: 0.00 m, z: 1.00 mm

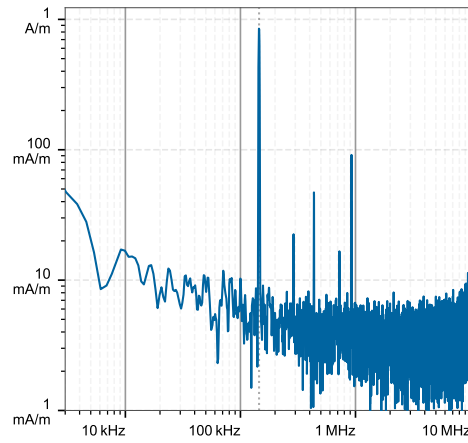
Distance to -20.0 dB boundary:

20.74 mm

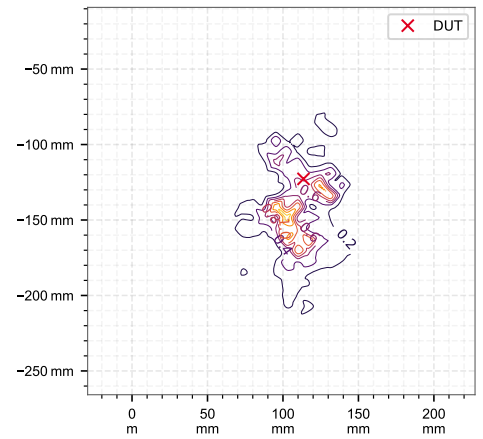
Offset relative to DUT:

x: 0.00 m, y: 0.00 m, z: 1.00 mm

H-field magnitude [RMS] at maximum location



H-field magnitude [RMS] at lowest plane



Incident fields, and induced quantities in the anatomical model

| Distance [mm] | Peak incident fields [RMS] | | Peak E_{ind} [V/m, RMS] | | | Peak J_{ind} [A/m ² , RMS] | psSAR [mW/kg] | | H-field extent |
|---------------|----------------------------|-----------------|---------------------------|--------|-----------|---|---------------|-----------|--------------------|
| | H_{inc} [A/m] | E_{inc} [V/m] | Cube avg. | Local | Line avg. | Surface avg. | 1g avg. | 10g avg. | -20 dB radius [mm] |
| 0.0 | 2.68 | 1.66 | 0.0121 | 0.0125 | 0.0125 | 0.00737 | 0.0000523 | 0.0000258 | 39.8 |