

System Check_Head_5800MHz

DUT: D5GHzV2 - SN1128

Communication System: CW; Frequency: 5800.000 MHz

Medium: HSL_5G_240227 Medium parameters used: $f = 5800.000$ MHz; $\sigma = 5.29$ S/m; $\epsilon_r = 36.2$

Ambient Temperature: 23.2°C; Liquid Temperature: 22.2°C

DASY8 Configuration:

- Probe: EX3DV4 - SN3925; ConvF(5.1, 5.1, 5.1); Calibrated: 2023-04-25
- Sensor-Surface: 1.4 mm
- Electronics: DAE4 Sn703; Calibrated: 2023-05-16
- Phantom: Twin-SAM V8.0 (30deg probe tilt); Serial: 2055; Section: Flat
- Measurement Software: 16.2.4.2524
- UID: CW, 0--

Pin=17.0dBm/Area Scan (40.0 mm x 80.0 mm): Measurement Grid: 10.0 mm x 10.0 mm

SAR (1g) = 3.46 W/kg; SAR (10g) = 1.00 W/kg;

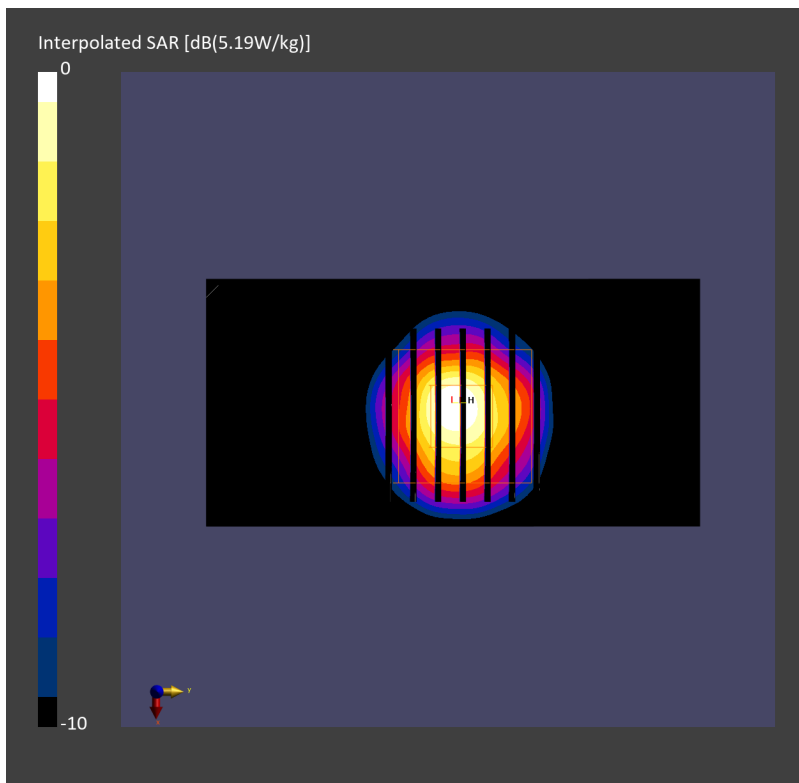
Pin=17.0dBm/Zoom Scan (22.0 mm x 22.0 mm x 22.0 mm): Measurement Grid: 4.0 mm x 4.0 mm x 1.4 mm

Power Drift = 0.04 dB

SAR (1g) = 3.71 W/kg; SAR (8g) = 1.23 W/kg; SAR (10g) = 1.06 W/kg

Smallest distance from peaks to all points 3 dB below = 7.6 mm

Ratio of SAR at M2 to SAR at M1 = 61.9 %



System Check_Head_5800MHz

DUT: D5GHzV2 - SN1128

Communication System: CW; Frequency: 5800.000 MHz

Medium: HSL_5G_240228 Medium parameters used: $f = 5800.000$ MHz; $\sigma = 5.33$ S/m; $\epsilon_r = 34.6$

Ambient Temperature: 23.3°C; Liquid Temperature: 22.3°C

DASY8 Configuration:

- Probe: EX3DV4 - SN3925; ConvF(5.1, 5.1, 5.1); Calibrated: 2023-04-25
- Sensor-Surface: 1.4 mm
- Electronics: DAE4 Sn703; Calibrated: 2023-05-16
- Phantom: Twin-SAM V8.0 (30deg probe tilt); Serial: 2055; Section: Flat
- Measurement Software: 16.2.4.2524
- UID: CW, 0--

Pin=17.0dBm/Area Scan (40.0 mm x 80.0 mm): Measurement Grid: 10.0 mm x 10.0 mm

SAR (1g) = 3.51 W/kg; SAR (10g) = 1.01 W/kg;

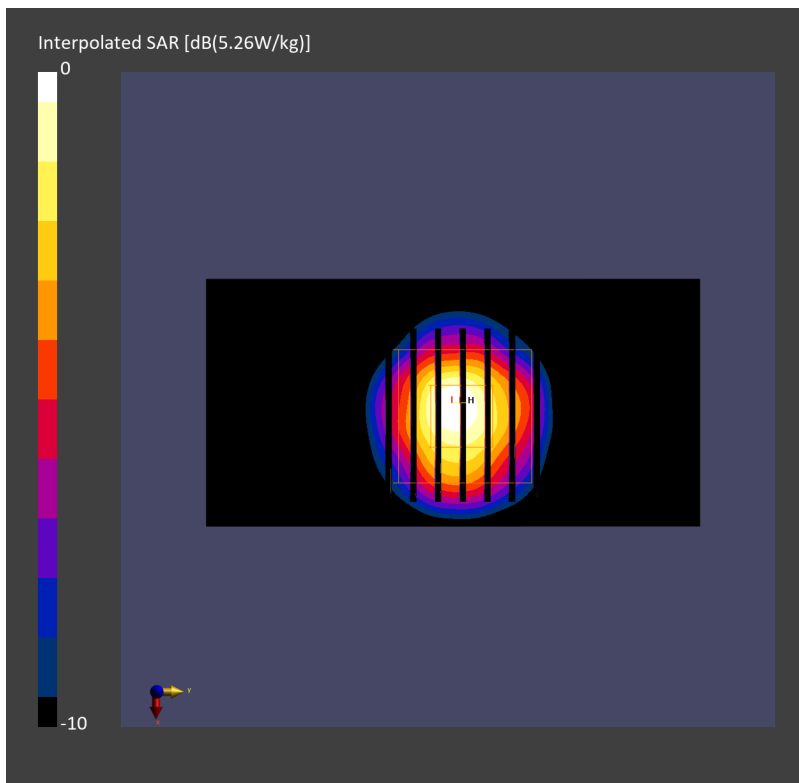
Pin=17.0dBm/Zoom Scan (22.0 mm x 22.0 mm x 22.0 mm): Measurement Grid: 4.0 mm x 4.0 mm x 1.4 mm

Power Drift = 0.01 dB

SAR (1g) = 3.74 W/kg; SAR (8g) = 1.24 W/kg; SAR (10g) = 1.07 W/kg

Smallest distance from peaks to all points 3 dB below = 7.6 mm

Ratio of SAR at M2 to SAR at M1 = 61.8 %



System Check_Head_5800MHz

DUT: D5GHzV2 - SN1128

Communication System: CW; Frequency: 5800.000 MHz

Medium: HSL_5G_240229 Medium parameters used: $f = 5800.000$ MHz; $\sigma = 5.32$ S/m; $\epsilon_r = 35.9$

Ambient Temperature: 23.4°C; Liquid Temperature: 22.4°C

DASY8 Configuration:

- Probe: EX3DV4 - SN3925; ConvF(5.1, 5.1, 5.1); Calibrated: 2023-04-25
- Sensor-Surface: 1.4 mm
- Electronics: DAE4 Sn703; Calibrated: 2023-05-16
- Phantom: Twin-SAM V8.0 (30deg probe tilt); Serial: 2055; Section: Flat
- Measurement Software: 16.2.4.2524
- UID: CW, 0--

Pin=17.0dBm/Area Scan (40.0 mm x 80.0 mm): Measurement Grid: 10.0 mm x 10.0 mm

SAR (1g) = 3.50 W/kg; SAR (10g) = 1.01 W/kg;

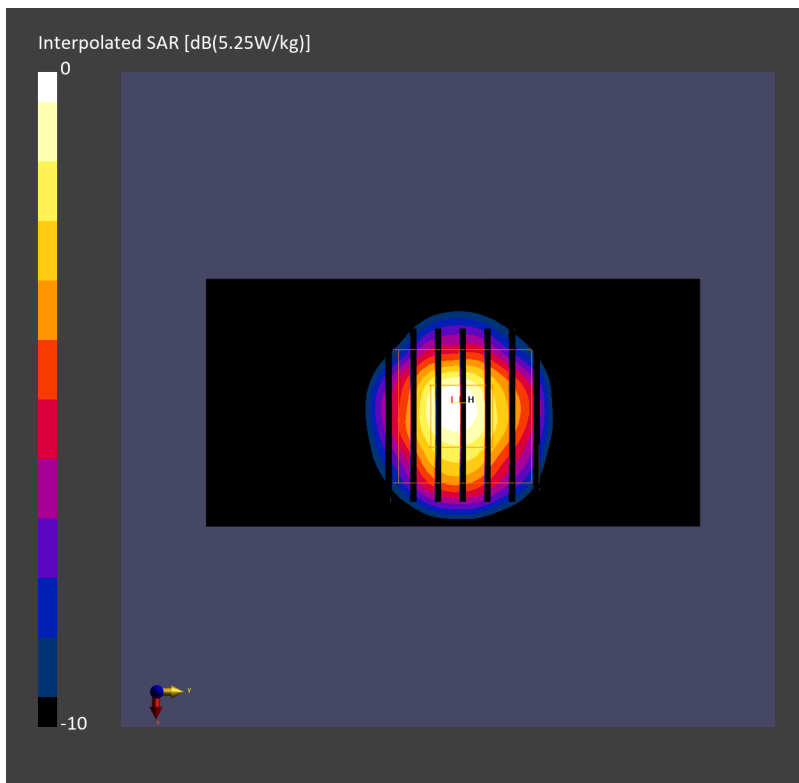
Pin=17.0dBm/Zoom Scan (22.0 mm x 22.0 mm x 22.0 mm): Measurement Grid: 4.0 mm x 4.0 mm x 1.4 mm

Power Drift = 0.01 dB

SAR (1g) = 3.73 W/kg; SAR (8g) = 1.24 W/kg; SAR (10g) = 1.07 W/kg

Smallest distance from peaks to all points 3 dB below = 6.9 mm

Ratio of SAR at M2 to SAR at M1 = 61.6 %



System Check_Head_5800MHz

DUT: D5GHzV2 - SN1128

Communication System: CW; Frequency: 5800.000 MHz

Medium: HSL_5G_240301 Medium parameters used: $f = 5800.000$ MHz; $\sigma = 5.29$ S/m; $\epsilon_r = 35.5$

Ambient Temperature: 23.3°C; Liquid Temperature: 22.3°C

DASY8 Configuration:

- Probe: EX3DV4 - SN3925; ConvF(5.1, 5.1, 5.1); Calibrated: 2023-04-25
- Sensor-Surface: 1.4 mm
- Electronics: DAE4 Sn703; Calibrated: 2023-05-16
- Phantom: Twin-SAM V8.0 (30deg probe tilt); Serial: 2055; Section: Flat
- Measurement Software: 16.2.4.2524
- UID: CW, 0--

Pin=17.0dBm/Area Scan (40.0 mm x 80.0 mm): Measurement Grid: 10.0 mm x 10.0 mm

SAR (1g) = 3.47 W/kg; SAR (10g) = 1.00 W/kg;

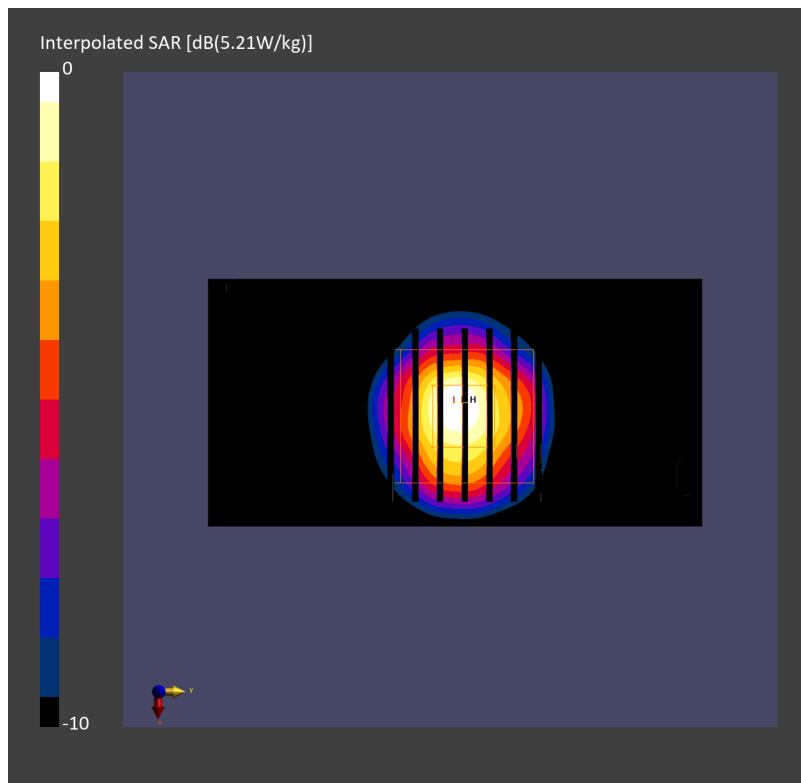
Pin=17.0dBm/Zoom Scan (22.0 mm x 22.0 mm x 22.0 mm): Measurement Grid: 4.0 mm x 4.0 mm x 1.4 mm

Power Drift = 0.01 dB

SAR (1g) = 3.70 W/kg; SAR (8g) = 1.23 W/kg; SAR (10g) = 1.06 W/kg

Smallest distance from peaks to all points 3 dB below = 7.6 mm

Ratio of SAR at M2 to SAR at M1 = 61.8 %



System Check_Head_6500MHz

DUT: D6.5GHzV2 - SN1003

Communication System: CW; Frequency: 6500.000 MHz

Medium: HSL_6G_240209 Medium parameters used: $f = 6500.000$ MHz; $\sigma = 6.15$ S/m; $\epsilon_r = 34.8$

Ambient Temperature: 23.4°C; Liquid Temperature: 22.4°C

DASY8 Configuration:

- Probe: EX3DV4 - SN3925; ConvF(5.35, 5.35, 5.35); Calibrated: 2023-04-25
- Sensor-Surface: 1.4 mm
- Electronics: DAE4 Sn703; Calibrated: 2023-05-16
- Phantom: Twin-SAM V8.0 (30deg probe tilt); Serial: 2055; Section: Flat
- Measurement Software: 16.2.4.2524
- UID: CW, 0--

Pin=20.0dBm/Area Scan (51.0 mm x 85.0 mm): Measurement Grid: 8.5 mm x 8.5 mm

SAR (1g) = 25.6 W/kg; SAR (10g) = 5.06 W/kg;

Pin=20.0dBm/Zoom Scan (22.0 mm x 22.0 mm x 22.0 mm): Measurement Grid: 3.4 mm x 3.4 mm x 1.4 mm

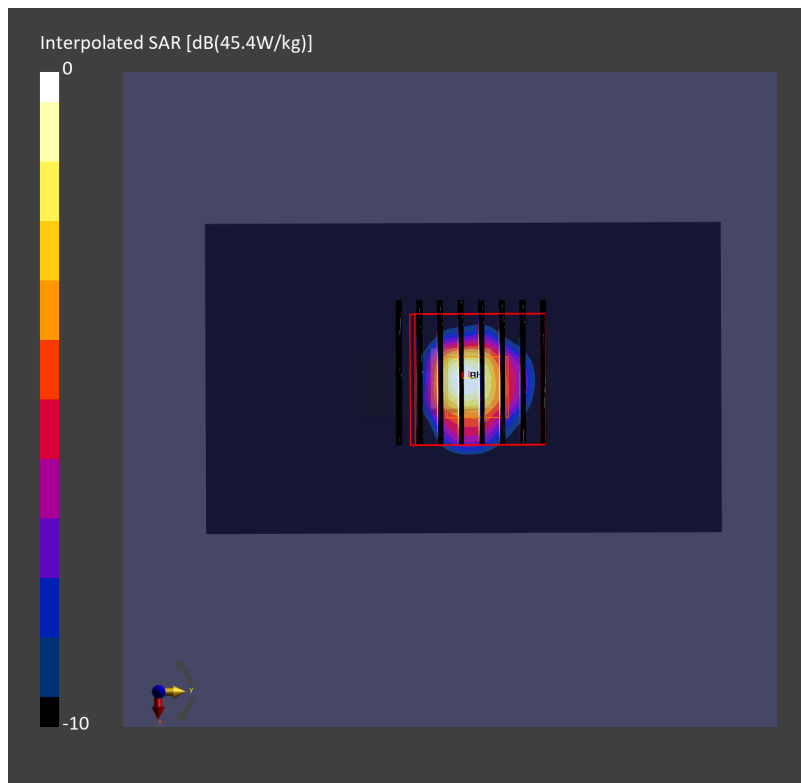
Power Drift = 0.01 dB

SAR (1g) = 29.8 W/kg; SAR (8g) = 6.76 W/kg; SAR (10g) = 5.52 W/kg

Smallest distance from peaks to all points 3 dB below = 4.6 mm

Ratio of SAR at M2 to SAR at M1 = 51.4 %

psAPD (1.0cm², sq) = 298 [W/m²]; psAPD (4.0cm², sq) = 135 [W/m²]



System Check_Head_6500MHz

DUT: D6.5GHzV2 - SN1003

Communication System: CW; Frequency: 6500.000 MHz

Medium: HSL_6G_240210 Medium parameters used: $f = 6500.000$ MHz; $\sigma = 6.23$ S/m; $\epsilon_r = 35.0$

Ambient Temperature: 23.5°C; Liquid Temperature: 22.5°C

DASY8 Configuration:

- Probe: EX3DV4 - SN3925; ConvF(5.35, 5.35, 5.35); Calibrated: 2023-04-25
- Sensor-Surface: 1.4 mm
- Electronics: DAE4 Sn703; Calibrated: 2023-05-16
- Phantom: Twin-SAM V8.0 (30deg probe tilt); Serial: 2055; Section: Flat
- Measurement Software: 16.2.4.2524
- UID: CW, 0--

Pin=20.0dBm/Area Scan (51.0 mm x 85.0 mm): Measurement Grid: 8.5 mm x 8.5 mm

SAR (1g) = 25.7 W/kg; SAR (10g) = 5.08 W/kg;

Pin=20.0dBm/Zoom Scan (22.0 mm x 22.0 mm x 22.0 mm): Measurement Grid: 3.4 mm x 3.4 mm x 1.4 mm

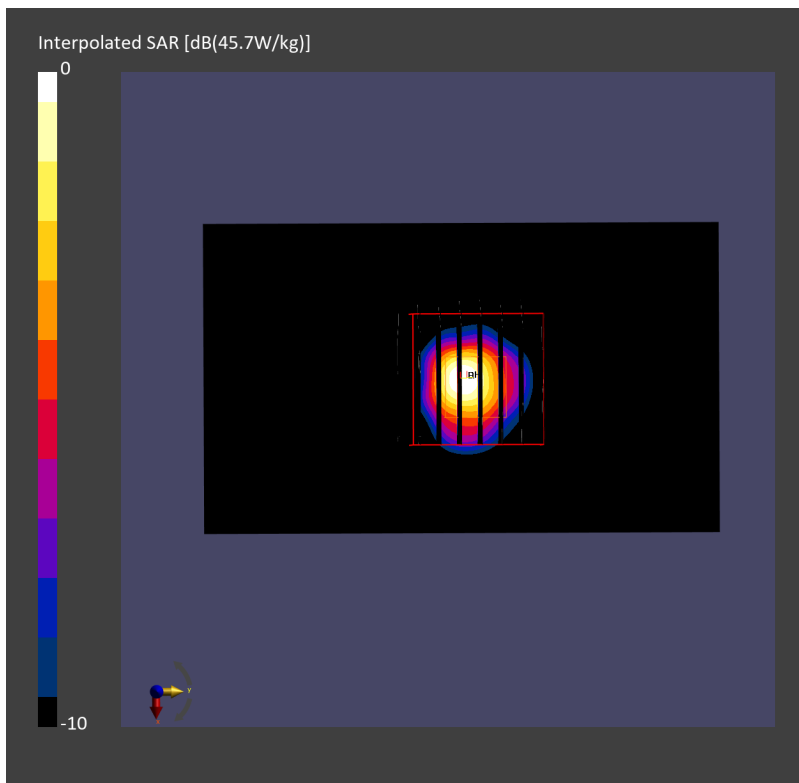
Power Drift = -0.06 dB

SAR (1g) = 30.0 W/kg; SAR (8g) = 6.79 W/kg; SAR (10g) = 5.55 W/kg

Smallest distance from peaks to all points 3 dB below = 4.6 mm

Ratio of SAR at M2 to SAR at M1 = 51.5 %

psAPD (1.0cm², sq) = 300 [W/m²]; psAPD (4.0cm², sq) = 136 [W/m²]



System Check_Head_6500MHz**DUT: D6.5GHzV2 - SN1003**

Communication System: CW; Frequency: 6500.000 MHz

Medium: HSL_6G_240212 Medium parameters used: $f = 6500.000$ MHz; $\sigma = 6.08$ S/m; $\epsilon_r = 34.5$

Ambient Temperature: 23.5°C; Liquid Temperature: 22.5°C

DASY8 Configuration:

- Probe: EX3DV4 - SN3925; ConvF(5.35, 5.35, 5.35); Calibrated: 2023-04-25
- Sensor-Surface: 1.4 mm
- Electronics: DAE4 Sn703; Calibrated: 2023-05-16
- Phantom: Twin-SAM V8.0 (30deg probe tilt); Serial: 2055; Section: Flat
- Measurement Software: 16.2.4.2524
- UID: CW, 0--

Pin=20.0dBm/Area Scan (51.0 mm x 85.0 mm): Measurement Grid: 8.5 mm x 8.5 mm

SAR (1g) = 24.6 W/kg; SAR (10g) = 4.86 W/kg;

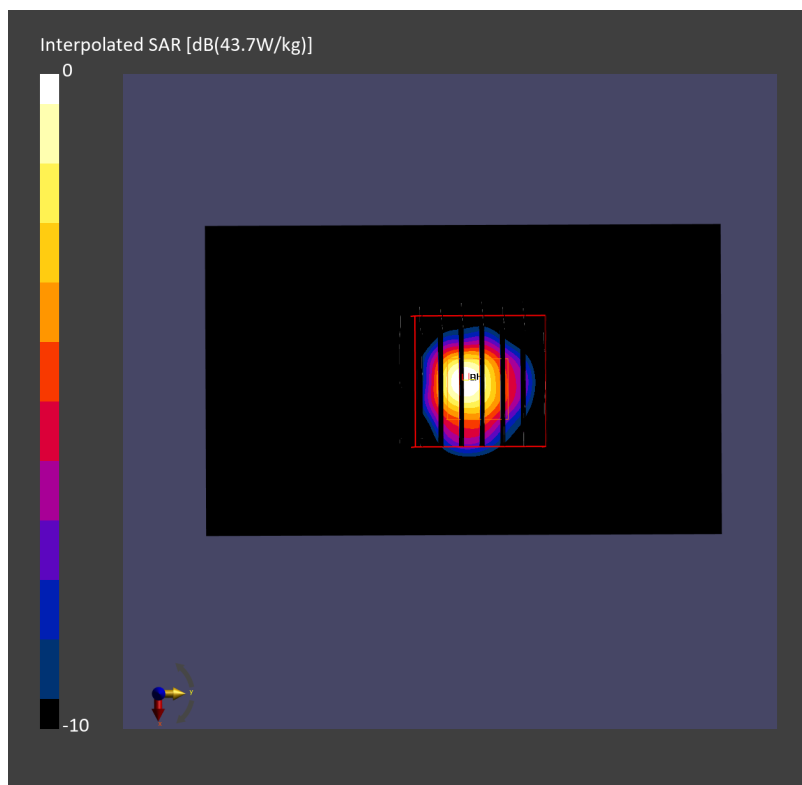
Pin=20.0dBm/Zoom Scan (22.0 mm x 22.0 mm x 22.0 mm): Measurement Grid: 3.4 mm x 3.4 mm x 1.4 mm

Power Drift = 0.06 dB

SAR (1g) = 28.9 W/kg; SAR (8g) = 6.55 W/kg; SAR (10g) = 5.35 W/kg

Smallest distance from peaks to all points 3 dB below = 4.6 mm

Ratio of SAR at M2 to SAR at M1 = 51.7 %

psAPD (1.0cm², sq) = 289 [W/m²]; psAPD (4.0cm², sq) = 131 [W/m²]

System Check_Head_6500MHz

DUT: D6.5GHzV2 - SN1083

Communication System: CW; Frequency: 6500.000 MHz

Medium: HSL_6G_240412 Medium parameters used: $f = 6500.000$ MHz; $\sigma = 6.03$ S/m; $\epsilon_r = 34.4$

Ambient Temperature: 23.5°C; Liquid Temperature: 22.5°C

DASY8 Configuration:

- Probe: EX3DV4 - SN7351; ConvF(5.45, 5.45, 5.45); Calibrated: 2024-03-20
- Sensor-Surface: 1.4 mm
- Electronics: DAE4 Sn854; Calibrated: 2023-08-17
- Phantom: Twin-SAM V8.0 (30deg probe tilt); Serial: 2055; Section: Flat
- Measurement Software: 16.2.4.2524
- UID: CW, 0--

Pin=20.0dBm/Area Scan (51.0 mm x 85.0 mm): Measurement Grid: 8.5 mm x 8.5 mm

SAR (1g) = 27.9 W/kg; SAR (10g) = 5.75 W/kg;

Pin=20.0dBm/Zoom Scan (22.0 mm x 22.0 mm x 22.0 mm): Measurement Grid: 3.4 mm x 3.4 mm x 1.4 mm

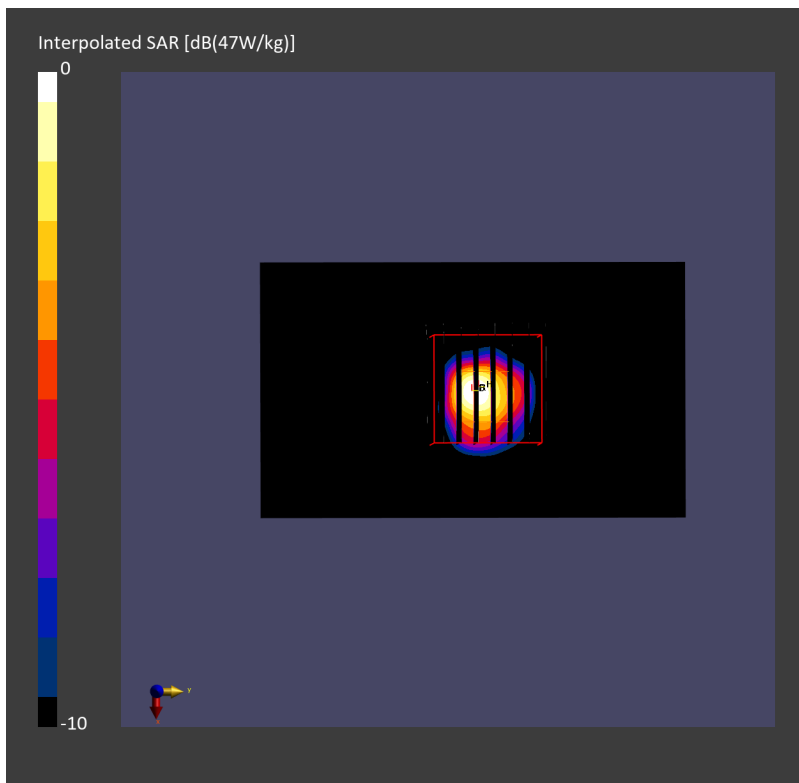
Power Drift = 0.09 dB

SAR (1g) = 29.8 W/kg; SAR (8g) = 6.72 W/kg; SAR (10g) = 5.49 W/kg

Smallest distance from peaks to all points 3 dB below = 4.9 mm

Ratio of SAR at M2 to SAR at M1 = 52.0 %

psAPD (1.0cm², sq) = 298 [W/m²]; psAPD (4.0cm², sq) = 134 [W/m²]



System Check_Head_2450MHz

DUT: D2450V2 - SN736

Communication System: CW; Frequency: 2450.000 MHz

Medium: HSL_2450_240302 Medium parameters used: $f=2450.000$ MHz; $\sigma=1.83$ S/m; $\epsilon_r=39.0$

Ambient Temperature: 23.2°C; Liquid Temperature: 22.2°C

DASY8 Configuration:

- Probe: EX3DV4 - SN3925; ConvF(7.92, 7.92, 7.92); Calibrated: 2023-04-25
- Sensor-Surface: 1.4 mm
- Electronics: DAE4 Sn703; Calibrated: 2023-05-16
- Phantom: Twin-SAM V8.0 (30deg probe tilt); Serial: 2055; Section: Flat
- Measurement Software: 16.2.4.2524
- UID: CW, 0--

Pin=17.0dBm/Area Scan (40.0 mm x 80.0 mm): Measurement Grid: 10.0 mm x 10.0 mm

SAR (1g) = 2.60 W/kg; SAR (10g) = 1.21 W/kg;

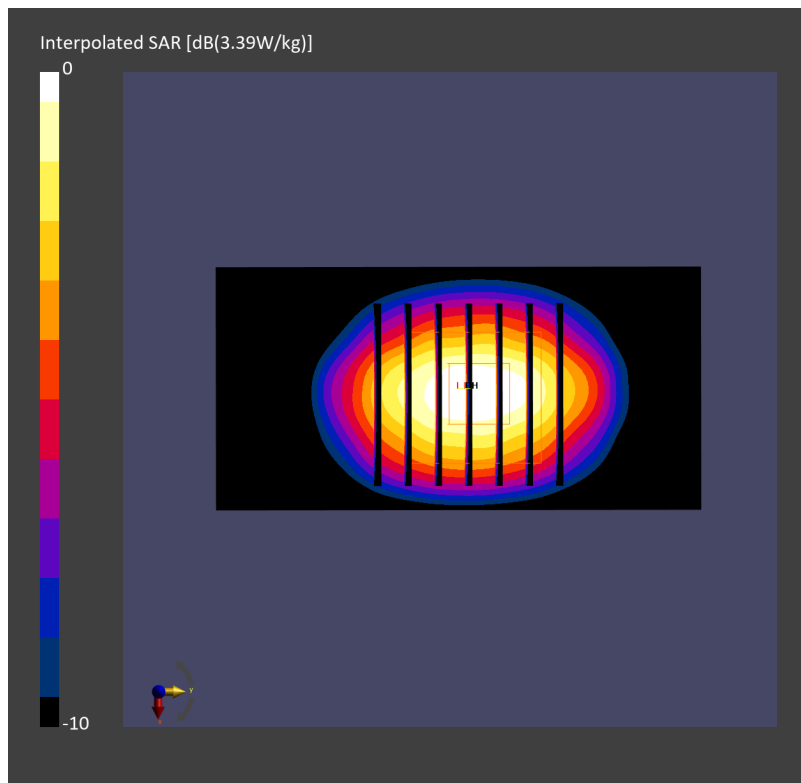
Pin=17.0dBm/Zoom Scan (30.0 mm x 30.0 mm x 30.0 mm): Measurement Grid: 5.0 mm x 5.0 mm x 1.5 mm

Power Drift = 0.03 dB

SAR (1g) = 2.60 W/kg; SAR (8g) = 1.36 W/kg; SAR (10g) = 1.23 W/kg

Smallest distance from peaks to all points 3 dB below = 9.0 mm

Ratio of SAR at M2 to SAR at M1 = 80.2 %



System Check_Head_2450MHz

DUT: D2450V2 - SN736

Communication System: CW; Frequency: 2450.000 MHz

Medium: HSL_2450_240303 Medium parameters used: $f=2450.000$ MHz; $\sigma=1.82$ S/m; $\epsilon_r=38.9$

Ambient Temperature: 23.3°C; Liquid Temperature: 22.3°C

DASY8 Configuration:

- Probe: EX3DV4 - SN3925; ConvF(7.92, 7.92, 7.92); Calibrated: 2023-04-25
- Sensor-Surface: 1.4 mm
- Electronics: DAE4 Sn703; Calibrated: 2023-05-16
- Phantom: Twin-SAM V8.0 (30deg probe tilt); Serial: 2055; Section: Flat
- Measurement Software: 16.2.4.2524
- UID: CW, 0--

Pin=17.0dBm/Area Scan (40.0 mm x 80.0 mm): Measurement Grid: 10.0 mm x 10.0 mm

SAR (1g) = 2.61 W/kg; SAR (10g) = 1.21 W/kg;

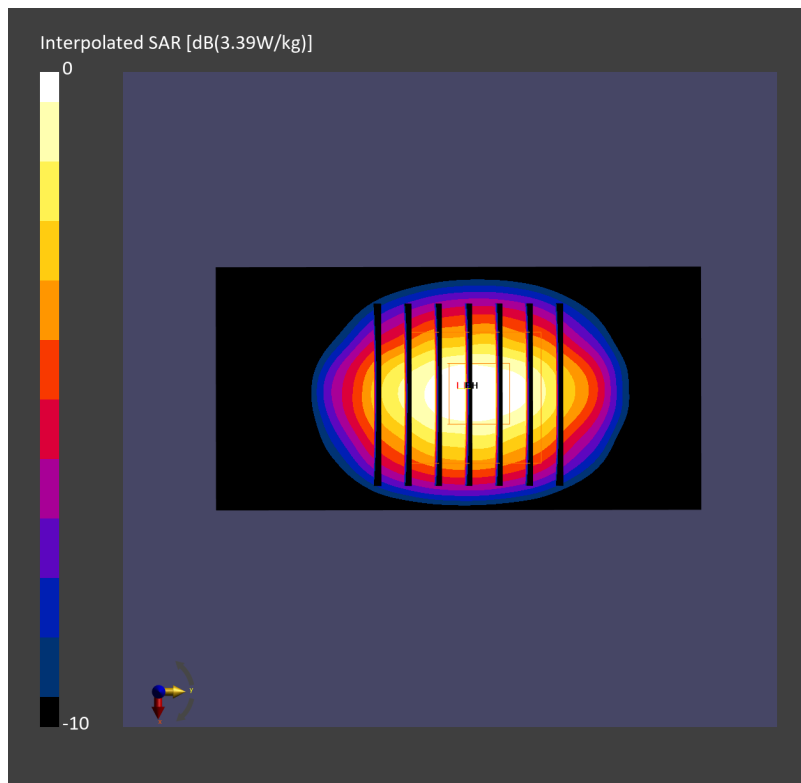
Pin=17.0dBm/Zoom Scan (30.0 mm x 30.0 mm x 30.0 mm): Measurement Grid: 5.0 mm x 5.0 mm x 1.5 mm

Power Drift = 0.02 dB

SAR (1g) = 2.60 W/kg; SAR (8g) = 1.36 W/kg; SAR (10g) = 1.23 W/kg

Smallest distance from peaks to all points 3 dB below = 9.0 mm

Ratio of SAR at M2 to SAR at M1 = 79.8 %



System Check_Head_2450MHz

DUT: D2450V2 - SN736

Communication System: CW; Frequency: 2450.000 MHz

Medium: HSL_2450_240304 Medium parameters used: $f=2450.000$ MHz; $\sigma=1.82$ S/m; $\epsilon_r=38.4$

Ambient Temperature: 23.4°C; Liquid Temperature: 22.4°C

DASY8 Configuration:

- Probe: EX3DV4 - SN3925; ConvF(7.92, 7.92, 7.92); Calibrated: 2023-04-25
- Sensor-Surface: 1.4 mm
- Electronics: DAE4 Sn703; Calibrated: 2023-05-16
- Phantom: Twin-SAM V8.0 (30deg probe tilt); Serial: 2055; Section: Flat
- Measurement Software: 16.2.4.2524
- UID: CW, 0--

Pin=17.0dBm/Area Scan (40.0 mm x 80.0 mm): Measurement Grid: 10.0 mm x 10.0 mm

SAR (1g) = 2.59 W/kg; SAR (10g) = 1.20 W/kg;

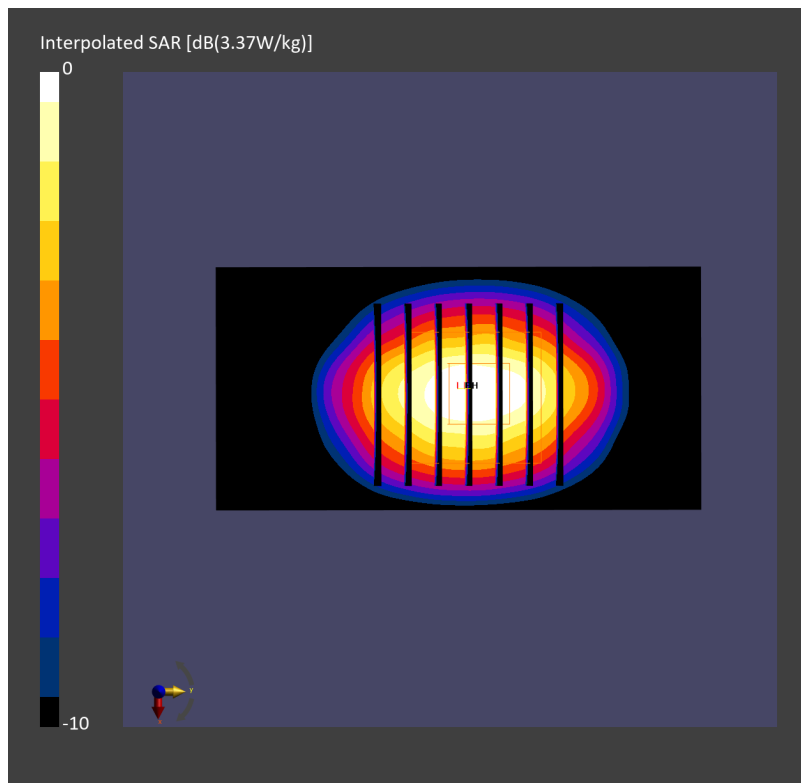
Pin=17.0dBm/Zoom Scan (30.0 mm x 30.0 mm x 30.0 mm): Measurement Grid: 5.0 mm x 5.0 mm x 1.5 mm

Power Drift = 0.01 dB

SAR (1g) = 2.58 W/kg; SAR (8g) = 1.35 W/kg; SAR (10g) = 1.22 W/kg

Smallest distance from peaks to all points 3 dB below = 9.0 mm

Ratio of SAR at M2 to SAR at M1 = 80.5 %



System Check_Head_2450MHz

DUT: D2450V2 - SN736

Communication System: CW; Frequency: 2450.000 MHz

Medium: HSL_2450_240305 Medium parameters used: $f=2450.000$ MHz; $\sigma=1.81$ S/m; $\epsilon_r=38.8$

Ambient Temperature: 23.5°C; Liquid Temperature: 22.5°C

DASY8 Configuration:

- Probe: EX3DV4 - SN3925; ConvF(7.92, 7.92, 7.92); Calibrated: 2023-04-25
- Sensor-Surface: 1.4 mm
- Electronics: DAE4 Sn703; Calibrated: 2023-05-16
- Phantom: Twin-SAM V8.0 (30deg probe tilt); Serial: 2055; Section: Flat
- Measurement Software: 16.2.4.2524
- UID: CW, 0--

Pin=17.0dBm/Area Scan (40.0 mm x 80.0 mm): Measurement Grid: 10.0 mm x 10.0 mm

SAR (1g) = 2.57 W/kg; SAR (10g) = 1.19 W/kg;

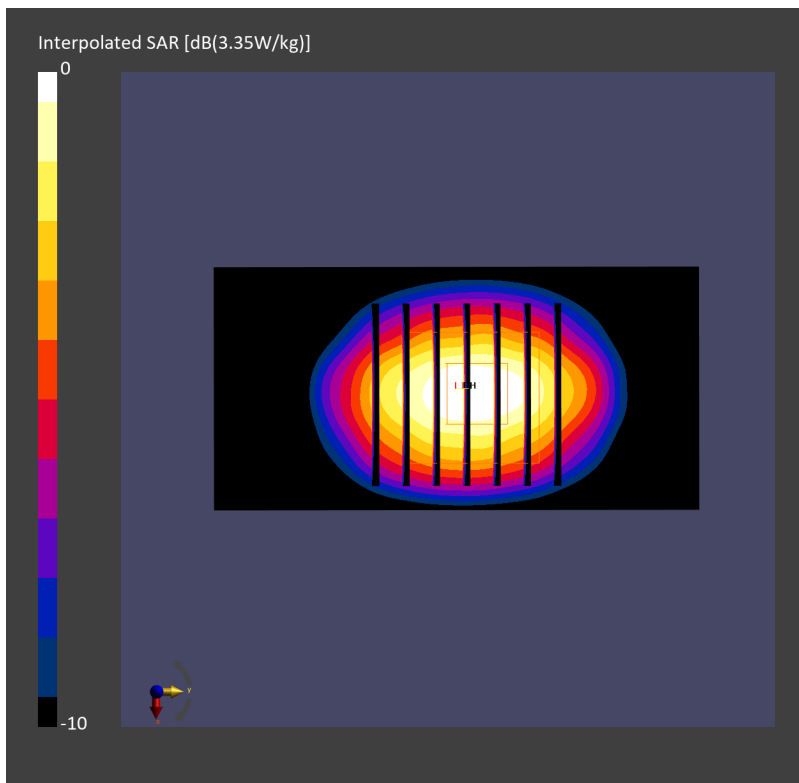
Pin=17.0dBm/Zoom Scan (30.0 mm x 30.0 mm x 30.0 mm): Measurement Grid: 5.0 mm x 5.0 mm x 1.5 mm

Power Drift = 0.01 dB

SAR (1g) = 2.57 W/kg; SAR (8g) = 1.34 W/kg; SAR (10g) = 1.21 W/kg

Smallest distance from peaks to all points 3 dB below = 9.0 mm

Ratio of SAR at M2 to SAR at M1 = 80.4 %



System Check_Head_2450MHz

DUT: D2450V2 - SN736

Communication System: CW; Frequency: 2450.000 MHz

Medium: HSL_2450_240306 Medium parameters used: $f=2450.000$ MHz; $\sigma=1.80$ S/m; $\epsilon_r=38.3$

Ambient Temperature: 23.6°C; Liquid Temperature: 22.6°C

DASY8 Configuration:

- Probe: EX3DV4 - SN3925; ConvF(7.92, 7.92, 7.92); Calibrated: 2023-04-25
- Sensor-Surface: 1.4 mm
- Electronics: DAE4 Sn703; Calibrated: 2023-05-16
- Phantom: Twin-SAM V8.0 (30deg probe tilt); Serial: 2055; Section: Flat
- Measurement Software: 16.2.4.2524
- UID: CW, 0--

Pin=17.0dBm/Area Scan (40.0 mm x 80.0 mm): Measurement Grid: 10.0 mm x 10.0 mm

SAR (1g) = 2.60 W/kg; SAR (10g) = 1.20 W/kg;

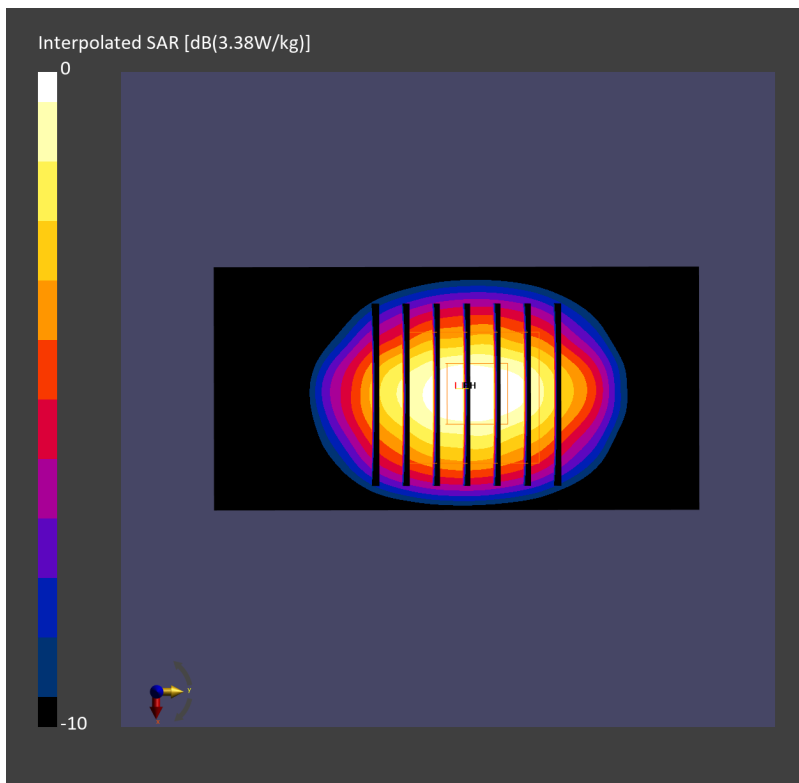
Pin=17.0dBm/Zoom Scan (30.0 mm x 30.0 mm x 30.0 mm): Measurement Grid: 5.0 mm x 5.0 mm x 1.5 mm

Power Drift = 0.01 dB

SAR (1g) = 2.58 W/kg; SAR (8g) = 1.35 W/kg; SAR (10g) = 1.22 W/kg

Smallest distance from peaks to all points 3 dB below = 9.0 mm

Ratio of SAR at M2 to SAR at M1 = 80.3 %



System Check_Head_2450MHz

DUT: D2450V2 - SN736

Communication System: CW; Frequency: 2450.000 MHz

Medium: HSL_2450_240307 Medium parameters used: $f=2450.000$ MHz; $\sigma=1.82$ S/m; $\epsilon_r=38.5$

Ambient Temperature: 23.2°C; Liquid Temperature: 22.2°C

DASY8 Configuration:

- Probe: EX3DV4 - SN3925; ConvF(7.92, 7.92, 7.92); Calibrated: 2023-04-25
- Sensor-Surface: 1.4 mm
- Electronics: DAE4 Sn703; Calibrated: 2023-05-16
- Phantom: Twin-SAM V8.0 (30deg probe tilt); Serial: 2055; Section: Flat
- Measurement Software: 16.2.4.2524
- UID: CW, 0--

Pin=17.0dBm/Area Scan (40.0 mm x 80.0 mm): Measurement Grid: 10.0 mm x 10.0 mm

SAR (1g) = 2.59 W/kg; SAR (10g) = 1.20 W/kg;

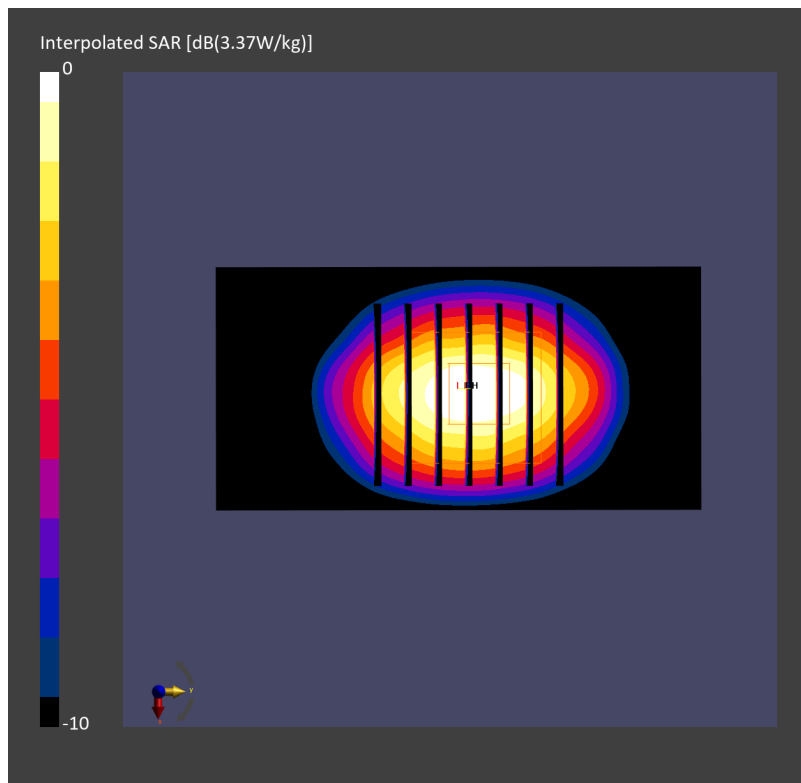
Pin=17.0dBm/Zoom Scan (30.0 mm x 30.0 mm x 30.0 mm): Measurement Grid: 5.0 mm x 5.0 mm x 1.5 mm

Power Drift = 0.00 dB

SAR (1g) = 2.58 W/kg; SAR (8g) = 1.35 W/kg; SAR (10g) = 1.22 W/kg

Smallest distance from peaks to all points 3 dB below = 9.0 mm

Ratio of SAR at M2 to SAR at M1 = 80.2 %



System Check_Head_2450MHz

DUT: D2450V2 - SN736

Communication System: CW; Frequency: 2450.000 MHz

Medium: HSL_2450_240308 Medium parameters used: $f=2450.000$ MHz; $\sigma=1.84$ S/m; $\epsilon_r=39.0$

Ambient Temperature: 23.3°C; Liquid Temperature: 22.3°C

DASY8 Configuration:

- Probe: EX3DV4 - SN3925; ConvF(7.92, 7.92, 7.92); Calibrated: 2023-04-25
- Sensor-Surface: 1.4 mm
- Electronics: DAE4 Sn703; Calibrated: 2023-05-16
- Phantom: Twin-SAM V8.0 (30deg probe tilt); Serial: 2055; Section: Flat
- Measurement Software: 16.2.4.2524
- UID: CW, 0--

Pin=17.0dBm/Area Scan (40.0 mm x 80.0 mm): Measurement Grid: 10.0 mm x 10.0 mm

SAR (1g) = 2.61 W/kg; SAR (10g) = 1.21 W/kg;

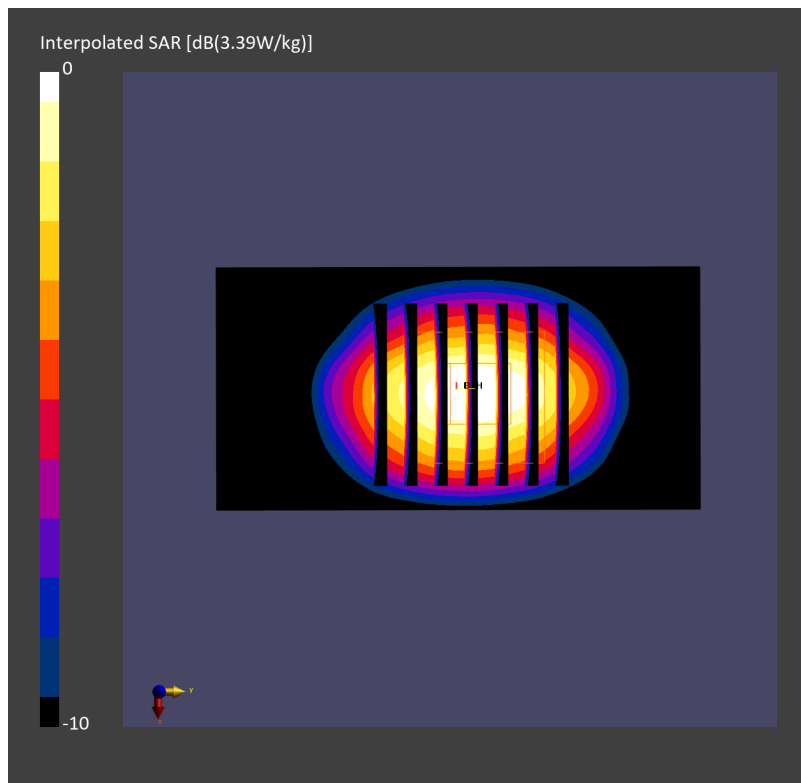
Pin=17.0dBm/Zoom Scan (30.0 mm x 30.0 mm x 30.0 mm): Measurement Grid: 5.0 mm x 5.0 mm x 1.5 mm

Power Drift = 0.02 dB

SAR (1g) = 2.60 W/kg; SAR (8g) = 1.36 W/kg; SAR (10g) = 1.23 W/kg

Smallest distance from peaks to all points 3 dB below = 9.0 mm

Ratio of SAR at M2 to SAR at M1 = 80.1 %



System Check_Head_2450MHz

DUT: D2450V2 - SN736

Communication System: CW; Frequency: 2450.000 MHz

Medium: HSL_2450_240309 Medium parameters used: $f=2450.000$ MHz; $\sigma=1.82$ S/m; $\epsilon_r=38.7$

Ambient Temperature: 23.4°C; Liquid Temperature: 22.4°C

DASY8 Configuration:

- Probe: EX3DV4 - SN3925; ConvF(7.92, 7.92, 7.92); Calibrated: 2023-04-25
- Sensor-Surface: 1.4 mm
- Electronics: DAE4 Sn703; Calibrated: 2023-05-16
- Phantom: Twin-SAM V8.0 (30deg probe tilt); Serial: 2055; Section: Flat
- Measurement Software: 16.2.4.2524
- UID: CW, 0--

Pin=17.0dBm/Area Scan (40.0 mm x 80.0 mm): Measurement Grid: 10.0 mm x 10.0 mm

SAR (1g) = 2.61 W/kg; SAR (10g) = 1.21 W/kg;

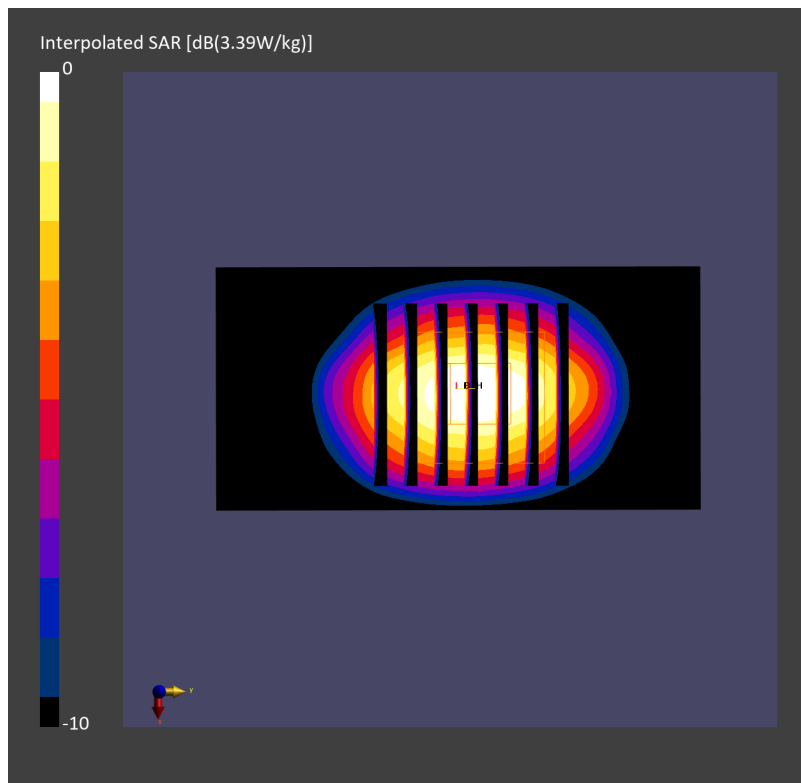
Pin=17.0dBm/Zoom Scan (30.0 mm x 30.0 mm x 30.0 mm): Measurement Grid: 5.0 mm x 5.0 mm x 1.5 mm

Power Drift = 0.01 dB

SAR (1g) = 2.60 W/kg; SAR (8g) = 1.36 W/kg; SAR (10g) = 1.23 W/kg

Smallest distance from peaks to all points 3 dB below = 9.0 mm

Ratio of SAR at M2 to SAR at M1 = 80.2 %



System Check_Head_5250MHz

DUT: D5GHzV2 - SN1006

Communication System: CW; Frequency: 5250.000 MHz

Medium: HSL_5G_240310 Medium parameters used: $f = 5250.000$ MHz; $\sigma = 4.71$ S/m; $\epsilon_r = 35.5$

Ambient Temperature: 23.1°C; Liquid Temperature: 22.1°C

DASY8 Configuration:

- Probe: EX3DV4 - SN3925; ConvF(5.64, 5.64, 5.64); Calibrated: 2023-04-25
- Sensor-Surface: 1.4 mm
- Electronics: DAE4 Sn703; Calibrated: 2023-05-16
- Phantom: Twin-SAM V8.0 (30deg probe tilt); Serial: 2055; Section: Flat
- Measurement Software: 16.2.4.2524
- UID: CW, 0--

Pin=17.0dBm/Area Scan (40.0 mm x 80.0 mm): Measurement Grid: 10.0 mm x 10.0 mm

SAR (1g) = 3.45 W/kg; SAR (10g) = 1.00 W/kg;

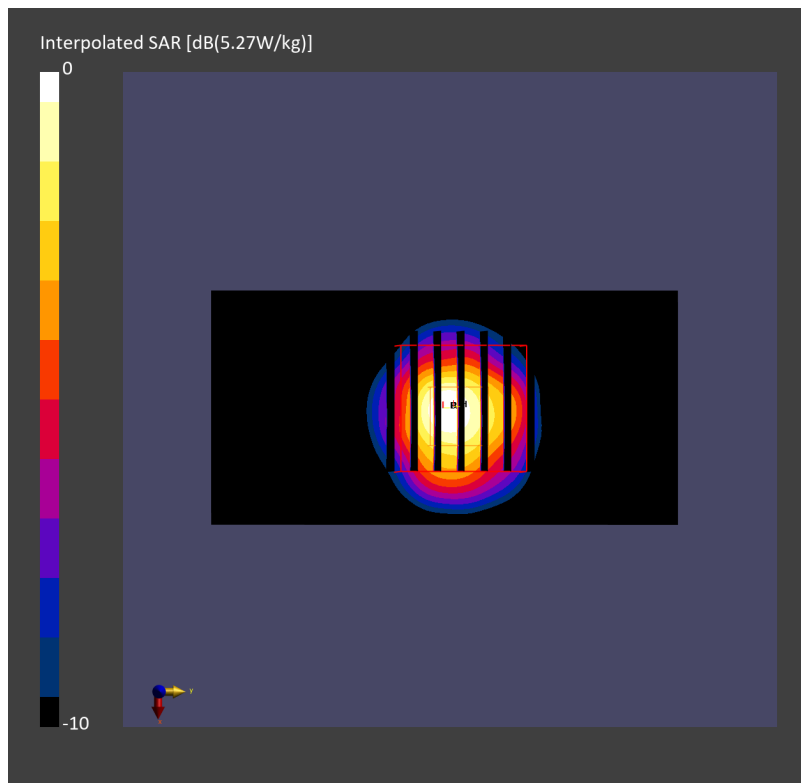
Pin=17.0dBm/Zoom Scan (22.0 mm x 22.0 mm x 22.0 mm): Measurement Grid: 4.0 mm x 4.0 mm x 1.4 mm

Power Drift = 0.01 dB

SAR (1g) = 3.66 W/kg; SAR (8g) = 1.22 W/kg; SAR (10g) = 1.05 W/kg

Smallest distance from peaks to all points 3 dB below = 7.2 mm

Ratio of SAR at M2 to SAR at M1 = 66.2 %



System Check_Head_5250MHz

DUT: D5GHzV2 - SN1006

Communication System: CW; Frequency: 5250.000 MHz

Medium: HSL_5G_240311 Medium parameters used: $f = 5250.000$ MHz; $\sigma = 4.68$ S/m; $\epsilon_r = 35.6$

Ambient Temperature: 23.4°C; Liquid Temperature: 22.4°C

DASY8 Configuration:

- Probe: EX3DV4 - SN3925; ConvF(5.64, 5.64, 5.64); Calibrated: 2023-04-25
- Sensor-Surface: 1.4 mm
- Electronics: DAE4 Sn703; Calibrated: 2023-05-16
- Phantom: Twin-SAM V8.0 (30deg probe tilt); Serial: 2055; Section: Flat
- Measurement Software: 16.2.4.2524
- UID: CW, 0--

Pin=17.0dBm/Area Scan (40.0 mm x 80.0 mm): Measurement Grid: 10.0 mm x 10.0 mm

SAR (1g) = 3.44 W/kg; SAR (10g) = 0.997 W/kg;

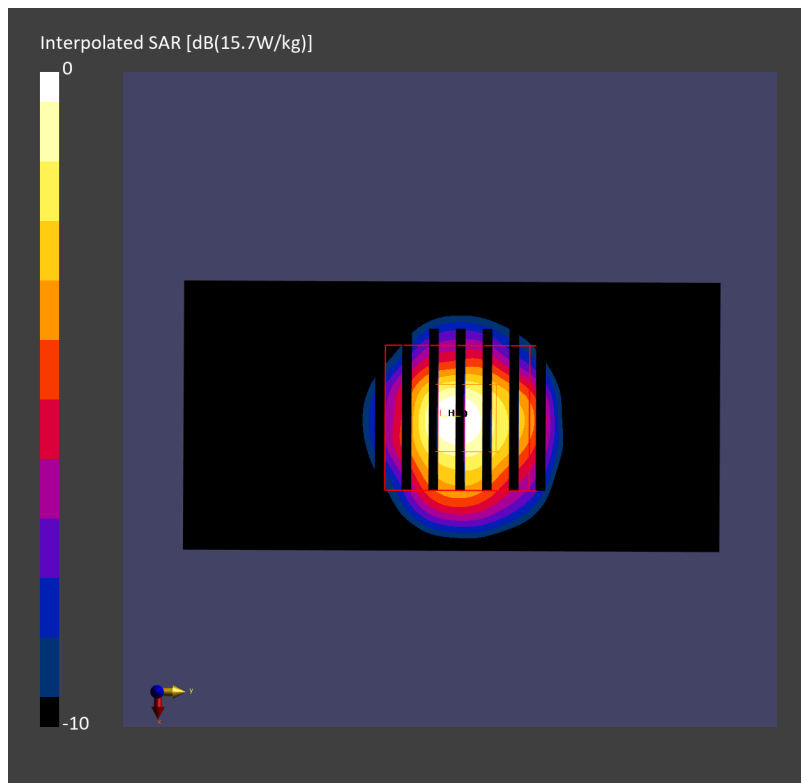
Pin=17.0dBm/Zoom Scan (22.0 mm x 22.0 mm x 22.0 mm): Measurement Grid: 4.0 mm x 4.0 mm x 1.4 mm

Power Drift = 0.02 dB

SAR (1g) = 4.09 W/kg; SAR (8g) = 1.38 W/kg; SAR (10g) = 1.18 W/kg

Smallest distance from peaks to all points 3 dB below = 7.3 mm

Ratio of SAR at M2 to SAR at M1 = 63.4 %



System Check_Head_5250MHz

DUT: D5GHzV2 - SN1006

Communication System: CW; Frequency: 5250.000 MHz

Medium: HSL_5G_240312 Medium parameters used: $f = 5250.000$ MHz; $\sigma = 4.76$ S/m; $\epsilon_r = 36.6$

Ambient Temperature: 23.7°C; Liquid Temperature: 22.7°C

DASY8 Configuration:

- Probe: EX3DV4 - SN3925; ConvF(5.64, 5.64, 5.64); Calibrated: 2023-04-25
- Sensor-Surface: 1.4 mm
- Electronics: DAE4 Sn703; Calibrated: 2023-05-16
- Phantom: Twin-SAM V8.0 (30deg probe tilt); Serial: 2055; Section: Flat
- Measurement Software: 16.2.4.2524
- UID: CW, 0--

Pin=17.0dBm/Area Scan (40.0 mm x 80.0 mm): Measurement Grid: 10.0 mm x 10.0 mm

SAR (1g) = 3.54 W/kg; SAR (10g) = 1.02 W/kg;

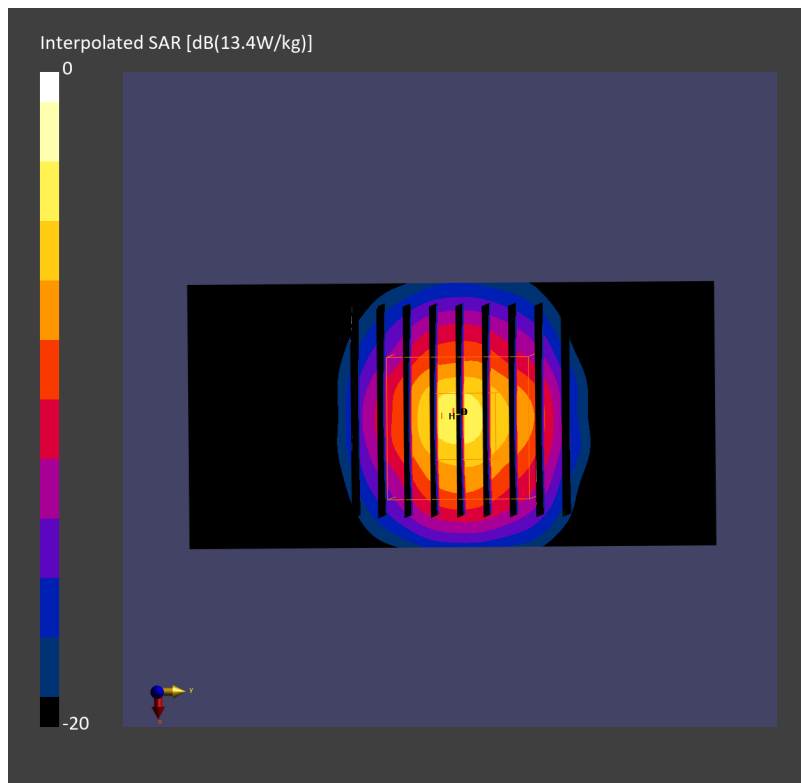
Pin=17.0dBm/Zoom Scan (22.0 mm x 22.0 mm x 22.0 mm): Measurement Grid: 4.0 mm x 4.0 mm x 1.4 mm

Power Drift = 0.01 dB

SAR (1g) = 3.69 W/kg; SAR (8g) = 1.24 W/kg; SAR (10g) = 1.07 W/kg

Smallest distance from peaks to all points 3 dB below = 7.4 mm

Ratio of SAR at M2 to SAR at M1 = 66.2 %



System Check_Head_5250MHz

DUT: D5GHzV2 - SN1006

Communication System: CW; Frequency: 5250.000 MHz

Medium: HSL_5G_240313 Medium parameters used: $f = 5250.000$ MHz; $\sigma = 4.74$ S/m; $\epsilon_r = 36.3$

Ambient Temperature: 23.5°C; Liquid Temperature: 22.5°C

DASY8 Configuration:

- Probe: EX3DV4 - SN3925; ConvF(5.64, 5.64, 5.64); Calibrated: 2023-04-25
- Sensor-Surface: 1.4 mm
- Electronics: DAE4 Sn703; Calibrated: 2023-05-16
- Phantom: Twin-SAM V8.0 (30deg probe tilt); Serial: 2055; Section: Flat
- Measurement Software: 16.2.4.2524
- UID: CW, 0--

Pin=17.0dBm/Area Scan (40.0 mm x 80.0 mm): Measurement Grid: 10.0 mm x 10.0 mm

SAR (1g) = 3.53 W/kg; SAR (10g) = 1.01 W/kg;

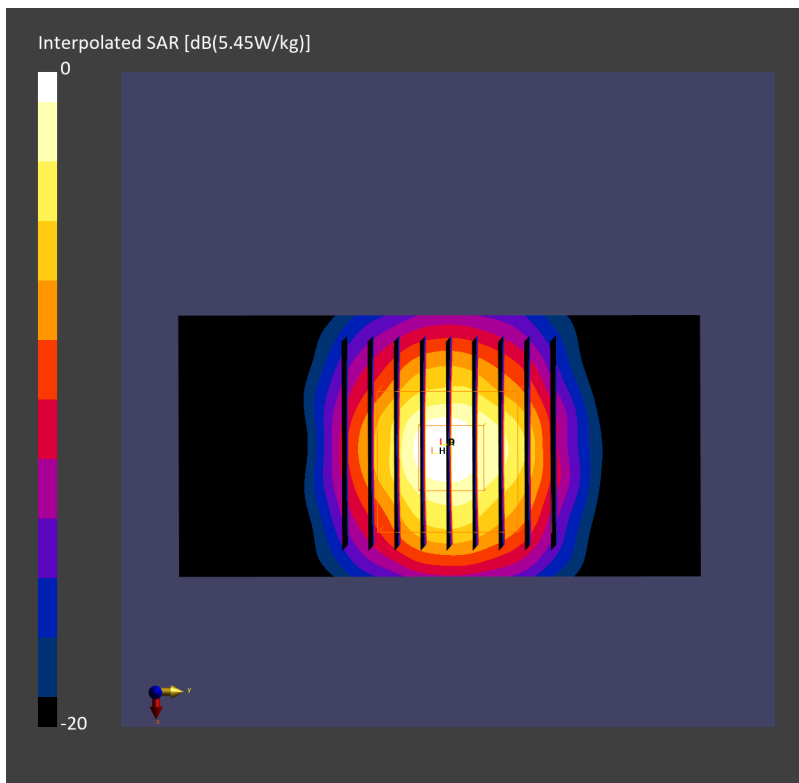
Pin=17.0dBm/Zoom Scan (22.0 mm x 22.0 mm x 22.0 mm): Measurement Grid: 4.0 mm x 4.0 mm x 1.4 mm

Power Drift = 0.02 dB

SAR (1g) = 3.67 W/kg; SAR (8g) = 1.24 W/kg; SAR (10g) = 1.06 W/kg

Smallest distance from peaks to all points 3 dB below = 7.4 mm

Ratio of SAR at M2 to SAR at M1 = 66.4 %



System Check_Head_5600MHz

DUT: D5GHzV2 - SN1006

Communication System: CW; Frequency: 5600.000 MHz

Medium: HSL_5G_240314 Medium parameters used: $f = 5600.000$ MHz; $\sigma = 5.09$ S/m; $\epsilon_r = 35.8$

Ambient Temperature: 23.4°C; Liquid Temperature: 22.4°C

DASY8 Configuration:

- Probe: EX3DV4 - SN3925; ConvF(4.95, 4.95, 4.95); Calibrated: 2023-04-25
- Sensor-Surface: 1.4 mm
- Electronics: DAE4 Sn703; Calibrated: 2023-05-16
- Phantom: Twin-SAM V8.0 (30deg probe tilt); Serial: 2055; Section: Flat
- Measurement Software: 16.2.4.2524
- UID: CW, 0--

Pin=17.0dBm/Area Scan (40.0 mm x 80.0 mm): Measurement Grid: 10.0 mm x 10.0 mm

SAR (1g) = 3.83 W/kg; SAR (10g) = 1.12 W/kg;

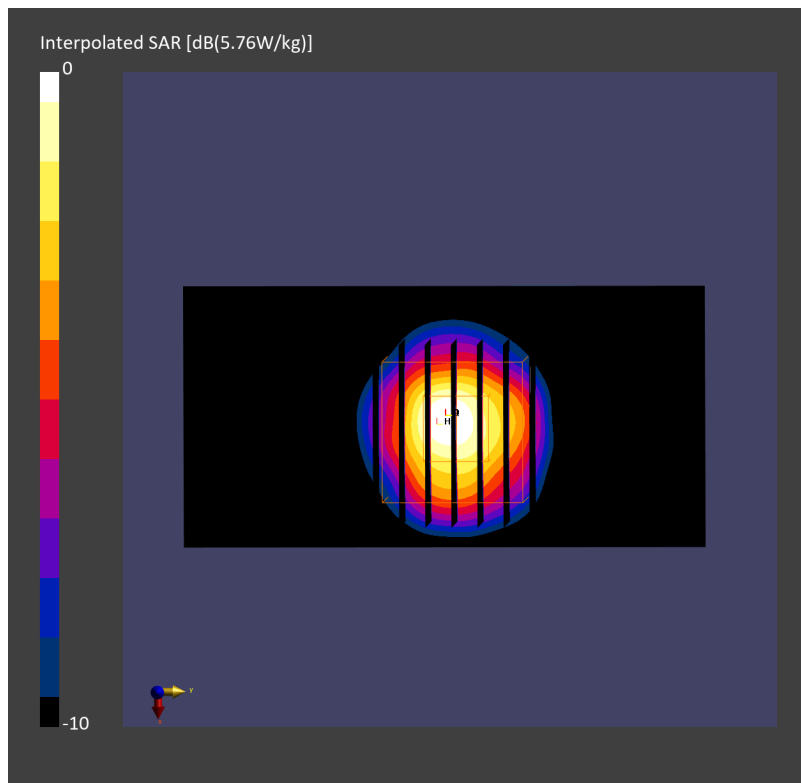
Pin=17.0dBm/Zoom Scan (22.0 mm x 22.0 mm x 22.0 mm): Measurement Grid: 4.0 mm x 4.0 mm x 1.4 mm

Power Drift = 0.02 dB

SAR (1g) = 4.04 W/kg; SAR (8g) = 1.35 W/kg; SAR (10g) = 1.16 W/kg

Smallest distance from peaks to all points 3 dB below = 7.3 mm

Ratio of SAR at M2 to SAR at M1 = 63.4 %



System Check_Head_5600MHz

DUT: D5GHzV2 - SN1006

Communication System: CW; Frequency: 5600.000 MHz

Medium: HSL_5G_240315 Medium parameters used: $f = 5600.000$ MHz; $\sigma = 5.15$ S/m; $\epsilon_r = 36.0$

Ambient Temperature: 23.5°C; Liquid Temperature: 22.5°C

DASY8 Configuration:

- Probe: EX3DV4 - SN3925; ConvF(4.95, 4.95, 4.95); Calibrated: 2023-04-25
- Sensor-Surface: 1.4 mm
- Electronics: DAE4 Sn703; Calibrated: 2023-05-16
- Phantom: Twin-SAM V8.0 (30deg probe tilt); Serial: 2055; Section: Flat
- Measurement Software: 16.2.4.2524
- UID: CW, 0--

Pin=17.0dBm/Area Scan (40.0 mm x 80.0 mm): Measurement Grid: 10.0 mm x 10.0 mm

SAR (1g) = 3.91 W/kg; SAR (10g) = 1.13 W/kg;

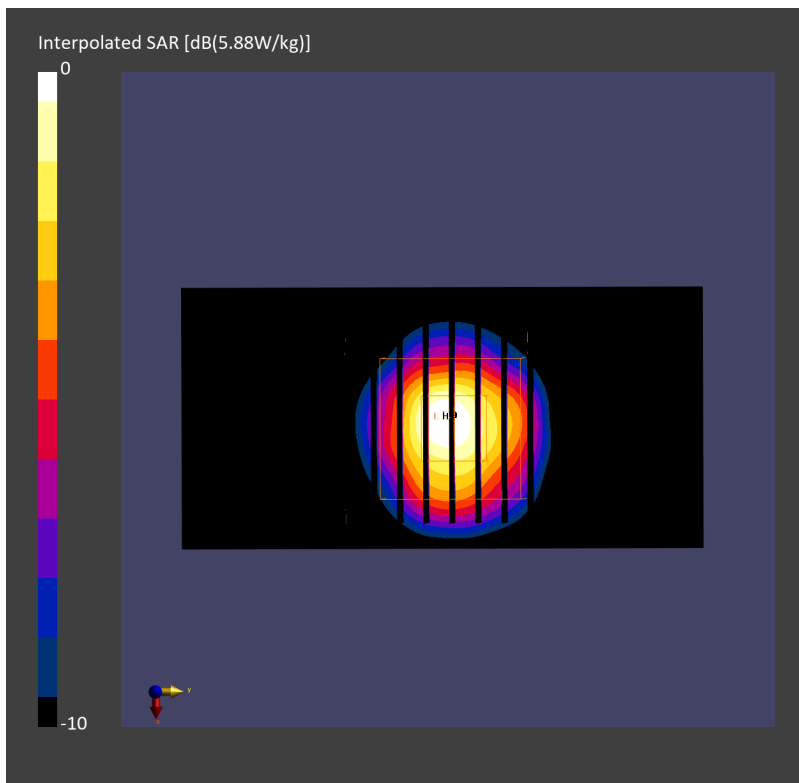
Pin=17.0dBm/Zoom Scan (22.0 mm x 22.0 mm x 22.0 mm): Measurement Grid: 4.0 mm x 4.0 mm x 1.4 mm

Power Drift = 0.01 dB

SAR (1g) = 4.10 W/kg; SAR (8g) = 1.37 W/kg; SAR (10g) = 1.18 W/kg

Smallest distance from peaks to all points 3 dB below = 7.3 mm

Ratio of SAR at M2 to SAR at M1 = 63.8 %



System Check_Head_5800MHz

DUT: D5GHzV2 - SN1128

Communication System: CW; Frequency: 5800.000 MHz

Medium: HSL_5G_240316 Medium parameters used: $f = 5800.000$ MHz; $\sigma = 5.36$ S/m; $\epsilon_r = 34.8$

Ambient Temperature: 23.6°C; Liquid Temperature: 22.6°C

DASY8 Configuration:

- Probe: EX3DV4 - SN3925; ConvF(5.1, 5.1, 5.1); Calibrated: 2023-04-25
- Sensor-Surface: 1.4 mm
- Electronics: DAE4 Sn703; Calibrated: 2023-05-16
- Phantom: Twin-SAM V8.0 (30deg probe tilt); Serial: 2055; Section: Flat
- Measurement Software: 16.2.4.2524
- UID: CW, 0--

Pin=17.0dBm/Area Scan (40.0 mm x 80.0 mm): Measurement Grid: 10.0 mm x 10.0 mm

SAR (1g) = 3.51 W/kg; SAR (10g) = 1.02 W/kg;

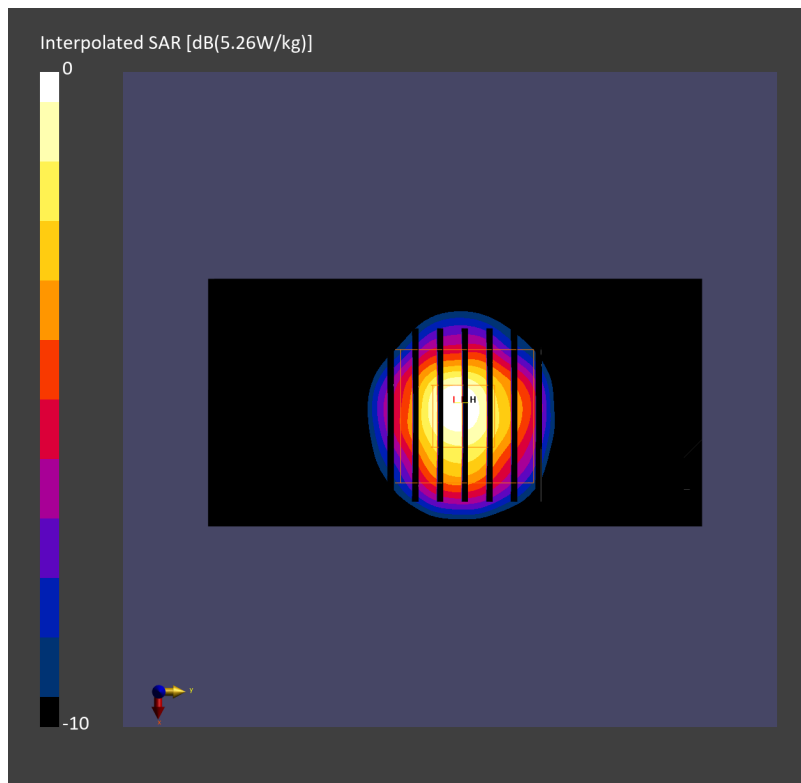
Pin=17.0dBm/Zoom Scan (22.0 mm x 22.0 mm x 22.0 mm): Measurement Grid: 4.0 mm x 4.0 mm x 1.4 mm

Power Drift = 0.05 dB

SAR (1g) = 3.75 W/kg; SAR (8g) = 1.25 W/kg; SAR (10g) = 1.07 W/kg

Smallest distance from peaks to all points 3 dB below = 7.9 mm

Ratio of SAR at M2 to SAR at M1 = 61.9 %



System Check_Head_5800MHz

DUT: D5GHzV2 - SN1128

Communication System: CW; Frequency: 5800.000 MHz

Medium: HSL_5G_240317 Medium parameters used: $f = 5800.000$ MHz; $\sigma = 5.45$ S/m; $\epsilon_r = 35.2$

Ambient Temperature: 23.2°C; Liquid Temperature: 22.2°C

DASY8 Configuration:

- Probe: EX3DV4 - SN3925; ConvF(5.1, 5.1, 5.1); Calibrated: 2023-04-25
- Sensor-Surface: 1.4 mm
- Electronics: DAE4 Sn703; Calibrated: 2023-05-16
- Phantom: Twin-SAM V8.0 (30deg probe tilt); Serial: 2055; Section: Flat
- Measurement Software: 16.2.4.2524
- UID: CW, 0--

Pin=17.0dBm/Area Scan (40.0 mm x 80.0 mm): Measurement Grid: 10.0 mm x 10.0 mm

SAR (1g) = 3.58 W/kg; SAR (10g) = 1.04 W/kg;

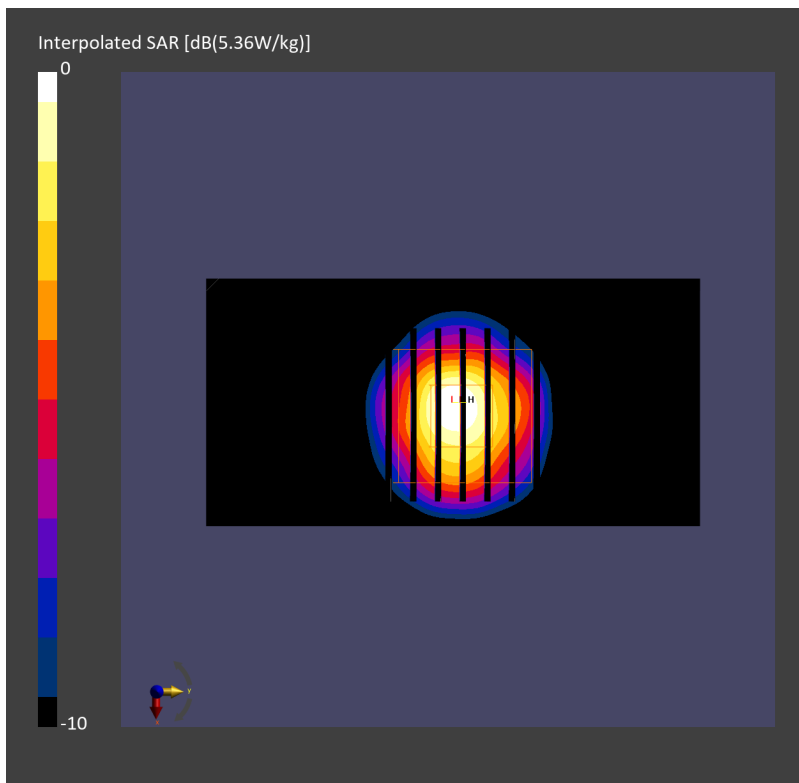
Pin=17.0dBm/Zoom Scan (22.0 mm x 22.0 mm x 22.0 mm): Measurement Grid: 4.0 mm x 4.0 mm x 1.4 mm

Power Drift = 0.01 dB

SAR (1g) = 3.83 W/kg; SAR (8g) = 1.28 W/kg; SAR (10g) = 1.10 W/kg

Smallest distance from peaks to all points 3 dB below = 7.6 mm

Ratio of SAR at M2 to SAR at M1 = 61.5 %



System Check_Head_5800MHz

DUT: D5GHzV2 - SN1128

Communication System: CW; Frequency: 5800.000 MHz

Medium: HSL_5G_240318 Medium parameters used: $f = 5800.000$ MHz; $\sigma = 5.52$ S/m; $\epsilon_r = 35.2$

Ambient Temperature: 23.3°C; Liquid Temperature: 22.3°C

DASY8 Configuration:

- Probe: EX3DV4 - SN3925; ConvF(5.1, 5.1, 5.1); Calibrated: 2023-04-25
- Sensor-Surface: 1.4 mm
- Electronics: DAE4 Sn703; Calibrated: 2023-05-16
- Phantom: Twin-SAM V8.0 (30deg probe tilt); Serial: 2055; Section: Flat
- Measurement Software: 16.2.4.2524
- UID: CW, 0--

Pin=17.0dBm/Area Scan (40.0 mm x 80.0 mm): Measurement Grid: 10.0 mm x 10.0 mm

SAR (1g) = 3.63 W/kg; SAR (10g) = 1.05 W/kg;

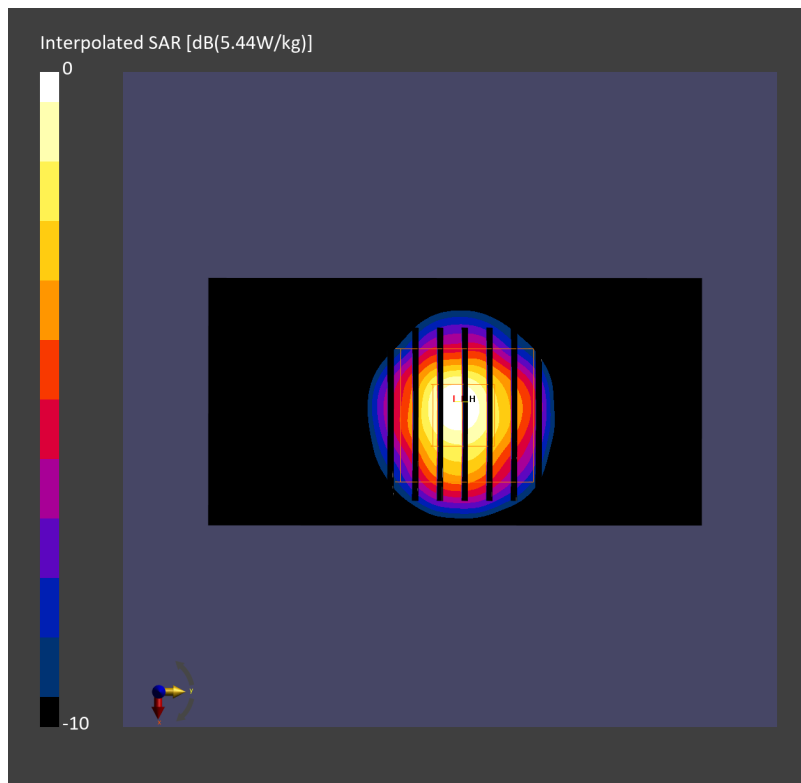
Pin=17.0dBm/Zoom Scan (22.0 mm x 22.0 mm x 22.0 mm): Measurement Grid: 4.0 mm x 4.0 mm x 1.4 mm

Power Drift = 0.03 dB

SAR (1g) = 3.86 W/kg; SAR (8g) = 1.28 W/kg; SAR (10g) = 1.10 W/kg

Smallest distance from peaks to all points 3 dB below = 7.6 mm

Ratio of SAR at M2 to SAR at M1 = 61.6 %



System Check_Head_5800MHz

DUT: D5GHzV2 - SN1128

Communication System: CW; Frequency: 5800.000 MHz

Medium: HSL_5G_240319 Medium parameters used: $f = 5800.000$ MHz; $\sigma = 5.44$ S/m; $\epsilon_r = 34.9$

Ambient Temperature: 23.4°C; Liquid Temperature: 22.4°C

DASY8 Configuration:

- Probe: EX3DV4 - SN3925; ConvF(5.1, 5.1, 5.1); Calibrated: 2023-04-25
- Sensor-Surface: 1.4 mm
- Electronics: DAE4 Sn703; Calibrated: 2023-05-16
- Phantom: Twin-SAM V8.0 (30deg probe tilt); Serial: 2055; Section: Flat
- Measurement Software: 16.2.4.2524
- UID: CW, 0--

Pin=17.0dBm/Area Scan (40.0 mm x 80.0 mm): Measurement Grid: 10.0 mm x 10.0 mm

SAR (1g) = 3.57 W/kg; SAR (10g) = 1.04 W/kg;

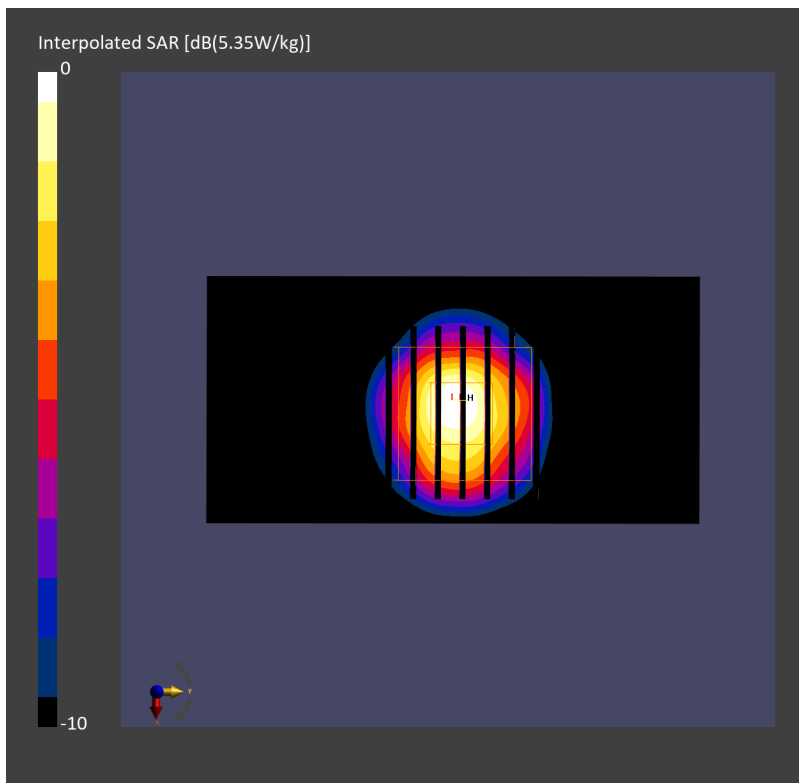
Pin=17.0dBm/Zoom Scan (22.0 mm x 22.0 mm x 22.0 mm): Measurement Grid: 4.0 mm x 4.0 mm x 1.4 mm

Power Drift = 0.03 dB

SAR (1g) = 3.82 W/kg; SAR (8g) = 1.27 W/kg; SAR (10g) = 1.09 W/kg

Smallest distance from peaks to all points 3 dB below = 7.2 mm

Ratio of SAR at M2 to SAR at M1 = 61.4 %



System Check_Head_6500MHz

DUT: D6.5GHzV2 - SN1003

Communication System: CW; Frequency: 6500.000 MHz

Medium: HSL_6G_240211 Medium parameters used: $f = 6500.000$ MHz; $\sigma = 6.11$ S/m; $\epsilon_r = 34.7$

Ambient Temperature: 23.4°C; Liquid Temperature: 22.4°C

DASY8 Configuration:

- Probe: EX3DV4 - SN3925; ConvF(5.35, 5.35, 5.35); Calibrated: 2023-04-25
- Sensor-Surface: 1.4 mm
- Electronics: DAE4 Sn703; Calibrated: 2023-05-16
- Phantom: Twin-SAM V8.0 (30deg probe tilt); Serial: 2055; Section: Flat
- Measurement Software: 16.2.4.2524
- UID: CW, 0--

Pin=20.0dBm/Area Scan (51.0 mm x 85.0 mm): Measurement Grid: 8.5 mm x 8.5 mm

SAR (1g) = 24.8 W/kg; SAR (10g) = 4.90 W/kg;

Pin=20.0dBm/Zoom Scan (22.0 mm x 22.0 mm x 22.0 mm): Measurement Grid: 3.4 mm x 3.4 mm x 1.4 mm

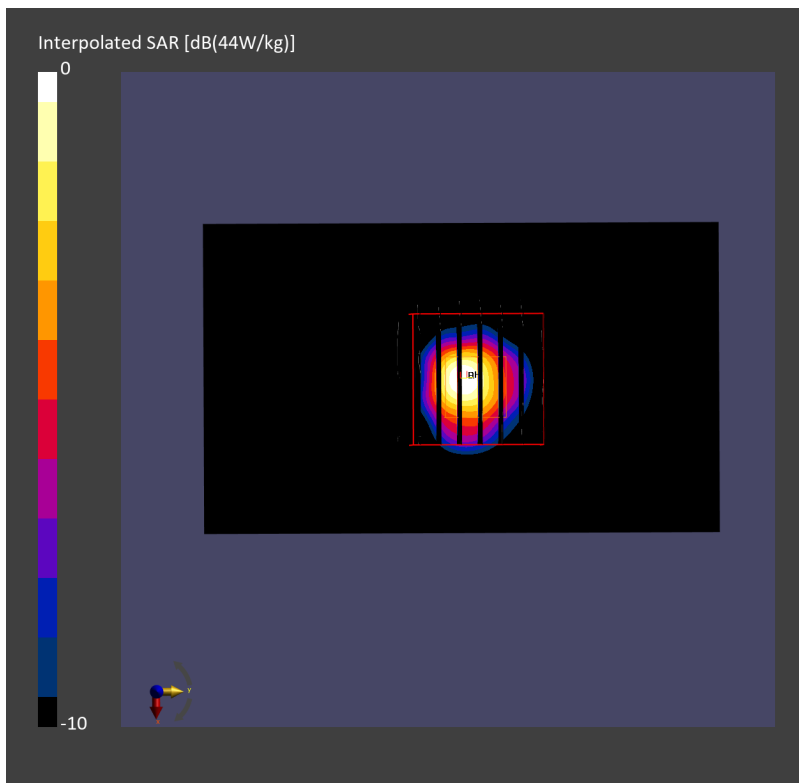
Power Drift = 0.07 dB

SAR (1g) = 29.0 W/kg; SAR (8g) = 6.58 W/kg; SAR (10g) = 5.37 W/kg

Smallest distance from peaks to all points 3 dB below = 4.6 mm

Ratio of SAR at M2 to SAR at M1 = 51.5 %

psAPD (1.0cm², sq) = 290 [W/m²]; psAPD (4.0cm², sq) = 132 [W/m²]



System Check_Head_6500MHz

DUT: D6.5GHzV2 - SN1003

Communication System: CW; Frequency: 6500.000 MHz

Medium: HSL_6G_240212 Medium parameters used: $f = 6500.000$ MHz; $\sigma = 6.08$ S/m; $\epsilon_r = 34.5$

Ambient Temperature: 23.5°C; Liquid Temperature: 22.5°C

DASY8 Configuration:

- Probe: EX3DV4 - SN3925; ConvF(5.35, 5.35, 5.35); Calibrated: 2023-04-25
- Sensor-Surface: 1.4 mm
- Electronics: DAE4 Sn703; Calibrated: 2023-05-16
- Phantom: Twin-SAM V8.0 (30deg probe tilt); Serial: 2055; Section: Flat
- Measurement Software: 16.2.4.2524
- UID: CW, 0--

Pin=20.0dBm/Area Scan (51.0 mm x 85.0 mm): Measurement Grid: 8.5 mm x 8.5 mm

SAR (1g) = 24.6 W/kg; SAR (10g) = 4.86 W/kg;

Pin=20.0dBm/Zoom Scan (22.0 mm x 22.0 mm x 22.0 mm): Measurement Grid: 3.4 mm x 3.4 mm x 1.4 mm

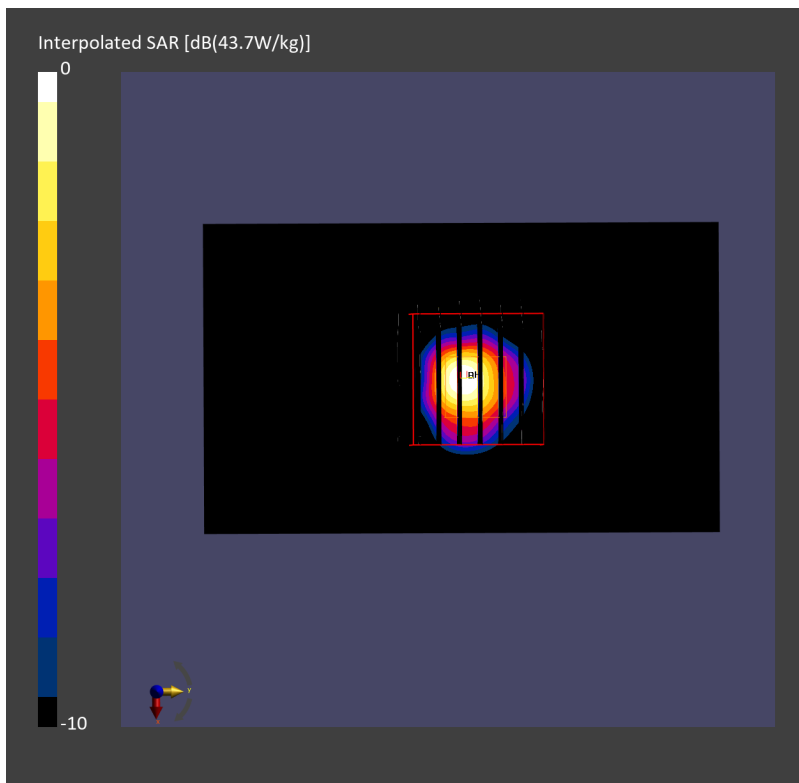
Power Drift = 0.06 dB

SAR (1g) = 28.9 W/kg; SAR (8g) = 6.55 W/kg; SAR (10g) = 5.35 W/kg

Smallest distance from peaks to all points 3 dB below = 4.6 mm

Ratio of SAR at M2 to SAR at M1 = 51.7 %

psAPD (1.0cm², sq) = 289 [W/m²]; psAPD (4.0cm², sq) = 131 [W/m²]



System Check_Head_2450MHz

DUT: D2450V2 - SN736

Communication System: CW; Frequency: 2450.000 MHz; Duty Cycle: 1:1

Medium: HSL_2450_240419 Medium parameters used: $f=2450.000$ MHz; $\sigma=1.82$ S/m; $\epsilon_r=39.2$

Ambient Temperature: 23.5°C; Liquid Temperature: 22.5°C

DASY8 Configuration:

- Probe: EX3DV4 - SN7822; ConvF(6.89, 6.89, 7.21); Calibrated: 2023-08-02
- Sensor-Surface: 1.4 mm
- Electronics: DAE4ip Sn1823; Calibrated: 2023-07-31
- Phantom: Twin-SAM V8.0 (30deg probe tilt); Serial: 2149; Section: Flat
- Measurement Software: 16.2.4.2524
- UID: CW, 0--

Pin=17.0dBm/Area Scan (40.0 mm x 80.0 mm): Measurement Grid: 10.0 mm x 10.0 mm

SAR (1g) = 2.45 W/kg; SAR (10g) = 1.12 W/kg;

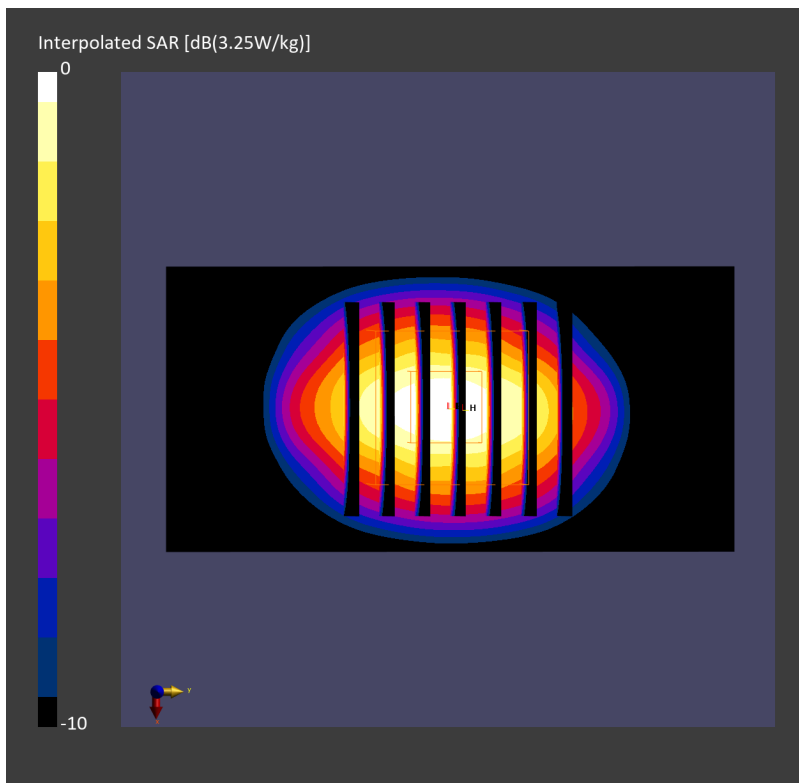
Pin=17.0dBm/Zoom Scan (30.0 mm x 30.0 mm x 30.0 mm): Measurement Grid: 5.0 mm x 5.0 mm x 1.5 mm

Power Drift = 0.03 dB

SAR (1g) = 2.46 W/kg; SAR (8g) = 1.28 W/kg; SAR (10g) = 1.16 W/kg

Smallest distance from peaks to all points 3 dB below = 9.0 mm

Ratio of SAR at M2 to SAR at M1 = 80.8 %



System Check_Head_1640MHz

DUT: D1640V2 - SN346

Communication System: CW; Frequency: 1640.000 MHz

Medium: HSL_1640_240327 Medium parameters used: $f=1640.000$ MHz; $\sigma=1.29$ S/m; $\epsilon_r=40.1$

Ambient Temperature: 23.1°C; Liquid Temperature: 22.1°C

DASY6 Configuration:

- Probe: EX3DV4 - SN3642; ConvF(8.29, 8.29, 8.29); Calibrated: 2023-04-26
- Sensor-Surface: 1.4 mm
- Electronics: DAE4 Sn854; Calibrated: 2023-08-17
- Phantom: Twin-SAM V5.0 (30deg probe tilt); Serial: 1719; Section: Flat
- Measurement Software: 16.2.4.2524
- UID: CW, 0--

Pin=17.0dBm/Area Scan (40.0 mm x 90.0 mm): Measurement Grid: 10.0 mm x 15.0 mm

SAR (1g) = 1.67 W/kg; SAR (10g) = 0.899 W/kg;

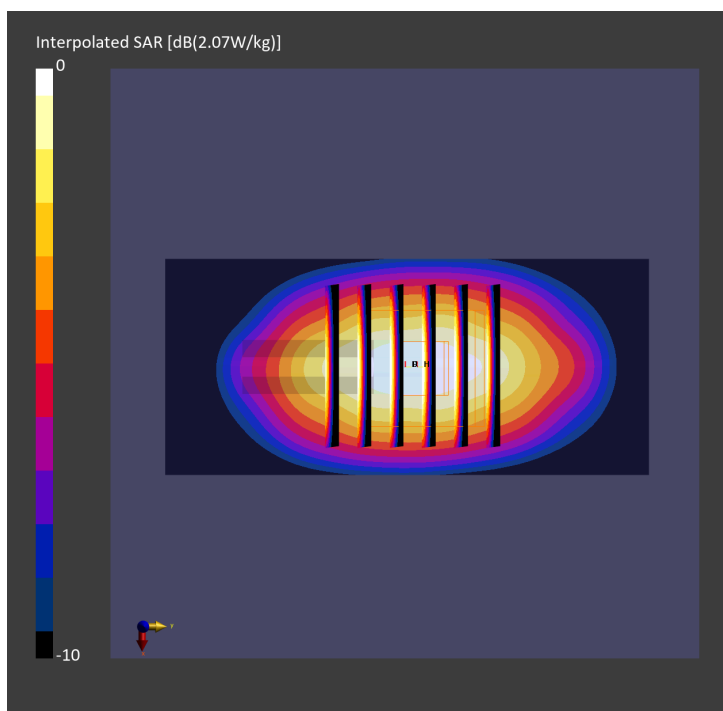
Pin=17.0dBm/Zoom Scan (30.0 mm x 30.0 mm x 30.0 mm): Measurement Grid: 6.0 mm x 6.0 mm x 1.5 mm

Power Drift = 0.03 dB

SAR (1g) = 1.63 W/kg; SAR (8g) = 0.966 W/kg; SAR (10g) = 0.894 W/kg

Smallest distance from peaks to all points 3 dB below = 10.8 mm

Ratio of SAR at M2 to SAR at M1 = 89.8 %



System Check_Head_2000MHz

DUT: D2000V2 - SN1010

Communication System: CW; Frequency: 2000.000 MHz

Medium: HSL_2000_240330 Medium parameters used: $f=2000.000$ MHz; $\sigma=1.44$ S/m; $\epsilon_r=39.1$

Ambient Temperature: 23.3°C; Liquid Temperature: 22.3°C

DASY6 Configuration:

- Probe: EX3DV4 - SN3642; ConvF(7.8, 7.8, 7.8); Calibrated: 2023-04-26
- Sensor-Surface: 1.4 mm
- Electronics: DAE4 Sn854; Calibrated: 2023-08-17
- Phantom: Twin-SAM V5.0 (30deg probe tilt); Serial: 1719; Section: Flat
- Measurement Software: 16.2.4.2524
- UID: CW, 0--

Pin=17.0dBm/Area Scan (40.0 mm x 80.0 mm): Measurement Grid: 10.0 mm x 10.0 mm

SAR (1g) = 2.07 W/kg; SAR (10g) = 1.05 W/kg;

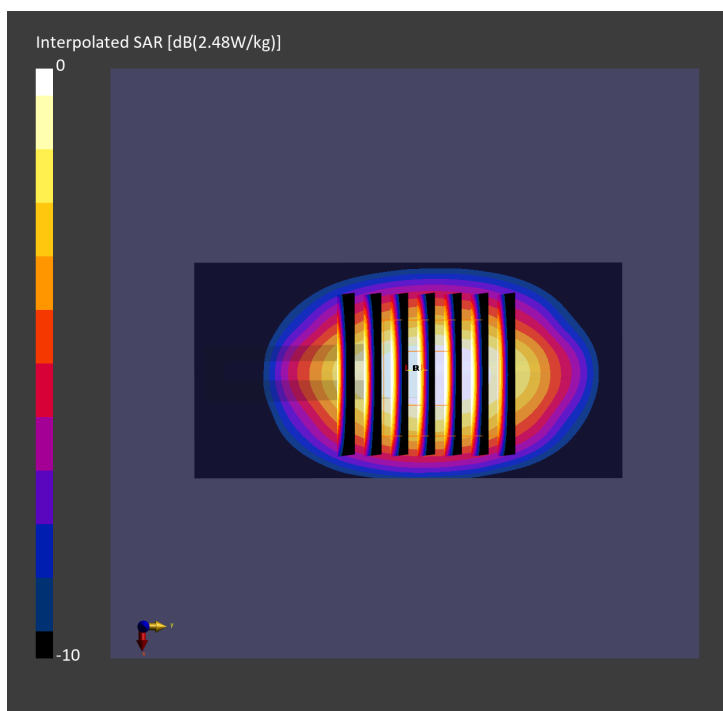
Pin=17.0dBm/Zoom Scan (30.0 mm x 30.0 mm x 30.0 mm): Measurement Grid: 5.0 mm x 5.0 mm x 1.5 mm

Power Drift = -0.01 dB

SAR (1g) = 2.07 W/kg; SAR (8g) = 1.15 W/kg; SAR (10g) = 1.05 W/kg

Smallest distance from peaks to all points 3 dB below = 9.9 mm

Ratio of SAR at M2 to SAR at M1 = 81.7 %



System Check_Head_13MHz

DUT: CLA13-1022

Communication System: CW; Frequency: 13 MHz; Duty Cycle: 1:1

Medium: HSL_13_240328 Medium parameters used : $f = 13 \text{ MHz}$; $\sigma = 0.728 \text{ S/m}$; $\epsilon_r = 54.685$; $\rho = 1000 \text{ kg/m}^3$

Ambient Temperature : $23.6 \text{ }^\circ\text{C}$; Liquid Temperature : $22.6 \text{ }^\circ\text{C}$

DASY5 Configuration:

- Probe: EX3DV4 - SN7306; ConvF(16.9, 16.9, 16.9) @ 13 MHz; Calibrated: 2023/7/18
- Sensor-Surface: 1.4mm (Mechanical Surface Detection)
- Electronics: DAE4 Sn778; Calibrated: 2024/1/22
- Phantom: ELI v4.0_Mid; Type: QDOVA001AA; Serial: TP:1026
- Measurement SW: DASY52, Version 52.10 (4); SEMCAD X Version 14.6.14 (7483)

Pin=1000mW/Area Scan (81x81x1): Interpolated grid: $dx=1.500 \text{ mm}$, $dy=1.500 \text{ mm}$

Maximum value of SAR (interpolated) = 1.12 W/kg

Pin=1000mW/Zoom Scan (5x5x7)/Cube 0: Measurement grid: $dx=8\text{mm}$, $dy=8\text{mm}$, $dz=5\text{mm}$

Reference Value = 38.63 V/m ; Power Drift = -0.07 dB

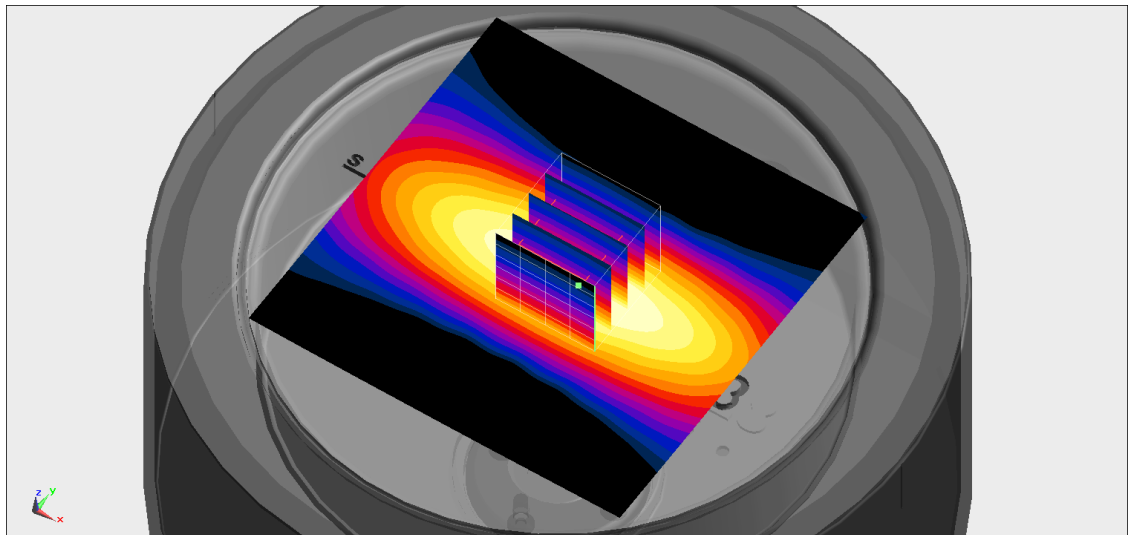
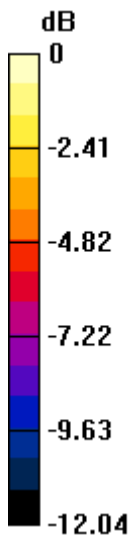
Peak SAR (extrapolated) = 1.39 W/kg

SAR(1 g) = 0.612 W/kg ; SAR(10 g) = 0.367 W/kg

Smallest distance from peaks to all points 3 dB below = 16 mm

Ratio of SAR at M2 to SAR at M1 = 54%

Maximum value of SAR (measured) = 1.10 W/kg



0 dB = 1.10 W/kg = 0.41 dBW/kg

Measurement Report for Device

Device Under Test Properties

Model, Manufacturer	Dimensions [mm]	Software Version	DUT Type
Device,	100.0 x 100.0 x 172.0	3.2.0.1840	5G Verification Source

Exposure Conditions

Phantom Section	Position, Test Distance [mm]	Frequency [MHz]	Conversion Factor
5G	FRONT, 10.00	10000.0	1.0

Hardware Setup

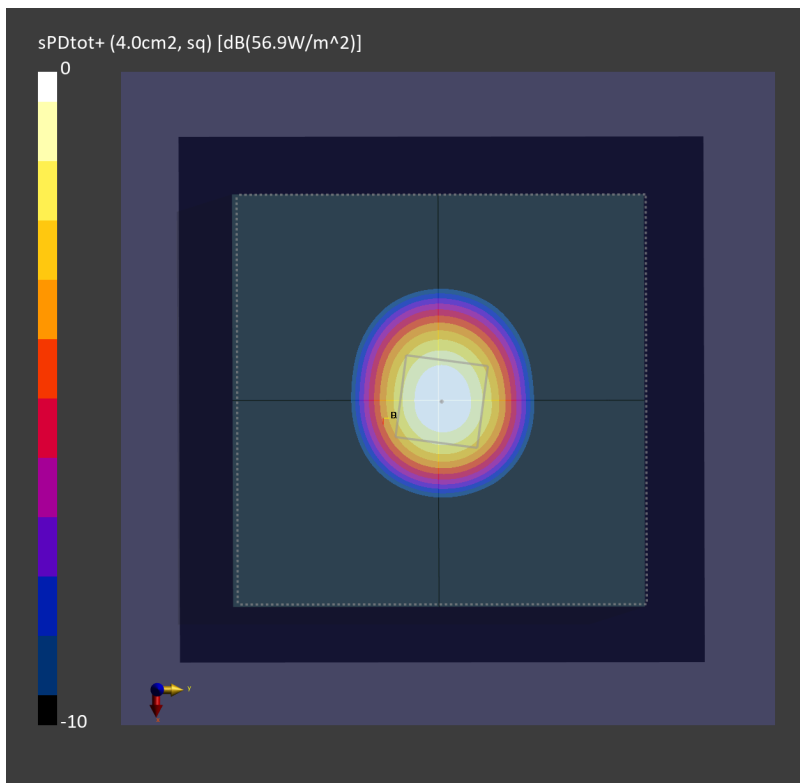
Phantom	Medium	Probe, Calibration Date	DAE, Calibration Date
mmWave - 1044	Air -	EUmmWV4 - SN9461_F1-55GHz, 2023-10-12	DAE4 Sn703, 2023-05-16

Scans Setup

Scan Type	5G Scan
Grid Extents [mm]	120.0 x 120.0
Grid Steps [lambda]	0.25 x 0.25
Sensor Surface [mm]	10.0

Measurement Results

Date	2024-03-14
Avg. Area [cm ²]	4.00
psPDn+ [W/m ²]	56.7
psPDtot+ [W/m ²]	56.9
H _{max} [A/m]	0.411
E _{max} [V/m]	155
max _(Stot) [W/m ²]	63.1
Power Drift [dB]	0.03
IPDn	103



Measurement Report for Device

Device Under Test Properties

Model, Manufacturer	Dimensions [mm]	Software Version	DUT Type
Device,	100.0 x 100.0 x 172.0	3.2.0.1840	5G Verification Source

Exposure Conditions

Phantom Section	Position, Test Distance [mm]	Frequency [MHz]	Conversion Factor
5G	FRONT, 10.00	10000.0	1.0

Hardware Setup

Phantom	Medium	Probe, Calibration Date	DAE, Calibration Date
mmWave - 1044	Air -	EUmmWV4 - SN9461_F1-55GHz, 2023-10-12	DAE4 Sn703, 2023-05-16

Scans Setup

Scan Type	5G Scan
Grid Extents [mm]	120.0 x 120.0
Grid Steps [lambda]	0.25 x 0.25
Sensor Surface [mm]	10.0

Measurement Results

Date	2024-03-15
Avg. Area [cm ²]	4.00
psPDn+ [W/m ²]	53.2
psPDtot+ [W/m ²]	53.3
H _{max} [A/m]	0.401
E _{max} [V/m]	151
max _(Stot) [W/m ²]	59.3
Power Drift [dB]	0.00
IPDn	95.4

