

# HEARING AID COMPATIBILITY T-COIL TEST REPORT

FCC ID : A4RGGH2X  
Equipment : Phone  
Model Name : GGH2X, GC15S  
Results : PASS  
Applicant : Google LLC  
1600 Amphitheatre Parkway,  
Mountain View, CA 94043 USA  
Standard : FCC 47 CFR §20.19  
ANSI C63.19-2019

The product was received on Feb. 07, 2024 and testing was started from Feb. 20, 2024 and completed on Feb. 28, 2024. We, SPORTON INTERNATIONAL INC., would like to declare that the tested sample provide by manufacturer and the test data has been evaluated in accordance with the test procedures given in ANSI 63.19-2019 / 47 CFR Part 20.19 and has been pass the FCC requirement.

The test results in this report apply exclusively to the tested model / sample. Without written approval of SPORTON INTERNATIONAL INC. Laboratory, the test report shall not be reproduced except in full.



Approved by: Cona Huang / Deputy Manager



**Sporton International Inc. Wensan Laboratory**

No.58, Aly. 75, Ln. 564, Wenhua 3rd, Rd., Guishan Dist., Taoyuan City 333010, Taiwan



## Table of Contents

<b>1. General Information</b>	<b>4</b>
<b>2. Testing Location</b>	<b>5</b>
<b>3. Applied Standards</b>	<b>5</b>
<b>4. Air Interface and Operating Mode</b>	<b>6</b>
<b>5. T-Coil coupling mode requirements</b>	<b>7</b>
5.1 T-Coil coupling qualifying field strengths	7
5.2 Frequency Response	7
5.3 Desired ABM signal, undesired ABM field qualification requirements	8
5.4 T-Coil measurement and reference plane	9
<b>6. Test procedure for T-Coil signal</b>	<b>10</b>
<b>7. Test Equipment List</b>	<b>16</b>
<b>8. T-Coil testing for CMRS Voice</b>	<b>17</b>
8.1 GSM Evaluation Results	17
8.2 UMTS Evaluation Results	18
8.3 VoLTE Evaluation Results	19
8.4 VoNR Evaluation Results	20
8.5 VoWiFi Evaluation Results	21
<b>9. T-Coil testing for OTT Voice Calling</b>	<b>22</b>
<b>10. Uncertainty Assessment</b>	<b>26</b>
<b>11. References</b>	<b>27</b>
<b>Appendix A. Plots of T-Coil Measurement</b>	
<b>Appendix B. DASy Calibration Certificate</b>	
<b>Appendix C. Test Setup Photos</b>	



### History of this test report

Report No.	Version	Description	Issued Date
HA3D2001B	Rev. 01	Initial issue of report	May. 13, 2024
HA3D2001B	Rev. 02	Update section4, 8, 9	May. 24, 2024



**1. General Information**

Product Feature & Specification	
Applicant Name	Google LLC
Equipment Name	Phone
Model Name	GGH2X, GC15S
FCC ID	A4RGGH2X
S/N	41251FDKD000B0
Frequency Band	GSM850: 824.2 MHz ~ 848.8 MHz GSM1900: 1850.2 MHz ~ 1909.8 MHz WCDMA Band II: 1850 MHz ~ 1910 MHz WCDMA Band IV: 1710 MHz ~ 1755 MHz WCDMA Band V: 824 MHz ~ 849 MHz LTE Band 2: 1850 MHz ~ 1910 MHz LTE Band 4: 1710 MHz ~ 1755 MHz LTE Band 5: 824 MHz ~ 849 MHz LTE Band 7: 2500 MHz ~ 2570 MHz LTE Band 12: 699 MHz ~ 716 MHz LTE Band 13: 777 MHz ~ 787 MHz LTE Band 14: 788 MHz ~ 798 MHz LTE Band 17: 704 MHz ~ 716 MHz LTE Band 25: 1850 MHz ~ 1915 MHz LTE Band 26: 814 MHz ~ 849 MHz LTE Band 30: 2305 MHz ~ 2315 MHz LTE Band 38: 2570 MHz ~ 2620 MHz LTE Band 41: 2496 MHz ~ 2690 MHz LTE Band 48: 3550 MHz ~ 3700 MHz LTE Band 66: 1710 MHz ~ 1780 MHz LTE Band 71: 663 MHz ~ 698 MHz 5G NR n2 : 1850 MHz ~ 1910 MHz 5G NR n5 : 824 MHz ~ 849 MHz 5G NR n7 : 2500 MHz ~ 2570 MHz 5G NR n12 : 699 MHz ~ 716 MHz 5G NR n14 : 788 MHz ~ 798 MHz 5G NR n25 : 1850 MHz ~ 1915 MHz 5G NR n26 : 814 MHz ~ 849 MHz 5G NR n30 : 2305 MHz ~ 2315 MHz 5G NR n38 : 2570 MHz ~ 2620 MHz 5G NR n41 : 2496 MHz ~ 2690 MHz 5G NR n48 : 3550 MHz ~ 3700 MHz 5G NR n66 : 1710 MHz ~ 1780 MHz 5G NR n70 : 1695 MHz ~ 1710 MHz 5G NR n71 : 663 MHz ~ 698 MHz 5G NR n77: 3700 MHz ~ 3980 MHz, 3450MHz ~ 3550MHz 5G NR n78: 3700 MHz ~ 3800 MHz, 3450MHz ~ 3550MHz 5G NR n258 : 24.25 GHz~24.45 GHz, 24.75GHz ~25.25GHz 5G NR n260 : 37 GHz~40 GHz 5G NR n261 : 27.5 GHz~28.35 GHz NTN Band 23: 2000 MHz ~2020 MHz NTN Band 255: 1626.5 MHz ~ 1660.5 MHz WLAN 2.4 GHz Band: 2400 MHz ~ 2483.5 MHz WLAN 5.2 GHz Band: 5150 MHz ~ 5250 MHz WLAN 5.3 GHz Band: 5250 MHz ~ 5350 MHz WLAN 5.6 GHz Band: 5470 MHz ~ 5725 MHz WLAN 5.8 GHz Band: 5725 MHz ~ 5850 MHz WLAN 5.9 GHz Band: 5850 MHz ~ 5895 MHz WLAN 6E: 5925 MHz ~ 6425 MHz, 6425 MHz ~ 6525 MHz, 6525 MHz ~ 6875 MHz, 6875 MHz ~ 7125 MHz Bluetooth: 2400 MHz ~ 2483.5 MHz NFC: 13.56 MHz WPC: 110 kHz ~ 148.5 kHz(Rx) UWB: 6489.6 MHz, 7987.2 MHz Thread: 2405 MHz ~ 2480 MHz



<b>Mode</b>	GSM/GPRS/EGPRS UMTS: RMC/AMR 12.2Kbps, HSDPA, HSUPA LTE: QPSK, 16QAM, 64QAM, 256QAM 5G NR: DFT-s-OFDM/CP-OFDM, Pi/2 BPSK/QPSK/16QAM/64QAM/256QAM NTN: BPSK,QPSK WLAN:802.11a/b/g/n/ac/ax/be HT20/HT40/VHT20/VHT40/VHT80/VHT160/HE20/HE40/HE80/HE160/EHT20/EHT40/EHT80/EHT160 Bluetooth BR/EDR/LE/CS NFC: ASK WPC: ASK UWB: BPM-BPSK/HPSK Thread: QPSK
-------------	--

**Reviewed by: Jason Wang**

**Report Producer: Daisy Peng**

## **2. Testing Location**

Sporton Lab is accredited to ISO 17025 by Taiwan Accreditation Foundation (TAF code: 3786) and the FCC designation No. TW3786 under the FCC 2.948(e) by Mutual Recognition Agreement (MRA) in FCC test.

Testing Laboratory	
Test Site	SPORTON INTERNATIONAL INC.
Test Site Location	No.58, Aly. 75, Ln. 564, Wenhua 3rd, Rd., Guishan Dist., Taoyuan City 333010, Taiwan TEL:+886-3-327-0838 FAX: +886-3-327-0855
Test Site No.	Sporton Site No.: <b>SAR15-HY</b>

## **3. Applied Standards**

- FCC CFR47 Part 20.19
- ANSI C63.19-2019
- FCC KDB 285076 D01 HAC Guidance v06r04
- FCC KDB 285076 D02 T Coil testing v04
- FCC KDB 285076 D03 HAC FAQ v01r06



### 4. Air Interface and Operating Mode

Air Interface	Band MHz	Type	C63.19 Tested	Simultaneous Transmitter	Name of Voice Service	Power State for HAC Compliance				
GSM	GSM850	VO	Yes	WLAN, BT, Thread	CMRS Voice	Head				
	GSM1900									
	EDGE850	VD	Yes		Google Meet <sup>(1)</sup>					
	EDGE1900									
UMTS	Band 2	VO	Yes	WLAN, BT, Thread	CMRS Voice	Pmax				
	Band 4									
	Band 5									
	HSPA	VD	Yes		Google Meet <sup>(1)</sup>					
LTE	Band 2	VD	Yes	5G NR, WLAN, BT, Thread	VoLTE / Google Meet <sup>(1)</sup>	Pmax				
	Band 4									
	Band 5									
	Band 7									
	Band 12									
	Band 13									
	Band 14									
	Band 17									
	Band 25									
	Band 26									
	Band 30									
	Band 38									
	Band 41									
	Band 48									
	Band 66									
	Band 71									
5G NR	n2	VD	Yes	LTE, WLAN, BT, Thread	VoNR / Google Meet <sup>(1)</sup>	Pmax				
	n5									
	n7									
	n12									
	n14									
	n25									
	n26									
	n30									
	n38									
	n41									
	n48									
	n66									
	n70									
	n71									
	n77									
	n78									
	n258						VD	No <sup>(2)</sup>	Google Meet <sup>(1)</sup>	NA
	n260									
	n261									
Wi-Fi	2450	VD	Yes	GSM, WCDMA, LTE, 5G NR, 5G/6GHz WLAN	VoWiFi / Google Meet <sup>(1)</sup>	Head				
	5200									
	5300									
	5500									
	5800 / 5900	VD	Yes <sup>(3)</sup>	GSM, WCDMA, LTE, 5G NR, 2.4G WLAN, BT, Thread	VoWiFi / Google Meet <sup>(1)</sup>	Head				
	U-NII 5									
	U-NII 6									
	U-NII 7									
U-NII 8	VD	No <sup>(2)</sup>	Google Meet <sup>(1)</sup>	Head						
NTN	B23	DT	No	NA	NA	NA				
	B255									
BT / Thread	2450	DT	No	GSM, WCDMA, LTE, 5G NR, 5G/6GHz WLAN	NA	NA				

**Type Transport:**  
 VO= Voice only  
 DT= Digital Transport only (no voice)  
 VD= CMRS and IP Voice Service over Digital Transport

**Remark:**

- For protocols not listed in Table 6.1 of ANSI C63.19:2019, the average speech level of -20 dBm0 should be used.
- The FR2 n258/260/261 and U-NII 6/7/8 were above 6GHz and were not evaluated due to outside of the current scope of ANSI C63.19 and FCC HAC regulations.
- The UNII-5 was evaluated for operations which are entirely below 6 GHz, above 6 GHz were not evaluated due outside of the current scope of ANSI C63.19 and FCC HAC regulations.
- Because features of Google Meet allow the option of voice-only communications, Meet has been tested for HAC/T-Coil compatibility to ensure the best user experience.
- The device have similar frequency in some bands of B12/17, 5/26, 4/66, 2/25, 38/41, 77/78, since the supported frequency spans for the smaller LTE and NR bands are completely cover by the larger LTE and NR bands, therefore, only larger LTE and NR bands were required to be tested for hearing-aid compliance.
- The product only 3G/4G/5G support TAS feature, therefore UMTS/LTE/5GFR1 HAC were tested at Pmax level. The GSM and WIFI set to highest device transmit power in a held to the ear mode.
- Pmax is the maximum output power for the handset for the indicated air interface.
- Head refers to the handset's maximum RF power possible for all user conditions during held-to-ear scenarios.

## 5. T-Coil coupling mode requirements

### 5.1 T-Coil coupling qualifying field strengths

When measured as specified in this standard, there are two groups of qualifying measurement points:

Primary group: A qualifying measurement point shall have its T-Coil signal, desired ABM signal,  $\geq -18$  dB(A/m) at 1 kHz, in a 1/3 octave band filter. These measurements shall be made with the WD operating at a reference input level as specified in Table 6.1. simultaneously, the qualifying measurement point shall have its weighted magnetic noise, undesired ABM field  $\leq -38$  dB(A/m).

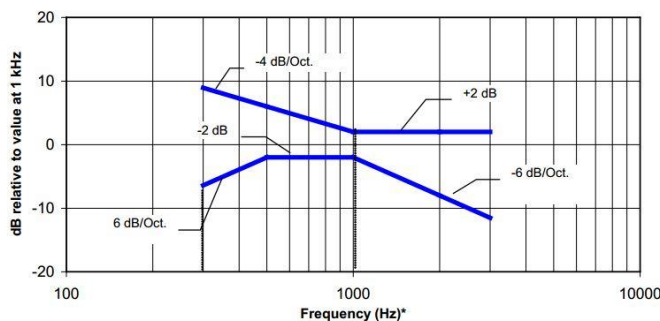
Secondary group: A qualifying measurement point shall have its weighted magnetic noise, undesired ABM field  $\leq -38$  dB(A/m). This group inherently includes all the members of the primary group.

These levels are designed to be compatible with hearing aids that produce the same acoustic output level for either an acoustic input level of 65 dB SPL or a magnetic input level of  $-25$  dB(A/m) (56.2 mA/m) 39 at either 1.0 kHz or 1.6 kHz. The hearing aid operational measurements are performed per ANSI S3.22-2014

### 5.2 Frequency Response

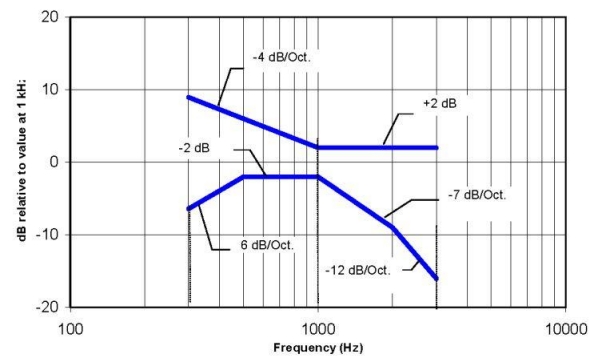
The frequency response of the magnetic field, measured in 1/3 octave bands, shall follow the response curve specified in this subclause, over the frequency range 300 Hz to 3 kHz.

Figure 6.4 and Figure 6.5 provide the boundaries for the specified frequency. These response curves are for true field strength measurements of the T-Coil signal. Thus the 6 dB/octave probe response has been corrected from the raw readings.



NOTE—Frequency response is between 300 Hz and 3 kHz.

**Figure 6.4—Magnetic field frequency response for WDs with a maximum field  $\leq -15$  dB(A/m) at 1 kHz**



NOTE—Frequency response is between 300 Hz and 3000 Hz.

**Figure 6.5—Magnetic field frequency response for WDs with a maximum field that exceeds  $-15$  dB(A/m) at 1 kHz**

**5.3 Desired ABM signal, undesired ABM field qualification requirements**

**<Non-2G GSM operating modes>**

The goal of this requirement is to ensure an adequate area where desired ABM signal is sufficiently strong to be heard clearly and a larger area where undesired ABM field is sufficiently low as to avoid undue annoyance. Qualifying measurement points shall fulfill the requirements of ANSI 63.19-2019 section 6.6.2; both the primary and secondary group requirements shall be met:

- The primary group shall include at least 75 measurement points
- The secondary group shall include at least 300 contiguous measurement points

Additionally, to avoid an oddly shaped area of low noise, the secondary group shall include at least one longitudinal column of at least 10 contiguous qualifying points and at least one transverse row containing at least 15 contiguous qualifying points.

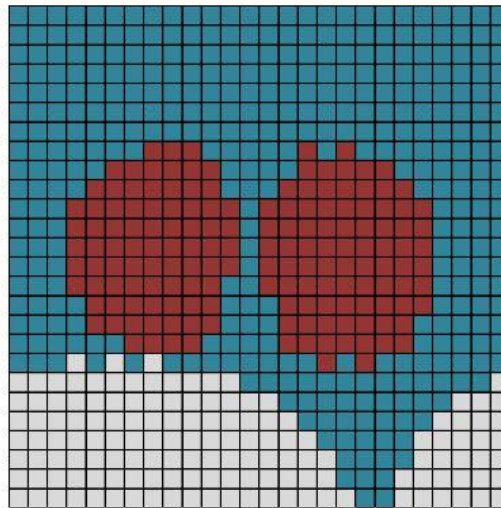
Figure 6.6 is an example of a qualifying scan. The total number of primary group qualifying measurement points is 161, which is  $\geq 75$ . The total number of secondary group qualifying points is 536, which is  $\geq 300$

The secondary group has a longitudinal column of 26, which is  $\geq 10$ , and a transverse row also of 26 contiguous points, which is  $\geq 15$

**<2G GSM operating modes>**

If the 2G GSM operating mode(s) are selected for qualification, the qualifying measurement points shall fulfill the requirements of ANSI 63.19-2019 section 6.6.2; both the primary and secondary group requirements shall be met:

- The primary group shall include at least 25 measurement points
- The secondary group shall include at least 125 contiguous measurement points

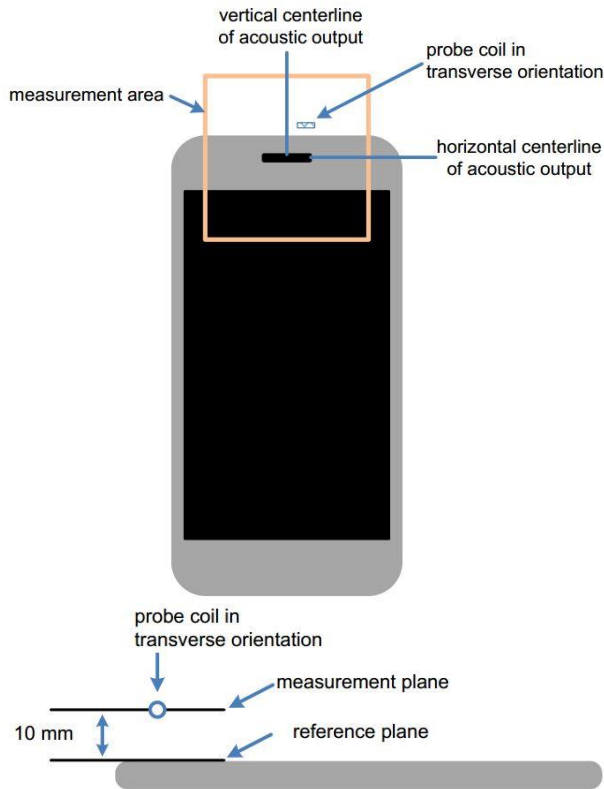


Red (primary group): AB desired ABM signal  $M1 \geq -18$  dB(A/m) and undesired ABM field  $\leq -38$  dB(A/m)  
 Blue and red (secondary group): undesired ABM field  $\leq -38$  dB(A/m)

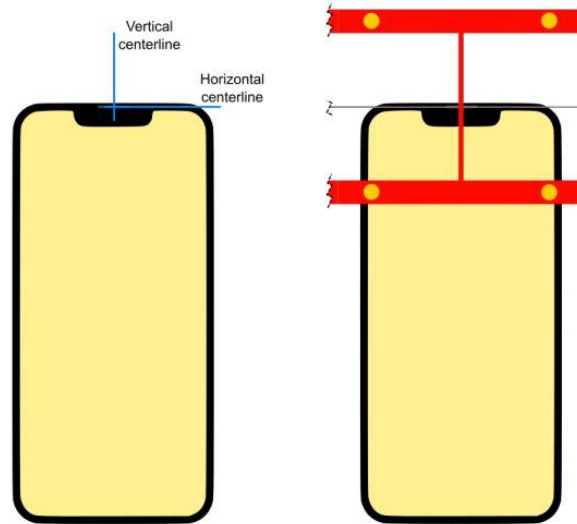
**Figure 6.6—An example of a qualifying desired ABM signal, undesired ABM field scan:**



**5.4 T-Coil measurement and reference plane**



**Measurement and reference planes probe orientation for WD audio frequency magnetic field measurements**



**Device Under Test Positioning under the Test Arch**

**The T-Coil measurement plane, reference plane and other measurement parameters shall be:**

- The reference plane is the planar area that contains the highest point in the area of the phone that normally rests against the user's ear. It is parallel to the centerline of the receiver area of the phone and is defined by the points of the receiver-end of the WD handset, which, in normal handset use, rest against the ear.
- The measurement plane is parallel to, and 10 mm in front of, the reference plane.
- The reference axis is normal to the reference plane and passes through the center of the acoustic output (or the center of the hole array); or may be centered on or near a secondary inductive source. The actual location of the reference axis and resultant measurement area shall be noted in the test report.
- The measurement area shall be 50 mm by 50 mm. The measurement area for both desired ABM signal and undesired ABM field may be located where the transverse magnetic measurements are optimum with regard to the requirements. However, the measurement area should be in the vicinity of the acoustic output of the WD and shall be located in the same half of the phone as the WD receiver. In a WD handset with a centered receiver and a circularly symmetrical magnetic field, the measurement axis and the reference axis would coincide.
- Measurements of desired ABM signal strength and undesired ABM field are made at 2.0 mm ± 0.5 mm or 4 mm intervals in an X-Y measurement area pattern over the entire measurement area (676 measurement points total); either all measured, or measured plus interpolated, per ANSI 63.19-2019 section 6.4
- Desired ABM signal frequency response is measured at a single location at or near the maximum
- desired ABM signal strength location.
- The actual locations of the measurement points shall be noted in the test report.



## **6. Test procedure for T-Coil signal**

This subclause describes the procedures used to measure the ABM (T-Coil) performance of the WD. Measurements shall be performed over a measurement area 50 mm square, in the measurement plane, as specified in ANSI 63.19-2019 A.3. The measurement area shall be scanned with a uniform measurement point spacing of 2.0 mm  $\pm$  0.5 mm in each X-Y axis of the plane, yielding 676 measurement points with approximately even spacing throughout the area

Optionally, measurement point spacing may be increased to 4 mm, with interpolation employed to yield the required 676 equivalent measurement points distributed uniformly over the 50 mm square measurement area. Interpolated points shall be derived from the average of the linear representations of the field strengths of the nearest two or four equidistant measured points. The area of measurement is increased to a 52 mm square so that edge rows and columns of the required 50 mm square can be either measured or interpolated, with none extrapolated.

In addition to measuring the desired ABM signal levels, the weighted magnitude of the unintended signal shall also be determined. Weighting of the unintended and undesired ABM field shall be by the spectral and temporal weighting described in ANSI 63.19-2019 D.4 through D.6

In order to assure that the required signal quality is measured, the measurement of the intended signal and the measurement of the unintended signal shall be made at the same locations. Measurements shall not include undesired influence from the WD's RF field; therefore, use of a coaxial connection to a base station simulator or non-radiating load might be necessary. However, even then with a coaxial connection to a base station simulator or non-radiating load there could still be RF leakage from the WD, which could interfere with the desired measurement. Pre-measurement checks should be made to avoid this possibility. All measurements shall be done with the WD operating on battery power with an appropriate normal speech audio signal input level given in ANSI 63.19-2019 Table 6.1. If the device display can be turned off during a phone call, then that may be done during the measurement as well. If tested with the display in the off state this shall be documented in the test report

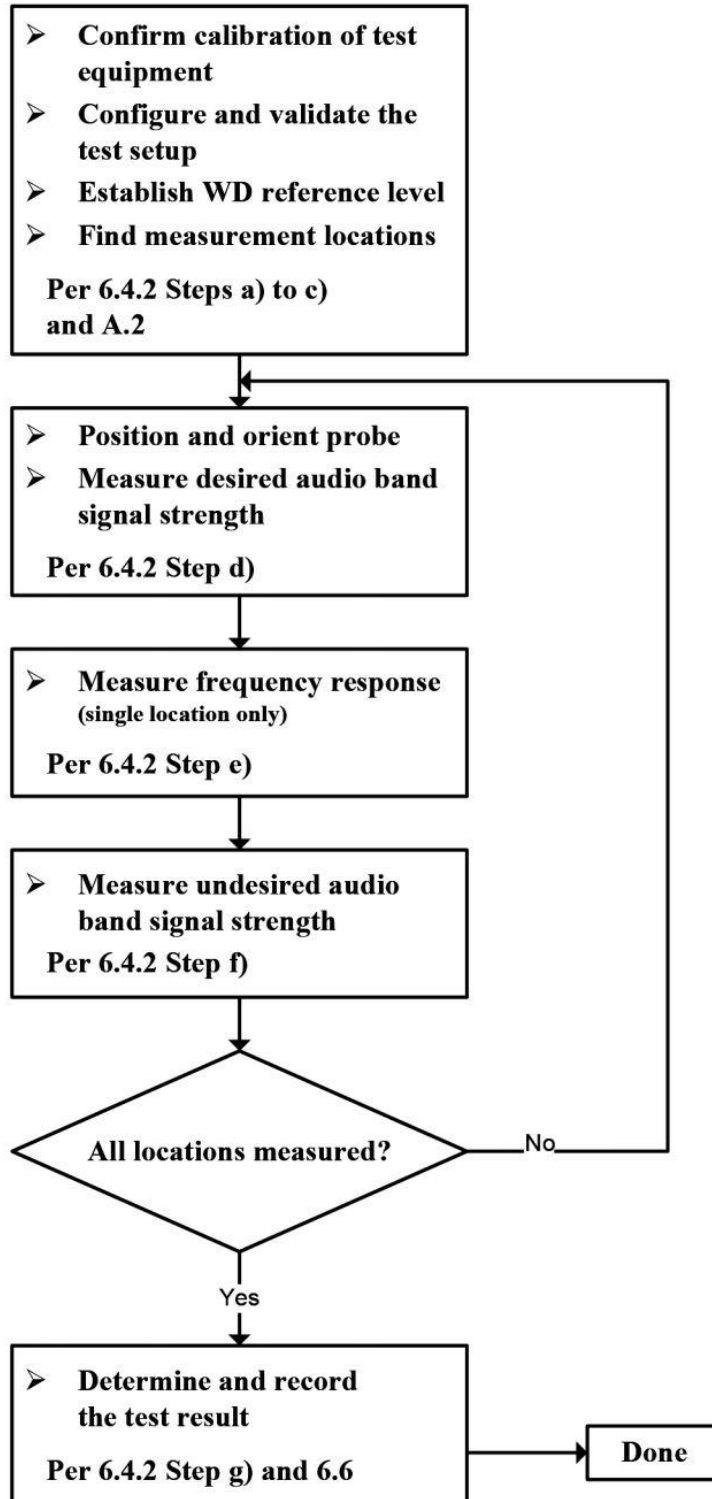
Measurements shall be performed with the probe coil oriented in the transverse direction, as illustrated in ANSI 63.19-2019 A.3, that is, aligned in the plane of the measurement area and perpendicular to the long dimension of the WD. A multi-stage sequence consists of first measuring the field strength of the desired T-Coil signal (desired ABM signal) that is useful to a hearing aid T-Coil at each specified measurement point. The undesired magnetic component (undesired ABM field) is then measured in the same transverse orientation at each of the same measurement points. At a single location only, taken at or near the highest desired ABM signal reading, the desired ABM signal frequency response shall be determined in a third measurement stage. The flowchart in ANSI 63.19-2019 Figure 6.3 illustrates this three-stage process.

To minimize the need to test every WD operating mode to the telecoil requirements of ANSI 63.19-2019 Clause 6, it is permissible to exclude some subset of supported configurations. For a given WD, every mode that supports voice communication shall be considered for telecoil testing. However, if it can be demonstrated that a certain configuration will not be the worst-case telecoil configuration, such configurations may be excluded from the full telecoil scans of ANSI 63.19-2019 section 6.4. 34 For example, operating modes may be pre-screened by scanning for both desired ABM signal and undesired ABM field at a lower measurement point density than the final scans, thus saving considerable testing time by eliminating configurations that are excellent performers from more detailed testing for worst-case. In any case, the specific methods and criteria used to determine which configurations are excluded for a WD shall be explicitly stated and justified in the test report. To be considered for exclusion from telecoil testing, operating modes shall also be shown to pass the frequency response requirements of ANSI 63.19-2019 section 6.6.3.

Many factors could affect telecoil test results. RF power level and amplitude modulation characteristics as well as the specific current paths within the WD associated with the RF output stage(s), the display, and processing circuitry could affect the undesired ABM field. Audio codec implementation and acoustic receiver characteristics could also affect the desired ABM signal). Therefore, any justifications for exclusions should be thorough documented. If an operating mode is under user control and instructions on how to place the WD in a less interfering condition is in the user instructions, those instructions may be followed in configuring the device for testing

Test flow for T-Coil signal test

**Test Instructions**

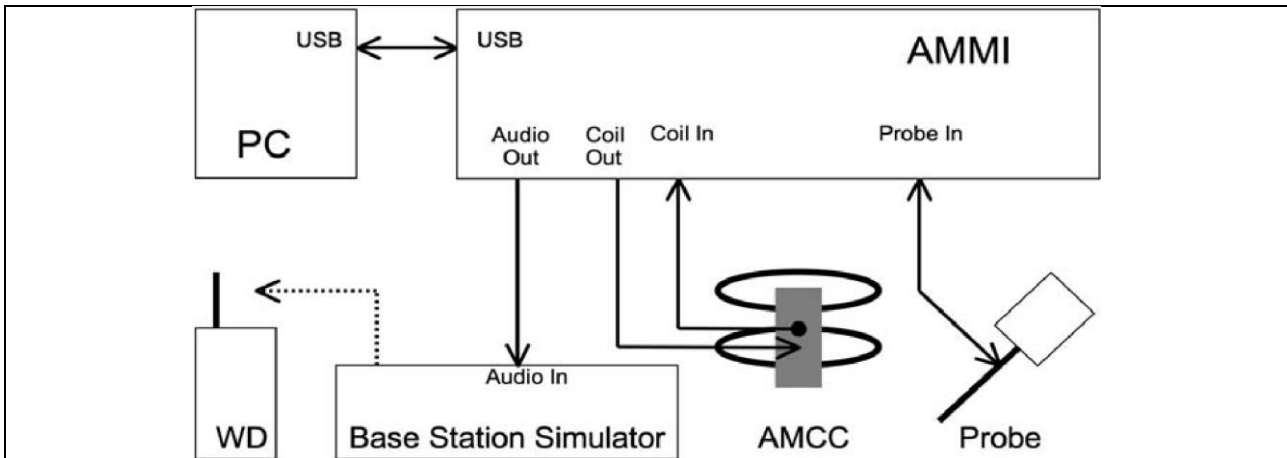




The following steps summarize the basic test flow for determining desired ABM signal and undesired ABM field. These steps assume that a sine wave or narrowband 1/3 octave signal can be used for the measurement of desired ABM signal level. An alternative procedure, yielding equivalent results, using a broadband excitation is described in ANSI 63.19-2019 section 6.5.

- a. A validation of the test setup and instrumentation shall be performed. This may be done using a TMFS or Helmholtz Coil. Measure the emissions and confirm that they are within tolerance of the expected values.
- b. Confirm that equipment that requires calibration has been calibrated, and that the noise level meets the requirements given in ANSI 63.19-2019 section 6.3.2.
- c. Position the WD in the test setup and connect the WD RF connector to a base station simulator or a non-radiating load (if necessary to control RF interference in the measurement equipment) as shown in section 6.1 or section 6.2.
- d. The drive level to the WD is set such that the reference input level specified in ANSI 63.19-2019 Table 6.1 is input to the base station simulator (or manufacturer's test mode equivalent) in the 1 kHz, 1/3 octave band. This drive level shall be used for the T-Coil signal test (desired ABM signal) at  $f = 1$  kHz. Either a sine wave at 1025 Hz, or a voice-like signal, band-limited to the 1 kHz 1/3 octave, as specified in 6.4.3, shall be used for the reference audio signal. If interference is found at 1025 Hz an alternative nearby reference audio signal frequency may be used. The same drive level will be used for the desired ABM signal frequency response measurements at each 1/3 octave band center frequency. The WD volume control may be set at any level up to maximum, provided that a signal at any frequency at maximum modulation would not result in clipping or signal overload.
- e. At each measurement location over the measurement area and in the transverse orientation, measure and record the desired 1 kHz T-Coil magnetic signal (desired ABM signal) as described in Step c).
- f. At or near a location representing a maximum in the just-measured desired ABM signal, measure and record the desired T-Coil magnetic signals (desired ABM signal at  $f_i$ ) as described in ANSI 63.19-2019 section 6.4.5.2 in each individual ISO 266:1975 R10 standard 1/3 octave band. The desired audio band input frequency ( $f_i$ ) shall be centered in each 1/3 octave band maintaining the same drive level as determined in Step c), and the reading taken for that band. Equivalent methods of determining the frequency response may also be employed, such as fast Fourier transform (FFT) analysis using noise excitation or input-output comparison using simulated speech. The full-band integrated or half-band integrated probe output, as described in ANSI 63.19-2019 D.9, may be used, as long as the appropriate calibration curve is applied to the measured result, so as to yield an accurate measurement of the field magnitude. (The resulting measurement shall be an accurate measurement in dB(A/m).) Compare the frequency response found to the requirements of ANSI 63.19-2019 section 6.6.3.
- g. At the same locations measured in Step d), measure and record the undesired broadband audio magnetic signal (undesired ABM field) with no audio signal applied (or digital zero applied, if appropriate) using the specified spectral weighting, the half-band integrator followed by the temporal weighting.
- h. Calculate and record the location and number of the measurement points that satisfy both the minimum desired ABM signal level and the maximum undesired ABM field level specified in ANSI 63.19-2019 section 6.6.2. Compare this to the requirements in ANSI 63.19-2019 section 6.6.4 and record the result.
- i. Calculate and record the location and number of the measurement points that satisfy the maximum undesired ABM field level and distribution requirements specified in ANSI 63.19-2019 section 6.6.4.

**Test Setup Diagram for GSM/UMTS/VoLTE/VoWiFi/VoNR**



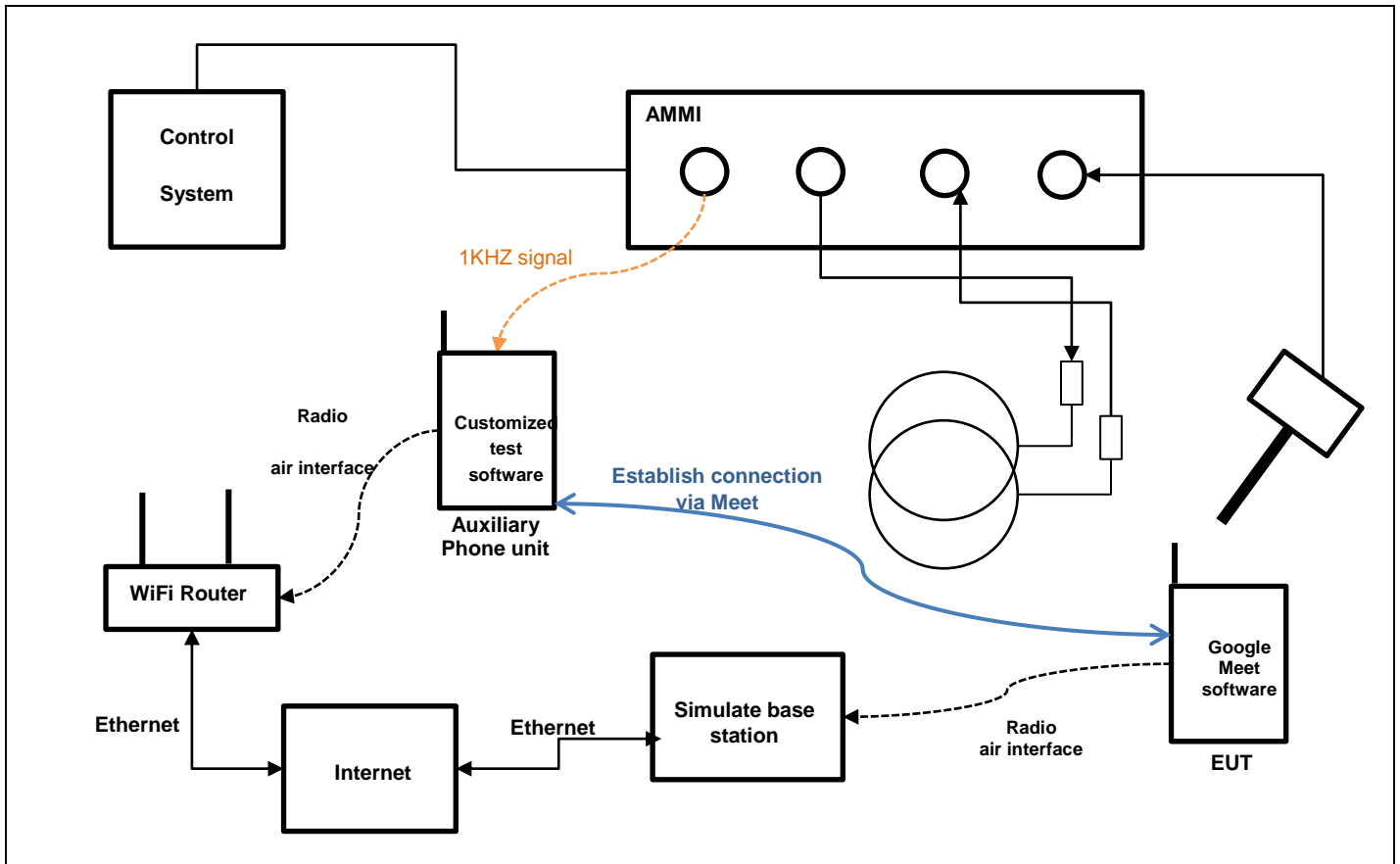
**General Note:**

1. Define the all applicable input audio level as below according to ANSI63.19-2019 table 6.1:
  - GSM input level: -16dBm0
  - UMTS input level: -16dBm0
  - VoLTE input level: -16dBm0
  - VoNR input level: -16dBm0
  - VoWiFi input level: -16dBm0
2. The test setup used for GSM/UMTS is via the callbox of CMW500 for T-coil measurement. The CMW500 input is calibrated and the relation between the analog input voltage and the internal level in dBm0 can be determined. The CMW500 can be manually configured to control the speech input level and ensure that the result is -16dBm0 for GSM/UMTS CMRS Voice connection.
3. Voice over Long-Term Evolution (VoLTE) is a standard for high-speed wireless communication for mobile phones and data terminals — including IoT devices and wearables. It is based on the IP Multimedia Subsystem (IMS) network, with specific profiles for control and media planes of voice service on LTE defined by GSMA in PRD IR.92. This approach results in the voice service (control and media planes) being delivered as data flows within the LTE data bearer. This means that there is no dependency on the legacy circuit-switched voice network to be maintained.
4. The test setup used for VoLTE and VoWiFi over IMS is via the callbox of CMW500 for T-coil measurement. The data application unit of the CMW500 is used to simulate the IP multimedia subsystem server. The CMW500 can be manually configured to control the speech input level and ensure that the result is -16dBm0 for VoLTE, and VoWiFi during the IMS connection.
5. The test setup used for VoNR over IMS is via the callbox of CMX500 for T-coil measurement, The data application unit of the CMX500 was used to simulate the IP multimedia subsystem server. The CMW500 can be manually configured to ensure and control the speech input level result is -16dBm0 for VoNR when the device during the IMS connection.
6. According to KDB 285076 D02, T-Coil testing for VoLTE, VoNR and VoWiFi requires test instrumentation that can (1) for the system to be able to establish an IP call from/to the handset under test, (2) through an IMS (IP Multimedia Subsystem) and SIP/IP server, (3) to an analog audio adapter containing the permissible set of codecs used by the device under test, and (4) inject the necessary C63.19 test tones at the average speech level for the measurement. The test setup is illustrated above Figure. The R&S CMW500 and CMX500 was used as system simulator for VoLTE, VoNR and VoWiFi T-Coil testing. The DAU (Data Application Unit) in CMW500, CMX500 integrates IMS and SIP/IP server that can establish VoLTE, VoNR and Wi-Fi calling, and transport the test tones from AMMI (Audio Magnetic Measuring Instrument) to EUT.

**<Example define the input level for GSM/UMTS/VoLTE/VoNR/VoWiFi>**

Gain Value	dBm0	Full scal Voltage	dB	AMMI audio out dBv (RMS)	AMCC Coil Out (dBv (RMS))
	3.14	1.5		0.51	
100	5.61		40	2.98	3.13
8.31	-16		18.39		-18.48
Signal Type	Duration (s)	Peak to RMS (dB)	RMS (dB)	Gain Factor	Gain Setting
1kHz sine	-	3	0	1	8.31
48k_voice_1kHz	1	16.2	-12.7	4.33	35.98
48k_voice_300-3000	2	21.6	-18.6	8.48	70.46

**Test Setup Diagram for OTT Voice Calling**



**General Note:**

1. Define the all applicable input audio level as below according to C63 and KDB 285076 D02v03:  
 - OTT Voice calling input Level: -20dBm0
2. OTT voice, such as that enabled when a user opts to communicate in a voice-only mode using the Google Meet application, is a methodology and group of technologies for the delivery of voice communications and multimedia sessions over the internet. The terms Internet telephony, broadband telephony, and broadband phone service specifically refer to the provisioning of communications services (voice, fax, SMS, voice-messaging) over the public Internet, rather than via the public switched telephone network (PSTN).
3. Google Meet application support code and bitrate are listed in section 9, and the customized Google Meet software is installed on a mobile phone that is used as the Auxiliary for the test. The software enables the audio coding rate to be changed, and reports the input digital audio level before audio processing, which can be used to calibrate the input audio level.
4. This device comes with the preinstalled OTT application that supports the voice-only communication option on the Google Meet application and related codec. The test configuration establishes a call between the device under test and an auxiliary handset via Google Meet server.
5. The test setup used for Google Meet OTT voice-only communication is via the data application unit on the simulate base station, connected to the internet via the Google Meet server to the auxiliary device. The auxiliary device runs special software that allows the codecs and bit rate to be fixed to a specific value. Please refer to section 9. An assessment was made of each of the different codec bit rates to determine the worst case for each different OTT transport (WiFi, LTE, GSM, WCDMA, NR).
6. The auxiliary device includes software that displays the audio level in dBFS, which allows calibration of the system to establish the -20dBm0 reference level. After establishing the voice-only communication between auxiliary device and device under test, the audio output from the AMMI is injected into the auxiliary device. The gain factor to establish a reference level of -20dBm0 for use during the test is determined as detailed in the next page based on the 0dBFull Scale (0dBFS) value being equivalent to 3.14dBm0.





**<Define the input level for OTT Voice Calling>**

1. The Required gain factor for the specific signal shall typically be multiplied by this factor to achieve approx. the same level as for the 1kHz sine signal
2. The below calculation formula is an example and showing how to determine the input level for the device.
3. Input a gain value to readout the -23dBFS level as reference. (0dBFS = 3.14 dBm0)
4. Adjust gain level until to readout the dBFS level until it changes to -24dBFS.
5. Based on the step 1 and 2, and then calculate the gain value(dB) by interpolation to get the -20dBm0 corresponding gain value.

The predefined signal types have the following differences / factors compared to the 1kHz sine signal:

Signal [file name]	Duration [s]	Peak-to-RMS [dB]	RMS [dB]	Required gain factor *)	Gain setting
1kHz sine	---	3.0	0.0	1.00	
48k_1.025kHz_10s.wav	10	3.0	0.0	1.00	
48k_1kHz_3.15kHz_10s.wav	10	6.0	-3.0	1.42	
48k_315Hz_1kHz_10s.wav	10	6.0	-2.9	1.40	
48k_csek_8k_441_white_10s.wav	10	13.8	-10.5	3.34	
48k_multisine_50-5000_10s.wav	10	11.1	-7.9	2.49	
48k_voice_1kHz_1s.wav	1	16.2	-12.7	4.33	
48k_voice_300-3000_2s.wav	2	21.6	-18.6	8.48	

(\*) The gain for the specific signal shall typically be multiplied by this factor to acheive approx. the same level as for the 1kHz sine signal.

Insert the gain applicable for your setup in the last column of the table.

Step	Signal type	Audio out		Target Level		
		Gain value	Gain value (dB)	dBFS	dBm0	
Step 1	1KHz Sine	7.7	17.73 (Ref.)	-23		
Step 2	1KHz Sine	6.8	16.65	-24		
Step 3	1KHz Sine	7.57**	17.58*	-23.14	-20	
Remark	(*) Based on the step 1 and 2 and then via interpolation to get this value. (**) Gain value=10^Gain value(dB)/20					
	Signal type	Duration (s)	Peak to RMS (dB)	RMS (dB)	Gain Factor	Gain value
	1kHz sine		3	0	1	7.57
	48k_voice_1kHz_1s.wav	1	16.2	-12.7	4.33	32.77
	48k_voice_300-3000_2s.wav	2	21.6	-18.6	8.48	64.79
1. According to the gain setting for 1kHz sine wave, determine the gain setting for signals above. 2. The gain for the specific signal is multiplied by this factor to achieve the same level as for the 1kHz sine signal.						



**7. Test Equipment List**

Manufacturer	Name of Equipment	Type/Model	Serial Number	Calibration	
				Last Cal.	Due Date
SPEAG	Audio Magnetic 1D Field Probe	AM1DV3	3104	Mar. 16, 2023	Mar. 15, 2024
SPEAG	Data Acquisition Electronics	DAE3	577	Sep. 14, 2023	Sep. 13, 2024
SPEAG	Data Acquisition Electronics	DAE4ip	1823	Jul. 31, 2023	Jul. 30, 2024
SPEAG	Audio Magnetic Calibration Coil	AMCC	1049	NCR	NCR
SPEAG	Audio Measuring Instrument	AMMI	1041	NCR	NCR
Testo	Hygro meter	608-H1	45196600	Nov. 02, 2023	Nov. 01, 2024
R&S	Wideband Radio Communication Tester	CMW500	115793	Nov. 20, 2023	Nov. 19, 2024
R&S	Wideband Radio Communication Tester	CMX500	101931	Sep. 12, 2023	Sep. 11, 2024
SPEAG	Test Arch Phantom	N/A	N/A	NCR	NCR
SPEAG	Phone Positioner	N/A	N/A	NCR	NCR

**Note:**

- 1. NCR: "No-Calibration Required"





**8. T-Coil testing for CMRS Voice**

**General Note:**

1. The device support close mode and open mode user scenarios during voice calling, all the test was done on close mode scenario, open mode scenario will spot check worst case air interface found in close mode.
2. Phone Condition: Mute on; Backlight off; Max Volume
3. Codec Investigation: For a voice service/air interface, investigate the variations of codec configurations (WB, NB bit rate) and document the parameters (ABM1, ABM2, S+N/N, frequency response) for that voice service. It is only necessary to document this for one channel/band, the following worst investigation codec would be remarked to be used for the testing for the handset.
4. Air Interface Investigation:
  - a. Through Internal radio configuration investigation (e.g. bandwidth, modulation data rate, subcarrier spacing, and resource blocks) that the worst radio configuration was document as below table.
  - b. Use the worst-case codec test and document a limited set of bands/channel/bandwidths.
  - c. According to the ANSI C63.19-2019 section 6.3.3, using a frequency near the center of the frequency band perform T-coil evaluation.

**8.1 GSM Evaluation Results**

**<Codec Investigation>**

Codec Bit rate	AMR NB Full Rate 4.75 Kbps	AMR NB Full Rate 12.2 Kbps	AMR WB Full Rate 6.6 Kbps	AMR WB Full Rate 12.65 Kbps	EFR NB (FR V2) 12.2Kbps	Orientation	Band / Channel
Primary Group Contiguous Point Count	57	66	53	62	65	Transversal (Y)	GSM850 / GSM Voice / 189
Secondary Group Contiguous Point Count	225	249	241	238	245		
Secondary Group Max Longitudinal	21	21	21	21	21		
Secondary Group Max Transverse	26	26	26	26	26		
Frequency Response	Pass	Pass	Pass	Pass	Pass		

**<Air Interface Results>**

Plot No.	Air Interface	Mode	Worst Case Codec	Channel	DUT Status	Probe Position	Primary Group Contiguous Point Count	Secondary Group Contiguous Point Count	Secondary Group Max Longitudinal	Secondary Group Max Transverse	Frequency Response Margin (dB)	Ambient Noise dB (A/m)
01	GSM850	Voice	AMR WB Full Rate 6.6 Kbps	189	Close	Transversal (Y)	30	172	18	23	1.64	-50.28
04	GSM1900	Voice	AMR WB Full Rate 6.6 Kbps	661	Close	Transversal (Y)	82	250	24	26	0.94	-50.23
05	GSM850	Voice	AMR WB Full Rate 6.6 Kbps	189	Open	Transversal (Y)	120	355	22	26	1.48	-50.25



**8.2 UMTS Evaluation Results**

**<Codec Investigation>**

Codec	NB AMR 4.75Kbps	WB AMR 6.60Kbps	NB AMR 12.2Kbps	WB AMR 23.85Kbps	Orientation	Band / BW / Channel
Primary Group Contiguous Point Count	267	257	278	268	Transversal (Y)	B5 / AMR12.2Kbps / 4182
Secondary Group Contiguous Point Count	515	515	523	514		
Secondary Group Max Longitudinal	26	26	26	26		
Secondary Group Max Transverse	26	26	26	26		
Frequency Response	Pass	Pass	Pass	Pass		

**<Air Interface Results>**

Plot No.	Air Interface	Mode	Worst Case Codec	Channel	DUT Status	Probe Position	Primary Group Contiguous Point Count	Secondary Group Contiguous Point Count	Secondary Group Max Longitudinal	Secondary Group Max Transverse	Frequency Response Margin (dB)	Ambient Noise dB (A/m)
06	WCDMA II	Voice	WB AMR 6.60Kbps	9400	Close	Transversal (Y)	268	532	26	26	1.58	-50.23
07	WCDMA IV	Voice	WB AMR 6.60Kbps	1413	Close	Transversal (Y)	241	494	26	26	1.99	-50.25
08	WCDMA V	Voice	WB AMR 6.60Kbps	4182	Close	Transversal (Y)	257	515	26	26	2	-50.29
09	WCDMA IV	Voice	WB AMR 6.60Kbps	1413	Open	Transversal (Y)	354	662	26	26	1.07	-50.27



**8.3 VoLTE Evaluation Results**

**<Codec Investigation>**

**LTE FDD**

Codec	NB AMR 4.75Kbps	WB AMR 6.60Kbps	NB AMR 12.2Kbps	WB AMR 23.85Kbps	EVS SWB 9.6Kbps	EVS SWB 24.4Kbps	EVS WB 5.9Kbps	EVS WB 24.4Kbps	EVS NB 5.9Kbps	EVS NB 24.4Kbps	Orientation	Band / BW / Channel
Primary Group Contiguous Point Count	233	260	273	272	269	265	204	274	248	272	Transversal (Y)	B25 / 20M_QPSK_1_0 / 26340
Secondary Group Contiguous Point Count	517	519	520	516	507	506	508	509	513	511		
Secondary Group Max Longitudinal	26	26	26	26	26	26	26	26	26	26		
Secondary Group Max Transverse	26	26	26	26	26	26	26	26	26	26		
Frequency Response	Pass	Pass	Pass	Pass	Pass	Pass	Pass	Pass	Pass	Pass		

**LTE TDD**

Codec	NB AMR 4.75Kbps	WB AMR 6.60Kbps	NB AMR 12.2Kbps	WB AMR 23.85Kbps	EVS SWB 9.6Kbps	EVS SWB 24.4Kbps	EVS WB 5.9Kbps	EVS WB 24.4Kbps	EVS NB 5.9Kbps	EVS NB 24.4Kbps	Orientation	Band / BW / Channel
Primary Group Contiguous Point Count	164	148	163	179	189	184	148	175	174	200	Transversal (Y)	B41 / 20M_QPSK_1_0 / 40620
Secondary Group Contiguous Point Count	403	400	399	410	422	421	420	409	422	433		
Secondary Group Max Longitudinal	26	26	26	26	26	26	26	26	26	26		
Secondary Group Max Transverse	26	26	26	26	26	26	26	26	26	26		
Frequency Response	Pass	Pass	Pass	Pass	Pass	Pass	Pass	Pass	Pass	Pass		

**<Air Interface Results>**

Plot No.	Air Interface	BW (MHz)	Modulation	RB Size	RB offset	Worst Case Codec	Channel	DUT Status	Probe Position	Primary Group Contiguous Point Count	Secondary Group Contiguous Point Count	Secondary Group Max Longitudinal	Secondary Group Max Transverse	Frequency Response Margin (dB)	Ambient Noise dB (A/m)
10	LTE Band 7	20M	QPSK	1	0	EVS WB 5.9Kbps	21100	Close	Transversal (Y)	201	504	26	26	1.49	-50.22
11	LTE Band 12	10M	QPSK	1	0	EVS WB 5.9Kbps	23095	Close	Transversal (Y)	210	520	26	26	2	-50.26
12	LTE Band 13	10M	QPSK	1	0	EVS WB 5.9Kbps	23230	Close	Transversal (Y)	201	508	26	26	1.39	-50.26
13	LTE Band 14	10M	QPSK	1	0	EVS WB 5.9Kbps	23330	Close	Transversal (Y)	209	509	26	26	1.75	-50.23
14	LTE Band 25	20M	QPSK	1	0	EVS WB 5.9Kbps	26340	Close	Transversal (Y)	204	508	26	26	2	-50.24
15	LTE Band 26	15M	QPSK	1	0	EVS WB 5.9Kbps	26865	Close	Transversal (Y)	216	506	26	26	2	-50.25
16	LTE Band 30	10M	QPSK	1	0	EVS WB 5.9Kbps	27710	Close	Transversal (Y)	212	514	26	26	1.85	-50.24
17	LTE Band 41	20M	QPSK	1	0	EVS WB 5.9Kbps	40620	Close	Transversal (Y)	148	420	26	26	2	-50.24
18	LTE Band 48	20M	QPSK	1	0	EVS WB 5.9Kbps	55830	Close	Transversal (Y)	112	365	26	26	1.8	-50.26
19	LTE Band 66	20M	QPSK	1	0	EVS WB 5.9Kbps	132322	Close	Transversal (Y)	233	531	26	26	2	-50.22
20	LTE Band 71	20M	QPSK	1	0	EVS WB 5.9Kbps	133297	Close	Transversal (Y)	197	519	26	26	2	-50.21
21	LTE Band 71	20M	QPSK	1	0	EVS WB 5.9Kbps	133297	Open	Transversal (Y)	275	613	26	26	1.73	-50.28
22	LTE Band 48	20M	QPSK	1	0	EVS WB 5.9Kbps	55830	Open	Transversal (Y)	182	504	26	26	1.77	-50.23



### 8.4 VoNR Evaluation Results

#### <Codec Investigation>

##### 5G NR FDD

Codec	NB AMR 4.75Kbps	WB AMR 6.60Kbps	NB AMR 12.2Kbps	WB AMR 23.85Kbps	EVS SWB 9.6Kbps	EVS SWB 24.4Kbps	EVS WB 5.9Kbps	EVS WB 24.4Kbps	EVS NB 5.9Kbps	EVS NB 24.4Kbps	Orientation	Band / BW / Channel
Primary Group Contiguous Point Count	274	259	269	272	265	269	220	273	226	269	Transversal (Y)	n25 / 40M_BPSK_1_1 / 376500
Secondary Group Contiguous Point Count	522	518	514	517	508	512	511	514	515	506		
Secondary Group Max Longitudinal	26	26	26	26	26	26	26	26	26	26		
Secondary Group Max Transverse	26	26	26	26	26	26	26	26	26	26		
Frequency Response	Pass	Pass	Pass	Pass	Pass	Pass	Pass	Pass	Pass	Pass		

##### 5G NR TDD

Codec	NB AMR 4.75Kbps	WB AMR 6.60Kbps	NB AMR 12.2Kbps	WB AMR 23.85Kbps	EVS SWB 9.6Kbps	EVS SWB 24.4Kbps	EVS WB 5.9Kbps	EVS WB 24.4Kbps	EVS NB 5.9Kbps	EVS NB 24.4Kbps	Orientation	Band / BW / Channel
Primary Group Contiguous Point Count	165	155	172	165	166	168	139	169	139	166	Transversal (Y)	n41 / 100M_BPSK_1_1 / 518598
Secondary Group Contiguous Point Count	406	404	410	404	396	401	401	401	400	399		
Secondary Group Max Longitudinal	24	26	26	26	26	26	26	26	26	26		
Secondary Group Max Transverse	26	26	26	26	26	26	26	26	26	26		
Frequency Response	Pass	Pass	Pass	Pass	Pass	Pass	Pass	Pass	Pass	Pass		

#### <Air Interface Results>

Plot No.	Air Interface	BW (MHz)	Modulation / Mode	RB Size	RB offset	Worst Case Codec	Channel	DUT Status	Probe Position	Primary Group Contiguous Point Count	Secondary Group Contiguous Point Count	Secondary Group Max Longitudinal	Secondary Group Max Transverse	Frequency Response Margin (dB)	Ambient Noise dB (A/m)
23	FR1 n7	50M	BPSK	1	1	EVS WB 5.9Kbps	507000	Close	Transversal (Y)	220	516	26	26	1.35	-50.25
24	FR1 n12	15M	BPSK	1	1	EVS WB 5.9Kbps	141500	Close	Transversal (Y)	247	540	26	26	1.29	-50.23
25	FR1 n14	10M	BPSK	1	1	EVS WB 5.9Kbps	158600	Close	Transversal (Y)	234	529	26	26	1.51	-50.22
26	FR1 n25	40M	BPSK	1	1	EVS WB 5.9Kbps	376500	Close	Transversal (Y)	220	511	26	26	0.96	-50.21
27	FR1 n26	20M	BPSK	1	1	EVS WB 5.9Kbps	166300	Close	Transversal (Y)	230	528	26	26	0.61	-50.21
28	FR1 n30	10M	BPSK	1	1	EVS WB 5.9Kbps	462000	Close	Transversal (Y)	230	522	26	26	0.74	-50.26
29	FR1 n41	100M	BPSK	1	1	EVS WB 5.9Kbps	518598	Close	Transversal (Y)	139	401	26	26	0.62	-50.24
66	FR1 n41 ULMIMO	100M	BPSK	1	1	EVS WB 5.9Kbps	518598	Close	Transversal (Y)	157	418	26	26	1.8	-50.24
30	FR1 n48	40M	BPSK	1	1	EVS WB 5.9Kbps	641666	Close	Transversal (Y)	128	382	26	26	1.45	-50.23
67	FR1 n48 ULMIMO	40M	BPSK	1	1	EVS WB 5.9Kbps	641666	Close	Transversal (Y)	174	437	26	26	2	-50.22
31	FR1 n66	40M	BPSK	1	1	EVS WB 5.9Kbps	349000	Close	Transversal (Y)	224	522	26	26	1.02	-50.26
32	FR1 n71	20M	BPSK	1	1	EVS WB 5.9Kbps	136100	Close	Transversal (Y)	230	523	26	26	0.86	-50.22
33	FR1 n77	100M	BPSK	1	1	EVS WB 5.9Kbps	656000	Close	Transversal (Y)	122	378	26	26	0.91	-50.27
68	FR1 n77 ULMIMO	100M	BPSK	1	1	EVS WB 5.9Kbps	656000	Close	Transversal (Y)	139	394	26	26	1.42	-50.34
34	FR1 n25	40M	BPSK	1	1	EVS WB 5.9Kbps	376500	Open	Transversal (Y)	330	659	26	26	1.54	-50.22
35	FR1 n77	100M	BPSK	1	1	EVS WB 5.9Kbps	656000	Open	Transversal (Y)	279	597	26	26	1.33	-50.29



**8.5 VoWiFi Evaluation Results**

**<Codec Investigation>**

Codec	NB AMR 4.75Kbps	WB AMR 6.60Kbps	NB AMR 12.2Kbps	WB AMR 23.85Kbps	EVS SWB 9.6Kbps	EVS SWB 24.4Kbps	EVS WB 5.9Kbps	EVS WB 24.4Kbps	EVS NB 5.9Kbps	EVS NB 24.4Kbps	Orientation	Band / BW / Channel
Primary Group Contiguous Point Count	354	324	369	344	347	350	261	336	320	312	Transversal (Y)	2.4GHz WLAN / 802.11g 6 Mbps / 6
Secondary Group Contiguous Point Count	657	631	663	634	633	634	627	615	610	570		
Secondary Group Max Longitudinal	26	26	26	26	26	26	26	26	26	26		
Secondary Group Max Transverse	26	26	26	26	26	26	26	26	26	26		
Frequency Response	Pass	Pass	Pass	Pass	Pass	Pass	Pass	Pass	Pass	Pass		

**<Air Interface Results>**

Plot No.	Air Interface	Modulation / Mode	Worst Case Codec	Channel	DUT Status	Probe Position	Primary Group Contiguous Point Count	Secondary Group Contiguous Point Count	Secondary Group Max Longitudinal	Secondary Group Max Transverse	Frequency Response Margin (dB)	Ambient Noise dB (A/m)
36	WLAN2.4GHz	802.11g 6Mbps	EVS WB 5.9Kbps	6	Close	Transversal (Y)	261	627	26	26	2	-50.23
37	WLAN2.4GHz	802.11g 6Mbps	EVS WB 5.9Kbps	6	Open	Transversal (Y)	301	673	26	26	2	-50.27
38	WLAN5GHz	802.11a 6Mbps	EVS WB 5.9Kbps	40	Close	Transversal (Y)	247	647	26	26	2	-50.26
39	WLAN5GHz	802.11a 6Mbps	EVS WB 5.9Kbps	60	Close	Transversal (Y)	237	622	26	26	2	-50.23
40	WLAN5GHz	802.11a 6Mbps	EVS WB 5.9Kbps	116	Close	Transversal (Y)	225	607	26	26	2	-50.28
41	WLAN5GHz	802.11a 6Mbps	EVS WB 5.9Kbps	157	Close	Transversal (Y)	237	587	26	26	2	-50.22
42	WLAN5GHz	802.11a 6Mbps	EVS WB 5.9Kbps	173	Close	Transversal (Y)	249	589	26	26	1.82	-50.21
43	WLAN6GHz	802.11ax-HE20	EVS WB 5.9Kbps	5	Close	Transversal (Y)	248	624	26	26	1.56	-50.23
44	WLAN5GHz	802.11a 6Mbps	EVS WB 5.9Kbps	116	Open	Transversal (Y)	317	673	26	26	1.48	-50.21



### 9. T-Coil testing for OTT Voice Calling

**General Notes:**

1. According to the ANSI C63.19-2019 section 6.3.3, using a frequency near the center of the frequency band perform T-coil evaluation.
2. Phone Condition: Mute on; Backlight off; Max Volume
3. The device supported a pre-installed application, Google Meet, whose features allow the option of voice-only communications. According to KDB 285076 D02, all air interfaces via a data connection with an application providing voice functionality need to be considered for HAC testing.
4. Google Meet only support OPUS audio codec and support 6Kbps to 75Kbps bitrate.
5. The test setup used for OTT Voice call is the DUT connect to the CMW500/CMX500 and via the data application unit on CMW500/CMX500 connection to the Internet, the Auxiliary EUT is connected to the WiFi access point, the channel/Modulation/Frequency bands/data rate is configured on the CMW500/CMX500 for the DUT unit. For the Auxiliary OTT unit which is used to configure the audio codec rate and determine the audio input level of -20dBm0 based on the KDB 285076 D02 requirement.
6. Codec Investigation: For a voice service/air interface, investigate the variations of codec configurations (WB, NB bit rate) and document the parameters (ABM1, ABM2, S+N/N, frequency response) for that voice service. It is only necessary to document this for one channel/band, the following tests results which the worst case codec would be remarked to be used for the testing for the handset.
7. Air Interface Investigation:
  - a. Through Internal radio configuration investigation (e.g. bandwidth, modulation data rate, subcarrier spacing, and resource blocks) that the worst radio configuration was document as below table.
  - b. Use the worst-case codec test and document a limited set of bands/channel/bandwidths.
  - c. OTT service and CMRS IP service are established over the internet protocol for the voice service, and on both services the identical RF air interface is used for LTE, WIFI and NR. Therefore, according to VoLTE, VoWiFi and VoNR test results from the air interface investigation, the worst configuration and frequency band of the air interface is used for OTT T-Coil testing.
    - LTE FDD worst configuration and band: LTE Band 71/20MHz/QPSK/1RB Size
    - LTE TDD worst configuration and band: LTE Band 48/20MHz/QPSK/1RB Size
    - NR FDD worst configuration and band: NR n25/40MHz/BPSK/1RB Size
    - NR TDD worst configuration and band: NR n77/100MHz/BPSK/1RB Size
    - WLAN DTS worst configuration: 802.11g/6Mbps
    - WLAN NII worst configuration and Band: WLAN 5.5GHz/11a/6Mbps

**<Codec Investigation>**

**EDGE**

Codec	Opus 6kbps	Opus 40kbps	Opus 75kbps	Orientation	Band / Channel
Primary Group Contiguous Point Count	75	101	105	Transversal (Y)	GSM850 / Voice / 189
Secondary Group Contiguous Point Count	292	323	328		
Secondary Group Max Longitudinal	21	26	26		
Secondary Group Max Transverse	26	26	26		
Frequency Response	Pass	Pass	Pass		



**HSPA**

Codec	Opus 6kbps	Opus 40kbps	Opus 75kbps	Orientation	Band / Channel
Primary Group Contiguous Point Count	306	316	312	Transversal (Y)	B5 / RMS12.2Kbps / 4182
Secondary Group Contiguous Point Count	566	570	566		
Secondary Group Max Longitudinal	26	26	26		
Secondary Group Max Transverse	26	26	26		
Frequency Response	Pass	Pass	Pass		

**LTE FDD**

Codec	Opus 6kbps	Opus 40kbps	Opus 75kbps	Orientation	Band / Channel
Primary Group Contiguous Point Count	306	331	329	Transversal (Y)	B71 / 20M_QPSK_1_0 / 133297
Secondary Group Contiguous Point Count	558	560	560		
Secondary Group Max Longitudinal	26	26	26		
Secondary Group Max Transverse	26	26	26		
Frequency Response	Pass	Pass	Pass		

**LTE TDD**

Codec	Opus 6kbps	Opus 40kbps	Opus 75kbps	Orientation	Band / Channel
Primary Group Contiguous Point Count	154	164	163	Transversal (Y)	B48 / 20M_QPSK_1_0 / 55830
Secondary Group Contiguous Point Count	383	386	383		
Secondary Group Max Longitudinal	25	26	25		
Secondary Group Max Transverse	26	26	26		
Frequency Response	Pass	Pass	Pass		



**WLAN**

Codec	Opus 6kbps	Opus 40kbps	Opus 75kbps	Orientation	Band / Channel
Primary Group Contiguous Point Count	393	389	399	Transversal (Y)	2.4GHz WLAN / 802.11g 6Mbps / 6
Secondary Group Contiguous Point Count	630	623	640		
Secondary Group Max Longitudinal	26	26	26		
Secondary Group Max Transverse	26	26	26		
Frequency Response	Pass	Pass	Pass		

**5G NR FDD**

Codec	Opus 6kbps	Opus 40kbps	Opus 75kbps	Orientation	Band / Channel
Primary Group Contiguous Point Count	295	292	296	Transversal (Y)	n25 / 40M_BPSK_1_1 / 376500
Secondary Group Contiguous Point Count	529	523	527		
Secondary Group Max Longitudinal	26	26	26		
Secondary Group Max Transverse	26	26	26		
Frequency Response	Pass	Pass	Pass		

**5G NR TDD**

Codec	Opus 6kbps	Opus 40kbps	Opus 75kbps	Orientation	Band / Channel
Primary Group Contiguous Point Count	352	366	352	Transversal (Y)	n77 / 100M_BPSK_1_1 / 656000
Secondary Group Contiguous Point Count	595	616	591		
Secondary Group Max Longitudinal	26	26	26		
Secondary Group Max Transverse	26	26	26		
Frequency Response	Pass	Pass	Pass		





<Air Interface Results>

Plot No.	Air Interface	Mode	Worst Case Codec	Channel	DUT Status	Probe Position	Primary Group Contiguous Point Count	Secondary Group Contiguous Point Count	Secondary Group Max Longitudinal	Secondary Group Max Transverse	Frequency Response Margin (dB)	Ambient Noise dB (A/m)
45	GSM850	EDGE 2 Tx slots	Opus 6kbps	189	Close	Transversal (Y)	75	292	21	26	0.71	-50.21
46	GSM1900	EDGE 2 Tx slots	Opus 6kbps	661	Close	Transversal (Y)	74	276	25	26	0.93	-50.23
49	GSM1900	EDGE 2 Tx slots	Opus 6kbps	661	Close	Transversal (Y)	306	624	26	26	1.19	-50.27
50	WCDMA II	HSPA	Opus 6kbps	9400	Close	Transversal (Y)	291	549	26	26	0.85	-50.27
51	WCDMA IV	HSPA	Opus 6kbps	1413	Close	Transversal (Y)	324	567	26	26	1.64	-50.24
52	WCDMA V	HSPA	Opus 6kbps	4182	Close	Transversal (Y)	306	566	26	26	0.66	-50.26
53	WCDMA II	HSPA	Opus 6kbps	9400	Open	Transversal (Y)	420	670	26	26	0.67	-50.28
54	LTE Band 71	20M_QPSK_1_0	Opus 6kbps	133297	Close	Transversal (Y)	306	558	26	26	1.02	-50.21
55	LTE Band 71	20M_QPSK_1_0	Opus 6kbps	133297	Open	Transversal (Y)	425	671	26	26	1.06	-50.24
56	LTE Band 48	20M_QPSK_1_0	Opus 6kbps	55830	Close	Transversal (Y)	154	383	25	26	1.51	-50.21
57	LTE Band 48	20M_QPSK_1_0	Opus 6kbps	55830	Open	Transversal (Y)	337	592	26	26	1.38	-50.25
58	FR1 n25	40M_BPSK_1_1	Opus 40kbps	376500	Close	Transversal (Y)	389	623	26	26	1.5	-50.23
59	FR1 n25	40M_BPSK_1_1	Opus 40kbps	376500	Open	Transversal (Y)	434	671	26	26	1.45	-50.25
60	FR1 n77	100M_BPSK_1_1	Opus 6kbps	656000	Close	Transversal (Y)	292	523	26	26	1.62	-50.25
61	FR1 n77	100M_BPSK_1_1	Opus 6kbps	656000	Open	Transversal (Y)	425	673	26	26	1.42	-50.28
62	WLAN2.4GHz	802.11g 6Mbps	Opus 40kbps	6	Close	Transversal (Y)	267	495	26	26	1.84	-50.26
63	WLAN2.4GHz	802.11g 6Mbps	Opus 40kbps	6	Open	Transversal (Y)	343	5821	26	26	1.02	-50.27
64	WLAN5GHz	802.11a 6Mbps	Opus 40kbps	116	Close	Transversal (Y)	243	490	26	26	1.28	-50.28
65	WLAN5GHz	802.11a 6Mbps	Opus 40kbps	116	Open	Transversal (Y)	425	660	26	26	1.4	-50.25

Test Engineer : Wilson Lin, White Huang, Willie Huang, Willy Yu and Charles Shen

Conformity:

The test results with all measurement uncertainty excluded are presented in accordance with the regulation limits or requirements declared by manufacturers.

Disclaimer:

The declared of product specification for EUT presented in the report are provided by the manufacturer, and the manufacturer takes all the responsibilities for the accuracy of product specification.

## 10. Uncertainty Assessment

The evaluation of uncertainty by the statistical analysis of a series of observations is termed a Type A evaluation of uncertainty. The evaluation of uncertainty by means other than the statistical analysis of a series of observation is termed a Type B evaluation of uncertainty. Each component of uncertainty, however evaluated, is represented by an estimated standard deviation, termed standard uncertainty, which is determined by the positive square root of the estimated variance. The combined standard uncertainty of the measurement result represents the estimated standard deviation of the result. It is obtained by combining the individual standard uncertainties of both Type A and Type B evaluation using the usual “root-sum-squares” (RSS) methods of combining standard deviations by taking the positive square root of the estimated variances. Expanded uncertainty is a measure of uncertainty that defines an interval about the measurement result within which the measured value is confidently believed to lie. It is obtained by multiplying the combined standard uncertainty by a coverage factor. For purpose of this document, a coverage factor two is used, which corresponds to confidence interval of about 95 %. The DASy uncertainty Budget is showed in Table 8.2.

The judgment of conformity in the report is based on the measurement results excluding the measurement uncertainty.

Error Description	Uncertainty Value (±%)	Probability Distribution	Divisor	Ci (ABM1)	Ci (ABM2)	Standard Uncertainty (ABM1)	Standard Uncertainty (ABM2)
<b>Probe Sensitivity</b>							
Reference Level	3.0	Normal	1	1	1	± 3.0 %	± 3.0 %
AMCC Geometry	0.4	Rectangular	√3	1	1	± 0.2 %	± 0.2 %
AMCC Current	1.0	Rectangular	√3	1	1	± 0.6 %	± 0.6 %
Probe Positioning During Calibrate	0.1	Rectangular	√3	1	1	± 0.1 %	± 0.1 %
Noise Contribution	0.7	Rectangular	√3	0.0143	1	± 0.0 %	± 0.4 %
Frequency Slope	5.9	Rectangular	√3	0.1	1	± 0.3 %	± 3.5 %
<b>Probe System</b>							
Repeatability / Drift	1.0	Rectangular	√3	1	1	± 0.6 %	± 0.6 %
Linearity / Dynamic Range	0.6	Rectangular	√3	1	1	± 0.4 %	± 0.4 %
Acoustic Noise	1.0	Rectangular	√3	0.1	1	± 0.1 %	± 0.6 %
Probe Angle	2.3	Rectangular	√3	1	1	± 1.4 %	± 1.4 %
Spectral Processing	0.9	Rectangular	√3	1	1	± 0.5 %	± 0.5 %
Integration Time	0.6	Normal	1	1	5	± 0.6 %	± 3.0 %
Field Disturbation	0.2	Rectangular	√3	1	1	± 0.1 %	± 0.1 %
<b>Test Signal</b>							
Reference Signal Spectral Response	0.6	Rectangular	√3	0	1	± 0.0 %	± 0.4 %
<b>Positioning</b>							
Probe Positioning	1.9	Rectangular	√3	1	1	± 1.1 %	± 1.1 %
Phantom Thickness	0.9	Rectangular	√3	1	1	± 0.5 %	± 0.5 %
EUT Positioning	1.9	Rectangular	√3	1	1	± 1.1 %	± 1.1 %
<b>External Contributions</b>							
RF Interference	0.0	Rectangular	√3	1	0.3	± 0.0 %	± 0.0 %
Test Signal Variation	2.0	Rectangular	√3	1	1	± 1.2 %	± 1.2 %
Combined Standard Uncertainty						± 4.1 %	± 6.1 %
Coverage Factor for 95 %						K = 2	
Expanded Uncertainty						± 8.1 %	± 12.3 %
Declaration of Conformity: The test results with all measurement uncertainty excluded are presented in accordance with the regulation limits or requirements declared by manufacturers.							
Comments and Explanations: The declared of product specification for EUT presented in the report are provided by the manufacturer, and the manufacturer takes all the responsibilities for the accuracy of product specification.							

### Uncertainty Budget of audio band magnetic measurement



## **11. References**

- [1] ANSI C63.19-2019, "American National Standard for Methods of Measurement of Compatibility between Wireless Communications Devices and Hearing Aids", Aug. 2019.
- [2] FCC KDB 285076 D01v06r04, "Equipment Authorization Guidance for Hearing Aid Compatibility", Sep. 2023.
- [3] FCC KDB 285076 D02v04, "Guidance for performing T-Coil tests for air interfaces supporting voice over IP (e.g., LTE and WiFi) to support CMRS based telephone services", Feb 2022
- [4] FCC KDB 285076 D03v01r06, "Hearing aid compatibility frequently asked questions", Jul. 2022
- [5] SPEAG DASY System Handbook