

System Check_Head_2450MHz

DUT: D2450V2 - SN736

Communication System: CW; Frequency: 2450.000 MHz

Medium: HSL_2450_230321 Medium parameters used: $f = 2450.000$ MHz; $\sigma = 1.79$ S/m; $\epsilon_r = 38.9$

Ambient Temperature: 23.5°C; Liquid Temperature: 22.5°C

DASY6 Configuration:

- Probe: EX3DV4 - SN7793; ConvF(6.63, 6.87, 6.92); Calibrated: 2024-03-01
- Sensor-Surface: 1.4 mm
- Electronics: DAE4 Sn1707; Calibrated: 2023-12-06
- Phantom: Twin-SAM V8.0 (30deg probe tilt); Serial: 2079_For Gap; Section: Flat
- Measurement Software: 16.2.4.2524
- UID: CW, 0--

Pin=16.8dBm/Area Scan (40.0 mm x 80.0 mm): Measurement Grid: 10.0 mm x 10.0 mm

SAR (1g) = 2.33 W/kg; SAR (10g) = 1.12 W/kg;

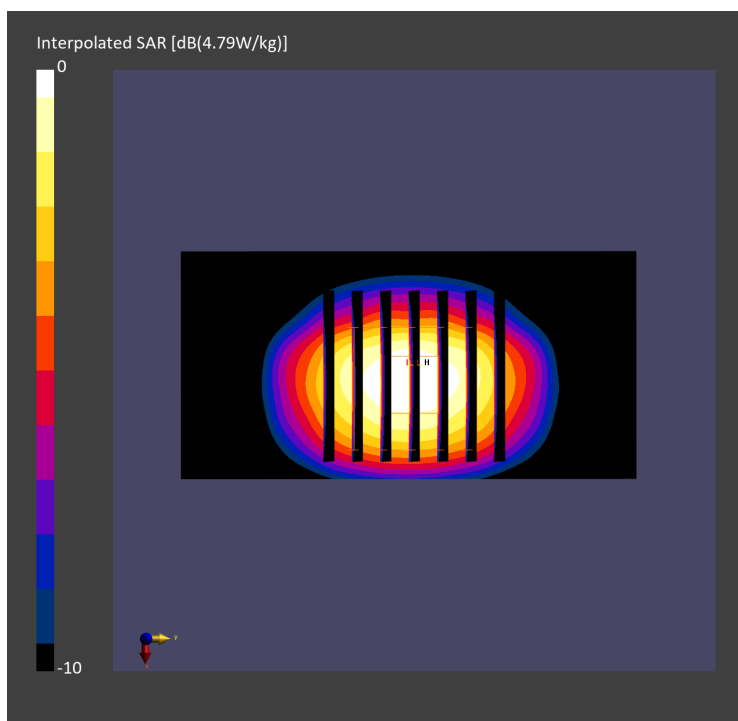
Pin=16.8dBm/Zoom Scan (30.0 mm x 30.0 mm x 30.0 mm): Measurement Grid: 5.0 mm x 5.0 mm x 1.5 mm

Power Drift = -0.00 dB

SAR (1g) = 2.41 W/kg; SAR (8g) = 1.25 W/kg; SAR (10g) = 1.13 W/kg

Smallest distance from peaks to all points 3 dB below = 9.0 mm

Ratio of SAR at M2 to SAR at M1 = 81.9 %



System Check_Head_5250MHz

DUT: D5GHzV2 - SN1171

Communication System: CW; Frequency: 5250.000 MHz

Medium: HSL_5G_240321 Medium parameters used: $f = 5250.000$ MHz; $\sigma = 4.70$ S/m; $\epsilon_r = 36.7$

Ambient Temperature: 23.5°C; Liquid Temperature: 22.5°C

DASY6 Configuration:

- Probe: EX3DV4 - SN7793; ConvF(4.89, 5.03, 5.05); Calibrated: 2024-03-01
- Sensor-Surface: 1.4 mm
- Electronics: DAE4 Sn1707; Calibrated: 2023-12-06
- Phantom: Twin-SAM V8.0 (30deg probe tilt); Serial: 2079; Section: Flat
- Measurement Software: 16.2.4.2524
- UID: CW, 0--

Pin=20.0dBm/Area Scan (40.0 mm x 80.0 mm): Measurement Grid: 10.0 mm x 10.0 mm

SAR (1g) = 7.47 W/kg; SAR (10g) = 2.16 W/kg;

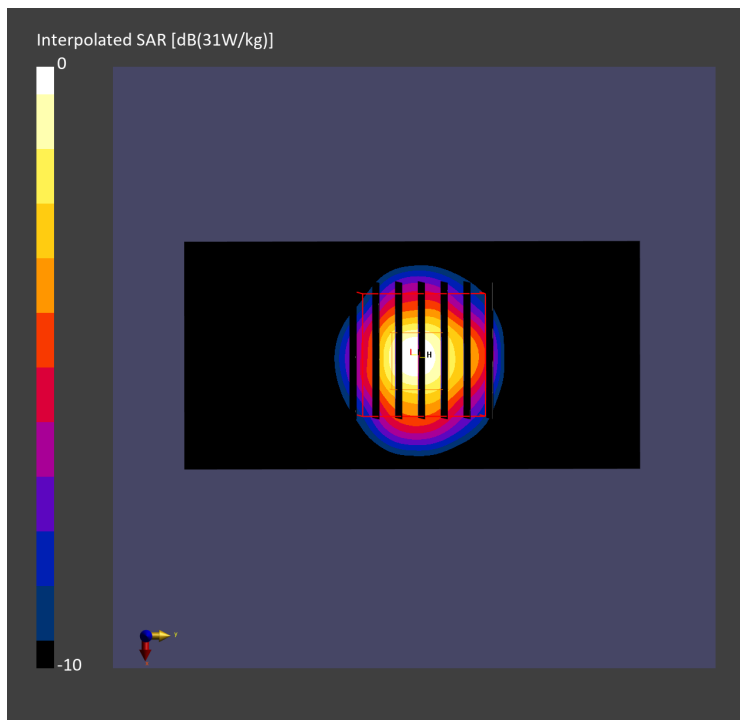
Pin=20.0dBm/Zoom Scan (22.0 mm x 22.0 mm x 22.0 mm): Measurement Grid: 4.0 mm x 4.0 mm x 1.4 mm

Power Drift = 0.01 dB

SAR (1g) = 8.13 W/kg; SAR (8g) = 2.72 W/kg; SAR (10g) = 2.33 W/kg

Smallest distance from peaks to all points 3 dB below = 7.4 mm

Ratio of SAR at M2 to SAR at M1 = 64.4 %



System Check_Head_5600MHz

DUT: D5GHzV2 - SN1171

Communication System: CW; Frequency: 5600.000 MHz

Medium: HSL_5G_240321 Medium parameters used: $f = 5600.000$ MHz; $\sigma = 5.07$ S/m; $\epsilon_r = 36.1$

Ambient Temperature: 23.5°C; Liquid Temperature: 22.5°C

DASY6 Configuration:

- Probe: EX3DV4 - SN7793; ConvF(4.12, 4.35, 4.32); Calibrated: 2024-03-01
- Sensor-Surface: 1.4 mm
- Electronics: DAE4 Sn1707; Calibrated: 2023-12-06
- Phantom: Twin-SAM V8.0 (30deg probe tilt); Serial: 2079; Section: Flat
- Measurement Software: 16.2.4.2524
- UID: CW, 0--

Pin=20.0dBm/Area Scan (40.0 mm x 80.0 mm): Measurement Grid: 10.0 mm x 10.0 mm

SAR (1g) = 8.59 W/kg; SAR (10g) = 2.44 W/kg;

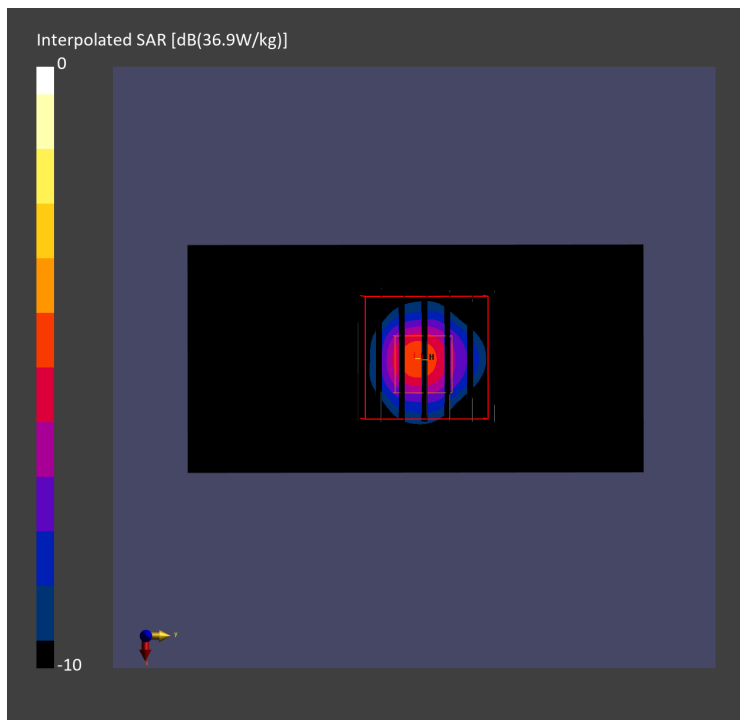
Pin=20.0dBm/Zoom Scan (22.0 mm x 22.0 mm x 22.0 mm): Measurement Grid: 4.0 mm x 4.0 mm x 1.4 mm

Power Drift = 0.01 dB

SAR (1g) = 9.16 W/kg; SAR (8g) = 3.02 W/kg; SAR (10g) = 2.59 W/kg

Smallest distance from peaks to all points 3 dB below = 7.4 mm

Ratio of SAR at M2 to SAR at M1 = 62.8 %



System Check_Head_5750MHz

DUT: D5GHzV2 - SN1171

Communication System: CW; Frequency: 5750.000 MHz

Medium: HSL_5G_240321 Medium parameters used: $f = 5750.000$ MHz; $\sigma = 5.24$ S/m; $\epsilon_r = 36.0$

Ambient Temperature: 23.5°C; Liquid Temperature: 22.5°C

DASY6 Configuration:

- Probe: EX3DV4 - SN7793; ConvF(4.37, 4.42, 4.46); Calibrated: 2024-03-01
- Sensor-Surface: 1.4 mm
- Electronics: DAE4 Sn1707; Calibrated: 2023-12-06
- Phantom: Twin-SAM V8.0 (30deg probe tilt); Serial: 2079; Section: Flat
- Measurement Software: 16.2.4.2524
- UID: CW, 0--

Pin=20.0dBm/Area Scan (40.0 mm x 80.0 mm): Measurement Grid: 10.0 mm x 10.0 mm

SAR (1g) = 7.18 W/kg; SAR (10g) = 2.05 W/kg;

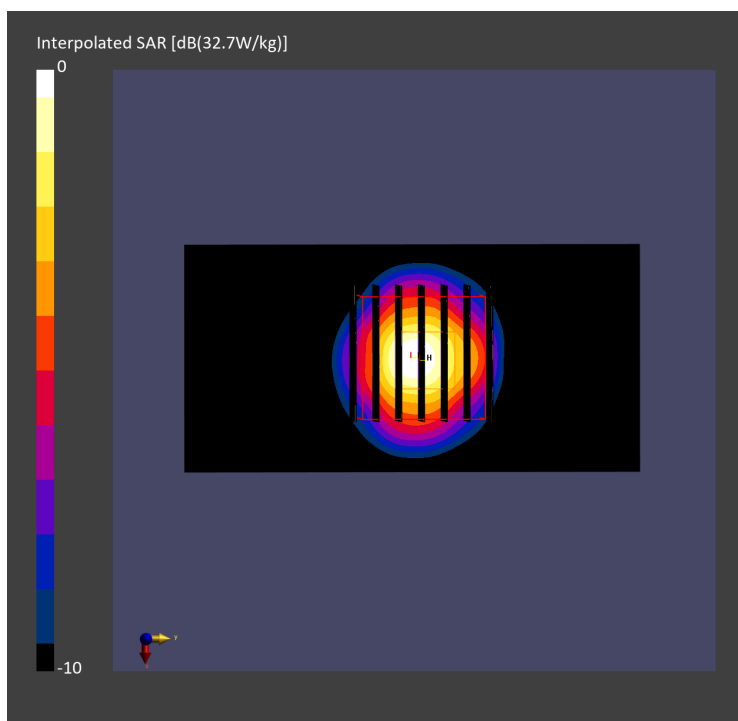
Pin=20.0dBm/Zoom Scan (22.0 mm x 22.0 mm x 22.0 mm): Measurement Grid: 4.0 mm x 4.0 mm x 1.4 mm

Power Drift = 0.03 dB

SAR (1g) = 7.80 W/kg; SAR (8g) = 2.60 W/kg; SAR (10g) = 2.23 W/kg

Smallest distance from peaks to all points 3 dB below = 7.6 mm

Ratio of SAR at M2 to SAR at M1 = 60.9 %



System Check_Head_5800MHz

DUT: D5GHzV2 - SN1171

Communication System: CW; Frequency: 5800.000 MHz

Medium: HSL_5G_240321 Medium parameters used: $f = 5800.000$ MHz; $\sigma = 5.29$ S/m; $\epsilon_r = 35.9$

Ambient Temperature: 23.5°C; Liquid Temperature: 22.5°C

DASY6 Configuration:

- Probe: EX3DV4 - SN7793; ConvF(4.37, 4.42, 4.46); Calibrated: 2024-03-01
- Sensor-Surface: 1.4 mm
- Electronics: DAE4 Sn1707; Calibrated: 2023-12-06
- Phantom: Twin-SAM V8.0 (30deg probe tilt); Serial: 2079; Section: Flat
- Measurement Software: 16.2.4.2524
- UID: CW, 0--

Pin=20.0dBm/Area Scan (40.0 mm x 80.0 mm): Measurement Grid: 10.0 mm x 10.0 mm

SAR (1g) = 7.46 W/kg; SAR (10g) = 2.22 W/kg;

Pin=20.0dBm/Zoom Scan (22.0 mm x 22.0 mm x 22.0 mm): Measurement Grid: 4.0 mm x 4.0 mm x 1.4 mm

Power Drift = 0.01 dB

SAR (1g) = 8.45 W/kg; SAR (8g) = 2.79 W/kg; SAR (10g) = 2.38 W/kg

Smallest distance from peaks to all points 3 dB below = 7.4 mm

Ratio of SAR at M2 to SAR at M1 = 59.6 %

