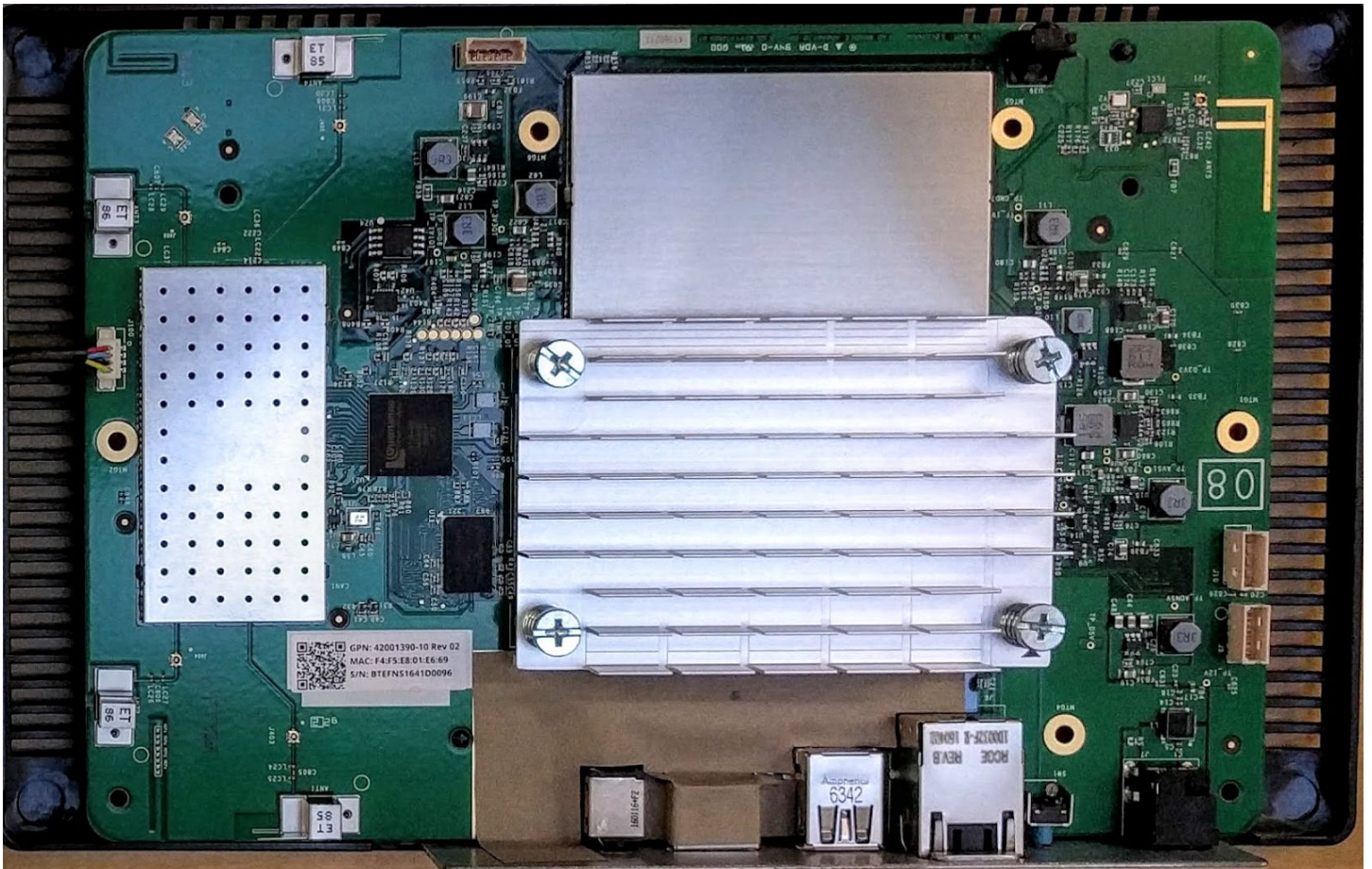


Top Cover Removed

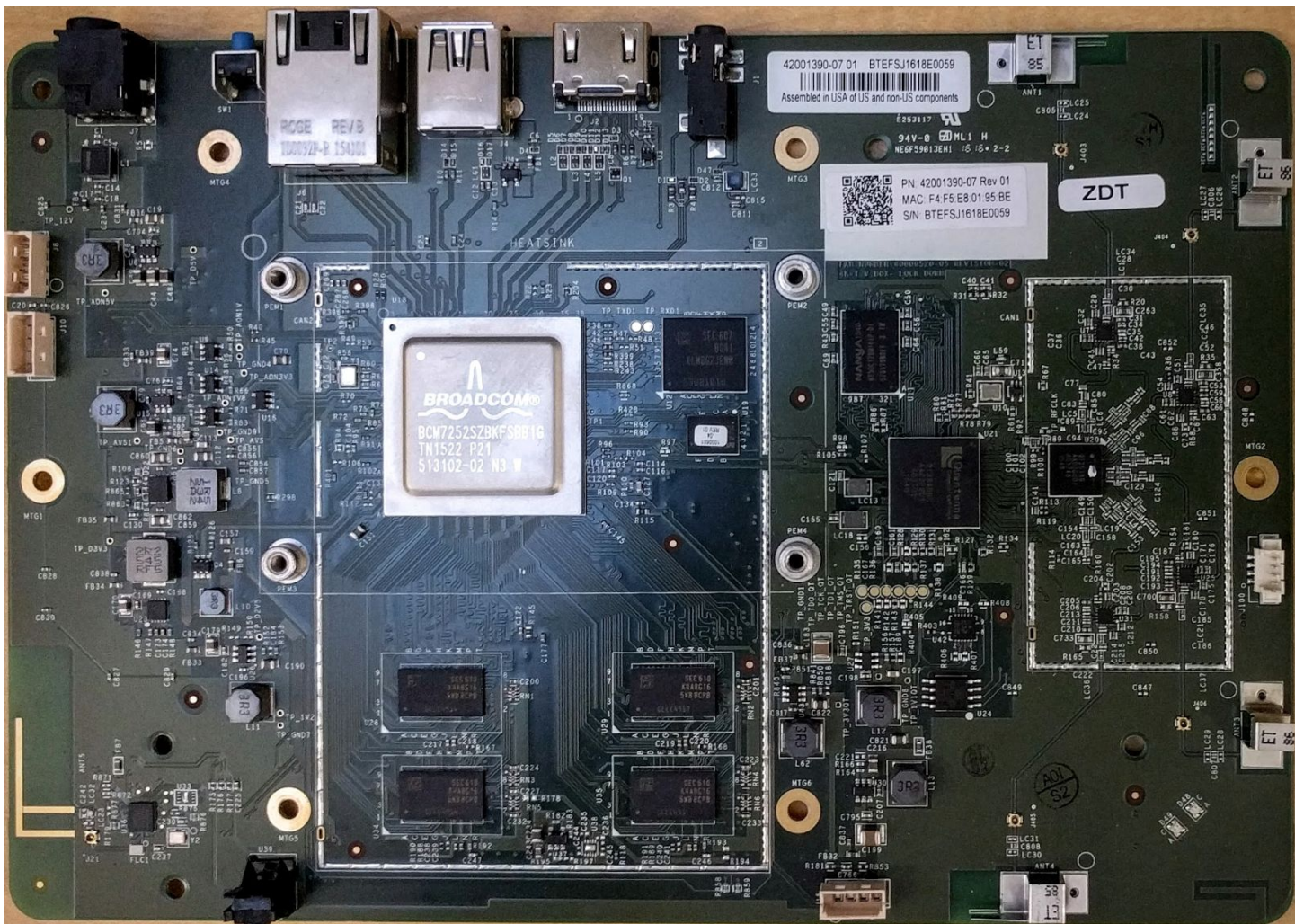


Zoom In to the PCB Assembly





The image shows the internal components of a ZTE Z970 tablet. The central focus is the Broadcom BCM7252S2ZKFSB01G modem, which is a white square component with the Broadcom logo and text. Below it, there are four black rectangular components, likely memory modules, arranged in a 2x2 grid. The motherboard is a green printed circuit board (PCB) with various electronic components, including capacitors, resistors, and integrated circuits. A large black heat sink is visible on the left side of the board. The top of the board features a USB port and a micro-USB port. The bottom of the board has a large black component, likely the battery or a connector. The overall layout is compact and efficient, typical of a tablet's internal design.





PCB Assembly with Shielding and Heat-sink Removed (Bottom View)

