

#110_WLAN5GHz_802.11ac-VHT80 MCS0_Left Side_0mm_Ch122;Ant 4+3

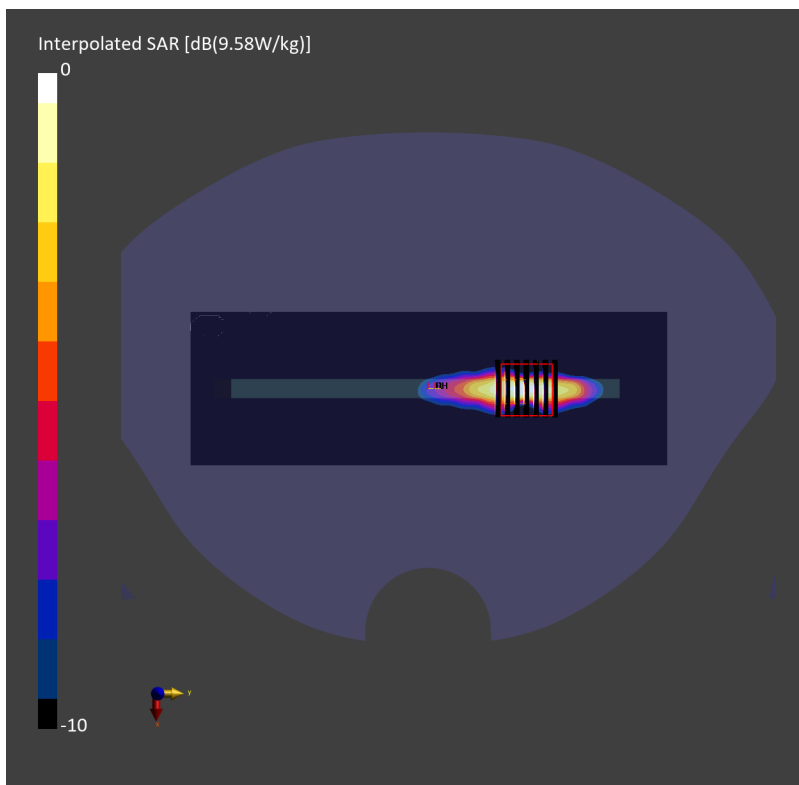
Communication System: 802.11ac; Frequency: 5610.000 MHz; Duty Cycle: 1:1.169
Medium: HSL_5G_230611 Medium parameters used: $f = 5610.000$ MHz; $\sigma = 5.14$ S/m; $\epsilon_r = 36.4$
Ambient Temperature: 23.7°C; Liquid Temperature: 22.7°C

DASY6 Configuration:

- Probe: EX3DV4 - SN7306; ConvF(4.66, 4.66, 4.66); Calibrated: 2022-07-28
- Sensor-Surface: 1.4 mm
- Electronics: DAE4 Sn1694; Calibrated: 2022-11-18
- Phantom: Twin-SAM V8.0 (30deg probe tilt); Serial: 2055; Section: Flat
- Measurement Software: 16.2.4.2524
- UID: WLAN, 10544-AAD

Area Scan (64.0 mm x 200.0 mm): Measurement Grid: 8.0 mm x 10.0 mm
SAR (1g) = 5.47 W/kg; SAR (10g) = 1.48 W/kg;

Zoom Scan (24.0 mm x 24.0 mm x 22.0 mm): Measurement Grid: 4.0 mm x 4.0 mm x 1.4 mm
Power Drift = 0.01 dB
SAR (1g) = 5.77 W/kg; SAR (8g) = 1.75 W/kg; SAR (10g) = 1.52 W/kg
Smallest distance from peaks to all points 3 dB below = 4.0 mm
Ratio of SAR at M2 to SAR at M1 = 62.3 %



#111_WLAN5GHz_802.11ac-VHT160 MCS0_Right Side_0mm_Ch163;Ant 4+3

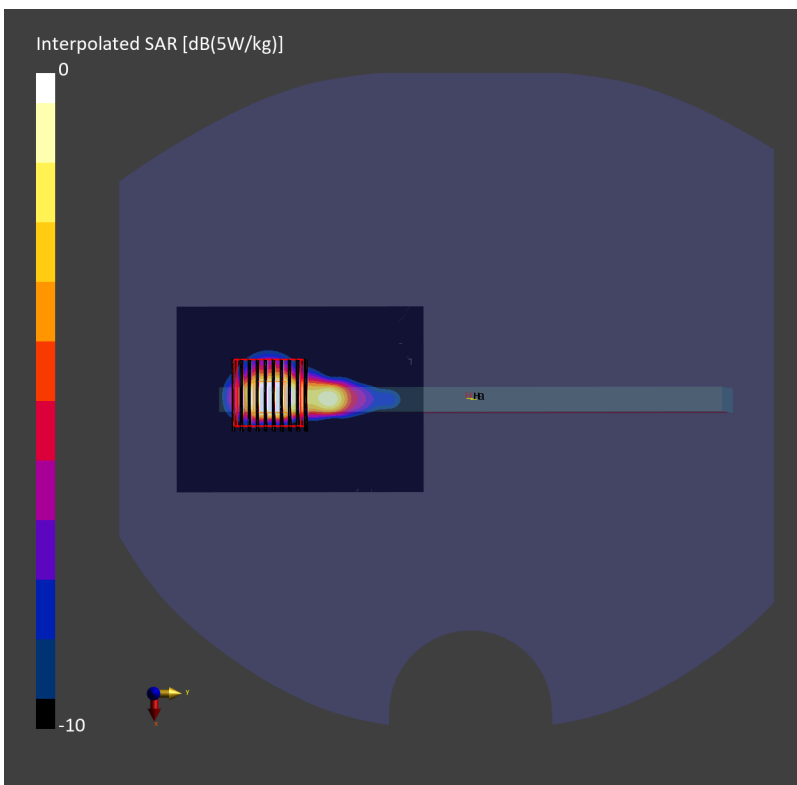
Communication System: 802.11ac; Frequency: 5815.000 MHz; Duty Cycle: 1:1.137
Medium: HSL_5G_230611 Medium parameters used: $f=5815.000$ MHz; $\sigma=5.36$ S/m; $\epsilon_r=36.2$
Ambient Temperature: 23.7°C; Liquid Temperature: 22.7°C

DASY6 Configuration:

- Probe: EX3DV4 - SN3642; ConvF(4.23, 4.23, 4.23); Calibrated: 2023-04-26
- Sensor-Surface: 1.4 mm
- Electronics: DAE4 Sn1694; Calibrated: 2022-11-18
- Phantom: Twin-SAM V8.0 (30deg probe tilt); Serial: 2055; Section: Flat
- Measurement Software: 16.2.4.2524
- UID: CW, 10554-AAE

Area Scan (60.0 mm x 80.0 mm): Measurement Grid: 10.0 mm x 10.0 mm
SAR (1g) = 5.15 W/kg; SAR (10g) = 1.15 W/kg;

Zoom Scan (22.0 mm x 22.0 mm x 22.0 mm): Measurement Grid: 2.6 mm x 2.6 mm x 1.2 mm
Power Drift = 0.00 dB
SAR (1g) = 4.47 W/kg; SAR (8g) = 1.19 W/kg; SAR (10g) = 0.997 W/kg
Smallest distance from peaks to all points 3 dB below = 3.8 mm
Ratio of SAR at M2 to SAR at M1 = 64.1 %



#112_WLAN6GHz_802.11ax-HE160 MCS0_Top Side_0mm_Ch207;Ant 4+3

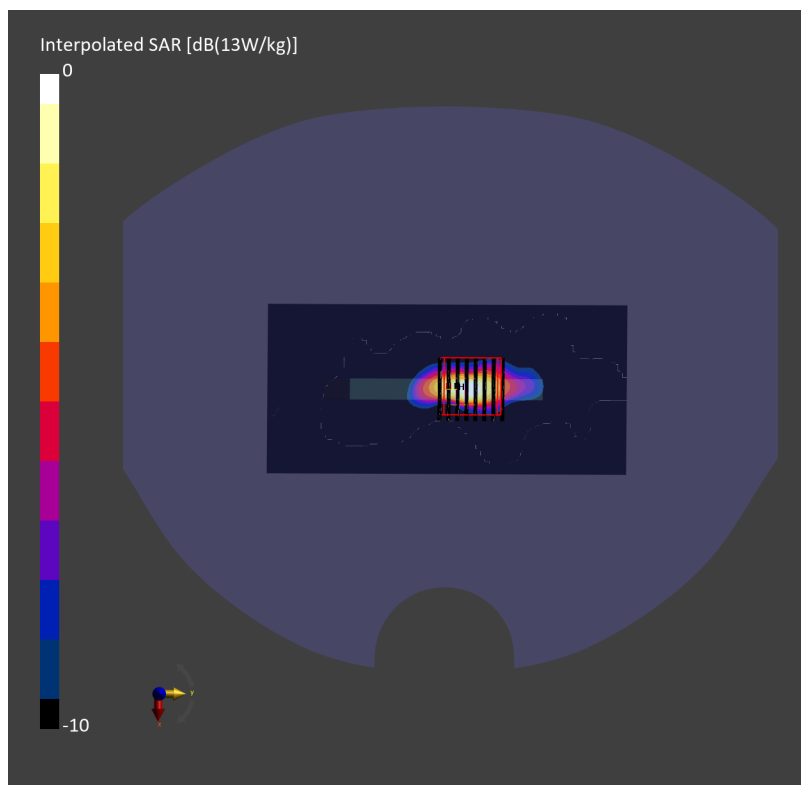
Communication System: 802.11ax ; Frequency: 6985.000 MHz; Duty Cycle: 1:1.161
Medium: HSL_6G_230611 Medium parameters used: $f=6985.000$ MHz; $\sigma=6.77$ S/m; $\epsilon_r=33.9$
Ambient Temperature: 23.7°C; Liquid Temperature: 22.7°C

DASY6 Configuration:

- Probe: EX3DV4 - SN3642; ConvF(5.2, 5.2, 5.2); Calibrated: 2023-04-26
- Sensor-Surface: 1.4 mm
- Electronics: DAE4 Sn1694; Calibrated: 2022-11-18
- Phantom: Twin-SAM V8.0 (30deg probe tilt); Serial: 2055; Section: Flat
- Measurement Software: 16.2.4.2524
- UID: WLAN, 10755-AAC

Area Scan (64.0 mm x 136.0 mm): Measurement Grid: 8.0 mm x 8.5 mm
SAR (1g) = 0.12 W/kg; SAR (10g) = 0.362 W/kg;

Zoom Scan (23.8 mm x 23.8 mm x 22.0 mm): Measurement Grid: 3.4 mm x 3.4 mm x 1.4 mm
Power Drift = 0.03 dB
SAR (1g) = 1.25 W/kg; SAR (8g) = 0.334 W/kg; SAR (10g) = 0.279 W/kg
Smallest distance from peaks to all points 3 dB below = 3.4 mm
Ratio of SAR at M2 to SAR at M1 = 46.3 %
psAPD (1.0cm², sq) = 14.9 [W/m²]; psAPD (4.0cm², sq) = 6.59 [W/m²]



#113_NFC_Back_0mm_13.56MHz

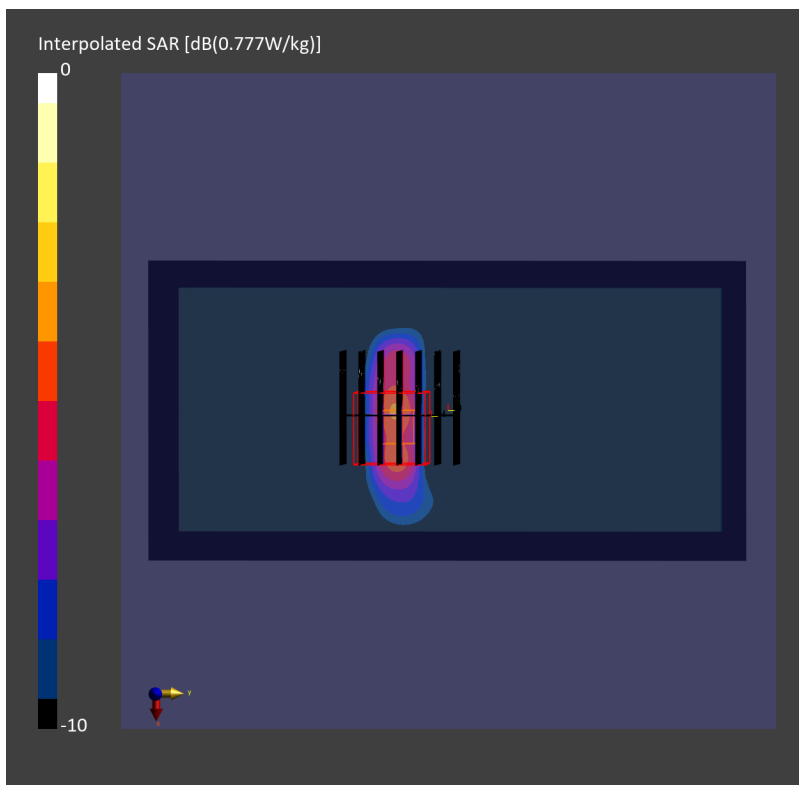
Communication System: CW; Frequency: 14.0 MHz; Duty Cycle: 1:1
Medium: HSL_13_230418 Medium parameters used: $f=14.0$ MHz; $\sigma=0.748$ S/m; $\epsilon_r=53.6$
Ambient Temperature: 23.5°C; Liquid Temperature: 22.5°C

DASY6 Configuration:

- Probe: EX3DV4 - SN7306; ConvF(16.39, 16.39, 16.39); Calibrated: 2022-07-28
- Sensor-Surface: 1.4 mm
- Electronics: DAE4 Sn1694; Calibrated: 2022-11-18
- Phantom: ELI V8.0 (20deg probe tilt); Serial: 2156; Section: Flat
- Measurement Software: 16.2.4.1816
- UID: CW, 0--

Area Scan (90.0 mm x 180.0 mm): Measurement Grid: 15.0 mm x 15.0 mm
SAR (1g) = 0.267 W/kg; SAR (10g) = 0.169 W/kg;

Zoom Scan (30.0 mm x 32.0 mm x 30.0 mm): Measurement Grid: 5.7 mm x 5.7 mm x 1.5 mm
Power Drift = 0.03 dB
SAR (1g) = 0.234 W/kg; SAR (8g) = 0.099 W/kg; SAR (10g) = 0.087 W/kg
Smallest distance from peaks to all points 3 dB below = 4.6 mm
Ratio of SAR at M2 to SAR at M1 = 63.9 %



#114_LTE Band 41 Ant 2_20M_QPSK_1_0_Right Cheek_0mm_Ch40185

Communication System: LTE-TDD; Frequency: 2549.500 MHz; Duty Cycle: 1:1.59
Medium: HSL_2600_230514 Medium parameters used: $f=2549.500$ MHz; $\sigma=1.89$ S/m; $\epsilon_r=38.4$

Ambient Temperature: 23.7°C; Liquid Temperature: 22.7°C

DASY6 Configuration:

- Probe: EX3DV4 - SN3925; ConvF(7.78, 7.78, 7.78); Calibrated: 2023-04-25
- Sensor-Surface: 1.4 mm
- Electronics: DAE4 Sn853; Calibrated: 2022-07-20
- Phantom: Twin-SAM V5.0 (30deg probe tilt); Serial: 1719; Section: RightHead
- Measurement Software: 16.2.4.2524
- UID: LTE-TDD, 10172-CAH

Area Scan (120.0 mm x 200.0 mm): Measurement Grid: 10.0 mm x 10.0 mm

SAR (1g) = 0.365 W/kg; SAR (10g) = 0.193 W/kg;

Zoom Scan (30.0 mm x 30.0 mm x 30.0 mm): Measurement Grid: 5.0 mm x 5.0 mm x 1.5 mm

Power Drift = -0.06 dB

SAR (1g) = 0.379 W/kg; SAR (8g) = 0.232 W/kg; SAR (10g) = 0.216 W/kg

Smallest distance from peaks to all points 3 dB below = 13.0 mm

Ratio of SAR at M2 to SAR at M1 = 84.8 %

