

System Check_Head_750MHz

DUT: D750V3 - SN1012

Communication System: CW; Frequency: 750.000 MHz; Duty Cycle: 1:1

Medium: HSL_750_230508 Medium parameters used: $f=750.000$ MHz; $\sigma=0.895$ S/m; $\epsilon_r=43.5$

Ambient Temperature: 23.6°C; Liquid Temperature: 22.6°C

DASY6 Configuration:

- Probe: EX3DV4 - SN7439; ConvF(10.06, 10.06, 10.06); Calibrated: 2023-02-21
- Sensor-Surface: 1.4 mm
- Electronics: DAE4 Sn854; Calibrated: 2022-08-24
- Phantom: Twin-SAM V5.0 (30deg probe tilt); Serial: 1884; Section: Flat
- Measurement Software: 16.2.4.2524
- UID: CW, 0--

Pin=250mW/Area Scan (40.0 mm x 90.0 mm): Measurement Grid: 10.0 mm x 15.0 mm

SAR (1g) = 2.11 W/kg; SAR (10g) = 1.40 W/kg;

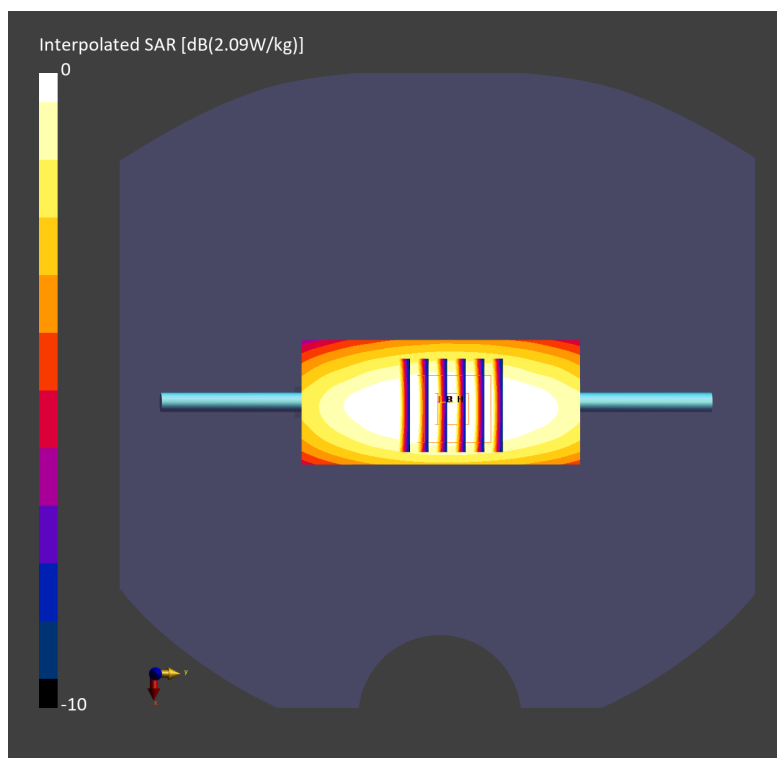
Pin=250mW/Zoom Scan (30.0 mm x 30.0 mm x 30.0 mm): Measurement Grid: 6.0 mm x 6.0 mm x 1.5 mm

Power Drift = 0.01 dB

SAR (1g) = 2.09 W/kg; SAR (8g) = 1.43 W/kg; SAR (10g) = 1.36 W/kg

Smallest distance from peaks to all points 3 dB below = 16.4 mm

Ratio of SAR at M2 to SAR at M1 = 85.4 %



System Check_Head_750MHz

DUT: D750V3 - SN1012

Communication System: CW; Frequency: 750.000 MHz; Duty Cycle: 1:1

Medium: HSL_750_230512 Medium parameters used: $f=750.000$ MHz; $\sigma=0.888$ S/m; $\epsilon_r=43.2$

Ambient Temperature: 23.5°C; Liquid Temperature: 22.5°C

DASY6 Configuration:

- Probe: EX3DV4 - SN3925; ConvF(10.36, 10.36, 10.36); Calibrated: 2023-04-25
- Sensor-Surface: 1.4 mm
- Electronics: DAE4 Sn853; Calibrated: 2022-07-20
- Phantom: Twin-SAM V5.0 (30deg probe tilt); Serial: 1719; Section: Flat
- Measurement Software: 16.2.4.2524
- UID: CW, 0--

Pin=17.0dBm/Area Scan (40.0 mm x 90.0 mm): Measurement Grid: 10.0 mm x 15.0 mm
SAR (1g) = 0.420 W/kg; SAR (10g) = 0.279 W/kg;

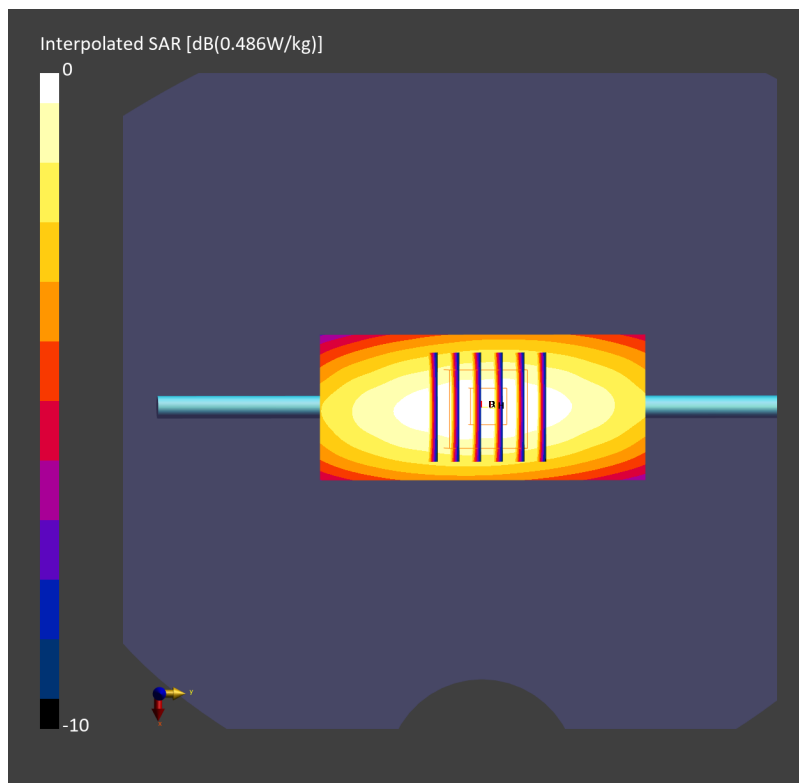
Pin=17.0dBm/Zoom Scan (30.0 mm x 30.0 mm x 30.0 mm): Measurement Grid: 6.0 mm x 6.0 mm x 1.5 mm

Power Drift = 0.02 dB

SAR (1g) = 0.416 W/kg; SAR (8g) = 0.290 W/kg; SAR (10g) = 0.276 W/kg

Smallest distance from peaks to all points 3 dB below = 19.7 mm

Ratio of SAR at M2 to SAR at M1 = 87.2 %



System Check_Head_750MHz**DUT: D750V3 - SN1012**

Communication System: CW; Frequency: 750.000 MHz; Duty Cycle: 1:1

Medium: HSL_750_230528 Medium parameters used: $f=750.000$ MHz; $\sigma=0.903$ S/m; $\epsilon_r=43.8$

Ambient Temperature: 23.5°C; Liquid Temperature: 22.5°C

DASY6 Configuration:

- Probe: EX3DV4 - SN7439; ConvF(10.06, 10.06, 10.06); Calibrated: 2023-02-21
- Sensor-Surface: 1.4 mm
- Electronics: DAE4 Sn854; Calibrated: 2022-08-24
- Phantom: Twin-SAM V5.0 (30deg probe tilt); Serial: 1884; Section: Flat
- Measurement Software: 16.2.4.2524
- UID: CW, 0--

Pin=250mW/Area Scan (40.0 mm x 90.0 mm): Measurement Grid: 10.0 mm x 15.0 mm

SAR (1g) = 2.22 W/kg; SAR (10g) = 1.48 W/kg;

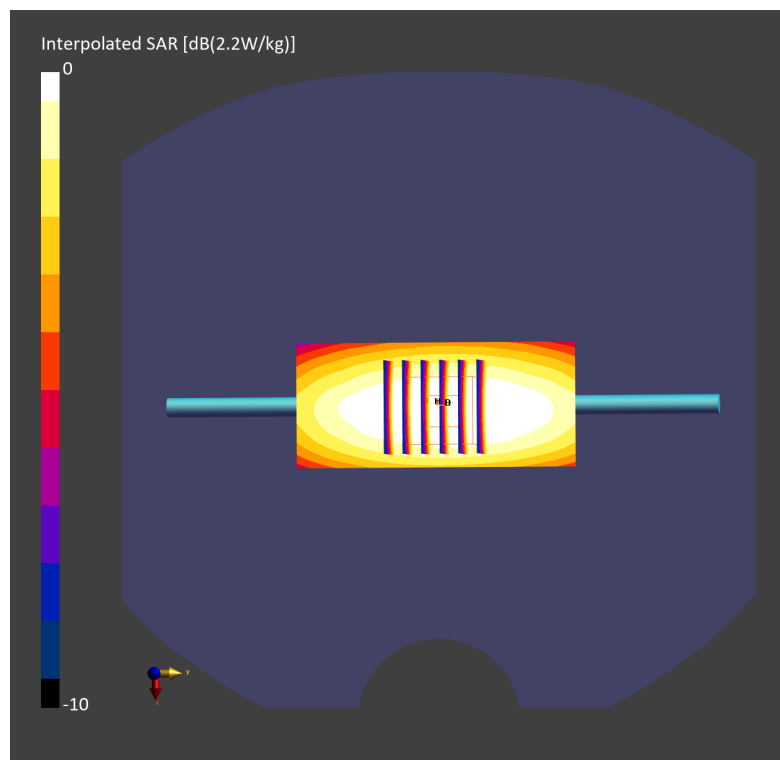
Pin=250mW/Zoom Scan (30.0 mm x 30.0 mm x 30.0 mm): Measurement Grid: 6.0 mm x 6.0 mm x 1.5 mm

Power Drift = -0.05 dB

SAR (1g) = 2.20 W/kg; SAR (8g) = 1.50 W/kg; SAR (10g) = 1.42 W/kg

Smallest distance from peaks to all points 3 dB below = 16.4 mm

Ratio of SAR at M2 to SAR at M1 = 85.6 %



System Check_Head_835MHz**DUT: D835V2 - SN4d060**

Communication System: CW; Frequency: 835.000 MHz; Duty Cycle: 1:1

Medium: HSL_850_230505 Medium parameters used: $f=835.000$ MHz; $\sigma=0.926$ S/m; $\epsilon_r=42.9$

Ambient Temperature: 23.3°C; Liquid Temperature: 22.3°C

DASY6 Configuration:

- Probe: EX3DV4 - SN7439; ConvF(9.84, 9.84, 9.84); Calibrated: 2023-02-21
- Sensor-Surface: 1.4 mm
- Electronics: DAE4 Sn854; Calibrated: 2022-08-24
- Phantom: Twin-SAM V5.0 (30deg probe tilt); Serial: 1884; Section: Flat
- Measurement Software: 16.2.4.2524
- UID: CW, 0--

Pin=100mW/Area Scan (40.0 mm x 90.0 mm): Measurement Grid: 10.0 mm x 15.0 mm

SAR (1g) = 0.977 W/kg; SAR (10g) = 0.644 W/kg;

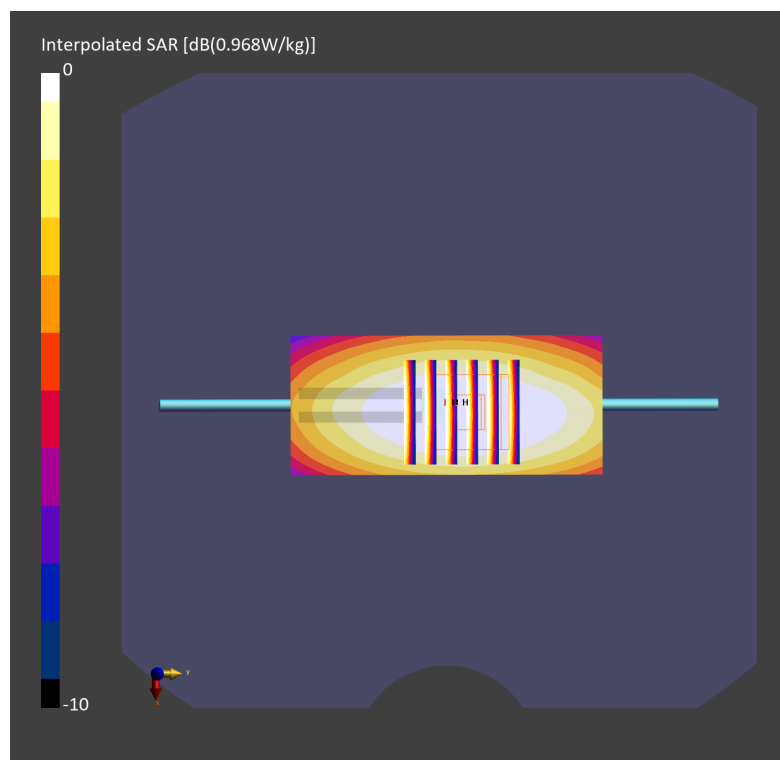
Pin=100mW/Zoom Scan (30.0 mm x 30.0 mm x 30.0 mm): Measurement Grid: 6.0 mm x 6.0 mm x 1.5 mm

Power Drift = 0.12 dB

SAR (1g) = 0.968 W/kg; SAR (8g) = 0.664 W/kg; SAR (10g) = 0.629 W/kg

Smallest distance from peaks to all points 3 dB below = 19.0 mm

Ratio of SAR at M2 to SAR at M1 = 86.8 %



System Check_Head_835MHz

DUT: D835V2 - SN4d060

Communication System: CW; Frequency: 835.000 MHz; Duty Cycle: 1:1

Medium: HSL_835_230512 Medium parameters used: $f=835.000$ MHz; $\sigma=0.919$ S/m; $\epsilon_r=42.7$

Ambient Temperature: 23.5°C; Liquid Temperature: 22.5°C

DASY6 Configuration:

- Probe: EX3DV4 - SN3925; ConvF(10.29, 10.29, 10.29); Calibrated: 2023-04-25
- Sensor-Surface: 1.4 mm
- Electronics: DAE4 Sn853; Calibrated: 2022-07-20
- Phantom: Twin-SAM V5.0 (30deg probe tilt); Serial: 1719; Section: Flat
- Measurement Software: 16.2.4.2524
- UID: CW, 0--

Pin=17.0dBm/Area Scan (40.0 mm x 90.0 mm): Measurement Grid: 10.0 mm x 15.0 mm
SAR (1g) = 0.502 W/kg; SAR (10g) = 0.330 W/kg;

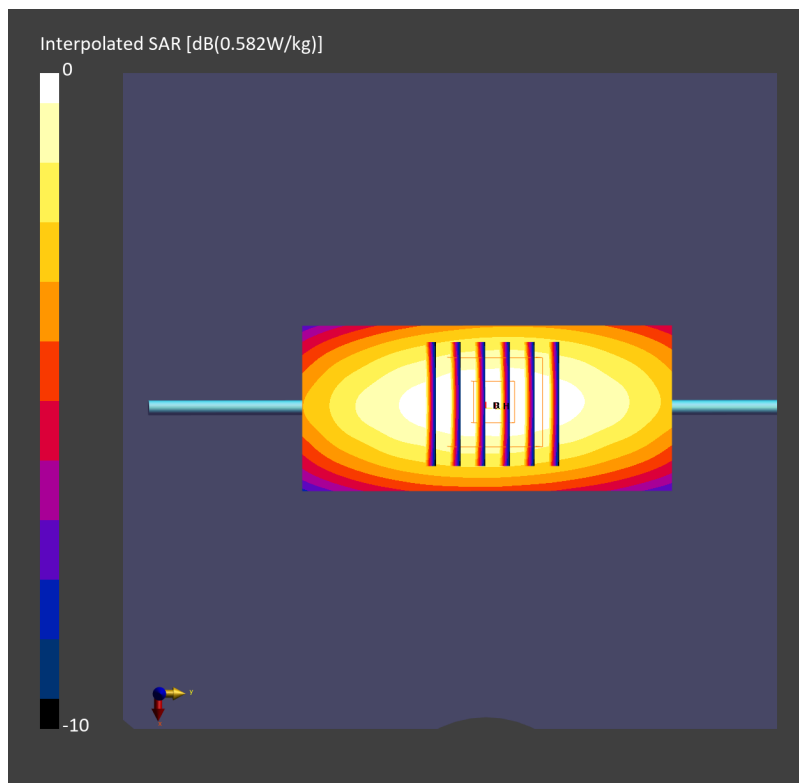
Pin=17.0dBm/Zoom Scan (30.0 mm x 30.0 mm x 30.0 mm): Measurement Grid: 6.0 mm x 6.0 mm x 1.5 mm

Power Drift = 0.00 dB

SAR (1g) = 0.501 W/kg; SAR (8g) = 0.347 W/kg; SAR (10g) = 0.329 W/kg

Smallest distance from peaks to all points 3 dB below = 17.8 mm

Ratio of SAR at M2 to SAR at M1 = 87.5 %



System Check_Head_1750MHz

DUT: D1750V2 - SN1068

Communication System: CW; Frequency: 1750.000 MHz; Duty Cycle: 1:1
Medium: HSL_1750_230513 Medium parameters used: $f=1750.000$ MHz; $\sigma=1.36$ S/m; $\epsilon_r=40.1$
Ambient Temperature: 23.6°C; Liquid Temperature: 22.6°C

DASY6 Configuration:

- Probe: EX3DV4 - SN3925; ConvF(8.92, 8.92, 8.92); Calibrated: 2023-04-25
- Sensor-Surface: 1.4 mm
- Electronics: DAE4 Sn853; Calibrated: 2022-07-20
- Phantom: Twin-SAM V5.0 (30deg probe tilt); Serial: 1719; Section: Flat
- Measurement Software: 16.2.4.2524
- UID: CW, 0--

Pin=17.0dBm/Area Scan (40.0 mm x 90.0 mm): Measurement Grid: 10.0 mm x 15.0 mm
SAR (1g) = 1.79 W/kg; SAR (10g) = 0.947 W/kg;

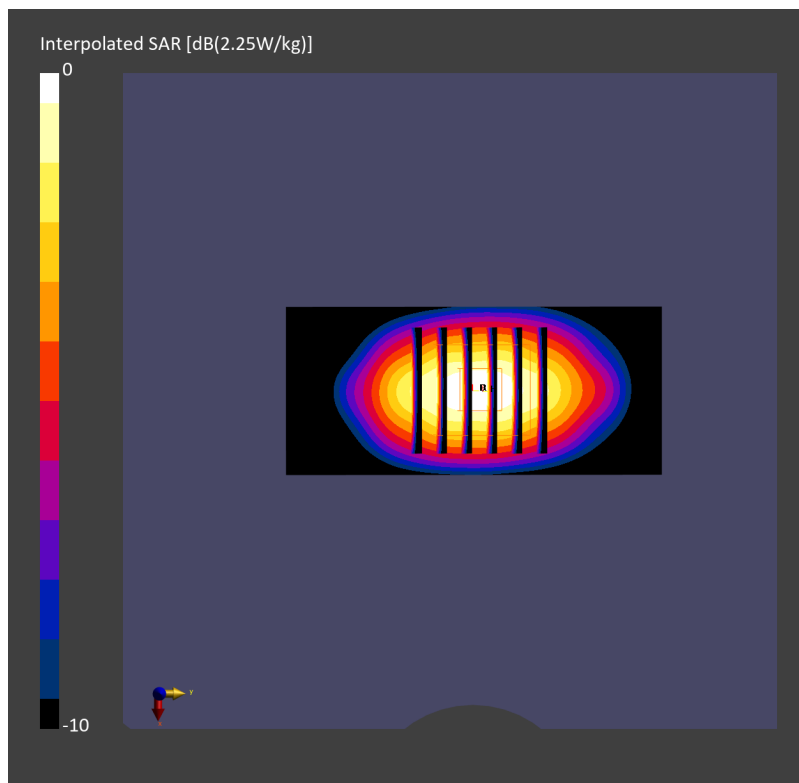
Pin=17.0dBm/Zoom Scan (30.0 mm x 30.0 mm x 30.0 mm): Measurement Grid: 6.0 mm x 6.0 mm x 1.5 mm

Power Drift = -0.01 dB

SAR (1g) = 1.78 W/kg; SAR (8g) = 1.04 W/kg; SAR (10g) = 0.958 W/kg

Smallest distance from peaks to all points 3 dB below = 9.6 mm

Ratio of SAR at M2 to SAR at M1 = 82.0 %



System Check_Head_1750MHz

DUT: D1750V2 - SN1068

Communication System: CW; Frequency: 1750.000 MHz; Duty Cycle: 1:1

Medium: HSL_1750_230523 Medium parameters used: $f=1750.000$ MHz; $\sigma=1.38$ S/m; $\epsilon_r=40.7$

Ambient Temperature: 23.3°C; Liquid Temperature: 22.3°C

DASY6 Configuration:

- Probe: EX3DV4 - SN7439; ConvF(8.25, 8.25, 8.25); Calibrated: 2023-02-21
- Sensor-Surface: 1.4 mm
- Electronics: DAE4 Sn854; Calibrated: 2022-08-24
- Phantom: Twin-SAM V5.0 (30deg probe tilt); Serial: 1884; Section: Flat
- Measurement Software: 16.2.4.2524
- UID: CW, 0--

Pin=250mW/Area Scan (40.0 mm x 90.0 mm): Measurement Grid: 10.0 mm x 15.0 mm

SAR (1g) = 9.72 W/kg; SAR (10g) = 5.19 W/kg;

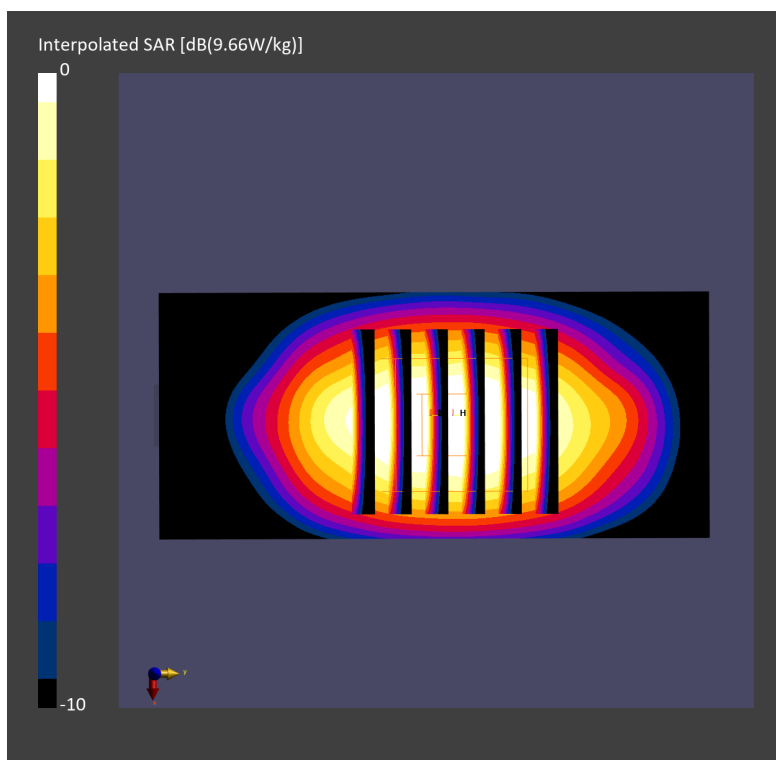
Pin=250mW/Zoom Scan (30.0 mm x 30.0 mm x 30.0 mm): Measurement Grid: 6.0 mm x 6.0 mm x 1.5 mm

Power Drift = -0.12 dB

SAR (1g) = 9.66 W/kg; SAR (8g) = 5.52 W/kg; SAR (10g) = 5.09 W/kg

Smallest distance from peaks to all points 3 dB below = 10.8 mm

Ratio of SAR at M2 to SAR at M1 = 80.6 %



System Check_Head_1750MHz

DUT: D1750V2 - SN1068

Communication System: CW; Frequency: 1750.000 MHz; Duty Cycle: 1:1

Medium: HSL_1750_230524 Medium parameters used: $f = 1750.000$ MHz; $\sigma = 1.36$ S/m; $\epsilon_r = 40.7$

Ambient Temperature: 23.4°C; Liquid Temperature: 22.4°C

DASY6 Configuration:

- Probe: EX3DV4 - SN7439; ConvF(8.25, 8.25, 8.25); Calibrated: 2023-02-21
- Sensor-Surface: 1.4 mm
- Electronics: DAE4 Sn854; Calibrated: 2022-08-24
- Phantom: Twin-SAM V5.0 (30deg probe tilt); Serial: 1884; Section: Flat
- Measurement Software: 16.2.4.2524
- UID: CW, 0--

Pin=250mW/Area Scan (40.0 mm x 90.0 mm): Measurement Grid: 10.0 mm x 15.0 mm

SAR (1g) = 9.85 W/kg; SAR (10g) = 5.26 W/kg;

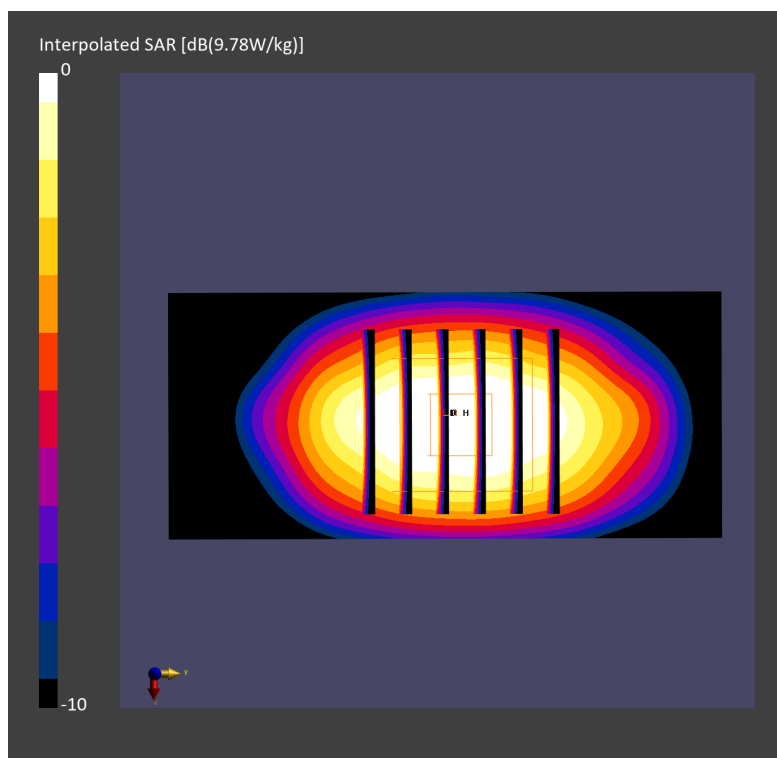
Pin=250mW/Zoom Scan (30.0 mm x 30.0 mm x 30.0 mm): Measurement Grid: 6.0 mm x 6.0 mm x 1.5 mm

Power Drift = 0.11 dB

SAR (1g) = 9.78 W/kg; SAR (8g) = 5.59 W/kg; SAR (10g) = 5.15 W/kg

Smallest distance from peaks to all points 3 dB below = 10.8 mm

Ratio of SAR at M2 to SAR at M1 = 80.5 %



System Check_Head_1750MHz

DUT: D1750V2 - SN1068

Communication System: CW; Frequency: 1750.000 MHz; Duty Cycle: 1:1

Medium: HSL_1750_230525 Medium parameters used: $f=1750.000$ MHz; $\sigma=1.38$ S/m; $\epsilon_r=40.8$

Ambient Temperature: 23.6°C; Liquid Temperature: 22.6°C

DASY6 Configuration:

- Probe: EX3DV4 - SN7439; ConvF(8.25, 8.25, 8.25); Calibrated: 2023-02-21
- Sensor-Surface: 1.4 mm
- Electronics: DAE4 Sn854; Calibrated: 2022-08-24
- Phantom: Twin-SAM V5.0 (30deg probe tilt); Serial: 1884; Section: Flat
- Measurement Software: 16.2.4.2524
- UID: CW, 0--

Pin=250mW/Area Scan (40.0 mm x 90.0 mm): Measurement Grid: 10.0 mm x 15.0 mm

SAR (1g) = 9.43 W/kg; SAR (10g) = 5.04 W/kg;

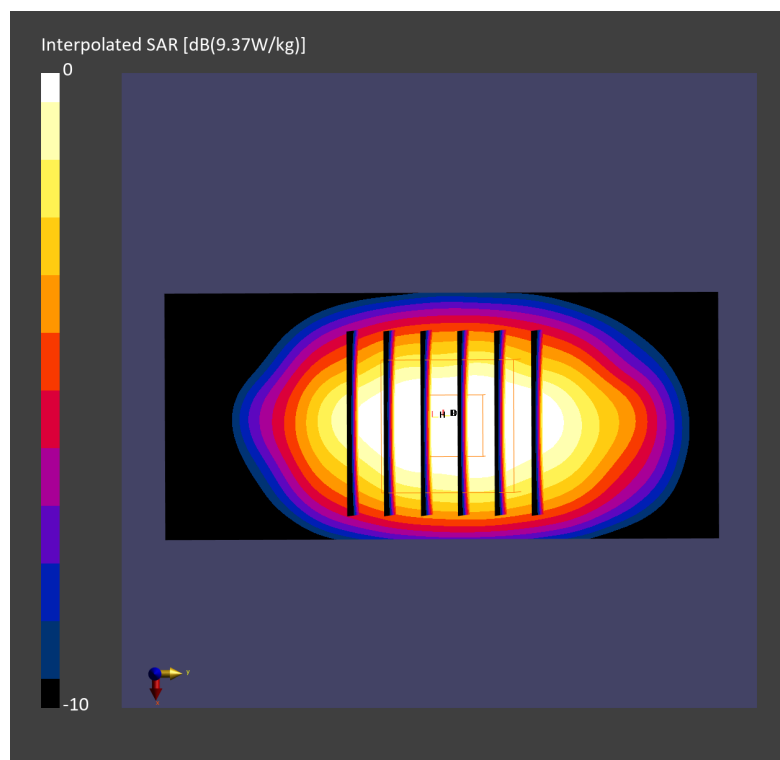
Pin=250mW/Zoom Scan (30.0 mm x 30.0 mm x 30.0 mm): Measurement Grid: 6.0 mm x 6.0 mm x 1.5 mm

Power Drift = -0.08 dB

SAR (1g) = 9.37 W/kg; SAR (8g) = 5.35 W/kg; SAR (10g) = 4.93 W/kg

Smallest distance from peaks to all points 3 dB below = 10.8 mm

Ratio of SAR at M2 to SAR at M1 = 80.5 %



System Check_Head_1750MHz

DUT: D1750V2 - SN1068

Communication System: CW; Frequency: 1750.000 MHz; Duty Cycle: 1:1

Medium: HSL_1750_230526 Medium parameters used: $f = 1750.000$ MHz; $\sigma = 1.35$ S/m; $\epsilon_r = 40.4$

Ambient Temperature: 23.6°C; Liquid Temperature: 22.6°C

DASY6 Configuration:

- Probe: EX3DV4 - SN7439; ConvF(8.25, 8.25, 8.25); Calibrated: 2023-02-21
- Sensor-Surface: 1.4 mm
- Electronics: DAE4 Sn854; Calibrated: 2022-08-24
- Phantom: Twin-SAM V5.0 (30deg probe tilt); Serial: 1884; Section: Flat
- Measurement Software: 16.2.4.2524
- UID: CW, 0--

Pin=250mW/Area Scan (40.0 mm x 90.0 mm): Measurement Grid: 10.0 mm x 15.0 mm

SAR (1g) = 9.58 W/kg; SAR (10g) = 5.12 W/kg;

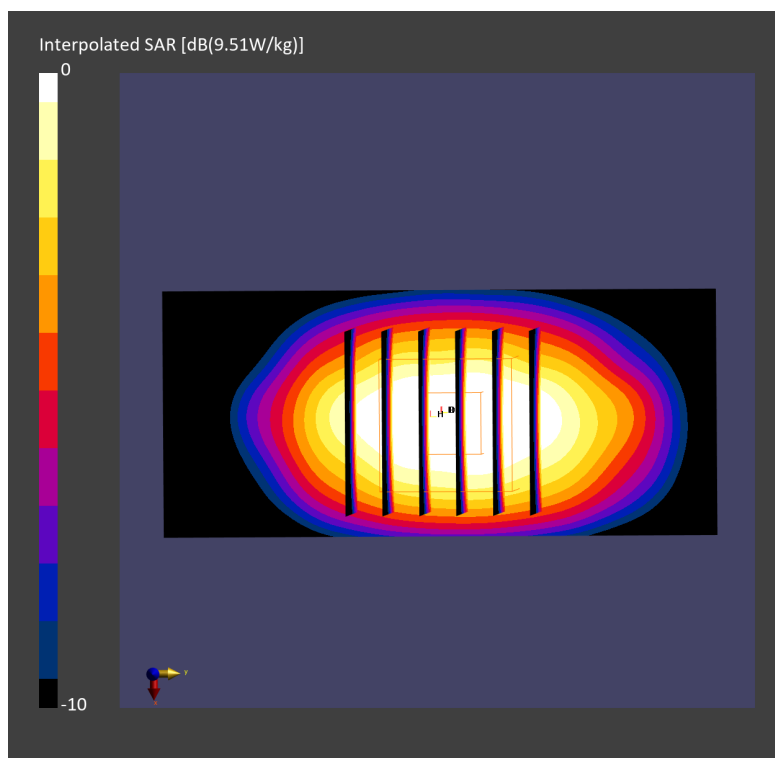
Pin=250mW/Zoom Scan (30.0 mm x 30.0 mm x 30.0 mm): Measurement Grid: 6.0 mm x 6.0 mm x 1.5 mm

Power Drift = 0.11 dB

SAR (1g) = 9.51 W/kg; SAR (8g) = 5.43 W/kg; SAR (10g) = 5.00 W/kg

Smallest distance from peaks to all points 3 dB below = 10.8 mm

Ratio of SAR at M2 to SAR at M1 = 80.5 %



System Check_Head_1900MHz**DUT: D1900V2 - SN5d093**

Communication System: CW; Frequency: 1900.000 MHz; Duty Cycle: 1:1

Medium: HSL_1900_230501 Medium parameters used: $f = 1900.000$ MHz; $\sigma = 1.43$ S/m; $\epsilon_r = 39.3$

Ambient Temperature: 23.2°C; Liquid Temperature: 22.2°C

DASY6 Configuration:

- Probe: EX3DV4 - SN7439; ConvF(7.92, 7.92, 7.92); Calibrated: 2023-02-21
- Sensor-Surface: 1.4 mm
- Electronics: DAE4 Sn854; Calibrated: 2022-08-24
- Phantom: Twin-SAM V5.0 (30deg probe tilt); Serial: 1884; Section: Flat
- Measurement Software: 16.2.4.2524
- UID: CW, 0--

Pin=100mW/Area Scan (40.0 mm x 90.0 mm): Measurement Grid: 10.0 mm x 15.0 mm

SAR (1g) = 4.35 W/kg; SAR (10g) = 2.24 W/kg;

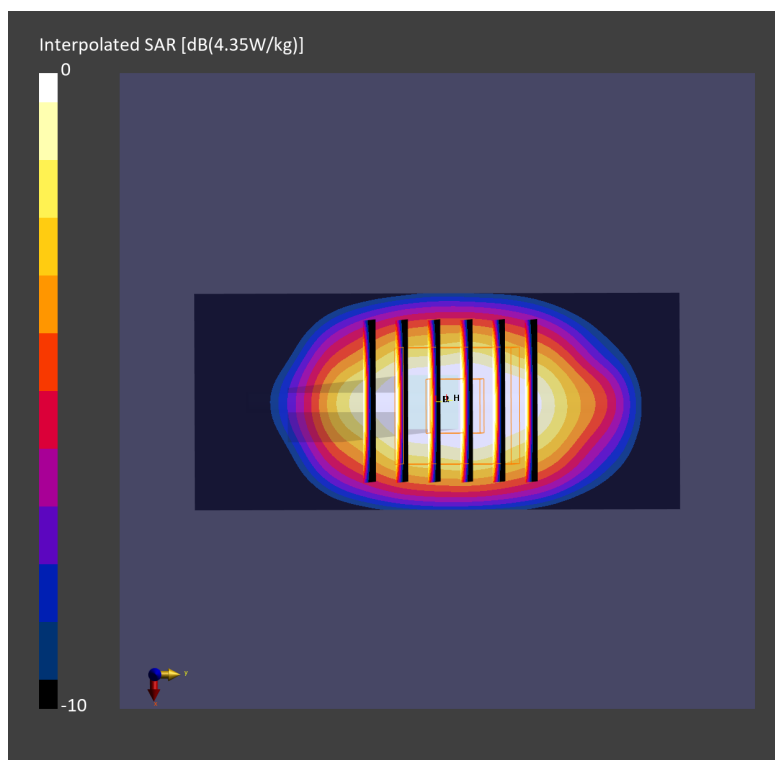
Pin=100mW/Zoom Scan (30.0 mm x 30.0 mm x 30.0 mm): Measurement Grid: 6.0 mm x 6.0 mm x 1.5 mm

Power Drift = 0.03 dB

SAR (1g) = 4.35 W/kg; SAR (8g) = 2.42 W/kg; SAR (10g) = 2.23 W/kg

Smallest distance from peaks to all points 3 dB below = 9.6 mm

Ratio of SAR at M2 to SAR at M1 = 80.5 %



System Check_Head_1900MHz

DUT: D1900V2 - SN5d093

Communication System: CW; Frequency: 1900.000 MHz; Duty Cycle: 1:1

Medium: HSL_1900_230502 Medium parameters used: $f=1900.000$ MHz; $\sigma=1.44$ S/m; $\epsilon_r=39.1$

Ambient Temperature: 23.4°C; Liquid Temperature: 22.4°C

DASY6 Configuration:

- Probe: EX3DV4 - SN7439; ConvF(7.92, 7.92, 7.92); Calibrated: 2023-02-21
- Sensor-Surface: 1.4 mm
- Electronics: DAE4 Sn854; Calibrated: 2022-08-24
- Phantom: Twin-SAM V5.0 (30deg probe tilt); Serial: 1884; Section: Flat
- Measurement Software: 16.2.4.2524
- UID: CW, 0--

Pin=100mW/Area Scan (40.0 mm x 90.0 mm): Measurement Grid: 10.0 mm x 15.0 mm

SAR (1g) = 4.21 W/kg; SAR (10g) = 2.17 W/kg;

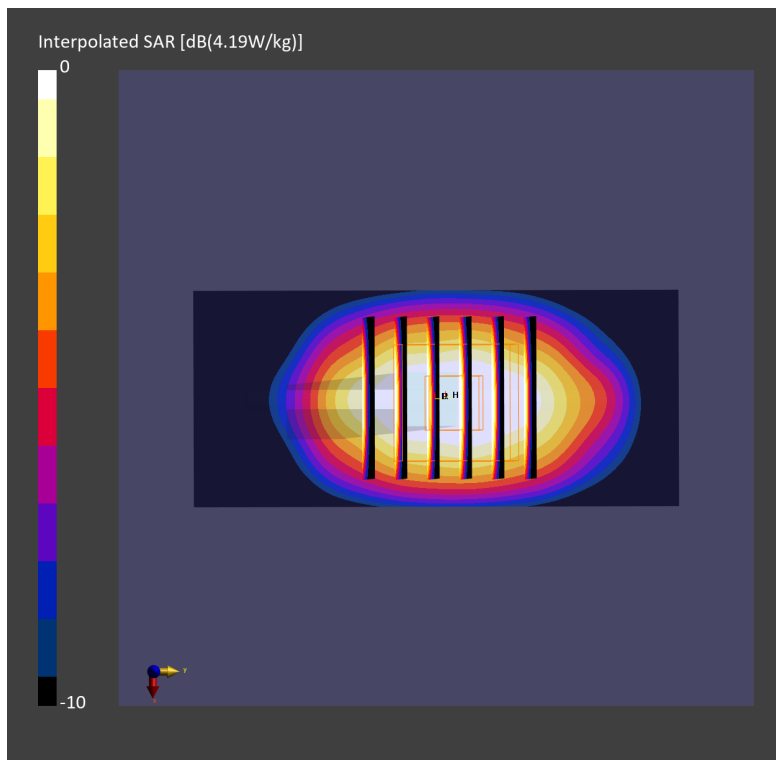
Pin=100mW/Zoom Scan (30.0 mm x 30.0 mm x 30.0 mm): Measurement Grid: 6.0 mm x 6.0 mm x 1.5 mm

Power Drift = 0.01 dB

SAR (1g) = 4.19 W/kg; SAR (8g) = 2.34 W/kg; SAR (10g) = 2.15 W/kg

Smallest distance from peaks to all points 3 dB below = 9.6 mm

Ratio of SAR at M2 to SAR at M1 = 80.5 %



System Check_Head_1900MHz**DUT: D1900V2 - SN5d093**

Communication System: CW; Frequency: 1900.000 MHz; Duty Cycle: 1:1

Medium: HSL_1900_230503 Medium parameters used: $f = 1900.000$ MHz; $\sigma = 1.46$ S/m; $\epsilon_r = 40.9$

Ambient Temperature: 23.3°C; Liquid Temperature: 22.3°C

DASY6 Configuration:

- Probe: EX3DV4 - SN7439; ConvF(7.92, 7.92, 7.92); Calibrated: 2023-02-21
- Sensor-Surface: 1.4 mm
- Electronics: DAE4 Sn854; Calibrated: 2022-08-24
- Phantom: Twin-SAM V5.0 (30deg probe tilt); Serial: 1884; Section: Flat
- Measurement Software: 16.2.4.2524
- UID: CW, 0--

Pin=100mW/Area Scan (40.0 mm x 90.0 mm): Measurement Grid: 10.0 mm x 15.0 mm

SAR (1g) = 4.53 W/kg; SAR (10g) = 2.33 W/kg;

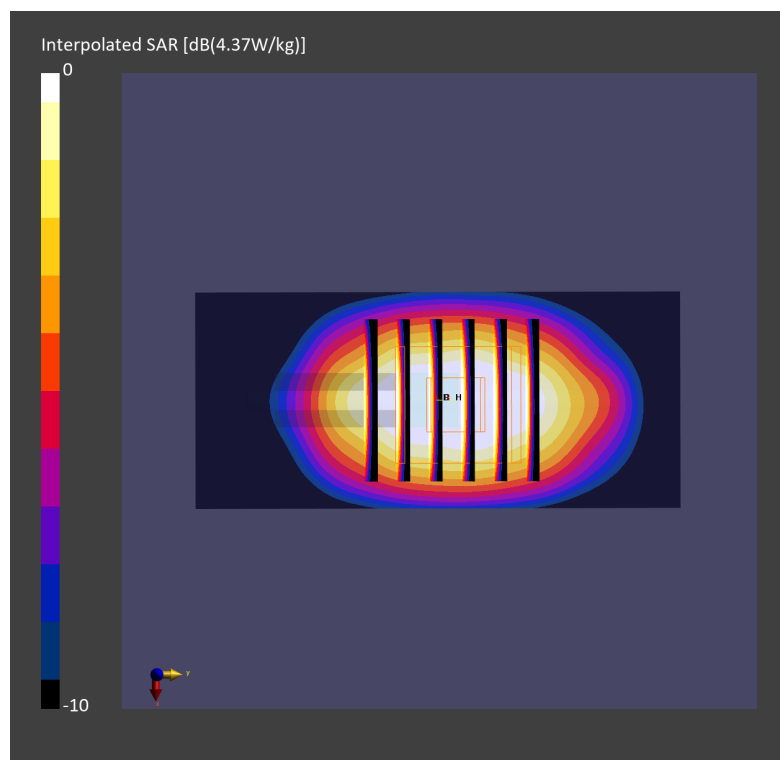
Pin=100mW/Zoom Scan (30.0 mm x 30.0 mm x 30.0 mm): Measurement Grid: 6.0 mm x 6.0 mm x 1.5 mm

Power Drift = -0.12 dB

SAR (1g) = 4.37 W/kg; SAR (8g) = 2.44 W/kg; SAR (10g) = 2.24 W/kg

Smallest distance from peaks to all points 3 dB below = 9.6 mm

Ratio of SAR at M2 to SAR at M1 = 80.5 %



System Check_Head_1900MHz

DUT: D1900V2 - SN5d093

Communication System: CW; Frequency: 1900.000 MHz; Duty Cycle: 1:1

Medium: HSL_1900_230504 Medium parameters used: $f=1900.000$ MHz; $\sigma=1.43$ S/m; $\epsilon_r=39.1$

Ambient Temperature: 23.5°C; Liquid Temperature: 22.5°C

DASY6 Configuration:

- Probe: EX3DV4 - SN7439; ConvF(7.92, 7.92, 7.92); Calibrated: 2023-02-21
- Sensor-Surface: 1.4 mm
- Electronics: DAE4 Sn854; Calibrated: 2022-08-24
- Phantom: Twin-SAM V5.0 (30deg probe tilt); Serial: 1884; Section: Flat
- Measurement Software: 16.2.4.2524
- UID: CW, 0--

Pin=100mW/Area Scan (40.0 mm x 90.0 mm): Measurement Grid: 10.0 mm x 15.0 mm

SAR (1g) = 4.24 W/kg; SAR (10g) = 2.18 W/kg;

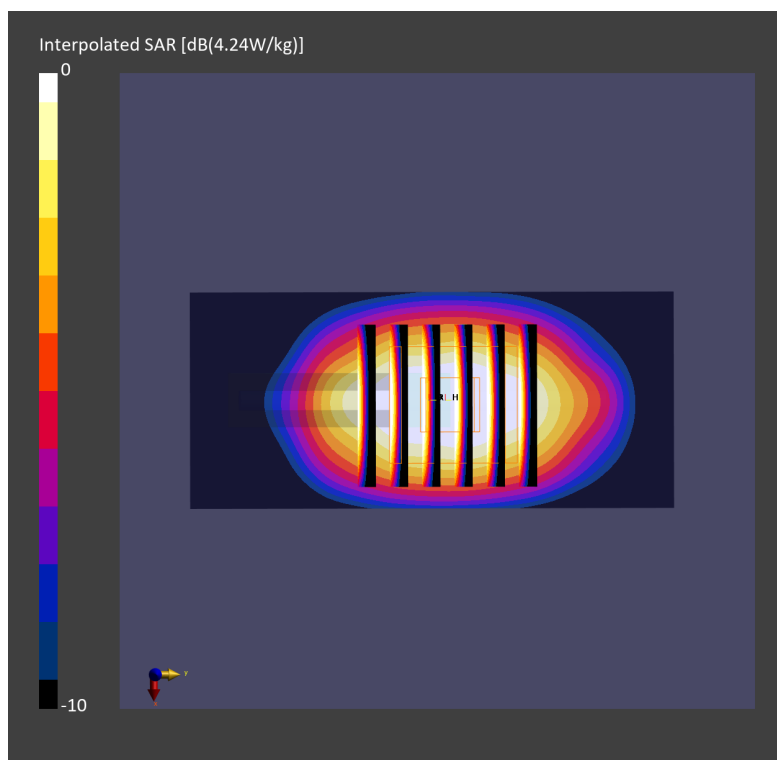
Pin=100mW/Zoom Scan (30.0 mm x 30.0 mm x 30.0 mm): Measurement Grid: 6.0 mm x 6.0 mm x 1.5 mm

Power Drift = 0.01 dB

SAR (1g) = 4.24 W/kg; SAR (8g) = 2.37 W/kg; SAR (10g) = 2.17 W/kg

Smallest distance from peaks to all points 3 dB below = 9.6 mm

Ratio of SAR at M2 to SAR at M1 = 82.3 %



System Check_Head_1900MHz

DUT: D1900V2 - SN5d093

Communication System: CW; Frequency: 1900.000 MHz; Duty Cycle: 1:1
Medium: HSL_1900_230513 Medium parameters used: $f=1900.000$ MHz; $\sigma=1.43$ S/m; $\epsilon_r=40.0$
Ambient Temperature: 23.6°C; Liquid Temperature: 22.6°C

DASY6 Configuration:

- Probe: EX3DV4 - SN3925; ConvF(8.6, 8.6, 8.6); Calibrated: 2023-04-25
- Sensor-Surface: 1.4 mm
- Electronics: DAE4 Sn853; Calibrated: 2022-07-20
- Phantom: Twin-SAM V5.0 (30deg probe tilt); Serial: 1719; Section: Flat
- Measurement Software: 16.2.4.2524
- UID: CW, 0--

Pin=17.0dBm/Area Scan (40.0 mm x 90.0 mm): Measurement Grid: 10.0 mm x 15.0 mm
SAR (1g) = 2.04 W/kg; SAR (10g) = 1.05 W/kg;

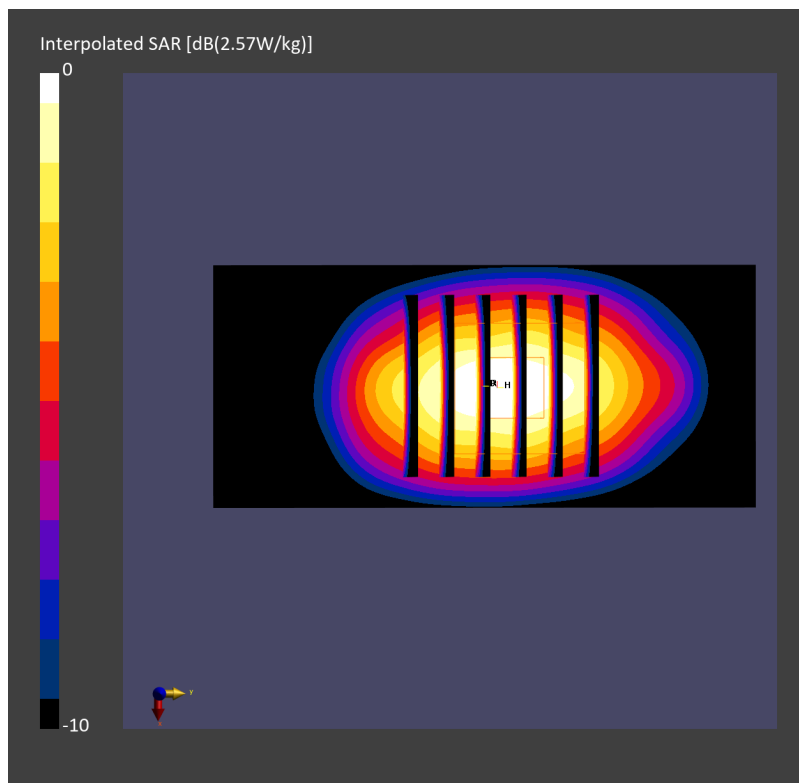
Pin=17.0dBm/Zoom Scan (30.0 mm x 30.0 mm x 30.0 mm): Measurement Grid: 6.0 mm x 6.0 mm x 1.5 mm

Power Drift = 0.01 dB

SAR (1g) = 2.05 W/kg; SAR (8g) = 1.17 W/kg; SAR (10g) = 1.08 W/kg

Smallest distance from peaks to all points 3 dB below = 9.6 mm

Ratio of SAR at M2 to SAR at M1 = 81.0 %



System Check_Head_2300MHz

DUT: D2300V2 - SN1088

Communication System: CW; Frequency: 2300.000 MHz; Duty Cycle: 1:1

Medium: HSL_2300_230509 Medium parameters used: $f=2300.000$ MHz; $\sigma=1.60$ S/m; $\epsilon_r=39.7$

Ambient Temperature: 23.3°C; Liquid Temperature: 22.3°C

DASY6 Configuration:

- Probe: EX3DV4 - SN7439; ConvF(7.66, 7.66, 7.66); Calibrated: 2023-02-21
- Sensor-Surface: 1.4 mm
- Electronics: DAE4 Sn854; Calibrated: 2022-08-24
- Phantom: Twin-SAM V5.0 (30deg probe tilt); Serial: 1884; Section: Flat
- Measurement Software: 16.2.4.2524
- UID: CW, 0--

Pin=100mW/Area Scan (40.0 mm x 80.0 mm): Measurement Grid: 10.0 mm x 10.0 mm

SAR (1g) = 4.85 W/kg; SAR (10g) = 2.39 W/kg;

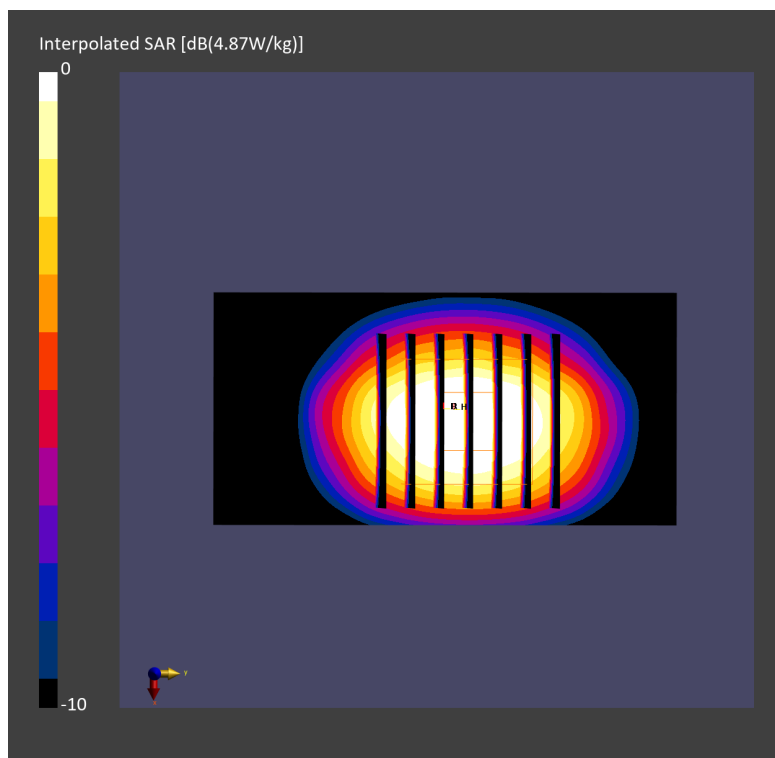
Pin=100mW/Zoom Scan (30.0 mm x 30.0 mm x 30.0 mm): Measurement Grid: 5.0 mm x 5.0 mm x 1.5 mm

Power Drift = 0.01 dB

SAR (1g) = 4.87 W/kg; SAR (8g) = 2.59 W/kg; SAR (10g) = 2.36 W/kg

Smallest distance from peaks to all points 3 dB below = 9.0 mm

Ratio of SAR at M2 to SAR at M1 = 79.8 %



System Check_Head_2300MHz

DUT: D2300V2 - SN1088

Communication System: CW; Frequency: 2300.000 MHz; Duty Cycle: 1:1

Medium: HSL_2300_230510 Medium parameters used: $f = 2300.000$ MHz; $\sigma = 1.64$ S/m; $\epsilon_r = 40.5$

Ambient Temperature: 23.5°C; Liquid Temperature: 22.5°C

DASY6 Configuration:

- Probe: EX3DV4 - SN7439; ConvF(7.66, 7.66, 7.66); Calibrated: 2023-02-21
- Sensor-Surface: 1.4 mm
- Electronics: DAE4 Sn854; Calibrated: 2022-08-24
- Phantom: Twin-SAM V5.0 (30deg probe tilt); Serial: 1884; Section: Flat
- Measurement Software: 16.2.4.2524
- UID: CW, 0--

Pin=100mW/Area Scan (40.0 mm x 80.0 mm): Measurement Grid: 10.0 mm x 10.0 mm

SAR (1g) = 4.86 W/kg; SAR (10g) = 2.39 W/kg;

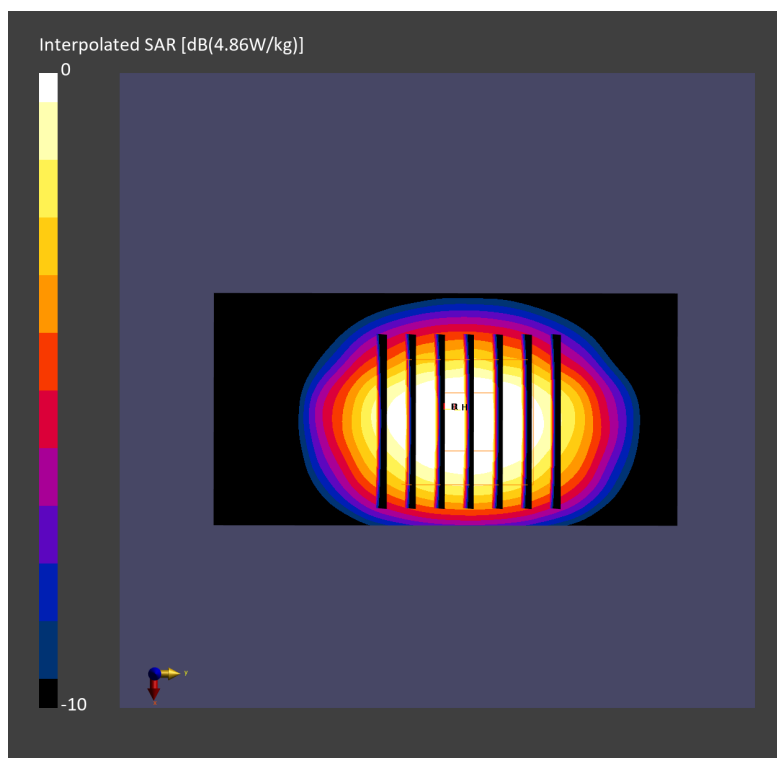
Pin=100mW/Zoom Scan (30.0 mm x 30.0 mm x 30.0 mm): Measurement Grid: 5.0 mm x 5.0 mm x 1.5 mm

Power Drift = -0.14 dB

SAR (1g) = 4.86 W/kg; SAR (8g) = 2.58 W/kg; SAR (10g) = 2.35 W/kg

Smallest distance from peaks to all points 3 dB below = 9.0 mm

Ratio of SAR at M2 to SAR at M1 = 79.9 %



System Check_Head_2300MHz

DUT: D2300V2 - SN1088

Communication System: CW; Frequency: 2300.000 MHz; Duty Cycle: 1:1
Medium: HSL_2300_230514 Medium parameters used: $f=2300.000$ MHz; $\sigma=1.65$ S/m; $\epsilon_r=39.0$
Ambient Temperature: 23.7°C; Liquid Temperature: 22.7°C

DASY6 Configuration:

- Probe: EX3DV4 - SN3925; ConvF(8.34, 8.34, 8.34); Calibrated: 2023-04-25
- Sensor-Surface: 1.4 mm
- Electronics: DAE4 Sn853; Calibrated: 2022-07-20
- Phantom: Twin-SAM V5.0 (30deg probe tilt); Serial: 1719; Section: Flat
- Measurement Software: 16.2.4.2524
- UID: CW, 0--

Pin=17.0dBm/Area Scan (40.0 mm x 80.0 mm): Measurement Grid: 10.0 mm x 10.0 mm
SAR (1g) = 2.32 W/kg; SAR (10g) = 1.09 W/kg;

Pin=17.0dBm/Zoom Scan (30.0 mm x 30.0 mm x 30.0 mm): Measurement Grid: 5.0 mm x 5.0 mm x 1.5 mm

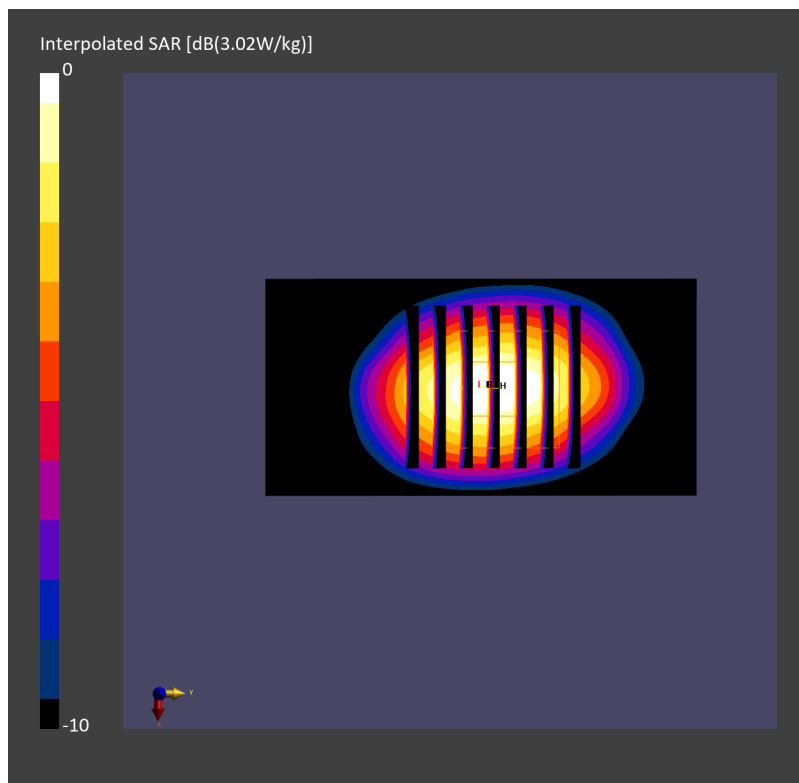
Power Drift = -0.00 dB

SAR (1g) = 2.34 W/kg; SAR (8g) = 1.25 W/kg; SAR (10g) = 1.13 W/kg

Smallest distance from peaks to all points 3 dB below = 9.0 mm

Ratio of SAR at M2 to SAR at M1 = 80.5 %

psAPD (1.0cm², sq) = N/A [W/m²]; psAPD (4.0cm², sq) = N/A [W/m²]



System Check_Head_2600MHz

DUT: D2600V2 - SN1089

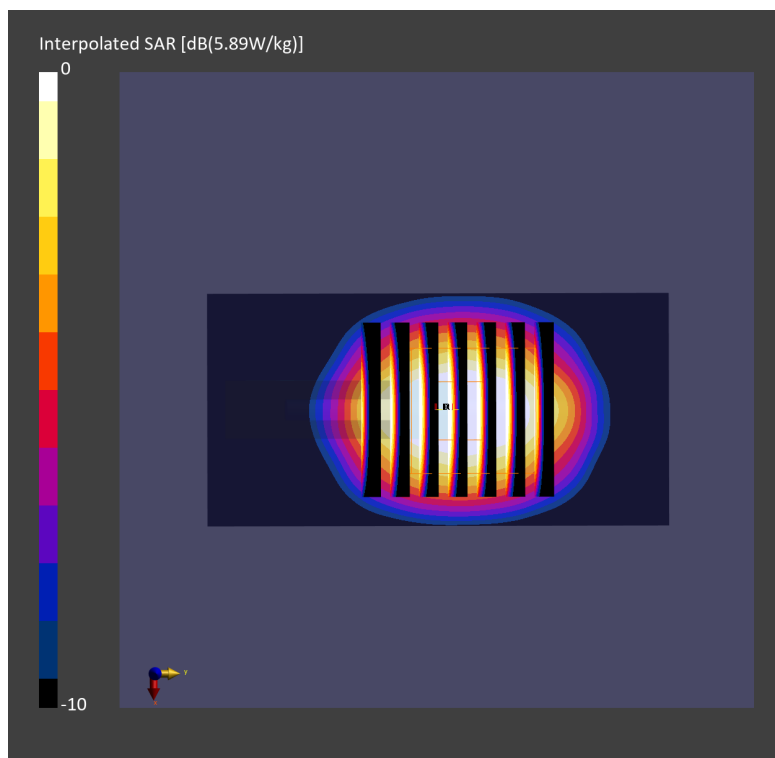
Communication System: CW; Frequency: 2600.000 MHz; Duty Cycle: 1:1
Medium: HSL_2600_230506 Medium parameters used: $f=2600.000$ MHz; $\sigma=1.93$ S/m; $\epsilon_r=39.0$
Ambient Temperature: 23.6°C; Liquid Temperature: 22.6°C

DASY6 Configuration:

- Probe: EX3DV4 - SN7439; ConvF(7.32, 7.32, 7.32); Calibrated: 2023-02-21
- Sensor-Surface: 1.4 mm
- Electronics: DAE4 Sn854; Calibrated: 2022-08-24
- Phantom: Twin-SAM V5.0 (30deg probe tilt); Serial: 1884; Section: Flat
- Measurement Software: 16.2.4.2524
- UID: CW, 0--

Pin=100mW/Area Scan (40.0 mm x 80.0 mm): Measurement Grid: 10.0 mm x 10.0 mm
SAR (1g) = 5.90 W/kg; SAR (10g) = 2.63 W/kg;

Pin=100mW/Zoom Scan (30.0 mm x 30.0 mm x 30.0 mm): Measurement Grid: 5.0 mm x 5.0 mm x 1.5 mm
Power Drift = 0.01 dB
SAR (1g) = 5.89 W/kg; SAR (8g) = 2.91 W/kg; SAR (10g) = 2.63 W/kg
Smallest distance from peaks to all points 3 dB below = 9.0 mm
Ratio of SAR at M2 to SAR at M1 = 77.7 %



System Check_Head_2600MHz

DUT: D2600V2 - SN1089

Communication System: CW; Frequency: 2600.000 MHz; Duty Cycle: 1:1

Medium: HSL_2600_230507 Medium parameters used: $f = 2600.000$ MHz; $\sigma = 1.97$ S/m; $\epsilon_r = 39.5$

Ambient Temperature: 23.6°C; Liquid Temperature: 22.6°C

DASY6 Configuration:

- Probe: EX3DV4 - SN7439; ConvF(7.32, 7.32, 7.32); Calibrated: 2023-02-21
- Sensor-Surface: 1.4 mm
- Electronics: DAE4 Sn854; Calibrated: 2022-08-24
- Phantom: Twin-SAM V5.0 (30deg probe tilt); Serial: 1884; Section: Flat
- Measurement Software: 16.2.4.2524
- UID: CW, 0--

Pin=100mW/Area Scan (40.0 mm x 80.0 mm): Measurement Grid: 10.0 mm x 10.0 mm

SAR (1g) = 5.72 W/kg; SAR (10g) = 2.55 W/kg;

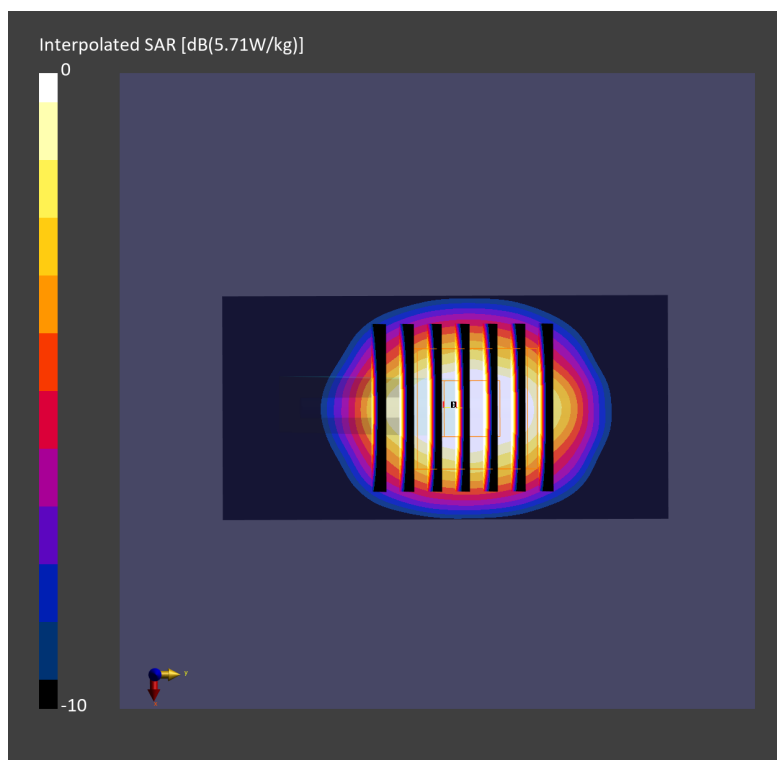
Pin=100mW/Zoom Scan (30.0 mm x 30.0 mm x 30.0 mm): Measurement Grid: 5.0 mm x 5.0 mm x 1.5 mm

Power Drift = 0.01 dB

SAR (1g) = 5.71 W/kg; SAR (8g) = 2.83 W/kg; SAR (10g) = 2.55 W/kg

Smallest distance from peaks to all points 3 dB below = 9.0 mm

Ratio of SAR at M2 to SAR at M1 = 77.7 %



System Check_Head_2600MHz

DUT: D2600V2 - SN1089

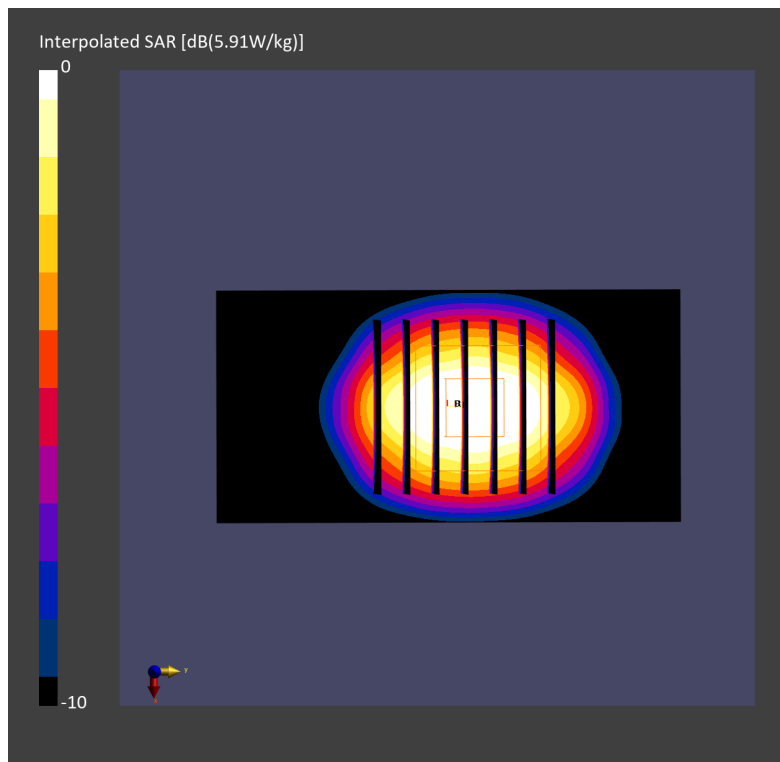
Communication System: CW; Frequency: 2600.000 MHz; Duty Cycle: 1:1
Medium: HSL_2600_230511 Medium parameters used: $f = 2600.000$ MHz; $\sigma = 1.95$ S/m; $\epsilon_r = 39.4$
Ambient Temperature: 23.2°C; Liquid Temperature: 22.2°C

DASY6 Configuration:

- Probe: EX3DV4 - SN7439; ConvF(7.32, 7.32, 7.32); Calibrated: 2023-02-21
- Sensor-Surface: 1.4 mm
- Electronics: DAE4 Sn854; Calibrated: 2022-08-24
- Phantom: Twin-SAM V5.0 (30deg probe tilt); Serial: 1884; Section: Flat
- Measurement Software: 16.2.4.2524
- UID: CW, 0--

Pin=100mW/Area Scan (40.0 mm x 80.0 mm): Measurement Grid: 10.0 mm x 10.0 mm
SAR (1g) = 5.92 W/kg; SAR (10g) = 2.64 W/kg;

Pin=100mW/Zoom Scan (30.0 mm x 30.0 mm x 30.0 mm): Measurement Grid: 5.0 mm x 5.0 mm x 1.5 mm
Power Drift = 0.02 dB
SAR (1g) = 5.91 W/kg; SAR (8g) = 2.92 W/kg; SAR (10g) = 2.63 W/kg
Smallest distance from peaks to all points 3 dB below = 9.0 mm
Ratio of SAR at M2 to SAR at M1 = 77.8 %



System Check_Head_2600MHz

DUT: D2600V2 - SN1089

Communication System: CW; Frequency: 2600.000 MHz; Duty Cycle: 1:1

Medium: HSL_2600_230512 Medium parameters used: $f = 2600.000$ MHz; $\sigma = 1.97$ S/m; $\epsilon_r = 39.2$

Ambient Temperature: 23.5°C; Liquid Temperature: 22.5°C

DASY6 Configuration:

- Probe: EX3DV4 - SN7439; ConvF(7.32, 7.32, 7.32); Calibrated: 2023-02-21
- Sensor-Surface: 1.4 mm
- Electronics: DAE4 Sn854; Calibrated: 2022-08-24
- Phantom: Twin-SAM V5.0 (30deg probe tilt); Serial: 1884; Section: Flat
- Measurement Software: 16.2.4.2524
- UID: CW, 0--

Pin=100mW/Area Scan (40.0 mm x 80.0 mm): Measurement Grid: 10.0 mm x 10.0 mm

SAR (1g) = 5.86 W/kg; SAR (10g) = 2.61 W/kg;

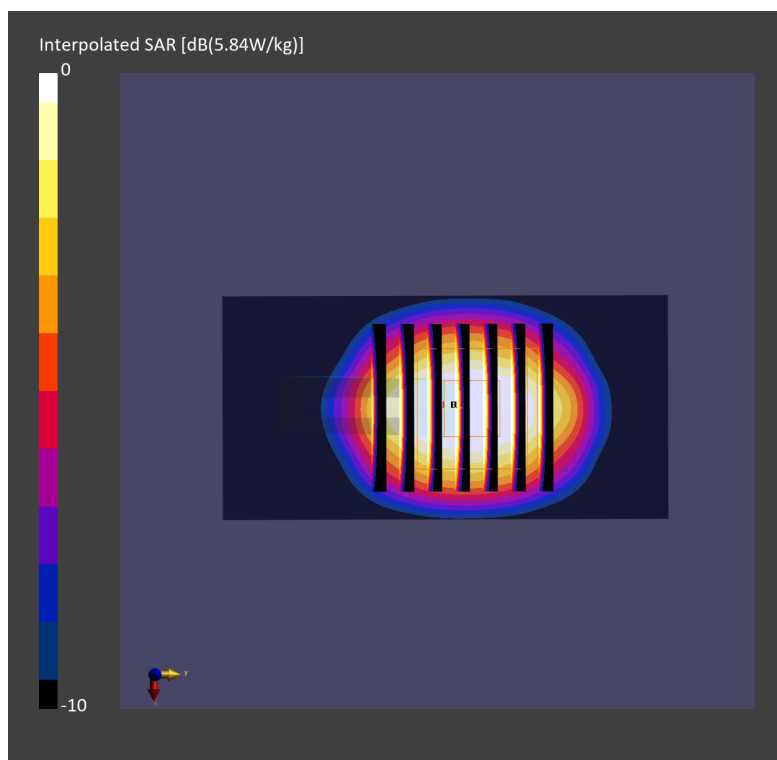
Pin=100mW/Zoom Scan (30.0 mm x 30.0 mm x 30.0 mm): Measurement Grid: 5.0 mm x 5.0 mm x 1.5 mm

Power Drift = -0.13 dB

SAR (1g) = 5.84 W/kg; SAR (8g) = 2.89 W/kg; SAR (10g) = 2.60 W/kg

Smallest distance from peaks to all points 3 dB below = 9.0 mm

Ratio of SAR at M2 to SAR at M1 = 77.8 %



System Check_Head_2600MHz

DUT: D2600V2 - SN1008

Communication System: CW; Frequency: 2600.000 MHz; Duty Cycle: 1:1
Medium: HSL_2600_230514 Medium parameters used: $f=2600.000$ MHz; $\sigma=2.00$ S/m; $\epsilon_r=37.9$
Ambient Temperature: 23.7°C; Liquid Temperature: 22.7°C

DASY6 Configuration:

- Probe: EX3DV4 - SN3925; ConvF(7.78, 7.78, 7.78); Calibrated: 2023-04-25
- Sensor-Surface: 1.4 mm
- Electronics: DAE4 Sn853; Calibrated: 2022-07-20
- Phantom: Twin-SAM V5.0 (30deg probe tilt); Serial: 1719; Section: Flat
- Measurement Software: 16.2.4.2524
- UID: CW, 0--

Pin=17.0dBm/Area Scan (40.0 mm x 80.0 mm): Measurement Grid: 10.0 mm x 10.0 mm
SAR (1g) = 2.75 W/kg; SAR (10g) = 1.24 W/kg;

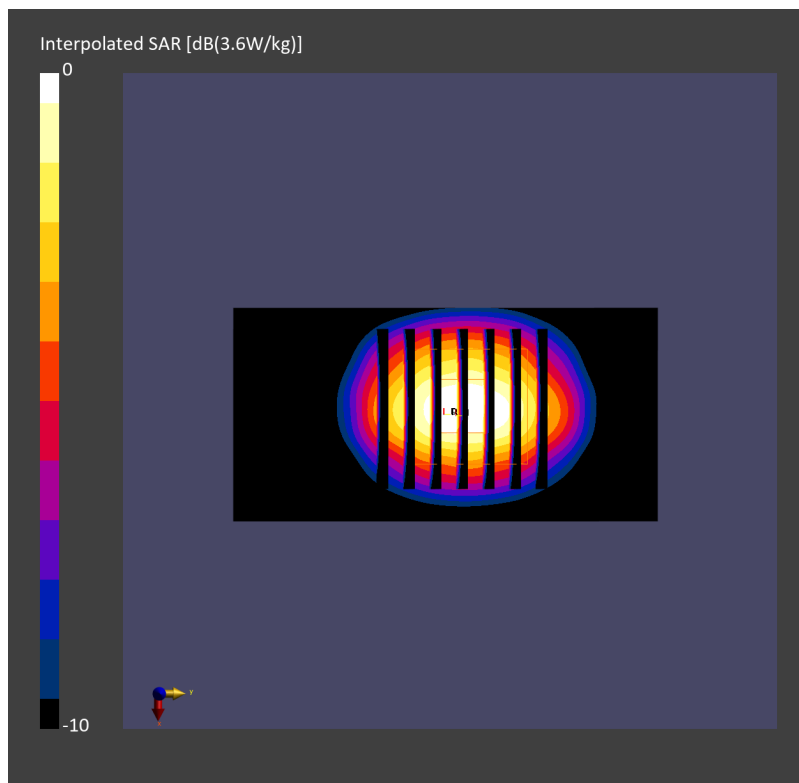
Pin=17.0dBm/Zoom Scan (30.0 mm x 30.0 mm x 30.0 mm): Measurement Grid: 5.0 mm x 5.0 mm x 1.5 mm

Power Drift = 0.02 dB

SAR (1g) = 2.85 W/kg; SAR (8g) = 1.44 W/kg; SAR (10g) = 1.30 W/kg

Smallest distance from peaks to all points 3 dB below = 9.0 mm

Ratio of SAR at M2 to SAR at M1 = 77.5 %



System Check_Head_2600MHz

DUT: D2600V2 - SN1089

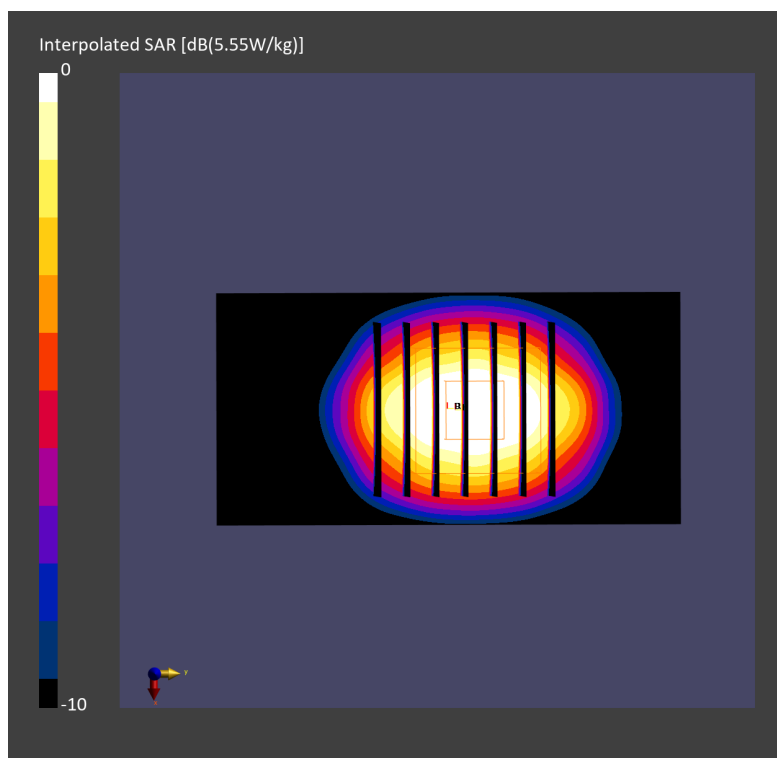
Communication System: CW; Frequency: 2600.000 MHz; Duty Cycle: 1:1
Medium: HSL_2600_230515 Medium parameters used: $f=2600.000$ MHz; $\sigma=2.02$ S/m; $\epsilon_r=40.0$
Ambient Temperature: 23.4°C; Liquid Temperature: 22.4°C

DASY6 Configuration:

- Probe: EX3DV4 - SN7439; ConvF(7.32, 7.32, 7.32); Calibrated: 2023-02-21
- Sensor-Surface: 1.4 mm
- Electronics: DAE4 Sn854; Calibrated: 2022-08-24
- Phantom: Twin-SAM V5.0 (30deg probe tilt); Serial: 1884; Section: Flat
- Measurement Software: 16.2.4.2524
- UID: CW, 0--

Pin=100mW/Area Scan (40.0 mm x 80.0 mm): Measurement Grid: 10.0 mm x 10.0 mm
SAR (1g) = 5.57 W/kg; SAR (10g) = 2.48 W/kg;

Pin=100mW/Zoom Scan (30.0 mm x 30.0 mm x 30.0 mm): Measurement Grid: 5.0 mm x 5.0 mm x 1.5 mm
Power Drift = -0.00 dB
SAR (1g) = 5.55 W/kg; SAR (8g) = 2.74 W/kg; SAR (10g) = 2.47 W/kg
Smallest distance from peaks to all points 3 dB below = 8.6 mm
Ratio of SAR at M2 to SAR at M1 = 77.7 %



System Check_Head_2600MHz

DUT: D2600V2 - SN1089

Communication System: CW; Frequency: 2600.000 MHz; Duty Cycle: 1:1

Medium: HSL_2600_230516 Medium parameters used: $f=2600.000$ MHz; $\sigma=1.97$ S/m; $\epsilon_r=39.6$

Ambient Temperature: 23.7°C; Liquid Temperature: 22.7°C

DASY6 Configuration:

- Probe: EX3DV4 - SN7439; ConvF(7.32, 7.32, 7.32); Calibrated: 2023-02-21
- Sensor-Surface: 1.4 mm
- Electronics: DAE4 Sn854; Calibrated: 2022-08-24
- Phantom: Twin-SAM V5.0 (30deg probe tilt); Serial: 1884; Section: Flat
- Measurement Software: 16.2.4.2524
- UID: CW, 0--

Pin=100mW/Area Scan (40.0 mm x 80.0 mm): Measurement Grid: 10.0 mm x 10.0 mm

SAR (1g) = 5.15 W/kg; SAR (10g) = 2.30 W/kg;

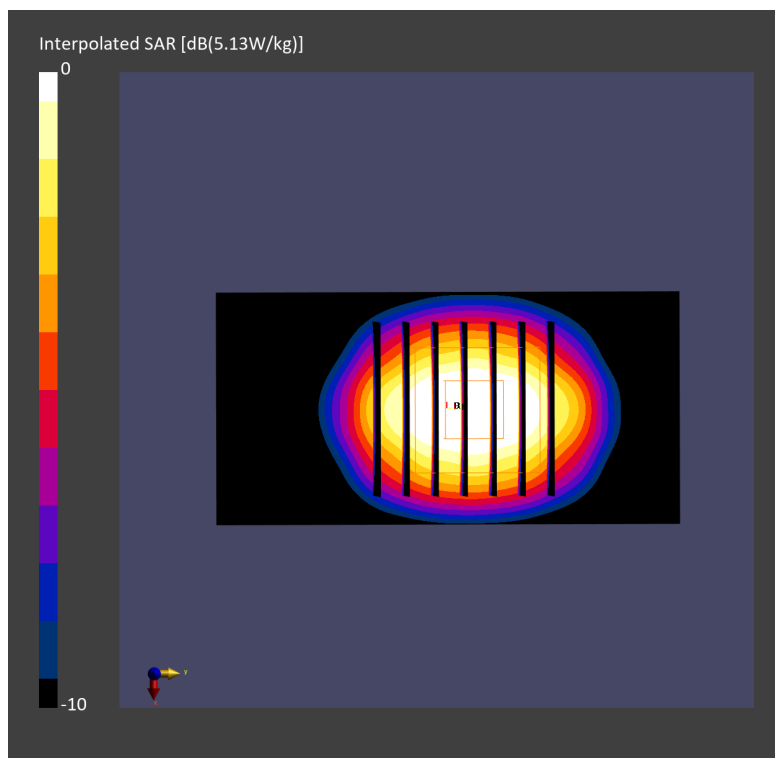
Pin=100mW/Zoom Scan (30.0 mm x 30.0 mm x 30.0 mm): Measurement Grid: 5.0 mm x 5.0 mm x 1.5 mm

Power Drift = 0.17 dB

SAR (1g) = 5.13 W/kg; SAR (8g) = 2.54 W/kg; SAR (10g) = 2.28 W/kg

Smallest distance from peaks to all points 3 dB below = 8.6 mm

Ratio of SAR at M2 to SAR at M1 = 77.8 %



System Check_Head_2600MHz

DUT: D2600V2 - SN1089

Communication System: CW; Frequency: 2600.000 MHz; Duty Cycle: 1:1

Medium: HSL_2600_230517 Medium parameters used: $f = 2600.000$ MHz; $\sigma = 1.92$ S/m; $\epsilon_r = 38.6$

Ambient Temperature: 23.1°C; Liquid Temperature: 22.1°C

DASY6 Configuration:

- Probe: EX3DV4 - SN7439; ConvF(7.32, 7.32, 7.32); Calibrated: 2023-02-21
- Sensor-Surface: 1.4 mm
- Electronics: DAE4 Sn854; Calibrated: 2022-08-24
- Phantom: Twin-SAM V5.0 (30deg probe tilt); Serial: 1884; Section: Flat
- Measurement Software: 16.2.4.2524
- UID: CW, 0--

Pin=100mW/Area Scan (40.0 mm x 80.0 mm): Measurement Grid: 10.0 mm x 10.0 mm

SAR (1g) = 5.44 W/kg; SAR (10g) = 2.43 W/kg;

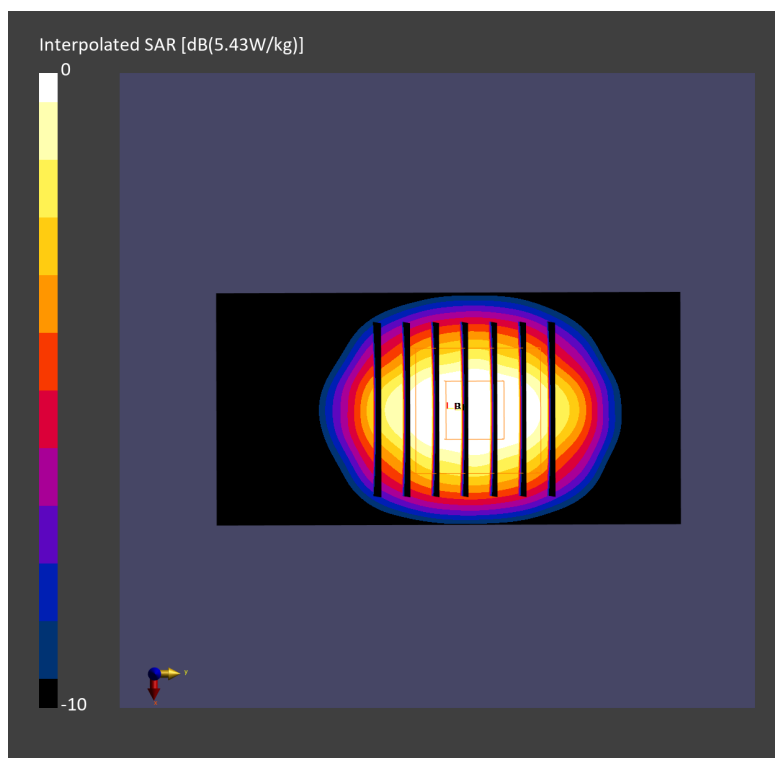
Pin=100mW/Zoom Scan (30.0 mm x 30.0 mm x 30.0 mm): Measurement Grid: 5.0 mm x 5.0 mm x 1.5 mm

Power Drift = -0.06 dB

SAR (1g) = 5.43 W/kg; SAR (8g) = 2.68 W/kg; SAR (10g) = 2.42 W/kg

Smallest distance from peaks to all points 3 dB below = 8.6 mm

Ratio of SAR at M2 to SAR at M1 = 77.7 %



System Check_Head_2600MHz

DUT: D2600V2 - SN1089

Communication System: CW; Frequency: 2600.000 MHz; Duty Cycle: 1:1

Medium: HSL_2600_230518 Medium parameters used: $f=2600.000$ MHz; $\sigma=1.95$ S/m; $\epsilon_r=39.3$

Ambient Temperature: 23.2°C; Liquid Temperature: 22.2°C

DASY6 Configuration:

- Probe: EX3DV4 - SN7439; ConvF(7.32, 7.32, 7.32); Calibrated: 2023-02-21
- Sensor-Surface: 1.4 mm
- Electronics: DAE4 Sn854; Calibrated: 2022-08-24
- Phantom: Twin-SAM V5.0 (30deg probe tilt); Serial: 1884; Section: Flat
- Measurement Software: 16.2.4.2524
- UID: CW, 0--

Pin=100mW/Area Scan (40.0 mm x 80.0 mm): Measurement Grid: 10.0 mm x 10.0 mm

SAR (1g) = 5.56 W/kg; SAR (10g) = 2.48 W/kg;

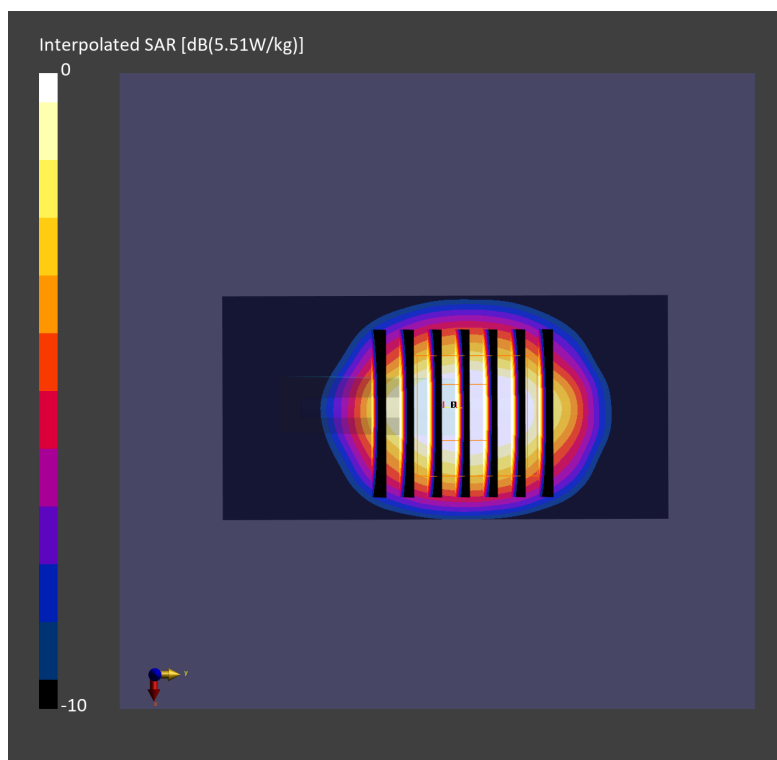
Pin=100mW/Zoom Scan (30.0 mm x 30.0 mm x 30.0 mm): Measurement Grid: 5.0 mm x 5.0 mm x 1.5 mm

Power Drift = 0.11 dB

SAR (1g) = 5.51 W/kg; SAR (8g) = 2.73 W/kg; SAR (10g) = 2.46 W/kg

Smallest distance from peaks to all points 3 dB below = 9.0 mm

Ratio of SAR at M2 to SAR at M1 = 77.3 %



System Check_Head_3500MHz

DUT: D3500V2 - SN1036

Communication System: CW; Frequency: 3500.000 MHz; Duty Cycle: 1:1
Medium: HSL_3500_230514 Medium parameters used: $f=3500.000$ MHz; $\sigma=2.91$ S/m; $\epsilon_r=38.1$
Ambient Temperature: 23.7°C; Liquid Temperature: 22.7°C

DASY6 Configuration:

- Probe: EX3DV4 - SN3925; ConvF(7.05, 7.05, 7.05); Calibrated: 2023-04-25
- Sensor-Surface: 1.4 mm
- Electronics: DAE4 Sn853; Calibrated: 2022-07-20
- Phantom: Twin-SAM V5.0 (30deg probe tilt); Serial: 1719; Section: Flat
- Measurement Software: 16.2.4.2524
- UID: CW, 0--

Pin=17.0dBm/Area Scan (40.0 mm x 80.0 mm): Measurement Grid: 10.0 mm x 10.0 mm
SAR (1g) = 3.43 W/kg; SAR (10g) = 1.30 W/kg;

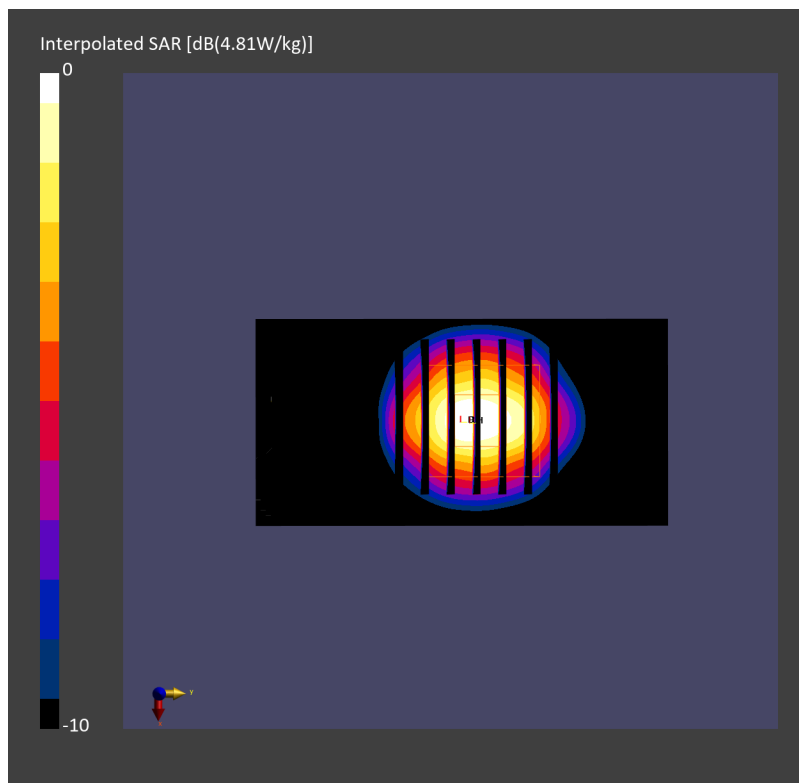
Pin=17.0dBm/Zoom Scan (28.0 mm x 28.0 mm x 28.0 mm): Measurement Grid: 5.0 mm x 5.0 mm x 1.4 mm

Power Drift = -0.00 dB

SAR (1g) = 3.47 W/kg; SAR (8g) = 1.52 W/kg; SAR (10g) = 1.35 W/kg

Smallest distance from peaks to all points 3 dB below = 8.0 mm

Ratio of SAR at M2 to SAR at M1 = 77.6 %



System Check_Head_3500MHz

DUT: D3500V2 - SN1036

Communication System: CW; Frequency: 3500.000 MHz; Duty Cycle: 1:1

Medium: HSL_3500_230529 Medium parameters used: $f=3500.000$ MHz; $\sigma=2.92$ S/m; $\epsilon_r=38.0$

Ambient Temperature: 23.7°C; Liquid Temperature: 22.7°C

DASY6 Configuration:

- Probe: EX3DV4 - SN3642; ConvF(6.66, 6.66, 6.66); Calibrated: 2023-04-26
- Sensor-Surface: 1.4 mm
- Electronics: DAE4 Sn1694; Calibrated: 2022-11-18
- Phantom: Twin-SAM V8.0 (30deg probe tilt); Serial: 2055; Section: Flat
- Measurement Software: 16.2.4.2524
- UID: CW, 0--

Pin=20.0dBm/Area Scan (40.0 mm x 80.0 mm): Measurement Grid: 10.0 mm x 10.0 mm
SAR (1g) = 6.93 W/kg; SAR (10g) = 2.65 W/kg;

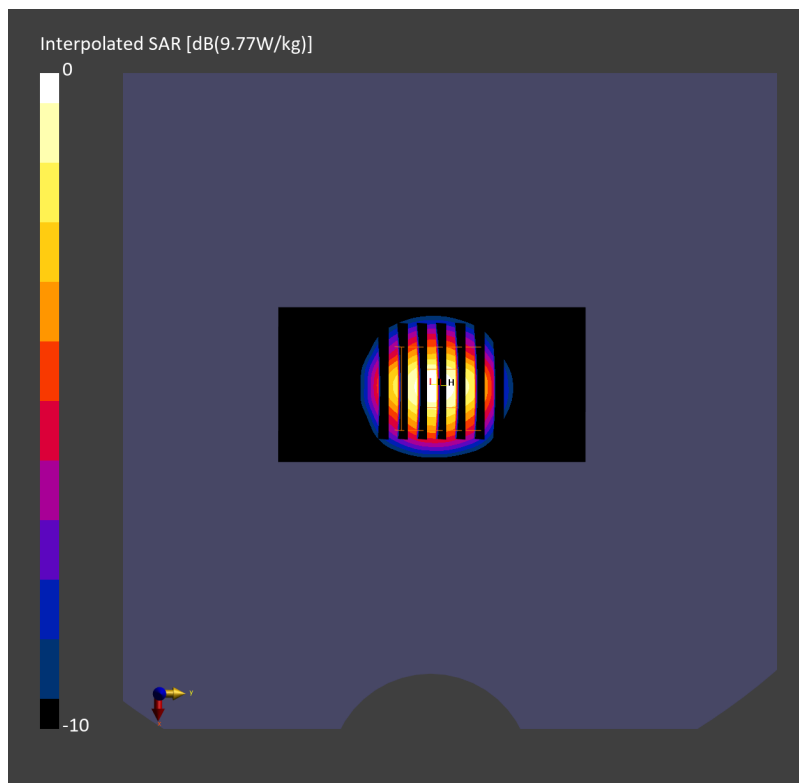
Pin=20.0dBm/Zoom Scan (28.0 mm x 28.0 mm x 28.0 mm): Measurement Grid: 5.0 mm x 5.0 mm x 1.4 mm

Power Drift = -0.03 dB

SAR (1g) = 6.83 W/kg; SAR (8g) = 2.98 W/kg; SAR (10g) = 2.64 W/kg

Smallest distance from peaks to all points 3 dB below = 9.0 mm

Ratio of SAR at M2 to SAR at M1 = 76.5 %



System Check_Head_3500MHz

DUT: D3500V2 - SN1036

Communication System: CW; Frequency: 3500.000 MHz; Duty Cycle: 1:1
Medium: HSL_3500_230530 Medium parameters used: $f=3500.000$ MHz; $\sigma=2.96$ S/m; $\epsilon_r=38.1$
Ambient Temperature: 23.8°C; Liquid Temperature: 22.8°C

DASY6 Configuration:

- Probe: EX3DV4 - SN3642; ConvF(6.66, 6.66, 6.66); Calibrated: 2023-04-26
- Sensor-Surface: 1.4 mm
- Electronics: DAE4 Sn1694; Calibrated: 2022-11-18
- Phantom: Twin-SAM V8.0 (30deg probe tilt); Serial: 2055; Section: Flat
- Measurement Software: 16.2.4.2524
- UID: CW, 0--

Pin=20.0dBm/Area Scan (40.0 mm x 80.0 mm): Measurement Grid: 10.0 mm x 10.0 mm
SAR (1g) = 6.99 W/kg; SAR (10g) = 2.67 W/kg;

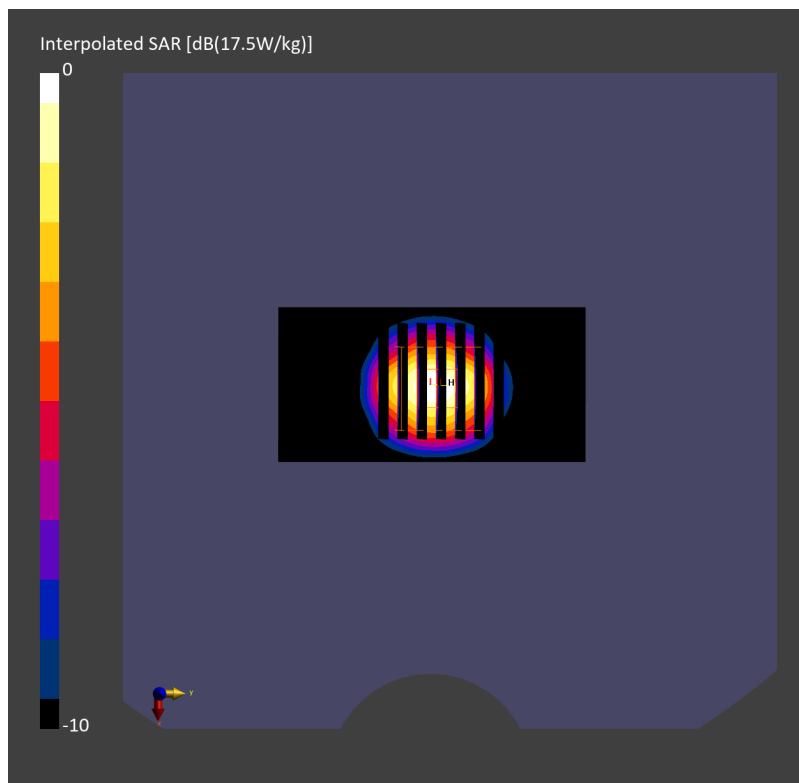
Pin=20.0dBm/Zoom Scan (28.0 mm x 28.0 mm x 28.0 mm): Measurement Grid: 5.0 mm x 5.0 mm x 1.4 mm

Power Drift = -0.00 dB

SAR (1g) = 7.02 W/kg; SAR (8g) = 3.06 W/kg; SAR (10g) = 2.71 W/kg

Smallest distance from peaks to all points 3 dB below = 9.0 mm

Ratio of SAR at M2 to SAR at M1 = 76.5 %



System Check_Head_3500MHz

DUT: D3500V2 - SN1036

Communication System: CW; Frequency: 3500.000 MHz; Duty Cycle: 1:1

Medium: HSL_3500_230531 Medium parameters used: $f=3500.000$ MHz; $\sigma=2.99$ S/m; $\epsilon_r=38.4$

Ambient Temperature: 23.4°C; Liquid Temperature: 22.4°C

DASY6 Configuration:

- Probe: EX3DV4 - SN3642; ConvF(6.66, 6.66, 6.66); Calibrated: 2023-04-26
- Sensor-Surface: 1.4 mm
- Electronics: DAE4 Sn1694; Calibrated: 2022-11-18
- Phantom: Twin-SAM V8.0 (30deg probe tilt); Serial: 2055; Section: Flat
- Measurement Software: 16.2.4.2524
- UID: CW, 0--

Pin=20.0dBm/Area Scan (40.0 mm x 80.0 mm): Measurement Grid: 10.0 mm x 10.0 mm
SAR (1g) = 7.06 W/kg; SAR (10g) = 2.70 W/kg;

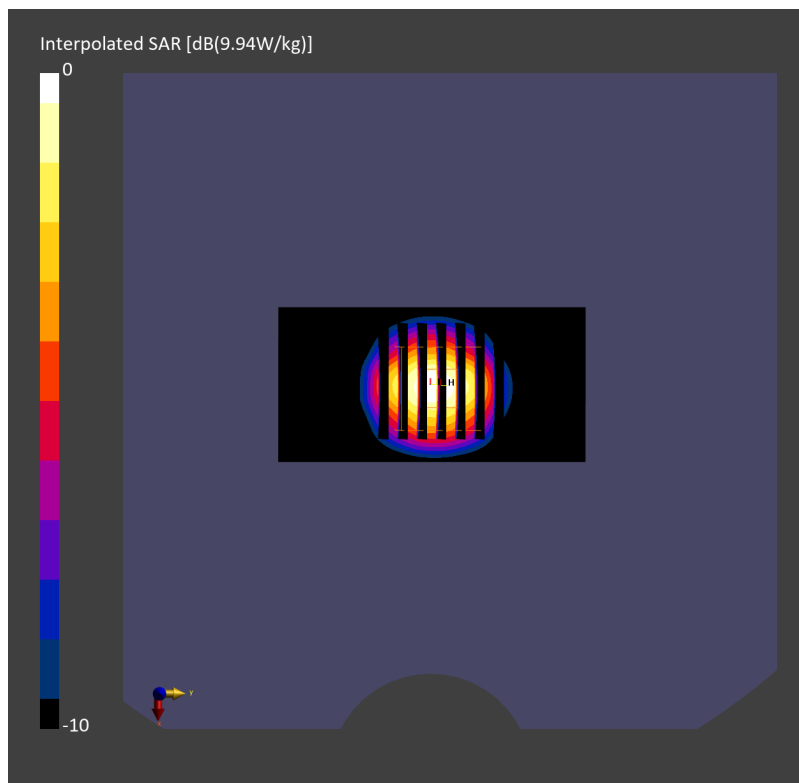
Pin=20.0dBm/Zoom Scan (28.0 mm x 28.0 mm x 28.0 mm): Measurement Grid: 5.0 mm x 5.0 mm x 1.4 mm

Power Drift = -0.02 dB

SAR (1g) = 7.07 W/kg; SAR (8g) = 3.08 W/kg; SAR (10g) = 2.73 W/kg

Smallest distance from peaks to all points 3 dB below = 9.0 mm

Ratio of SAR at M2 to SAR at M1 = 76.5 %



System Check_Head_3500MHz

DUT: D3500V2 - SN1036

Communication System: CW; Frequency: 3500.000 MHz; Duty Cycle: 1:1
Medium: HSL_3500_230601 Medium parameters used: $f=3500.000$ MHz; $\sigma=3.00$ S/m; $\epsilon_r=38.7$
Ambient Temperature: 23.5°C; Liquid Temperature: 22.5°C

DASY6 Configuration:

- Probe: EX3DV4 - SN3642; ConvF(6.66, 6.66, 6.66); Calibrated: 2023-04-26
- Sensor-Surface: 1.4 mm
- Electronics: DAE4 Sn1694; Calibrated: 2022-11-18
- Phantom: Twin-SAM V8.0 (30deg probe tilt); Serial: 2055; Section: Flat
- Measurement Software: 16.2.4.2524
- UID: CW, 0--

Pin=20.0dBm/Area Scan (40.0 mm x 80.0 mm): Measurement Grid: 10.0 mm x 10.0 mm
SAR (1g) = 7.04 W/kg; SAR (10g) = 2.69 W/kg;

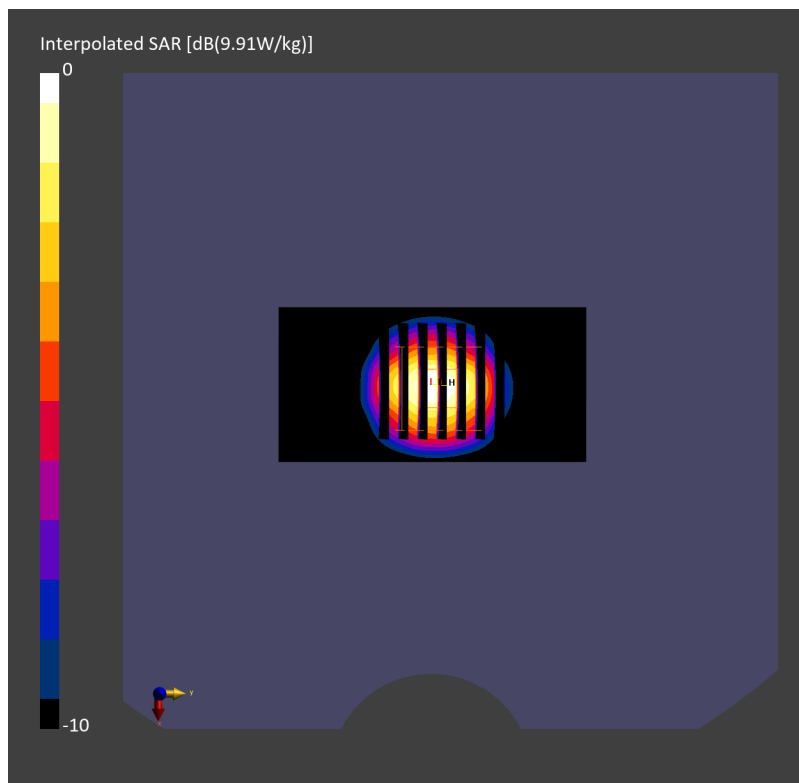
Pin=20.0dBm/Zoom Scan (28.0 mm x 28.0 mm x 28.0 mm): Measurement Grid: 5.0 mm x 5.0 mm x 1.4 mm

Power Drift = -0.00 dB

SAR (1g) = 7.09 W/kg; SAR (8g) = 3.09 W/kg; SAR (10g) = 2.74 W/kg

Smallest distance from peaks to all points 3 dB below = 9.0 mm

Ratio of SAR at M2 to SAR at M1 = 76.6 %



System Check_Head_3700MHz

DUT: D3700V2 - SN1022

Communication System: CW; Frequency: 3700.000 MHz; Duty Cycle: 1:1
Medium: HSL_3700_230514 Medium parameters used: $f=3700.000$ MHz; $\sigma=3.11$ S/m; $\epsilon_r=37.7$
Ambient Temperature: 23.7°C; Liquid Temperature: 22.7°C

DASY6 Configuration:

- Probe: EX3DV4 - SN3925; ConvF(6.91, 6.91, 6.91); Calibrated: 2023-04-25
- Sensor-Surface: 1.4 mm
- Electronics: DAE4 Sn853; Calibrated: 2022-07-20
- Phantom: Twin-SAM V5.0 (30deg probe tilt); Serial: 1719; Section: Flat
- Measurement Software: 16.2.4.2524
- UID: CW, 0--

Pin=17.0dBm/Area Scan (40.0 mm x 80.0 mm): Measurement Grid: 10.0 mm x 10.0 mm
SAR (1g) = 3.36 W/kg; SAR (10g) = 1.26 W/kg;

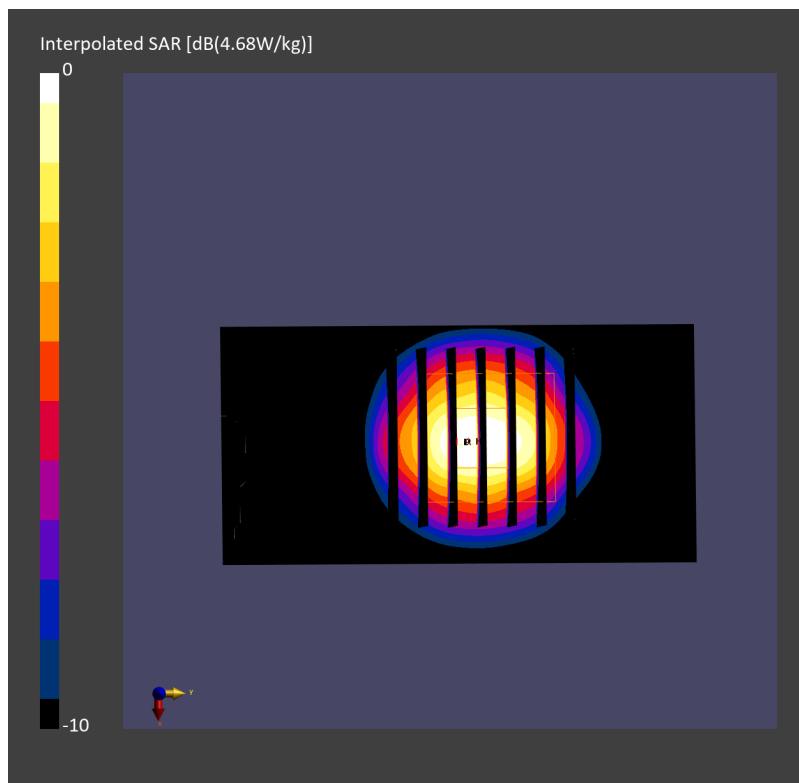
Pin=17.0dBm/Zoom Scan (28.0 mm x 28.0 mm x 28.0 mm): Measurement Grid: 5.0 mm x 5.0 mm x 1.4 mm

Power Drift = 0.01 dB

SAR (1g) = 3.47 W/kg; SAR (8g) = 1.50 W/kg; SAR (10g) = 1.32 W/kg

Smallest distance from peaks to all points 3 dB below = 8.1 mm

Ratio of SAR at M2 to SAR at M1 = 76.5 %



System Check_Head_3700MHz

DUT: D3700V2 - SN1022

Communication System: CW; Frequency: 3700.000 MHz; Duty Cycle: 1:1

Medium: HSL_3700_230529 Medium parameters used: $f=3700.000$ MHz; $\sigma=3.12$ S/m; $\epsilon_r=37.8$

Ambient Temperature: 23.7°C; Liquid Temperature: 22.7°C

DASY6 Configuration:

- Probe: EX3DV4 - SN3642; ConvF(6.42, 6.42, 6.42); Calibrated: 2023-04-26
- Sensor-Surface: 1.4 mm
- Electronics: DAE4 Sn1694; Calibrated: 2022-11-18
- Phantom: Twin-SAM V8.0 (30deg probe tilt); Serial: 2055; Section: Flat
- Measurement Software: 16.2.4.2524
- UID: CW, 0--

Pin=20.0dBm/Area Scan (40.0 mm x 80.0 mm): Measurement Grid: 10.0 mm x 10.0 mm
SAR (1g) = 6.57 W/kg; SAR (10g) = 2.48 W/kg;

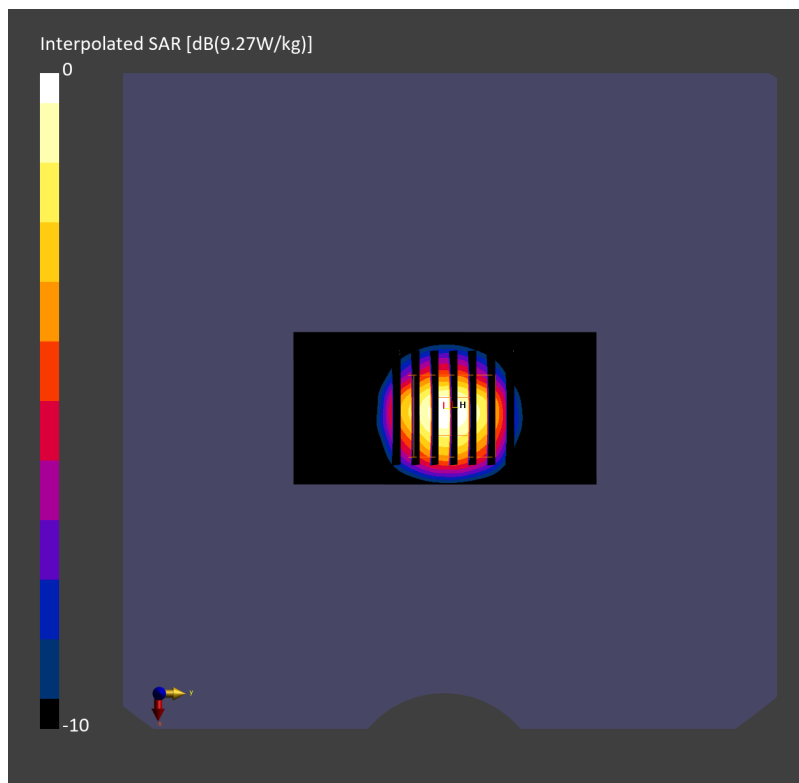
Pin=20.0dBm/Zoom Scan (28.0 mm x 28.0 mm x 28.0 mm): Measurement Grid: 5.0 mm x 5.0 mm x 1.4 mm

Power Drift = 0.01 dB

SAR (1g) = 6.68 W/kg; SAR (8g) = 2.85 W/kg; SAR (10g) = 2.51 W/kg

Smallest distance from peaks to all points 3 dB below = 9.0 mm

Ratio of SAR at M2 to SAR at M1 = 75.7 %



System Check_Head_3700MHz

DUT: D3700V2 - SN1022

Communication System: CW; Frequency: 3700.000 MHz; Duty Cycle: 1:1
Medium: HSL_3700_230530 Medium parameters used: $f=3700.000$ MHz; $\sigma=3.20$ S/m; $\epsilon_r=37.5$
Ambient Temperature: 23.8°C; Liquid Temperature: 22.8°C

DASY6 Configuration:

- Probe: EX3DV4 - SN3642; ConvF(6.42, 6.42, 6.42); Calibrated: 2023-04-26
- Sensor-Surface: 1.4 mm
- Electronics: DAE4 Sn1694; Calibrated: 2022-11-18
- Phantom: Twin-SAM V8.0 (30deg probe tilt); Serial: 2055; Section: Flat
- Measurement Software: 16.2.4.2524
- UID: CW, 0--

Pin=20.0dBm/Area Scan (40.0 mm x 80.0 mm): Measurement Grid: 10.0 mm x 10.0 mm
SAR (1g) = 6.67 W/kg; SAR (10g) = 2.52 W/kg;

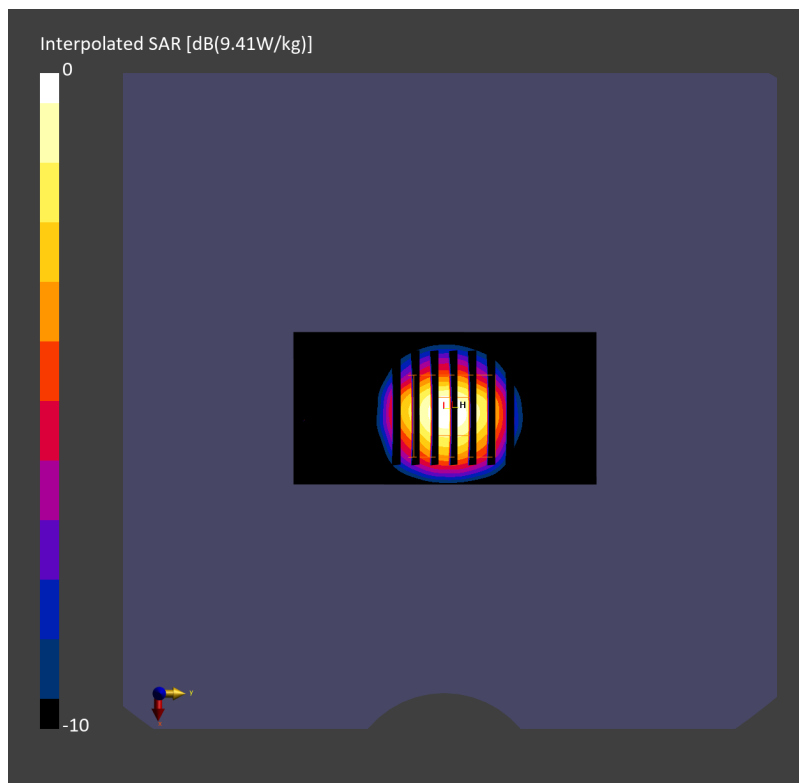
Pin=20.0dBm/Zoom Scan (28.0 mm x 28.0 mm x 28.0 mm): Measurement Grid: 5.0 mm x 5.0 mm x 1.4 mm

Power Drift = 0.00 dB

SAR (1g) = 6.78 W/kg; SAR (8g) = 2.89 W/kg; SAR (10g) = 2.55 W/kg

Smallest distance from peaks to all points 3 dB below = 9.0 mm

Ratio of SAR at M2 to SAR at M1 = 75.7 %



System Check_Head_3700MHz

DUT: D3700V2 - SN1022

Communication System: CW; Frequency: 3700.000 MHz; Duty Cycle: 1:1
Medium: HSL_3700_230531 Medium parameters used: $f=3700.000$ MHz; $\sigma=3.21$ S/m; $\epsilon_r=38.2$
Ambient Temperature: 23.4°C; Liquid Temperature: 22.4°C

DASY6 Configuration:

- Probe: EX3DV4 - SN3642; ConvF(6.42, 6.42, 6.42); Calibrated: 2023-04-26
- Sensor-Surface: 1.4 mm
- Electronics: DAE4 Sn1694; Calibrated: 2022-11-18
- Phantom: Twin-SAM V8.0 (30deg probe tilt); Serial: 2055; Section: Flat
- Measurement Software: 16.2.4.2524
- UID: CW, 0--

Pin=20.0dBm/Area Scan (40.0 mm x 80.0 mm): Measurement Grid: 10.0 mm x 10.0 mm
SAR (1g) = 6.63 W/kg; SAR (10g) = 2.50 W/kg;

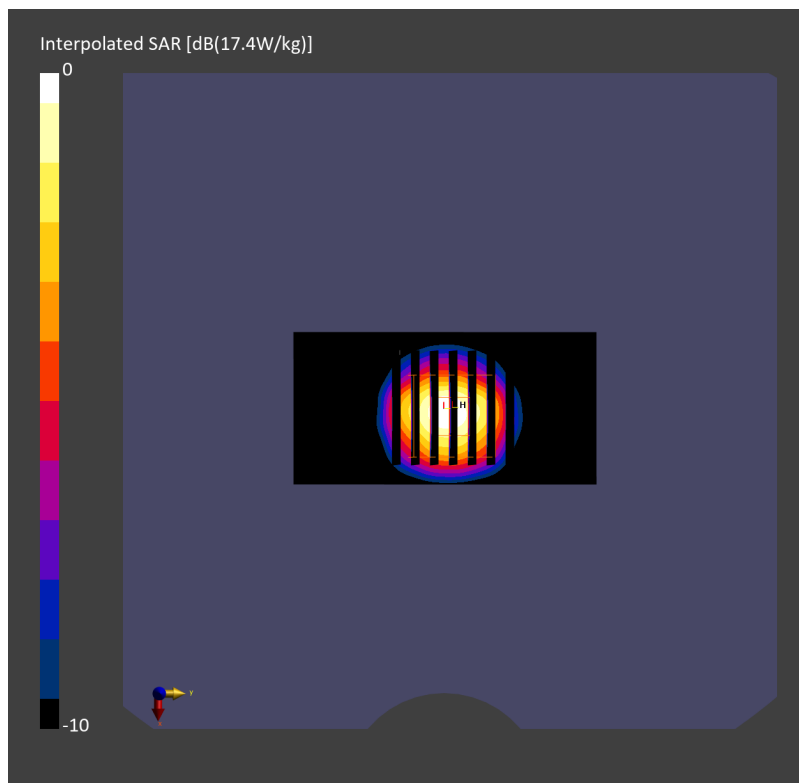
Pin=20.0dBm/Zoom Scan (28.0 mm x 28.0 mm x 28.0 mm): Measurement Grid: 5.0 mm x 5.0 mm x 1.4 mm

Power Drift = 0.01 dB

SAR (1g) = 6.74 W/kg; SAR (8g) = 2.87 W/kg; SAR (10g) = 2.54 W/kg

Smallest distance from peaks to all points 3 dB below = 9.0 mm

Ratio of SAR at M2 to SAR at M1 = 75.7 %



System Check_Head_3700MHz

DUT: D3700V2 - SN1022

Communication System: CW; Frequency: 3700.000 MHz; Duty Cycle: 1:1
Medium: HSL_3700_230601 Medium parameters used: $f=3700.000$ MHz; $\sigma=3.19$ S/m; $\epsilon_r=38.4$
Ambient Temperature: 23.5°C; Liquid Temperature: 22.5°C

DASY6 Configuration:

- Probe: EX3DV4 - SN3642; ConvF(6.42, 6.42, 6.42); Calibrated: 2023-04-26
- Sensor-Surface: 1.4 mm
- Electronics: DAE4 Sn1694; Calibrated: 2022-11-18
- Phantom: Twin-SAM V8.0 (30deg probe tilt); Serial: 2055; Section: Flat
- Measurement Software: 16.2.4.2524
- UID: CW, 0--

Pin=20.0dBm/Area Scan (40.0 mm x 80.0 mm): Measurement Grid: 10.0 mm x 10.0 mm
SAR (1g) = 6.54 W/kg; SAR (10g) = 2.47 W/kg;

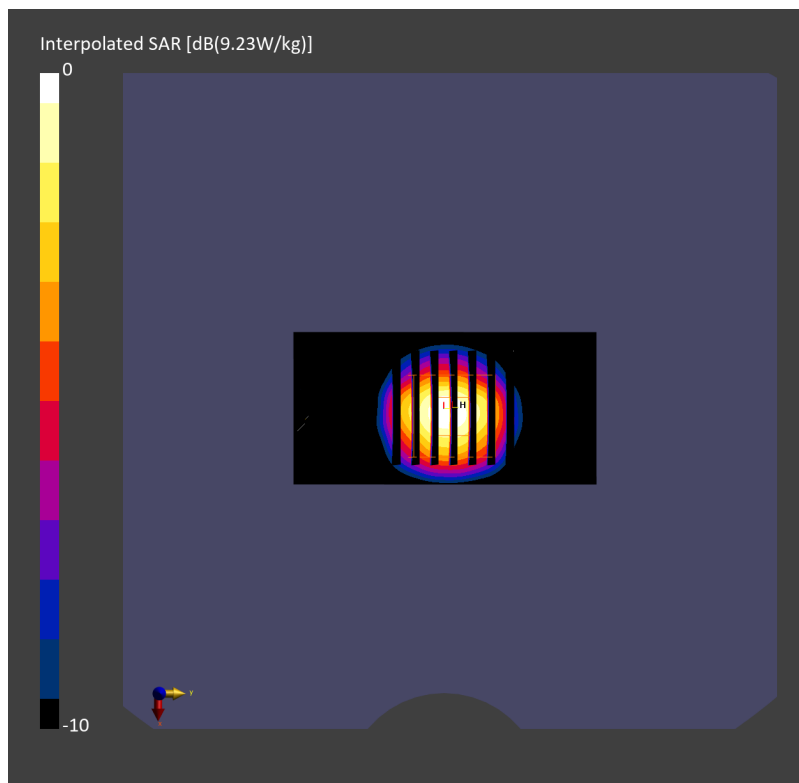
Pin=20.0dBm/Zoom Scan (28.0 mm x 28.0 mm x 28.0 mm): Measurement Grid: 5.0 mm x 5.0 mm x 1.4 mm

Power Drift = 0.00 dB

SAR (1g) = 6.66 W/kg; SAR (8g) = 2.84 W/kg; SAR (10g) = 2.51 W/kg

Smallest distance from peaks to all points 3 dB below = 9.0 mm

Ratio of SAR at M2 to SAR at M1 = 75.7 %



System Check_Head_3900MHz

DUT: D3900V2 - SN1017

Communication System: CW; Frequency: 3900.000 MHz; Duty Cycle: 1:1
Medium: HSL_3900_230529 Medium parameters used: $f=3900.000$ MHz; $\sigma=3.33$ S/m; $\epsilon_r=37.6$
Ambient Temperature: 23.7°C; Liquid Temperature: 22.7°C

DASY6 Configuration:

- Probe: EX3DV4 - SN3642; ConvF(6.22, 6.22, 6.22); Calibrated: 2023-04-26
- Sensor-Surface: 1.4 mm
- Electronics: DAE4 Sn1694; Calibrated: 2022-11-18
- Phantom: Twin-SAM V8.0 (30deg probe tilt); Serial: 2055; Section: Flat
- Measurement Software: 16.2.4.2524
- UID: CW, 0--

Pin=20.0dBm/Area Scan (40.0 mm x 80.0 mm): Measurement Grid: 10.0 mm x 10.0 mm
SAR (1g) = 6.70 W/kg; SAR (10g) = 2.41 W/kg;

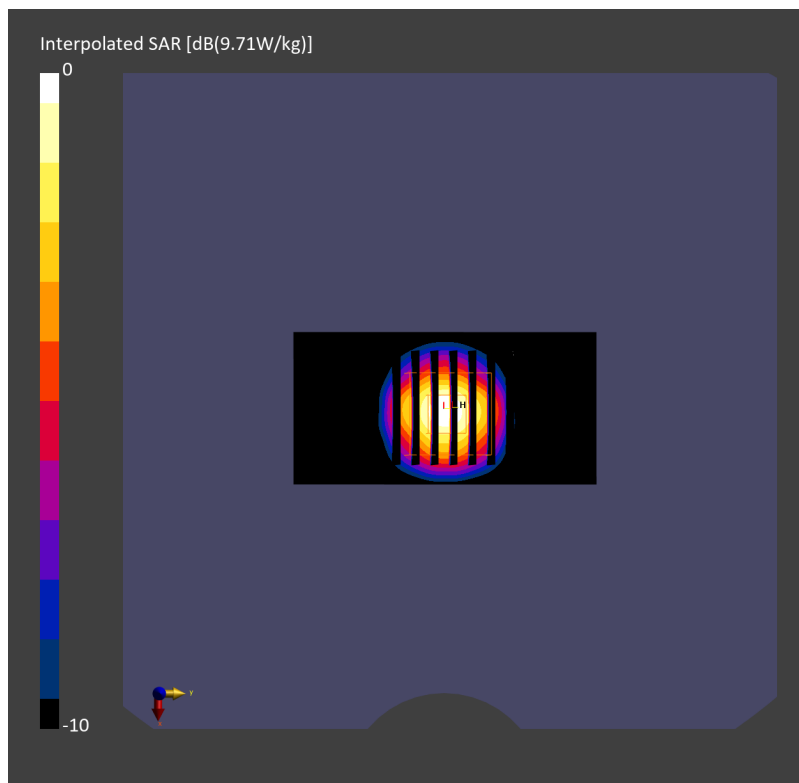
Pin=20.0dBm/Zoom Scan (28.0 mm x 28.0 mm x 28.0 mm): Measurement Grid: 5.0 mm x 5.0 mm x 1.4 mm

Power Drift = -0.00 dB

SAR (1g) = 6.93 W/kg; SAR (8g) = 2.90 W/kg; SAR (10g) = 2.55 W/kg

Smallest distance from peaks to all points 3 dB below = 8.3 mm

Ratio of SAR at M2 to SAR at M1 = 74.5 %



System Check_Head_3900MHz

DUT: D3900V2 - SN1017

Communication System: CW; Frequency: 3900.000 MHz; Duty Cycle: 1:1
Medium: HSL_3900_230530 Medium parameters used: $f=3900.000$ MHz; $\sigma=3.34$ S/m; $\epsilon_r=37.8$
Ambient Temperature: 23.8°C; Liquid Temperature: 22.8°C

DASY6 Configuration:

- Probe: EX3DV4 - SN3642; ConvF(6.22, 6.22, 6.22); Calibrated: 2023-04-26
- Sensor-Surface: 1.4 mm
- Electronics: DAE4 Sn1694; Calibrated: 2022-11-18
- Phantom: Twin-SAM V8.0 (30deg probe tilt); Serial: 2055; Section: Flat
- Measurement Software: 16.2.4.2524
- UID: CW, 0--

Pin=20.0dBm/Area Scan (40.0 mm x 80.0 mm): Measurement Grid: 10.0 mm x 10.0 mm
SAR (1g) = 6.80 W/kg; SAR (10g) = 2.44 W/kg;

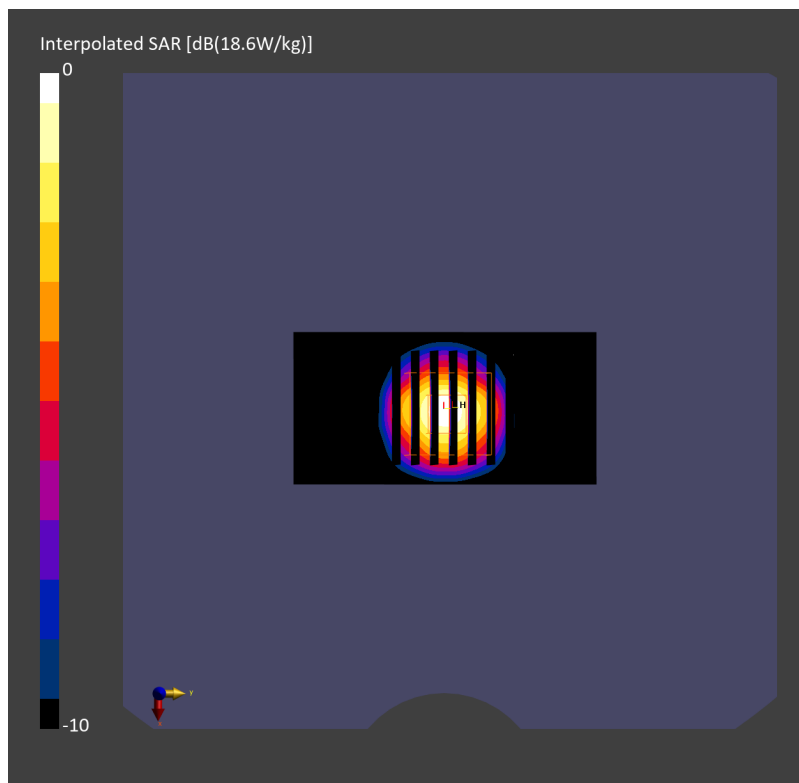
Pin=20.0dBm/Zoom Scan (28.0 mm x 28.0 mm x 28.0 mm): Measurement Grid: 5.0 mm x 5.0 mm x 1.4 mm

Power Drift = 0.00 dB

SAR (1g) = 7.02 W/kg; SAR (8g) = 2.91 W/kg; SAR (10g) = 2.58 W/kg

Smallest distance from peaks to all points 3 dB below = 8.3 mm

Ratio of SAR at M2 to SAR at M1 = 74.7 %



System Check_Head_3900MHz

DUT: D3900V2 - SN1017

Communication System: CW; Frequency: 3900.000 MHz; Duty Cycle: 1:1
Medium: HSL_3900_230531 Medium parameters used: $f=3900.000$ MHz; $\sigma=3.42$ S/m; $\epsilon_r=38.0$
Ambient Temperature: 23.4°C; Liquid Temperature: 22.4°C

DASY6 Configuration:

- Probe: EX3DV4 - SN3642; ConvF(6.22, 6.22, 6.22); Calibrated: 2023-04-26
- Sensor-Surface: 1.4 mm
- Electronics: DAE4 Sn1694; Calibrated: 2022-11-18
- Phantom: Twin-SAM V8.0 (30deg probe tilt); Serial: 2055; Section: Flat
- Measurement Software: 16.2.4.2524
- UID: CW, 0--

Pin=20.0dBm/Area Scan (40.0 mm x 80.0 mm): Measurement Grid: 10.0 mm x 10.0 mm
SAR (1g) = 6.89 W/kg; SAR (10g) = 2.48 W/kg;

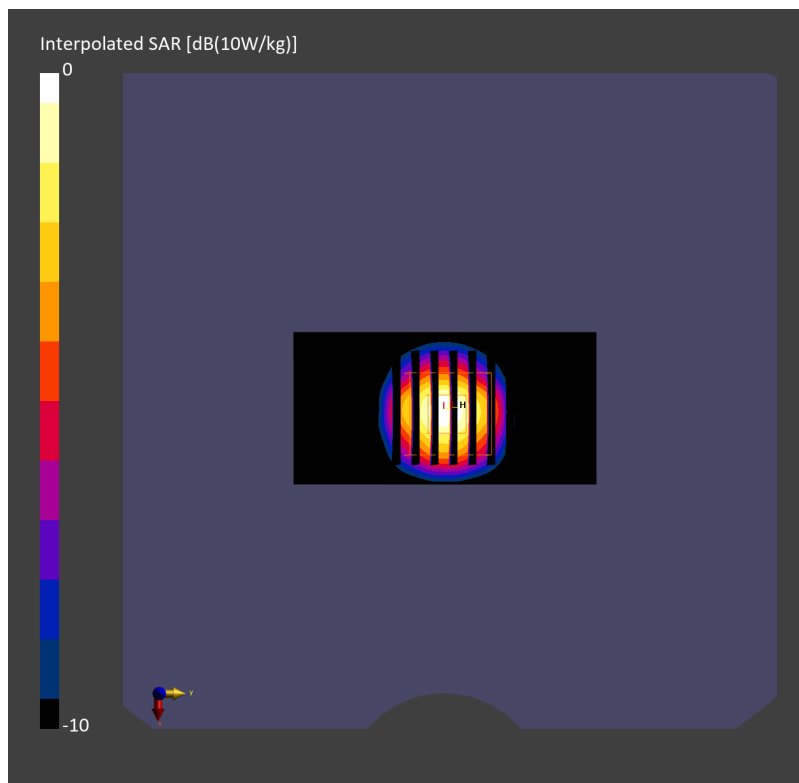
Pin=20.0dBm/Zoom Scan (28.0 mm x 28.0 mm x 28.0 mm): Measurement Grid: 5.0 mm x 5.0 mm x 1.4 mm

Power Drift = -0.00 dB

SAR (1g) = 7.14 W/kg; SAR (8g) = 2.98 W/kg; SAR (10g) = 2.61 W/kg

Smallest distance from peaks to all points 3 dB below = 8.3 mm

Ratio of SAR at M2 to SAR at M1 = 74.7 %



System Check_Head_3900MHz

DUT: D3900V2 - SN1017

Communication System: CW; Frequency: 3900.000 MHz; Duty Cycle: 1:1
Medium: HSL_3900_230601 Medium parameters used: $f=3900.000$ MHz; $\sigma=3.39$ S/m; $\epsilon_r=38.1$
Ambient Temperature: 23.5°C; Liquid Temperature: 22.5°C

DASY6 Configuration:

- Probe: EX3DV4 - SN3642; ConvF(6.22, 6.22, 6.22); Calibrated: 2023-04-26
- Sensor-Surface: 1.4 mm
- Electronics: DAE4 Sn1694; Calibrated: 2022-11-18
- Phantom: Twin-SAM V8.0 (30deg probe tilt); Serial: 2055; Section: Flat
- Measurement Software: 16.2.4.2524
- UID: CW, 0--

Pin=20.0dBm/Area Scan (40.0 mm x 80.0 mm): Measurement Grid: 10.0 mm x 10.0 mm
SAR (1g) = 6.76 W/kg; SAR (10g) = 2.43 W/kg;

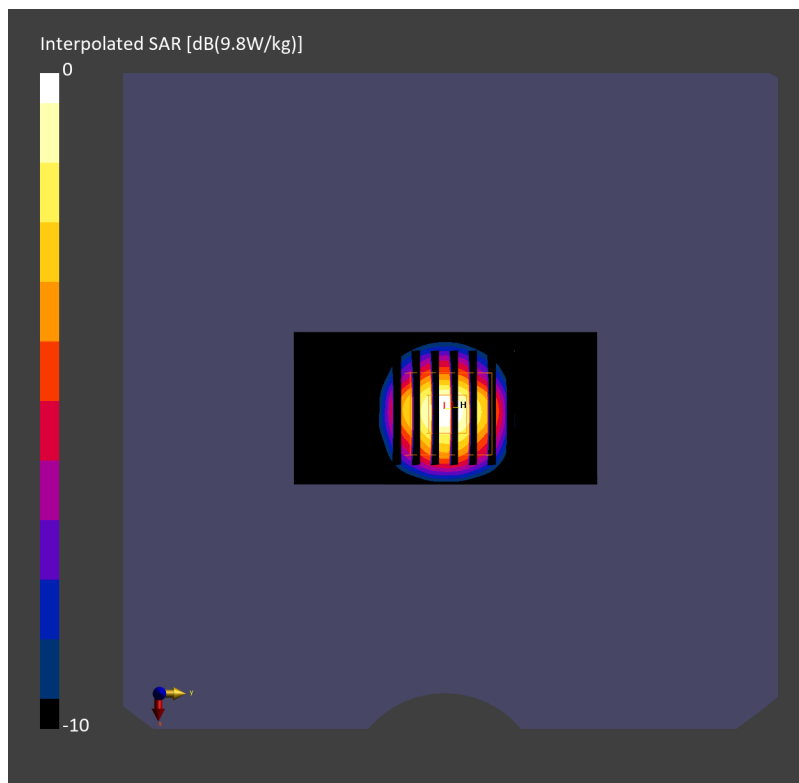
Pin=20.0dBm/Zoom Scan (28.0 mm x 28.0 mm x 28.0 mm): Measurement Grid: 5.0 mm x 5.0 mm x 1.4 mm

Power Drift = 0.00 dB

SAR (1g) = 7.00 W/kg; SAR (8g) = 2.92 W/kg; SAR (10g) = 2.57 W/kg

Smallest distance from peaks to all points 3 dB below = 8.3 mm

Ratio of SAR at M2 to SAR at M1 = 74.6 %



System Check_Head_2450MHz

DUT: D2450V2 - SN736

Communication System: CW; Frequency: 2450.000 MHz; Duty Cycle: 1:1

Medium: HSL_2450_2306010 Medium parameters used: $f=2450.000$ MHz; $\sigma=1.80$ S/m; $\epsilon_r=39.4$

Ambient Temperature: 23.5°C; Liquid Temperature: 22.5°C

DASY6 Configuration:

- Probe: EX3DV4 - SN7306; ConvF(7.54, 7.54, 7.54); Calibrated: 2022-07-28
- Sensor-Surface: 1.4 mm
- Electronics: DAE4 Sn1694; Calibrated: 2022-11-18
- Phantom: Twin-SAM V8.0 (30deg probe tilt); Serial: 2055; Section: Flat
- Measurement Software: 16.2.4.2524
- UID: CW, 0--

Pin=17.0dBm/Area Scan (40.0 mm x 80.0 mm): Measurement Grid: 10.0 mm x 10.0 mm
SAR (1g) = 2.51 W/kg; SAR (10g) = 1.18 W/kg;

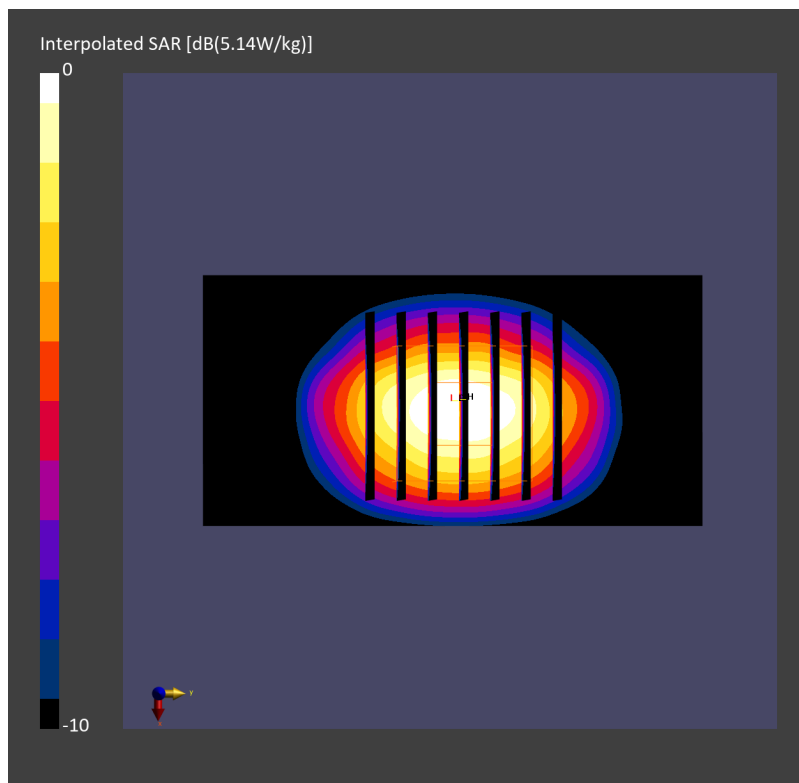
Pin=17.0dBm/Zoom Scan (30.0 mm x 30.0 mm x 30.0 mm): Measurement Grid: 5.0 mm x 5.0 mm x 1.5 mm

Power Drift = 0.01 dB

SAR (1g) = 2.53 W/kg; SAR (8g) = 1.32 W/kg; SAR (10g) = 1.19 W/kg

Smallest distance from peaks to all points 3 dB below = 9.0 mm

Ratio of SAR at M2 to SAR at M1 = 80.6 %



System Check_Head_5250MHz

DUT: D5GHzV2 - SN1171

Communication System: CW; Frequency: 5250.000 MHz; Duty Cycle: 1:1

Medium: HSL_5G_230611 Medium parameters used: $f = 5250.000$ MHz; $\sigma = 4.75$ S/m; $\epsilon_r = 37.0$

Ambient Temperature: 23.7°C; Liquid Temperature: 22.7°C

DASY6 Configuration:

- Probe: EX3DV4 - SN7306; ConvF(5.34, 5.34, 5.34); Calibrated: 2022-07-28
- Sensor-Surface: 1.4 mm
- Electronics: DAE4 Sn1694; Calibrated: 2022-11-18
- Phantom: Twin-SAM V8.0 (30deg probe tilt); Serial: 2055; Section: Flat
- Measurement Software: 16.2.4.2524
- UID: CW, 0--

Pin=17.0dBm/Area Scan (40.0 mm x 80.0 mm): Measurement Grid: 10.0 mm x 10.0 mm
SAR (1g) = 3.45 W/kg; SAR (10g) = 1.01 W/kg;

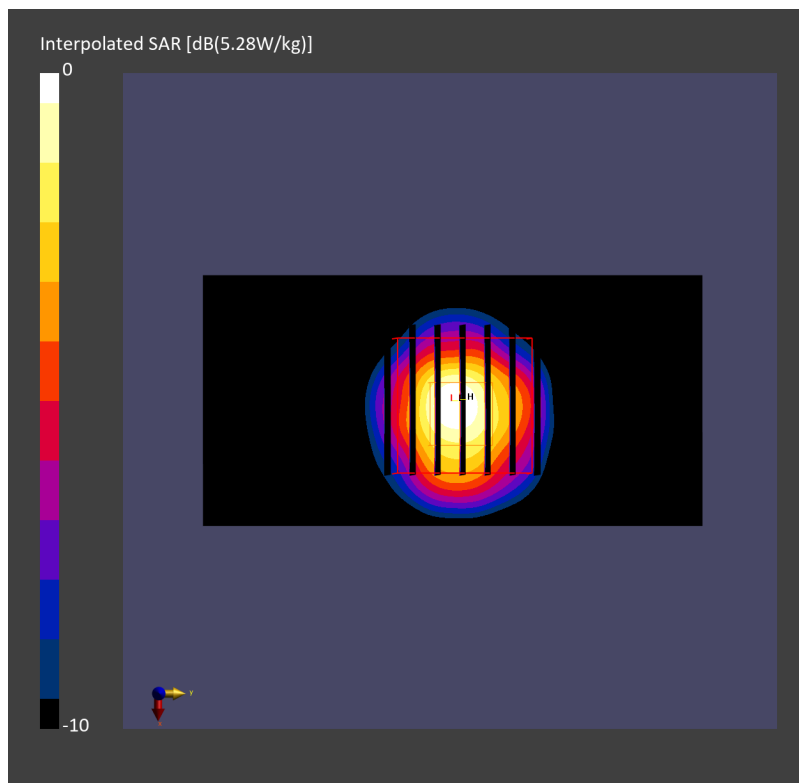
Pin=17.0dBm/Zoom Scan (22.0 mm x 22.0 mm x 22.0 mm): Measurement Grid: 4.0 mm x 4.0 mm x 1.4 mm

Power Drift = 0.00 dB

SAR (1g) = 3.66 W/kg; SAR (8g) = 1.24 W/kg; SAR (10g) = 1.07 W/kg

Smallest distance from peaks to all points 3 dB below = 7.4 mm

Ratio of SAR at M2 to SAR at M1 = 66.5 %



System Check_Head_5600MHz

DUT: D5GHzV2 - SN1171

Communication System: CW; Frequency: 5600.000 MHz; Duty Cycle: 1:1

Medium: HSL_5G_230611 Medium parameters used: $f = 5600.000$ MHz; $\sigma = 5.12$ S/m; $\epsilon_r = 36.5$

Ambient Temperature: 23.7°C; Liquid Temperature: 22.7°C

DASY6 Configuration:

- Probe: EX3DV4 - SN7306; ConvF(4.66, 4.66, 4.66); Calibrated: 2022-07-28
- Sensor-Surface: 1.4 mm
- Electronics: DAE4 Sn1694; Calibrated: 2022-11-18
- Phantom: Twin-SAM V8.0 (30deg probe tilt); Serial: 2055; Section: Flat
- Measurement Software: 16.2.4.2524
- UID: CW, 0--

Pin=17.0dBm/Area Scan (40.0 mm x 80.0 mm): Measurement Grid: 10.0 mm x 10.0 mm

SAR (1g) = 3.87 W/kg; SAR (10g) = 1.13 W/kg;

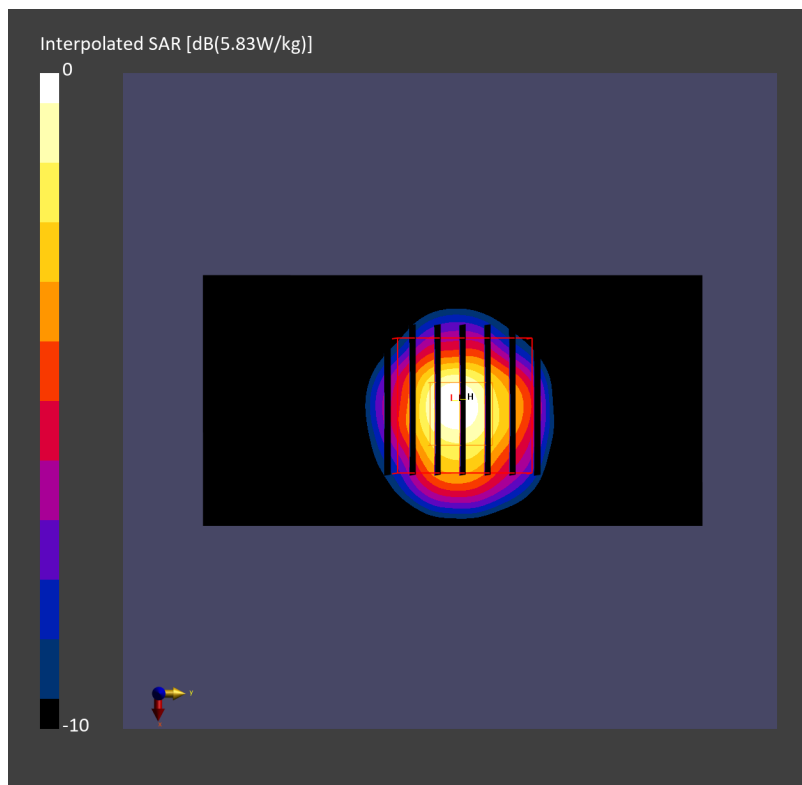
Pin=17.0dBm/Zoom Scan (22.0 mm x 22.0 mm x 22.0 mm): Measurement Grid: 4.0 mm x 4.0 mm x 1.4 mm

Power Drift = 0.01 dB

SAR (1g) = 4.13 W/kg; SAR (8g) = 1.39 W/kg; SAR (10g) = 1.19 W/kg

Smallest distance from peaks to all points 3 dB below = 7.6 mm

Ratio of SAR at M2 to SAR at M1 = 63.6 %



System Check_Head_5750MHz

DUT: D5GHzV2 - SN1171

Communication System: CW; Frequency: 5750.000 MHz; Duty Cycle: 1:1

Medium: HSL_5G_230611 Medium parameters used: $f = 5750.000$ MHz; $\sigma = 5.29$ S/m; $\epsilon_r = 36.3$

Ambient Temperature: 23.7°C; Liquid Temperature: 22.7°C

DASY6 Configuration:

- Probe: EX3DV4 - SN7306; ConvF(4.96, 4.96, 4.96); Calibrated: 2022-07-28
- Sensor-Surface: 1.4 mm
- Electronics: DAE4 Sn1694; Calibrated: 2022-11-18
- Phantom: Twin-SAM V8.0 (30deg probe tilt); Serial: 2055; Section: Flat
- Measurement Software: 16.2.4.2524
- UID: CW, 0--

Pin=17.0dBm/Area Scan (40.0 mm x 80.0 mm): Measurement Grid: 10.0 mm x 10.0 mm
SAR (1g) = 3.42 W/kg; SAR (10g) = 1.00 W/kg;

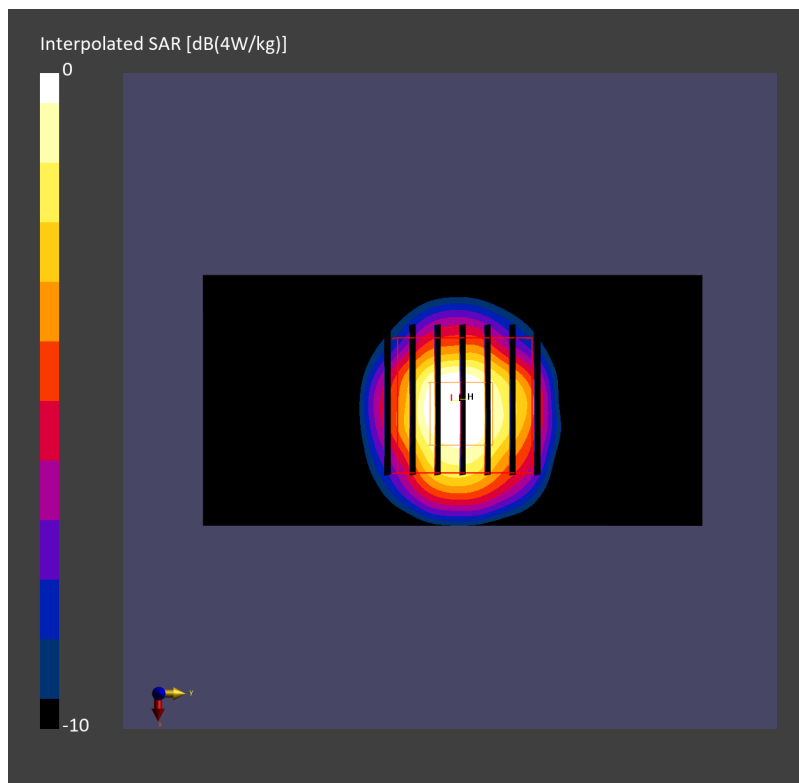
Pin=17.0dBm/Zoom Scan (22.0 mm x 22.0 mm x 22.0 mm): Measurement Grid: 4.0 mm x 4.0 mm x 1.4 mm

Power Drift = 0.02 dB

SAR (1g) = 3.65 W/kg; SAR (8g) = 1.23 W/kg; SAR (10g) = 1.06 W/kg

Smallest distance from peaks to all points 3 dB below = 7.4 mm

Ratio of SAR at M2 to SAR at M1 = 62.1 %



System Check_Head_5850MHz

DUT: D5GHzV2 - SN1171

Communication System: CW; Frequency: 5850.000 MHz; Duty Cycle: 1:1

Medium: HSL_5G_230611 Medium parameters used: $f = 5850.000$ MHz; $\sigma = 5.40$ S/m; $\epsilon_r = 36.1$

Ambient Temperature: 23.7°C; Liquid Temperature: 22.7°C

DASY6 Configuration:

- Probe: EX3DV4 - SN3642; ConvF(4.23, 4.23, 4.23); Calibrated: 2023-04-26
- Sensor-Surface: 1.4 mm
- Electronics: DAE4 Sn1694; Calibrated: 2022-11-18
- Phantom: Twin-SAM V8.0 (30deg probe tilt); Serial: 2055; Section: Flat
- Measurement Software: 16.2.4.2524
- UID: CW, 0--

Pin=20.0dBm/Area Scan (40.0 mm x 80.0 mm): Measurement Grid: 10.0 mm x 10.0 mm
SAR (1g) = 8.16 W/kg; SAR (10g) = 2.33 W/kg;

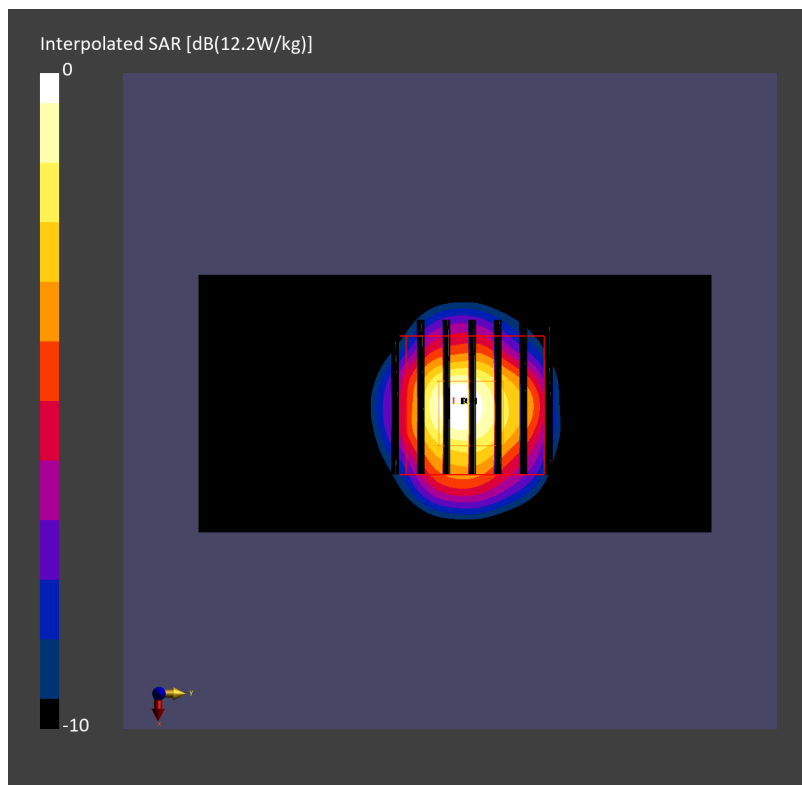
Pin=20.0dBm/Zoom Scan (22.0 mm x 22.0 mm x 22.0 mm): Measurement Grid: 4.0 mm x 4.0 mm x 1.4 mm

Power Drift = -0.01 dB

SAR (1g) = 8.58 W/kg; SAR (8g) = 2.83 W/kg; SAR (10g) = 2.42 W/kg

Smallest distance from peaks to all points 3 dB below = 7.9 mm

Ratio of SAR at M2 to SAR at M1 = 61.5 %



System Check_Head_6500MHz

DUT: D6.5GHzV2 - SN1003

Communication System: CW; Frequency: 6500.000 MHz; Duty Cycle: 1:1

Medium: HSL_6G_230611 Medium parameters used: $f = 6500.000$ MHz; $\sigma = 6.16$ S/m; $\epsilon_r = 34.7$

Ambient Temperature: 23.7°C; Liquid Temperature: 22.7°C

DASY6 Configuration:

- Probe: EX3DV4 - SN3642; ConvF(5.2, 5.2, 5.2); Calibrated: 2023-04-26
- Sensor-Surface: 1.4 mm
- Electronics: DAE4 Sn1694; Calibrated: 2022-11-18
- Phantom: Twin-SAM V8.0 (30deg probe tilt); Serial: 2055; Section: Flat
- Measurement Software: 16.2.4.2524
- UID: CW, 0--

Pin=20.0dBm/Area Scan (51.0 mm x 85.0 mm): Measurement Grid: 8.5 mm x 8.5 mm
SAR (1g) = 29.4 W/kg; SAR (10g) = 5.63 W/kg;

Pin=20.0dBm/Zoom Scan (22.0 mm x 22.0 mm x 22.0 mm): Measurement Grid: 3.4 mm x 3.4 mm x 1.4 mm

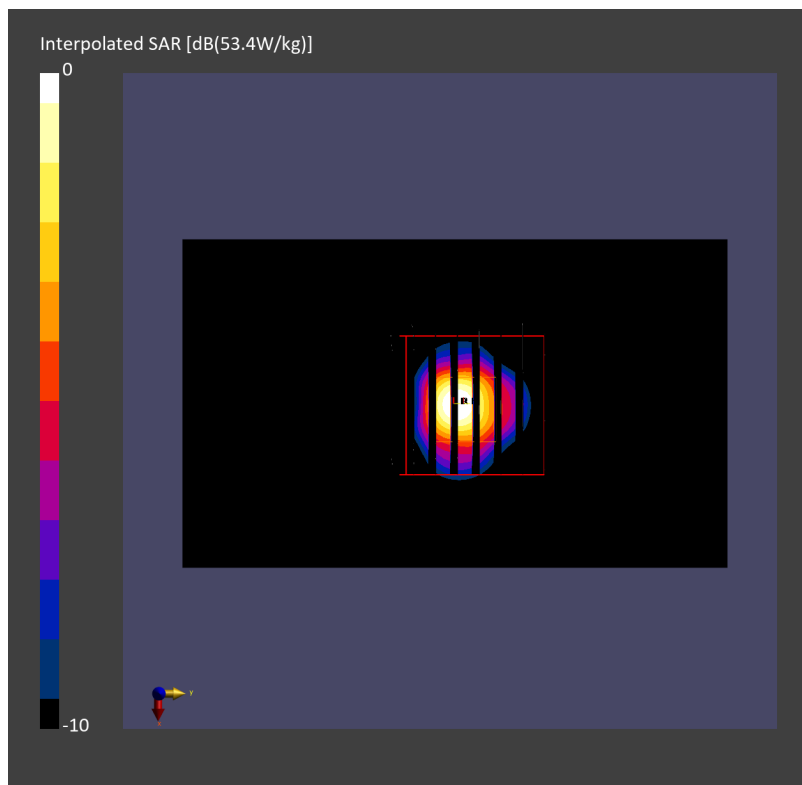
Power Drift = -0.01 dB

SAR (1g) = 31.4 W/kg; SAR (8g) = 7.08 W/kg; SAR (10g) = 5.80 W/kg

Smallest distance from peaks to all points 3 dB below = 4.4 mm

Ratio of SAR at M2 to SAR at M1 = 51.1 %

psAPD (1.0cm², sq) = 314 [W/m²]; psAPD (4.0cm², sq) = 142 [W/m²]



System Check_Head_13MHz

DUT: CLA13-1011

Communication System: CW; Frequency: 13.0 MHz; Duty Cycle: 1:1

Medium: HSL_13_230418 Medium parameters used: $f=13.0$ MHz; $\sigma=0.757$ S/m; $\epsilon_r=53.6$

Ambient Temperature: 23.5°C; Liquid Temperature: 22.5°C

DASY6 Configuration:

- Probe: EX3DV4 - SN7306; ConvF(16.39, 16.39, 16.39); Calibrated: 2022-07-28
- Sensor-Surface: 1.4 mm
- Electronics: DAE4 Sn1694; Calibrated: 2022-11-18
- Phantom: ELI V8.0 (20deg probe tilt); Serial: 2156; Section: Flat
- Measurement Software: 16.2.4.1816
- UID: CW, 0--

Pin=24dBm/Area Scan (270.0 mm x 270.0 mm): Measurement Grid: 15.0 mm x 15.0 mm
SAR (1g) = 0.156 W/kg; SAR (10g) = 0.125 W/kg;

Pin=24dBm/Zoom Scan (30.0 mm x 32.0 mm x 30.0 mm): Measurement Grid: 6.0 mm x 6.0 mm x 1.5 mm

Power Drift = -0.00 dB

SAR (1g) = 0.147 W/kg; SAR (8g) = 0.097 W/kg; SAR (10g) = 0.091 W/kg

Smallest distance from peaks to all points 3 dB below = 15.7 mm

Ratio of SAR at M2 to SAR at M1 = 75.3 %

