

Power Density Evaluation Report

FCC ID : A4RGE2AE
Equipment : Phone
Applicant : Google LLC
1600 Amphitheatre Parkway,
Mountain View, California, 94043 USA
Standard : FCC 47 CFR Part 2 (2.1093)

The product was received on Mar. 21, 2022 and testing was started from Apr. 02, 2022 and completed on Apr. 21, 2022. We, SPORTON INTERNATIONAL INC., would like to declare that the tested sample provide by manufacturer and the test data has been evaluated in accordance with the test procedures given in 47 CFR part2.1093 and has been pass the FCC requirement.

The test results in this report apply exclusively to the tested model / sample. Without written approval of SPORTON INTERNATIONAL INC. Laboratory, the test report shall not be reproduced except in full.



Approved by: Cona Huang / Deputy Manager



Sporton International Inc. EMC & Wireless Communications Laboratory
No.52, Huaya 1st Rd., Guishan Dist., Taoyuan City 333, Taiwan



Table of Contents

1. Summary..... 4

2. Guidance Applied..... 4

3. Equipment Under Test (EUT) Information..... 5

 3.1 General Information 5

4. RF Exposure Limits..... 6

 4.1 Uncontrolled Environment..... 6

 4.2 Controlled Environment..... 6

5. System Description and Setup 7

 5.1 Test Site Location..... 7

 5.2 EUMmWave Probe / E-Field 5G Probe..... 8

 5.3 Data Acquisition Electronics (DAE) 9

 5.4 Scan configuration 9

6. Test Equipment List..... 9

7. System Verification Source.....10

8. Power Density System Verification11

9. System Verification Results11

 9.1 Computation of the Electric Field Polarization Ellipse12

 9.2 Total Field and Power Flux Density Reconstruction12

 9.3 Test Positions.....13

10. RF Exposure Evaluation Results13

11. 5G NR + LTE + WLAN + BT Sim-Tx analysis.....15

12. Simultaneous-Tx analysis16

 12.1 Simultaneous transmission analysis for WiFi/BT + 5G NR.....18

13. Uncertainty Assessment31

14. References.....32

- Appendix A. Plots of System Performance Check
- Appendix B. Plots of Power Density Measurement
- Appendix C. DASy Calibration Certificate
- Appendix D. Setup Photo



History of this test report

Report No.	Version	Description	Issued Date
FA1O2919-05D	01	Initial issue of report	Jun. 06, 2022
FA1O2919-05D	02	Update section 12	Jun. 10, 2022



1. Summary

The maximum measured average power density found during testing for Google LLC, Phone, are as follows.

Standalone transmission				Simultaneous transmission with other transmitters
RF Transmitter		Measured PD (mW/cm ²)	Reported PD (mW/cm ²)	Summation of Exposure Ratio
5G FR2	n258	0.426	0.75	0.998
	n260	0.537	0.75	
	n261	0.383	0.75	
Result		PASS		

Reviewed by: Jason Wang
Report Producer: Daisy Peng

2. Guidance Applied

The Power Density testing specification, method, and procedure for this device is in accordance with the following standards, if the KDB standards were not list within TAF approval, because it is included in the KDB 447498.

- FCC 47 CFR Part 2.1091
- FCC 47 CFR Part 2.1093
- FCC KDB 865664 D02 SAR Reporting v01r02
- FCC KDB 447498 D01 General RF Exposure Guidance v06
- FCC KDB 648474 D04 SAR Evaluation Considerations for Wireless Handsets v01r03
- TCBC workshop notes
- IEC Draft TR 63170



3. Equipment Under Test (EUT) Information

3.1 General Information

Product Feature & Specification	
Equipment Name	Phone
FCC ID	A4RGE2AE
SN	22271FDH30004C
Wireless Technology and Frequency Range	GSM850: 824.2 MHz ~ 848.8 MHz GSM1900: 1850.2 MHz ~ 1909.8 MHz WCDMA Band II: 1850 MHz ~ 1910 MHz WCDMA Band IV: 1710 MHz ~ 1755 MHz WCDMA Band V: 824 MHz ~ 849 MHz LTE Band 2: 1850 MHz ~ 1910 MHz LTE Band 4: 1710 MHz ~ 1755 MHz LTE Band 5: 824 MHz ~ 849 MHz LTE Band 7: 2500 MHz ~ 2570 MHz LTE Band 12: 699 MHz ~ 716 MHz LTE Band 13: 777 MHz ~ 787 MHz LTE Band 14: 788 MHz ~ 798 MHz LTE Band 17: 704 MHz ~ 716 MHz LTE Band 25: 1850 MHz ~ 1915 MHz LTE Band 26: 814 MHz ~ 849 MHz LTE Band 30: 2305 MHz ~ 2315 MHz LTE Band 38: 2570 MHz ~ 2620 MHz LTE Band 41: 2496 MHz ~ 2690 MHz LTE Band 48: 3550 MHz ~ 3700 MHz LTE Band 66: 1710 MHz ~ 1780 MHz LTE Band 71: 663 MHz ~ 698 MHz 5G NR n2 : 1850 MHz ~ 1910 MHz 5G NR n5 : 824 MHz ~ 849 MHz 5G NR n7 : 2500 MHz ~ 2570 MHz 5G NR n12 : 699 MHz ~ 716 MHz 5G NR n14 : 788 MHz ~ 798 MHz 5G NR n25 : 1850 MHz ~ 1915 MHz 5G NR n30 : 2305 MHz ~ 2315 MHz 5G NR n38 : 2570 MHz ~ 2620 MHz 5G NR n41 : 2496 MHz ~ 2690 MHz 5G NR n48 : 3550 MHz ~ 3700 MHz 5G NR n66 : 1710 MHz ~ 1780 MHz 5G NR n71 : 663 MHz ~ 698 MHz 5G NR n77: 3450MHz ~ 3550MHz, 3700 MHz ~ 3980 MHz 5G NR n258 : 24.25 GHz~24.45 GHz, 24.75GHz ~25.25GHz 5G NR n260 : 37 GHz~40 GHz 5G NR n261 : 27.5 GHz~28.35 GHz WLAN 2.4GHz Band: 2400 MHz ~ 2483.5 MHz WLAN 5.2G Band: 5150 MHz ~ 5250 MHz WLAN 5.3G Band: 5250 MHz ~ 5350 MHz WLAN 5.5G Band: 5470 MHz ~ 5725 MHz WLAN 5.8G Band: 5725 MHz ~ 5850 MHz WLAN 5.8G UNII4 Band: 5850 MHz ~ 5895 MHz WLAN6E: 5925 MHz ~ 6425 MHz, 6425 MHz ~ 6525 MHz, 6525 MHz ~ 6875 MHz, 6875 MHz ~ 7125 MHz Bluetooth: 2400 MHz ~ 2483.5 MHz NFC: 13.56 MHz WPT: 110KHz ~ 148.5KHz UWB: 6489.6 MHz, 7987.2 MHz
Mode	GSM/GPRS/EGPRS RMC/AMR 12.2Kbps HSDPA HSUPA LTE: QPSK, 16QAM, 64QAM, 256QAM 5G NR: DFT-s-OFDM/CP-OFDM, Pi/2 BPSK/QPSK/16QAM/64QAM/256QAM WLAN: 802.11a/b/g/n/ac/ax HT20/HT40/VHT20/VHT40/VHT80/VHT160/HE20/HE40/HE80/HE160 Bluetooth BR/EDR/LE NFC:ASK WPT: ASK UWB: BPM-BPSK



4. RF Exposure Limits

4.1 Uncontrolled Environment

Uncontrolled Environments are defined as locations where there is the exposure of individuals who have no knowledge or control of their exposure. The general population/uncontrolled exposure limits are applicable to situations in which the general public may be exposed or in which persons who are exposed as a consequence of their employment may not be made fully aware of the potential for exposure or cannot exercise control over their exposure. Members of the general public would come under this category when exposure is not employment-related; for example, in the case of a wireless transmitter that exposes persons in its vicinity.

4.2 Controlled Environment

Controlled Environments are defined as locations where there is exposure that may be incurred by persons who are aware of the potential for exposure, (i.e. as a result of employment or occupation). In general, occupational/controlled exposure limits are applicable to situations in which persons are exposed as a consequence of their employment, who have been made fully aware of the potential for exposure and can exercise control over their exposure. The exposure category is also applicable when the exposure is of a transient nature due to incidental passage through a location where the exposure levels may be higher than the general population/uncontrolled limits, but the exposed person is fully aware of the potential for exposure and can exercise control over his or her exposure by leaving the area or by some other appropriate means.

The criteria listed in Table 1 shall be used to evaluate the environmental impact of human exposure above 6GHz to radio frequency (RF) radiation as specified in §1.1310.

General Population Basic restriction for power density for frequencies between 1.5GHz and 100 GHz is $1.0 \text{ mW/cm}^2 = 10 \text{ W/m}^2$

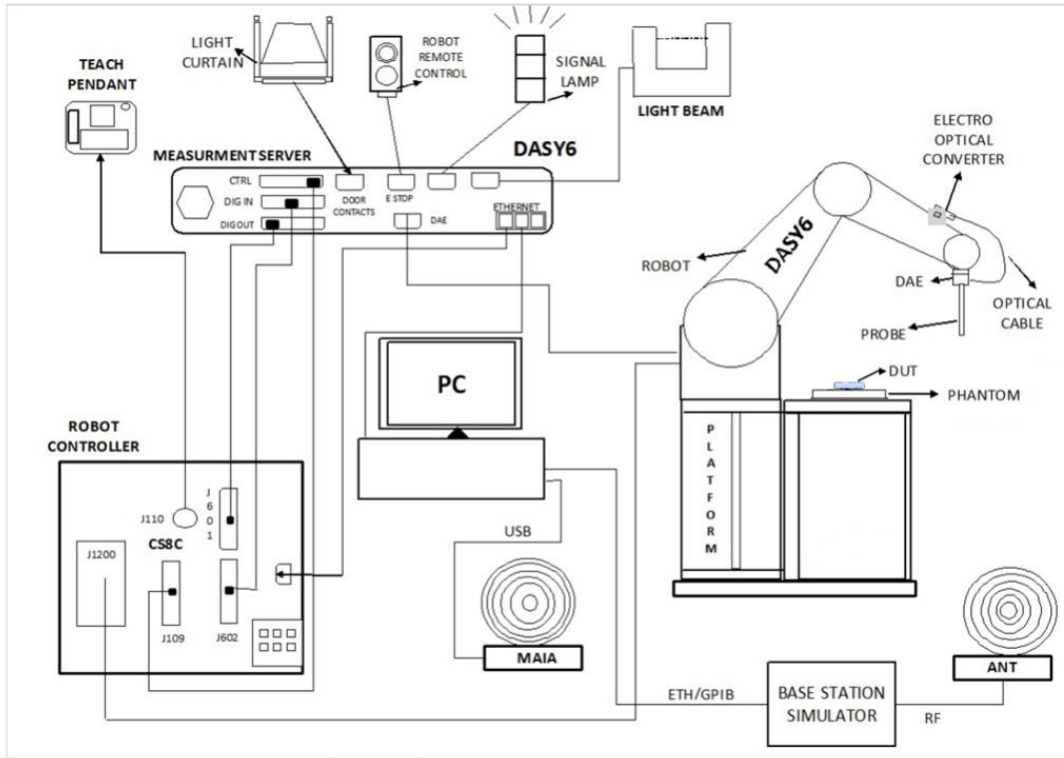
Frequency range (MHz)	Electric field strength (V/m)	Magnetic field strength (A/m)	Power density (mW/cm ²)	Averaging time (minutes)
(A) Limits for Occupational/Controlled Exposures				
0.3-3.0	614	1.63	*(100)	6
3.0-30	1842/f	4.89/f	*(900/f ²)	6
30-300	61.4	0.163	1.0	6
300-1500			f/300	6
1500-100,000			5	6
(B) Limits for General Population/Uncontrolled Exposure				
0.3-1.34	614	1.63	*(100)	30
1.34-30	824/f	2.19/f	*(180/f ²)	30
30-300	27.5	0.073	0.2	30
300-1500			f/1500	30
1500-100,000			1.0	30

Table 1

5. System Description and Setup

The system to be used for the near field power density measurement

- SPEAG DASY6 system
- SPEAG cDASY6 5G module software
- EUmmWVx probe
- 5G Phantom cover



5.1 Test Site Location

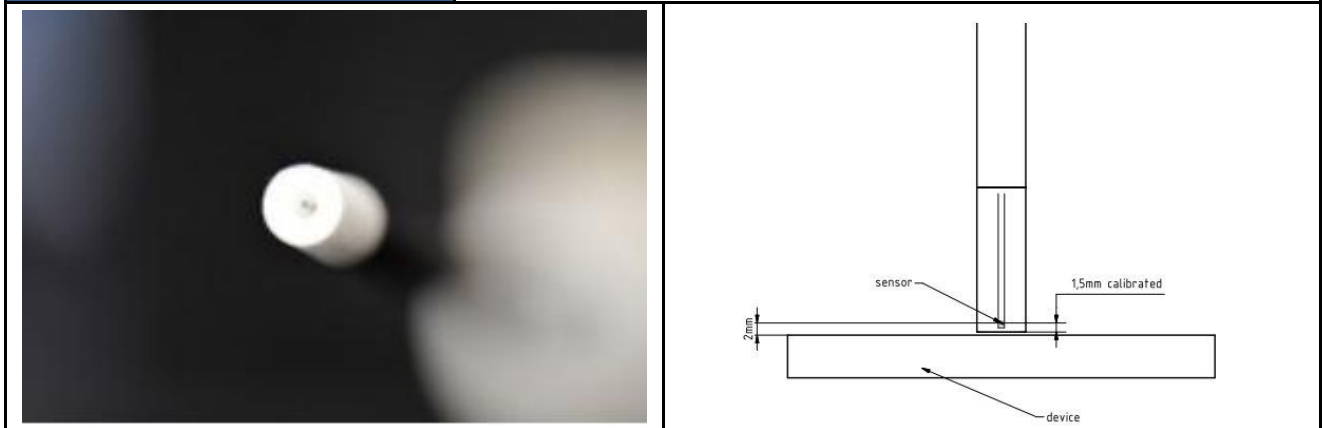
Sporton Lab and below test site location are accredited to ISO 17025 by Taiwan Accreditation Foundation (TAF code: 1190) and the FCC designation No. TW1190 under the FCC 2.948(e) by Mutual Recognition Agreement (MRA) in FCC test.

Test Site	SPORTON INTERNATIONAL INC. EMC & Wireless Communications Laboratory
Test Site Location	TW1190 No. 52, Huaya 1st Rd., Guishan Dist., Taoyuan City 333, CHINESE TAIPEI
Test Site No.	SAR06-HY

5.2 EUmmWave Probe / E-Field 5G Probe

The probe design allows measurements at distances as small as 2 mm from the sensors to the surface of the device under test (DUT). The typical sensor to probe tip distance is 1.5 mm.

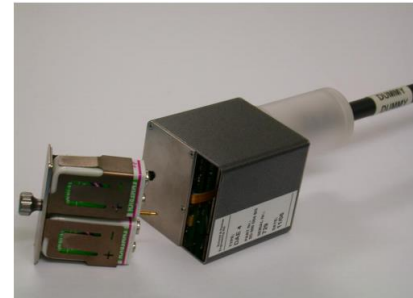
Frequency	750 MHz – 110 GHz
Probe Overall Length	320 mm
Probe Body Diameter	8.0 mm
Tip Length	23.0 mm
Tip Diameter	8.0 mm
Probe's two dipoles length	0.9 mm – Diode loaded
Dynamic Range	< 20 V/m - 10000 V/m with PRE-10 (min < 50 V/m - 3000 V/m)
Position Precision	< 0.2 mm
Distance between diode sensors and probe's tip	1.5 mm
Minimum Mechanical separation between probe tip and a Surface	0.5 mm
Applications	E-field measurements of 5G devices and other mm-wave transmitters operating above 10GHz in < 2 mm distance from device (free-space) Power density, H-field and far-field analysis using total field reconstruction.
Compatibility	cDASY6 + 5G-Module SW1.0 and higher



5.3 Data Acquisition Electronics (DAE)

The data acquisition electronics (DAE) consists of a highly sensitive electrometer-grade preamplifier with auto-zeroing, a channel and gain-switching multiplexer, a fast 16 bit AD-converter and a command decoder and control logic unit. Transmission to the measurement server is accomplished through an optical downlink for data and status information as well as an optical uplink for commands and the clock.

The input impedance of the DAE is 200 MOhm; the inputs are symmetrical and floating. Common mode rejection is above 80 dB.



5.4 Scan configuration

Fine-resolution scans on 2 different planes are performed to reconstruct the E- and H-fields as well as the power density; the z-distance between the 2 planes is set to $\lambda/4$.

The (x, y) grid step is also set $\lambda/4$, the grid extent is set to sufficiently large to identify the field pattern and the peak.

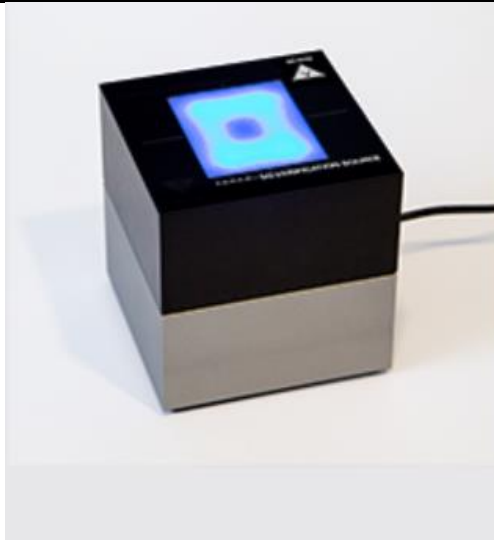
6. Test Equipment List

Manufacturer	Name of Equipment	Type/Model	Serial Number	Calibration	
				Last Cal.	Due Date
SPEAG	5G Verification Source	30GHz	1007	Nov. 15, 2021	Nov. 14, 2022
SPEAG	EUmmWV Probe Tip Protection	EUmmWV4	9441	Nov. 24, 2021	Nov. 23, 2022
SPEAG	EUmmWV Probe Tip Protection	EUmmWV4	9461	Oct. 22, 2021	Oct. 21, 2022
SPEAG	Data Acquisition Electronics	DAE4	699	Feb. 24, 2022	Feb. 23, 2023
SPEAG	Data Acquisition Electronics	DAE4	778	May. 21, 2021	May. 20, 2022
TESTO	Hygro meter	608-H1	45256952	Oct. 29, 2021	Oct. 28, 2022
TESTO	Hygro meter	608-H1	45256953	Oct. 29, 2021	Oct. 28, 2022
Aglient	Spectrum Analyzer	E4408B	MY44211028	Aug. 19, 2021	Aug. 18, 2022
Custom Microwave	Standard Horn antenna	M15RH	V91113-A	NCR	NCR

7. System Verification Source

The System Verification sources at 30 GHz and above comprise horn-antennas and very stable signal generators.

Model	Ka-band horn antenna
Calibrated frequency:	30 GHz at 10mm from the case surface
Frequency accuracy	± 100 MHz
E-field polarization	linear
Harmonics	-20 dBc
Total radiated power	14 dBm
Power stability	0.05 dB
Power consumption	5 W
Size	00 x 100 x 100 mm
Weight	1 kg



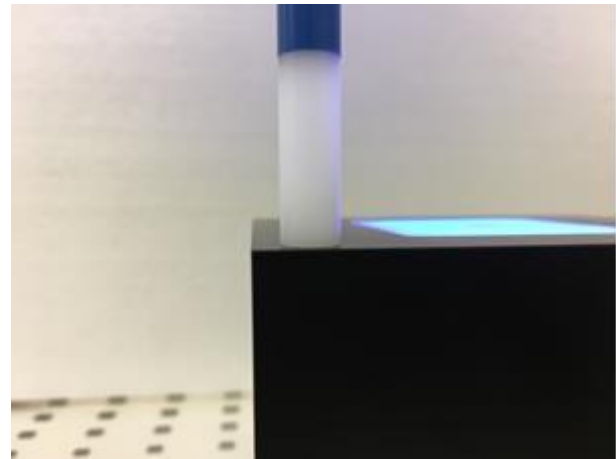
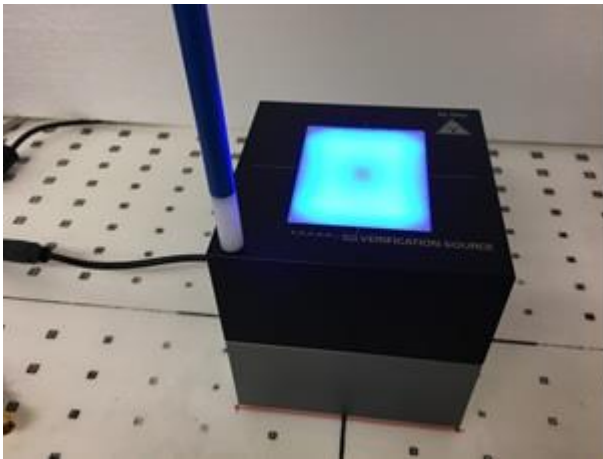
8. Power Density System Verification

The system performance check verifies that the system operates within its specifications.

The EUT is replaced by a calibrated source, the same spatial resolution, measurement region and the test separation used in the calibration was applied to system check. Through visual inspection into the measured power density distribution, both spatially (shape) and numerically (level) have no noticeable difference. The measured results should be within 0.66dB of the calibrated targets.

Frequency [GHz]	Grid step	Grid extent X/Y [mm]	Measurement points
10	0.25 ($\frac{\lambda}{4}$)	120/120	16 × 16
30	0.25 ($\frac{\lambda}{4}$)	60/60	24 × 24
60	0.25 ($\frac{\lambda}{4}$)	32.5/32.5	26 × 26
90	0.25 ($\frac{\lambda}{4}$)	30/30	36 × 36

Settings for measurement of verification sources



Verification Setup photo

9. System Verification Results

Test Site	Frequency (GHz)	5G Verification Source	Probe S/N	DAE S/N	Distance (mm)	Measured 4 cm ² (W/m ²)	Targeted 4 cm ² (W/m ²)	Deviation (dB)	Date
SAR06-HY	30G	30GHz_1007	9441	778	10	32.7	35.9	-0.41	2022/4/2
SAR06-HY	30G	30GHz_1007	9461	699	10	32.1	35.9	-0.49	2022/4/21

9.1 Computation of the Electric Field Polarization Ellipse

For the numerical description of an arbitrarily oriented ellipse in three-dimensional space, five parameters are needed: the semi-major axis (a), the semi-minor axis (b), two angles describing the orientation of the normal vector of the ellipse (ϕ , θ), and one angle describing the tilt of the semi-major axis (ψ). For the two extreme cases, i.e., circular and linear polarizations, three parameters only (a , ϕ and θ) are sufficient for the description of the incident field.

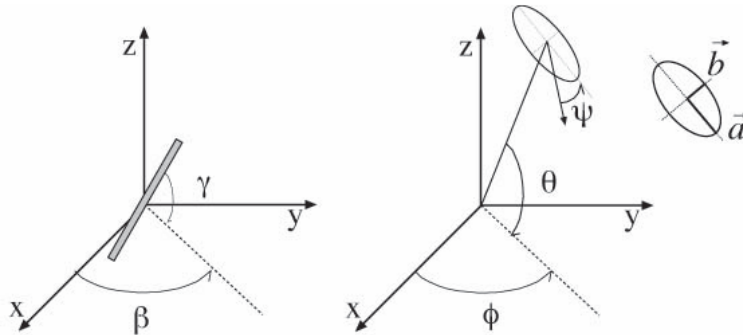


Illustration of the angles used for the numerical description of the sensor and the orientation of an ellipse in 3-D space.

For the reconstruction of the ellipse parameters from measured data, the problem can be reformulated as a nonlinear search problem. The semi-major and semi-minor axes of an elliptical field can be expressed as functions of the three angles (ϕ , θ and ψ). The parameters can be uniquely determined towards minimizing the error based on least-squares for the given set of angles and the measured data. In this way, the number of free parameters is reduced from five to three, which means that at least three sensor readings are necessary to gain sufficient information for the reconstruction of the ellipse parameters. However, to suppress the noise and increase the reconstruction accuracy, it is desirable that the system of equations be over determined. The solution to use a probe consisting of two sensors angled by r_1 and r_2 toward the probe axis and to perform measurements at three angular positions of the probe, i.e., at β_1 , β_2 and β_3 , results in over-determinations by a factor of two. If there is a need for more information or increased accuracy, more rotation angles can be added. The reconstruction of the ellipse parameters can be separated into linear and non-linear parts that are best solved by the Givens algorithm combined with a downhill simplex algorithm. To minimize the mutual coupling, sensor angles are set with a shift of 90 degree ($r_2 = r_1 + 90$ degree), and to simplify, the first rotation angle of the probe (β_1) can be set to 0 degree.

9.2 Total Field and Power Flux Density Reconstruction

Computation of the power density in general requires knowledge of the electric and magnetic field amplitudes and phases in the plane of incidence. Reconstruction of these quantities from pseudo-vector E-field measurements is feasible, as they are constrained by Maxwell's equations. SPEAG have developed a reconstruction approach based on the Gerchberg-Saxton algorithm, which benefits from the availability of the E-field polarization ellipse information obtained with the EUmmWV2 probe.

The average of the reconstructed power density is evaluated over a circular area in each measurement plane. Two average power density values can be computed, the average total power density and the average incident power density, and the average total power density is used to determine compliance.

- $|Re\{S\}|$ is the total Poynting vector
- $n \cdot Re\{S\}$ is the normal Poynting vector

The software post-processing reports to values, "S avg tot" and "S avg inc". "S avg tot" represents average total power density (all three xyz components included), and "S avg inc" represents average normal power density. The average total power density "S avg tot" is reported to determine the device compliance.

9.3 Test Positions

Band	Antenna Module	Measurement Plane					
		S1(Front) 2mm	S2(Back) 2mm	S3(Right) 2mm	S4(Left) 2mm	S5(Top) 2mm	S6(Bottom) 2mm
5G NR Band 258/260261	Plane A sub-module	v	v	v	x	v	x
	Plane B sub-module	v	v	v	x	v	x

From the Part 0 and simulation report, beam IDs with highest PD and corresponding input power limit were selected to be tested for each antenna module and for each frequency band.

10. RF Exposure Evaluation Results

1. The PD test was performed of a 2mm separation between sensor and EUT surface (the probe tip is 0.5mm to the EUT surface), 2 mm separation distance PD testing.
2. According to TCBC Workshop in October 2018, 4 cm² averaging area are used.
3. This device is enabled with Samsung S.LSI TAS feature, S.LSI TAS will manage and ensure LTE and 5G simultaneous transmission is compliant. The validation of the time-averaging algorithm and compliance under the Tx varying transmission scenario for WWAN technologies are reported in Part 2 report.
4. Pimit parameter for 5G mmW NR radio was calculated in RF Exposure Part 0 test report.
5. According the KDB inquiry guidance, the back surface was measured on the camera bump 2 mm surface, and reporting simulation PD at 2 mm from antenna-adjacent housing.
6. TAS algorithm makes use of the target power per slot in determining consumed SAR. The EIRP control can maintain the required amount of power for either CW tone or actual waveform to ensure the accuracy of actual transmit power. Plimit derived from CW tone signals can be confirmed to apply irrespective of the waveform ,therefore the device was configured to transmit CW wave signal for testing.
7. Run PD test, from the beam ID with the highest simulated for selected side
 - a. Horizontal polarization (H-only), CW tone signal.
 - b. Vertical polarization (V-only), CW tone signal.
 - c. Horizontal + Vertical polarization (H+V) , CW tone signal
 - d. If step b to c result > 50% limit, then repeat for 2nd highest beam ID. If 2nd beam ID result is also > 50% limit, then repeat for 3rd beam ID
 - e. For Maximum among 2)–3), test low and high channel
 - f. For Maximum among 2)–4), test other sides, which is within 2.5 cm from the mmwave antenna module
 - g. Apply the ratio from simulation to scale PD values@2 mm separation distance to PD values@10 mm separation distance.

Repeat steps a)-f) for the rest of the bands and plane
8. It's illustrated in Part 0 report that, for 5G mmW NR since there is total design-related uncertainty arising\ from TxAGC and device-to-device variation, the worst-case RF exposure should be determined by accounting for this device uncertainty of 2.3 dB, as well as PD design target of 4.42 W/m². Therefore, 5G mmW NR RF exposure for this DUT is evaluated by reported PD calculated as:

$$\text{Reported PD} = \text{PD design target} + 2.3 \text{ dB} = 7.5 \text{ W/m}^2 = 0.75 \text{ mW/cm}^2$$



Test Number	Antenna Module	H	V	Band	Frequency (GHz)	Exposure Surface	Plimit (dBm)	Test Separation (mm)	Modulation	Epeak [V/m]	Hpeak [A/m]	Measured results Savg inc 4cm^2 (W/m2)	Measured results Savg tot 4cm^2 (W/m2)
	Plane A sub-module	4	-	n258	24.75	Top (S5)	9.17	2mm	CW	45.6	0.120	1.12	1.50
	Plane A sub-module	-	2	n258	24.75	Top (S5)	9.17	2mm	CW	39.5	0.116	0.80	1.07
	Plane A sub-module	4	4	n258	24.75	Top (S5)	9.17	2mm	CW	67.7	0.173	1.93	2.44
	Plane A sub-module	2	2	n258	24.25	Top (S5)	9.17	2mm	CW	57.5	0.160	1.90	2.53
01	Plane A sub-module	3	3	n258	25.25	Top (S5)	9.17	2mm	CW	76.9	0.191	3.41	4.26
	Plane A sub-module	3	3	n258	25.25	Front (S1)	9.17	2mm	CW	57.7	0.153	1.81	2.35
	Plane A sub-module	6	6	n258	25.25	Back (S2)	9.17	2mm	CW	31.1	0.091	0.754	0.82
	Plane A sub-module	0	0	n258	25.25	Right (S3)	9.17	2mm	CW	21.7	0.053	0.462	0.507
	Plane B sub-module	1	-	n258	24.75	Back (S2)	8.02	2mm	CW	42.8	0.098	0.87	1.18
	Plane B sub-module	-	4	n258	24.75	Back (S2)	8.02	2mm	CW	37.5	0.097	0.981	1.16
	Plane B sub-module	1	1	n258	24.75	Back (S2)	8.02	2mm	CW	39.7	0.105	0.952	1.19
	Plane B sub-module	0	0	n258	24.25	Back (S2)	8.02	2mm	CW	40.5	0.119	1.21	1.51
	Plane B sub-module	1	1	n258	25.25	Back (S2)	8.02	2mm	CW	56.8	0.174	1.97	2.56
	Plane B sub-module	5	5	n258	25.25	Front (S1)	8.02	2mm	CW	20	0.051	0.294	0.343
	Plane B sub-module	0	0	n258	25.25	Right (S3)	8.02	2mm	CW	16.6	0.044	0.213	0.237
	Plane B sub-module	4	4	n258	25.25	Top (S5)	8.02	2mm	CW	25.7	0.068	0.422	0.483
	Plane A sub-module	1	-	n260	38.5	Top (S5)	12.66	2mm	CW	71.8	0.196	1.79	2.28
	Plane A sub-module	-	5	n260	38.5	Top (S5)	12.66	2mm	CW	69.7	0.165	1.49	1.84
	Plane A sub-module	6	6	n260	38.5	Top (S5)	12.66	2mm	CW	95.7	0.256	3.39	4.50
02	Plane A sub-module	1	1	n260	37.0	Top (S5)	12.66	2mm	CW	125	0.344	4.25	5.37
	Plane A sub-module	3	3	n260	40.0	Top (S5)	12.66	2mm	CW	62.3	0.166	2.00	2.27
	Plane A sub-module	1	1	n260	37.0	Front (S1)	12.66	2mm	CW	40.2	0.141	1.04	1.32
	Plane A sub-module	4	4	n260	37.0	Back (S2)	12.66	2mm	CW	23.3	0.068	0.441	0.541
	Plane A sub-module	0	0	n260	37.0	Right (S3)	12.66	2mm	CW	31.8	0.094	1.38	1.50
	Plane B sub-module	4	-	n260	38.5	Back (S2)	12.02	2mm	CW	42.6	0.118	0.895	1.07
	Plane B sub-module	-	2	n260	38.5	Back (S2)	12.02	2mm	CW	49.2	0.132	0.982	1.08
	Plane B sub-module	2	2	n260	38.5	Back (S2)	12.02	2mm	CW	52.5	0.135	1.31	1.55
	Plane B sub-module	4	4	n260	37.0	Back (S2)	12.02	2mm	CW	29.7	0.073	0.70	0.784
	Plane B sub-module	1	1	n260	40.0	Back (S2)	12.02	2mm	CW	62.6	0.163	1.08	1.27
	Plane B sub-module	5	5	n260	38.5	Front (S1)	12.02	2mm	CW	17.2	0.043	0.174	0.215
	Plane B sub-module	0	0	n260	38.5	Right (S3)	12.02	2mm	CW	21.1	0.056	0.474	0.558
	Plane B sub-module	2	2	n260	38.5	Top (S5)	12.02	2mm	CW	30.5	0.075	0.518	0.598
	Plane A sub-module	3	-	n261	27.925	Top (S5)	12.32	2mm	CW	60.9	0.15	1.70	2.12
	Plane A sub-module	-	4	n261	27.925	Top (S5)	12.32	2mm	CW	54.2	0.152	1.54	1.85
	Plane A sub-module	3	3	n261	27.925	Top (S5)	12.32	2mm	CW	68.5	0.194	2.71	3.61
	Plane A sub-module	3	3	n261	27.50	Top (S5)	12.32	2mm	CW	69.8	0.161	1.92	2.54
03	Plane A sub-module	4	4	n261	28.35	Top (S5)	12.32	2mm	CW	80.6	0.204	2.96	3.83
	Plane A sub-module	4	4	n261	28.35	Front (S1)	12.32	2mm	CW	39.3	0.11	1.65	1.81
	Plane A sub-module	1	1	n261	28.35	Back (S2)	12.32	2mm	CW	34.1	0.084	0.789	0.94
	Plane A sub-module	6	6	n261	28.35	Right (S3)	12.32	2mm	CW	14.3	0.038	0.153	0.177
	Plane B sub-module	2	-	n261	27.925	Back (S2)	10.19	2mm	CW	32.6	0.081	0.772	0.855
	Plane B sub-module	-	5	n261	27.925	Back (S2)	10.19	2mm	CW	28.1	0.074	0.596	0.74
	Plane B sub-module	1	1	n261	27.925	Back (S2)	10.19	2mm	CW	34.9	0.104	0.988	1.12
	Plane B sub-module	1	1	n261	27.50	Back (S2)	10.19	2mm	CW	38.1	0.097	1.05	1.23
	Plane B sub-module	1	1	n261	28.35	Back (S2)	10.19	2mm	CW	68.6	0.186	2.23	2.78
	Plane B sub-module	3	3	n261	28.35	Front (S1)	10.19	2mm	CW	18.8	0.045	0.285	0.319
	Plane B sub-module	1	1	n261	28.35	Right (S3)	10.19	2mm	CW	21.0	0.043	0.295	0.341
	Plane B sub-module	4	4	n261	28.35	Top (S5)	10.19	2mm	CW	41.2	0.103	1.32	1.41



11. 5G NR + LTE + WLAN + BT Sim-Tx analysis

In 5G NR + LTE + WLAN + BT simultaneous transmission, 5G NR FR2 and LTE transmission are managed and controlled by Samsung S.LSI TAS feature, while the RF exposure from WLAN and BT radios is managed using legacy approach, i.e., through a fixed power back-off if needed.

Since WLAN and BT do not employ time-averaging, 1gSAR and 10gSAR measurement for WLAN and BT need to be conducted at their corresponding rated power following current FCC test procedures to determine reported SAR values.

TAS managed and controlled for Multi-RATs (5GNR + LTE)

The power ratio factors are g_1 and g_2 for LTE and FR2 respectively. The main purpose of these power ratio factors is to split the available SAR budget among different RATs, so $g_1 + g_2 \leq 1$. The value of g_1 is computed based on the need of the LTE anchor and can be changed if the anchor changes its power request. Based on the SAR Budget portion allocated to the anchor, the value of g_2 will be computed. At steady state (where all RATs are being on for a while), the allocated power ratio factors will guarantee that the total exposure ratio never exceeds the highest exposure of either one.

The reported time-averaged PD is applicable for the worst-surface of the device, and for other surfaces the reported PD is determined as below

1. Calculate ratio of simulated PD for desired surface to simulated PD of worst surface for a given beam
 2. Repeat 1 to obtain ratios for all supported beams, and determine maximum ratio
 3. Repeat 1~2 to obtain the corresponding worst-case PD for other surfaces which are needed for TER analysis.
- *For body-worn and hotspot scenario, if SAR was measured at 15mm and 10mm, respectively, then the worst-case PD at 15mm and 10mm separation distance should be determined per surface as*
 - $15mm_worst_case_PD = PD_ratio_15mm_to_2mm * reported\ time-averaged\ PD$
 - $10mm_worst_case_PD = PD_ratio_10mm_to_2mm * reported\ time-averaged\ PD$



12. Standalone and Simultaneous-Tx combination

Exposure Condition	Tx mode	Capable TX Configurations	WWAN Power Index	WiFi Power Index	BT Power Index
Head	WWAN standalone	WWAN	Index 2		
	WiFi standalone	WiFi 2.4G SISO (Ant4 or Ant3)	Index 2	Index 1	
		WiFi 2.4G MIMO/CDD (Ant4+3)			
		WiFi 5G MIMO (Ant8+3)			
		WiFi 6E MIMO (Ant8+3)			
		WiFi 2.4G SISO (Ant4 or Ant3) + WiFi 5G MIMO (Ant8+3)			
		WiFi 2.4G MIMO (Ant4+3) + WiFi 5G MIMO (Ant8+3)			
		WiFi 2.4G SISO (Ant4 or Ant3) + WiFi 6E MIMO (Ant8+3)			
		WiFi 2.4G MIMO (Ant4+3) + WiFi 6E MIMO (Ant8+3)			
	WiFi +BT	WiFi 5G MIMO (Ant8+3) + Bluetooth (Ant4)	Index 3	Index 1	Index 1
		WiFi 5G MIMO (Ant8+3) + Bluetooth (Ant3)			
		WiFi 5G MIMO (Ant8+3) + Bluetooth (Ant4+3)			
		WiFi 6E MIMO (Ant8+3) + Bluetooth (Ant4)			
		WiFi 6E MIMO (Ant8+3) + Bluetooth (Ant3)			
		WiFi 6E MIMO (Ant8+3) + Bluetooth (Ant4+3)			
	WWAN + WiFi	WWAN + WiFi 2.4G SISO (Ant4 or Ant3)	Index 3	Index 3	Index 4
		WWAN + WiFi 2.4G MIMO/CDD (Ant4+3)			
		WWAN + WiFi 5G MIMO (Ant8+3)			
		WWAN + WiFi 6E MIMO (Ant8+3)			
		WWAN + WiFi 2.4G SISO (Ant4 or Ant3) + WiFi 5G MIMO (Ant8+3)			
		WWAN + WiFi 2.4G MIMO (Ant4+3) + WiFi 5G MIMO (Ant8+3)			
		WWAN + WiFi 2.4G SISO (Ant4 or Ant3) + WiFi 6E MIMO (Ant8+3)			
		WWAN + WiFi 2.4G MIMO (Ant4+3) + WiFi 6E MIMO (Ant8+3)			
	WWAN + BT	WWAN + Bluetooth (Ant4)	Index 3		Index 1
		WWAN + Bluetooth (Ant3)			
		WWAN + Bluetooth (Ant4+3)			
	WWAN + WiFi +BT	WWAN + WiFi 5G MIMO (Ant8+3) + Bluetooth (Ant4)	Index 3	Index 3	Index 1
		WWAN + WiFi 5G MIMO (Ant8+3) + Bluetooth (Ant3)			
		WWAN + WiFi 5G MIMO (Ant8+3) + Bluetooth (Ant4+3)			
		WWAN + WiFi 6E MIMO (Ant8+3) + Bluetooth (Ant4)			
		WWAN + WiFi 6E MIMO (Ant8+3) + Bluetooth (Ant3)			
		WWAN + WiFi 6E MIMO (Ant8+3) + Bluetooth (Ant4+3)			



Exposure Condition	Tx mode	Capable TX Configurations	WWAN Power Index	WiFi Power Index	BT Power Index
Body	WWAN standalone	WWAN	Index 5		
	WiFi standalone	WiFi 2.4G SISO (Ant4 or Ant3)	Index 5	Index 5	Index 6 (RSDB)
		WiFi 2.4G MIMO/CDD (Ant4+3)			
		WiFi 5G MIMO (Ant8+3)			
		WiFi 6E MIMO (Ant8+3)			
		WiFi 2.4G SISO (Ant4 or Ant3) + WiFi 5G MIMO (Ant8+3)			
		WiFi 2.4G MIMO (Ant4+3) + WiFi 5G MIMO (Ant8+3)			
		WiFi 2.4G SISO (Ant4 or Ant3) + WiFi 6E MIMO (Ant8+3)			
		WiFi 2.4G MIMO (Ant4+3) + WiFi 6E MIMO (Ant8+3)			
	BT standalone	Bluetooth (Ant4)	Index 2		
		Bluetooth (Ant3)			
		Bluetooth (Ant4+3)			
	WiFi +BT	WiFi 5G MIMO (Ant8+3) + Bluetooth (Ant4)	Index 5	Index 3	
		WiFi 5G MIMO (Ant8+3) + Bluetooth (Ant3)			
		WiFi 5G MIMO (Ant8+3) + Bluetooth (Ant4+3)			
		WiFi 6E MIMO (Ant8+3) + Bluetooth (Ant4)			
		WiFi 6E MIMO (Ant8+3) + Bluetooth (Ant3)			
		WiFi 6E MIMO (Ant8+3) + Bluetooth (Ant4+3)			
	WWAN + WiFi	WWAN + WiFi 2.4G SISO (Ant4 or Ant3)	Index 4 / 6	Index 7	Index 8 (RSDB)
		WWAN + WiFi 2.4G MIMO/CDD (Ant4+3)			
		WWAN + WiFi 5G MIMO (Ant8+3)			
		WWAN + WiFi 6E MIMO (Ant8+3)			
		WWAN + WiFi 2.4G SISO (Ant4 or Ant3) + WiFi 5G MIMO (Ant8+3)			
		WWAN + WiFi 2.4G MIMO (Ant4+3) + WiFi 5G MIMO (Ant8+3)			
		WWAN + WiFi 2.4G SISO (Ant4 or Ant3) + WiFi 6E MIMO (Ant8+3)			
		WWAN + WiFi 2.4G MIMO (Ant4+3) + WiFi 6E MIMO (Ant8+3)			
	WWAN + BT	WWAN + Bluetooth (Ant4)	Index 4 / 6	Index 3	
		WWAN + Bluetooth (Ant3)			
		WWAN + Bluetooth (Ant4+3)			
	WWAN + WiFi +BT	WWAN + WiFi 5G MIMO (Ant8+3) + Bluetooth (Ant4)	Index 4 / 6	Index 9	Index 4
WWAN + WiFi 5G MIMO (Ant8+3) + Bluetooth (Ant3)					
WWAN + WiFi 5G MIMO (Ant8+3) + Bluetooth (Ant4+3)					
WWAN + WiFi 6E MIMO (Ant8+3) + Bluetooth (Ant4)					
WWAN + WiFi 6E MIMO (Ant8+3) + Bluetooth (Ant3)					
WWAN + WiFi 6E MIMO (Ant8+3) + Bluetooth (Ant4+3)					
Mobile Conditions	All combinations	Index 1	Index 0	Index 0	

General Note:

1. Simultaneous operation at maximum power levels when the device is neither against the body nor the head (i.e. in a mobile RF exposure condition) is addressed in Sporton's RF Exposure report FA1O2919-05A
2. The WLAN and Bluetooth SAR test results, referenced from the report of FCC ID: A4RGE2AE (Sporton SAR Report No. FA1O2919-05E).
3. The Sim-Tx configuration combination include in operation description will be match the title in the below Sum-Tx evaluation table
4. For LTE+5G NR+WiFi+BT, due to the TAS control, simultaneous transmission compliance can be assessed on LTE+WiFi/BT and 5G NR +WiFi/BT, and the validation of the time-averaging algorithm and compliance under the Tx varying transmission scenario for WWAN technologies are reported in Part 2 report. For 5G NR FR2 with WiFi, total exposure ratio is calculated as below formula, LTE/FR1 + WIFI simultaneous transmission analysis referring from the report of FCC ID: A4RGE2AE (Sporton SAR Report No. FA1O2919-05E).

The \sum of (the highest measured or estimated SAR for each standalone antenna configuration, adjusted for maximum tune-up tolerance) / 1.6 W/kg] + \sum of MPE ratios] is \leq 1.0.



12.1 Simultaneous transmission analysis for WiFi/BT + 5G NR

NR Band	Antenna Module	Exposure condition	Surface	Evaluation	Ratio*	PD_Design Target +Total uncertainty	PD_Design Target +Total uncertainty)*Ratio
				Distance		(W/m^2)	(W/m^2)
				(mm)			
n258	Plane A sub-module	Extremity	Front Surface	2 mm	0.819	7.5	6.14
			Back Surface	2 mm	0.988	7.5	7.41
			Right side	2 mm	0.390	7.5	2.92
			Left side	2 mm	Excluded		
			Top side	2 mm	1.000	7.5	7.50
			Bottom side	2 mm	Excluded		
n258	Plane B sub-module		Front Surface	2 mm	0.118	7.5	0.89
			Back Surface	2 mm	1.000	7.5	7.50
			Right side	2 mm	0.298	7.5	2.23
			Left side	2 mm	Excluded		
			Top side	2 mm	0.449	7.5	3.37
			Bottom side	2 mm	Excluded		
n260	Plane A sub-module		Front Surface	2 mm	0.703	7.5	5.27
			Back Surface	2 mm	0.462	7.5	3.46
			Right side	2 mm	0.321	7.5	2.41
			Left side	2 mm	Excluded		
			Top side	2 mm	1.000	7.5	7.50
			Bottom side	2 mm	Excluded		
n260	Plane B sub-module	Front Surface	2 mm	0.059	7.5	0.44	
		Back Surface	2 mm	1.000	7.5	7.50	
		Right side	2 mm	0.238	7.5	1.79	
		Left side	2 mm	Excluded			
		Top side	2 mm	0.334	7.5	2.51	
		Bottom side	2 mm	Excluded			
n261	Plane A sub-module	Front Surface	2 mm	0.703	7.5	5.27	
		Back Surface	2 mm	0.803	7.5	6.02	
		Right side	2 mm	0.274	7.5	2.05	
		Left side	2 mm	Excluded			
		Top side	2 mm	1.000	7.5	7.50	
		Bottom side	2 mm	Excluded			
n261	Plane B sub-module	Front Surface	2 mm	0.112	7.5	0.84	
		Back Surface	2 mm	1.000	7.5	7.50	
		Right side	2 mm	0.343	7.5	2.57	
		Left side	2 mm	Excluded			
		Top side	2 mm	0.399	7.5	2.99	
		Bottom side	2 mm	Excluded			



NR Band	Antenna Module	Exposure condition	Surface	Evaluation	Ratio*	PD_Design Target +Total uncertainty (W/m ²)	PD_Design Target +Total uncertainty)*Ratio (W/m ²)
				Distance			
				(mm)			
n258	Plane A sub-module	Head	Front Surface	2 mm	0.819	7.5	6.14
n258	Plane B sub-module		Front Surface	2 mm	0.118	7.5	0.89
n260	Plane A sub-module		Front Surface	2 mm	0.703	7.5	5.27
n260	Plane B sub-module		Front Surface	2 mm	0.059	7.5	0.44
n261	Plane A sub-module		Front Surface	2 mm	0.703	7.5	5.27
n261	Plane B sub-module		Front Surface	2 mm	0.112	7.5	0.84

NR Band	Antenna Module	Exposure condition	Surface	Evaluation	Ratio*	PD_Design Target +Total uncertainty (W/m ²)	PD_Design Target +Total uncertainty)*Ratio (W/m ²)
				Distance			
				(mm)			
n258	Plane A sub-module	Body Worn/Hotspot	worst-surface	10 mm	0.626	7.5	4.69
n258	Plane B sub-module		worst-surface	10 mm	0.575	7.5	4.31
n260	Plane A sub-module		worst-surface	10 mm	0.676	7.5	5.07
n260	Plane B sub-module		worst-surface	10 mm	0.476	7.5	3.57
n261	Plane A sub-module		worst-surface	10 mm	0.649	7.5	4.87
n261	Plane B sub-module		worst-surface	10 mm	0.540	7.5	4.05

*Ratio is highest ratio of (PD on desired exposure plane) / (PD on worst-surface) out of all beams and out of all channels illustrated in Power Density Simulation Report.



<Head Exposure Condition>

<5G NR FR2, WLAN Index 3, BT Index 1>

WWAN Band	Exposure Position	1	2	3	4	5	6	7	8	Reported SAR/1.6 + PD/10 Summation Total Exposure ratio						
		2.4GHz WLAN Ant 4	2.4GHz WLAN Ant 3	2.4GHz WLAN Ant 4+3	5/6GHz WLAN Ant 4+8	Bluetooth Ant 4	Bluetooth Ant 3	Bluetooth Ant 3+4	PD	1+8 Summed Ratio	2+8 Summed Ratio	3+8 Summed Ratio	4+5+8 Summed Ratio	4+6+8 Summed Ratio	4+7+8 Summed Ratio	
		1g SAR (W/kg)	1g SAR (W/kg)	1g SAR (W/kg)	1g SAR (W/kg)	1g SAR (W/kg)	1g SAR (W/kg)	1g SAR (W/kg)	4cm ² (W/m ²)							
n258	Plane A sub-module	Right Cheek	0.136	0.517	0.388	0.390	0.004	0.132	0.070	6.140	0.699	0.937	0.857	0.860	0.940	0.902
		Right Tilted	0.204	0.071	0.219	0.355	0.001	0.003	0.092	6.140	0.742	0.658	0.751	0.837	0.838	0.893
		Left Cheek	0.513	0.366	0.574	0.396	0.114	0.194	0.093	6.140	0.935	0.843	0.973	0.933	0.983	0.920
		Left Tilted	0.529	0.053	0.507	0.417	0.196	0.003	0.198	6.140	0.945	0.647	0.931	0.997	0.877	0.998
n258	Plane B sub-module	Right Cheek	0.136	0.517	0.388	0.390	0.004	0.132	0.070	0.890	0.174	0.412	0.332	0.335	0.415	0.377
		Right Tilted	0.204	0.071	0.219	0.355	0.001	0.003	0.092	0.890	0.217	0.133	0.226	0.312	0.313	0.368
		Left Cheek	0.513	0.366	0.574	0.396	0.114	0.194	0.093	0.890	0.410	0.318	0.448	0.408	0.458	0.395
		Left Tilted	0.529	0.053	0.507	0.417	0.196	0.003	0.198	0.890	0.420	0.122	0.406	0.472	0.352	0.473
n260	Plane A sub-module	Right Cheek	0.136	0.517	0.388	0.390	0.004	0.132	0.070	5.270	0.612	0.850	0.770	0.773	0.853	0.815
		Right Tilted	0.204	0.071	0.219	0.355	0.001	0.003	0.092	5.270	0.655	0.571	0.664	0.750	0.751	0.806
		Left Cheek	0.513	0.366	0.574	0.396	0.114	0.194	0.093	5.270	0.848	0.756	0.886	0.846	0.896	0.833
		Left Tilted	0.529	0.053	0.507	0.417	0.196	0.003	0.198	5.270	0.858	0.560	0.844	0.910	0.790	0.911
n260	Plane B sub-module	Right Cheek	0.136	0.517	0.388	0.390	0.004	0.132	0.070	0.440	0.129	0.367	0.287	0.290	0.370	0.332
		Right Tilted	0.204	0.071	0.219	0.355	0.001	0.003	0.092	0.440	0.172	0.088	0.181	0.267	0.268	0.323
		Left Cheek	0.513	0.366	0.574	0.396	0.114	0.194	0.093	0.440	0.365	0.273	0.403	0.363	0.413	0.350
		Left Tilted	0.529	0.053	0.507	0.417	0.196	0.003	0.198	0.440	0.375	0.077	0.361	0.427	0.307	0.428
n261	Plane A sub-module	Right Cheek	0.136	0.517	0.388	0.390	0.004	0.132	0.070	5.270	0.612	0.850	0.770	0.773	0.853	0.815
		Right Tilted	0.204	0.071	0.219	0.355	0.001	0.003	0.092	5.270	0.655	0.571	0.664	0.750	0.751	0.806
		Left Cheek	0.513	0.366	0.574	0.396	0.114	0.194	0.093	5.270	0.848	0.756	0.886	0.846	0.896	0.833
		Left Tilted	0.529	0.053	0.507	0.417	0.196	0.003	0.198	5.270	0.858	0.560	0.844	0.910	0.790	0.911
n261	Plane B sub-module	Right Cheek	0.136	0.517	0.388	0.390	0.004	0.132	0.070	0.840	0.169	0.407	0.327	0.330	0.410	0.372
		Right Tilted	0.204	0.071	0.219	0.355	0.001	0.003	0.092	0.840	0.212	0.128	0.221	0.307	0.308	0.363
		Left Cheek	0.513	0.366	0.574	0.396	0.114	0.194	0.093	0.840	0.405	0.313	0.443	0.403	0.453	0.390
		Left Tilted	0.529	0.053	0.507	0.417	0.196	0.003	0.198	0.840	0.415	0.117	0.401	0.467	0.347	0.468



<5G NR FR2, WLAN Index 4>

WWAN Band		Exposure Position	1	2	3	4	5	Reported SAR/1.6 + PD/10 Summation Total Exposure ratio		
			2.4GHz WLAN Ant 4 1g SAR (W/kg)	2.4GHz WLAN Ant 3 1g SAR (W/kg)	2.4GHz WLAN Ant 4+3 1g SAR (W/kg)	5/6GHz WLAN Ant 4+8 1g SAR (W/kg)	PD 4cm ² (W/m ²)	3+4+5 Summed Ratio	1+4+5 Summed Ratio	2+4+5 Summed Ratio
n258	Plane A sub-module	Right Cheek	0.062	0.167	0.111	0.390	6.140	0.927	0.897	0.962
		Right Tilted	0.067	0.165	0.058	0.355	6.140	0.872	0.878	0.939
		Left Cheek	0.184	0.184	0.152	0.396	6.140	0.957	0.977	0.977
		Left Tilted	0.177	0.025	0.109	0.417	6.140	0.943	0.985	0.890
n258	Plane B sub-module	Right Cheek	0.062	0.167	0.111	0.390	0.890	0.402	0.372	0.437
		Right Tilted	0.067	0.165	0.058	0.355	0.890	0.347	0.353	0.414
		Left Cheek	0.184	0.184	0.152	0.396	0.890	0.432	0.452	0.452
		Left Tilted	0.177	0.025	0.109	0.417	0.890	0.418	0.460	0.365
n260	Plane A sub-module	Right Cheek	0.062	0.167	0.111	0.390	5.270	0.840	0.810	0.875
		Right Tilted	0.067	0.165	0.058	0.355	5.270	0.785	0.791	0.852
		Left Cheek	0.184	0.184	0.152	0.396	5.270	0.870	0.890	0.890
		Left Tilted	0.177	0.025	0.109	0.417	5.270	0.856	0.898	0.803
n260	Plane B sub-module	Right Cheek	0.062	0.167	0.111	0.390	0.440	0.357	0.327	0.392
		Right Tilted	0.067	0.165	0.058	0.355	0.440	0.302	0.308	0.369
		Left Cheek	0.184	0.184	0.152	0.396	0.440	0.387	0.407	0.407
		Left Tilted	0.177	0.025	0.109	0.417	0.440	0.373	0.415	0.320
n261	Plane A sub-module	Right Cheek	0.062	0.167	0.111	0.390	5.270	0.840	0.810	0.875
		Right Tilted	0.067	0.165	0.058	0.355	5.270	0.785	0.791	0.852
		Left Cheek	0.184	0.184	0.152	0.396	5.270	0.870	0.890	0.890
		Left Tilted	0.177	0.025	0.109	0.417	5.270	0.856	0.898	0.803
n261	Plane B sub-module	Right Cheek	0.062	0.167	0.111	0.390	0.840	0.397	0.367	0.432
		Right Tilted	0.067	0.165	0.058	0.355	0.840	0.342	0.348	0.409
		Left Cheek	0.184	0.184	0.152	0.396	0.840	0.427	0.447	0.447
		Left Tilted	0.177	0.025	0.109	0.417	0.840	0.413	0.455	0.360



<Hotspot Exposure Condition>

<5GNR FR2, WLAN Index 7>

WWAN Band		Exposure Position	1	2	3	4	5	Reported SAR/1.6 + PD/10 Summation Total Exposure ratio			
			2.4GHz WLAN Ant 4	2.4GHz WLAN Ant 3	2.4GHz WLAN Ant 4+3	5/6GHz WLAN Ant 4+8	PD	1+5 Summed Ratio	2+5 Summed Ratio	3+5 Summed Ratio	4+5 Summed Ratio
			1g SAR (W/kg)	1g SAR (W/kg)	1g SAR (W/kg)	1g SAR (W/kg)	4cm ² (W/m ²)				
n258	Plane A sub-module	Front	0.307	0.369	0.319	0.171	4.690	0.661	0.700	0.668	0.576
		Back	0.530	0.493	0.596	0.477	4.690	0.800	0.777	0.842	0.767
		Left side	0.001	0.673	0.679	0.113	4.690	0.470	0.890	0.893	0.540
		Right side	0.527	0.001	0.441	0.638	4.690	0.798	0.470	0.745	0.868
		Top side	0.410	0.001	0.575	0.227	4.690	0.725	0.470	0.828	0.611
		Bottom side					4.690	0.469	0.469	0.469	0.469
n258	Plane B sub-module	Front	0.307	0.369	0.319	0.171	4.310	0.623	0.662	0.630	0.538
		Back	0.530	0.493	0.596	0.477	4.310	0.762	0.739	0.804	0.729
		Left side	0.001	0.673	0.679	0.113	4.310	0.432	0.852	0.855	0.502
		Right side	0.527	0.001	0.441	0.638	4.310	0.760	0.432	0.707	0.830
		Top side	0.410	0.001	0.575	0.227	4.310	0.687	0.432	0.790	0.573
		Bottom side					4.310	0.431	0.431	0.431	0.431
n260	Plane A sub-module	Front	0.307	0.369	0.319	0.171	5.070	0.699	0.738	0.706	0.614
		Back	0.530	0.493	0.596	0.477	5.070	0.838	0.815	0.880	0.805
		Left side	0.001	0.673	0.679	0.113	5.070	0.508	0.928	0.931	0.578
		Right side	0.527	0.001	0.441	0.638	5.070	0.836	0.508	0.783	0.906
		Top side	0.410	0.001	0.575	0.227	5.070	0.763	0.508	0.866	0.649
		Bottom side					5.070	0.507	0.507	0.507	0.507
n260	Plane B sub-module	Front	0.307	0.369	0.319	0.171	3.570	0.549	0.588	0.556	0.464
		Back	0.530	0.493	0.596	0.477	3.570	0.688	0.665	0.730	0.655
		Left side	0.001	0.673	0.679	0.113	3.570	0.358	0.778	0.781	0.428
		Right side	0.527	0.001	0.441	0.638	3.570	0.686	0.358	0.633	0.756
		Top side	0.410	0.001	0.575	0.227	3.570	0.613	0.358	0.716	0.499
		Bottom side					3.570	0.357	0.357	0.357	0.357
n260	Plane A sub-module	Front	0.307	0.369	0.319	0.171	4.870	0.679	0.718	0.686	0.594
		Back	0.530	0.493	0.596	0.477	4.870	0.818	0.795	0.860	0.785
		Left side	0.001	0.673	0.679	0.113	4.870	0.488	0.908	0.911	0.558
		Right side	0.527	0.001	0.441	0.638	4.870	0.816	0.488	0.763	0.886
		Top side	0.410	0.001	0.575	0.227	4.870	0.743	0.488	0.846	0.629
		Bottom side					4.870	0.487	0.487	0.487	0.487
n261	Plane B sub-module	Front	0.307	0.369	0.319	0.171	4.050	0.597	0.636	0.604	0.512
		Back	0.530	0.493	0.596	0.477	4.050	0.736	0.713	0.778	0.703
		Left side	0.001	0.673	0.679	0.113	4.050	0.406	0.826	0.829	0.476
		Right side	0.527	0.001	0.441	0.638	4.050	0.734	0.406	0.681	0.804
		Top side	0.410	0.001	0.575	0.227	4.050	0.661	0.406	0.764	0.547
		Bottom side					4.050	0.405	0.405	0.405	0.405



<5G NR FR2, BT Index 3>

WWAN Band		Exposure Position	2	3	4	5	Reported SAR/1.6 + PD/10 Summation Total Exposure ratio		
			Bluetooth Ant 4	Bluetooth Ant 3	Bluetooth Ant 4+3	PD	2+5 Summed Ratio	3+5 Summed Ratio	4+5 Summed Ratio
			1g SAR (W/kg)	1g SAR (W/kg)	1g SAR (W/kg)	4cm ² (W/m ²)			
n258	Plane A sub-module	Front	0.165	0.231	0.128	4.690	0.572	0.613	0.549
		Back	0.293	0.292	0.191	4.690	0.652	0.652	0.588
		Left side	0.001	0.376	0.263	4.690	0.470	0.704	0.633
		Right side	0.406	0.002	0.124	4.690	0.723	0.470	0.547
		Top side	0.254	0.084	0.069	4.690	0.628	0.522	0.512
		Bottom side				4.690	0.469	0.469	0.469
n258	Plane B sub-module	Front	0.165	0.231	0.128	4.310	0.534	0.575	0.511
		Back	0.293	0.292	0.191	4.310	0.614	0.614	0.550
		Left side	0.001	0.376	0.263	4.310	0.432	0.666	0.595
		Right side	0.406	0.002	0.124	4.310	0.685	0.432	0.509
		Top side	0.254	0.084	0.069	4.310	0.590	0.484	0.474
		Bottom side				4.310	0.431	0.431	0.431
n260	Plane A sub-module	Front	0.165	0.231	0.128	5.070	0.610	0.651	0.587
		Back	0.293	0.292	0.191	5.070	0.690	0.690	0.626
		Left side	0.001	0.376	0.263	5.070	0.508	0.742	0.671
		Right side	0.406	0.002	0.124	5.070	0.761	0.508	0.585
		Top side	0.254	0.084	0.069	5.070	0.666	0.560	0.550
		Bottom side				5.070	0.507	0.507	0.507
n260	Plane B sub-module	Front	0.165	0.231	0.128	3.570	0.460	0.501	0.437
		Back	0.293	0.292	0.191	3.570	0.540	0.540	0.476
		Left side	0.001	0.376	0.263	3.570	0.358	0.592	0.521
		Right side	0.406	0.002	0.124	3.570	0.611	0.358	0.435
		Top side	0.254	0.084	0.069	3.570	0.516	0.410	0.400
		Bottom side				3.570	0.357	0.357	0.357
n261	Plane A sub-module	Front	0.165	0.231	0.128	4.870	0.590	0.631	0.567
		Back	0.293	0.292	0.191	4.870	0.670	0.670	0.606
		Left side	0.001	0.376	0.263	4.870	0.488	0.722	0.651
		Right side	0.406	0.002	0.124	4.870	0.741	0.488	0.565
		Top side	0.254	0.084	0.069	4.870	0.646	0.540	0.530
		Bottom side				4.870	0.487	0.487	0.487
n261	Plane B sub-module	Front	0.165	0.231	0.128	4.050	0.508	0.549	0.485
		Back	0.293	0.292	0.191	4.050	0.588	0.588	0.524
		Left side	0.001	0.376	0.263	4.050	0.406	0.640	0.569
		Right side	0.406	0.002	0.124	4.050	0.659	0.406	0.483
		Top side	0.254	0.084	0.069	4.050	0.564	0.458	0.448
		Bottom side				4.050	0.405	0.405	0.405



<5G NR FR2, WLAN Index 9, BT Index 4>

WWAN Band		Exposure Position	1	2	3	4	5	Reported SAR/1.6 + PD/10 Summation Total Exposure ratio		
			5G/6EHz WLAN Ant 4+8 1g SAR (W/kg)	Bluetooth Ant 4 1g SAR (W/kg)	Bluetooth Ant 3 1g SAR (W/kg)	Bluetooth Ant 4+3 1g SAR (W/kg)	PD 4cm ² (W/m ²)	1+2+5 Summed Ratio	1+3+5 Summed Ratio	1+4+5 Summed Ratio
n258	Plane A sub-module	Front	0.100	0.003	0.140	0.136	4.690	0.533	0.619	0.617
		Back	0.309	0.136	0.160	0.185	4.690	0.747	0.762	0.778
		Left side	0.121	0.003	0.228	0.226	4.690	0.547	0.687	0.686
		Right side	0.431	0.208	0.005	0.202	4.690	0.868	0.742	0.865
		Top side	0.207	0.107	0.006	0.098	4.690	0.665	0.602	0.660
		Bottom side					4.690	0.469	0.469	0.469
n258	Plane B sub-module	Front	0.100	0.003	0.140	0.136	4.310	0.495	0.581	0.579
		Back	0.309	0.136	0.160	0.185	4.310	0.709	0.724	0.740
		Left side	0.121	0.003	0.228	0.226	4.310	0.509	0.649	0.648
		Right side	0.431	0.208	0.005	0.202	4.310	0.830	0.704	0.827
		Top side	0.207	0.107	0.006	0.098	4.310	0.627	0.564	0.622
		Bottom side					4.310	0.431	0.431	0.431
n260	Plane A sub-module	Front	0.100	0.003	0.140	0.136	5.070	0.571	0.657	0.655
		Back	0.309	0.136	0.160	0.185	5.070	0.785	0.800	0.816
		Left side	0.121	0.003	0.228	0.226	5.070	0.585	0.725	0.724
		Right side	0.431	0.208	0.005	0.202	5.070	0.906	0.780	0.903
		Top side	0.207	0.107	0.006	0.098	5.070	0.703	0.640	0.698
		Bottom side					5.070	0.507	0.507	0.507
n260	Plane B sub-module	Front	0.100	0.003	0.140	0.136	3.570	0.421	0.507	0.505
		Back	0.309	0.136	0.160	0.185	3.570	0.635	0.650	0.666
		Left side	0.121	0.003	0.228	0.226	3.570	0.435	0.575	0.574
		Right side	0.431	0.208	0.005	0.202	3.570	0.756	0.630	0.753
		Top side	0.207	0.107	0.006	0.098	3.570	0.553	0.490	0.548
		Bottom side					3.570	0.357	0.357	0.357
n261	Plane A sub-module	Front	0.100	0.003	0.140	0.136	4.870	0.551	0.637	0.635
		Back	0.309	0.136	0.160	0.185	4.870	0.765	0.780	0.796
		Left side	0.121	0.003	0.228	0.226	4.870	0.565	0.705	0.704
		Right side	0.431	0.208	0.005	0.202	4.870	0.886	0.760	0.883
		Top side	0.207	0.107	0.006	0.098	4.870	0.683	0.620	0.678
		Bottom side					4.870	0.487	0.487	0.487
n261	Plane B sub-module	Front	0.100	0.003	0.140	0.136	4.050	0.469	0.555	0.553
		Back	0.309	0.136	0.160	0.185	4.050	0.683	0.698	0.714
		Left side	0.121	0.003	0.228	0.226	4.050	0.483	0.623	0.622
		Right side	0.431	0.208	0.005	0.202	4.050	0.804	0.678	0.801
		Top side	0.207	0.107	0.006	0.098	4.050	0.601	0.538	0.596
		Bottom side					4.050	0.405	0.405	0.405



<5GNR FR2, WLAN Index 8>

WWAN Band		Exposure Position	1	2	3	4	5	Reported SAR/1.6 + PD/10 Summation Total Exposure ratio		
			2.4GHz WLAN Ant 4 1g SAR (W/kg)	2.4GHz WLAN Ant 3 1g SAR (W/kg)	2.4GHz WLAN Ant 4+3 1g SAR (W/kg)	5GHz WLAN Ant 4+8 1g SAR (W/kg)	PD 4cm ² (W/m ²)	1+4+5 Summed Ratio	2+4+5 Summed Ratio	3+4+5 Summed Ratio
n258	Plane A sub-module	Front	0.073	0.048	0.088	0.100	4.690	0.545	0.570	0.577
		Back	0.096	0.123	0.157	0.309	4.690	0.606	0.627	0.722
		Left side	0.001	0.158	0.173	0.121	4.690	0.568	0.578	0.545
		Right side	0.143	0.151	0.123	0.431	4.690	0.653	0.635	0.828
		Top side	0.117	0.001	0.124	0.207	4.690	0.543	0.620	0.672
		Bottom side					4.690	0.469	0.469	0.469
n258	Plane B sub-module	Front	0.073	0.048	0.088	0.100	4.310	0.507	0.532	0.539
		Back	0.096	0.123	0.157	0.309	4.310	0.568	0.589	0.684
		Left side	0.001	0.158	0.173	0.121	4.310	0.530	0.540	0.507
		Right side	0.143	0.151	0.123	0.431	4.310	0.615	0.597	0.790
		Top side	0.117	0.001	0.124	0.207	4.310	0.505	0.582	0.634
		Bottom side					4.310	0.431	0.431	0.431
n260	Plane A sub-module	Front	0.073	0.048	0.088	0.100	5.070	0.583	0.608	0.615
		Back	0.096	0.123	0.157	0.309	5.070	0.644	0.665	0.760
		Left side	0.001	0.158	0.173	0.121	5.070	0.606	0.616	0.583
		Right side	0.143	0.151	0.123	0.431	5.070	0.691	0.673	0.866
		Top side	0.117	0.001	0.124	0.207	5.070	0.581	0.658	0.710
		Bottom side					5.070	0.507	0.507	0.507
n260	Plane B sub-module	Front	0.073	0.048	0.088	0.100	3.570	0.433	0.458	0.465
		Back	0.096	0.123	0.157	0.309	3.570	0.494	0.515	0.610
		Left side	0.001	0.158	0.173	0.121	3.570	0.456	0.466	0.433
		Right side	0.143	0.151	0.123	0.431	3.570	0.541	0.523	0.716
		Top side	0.117	0.001	0.124	0.207	3.570	0.431	0.508	0.560
		Bottom side					3.570	0.357	0.357	0.357
n261	Plane A sub-module	Front	0.073	0.048	0.088	0.100	4.870	0.563	0.588	0.595
		Back	0.096	0.123	0.157	0.309	4.870	0.624	0.645	0.740
		Left side	0.001	0.158	0.173	0.121	4.870	0.586	0.596	0.563
		Right side	0.143	0.151	0.123	0.431	4.870	0.671	0.653	0.846
		Top side	0.117	0.001	0.124	0.207	4.870	0.561	0.638	0.690
		Bottom side					4.870	0.487	0.487	0.487
n261	Plane B sub-module	Front	0.073	0.048	0.088	0.100	4.050	0.481	0.506	0.513
		Back	0.096	0.123	0.157	0.309	4.050	0.542	0.563	0.658
		Left side	0.001	0.158	0.173	0.121	4.050	0.504	0.514	0.481
		Right side	0.143	0.151	0.123	0.431	4.050	0.589	0.571	0.764
		Top side	0.117	0.001	0.124	0.207	4.050	0.479	0.556	0.608
		Bottom side					4.050	0.405	0.405	0.405

<Body-Worn Exposure Condition>

<5GNR FR2, BT Index 3>

WWAN Band		Exposure Position	2	3	4	5	Reported SAR/1.6 + PD/10 Summation Total Exposure ratio		
			Bluetooth Ant 4	Bluetooth Ant 3	Bluetooth Ant 4+3	PD	2+5 Summed Ratio	3+5 Summed Ratio	4+5 Summed Ratio
			1g SAR (W/kg)	1g SAR (W/kg)	1g SAR (W/kg)	4cm ² (W/m ²)			
n258	Plane A sub-module	Front	0.165	0.231	0.128	4.690	0.572	0.613	0.549
		Back	0.293	0.292	0.191	4.690	0.652	0.652	0.588
n258	Plane B sub-module	Front	0.165	0.231	0.128	4.310	0.534	0.575	0.511
		Back	0.293	0.292	0.191	4.310	0.614	0.614	0.550
n260	Plane A sub-module	Front	0.165	0.231	0.128	5.070	0.610	0.651	0.587
		Back	0.293	0.292	0.191	5.070	0.690	0.690	0.626
n260	Plane B sub-module	Front	0.165	0.231	0.128	3.570	0.460	0.501	0.437
		Back	0.293	0.292	0.191	3.570	0.540	0.540	0.476
n261	Plane A sub-module	Front	0.165	0.231	0.128	4.870	0.590	0.631	0.567
		Back	0.293	0.292	0.191	4.870	0.670	0.670	0.606
n261	Plane B sub-module	Front	0.165	0.231	0.128	4.050	0.508	0.549	0.485
		Back	0.293	0.292	0.191	4.050	0.588	0.588	0.524

<5GNR FR2, WLAN Index 7>

WWAN Band		Exposure Position	1	2	3	4	5	Reported SAR/1.6 + PD/10 Summation Total Exposure ratio			
			2.4GHz WLAN Ant 4	2.4GHz WLAN Ant 3	2.4GHz WLAN Ant 4+3	5/6GHz WLAN Ant 4+8	PD	1+5 Summed Ratio	2+5 Summed Ratio	3+5 Summed Ratio	4+5 Summed Ratio
			1g SAR (W/kg)	1g SAR (W/kg)	1g SAR (W/kg)	1g SAR (W/kg)	4cm ² (W/m ²)				
n258	Plane A sub-module	Front	0.307	0.369	0.319	0.202	4.690	0.661	0.700	0.668	0.595
		Back	0.530	0.493	0.596	0.550	4.690	0.800	0.777	0.842	0.813
n258	Plane B sub-module	Front	0.307	0.369	0.319	0.202	4.310	0.623	0.662	0.630	0.557
		Back	0.530	0.493	0.596	0.550	4.310	0.762	0.739	0.804	0.775
n260	Plane A sub-module	Front	0.307	0.369	0.319	0.202	5.070	0.699	0.738	0.706	0.633
		Back	0.530	0.493	0.596	0.550	5.070	0.838	0.815	0.880	0.851
n260	Plane B sub-module	Front	0.307	0.369	0.319	0.202	3.570	0.549	0.588	0.556	0.483
		Back	0.530	0.493	0.596	0.550	3.570	0.688	0.665	0.730	0.701
n261	Plane A sub-module	Front	0.307	0.369	0.319	0.202	4.870	0.679	0.718	0.686	0.613
		Back	0.530	0.493	0.596	0.550	4.870	0.818	0.795	0.860	0.831
n261	Plane B sub-module	Front	0.307	0.369	0.319	0.202	4.050	0.597	0.636	0.604	0.531
		Back	0.530	0.493	0.596	0.550	4.050	0.736	0.713	0.778	0.749



<5G NR FR2, WLAN Index 9, BT Index 4>

WWAN Band		Exposure Position	1	2	3	4	5	Reported SAR/1.6 + PD/10 Summation Total Exposure ratio		
			5G/6EHz WLAN Ant 4+8 1g SAR (W/kg)	Bluetooth Ant 4 1g SAR (W/kg)	Bluetooth Ant 3 1g SAR (W/kg)	Bluetooth Ant 4+3 1g SAR (W/kg)	PD 4cm ² (W/m ²)	1+2+5 Summed Ratio	1+2+5 Summed Ratio	1+4+5 Summed Ratio
n258	Plane A sub-module	Front	0.175	0.003	0.140	0.136	4.690	0.580	0.666	0.663
		Back	0.391	0.136	0.160	0.185	4.690	0.798	0.813	0.829
n258	Plane B sub-module	Front	0.175	0.003	0.140	0.136	4.310	0.542	0.628	0.625
		Back	0.391	0.136	0.160	0.185	4.310	0.760	0.775	0.791
n260	Plane A sub-module	Front	0.175	0.003	0.140	0.136	5.070	0.618	0.704	0.701
		Back	0.391	0.136	0.160	0.185	5.070	0.836	0.851	0.867
n260	Plane B sub-module	Front	0.175	0.003	0.140	0.136	3.570	0.468	0.554	0.551
		Back	0.391	0.136	0.160	0.185	3.570	0.686	0.701	0.717
n261	Plane A sub-module	Front	0.175	0.003	0.140	0.136	4.870	0.598	0.684	0.681
		Back	0.391	0.136	0.160	0.185	4.870	0.816	0.831	0.847
n261	Plane B sub-module	Front	0.175	0.003	0.140	0.136	4.050	0.516	0.602	0.599
		Back	0.391	0.136	0.160	0.185	4.050	0.734	0.749	0.765

<5G NR FR2, WLAN Index 8>

WWAN Band		Exposure Position	1	2	3	4	5	Reported SAR/1.6 + PD/10 Sum Total Exposure ratio		
			2.4GHz WLAN Ant 4 1g SAR (W/kg)	2.4GHz WLAN Ant 3 1g SAR (W/kg)	2.4GHz WLAN Ant 4+3 1g SAR (W/kg)	5GHz WLAN Ant 4+8 1g SAR (W/kg)	PD 4cm ² (W/m ²)	1+4+5 Summed Ratio	2+4+5 Summed Ratio	3+4+5 Summed Ratio
n258	Plane A sub-module	Front	0.073	0.048	0.088	0.175	4.690	0.545	0.570	0.624
		Back	0.096	0.123	0.157	0.391	4.690	0.606	0.627	0.773
n258	Plane B sub-module	Front	0.073	0.048	0.088	0.175	4.310	0.507	0.532	0.586
		Back	0.096	0.123	0.157	0.391	4.310	0.568	0.589	0.735
n260	Plane A sub-module	Front	0.073	0.048	0.088	0.175	5.070	0.583	0.608	0.662
		Back	0.096	0.123	0.157	0.391	5.070	0.644	0.665	0.811
n260	Plane B sub-module	Front	0.073	0.048	0.088	0.175	3.570	0.433	0.458	0.512
		Back	0.096	0.123	0.157	0.391	3.570	0.494	0.515	0.661
n261	Plane A sub-module	Front	0.073	0.048	0.088	0.175	4.870	0.563	0.588	0.642
		Back	0.096	0.123	0.157	0.391	4.870	0.624	0.645	0.791
n261	Plane B sub-module	Front	0.073	0.048	0.088	0.175	4.050	0.481	0.506	0.560
		Back	0.096	0.123	0.157	0.391	4.050	0.542	0.563	0.709



<Product Specific Exposure Condition>

<5G NR FR2 with WLAN Index 7>

WWAN Band		Exposure Position	4	5	Reported SAR/1.6 + PD/10 Sum Total Exposure ratio
			5/6GHz WLAN Ant 4+8 10g SAR (W/kg)	PD 4cm ² (W/m ²)	4+5 Summed Ratio
n258	Plane A sub-module	Front	0.622	6.140	0.770
		Back	0.710	7.410	0.919
		Left side	1.067		0.267
		Right side	1.196	2.920	0.591
		Top side	0.769	7.500	0.942
		Bottom side			0.000
n258	Plane B sub-module	Front	0.622	0.890	0.245
		Back	0.710	7.500	0.928
		Left side	1.067		0.267
		Right side	1.196	2.230	0.522
		Top side	0.769	3.370	0.529
		Bottom side			0.000
n260	Plane A sub-module	Front	0.622	5.270	0.683
		Back	0.710	3.460	0.524
		Left side	1.067		0.267
		Right side	1.196	2.410	0.540
		Top side	0.769	7.500	0.942
		Bottom side			0.000
n260	Plane B sub-module	Front	0.622	0.440	0.200
		Back	0.710	7.500	0.928
		Left side	1.067		0.267
		Right side	1.196	1.790	0.478
		Top side	0.769	2.510	0.443
		Bottom side			0.000
n261	Plane A sub-module	Front	0.622	5.270	0.683
		Back	0.710	6.020	0.780
		Left side	1.067		0.267
		Right side	1.196	2.050	0.504
		Top side	0.769	7.500	0.942
		Bottom side			0.000
n261	Plane B sub-module	Front	0.622	0.840	0.240
		Back	0.710	7.500	0.928
		Left side	1.067		0.267
		Right side	1.196	2.570	0.556
		Top side	0.769	2.990	0.491
		Bottom side			0.000



<5G NR FR2 with WLAN Index 8>

WWAN Band		Exposure Position	4	5	Reported SAR/1.6 + PD/10 Sum Total Exposure ratio
			5GHz WLAN Ant 4+8 1g SAR (W/kg)	PD 4cm ² (W/m ²)	4+5 Summed Ratio
n258	Plane A sub-module	Front	0.390	6.140	0.712
		Back	0.765	7.410	0.932
		Left side	0.404		0.101
		Right side	0.898	2.920	0.517
		Top side	0.511	7.500	0.878
		Bottom side			0.000
n258	Plane B sub-module	Front	0.390	0.890	0.187
		Back	0.765	7.500	0.941
		Left side	0.404		0.101
		Right side	0.898	2.230	0.448
		Top side	0.511	3.370	0.465
		Bottom side			0.000
n260	Plane A sub-module	Front	0.390	5.270	0.625
		Back	0.765	3.460	0.537
		Left side	0.404		0.101
		Right side	0.898	2.410	0.466
		Top side	0.511	7.500	0.878
		Bottom side			0.000
n260	Plane B sub-module	Front	0.390	0.440	0.142
		Back	0.765	7.500	0.941
		Left side	0.404		0.101
		Right side	0.898	1.790	0.404
		Top side	0.511	2.510	0.379
		Bottom side			0.000
n261	Plane A sub-module	Front	0.390	5.270	0.625
		Back	0.765	6.020	0.793
		Left side	0.404		0.101
		Right side	0.898	2.050	0.430
		Top side	0.511	7.500	0.878
		Bottom side			0.000
n261	Plane B sub-module	Front	0.390	0.840	0.182
		Back	0.765	7.500	0.941
		Left side	0.404		0.101
		Right side	0.898	2.570	0.482
		Top side	0.511	2.990	0.427
		Bottom side			0.000



<5GNR FR2 with WLAN Index 9>

WWAN Band		Exposure Position	1	5	Reported SAR/1.6 + PD/10 Sum Total Exposure ratio
			5G/6EHz WLAN Ant 4+8 10g SAR (W/kg)	PD 4cm ² (W/m ²)	1+5 Summed Ratio
n258	Plane A sub-module	Front	0.390	6.140	0.712
		Back	0.765	7.410	0.932
		Left side	0.404		0.101
		Right side	0.898	2.920	0.517
		Top side	0.511	7.500	0.878
		Bottom side			0.000
n258	Plane B sub-module	Front	0.390	0.890	0.187
		Back	0.765	7.500	0.941
		Left side	0.404		0.101
		Right side	0.898	2.230	0.448
		Top side	0.511	3.370	0.465
		Bottom side			0.000
n260	Plane A sub-module	Front	0.390	5.270	0.625
		Back	0.765	3.460	0.537
		Left side	0.404		0.101
		Right side	0.709	2.410	0.418
		Top side	0.511	7.500	0.878
		Bottom side			0.000
n260	Plane B sub-module	Front	0.390	0.440	0.142
		Back	0.765	7.500	0.941
		Left side	0.404		0.101
		Right side	0.898	1.790	0.404
		Top side	0.511	2.510	0.379
		Bottom side			0.000
n261	Plane A sub-module	Front	0.390	5.270	0.625
		Back	0.765	6.020	0.793
		Left side	0.404		0.101
		Right side	0.898	2.050	0.430
		Top side	0.511	7.500	0.878
		Bottom side			0.000
n261	Plane B sub-module	Front	0.390	0.840	0.182
		Back	0.765	7.500	0.941
		Left side	0.404		0.101
		Right side	0.898	2.570	0.482
		Top side	0.511	2.990	0.427
		Bottom side			0.000

Test Engineer : Mood Huang and Carter Jhuang



13. Uncertainty Assessment

The budget is valid for evaluation distances $> \lambda/2\pi$. For specific tests and configurations, the Uncertainty could be considerably smaller.

cDASY6 Module mmWave Uncertainty Budget Evaluation Distances to the Antennas $> \lambda/2\pi$					
Error Description	Uncertainty Value (\pm dB)	Probability	Divisor	(Ci)	Standard Uncertainty (\pm dB)
Uncertainty terms dependent on the measurement system					
Probe Calibration	0.49	N	1	1	0.49
Probe correction	0.00	R	1.732	1	0.00
Frequency response (BW \leq 1 GHz)	0.20	R	1.732	1	0.12
Sensor cross coupling	0.00	R	1.732	1	0.00
Isotropy	0.50	R	1.732	1	0.29
Linearity	0.20	R	1.732	1	0.12
Probe scattering	0.00	R	1.732	1	0.00
Probe positioning offset	0.30	R	1.732	1	0.17
Probe positioning repeatability	0.04	R	1.732	1	0.02
Sensor mechanical offset	0.00	R	1.732	1	0.00
Probe spatial resolution	0.00	R	1.732	1	0.00
Field impedance dependence	0.00	R	1.732	1	0.00
Amplitude and phase drift	0.00	R	1.732	1	0.00
Amplitude and phase noise	0.04	R	1.732	1	0.02
Measurement area truncation	0.00	R	1.732	1	0.00
Data acquisition	0.03	N	1	1	0.03
Sampling	0.00	R	1.732	1	0.00
Field reconstruction	0.60	R	1.732	1	0.35
Forward transformation	0.00	R	1.732	1	0.00
Power density scaling	0.00	R	1.732	1	0.00
Spatial averaging	0.10	R	1.732	1	0.06
System detection limit	0.04	R	1.732	1	0.02
Uncertainty terms dependent on the DUT and environmental factors					
Probe coupling with DUT	0.00	R	1.732	1	0.0
Modulation response	0.40	R	1.732	1	0.2
Integration time	0.00	R	1.732	1	0.0
Response time	0.00	R	1.732	1	0.0
Device holder influence	0.10	R	1.732	1	0.1
DUT alignment	0.00	R	1.732	1	0.0
RF ambient conditions	0.04	R	1.732	1	0.0
Ambient reflections	0.04	R	1.732	1	0.0
Immunity / secondary reception	0.00	R	1.732	1	0.0
Drift of the DUT		R	1.732	1	
Combined Std. Uncertainty					0.76 dB
Expanded STD Uncertainty (95%)					1.52 dB
Declaration of Conformity: The test results with all measurement uncertainty excluded is presented in accordance with the regulation limits or requirements declared by manufacturers.					
Comments and Explanations: The declared of product specification for EUT presented in the report are provided by the manufacturer, and the manufacturer takes all the responsibilities for the accuracy of product specification.					



14. References

- [1] FCC 47 CFR Part 2 “Frequency Allocations and Radio Treaty Matters; General Rules and Regulations”
- [2] FCC KDB 447498 D01 v06, “Mobile and Portable Device RF Exposure Procedures and Equipment Authorization Policies”, Oct 2015
- [3] FCC KDB 865664 D02 v01r02, “RF Exposure Compliance Reporting and Documentation Considerations” Oct 2015.
- [4] FCC KDB 648474 D04 v01r03, “SAR Evaluation Considerations for Wireless Handsets”, Oct 2015.