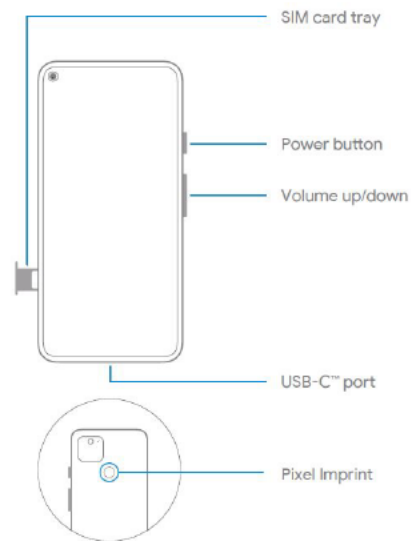


Meet your new Pixel



Tips, new features, and help

On your phone, tap
Settings > Tips & support

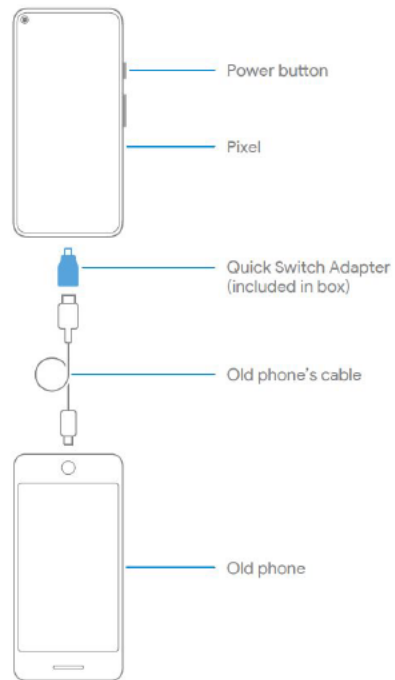
For help transferring data, visit
g.co/datatransferhelp

For help with accessibility, visit
g.co/disabilitysupport

Pixel, Google, and related marks and logos are trademarks of Google LLC.
USB-C™ is a trademark of USB Implementers Forum.

Set up your new Pixel

1. Press and hold the power button for 5 seconds to turn on your phone
2. Follow the on-screen steps to set up your phone



Regulatory Information

Regulatory information, certification, and compliance marks specific to Pixel 5 can be found on your Pixel 5 under **Settings > About Phone> Regulatory labels**.

EMC Compliance Statement

Important: This device and its power adapter have demonstrated Electromagnetic Compatibility (EMC) compliance under conditions that included the use of compliant peripheral devices and shielded cables between system components. It is important that you use compliant peripheral devices and shielded cables between system components to reduce the possibility of causing interference to radios, televisions, and other electronic devices.

Wireless Charging

When using Battery Share, this equipment should be operated with a minimum distance of 20cm between the device and your body.

Regulatory Information: United States

FCC Regulatory Compliance

Note: This equipment has been tested and found to comply with the limits for a Class B digital device, pursuant to part 15 of the FCC Rules. These limits are designed to provide reasonable protection against harmful interference in a residential installation. This equipment generates, uses, and can radiate radio frequency energy and, if not installed and used in accordance with the instructions, may cause harmful interference to radio communications. However, there is no guarantee that interference will not occur in a particular installation. If this equipment does cause harmful interference to radio or television reception, which can be determined by turning the equipment off and on, the user is encouraged to try to correct the interference by one or more of the following measures:

- Reorient or relocate the receiving antenna.
- Increase the separation between the equipment and receiver.
- Connect the equipment into an outlet on a circuit different from that to which the receiver is connected.
- Consult the dealer or an experienced radio/TV technician for help.

Changes or modifications not expressly approved by Google could void your authority to operate the equipment.

This device complies with Part 15 of the FCC Rules. Operation is subject to the following 2 conditions:

1. These devices may not cause harmful interference.
2. These devices must accept any interference received, including interference that may cause undesired operation.

Model: GD1YQ

Responsible Party:

Google LLC
1600 Amphitheatre Parkway
Mountain View, CA 94043
g.co/pixel/support

Hearing Aid Compatibility (HAC)

Pixel 5 has been evaluated and certified to be compatible with hearing aids per technical specification ANSI C63.19. There are two measures of HAC:

M rating, which is a measure of immunity to radio frequency interference for acoustic coupling hearing aids; and

T rating, which is a measure of performance when used with an inductive coupling (telecoil) hearing aid.

Pixel 5 is rated M4/T3, according to the FCC's HAC regulations for wireless devices.

Per FCC rules, a mobile phone is considered hearing aid compatible if rated M3 or M4 for acoustic coupling or T3 or T4 for inductive coupling.

Your phone has been tested and rated for use with hearing aids for some of the wireless technologies that they use. However, there may be some newer wireless technologies used in these phones that have not yet been tested for use with hearing aids. It is important to try the different features of your phone thoroughly and in different locations, using your hearing aid or cochlear implant, to determine if you hear any interfering noise. Consult your service provider or Google for information on HAC. If you have questions about return or exchange policies, consult your service provider or phone retailer.

Radio Frequency Exposure

This device has been evaluated and meets the applicable regulatory requirements for exposure to radio waves and is designed and manufactured not to exceed the applicable emission limits for exposure to radio frequency (RF) energy.

In the countries where the Specific Absorption Rate (SAR) limit is 1.6 W/kg averaged over one gram of tissue, the highest SAR values are 1.16 W/kg when used against head with no separation and 1.18 W/kg against body with 1.0 cm (0.4 in) separation.

You can find the SAR values applicable to each of those jurisdictions on your device: **Settings > About phone > Regulatory labels.**

To reduce exposure to RF energy, use a hands-free option, such as the built-in speakerphone, the supplied headphones, or other similar accessories. Ensure that the device accessories, such as a device case and device holster, are not composed of metal components. Keep the device away from your body to meet the distance requirement.

You can find additional information about SAR at the following pages:

fcc.gov

icnirp.org

ec.europa.eu

dot.gov.in