

Test Laboratory: Sporton International Inc.

Device Under Test Properties

Manufacturer	Dimensions [mm]	IMEI	DUT Type
	144.0 x 70.0 x 8.0		Phone

Exposure Conditions

Phantom Section	Position, Test Distance [mm]	Frequency [MHz]	Conversion Factor
5G	EDGE RIGHT, 10.00	38500.0	1.0

Hardware Setup

Phantom	Medium	Probe, Calibration Date	DAE, Calibration Date
mmWave - xxxx	Air -	EUmmWV4 - SN9461_F1-78GHz, 2019-11-05	DAE4 Sn1424, 2020-01-24

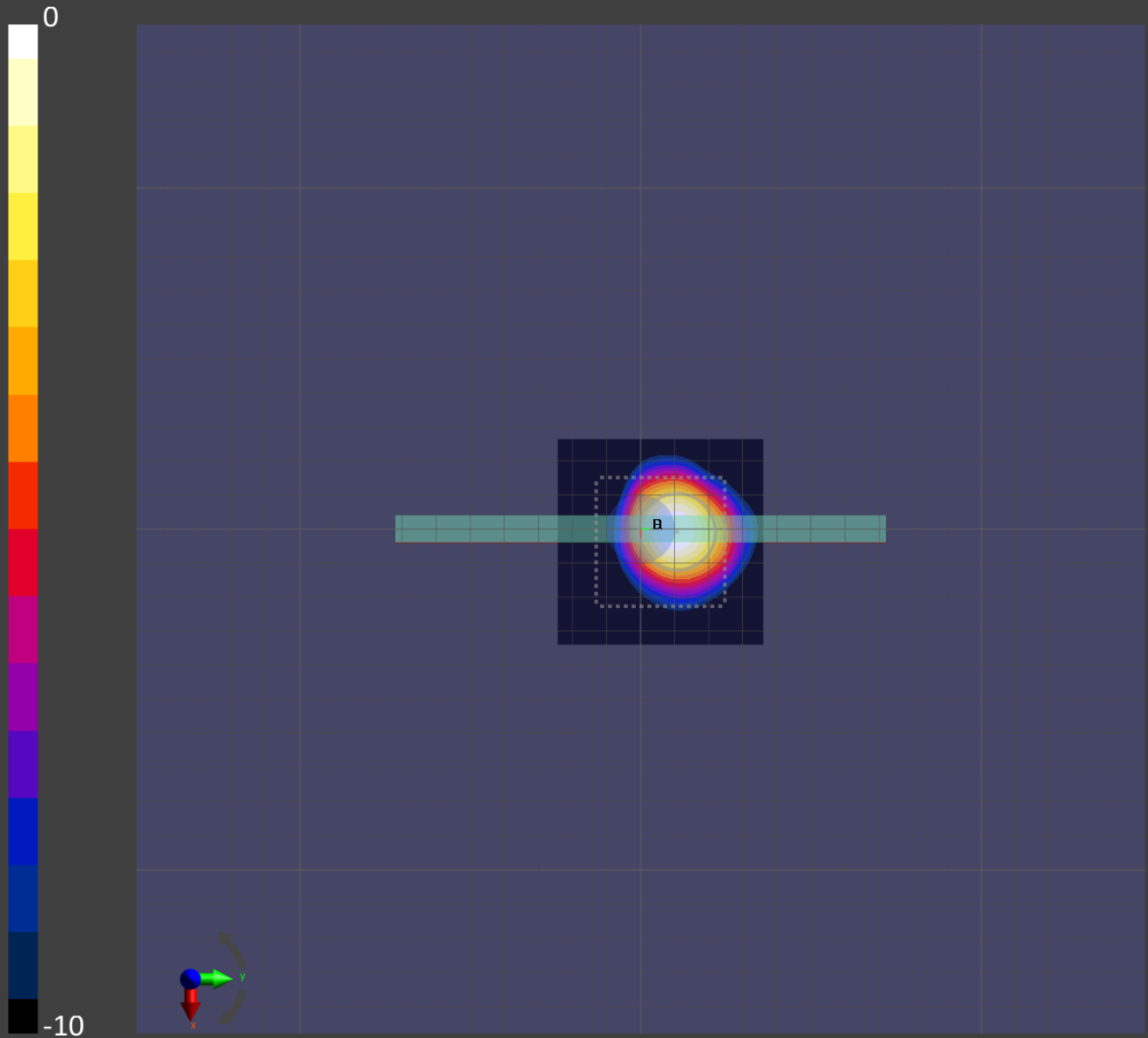
Scans Setup

Grid Extents [mm]	60.0 x 60.0
Grid Steps [λ]	0.25 x 0.25
Sensor Surface [mm]	10.0

Measurement Results

Date	2020-06-04, 13:49
Avg. Area [cm^2]	4.00
$S_{\text{avg inc}}$ [W/m^2]	5.24
$S_{\text{avg tot}}$ [W/m^2]	5.74
S_{peak} [W/m^2]	12.8
E_{peak} [V/m]	72.0
H_{peak} [A/m]	0.179
Power Drift [dB]	-0.10

Averaged [4.0 cm²] |Re{S}|(x,y,z,f0) [dB(5.74W/m²)]



Test Laboratory: Sporton International Inc.

Device Under Test Properties

Manufacturer	Dimensions [mm]	IMEI	DUT Type
	144.0 x 70.0 x 8.0		Phone

Exposure Conditions

Phantom Section	Position, Test Distance [mm]	Frequency [MHz]	Conversion Factor
5G	EDGE RIGHT, 10.00	27550.0	1.0

Hardware Setup

Phantom	Medium	Probe, Calibration Date	DAE, Calibration Date
mmWave - xxxx	Air -	EUmmWV4 - SN9461_F1-78GHz, 2019-11-05	DAE4 Sn1424, 2020-01-24

Scans Setup

Grid Extents [mm]	60.0 x 60.0
Grid Steps [lambda]	0.25 x 0.25
Sensor Surface [mm]	10.0

Measurement Results

Date	2020-06-04, 04:41
Avg. Area [cm ²]	4.00
S _{avg inc} [W/m ²]	5.14
S _{avg tot} [W/m ²]	5.48
S _{peak} [W/m ²]	12.9
E _{peak} [V/m]	71.2
H _{peak} [A/m]	0.182
Power Drift [dB]	-0.08

Averaged [4.0 cm²] |Re{S}|(x,y,z,f0) [dB(5.48W/m²)]

