

Measurement Report for Device

Device Under Test Properties

Model, Manufacturer	Dimensions [mm]	IMEI	DUT Type
Device,	153.0 x 71.0 x 7.5		Phone

Exposure Conditions

Phantom Section	Position, Test Distance [mm]	Frequency [MHz]	Conversion Factor
5G	BACK, 2.00	38500.0	1.0

Hardware Setup

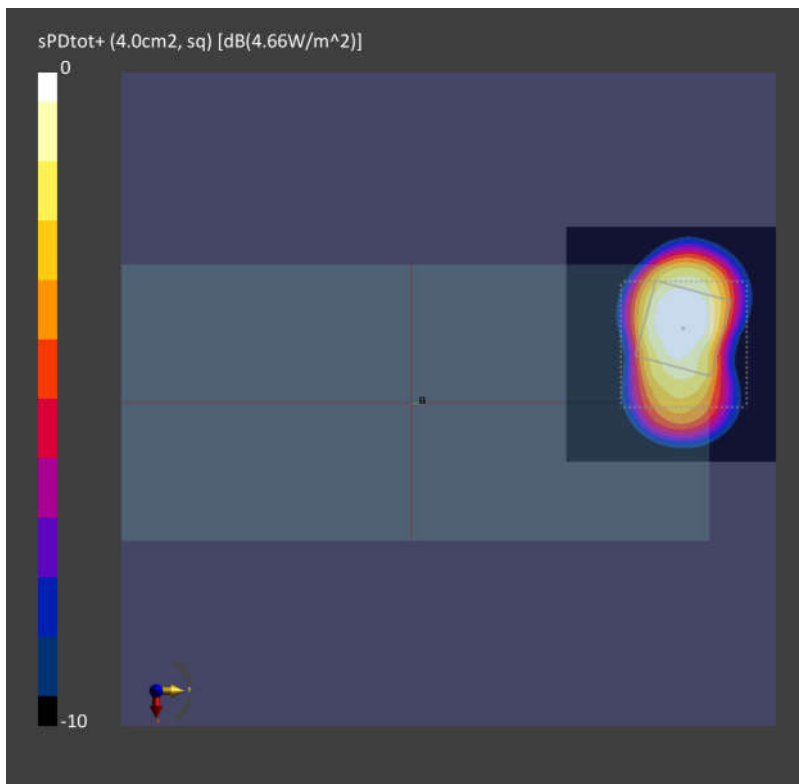
Phantom	Medium	Probe, Calibration Date	DAE, Calibration Date
mmWave - 1044	Air -	EUmmWV3 - SN9424_F1-55GHz, 2021-03-23	DAE4 Sn656, 2021-01-22

Scans Setup

Scan Type	5G Scan
Grid Extents [mm]	60.0 x 60.0
Grid Steps [lambda]	0.25 x 0.25
Sensor Surface [mm]	2.0

Measurement Results

Date	2021-11-18, 04:18
Avg. Area [cm ²]	4.00
psPDn+ [W/m ²]	4.00
psPDtot+ [W/m ²]	4.66
H _{max} [A/m]	0.270
E _{max} [V/m]	101
max _(Sto) [W/m ²]	20.7
Power Drift [dB]	0.11



Measurement Report for Device

Device Under Test Properties

Model, Manufacturer	Dimensions [mm]	IMEI	DUT Type
Device,	153.0 x 71.0 x 7.5		Phone

Exposure Conditions

Phantom Section	Position, Test Distance [mm]	Frequency [MHz]	Conversion Factor
5G	BACK, 2.00	27925.0	1.0

Hardware Setup

Phantom	Medium	Probe, Calibration Date	DAE, Calibration Date
mmWave - 1044	Air -	EUmmWV3 - SN9424_F1-55GHz, 2021-03-23	DAE4 Sn656, 2021-01-22

Scans Setup

Scan Type	5G Scan
Grid Extents [mm]	60.0 x 60.0
Grid Steps [lambda]	0.25 x 0.25
Sensor Surface [mm]	2.0

Measurement Results

Date	2021-11-17, 06:59
Avg. Area [cm ²]	4.00
psPDn+ [W/m ²]	3.50
psPDtot+ [W/m ²]	4.02
H _{max} [A/m]	0.228
E _{max} [V/m]	80.8
max _(Sto) [W/m ²]	14.8
Power Drift [dB]	0.04

