

## Measurement Report for Device

### Device Under Test Properties

Model, Manufacturer	Dimensions [mm]	Software Version	DUT Type
Device,	152.0 x 72.0 x 10.0	3.0.0.841	Phone

### Exposure Conditions

Phantom Section	Position, Test Distance [mm]	Frequency [MHz]	Conversion Factor
5G	EDGE TOP, 10.00	37000.0	1.0

### Hardware Setup

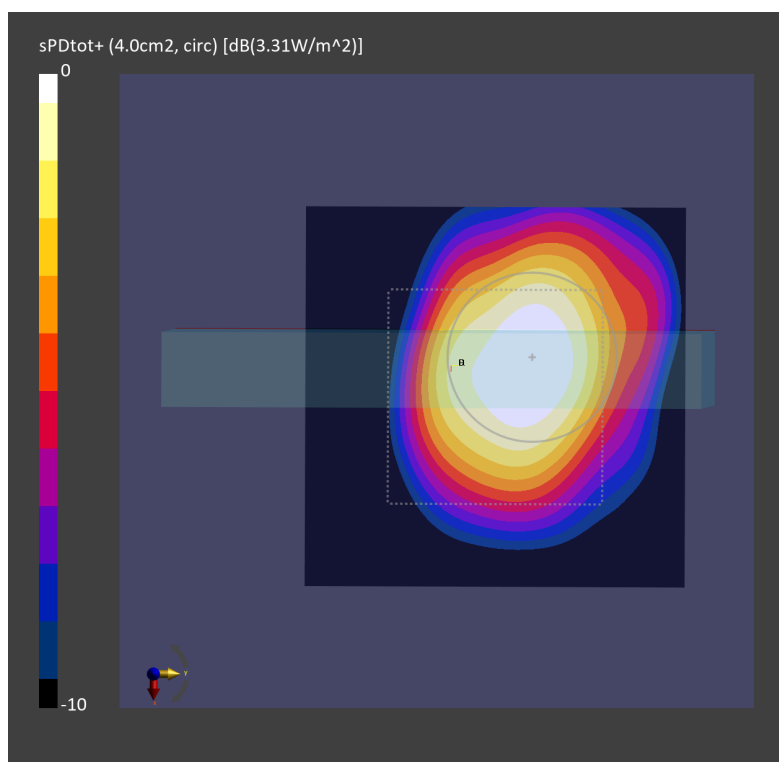
Phantom	Medium	Probe, Calibration Date	DAE, Calibration Date
mmWave - xxxx	Air -	EUmmWV4 - SN9441_F1-55GHz, 2022-11-18	DAE4 Sn376, 2022-10-19

### Scans Setup

Scan Type	5G Scan
Grid Extents [mm]	50.0 x 50.0
Grid Steps [lambda]	0.25 x 0.25
Sensor Surface [mm]	10.0

### Measurement Results

Date	2023-08-31
Avg. Area [cm <sup>2</sup> ]	4.00
psPDn+ [W/m <sup>2</sup> ]	3.03
psPDtot+ [W/m <sup>2</sup> ]	3.31
H <sub>max</sub> [A/m]	0.164
E <sub>max</sub> [V/m]	64.9
max(S <sub>tot</sub> ) [W/m <sup>2</sup> ]	9.95
Power Drift [dB]	-0.10



## Measurement Report for Device

### Device Under Test Properties

Model, Manufacturer	Dimensions [mm]	Software Version	DUT Type
Device,	152.0 x 72.0 x 10.0	3.0.0.841	Phone

### Exposure Conditions

Phantom Section	Position, Test Distance [mm]	Frequency [MHz]	Conversion Factor
5G	EDGE TOP, 10.00	27500.0	1.0

### Hardware Setup

Phantom	Medium	Probe, Calibration Date	DAE, Calibration Date
mmWave - xxxx	Air -	EUmmWV4 - SN9441_F1-55GHz, 2022-11-18	DAE4 Sn376, 2022-10-19

### Scans Setup

Scan Type	5G Scan
Grid Extents [mm]	50.0 x 50.0
Grid Steps [lambda]	0.25 x 0.25
Sensor Surface [mm]	10.0

### Measurement Results

Date	2023-08-29
Avg. Area [cm <sup>2</sup> ]	4.00
psPDn+ [W/m <sup>2</sup> ]	2.92
psPDtot+ [W/m <sup>2</sup> ]	3.25
H <sub>max</sub> [A/m]	0.158
E <sub>max</sub> [V/m]	66.3
max(Stot) [W/m <sup>2</sup> ]	10.2
Power Drift [dB]	0.15

