

Test Laboratory: Sporton International Inc.

Device Under Test Properties

Manufacturer	Dimensions [mm]	IMEI	DUT Type
	154.0 x 74.0 x 8.0		Phone

Exposure Conditions

Phantom Section	Position, Test Distance [mm]	Frequency [MHz]	Conversion Factor
5G	EDGE RIGHT, 2.00	27500.0	1.0

Hardware Setup

Phantom	Medium	Probe, Calibration Date	DAE, Calibration Date
mmWave - xxxx	Air -	EUmmWV4 - SN9461_F1-78GHz, 2019-11-05	DAE4 Sn1424, 2020-01-24

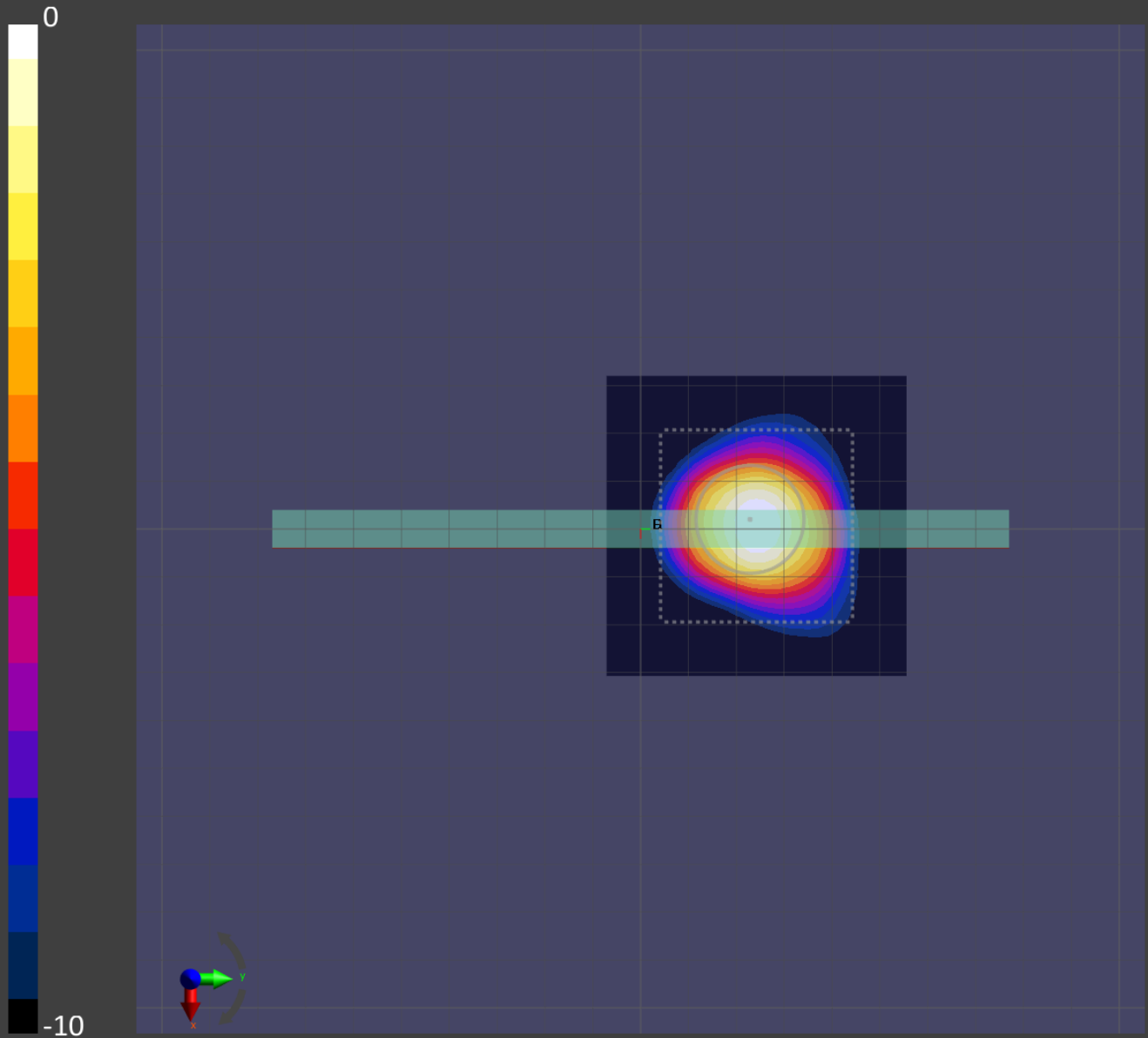
Scans Setup

Grid Extents [mm]	60.0 x 60.0
Grid Steps [lambda]	0.25 x 0.25
Sensor Surface [mm]	2.0

Measurement Results

Date	2020-06-02, 06:13
Avg. Area [cm ²]	4.00
S _{avg inc} [W/m ²]	4.33
S _{avg tot} [W/m ²]	5.63
S _{peak} [W/m ²]	13.2
E _{peak} [V/m]	72.2
H _{peak} [A/m]	0.195
Power Drift [dB]	-0.06

Averaged [4.0 cm²] |Re{S}|(x,y,z,f0) [dB(5.63W/m²)]



Test Laboratory: Sporton International Inc.

Device Under Test Properties

Manufacturer	Dimensions [mm]	IMEI	DUT Type
	154.0 x 74.0 x 8.0		Phone

Exposure Conditions

Phantom Section	Position, Test Distance [mm]	Frequency [MHz]	Conversion Factor
5G	EDGE RIGHT, 2.00	27500.0	1.0

Hardware Setup

Phantom	Medium	Probe, Calibration Date	DAE, Calibration Date
mmWave - xxxx	Air -	EUmmWV4 - SN9461_F1-78GHz, 2019-11-05	DAE4 Sn1424, 2020-01-24

Scans Setup

Grid Extents [mm]	60.0 x 60.0
Grid Steps [lambda]	0.25 x 0.25
Sensor Surface [mm]	2.0

Measurement Results

Date	2020-06-02, 16:20
Avg. Area [cm ²]	4.00
S _{avg inc} [W/m ²]	4.89
S _{avg tot} [W/m ²]	6.12
S _{peak} [W/m ²]	15.1
E _{peak} [V/m]	81.2
H _{peak} [A/m]	0.212
Power Drift [dB]	0.06

Averaged [4.0 cm²] |Re{S}|(x,y,z,f0) [dB(6.12W/m²)]

