

Test Laboratory: Sporton International Inc.

**Device Under Test Properties**

Manufacturer	Dimensions [mm]	IMEI	DUT Type
	100.0 x 100.0 x 100.0		System Source

**Exposure Conditions**

Phantom Section	Position, Test Distance [mm]	Frequency [MHz]	Conversion Factor
5G	FRONT, 5.55	30000.0	1.0

**Hardware Setup**

Phantom	Medium	Probe, Calibration Date	DAE, Calibration Date
mmWave - xxxx	Air -	EUmmWV4 - SN9461_F1-78GHz, 2019-11-05	DAE4 Sn854, 2019-05-21

**Scans Setup**

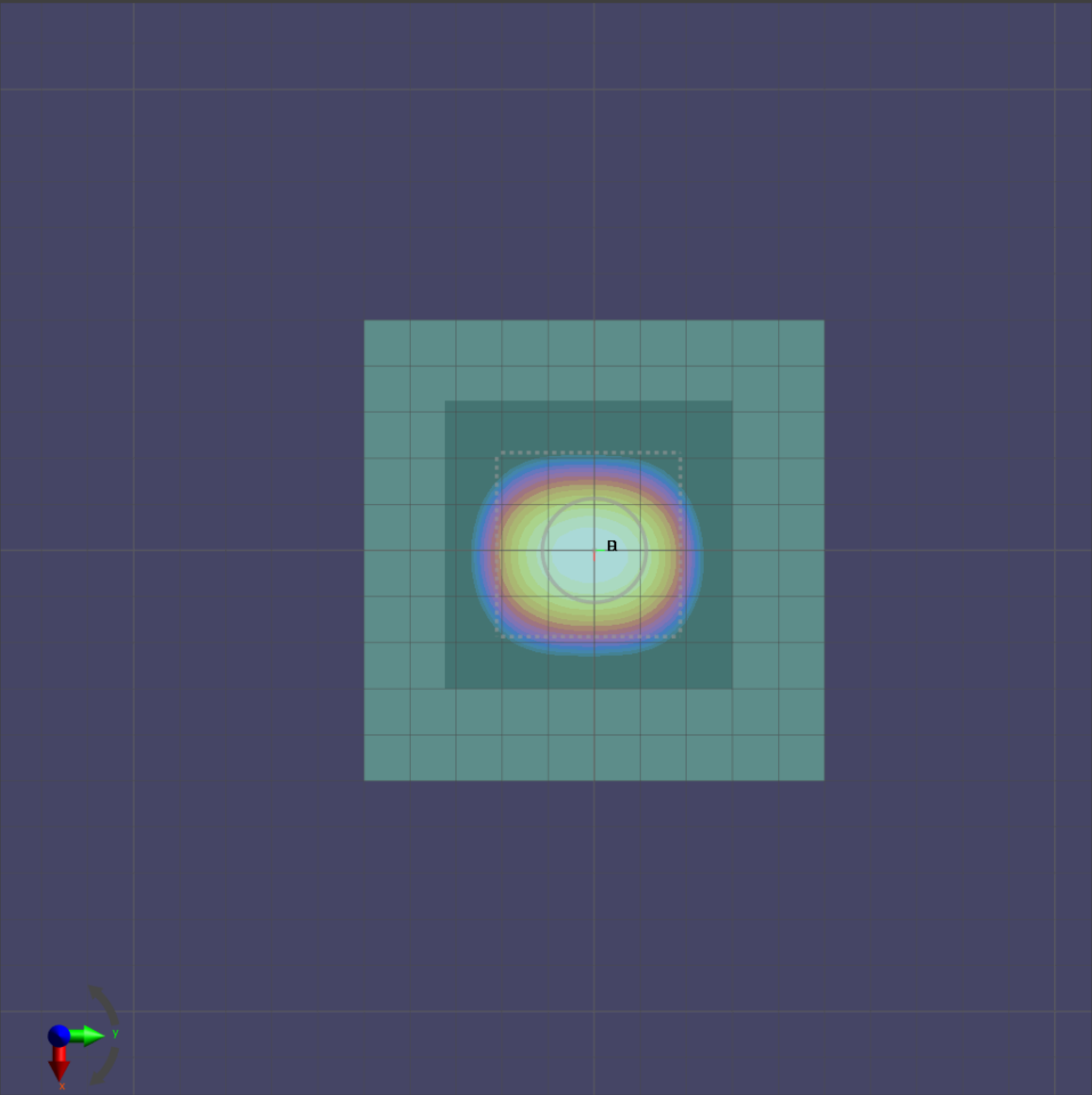
Grid Extents [mm]	60.0 x 60.0
Grid Steps [lambda]	0.25 x 0.25
Sensor Surface [mm]	5.55

**Measurement Results**

Date	2020-04-17, 01:33
Avg. Area [cm <sup>2</sup> ]	4.00
S <sub>avg inc</sub> [W/m <sup>2</sup> ]	30.7
S <sub>avg tot</sub> [W/m <sup>2</sup> ]	31.2
S <sub>peak</sub> [W/m <sup>2</sup> ]	45.2
E <sub>peak</sub> [V/m]	130
H <sub>peak</sub> [A/m]	0.351
Power Drift [dB]	-0.04

Averaged [4.0 cm<sup>2</sup>] |Re{S}|(x,y,z,f0) [dB(31.2W/m<sup>2</sup>)]

0



-10

Test Laboratory: Sporton International Inc.

#### Device Under Test Properties

Manufacturer	Dimensions [mm]	IMEI	DUT Type
	100.0 x 100.0 x 100.0		System Source

#### Exposure Conditions

Phantom Section	Position, Test Distance [mm]	Frequency [MHz]	Conversion Factor
5G	FRONT, 5.55	30000.0	1.0

#### Hardware Setup

Phantom	Medium	Probe, Calibration Date	DAE, Calibration Date
mmWave - xxxx	Air -	EUmmWV4 - SN9461_F1-78GHz, 2019-11-05	DAE4 Sn1424, 2020-01-24

#### Scans Setup

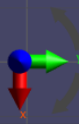
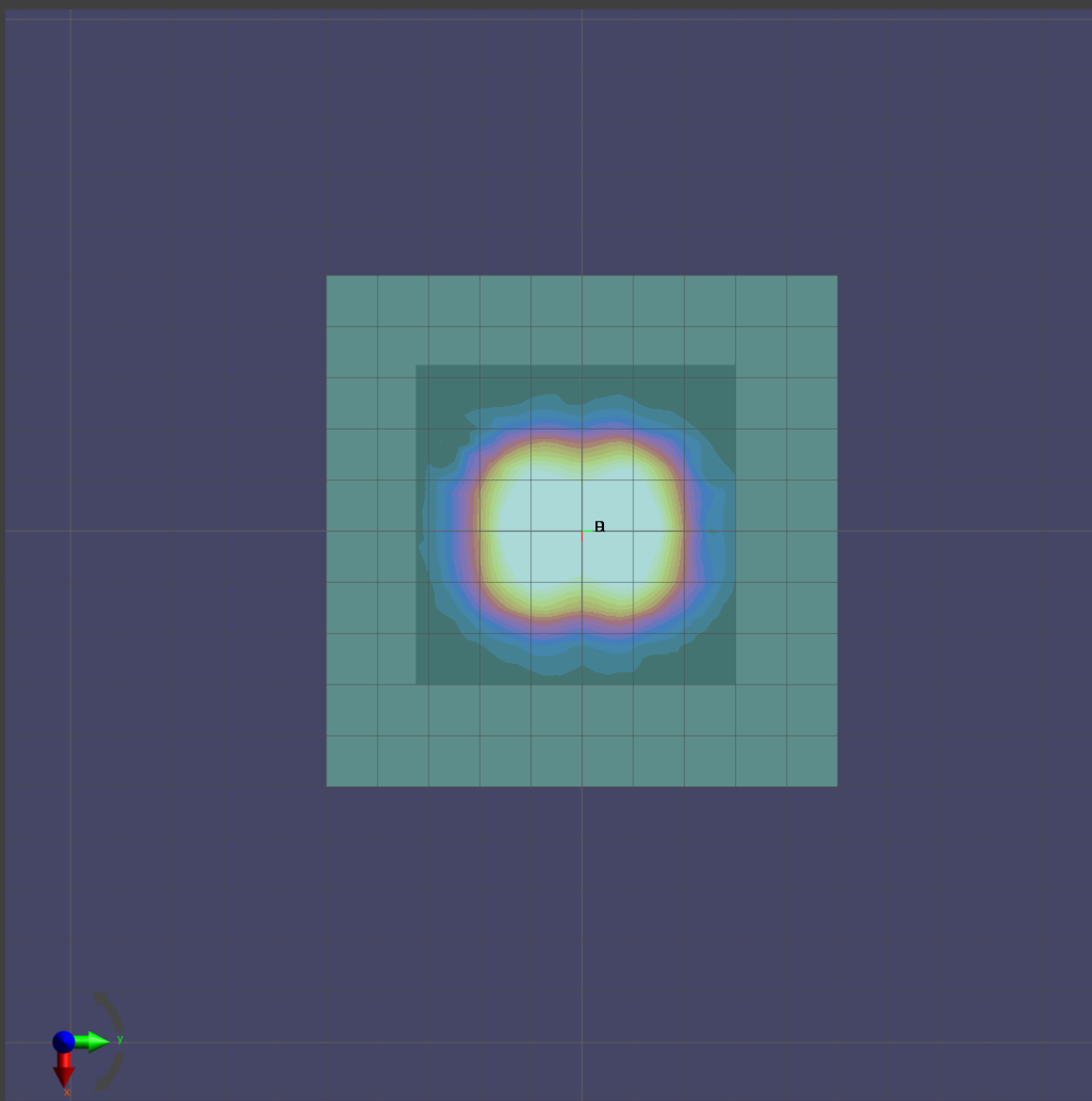
Grid Extents [mm]	60.0 x 60.0
Grid Steps [ $\lambda$ ]	0.25 x 0.25
Sensor Surface [mm]	5.55

#### Measurement Results

Date	2020-05-22, 11:55
Avg. Area [ $\text{cm}^2$ ]	4.00
$S_{\text{avg inc}}$ [ $\text{W}/\text{m}^2$ ]	33.3
$S_{\text{avg tot}}$ [ $\text{W}/\text{m}^2$ ]	33.7
$S_{\text{peak}}$ [ $\text{W}/\text{m}^2$ ]	47.8
$E_{\text{peak}}$ [V/m]	134
$H_{\text{peak}}$ [A/m]	0.359
Power Drift [dB]	-0.03

RMS{EM E(x,y,z,f0)} [dB(100V/m)]

0



-10

Test Laboratory: Sporton International Inc.

#### Device Under Test Properties

Manufacturer	Dimensions [mm]	IMEI	DUT Type
	100.0 x 100.0 x 100.0		System Source

#### Exposure Conditions

Phantom Section	Position, Test Distance [mm]	Frequency [MHz]	Conversion Factor
5G	FRONT, 5.55	30000.0	1.0

#### Hardware Setup

Phantom	Medium	Probe, Calibration Date	DAE, Calibration Date
mmWave - xxxx	Air -	EUmmWV4 - SN9461_F1-78GHz, 2019-11-05	DAE4 Sn1424, 2020-01-24

#### Scans Setup

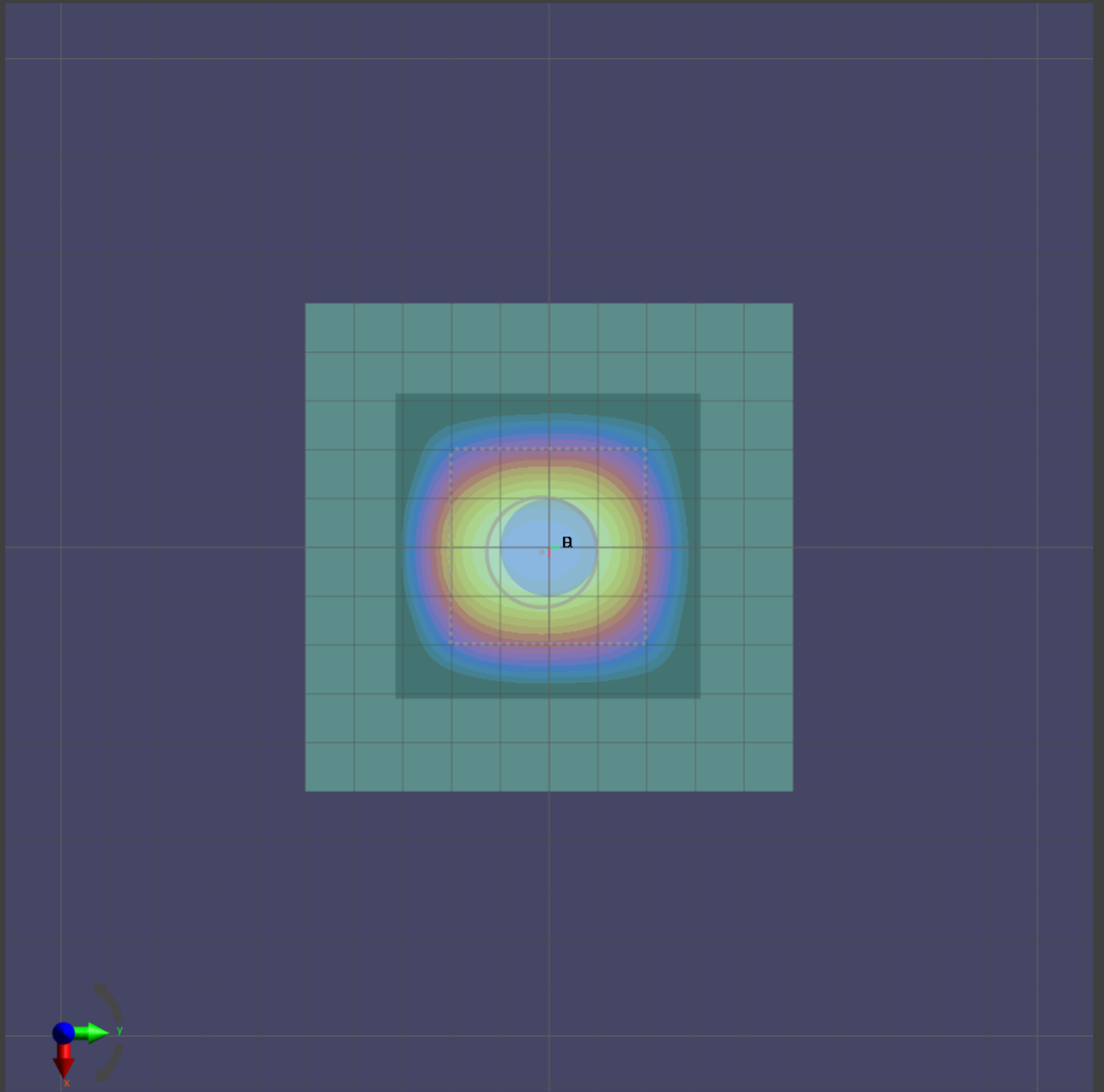
Grid Extents [mm]	60.0 x 60.0
Grid Steps [lambda]	0.25 x 0.25
Sensor Surface [mm]	5.55

#### Measurement Results

Date	2020-06-01, 02:07
Avg. Area [cm <sup>2</sup> ]	4.00
S <sub>avg inc</sub> [W/m <sup>2</sup> ]	37.6
S <sub>avg tot</sub> [W/m <sup>2</sup> ]	38.2
S <sub>peak</sub> [W/m <sup>2</sup> ]	51.9
E <sub>peak</sub> [V/m]	139
H <sub>peak</sub> [A/m]	0.381
Power Drift [dB]	0.04

Averaged [4.0 cm<sup>2</sup>] |Re{S}|(x,y,z,f0) [dB(38.2W/m<sup>2</sup>)]

0



-10