

System Check_Head_835MHz

DUT: D835V2 - SN4d167

Communication System: CW; Frequency: 835.000 MHz; Duty Cycle: 1:1

Medium: HSL_850_230918 Medium parameters used: $f = 835.000$ MHz; $\sigma = 0.909$ S/m; $\epsilon_r = 40.6$

Ambient Temperature: 23.6°C; Liquid Temperature: 22.6°C

DASY8 Configuration:

- Probe: EX3DV4 - SN3931; ConvF(9.85, 9.85, 9.85); Calibrated: 2022-10-31
- Sensor-Surface: 1.4 mm
- Electronics: DAE4 Sn1696; Calibrated: 2022-11-09
- Phantom: Twin-SAM V8.0 (30deg probe tilt); Serial: 2079; Section: Flat
- Measurement Software: 16.2.4.2524
- UID: CW, 0--

Pin=17.0dBm/Area Scan (40.0 mm x 90.0 mm): Measurement Grid: 10.0 mm x 15.0 mm

SAR (1g) = 0.475 W/kg; SAR (10g) = 0.313 W/kg;

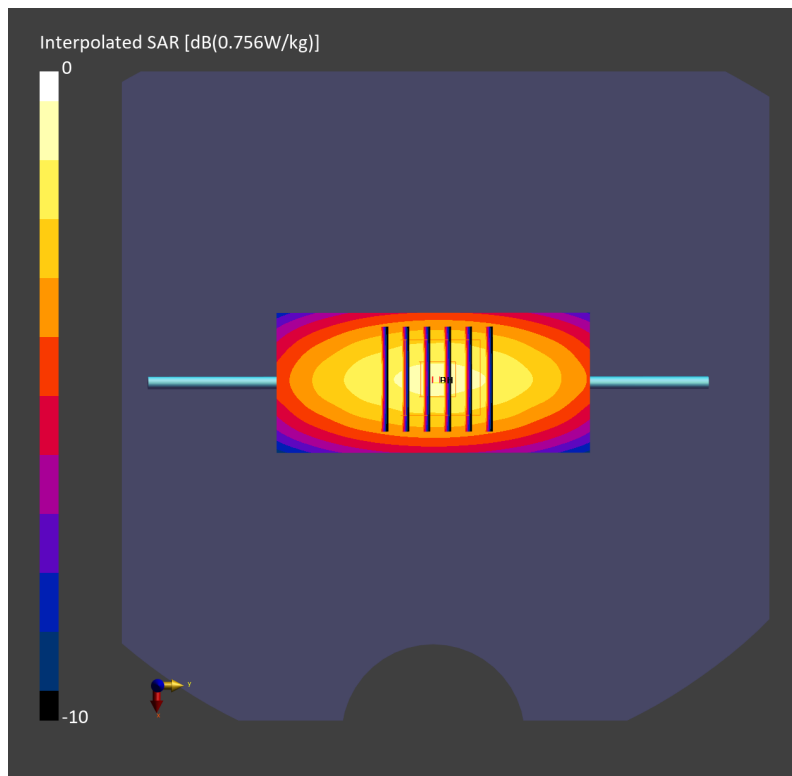
Pin=17.0dBm/Zoom Scan (30.0 mm x 30.0 mm x 30.0 mm): Measurement Grid: 6.0 mm x 6.0 mm x 1.5 mm

Power Drift = 0.04 dB

SAR (1g) = 0.482 W/kg; SAR (8g) = 0.334 W/kg; SAR (10g) = 0.316 W/kg

Smallest distance from peaks to all points 3 dB below => 15.0 mm

Ratio of SAR at M2 to SAR at M1 = 86.0 %



System Check_Head_835MHz

DUT: D835V2 - SN4d167

Communication System: CW; Frequency: 835.000 MHz; Duty Cycle: 1:1

Medium: HSL_850_231015 Medium parameters used: $f = 835.000$ MHz; $\sigma = 0.934$ S/m; $\epsilon_r = 41.8$

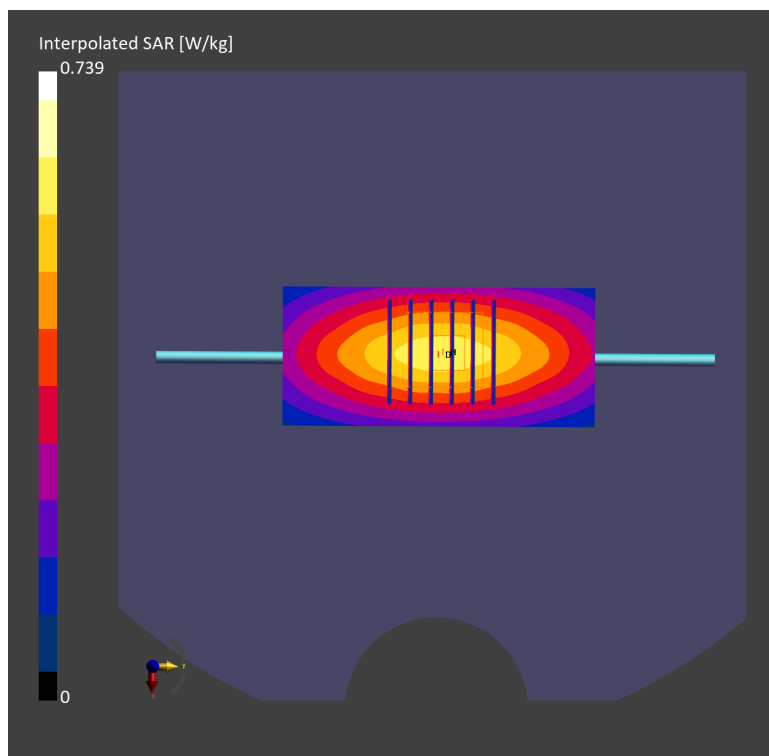
Ambient Temperature: 23.6°C; Liquid Temperature: 22.6°C

DASY8 Configuration:

- Probe: EX3DV4 - SN7692; ConvF(9.58, 9.16, 10.94); Calibrated: 2023-07-18
- Sensor-Surface: 1.4 mm
- Electronics: DAE4 Sn661; Calibrated: 2023-05-23
- Phantom: Twin-SAM V8.0 (30deg probe tilt); Serial: 2079_Gap; Section: Flat
- Measurement Software: 16.2.4.2524
- UID: CW, 0--

Pin=17.0dBm/Area Scan (40.0 mm x 90.0 mm): Measurement Grid: 10.0 mm x 15.0 mm
SAR (1g) = 0.518 W/kg; SAR (10g) = 0.341 W/kg;

Pin=17.0dBm/Zoom Scan (30.0 mm x 30.0 mm x 30.0 mm): Measurement Grid: 6.0 mm x 6.0 mm x 1.5 mm
Power Drift = 0.04 dB
SAR (1g) = 0.515 W/kg; SAR (8g) = 0.359 W/kg; SAR (10g) = 0.341 W/kg
Smallest distance from peaks to all points 3 dB below = 19.6 mm
Ratio of SAR at M2 to SAR at M1 = 90.6 %



System Check_Head_835MHz

DUT: D835V2 - SN4d167

Communication System: CW; Frequency: 835.000 MHz; Duty Cycle: 1:1

Medium: HSL_850_231018 Medium parameters used: $f=835.000$ MHz; $\sigma=0.922$ S/m; $\epsilon_r=41.4$

Ambient Temperature: 23.8°C; Liquid Temperature: 22.8°C

DASY6 Configuration:

- Probe: EX3DV4 - SN7700; ConvF(10.36, 10.36, 10.36); Calibrated: 2023-01-24
- Sensor-Surface: 1.4 mm
- Electronics: DAE4 Sn1707; Calibrated: 2022-12-15
- Phantom: Twin-SAM V8.0 (30deg probe tilt); Serial: 2079; Section: Flat
- Measurement Software: 16.2.4.2524
- UID: CW

Pin=17dBm/Area Scan (40.0 mm x 90.0 mm): Measurement Grid: 10.0 mm x 15.0 mm

SAR (1g) = 0.472 W/kg; SAR (10g) = 0.311 W/kg;

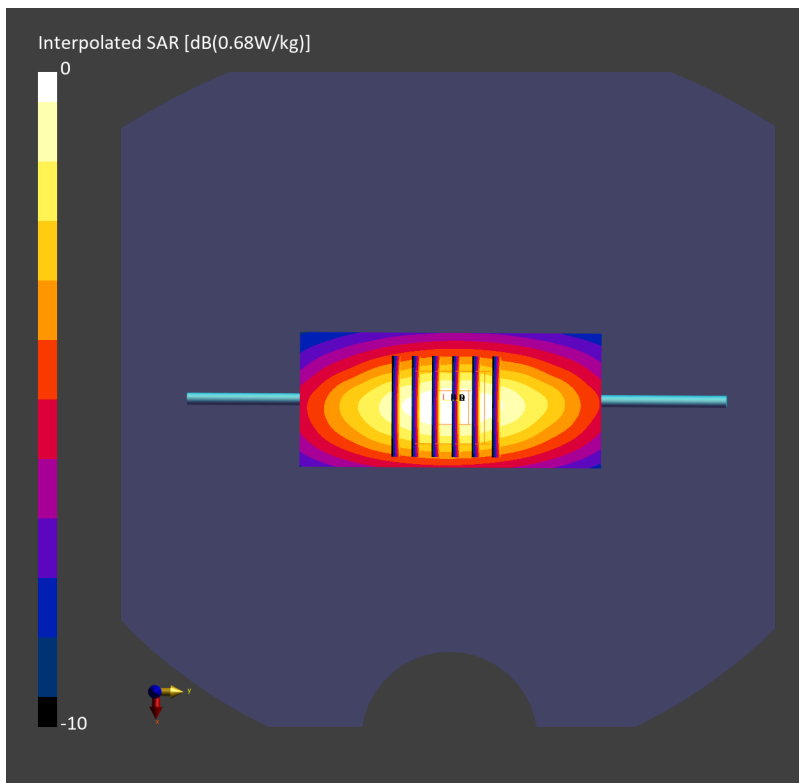
Pin=17dBm/Zoom Scan (30.0 mm x 30.0 mm x 30.0 mm): Measurement Grid: 6.0 mm x 6.0 mm x 1.5 mm

Power Drift = -0.03 dB

SAR (1g) = 0.471 W/kg; SAR (8g) = 0.329 W/kg; SAR (10g) = 0.312 W/kg

Smallest distance from peaks to all points 3 dB below = 19.0 mm

Ratio of SAR at M2 to SAR at M1 = 89.9 %



System Check_Head_1750MHz

DUT: D1750V2 - SN1112

Communication System: CW; Frequency: 1750.000 MHz; Duty Cycle: 1:1

Medium: HSL_1750_230916 Medium parameters used: $f = 1750.000$ MHz; $\sigma = 1.36$ S/m; $\epsilon_r = 40.5$

Ambient Temperature: 23.6°C; Liquid Temperature: 22.6°C

DASY8 Configuration:

- Probe: EX3DV4 - SN3931; ConvF(8.66, 8.66, 8.66); Calibrated: 2022-10-31
- Sensor-Surface: 1.4 mm
- Electronics: DAE4 Sn1696; Calibrated: 2022-11-09
- Phantom: Twin-SAM V8.0 (30deg probe tilt); Serial: 2079; Section: Flat
- Measurement Software: 16.2.4.2524
- UID: CW, 0--

Pin=17.0dBm/Area Scan (40.0 mm x 90.0 mm): Measurement Grid: 10.0 mm x 15.0 mm

SAR (1g) = 1.70 W/kg; SAR (10g) = 0.916 W/kg;

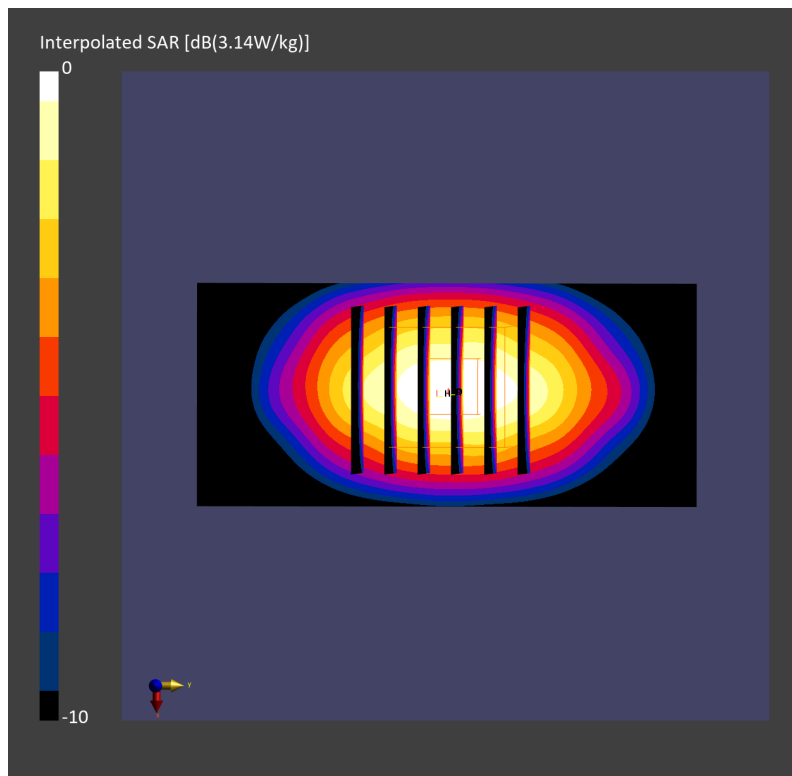
Pin=17.0dBm/Zoom Scan (30.0 mm x 30.0 mm x 30.0 mm): Measurement Grid: 6.0 mm x 6.0 mm x 1.5 mm

Power Drift = -0.01 dB

SAR (1g) = 1.72 W/kg; SAR (8g) = 1.01 W/kg; SAR (10g) = 0.935 W/kg

Smallest distance from peaks to all points 3 dB below = 10.8 mm

Ratio of SAR at M2 to SAR at M1 = 83.4 %



System Check_Head_1750MHz

DUT: D1750V2 - SN1112

Communication System: CW; Frequency: 1750.000 MHz; Duty Cycle: 1:1

Medium: HSL_1750_230921 Medium parameters used: $f=1750.000$ MHz; $\sigma=1.36$ S/m; $\epsilon_r=40.8$

Ambient Temperature: 23.6°C; Liquid Temperature: 22.6°C

DASY8 Configuration:

- Probe: EX3DV4 - SN3931; ConvF(8.66, 8.66, 8.66); Calibrated: 2022-10-31
- Sensor-Surface: 1.4 mm
- Electronics: DAE4 Sn1696; Calibrated: 2022-11-09
- Phantom: Twin-SAM V8.0 (30deg probe tilt); Serial: 2079_Gap; Section: Flat
- Measurement Software: 16.2.4.2524
- UID: CW, 0--

Pin=17.0dBm/Area Scan (40.0 mm x 90.0 mm): Measurement Grid: 10.0 mm x 15.0 mm

SAR (1g) = 1.73 W/kg; SAR (10g) = 0.925 W/kg;

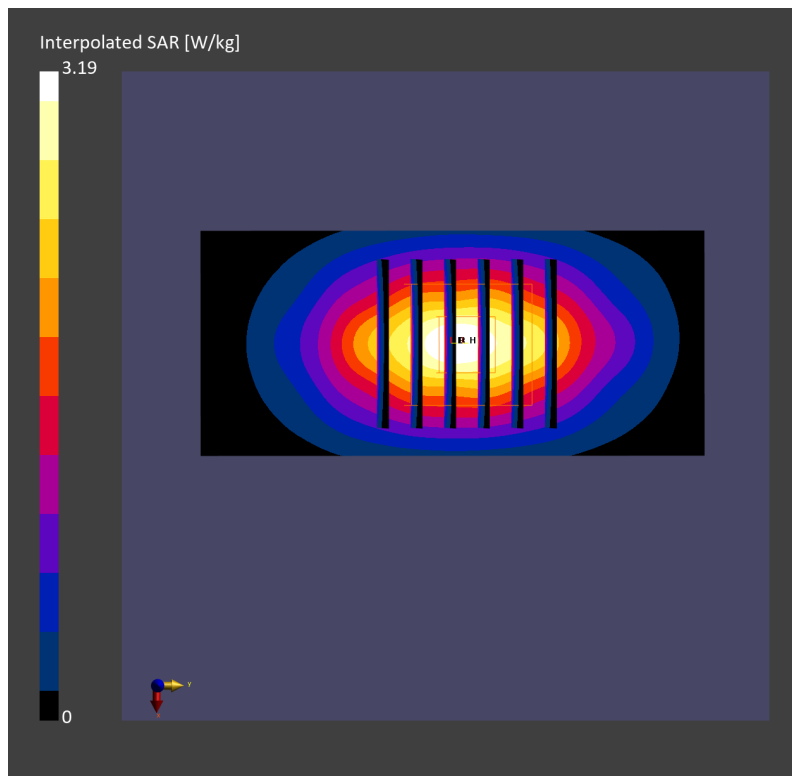
Pin=17.0dBm/Zoom Scan (30.0 mm x 30.0 mm x 30.0 mm): Measurement Grid: 6.0 mm x 6.0 mm x 1.5 mm

Power Drift = 0.03 dB

SAR (1g) = 1.73 W/kg; SAR (8g) = 1.01 W/kg; SAR (10g) = 0.937 W/kg

Smallest distance from peaks to all points 3 dB below = 10.3 mm

Ratio of SAR at M2 to SAR at M1 = 82.1 %



System Check_Head_1750MHz

DUT: D1750V2 - SN1112

Communication System: CW; Frequency: 1750.000 MHz; Duty Cycle: 1:1

Medium: HSL_1750_231013 Medium parameters used: $f = 1750.000$ MHz; $\sigma = 1.36$ S/m; $\epsilon_r = 40.6$

Ambient Temperature: 23.7°C; Liquid Temperature: 22.7°C

DASY8 Configuration:

- Probe: EX3DV4 - SN7692; ConvF(8.53, 8.33, 9.75); Calibrated: 2023-07-18
- Sensor-Surface: 1.4 mm
- Electronics: DAE4 Sn661; Calibrated: 2023-05-23
- Phantom: Twin-SAM V8.0 (30deg probe tilt); Serial: 2079_Gap; Section: Flat
- Measurement Software: 16.2.4.2524
- UID: CW

Pin=17dBm/Area Scan (40.0 mm x 90.0 mm): Measurement Grid: 10.0 mm x 15.0 mm

SAR (1g) = 1.65 W/kg; SAR (10g) = 0.877 W/kg;

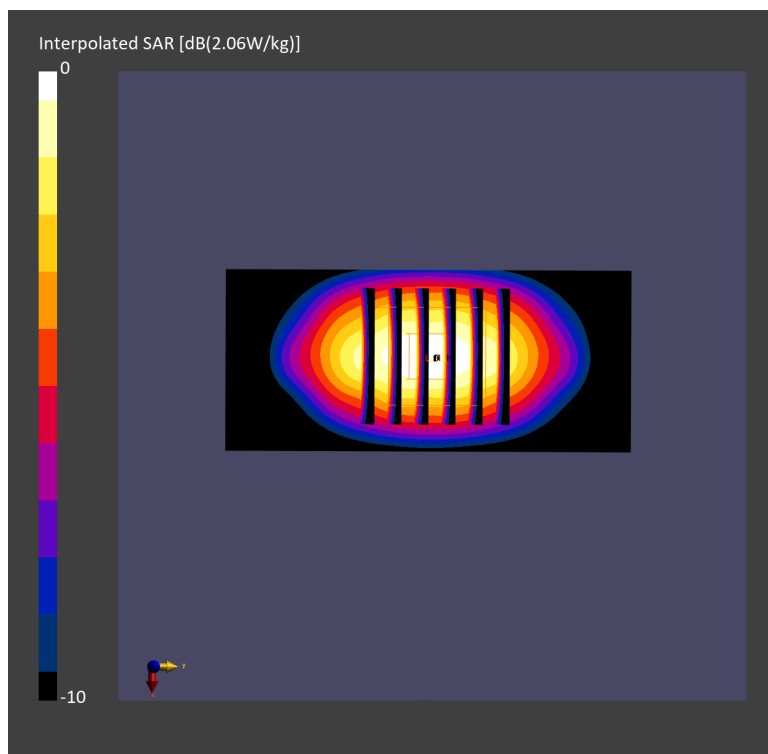
Pin=17dBm/Zoom Scan (30.0 mm x 30.0 mm x 30.0 mm): Measurement Grid: 6.0 mm x 6.0 mm x 1.5 mm

Power Drift = -0.13 dB

SAR (1g) = 1.68 W/kg; SAR (8g) = 0.977 W/kg; SAR (10g) = 0.902 W/kg

Smallest distance from peaks to all points 3 dB below = 10.8 mm

Ratio of SAR at M2 to SAR at M1 = 84.9 %



System Check_Head_1750MHz

DUT: D1750V2 - SN1112

Communication System: CW; Frequency: 1750.000 MHz; Duty Cycle: 1:1
Medium: HSL_1750_231014 Medium parameters used: $f=1750.000$ MHz; $\sigma=1.37$ S/m; $\epsilon_r=40.2$
Ambient Temperature: 23.4°C; Liquid Temperature: 22.4°C

DASY6 Configuration:

- Probe: EX3DV4 - SN7700; ConvF(9.21, 9.21, 9.21); Calibrated: 2023-01-24
- Sensor-Surface: 1.4 mm
- Electronics: DAE4 Sn1707; Calibrated: 2022-12-15
- Phantom: Twin-SAM V8.0 (30deg probe tilt); Serial: 2079_For Gap; Section: Flat
- Measurement Software: 16.2.4.2524
- UID: CW

Pin=17dBm/Area Scan (40.0 mm x 90.0 mm): Measurement Grid: 10.0 mm x 15.0 mm
SAR (1g) = 1.68 W/kg; SAR (10g) = 0.906 W/kg;

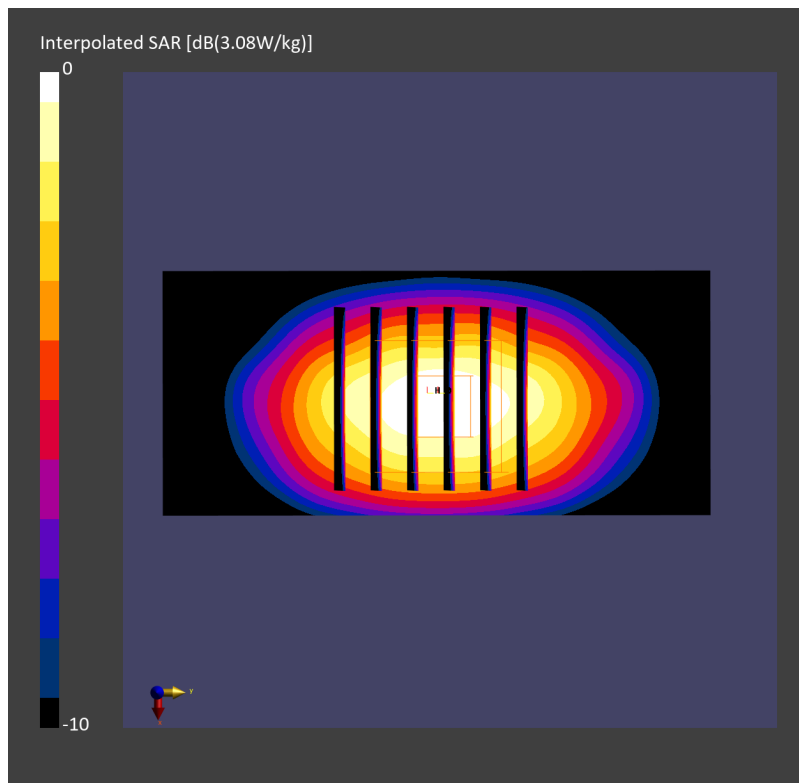
Pin=17dBm/Zoom Scan (30.0 mm x 30.0 mm x 30.0 mm): Measurement Grid: 6.0 mm x 6.0 mm x 1.5 mm

Power Drift = -0.00 dB

SAR (1g) = 1.68 W/kg; SAR (8g) = 0.978 W/kg; SAR (10g) = 0.903 W/kg

Smallest distance from peaks to all points 3 dB below = 10.8 mm

Ratio of SAR at M2 to SAR at M1 = 82.4 %



System Check_Head_1750MHz

DUT: D1750V2 - SN1112

Communication System: CW; Frequency: 1750.000 MHz; Duty Cycle: 1:1

Medium: HSL_1750_231025 Medium parameters used: $f=1750.000$ MHz; $\sigma=1.37$ S/m; $\epsilon_r=40.7$

Ambient Temperature: 23.5°C; Liquid Temperature: 22.5°C

DASY6 Configuration:

- Probe: EX3DV4 - SN7700; ConvF(9.21, 9.21, 9.21); Calibrated: 2023-01-24
- Sensor-Surface: 1.4 mm
- Electronics: DAE4 Sn1707; Calibrated: 2022-12-15
- Phantom: Twin-SAM V8.0 (30deg probe tilt); Serial: 2079_For Gap; Section: Flat
- Measurement Software: 16.2.4.2524
- UID: CW

Pin=17.0dBm/Area Scan (40.0 mm x 90.0 mm): Measurement Grid: 10.0 mm x 15.0 mm

SAR (1g) = 1.69 W/kg; SAR (10g) = 0.906 W/kg;

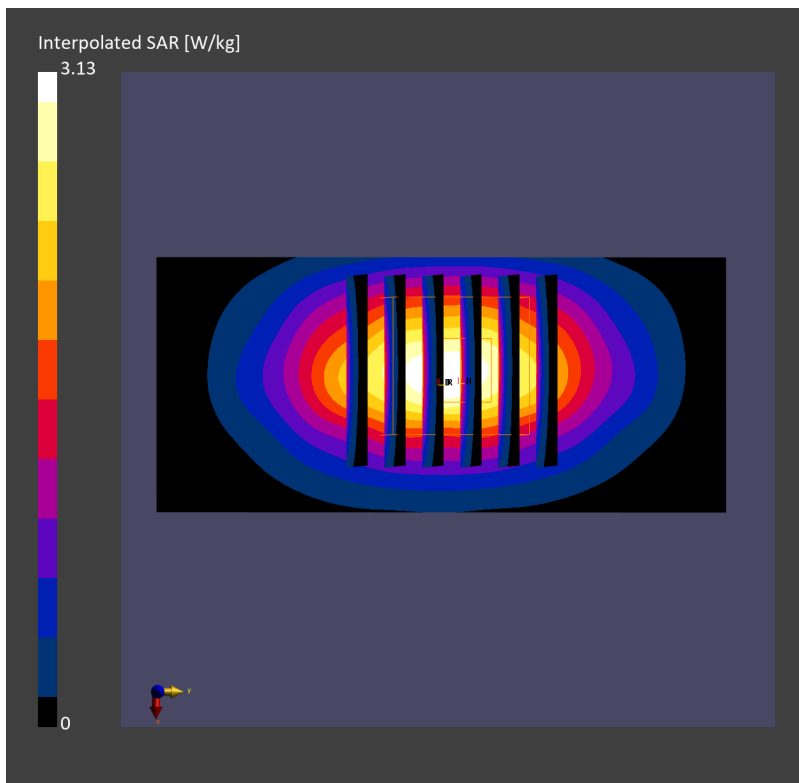
Pin=17.0dBm/Zoom Scan (30.0 mm x 30.0 mm x 30.0 mm): Measurement Grid: 6.0 mm x 6.0 mm x 1.5 mm

Power Drift = -0.01 dB

SAR (1g) = 1.70 W/kg; SAR (8g) = 0.985 W/kg; SAR (10g) = 0.909 W/kg

Smallest distance from peaks to all points 3 dB below = 9.7 mm

Ratio of SAR at M2 to SAR at M1 = 83.4 %



System Check_Head_1900MHz

DUT: D1900V2 - SN5d185

Communication System: CW; Frequency: 1900.000 MHz; Duty Cycle: 1:1

Medium: HSL_1900_230915 Medium parameters used: $f=1900.000$ MHz; $\sigma=1.42$ S/m; $\epsilon_r=40.6$

Ambient Temperature: 23.4°C; Liquid Temperature: 22.4°C

DASY8 Configuration:

- Probe: EX3DV4 - SN3931; ConvF(8.36, 8.36, 8.36); Calibrated: 2022-10-31
- Sensor-Surface: 1.4 mm
- Electronics: DAE4 Sn1696; Calibrated: 2022-11-09
- Phantom: Twin-SAM V8.0 (30deg probe tilt); Serial: 2079; Section: Flat
- Measurement Software: 16.2.4.2524
- UID: CW, 0--

Pin=17.0dBm/Area Scan (40.0 mm x 90.0 mm): Measurement Grid: 10.0 mm x 15.0 mm

SAR (1g) = 1.92 W/kg; SAR (10g) = 0.997 W/kg;

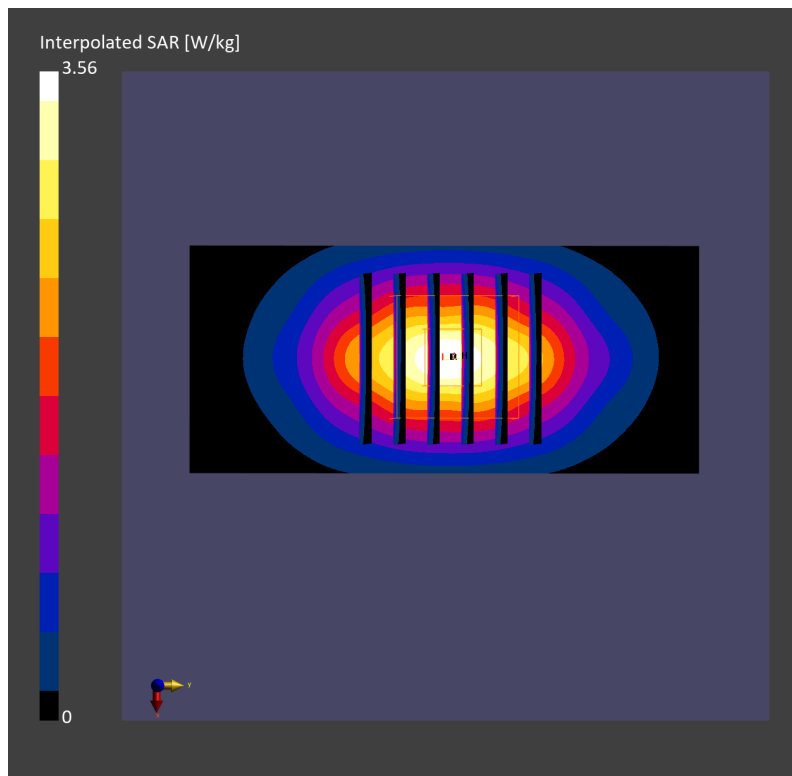
Pin=17.0dBm/Zoom Scan (30.0 mm x 30.0 mm x 30.0 mm): Measurement Grid: 6.0 mm x 6.0 mm x 1.5 mm

Power Drift = 0.01 dB

SAR (1g) = 1.92 W/kg; SAR (8g) = 1.10 W/kg; SAR (10g) = 1.02 W/kg

Smallest distance from peaks to all points 3 dB below = 10.8 mm

Ratio of SAR at M2 to SAR at M1 = 83.0 %



System Check_Head_1900MHz

DUT: D1900V2 - SN5d185

Communication System: CW; Frequency: 1900.000 MHz; Duty Cycle: 1:1

Medium: HSL_1900_230920 Medium parameters used: $f=1900.000$ MHz; $\sigma=1.42$ S/m; $\epsilon_r=40.8$

Ambient Temperature: 23.7°C; Liquid Temperature: 22.7°C

DASY8 Configuration:

- Probe: EX3DV4 - SN3931; ConvF(8.36, 8.36, 8.36); Calibrated: 2022-10-31
- Sensor-Surface: 1.4 mm
- Electronics: DAE4 Sn1696; Calibrated: 2022-11-09
- Phantom: Twin-SAM V8.0 (30deg probe tilt); Serial: 2079_Gap; Section: Flat
- Measurement Software: 16.2.4.2524
- UID: CW

Pin=17dBm/Area Scan (40.0 mm x 90.0 mm): Measurement Grid: 10.0 mm x 15.0 mm

SAR (1g) = 1.90 W/kg; SAR (10g) = 1.00 W/kg;

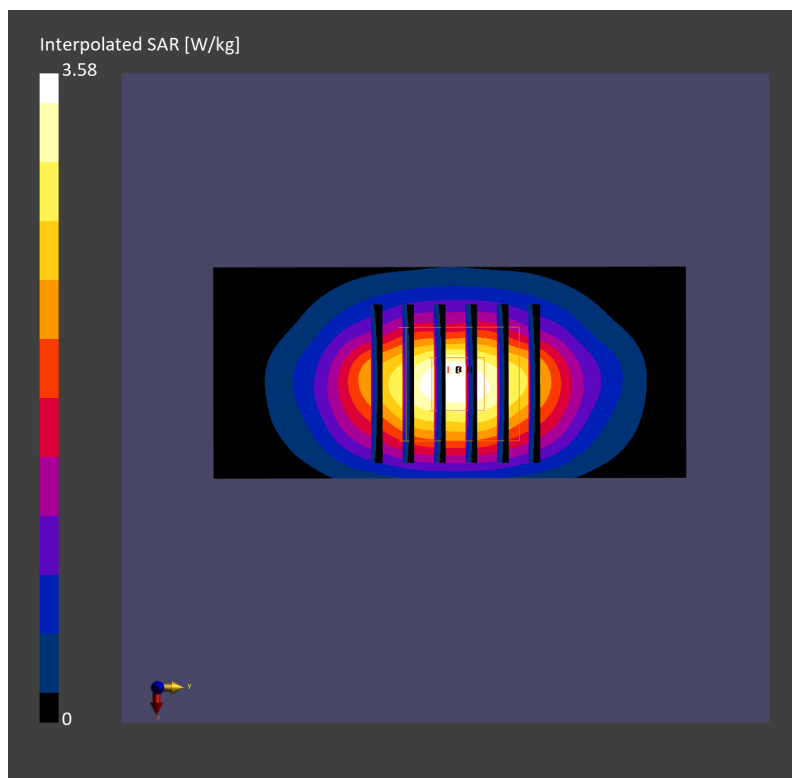
Pin=17dBm/Zoom Scan (30.0 mm x 30.0 mm x 30.0 mm): Measurement Grid: 6.0 mm x 6.0 mm x 1.5 mm

Power Drift = -0.00 dB

SAR (1g) = 1.93 W/kg; SAR (8g) = 1.11 W/kg; SAR (10g) = 1.02 W/kg

Smallest distance from peaks to all points 3 dB below = 10.8 mm

Ratio of SAR at M2 to SAR at M1 = 82.1 %



System Check_Head_1900MHz

DUT: D1900V2 - SN5d185

Communication System: CW; Frequency: 1900.000 MHz; Duty Cycle: 1:1

Medium: HSL_1900_231014 Medium parameters used: $f=1900.000$ MHz; $\sigma=1.45$ S/m; $\epsilon_r=38.7$

Ambient Temperature: 23.4°C; Liquid Temperature: 22.4°C

DASY6 Configuration:

- Probe: EX3DV4 - SN7700; ConvF(8.75, 8.75, 8.75); Calibrated: 2023-01-24
- Sensor-Surface: 1.4 mm
- Electronics: DAE4 Sn1707; Calibrated: 2022-12-15
- Phantom: Twin-SAM V8.0 (30deg probe tilt); Serial: 2079_For Gap; Section: Flat
- Measurement Software: 16.2.4.2524
- UID: CW

Pin=17dBm/Area Scan (40.0 mm x 90.0 mm): Measurement Grid: 10.0 mm x 15.0 mm
SAR (1g) = 1.92 W/kg; SAR (10g) = 1.00 W/kg;

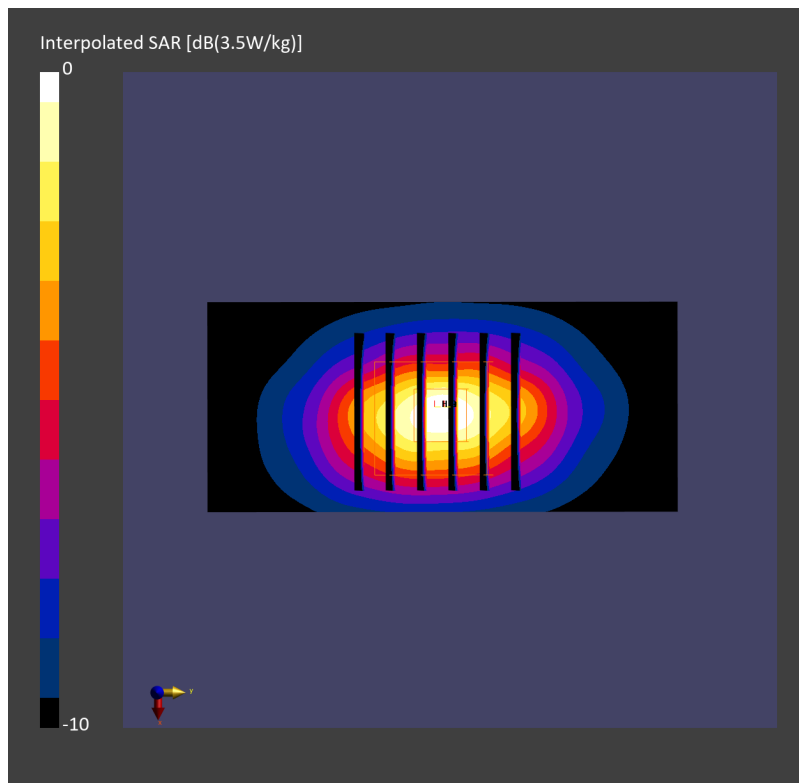
Pin=17dBm/Zoom Scan (30.0 mm x 30.0 mm x 30.0 mm): Measurement Grid: 6.0 mm x 6.0 mm x 1.5 mm

Power Drift = 0.00 dB

SAR (1g) = 1.91 W/kg; SAR (8g) = 1.09 W/kg; SAR (10g) = 1.00 W/kg

Smallest distance from peaks to all points 3 dB below = 9.6 mm

Ratio of SAR at M2 to SAR at M1 = 82.9 %



System Check_Head_1900MHz

DUT: D1900V2 - SN5d185

Communication System: CW; Frequency: 1900.000 MHz; Duty Cycle: 1:1

Medium: HSL_1900_231016 Medium parameters used: $f = 1900.000$ MHz; $\sigma = 1.45$ S/m; $\epsilon_r = 39.3$

Ambient Temperature: 23.7°C; Liquid Temperature: 22.7°C

DASY8 Configuration:

- Probe: EX3DV4 - SN7692; ConvF(8.18, 7.89, 9.24); Calibrated: 2023-07-18
- Sensor-Surface: 1.4 mm
- Electronics: DAE4 Sn661; Calibrated: 2023-05-23
- Phantom: Twin-SAM V8.0 (30deg probe tilt); Serial: 2079_Gap; Section: Flat
- Measurement Software: 16.2.4.2524
- UID: CW, 0--

Pin=17.0dBm/Area Scan (40.0 mm x 90.0 mm): Measurement Grid: 10.0 mm x 15.0 mm

SAR (1g) = 2.00 W/kg; SAR (10g) = 1.03 W/kg;

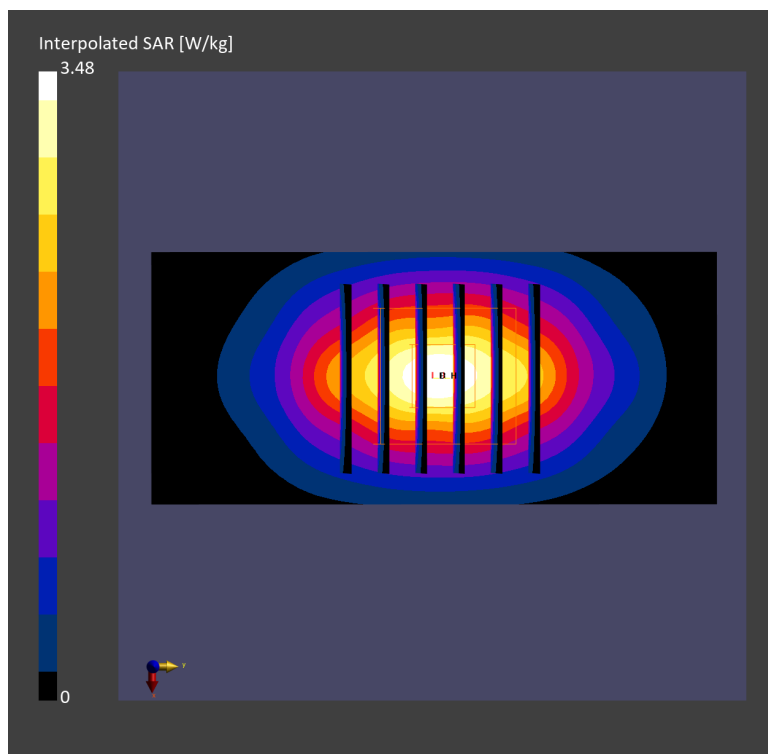
Pin=17.0dBm/Zoom Scan (30.0 mm x 30.0 mm x 30.0 mm): Measurement Grid: 6.0 mm x 6.0 mm x 1.5 mm

Power Drift = -0.02 dB

SAR (1g) = 1.98 W/kg; SAR (8g) = 1.14 W/kg; SAR (10g) = 1.05 W/kg

Smallest distance from peaks to all points 3 dB below = 10.8 mm

Ratio of SAR at M2 to SAR at M1 = 85.3 %



System Check_Head_1900MHz

DUT: D1900V2 - SN5d185

Communication System: CW; Frequency: 1900.000 MHz; Duty Cycle: 1:1
Medium: HSL_1900_231018 Medium parameters used: $f=1900.000$ MHz; $\sigma=1.43$ S/m; $\epsilon_r=39.0$
Ambient Temperature: 23.8°C; Liquid Temperature: 22.8°C

DASY6 Configuration:

- Probe: EX3DV4 - SN7700; ConvF(8.75, 8.75, 8.75); Calibrated: 2023-01-24
- Sensor-Surface: 1.4 mm
- Electronics: DAE4 Sn1707; Calibrated: 2022-12-15
- Phantom: Twin-SAM V8.0 (30deg probe tilt); Serial: 2079_For Gap; Section: Flat
- Measurement Software: 16.2.4.2524
- UID: CW

Pin=17dBm/Area Scan (40.0 mm x 90.0 mm): Measurement Grid: 10.0 mm x 15.0 mm
SAR (1g) = 1.94 W/kg; SAR (10g) = 0.997 W/kg;

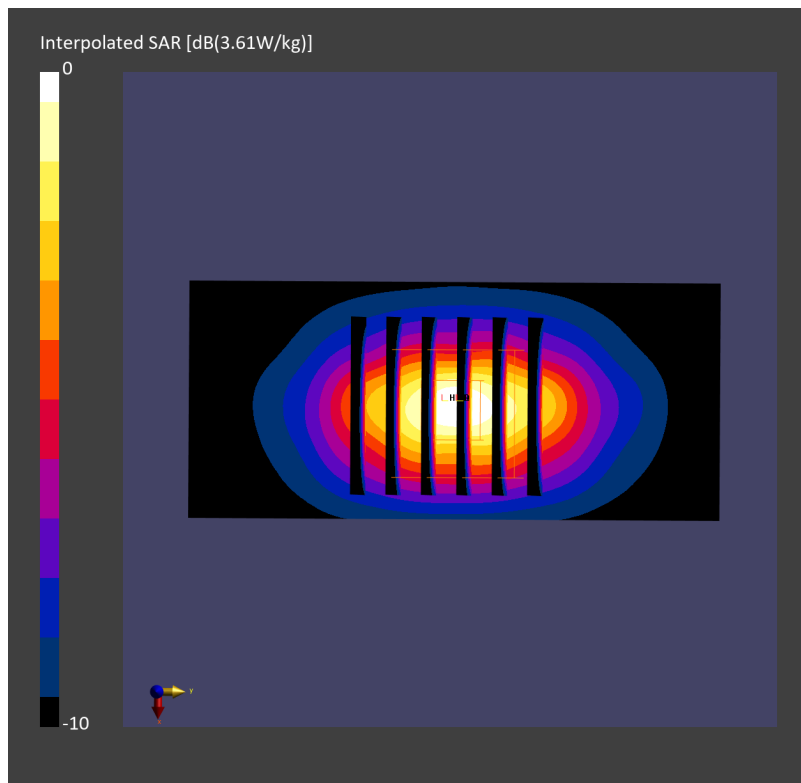
Pin=17dBm/Zoom Scan (30.0 mm x 30.0 mm x 30.0 mm): Measurement Grid: 6.0 mm x 6.0 mm x 1.5 mm

Power Drift = -0.02 dB

SAR (1g) = 1.96 W/kg; SAR (8g) = 1.11 W/kg; SAR (10g) = 1.02 W/kg

Smallest distance from peaks to all points 3 dB below = 9.6 mm

Ratio of SAR at M2 to SAR at M1 = 83.3 %



System Check_Head_1900MHz

DUT: D1900V2 - SN5d185

Communication System: CW; Frequency: 1900.000 MHz; Duty Cycle: 1:1

Medium: HSL_1900_231025 Medium parameters used: $f=1900.000$ MHz; $\sigma=1.44$ S/m; $\epsilon_r=39.2$

Ambient Temperature: 23.5°C; Liquid Temperature: 22.5°C

DASY6 Configuration:

- Probe: EX3DV4 - SN7700; ConvF(8.75, 8.75, 8.75); Calibrated: 2023-01-24
- Sensor-Surface: 1.4 mm
- Electronics: DAE4 Sn1707; Calibrated: 2022-12-15
- Phantom: Twin-SAM V8.0 (30deg probe tilt); Serial: 2079_For Gap; Section: Flat
- Measurement Software: 16.2.4.2524
- UID: CW

Pin=17.0dBm/Area Scan (40.0 mm x 90.0 mm): Measurement Grid: 10.0 mm x 15.0 mm

SAR (1g) = 1.92 W/kg; SAR (10g) = 0.985 W/kg;

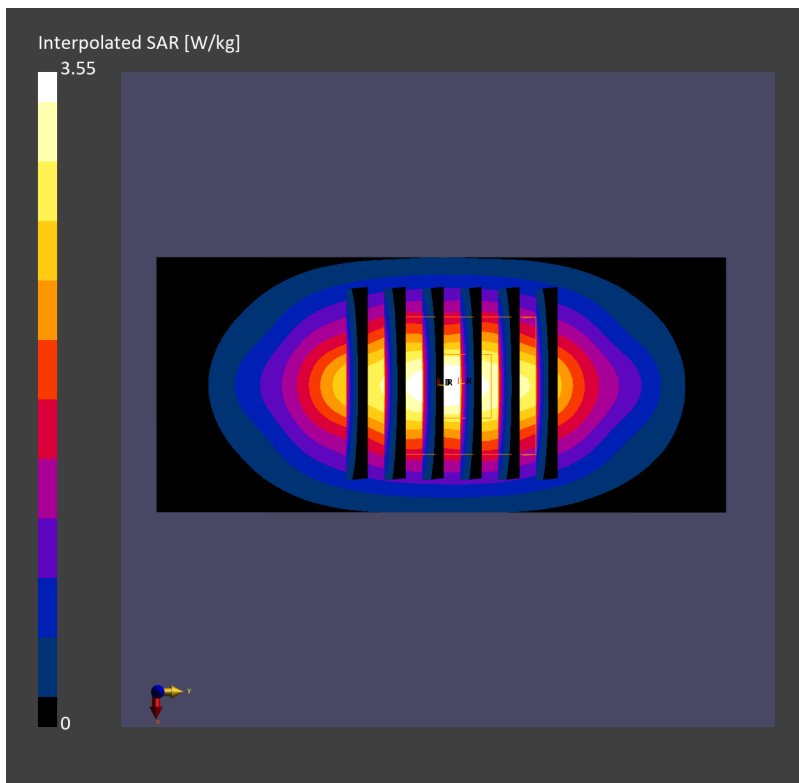
Pin=17.0dBm/Zoom Scan (30.0 mm x 30.0 mm x 30.0 mm): Measurement Grid: 6.0 mm x 6.0 mm x 1.5 mm

Power Drift = -0.00 dB

SAR (1g) = 1.90 W/kg; SAR (8g) = 1.07 W/kg; SAR (10g) = 0.989 W/kg

Smallest distance from peaks to all points 3 dB below = 9.6 mm

Ratio of SAR at M2 to SAR at M1 = 82.5 %



System Check_Head_3500MHz

DUT: D3500V2 - SN1036

Communication System: CW; Frequency: 3500.000 MHz; Duty Cycle: 1:1
Medium: HSL_3500_231016 Medium parameters used: $f=3500.000$ MHz; $\sigma=2.92$ S/m; $\epsilon_r=37.2$
Ambient Temperature: 23.5°C; Liquid Temperature: 22.5°C

DASY6 Configuration:

- Probe: EX3DV4 - SN7700; ConvF(7.29, 7.29, 7.29); Calibrated: 2023-01-24
- Sensor-Surface: 1.4 mm
- Electronics: DAE4 Sn1707; Calibrated: 2022-12-15
- Phantom: Twin-SAM V8.0 (30deg probe tilt); Serial: 2079; Section: Flat
- Measurement Software: 16.2.4.2524
- UID: CW

Pin=17dBm/Area Scan (40.0 mm x 80.0 mm): Measurement Grid: 10.0 mm x 10.0 mm
SAR (1g) = 3.16 W/kg; SAR (10g) = 1.21 W/kg;

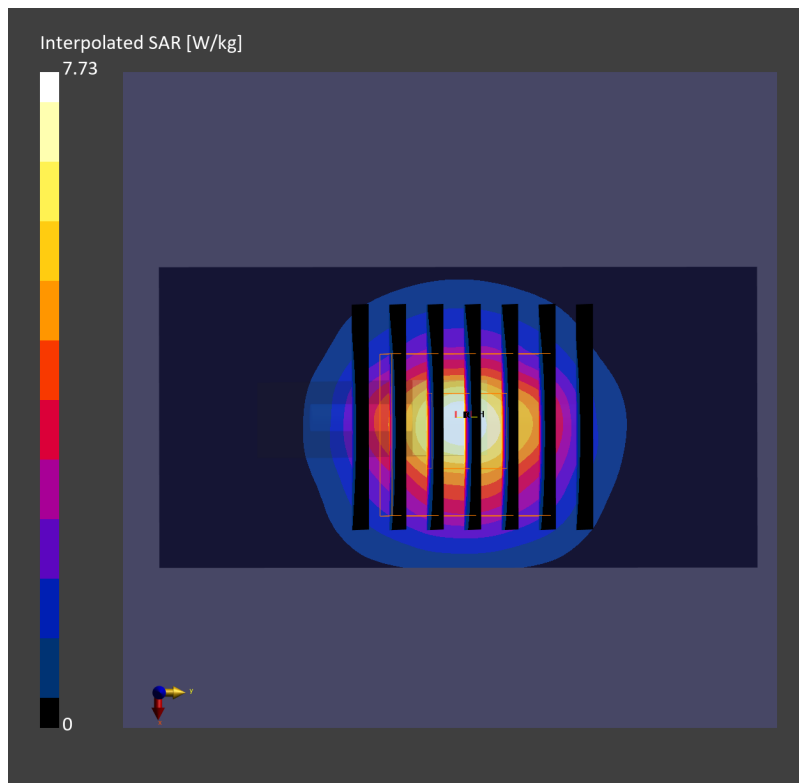
Pin=17dBm/Zoom Scan (28.0 mm x 28.0 mm x 28.0 mm): Measurement Grid: 5.0 mm x 5.0 mm x 1.4 mm

Power Drift = -0.12 dB

SAR (1g) = 3.14 W/kg; SAR (8g) = 1.37 W/kg; SAR (10g) = 1.21 W/kg

Smallest distance from peaks to all points 3 dB below = 8.6 mm

Ratio of SAR at M2 to SAR at M1 = 76.8 %



System Check_Head_3500MHz

DUT: D3500V2 - SN1036

Communication System: CW; Frequency: 3500.000 MHz; Duty Cycle: 1:1
Medium: HSL_3500_231017 Medium parameters used: $f=3500.000$ MHz; $\sigma=2.92$ S/m; $\epsilon_r=37.1$
Ambient Temperature: 23.7°C; Liquid Temperature: 22.7°C

DASY6 Configuration:

- Probe: EX3DV4 - SN7700; ConvF(7.29, 7.29, 7.29); Calibrated: 2023-01-24
- Sensor-Surface: 1.4 mm
- Electronics: DAE4 Sn1707; Calibrated: 2022-12-15
- Phantom: Twin-SAM V8.0 (30deg probe tilt); Serial: 2079_For Gap; Section: Flat
- Measurement Software: 16.2.4.2524
- UID: CW

Pin=17dBm/Area Scan (40.0 mm x 80.0 mm): Measurement Grid: 10.0 mm x 10.0 mm
SAR (1g) = 3.23 W/kg; SAR (10g) = 1.20 W/kg;

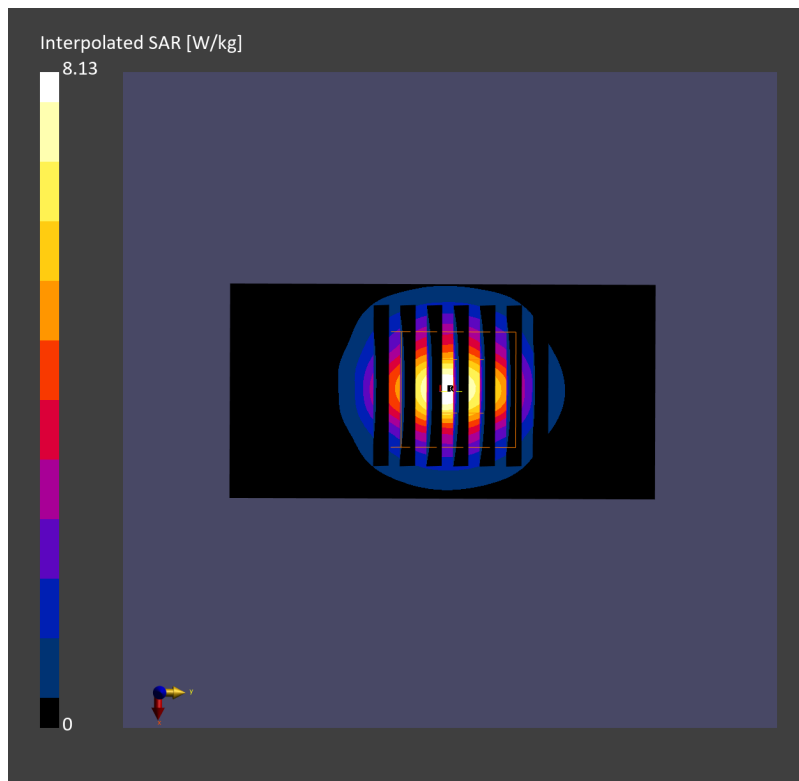
Pin=17dBm/Zoom Scan (28.0 mm x 28.0 mm x 28.0 mm): Measurement Grid: 5.0 mm x 5.0 mm x 1.4 mm

Power Drift = 0.01 dB

SAR (1g) = 3.30 W/kg; SAR (8g) = 1.43 W/kg; SAR (10g) = 1.27 W/kg

Smallest distance from peaks to all points 3 dB below = 8.0 mm

Ratio of SAR at M2 to SAR at M1 = 77.2 %



System Check_Head_3700MHz

DUT: D3700V2 - SN1006

Communication System: CW; Frequency: 3700.000 MHz; Duty Cycle: 1:1
Medium: HSL_3700_231016 Medium parameters used: $f=3700.000$ MHz; $\sigma=3.10$ S/m; $\epsilon_r=36.9$
Ambient Temperature: 23.5°C; Liquid Temperature: 22.5°C

DASY6 Configuration:

- Probe: EX3DV4 - SN7700; ConvF(7.25, 7.25, 7.25); Calibrated: 2023-01-24
- Sensor-Surface: 1.4 mm
- Electronics: DAE4 Sn1707; Calibrated: 2022-12-15
- Phantom: Twin-SAM V8.0 (30deg probe tilt); Serial: 2079_For Gap; Section: Flat
- Measurement Software: 16.2.4.2524
- UID: CW

Pin=17dBm/Area Scan (40.0 mm x 80.0 mm): Measurement Grid: 10.0 mm x 10.0 mm
SAR (1g) = 2.91 W/kg; SAR (10g) = 1.07 W/kg;

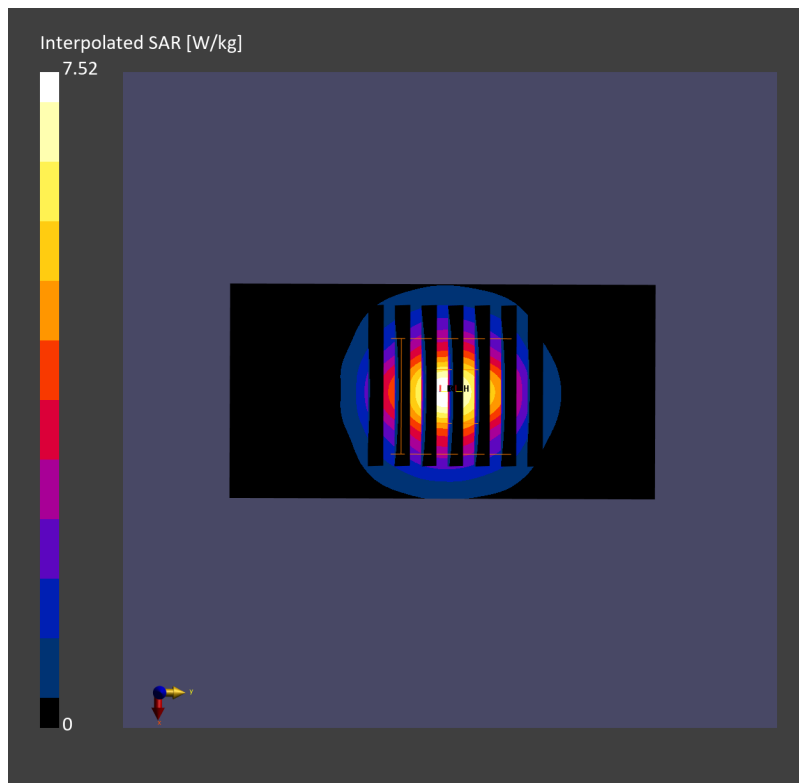
Pin=17dBm/Zoom Scan (28.0 mm x 28.0 mm x 28.0 mm): Measurement Grid: 5.0 mm x 5.0 mm x 1.4 mm

Power Drift = 0.01 dB

SAR (1g) = 2.96 W/kg; SAR (8g) = 1.26 W/kg; SAR (10g) = 1.11 W/kg

Smallest distance from peaks to all points 3 dB below = 8.0 mm

Ratio of SAR at M2 to SAR at M1 = 76.6 %



System Check_Head_3700MHz

DUT: D3700V2 - SN1006

Communication System: CW; Frequency: 3700.000 MHz; Duty Cycle: 1:1
Medium: HSL_3700_231017 Medium parameters used: $f=3700.000$ MHz; $\sigma=3.10$ S/m; $\epsilon_r=36.8$
Ambient Temperature: 23.7°C; Liquid Temperature: 22.7°C

DASY6 Configuration:

- Probe: EX3DV4 - SN7700; ConvF(7.25, 7.25, 7.25); Calibrated: 2023-01-24
- Sensor-Surface: 1.4 mm
- Electronics: DAE4 Sn1707; Calibrated: 2022-12-15
- Phantom: Twin-SAM V8.0 (30deg probe tilt); Serial: 2079_For Gap; Section: Flat
- Measurement Software: 16.2.4.2524
- UID: CW

Pin=17dBm/Area Scan (40.0 mm x 80.0 mm): Measurement Grid: 10.0 mm x 10.0 mm
SAR (1g) = 2.89 W/kg; SAR (10g) = 1.06 W/kg;

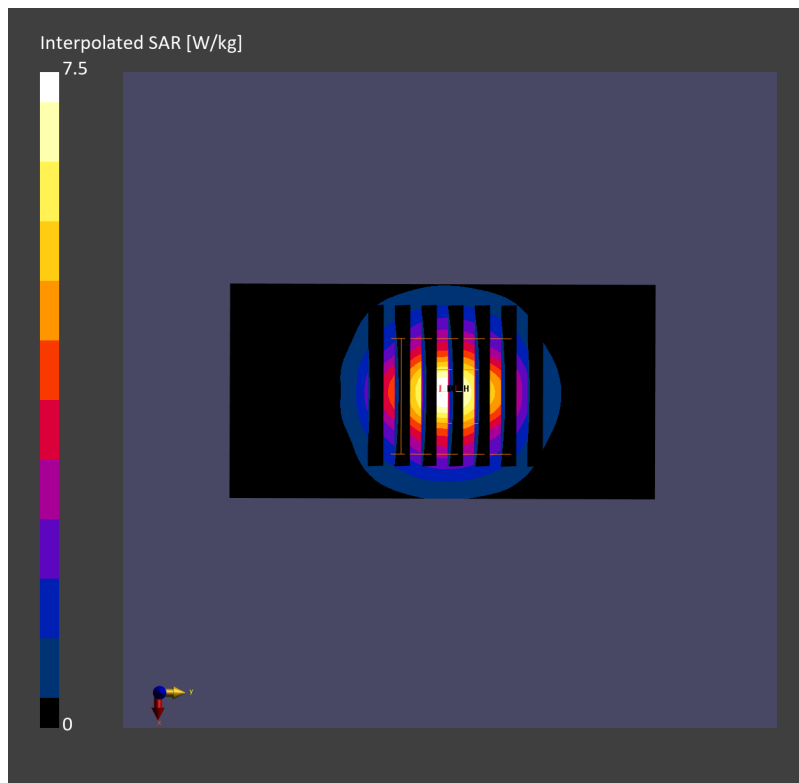
Pin=17dBm/Zoom Scan (28.0 mm x 28.0 mm x 28.0 mm): Measurement Grid: 5.0 mm x 5.0 mm x 1.4 mm

Power Drift = -0.00 dB

SAR (1g) = 2.97 W/kg; SAR (8g) = 1.26 W/kg; SAR (10g) = 1.11 W/kg

Smallest distance from peaks to all points 3 dB below = 8.0 mm

Ratio of SAR at M2 to SAR at M1 = 77.0 %



System Check_Head_3900MHz

DUT: D3900V2 - SN1092

Communication System: CW; Frequency: 3900.000 MHz; Duty Cycle: 1:1

Medium: HSL_3900_231016 Medium parameters used: $f=3900.000$ MHz; $\sigma=3.31$ S/m; $\epsilon_r=36.6$

Ambient Temperature: 23.5°C; Liquid Temperature: 22.5°C

DASY6 Configuration:

- Probe: EX3DV4 - SN7700; ConvF(6.67, 6.67, 6.67); Calibrated: 2023-01-24
- Sensor-Surface: 1.4 mm
- Electronics: DAE4 Sn1707; Calibrated: 2022-12-15
- Phantom: Twin-SAM V8.0 (30deg probe tilt); Serial: 2079_For Gap; Section: Flat
- Measurement Software: 16.2.4.2524
- UID: CW

Pin=17dBm/Area Scan (40.0 mm x 80.0 mm): Measurement Grid: 10.0 mm x 10.0 mm
SAR (1g) = 3.12 W/kg; SAR (10g) = 1.09 W/kg;

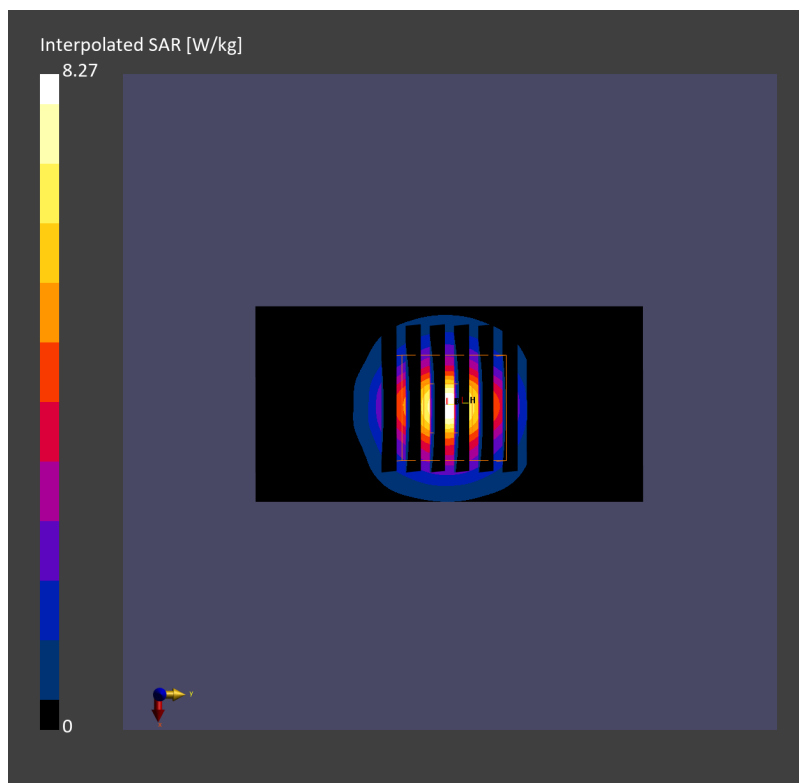
Pin=17dBm/Zoom Scan (28.0 mm x 28.0 mm x 28.0 mm): Measurement Grid: 5.0 mm x 5.0 mm x 1.4 mm

Power Drift = 0.03 dB

SAR (1g) = 3.22 W/kg; SAR (8g) = 1.31 W/kg; SAR (10g) = 1.15 W/kg

Smallest distance from peaks to all points 3 dB below = 8.0 mm

Ratio of SAR at M2 to SAR at M1 = 77.8 %



System Check_Head_3900MHz

DUT: D3900V2 - SN1092

Communication System: CW; Frequency: 3900.000 MHz; Duty Cycle: 1:1
Medium: HSL_3900_231017 Medium parameters used: $f=3900.000$ MHz; $\sigma=3.30$ S/m; $\epsilon_r=36.6$
Ambient Temperature: 23.7°C; Liquid Temperature: 22.7°C

DASY6 Configuration:

- Probe: EX3DV4 - SN7700; ConvF(6.67, 6.67, 6.67); Calibrated: 2023-01-24
- Sensor-Surface: 1.4 mm
- Electronics: DAE4 Sn1707; Calibrated: 2022-12-15
- Phantom: Twin-SAM V8.0 (30deg probe tilt); Serial: 2079_For Gap; Section: Flat
- Measurement Software: 16.2.4.2524
- UID: CW

Pin=17dBm/Area Scan (40.0 mm x 80.0 mm): Measurement Grid: 10.0 mm x 10.0 mm
SAR (1g) = 3.34 W/kg; SAR (10g) = 1.15 W/kg;

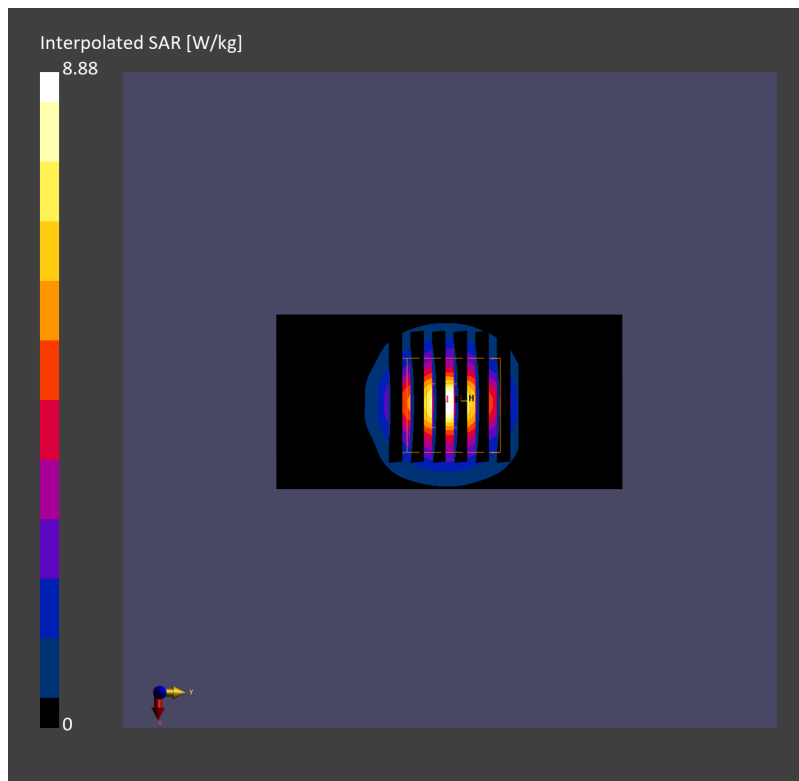
Pin=17dBm/Zoom Scan (28.0 mm x 28.0 mm x 28.0 mm): Measurement Grid: 5.0 mm x 5.0 mm x 1.4 mm

Power Drift = 0.04 dB

SAR (1g) = 3.44 W/kg; SAR (8g) = 1.39 W/kg; SAR (10g) = 1.22 W/kg

Smallest distance from peaks to all points 3 dB below = 7.7 mm

Ratio of SAR at M2 to SAR at M1 = 77.4 %



**Measurement Report for Device
Device Under Test Properties**

Model, Manufacturer	Dimensions [mm]	IMEI	DUT Type
Device,	70.0 x 50.0 x 8.0		5G Verification Source

Exposure Conditions

Phantom Section	Position, Test Distance [mm]	Frequency [MHz]	Conversion Factor
5G	FRONT, 10.00	10000.0	1.0

Hardware Setup

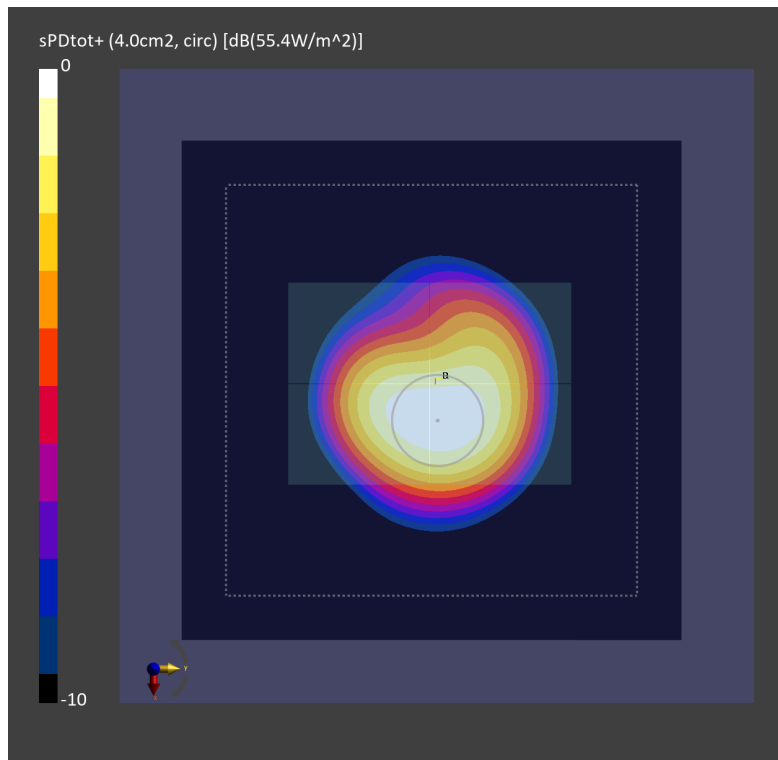
Phantom	Medium	Probe, Calibration Date	DAE, Calibration Date
mmWave - xxxx	Air -	EUmmWV4 - SN9441_F1-55GHz, 2022-11-18	DAE4 Sn1424, 2023-01-09

Scans Setup

Scan Type	5G Scan
Grid Extents [mm]	120.0 x 120.0
Grid Steps [lambda]	0.125 x 0.125
Sensor Surface [mm]	10.0

Measurement Results

Date	2023-10-27
Avg. Area [cm ²]	4.00
psPDn+ [W/m ²]	48.9
psPDtot+ [W/m ²]	55.4
H _{max} [A/m]	0.429
E _{max} [V/m]	165
max _(Stot) [W/m ²]	65.7
Power Drift [dB]	0.03



Measurement Report for Device

Device Under Test Properties

Model, Manufacturer	Dimensions [mm]	IMEI	DUT Type
Device,	70.0 x 50.0 x 8.0		5G Verification Source

Exposure Conditions

Phantom Section	Position, Test Distance [mm]	Frequency [MHz]	Conversion Factor
5G	FRONT, 10.00	10000.0	1.0

Hardware Setup

Phantom	Medium	Probe, Calibration Date	DAE, Calibration Date
mmWave - 1044	Air -	EUmmWV3 - SN9424_F1-55GHz, 2023-03-21	DAE4 Sn656, 2023-01-23

Scans Setup

Scan Type	5G Scan
Grid Extents [mm]	120.0 x 120.0
Grid Steps [lambda]	0.125 x 0.125
Sensor Surface [mm]	10.0

Measurement Results

Date	2023-11-14
Avg. Area [cm ²]	4.00
psPDn+ [W/m ²]	51.2
psPDtot+ [W/m ²]	51.3
H _{max} [A/m]	0.420
E _{max} [V/m]	148
max _(Stot) [W/m ²]	60.0
Power Drift [dB]	-0.00

