

System Check_Head_3700MHz

DUT: D3700V2 - SN1006

Communication System: CW; Frequency: 3700.000 MHz; Duty Cycle: 1:1
Medium: HSL_3700_230922 Medium parameters used: $f=3700.000$ MHz; $\sigma=3.13$ S/m; $\epsilon_r=38.2$
Ambient Temperature: 23.5°C; Liquid Temperature: 22.5°C

DASY6 Configuration:

- Probe: EX3DV4 - SN7700; ConvF(7.25, 7.25, 7.25); Calibrated: 2023-01-24
- Sensor-Surface: 1.4 mm
- Electronics: DAE4 Sn1707; Calibrated: 2022-12-15
- Phantom: Twin-SAM V8.0 (30deg probe tilt); Serial: 2079; Section: Flat
- Measurement Software: 16.2.4.2524
- UID: CW

Pin=17dBm/Area Scan (40.0 mm x 80.0 mm): Measurement Grid: 10.0 mm x 10.0 mm
SAR (1g) = 3.24 W/kg; SAR (10g) = 1.21 W/kg;

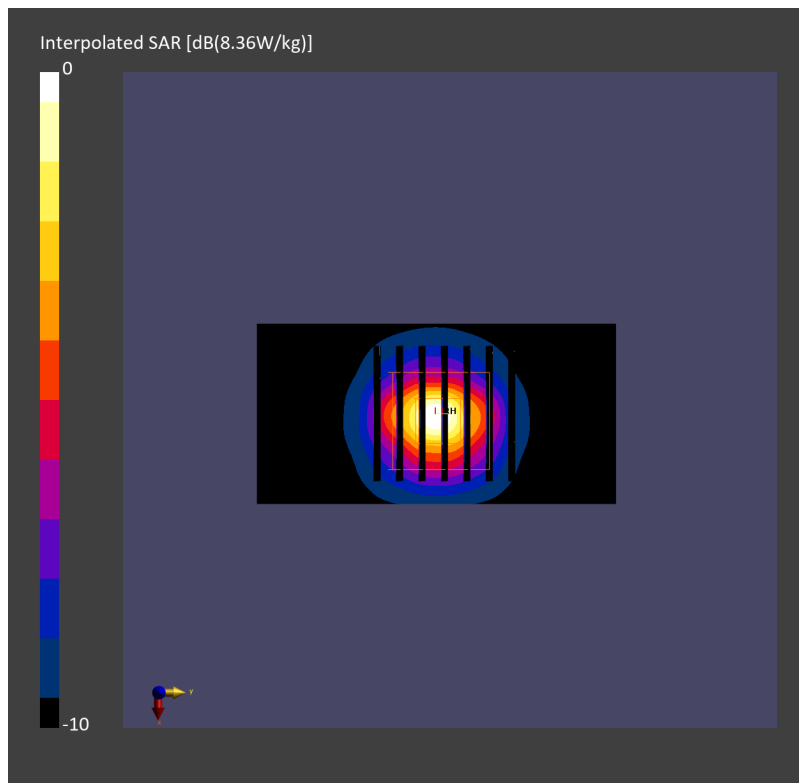
Pin=17dBm/Zoom Scan (28.0 mm x 28.0 mm x 28.0 mm): Measurement Grid: 5.0 mm x 5.0 mm x 1.4 mm

Power Drift = -0.12 dB

SAR (1g) = 3.25 W/kg; SAR (8g) = 1.38 W/kg; SAR (10g) = 1.22 W/kg

Smallest distance from peaks to all points 3 dB below = 8.3 mm

Ratio of SAR at M2 to SAR at M1 = 76.3 %



System Check_Head_3700MHz

DUT: D3700V2 - SN1006

Communication System: CW; Frequency: 3700.000 MHz; Duty Cycle: 1:1
Medium: HSL_3700_230929 Medium parameters used: $f=3700.000$ MHz; $\sigma=3.08$ S/m; $\epsilon_r=37.4$
Ambient Temperature: 23.6°C; Liquid Temperature: 22.6°C

DASY8 Configuration:

- Probe: EX3DV4 - SN3931; ConvF(7.06, 7.06, 7.06); Calibrated: 2022-10-31
- Sensor-Surface: 1.4 mm
- Electronics: DAE4 Sn1696; Calibrated: 2022-11-09
- Phantom: Twin-SAM V8.0 (30deg probe tilt); Serial: 2079_Gap; Section: Flat
- Measurement Software: 16.2.4.2524
- UID: CW, 0--

Pin=17.0dBm/Area Scan (40.0 mm x 80.0 mm): Measurement Grid: 10.0 mm x 10.0 mm
SAR (1g) = 2.84 W/kg; SAR (10g) = 1.07 W/kg;

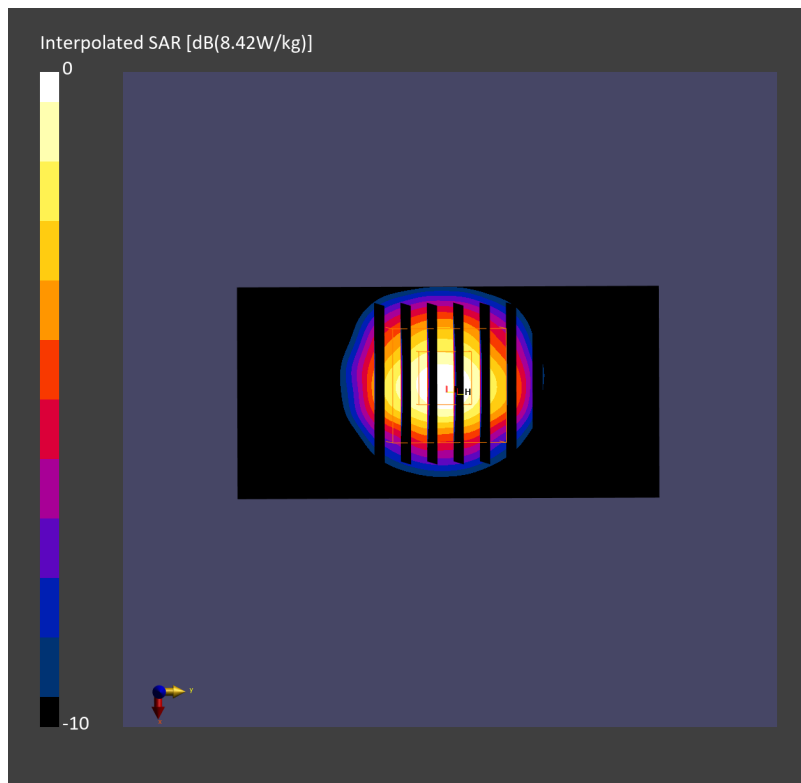
Pin=17.0dBm/Zoom Scan (28.0 mm x 28.0 mm x 28.0 mm): Measurement Grid: 5.0 mm x 5.0 mm x 1.4 mm

Power Drift = -0.06 dB

SAR (1g) = 3.06 W/kg; SAR (8g) = 1.30 W/kg; SAR (10g) = 1.15 W/kg

Smallest distance from peaks to all points 3 dB below = 8.0 mm

Ratio of SAR at M2 to SAR at M1 = 72.6 %



System Check_Head_3700MHz

DUT: D3700V2 - SN1006

Communication System: CW; Frequency: 3700.000 MHz; Duty Cycle: 1:1

Medium: HSL_3700_231003 Medium parameters used: $f = 3700.000$ MHz; $\sigma = 3.11$ S/m; $\epsilon_r = 37.7$

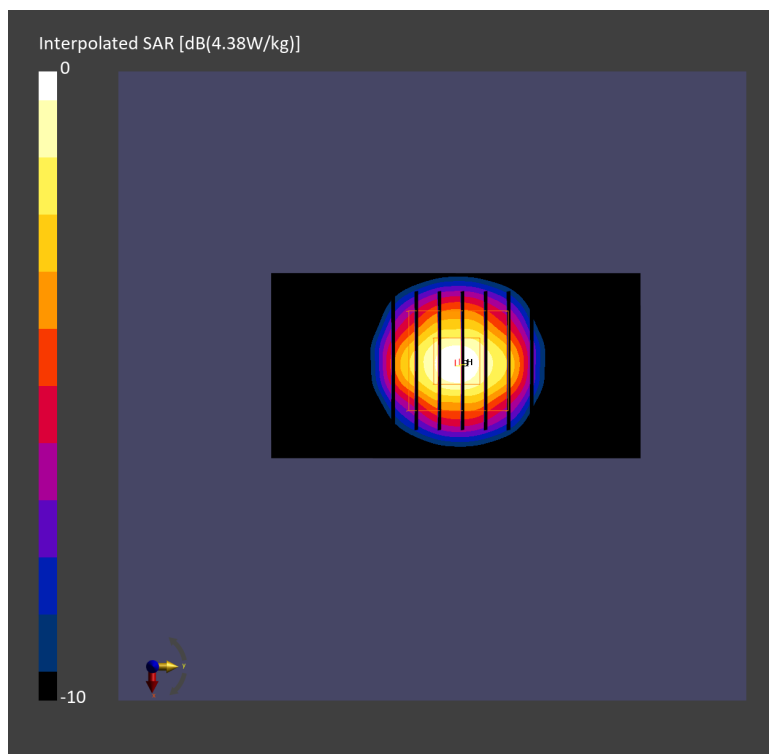
Ambient Temperature: 23.7°C; Liquid Temperature: 22.7°C

DASY8 Configuration:

- Probe: EX3DV4 - SN7692; ConvF(7.11, 6.91, 8.06); Calibrated: 2023-07-18
- Sensor-Surface: 1.4 mm
- Electronics: DAE4 Sn661; Calibrated: 2023-05-23
- Phantom: Twin-SAM V8.0 (30deg probe tilt); Serial: 2079; Section: Flat
- Measurement Software: 16.2.4.2524
- UID: CW

Pin=17dBm/Area Scan (40.0 mm x 80.0 mm): Measurement Grid: 10.0 mm x 10.0 mm
SAR (1g) = 3.01 W/kg; SAR (10g) = 1.11 W/kg;

Pin=17dBm/Zoom Scan (28.0 mm x 28.0 mm x 28.0 mm): Measurement Grid: 5.0 mm x 5.0 mm x 1.4 mm
Power Drift = -0.01 dB
SAR (1g) = 3.08 W/kg; SAR (8g) = 1.33 W/kg; SAR (10g) = 1.17 W/kg
Smallest distance from peaks to all points 3 dB below = 8.3 mm
Ratio of SAR at M2 to SAR at M1 = 76.8 %



System Check_Head_3700MHz

DUT: D3700V2 - SN1006

Communication System: CW; Frequency: 3700.000 MHz; Duty Cycle: 1:1
Medium: HSL_3700_231005 Medium parameters used: $f=3700.000$ MHz; $\sigma=3.11$ S/m; $\epsilon_r=38.0$
Ambient Temperature: 23.5°C; Liquid Temperature: 22.5°C

DASY6 Configuration:

- Probe: EX3DV4 - SN7700; ConvF(7.25, 7.25, 7.25); Calibrated: 2023-01-24
- Sensor-Surface: 1.4 mm
- Electronics: DAE4 Sn1707; Calibrated: 2022-12-15
- Phantom: Twin-SAM V8.0 (30deg probe tilt); Serial: 2079_For Gap; Section: Flat
- Measurement Software: 16.2.4.2524
- UID: CW

Pin=17.0dBm/Area Scan (40.0 mm x 80.0 mm): Measurement Grid: 10.0 mm x 10.0 mm
SAR (1g) = 3.04 W/kg; SAR (10g) = 1.12 W/kg;

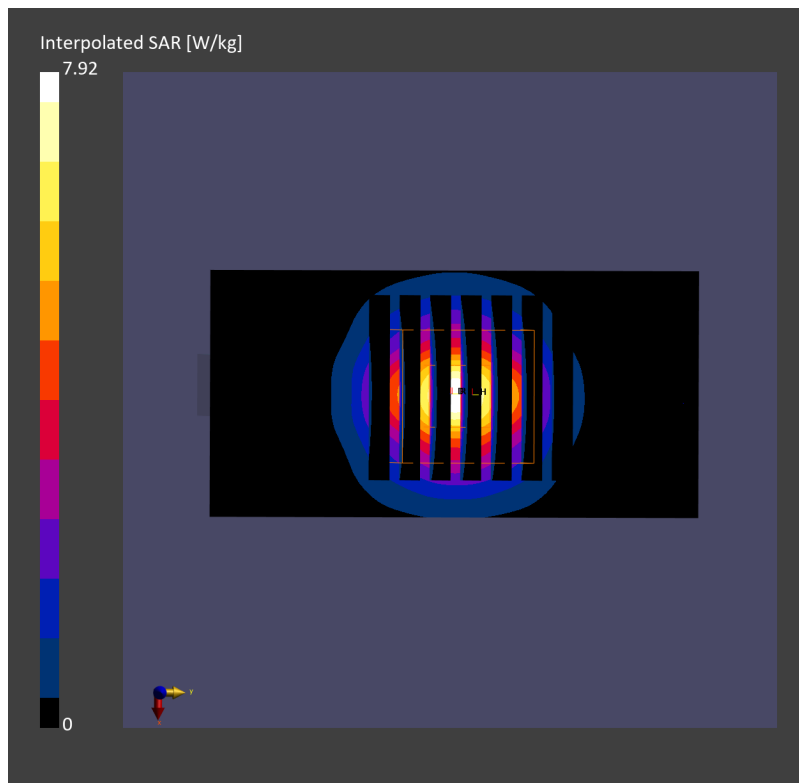
Pin=17.0dBm/Zoom Scan (28.0 mm x 28.0 mm x 28.0 mm): Measurement Grid: 5.0 mm x 5.0 mm x 1.4 mm

Power Drift = -0.00 dB

SAR (1g) = 3.10 W/kg; SAR (8g) = 1.32 W/kg; SAR (10g) = 1.16 W/kg

Smallest distance from peaks to all points 3 dB below = 8.0 mm

Ratio of SAR at M2 to SAR at M1 = 76.5 %



System Check_Head_3700MHz

DUT: D3700V2 - SN1006

Communication System: CW; Frequency: 3700.000 MHz; Duty Cycle: 1:1

Medium: HSL_3700_231005 Medium parameters used: $f = 3700.000$ MHz; $\sigma = 3.12$ S/m; $\epsilon_r = 37.8$

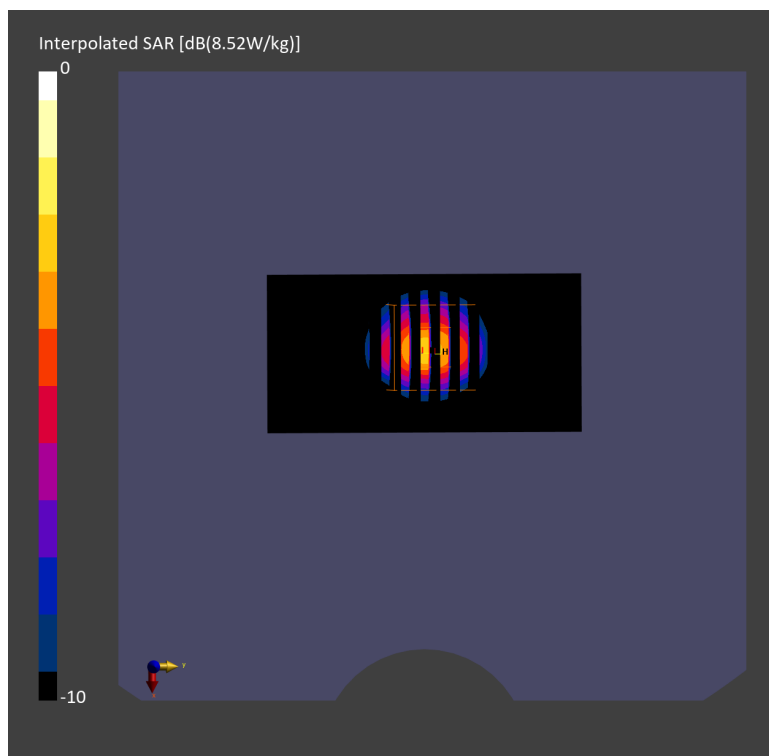
Ambient Temperature: 23.6°C; Liquid Temperature: 22.6°C

DASY8 Configuration:

- Probe: EX3DV4 - SN7692; ConvF(7.11, 6.91, 8.06); Calibrated: 2023-07-18
- Sensor-Surface: 1.4 mm
- Electronics: DAE4 Sn661; Calibrated: 2023-05-23
- Phantom: Twin-SAM V8.0 (30deg probe tilt); Serial: 2079_Gap; Section: Flat
- Measurement Software: 16.2.4.2524
- UID: CW

Pin=17dBm/Area Scan (40.0 mm x 80.0 mm): Measurement Grid: 10.0 mm x 10.0 mm
SAR (1g) = 3.10 W/kg; SAR (10g) = 1.14 W/kg;

Pin=17dBm/Zoom Scan (28.0 mm x 28.0 mm x 28.0 mm): Measurement Grid: 5.0 mm x 5.0 mm x 1.4 mm
Power Drift = -0.03 dB
SAR (1g) = 3.24 W/kg; SAR (8g) = 1.35 W/kg; SAR (10g) = 1.19 W/kg
Smallest distance from peaks to all points 3 dB below = 8.0 mm
Ratio of SAR at M2 to SAR at M1 = 75.2 %



System Check_Head_3700MHz

DUT: D3700V2 - SN1006

Communication System: CW; Frequency: 3700.000 MHz; Duty Cycle: 1:1
Medium: HSL_3700_231007 Medium parameters used: $f=3700.000$ MHz; $\sigma=3.14$ S/m; $\epsilon_r=37.1$
Ambient Temperature: 23.7°C; Liquid Temperature: 22.7°C

DASY6 Configuration:

- Probe: EX3DV4 - SN7700; ConvF(7.25, 7.25, 7.25); Calibrated: 2023-01-24
- Sensor-Surface: 1.4 mm
- Electronics: DAE4 Sn1707; Calibrated: 2022-12-15
- Phantom: Twin-SAM V8.0 (30deg probe tilt); Serial: 2079_For Gap; Section: Flat
- Measurement Software: 16.2.4.2524
- UID: CW

Pin=17.0dBm/Area Scan (40.0 mm x 80.0 mm): Measurement Grid: 10.0 mm x 10.0 mm
SAR (1g) = 3.10 W/kg; SAR (10g) = 1.15 W/kg;

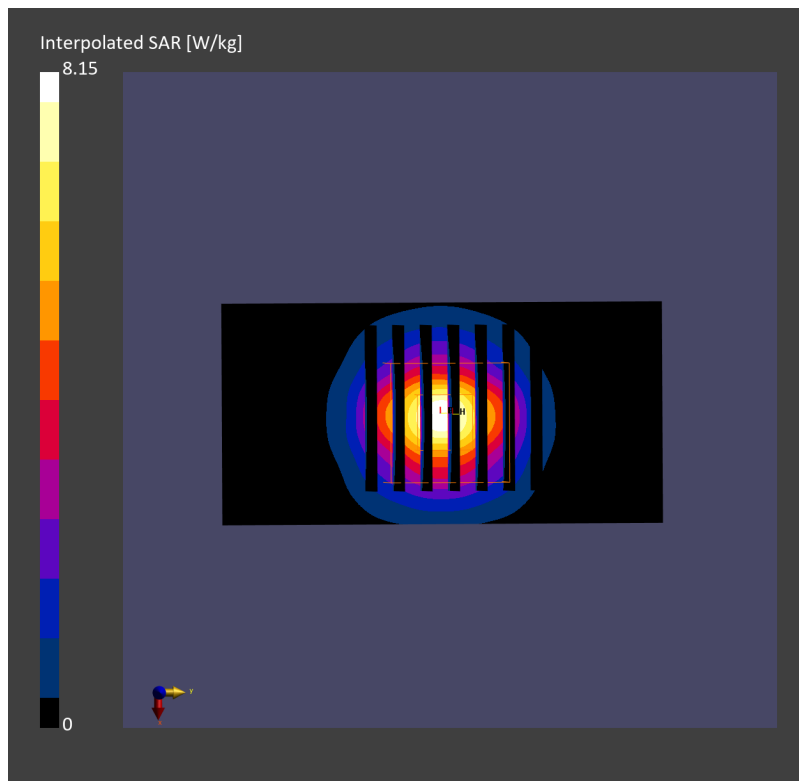
Pin=17.0dBm/Zoom Scan (28.0 mm x 28.0 mm x 28.0 mm): Measurement Grid: 5.0 mm x 5.0 mm x 1.4 mm

Power Drift = -0.00 dB

SAR (1g) = 3.20 W/kg; SAR (8g) = 1.36 W/kg; SAR (10g) = 1.20 W/kg

Smallest distance from peaks to all points 3 dB below = 8.6 mm

Ratio of SAR at M2 to SAR at M1 = 76.7 %



System Check_Head_3700MHz

DUT: D3700V2 - SN1006

Communication System: CW; Frequency: 3700.000 MHz; Duty Cycle: 1:1
Medium: HSL_3700_231008 Medium parameters used: $f=3700.000$ MHz; $\sigma=3.12$ S/m; $\epsilon_r=37.0$
Ambient Temperature: 23.8°C; Liquid Temperature: 22.8°C

DASY6 Configuration:

- Probe: EX3DV4 - SN7700; ConvF(7.25, 7.25, 7.25); Calibrated: 2023-01-24
- Sensor-Surface: 1.4 mm
- Electronics: DAE4 Sn1707; Calibrated: 2022-12-15
- Phantom: Twin-SAM V8.0 (30deg probe tilt); Serial: 2079; Section: Flat
- Measurement Software: 16.2.4.2524
- UID: CW

Pin=17.0dBm/Area Scan (40.0 mm x 80.0 mm): Measurement Grid: 10.0 mm x 10.0 mm
SAR (1g) = 3.07 W/kg; SAR (10g) = 1.14 W/kg;

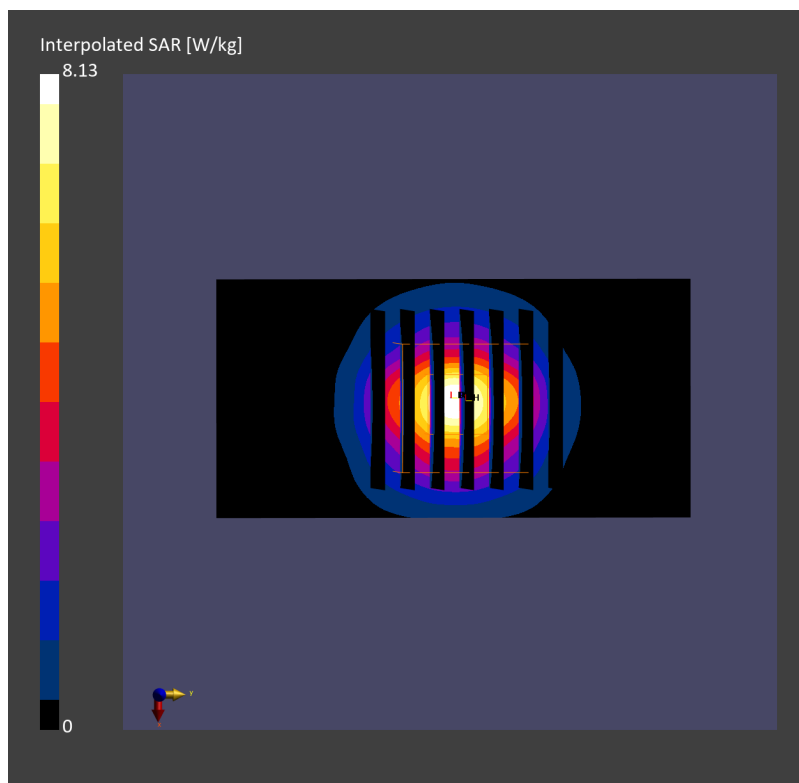
Pin=17.0dBm/Zoom Scan (28.0 mm x 28.0 mm x 28.0 mm): Measurement Grid: 5.0 mm x 5.0 mm x 1.4 mm

Power Drift = 0.00 dB

SAR (1g) = 3.16 W/kg; SAR (8g) = 1.35 W/kg; SAR (10g) = 1.19 W/kg

Smallest distance from peaks to all points 3 dB below = 8.3 mm

Ratio of SAR at M2 to SAR at M1 = 75.8 %



System Check_Head_3700MHz

DUT: D3700V2 - SN1006

Communication System: CW; Frequency: 3700.000 MHz; Duty Cycle: 1:1

Medium: HSL_3700_231012 Medium parameters used: $f = 3700.000$ MHz; $\sigma = 3.16$ S/m; $\epsilon_r = 37.9$

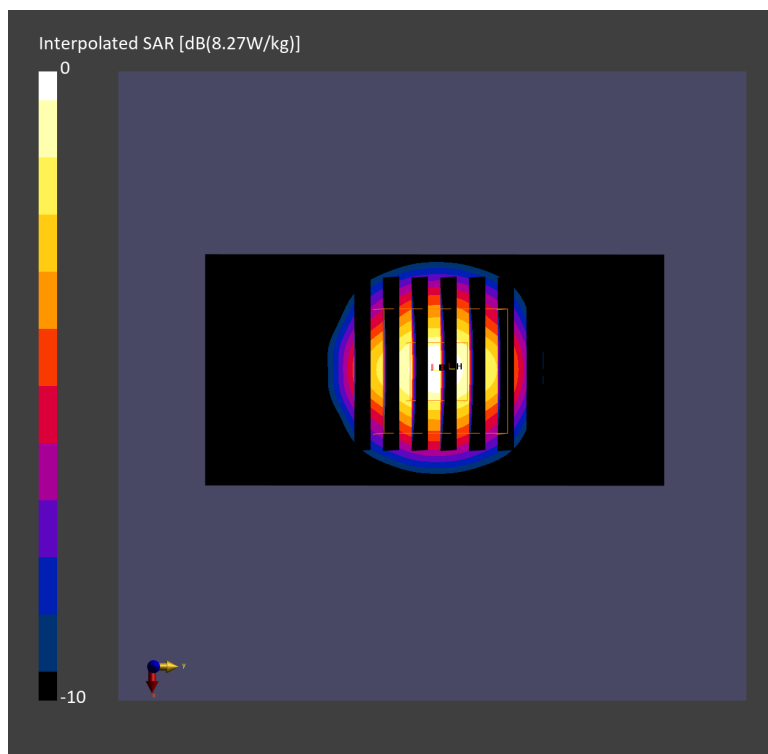
Ambient Temperature: 23.7°C; Liquid Temperature: 22.7°C

DASY8 Configuration:

- Probe: EX3DV4 - SN7692; ConvF(7.11, 6.91, 8.06); Calibrated: 2023-07-18
- Sensor-Surface: 1.4 mm
- Electronics: DAE4 Sn661; Calibrated: 2023-05-23
- Phantom: Twin-SAM V8.0 (30deg probe tilt); Serial: 2079; Section: Flat
- Measurement Software: 16.2.4.2524
- UID: CW, 0--

Pin=17.0dBm/Area Scan (40.0 mm x 80.0 mm): Measurement Grid: 10.0 mm x 10.0 mm
SAR (1g) = 3.25 W/kg; SAR (10g) = 1.20 W/kg;

Pin=17.0dBm/Zoom Scan (28.0 mm x 28.0 mm x 28.0 mm): Measurement Grid: 5.0 mm x 5.0 mm x 1.4 mm
Power Drift = 0.01 dB
SAR (1g) = 3.26 W/kg; SAR (8g) = 1.41 W/kg; SAR (10g) = 1.24 W/kg
Smallest distance from peaks to all points 3 dB below = 8.3 mm
Ratio of SAR at M2 to SAR at M1 = 75.9 %



System Check_Head_3700MHz

DUT: D3700V2 - SN1006

Communication System: CW; Frequency: 3700.000 MHz; Duty Cycle: 1:1

Medium: HSL_3700_231031 Medium parameters used: $f=3700.000$ MHz; $\sigma=3.08$ S/m; $\epsilon_r=37.4$

Ambient Temperature: 23.3°C; Liquid Temperature: 22.3°C

DASY8 Configuration:

- Probe: EX3DV4 - SN7692; ConvF(7.11, 6.91, 8.06); Calibrated: 2023-07-18
- Sensor-Surface: 1.4 mm
- Electronics: DAE4 Sn661; Calibrated: 2023-05-23
- Phantom: Twin-SAM V8.0 (30deg probe tilt); Serial: 2079_Gap; Section: Flat
- Measurement Software: 16.2.4.2524
- UID: CW

Pin=17dBm/Area Scan (40.0 mm x 80.0 mm): Measurement Grid: 10.0 mm x 10.0 mm

SAR (1g) = 3.10 W/kg; SAR (10g) = 1.14 W/kg;

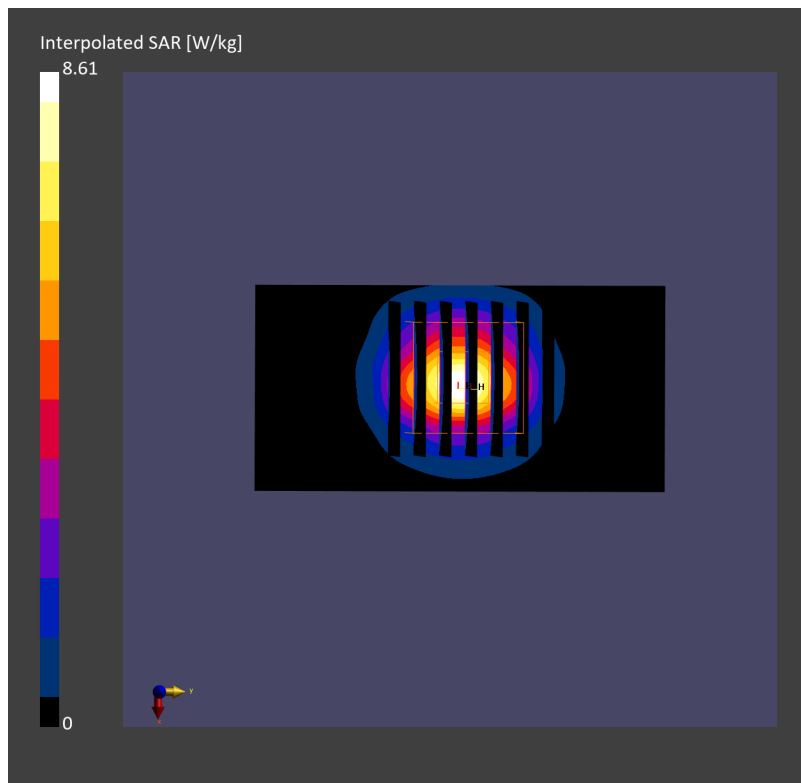
Pin=17dBm/Zoom Scan (28.0 mm x 28.0 mm x 28.0 mm): Measurement Grid: 5.0 mm x 5.0 mm x 1.4 mm

Power Drift = -0.02 dB

SAR (1g) = 3.26 W/kg; SAR (8g) = 1.36 W/kg; SAR (10g) = 1.19 W/kg

Smallest distance from peaks to all points 3 dB below = 8.0 mm

Ratio of SAR at M2 to SAR at M1 = 75.0 %



System Check_Head_3700MHz

DUT: D3700V2 - SN1006

Communication System: CW; Frequency: 3700.000 MHz; Duty Cycle: 1:1
Medium: HSL_3700_231101 Medium parameters used: $f=3700.000$ MHz; $\sigma=3.14$ S/m; $\epsilon_r=38.0$
Ambient Temperature: 23.2°C; Liquid Temperature: 22.2°C

DASY8 Configuration:

- Probe: EX3DV4 - SN7692; ConvF(7.11, 6.91, 8.06); Calibrated: 2023-07-18
- Sensor-Surface: 1.4 mm
- Electronics: DAE4 Sn661; Calibrated: 2023-05-23
- Phantom: Twin-SAM V8.0 (30deg probe tilt); Serial: 2079_Gap; Section: Flat
- Measurement Software: 16.2.4.2524
- UID: CW

Pin=17dBm/Area Scan (40.0 mm x 80.0 mm): Measurement Grid: 10.0 mm x 10.0 mm
SAR (1g) = 3.59 W/kg; SAR (10g) = 1.27 W/kg;

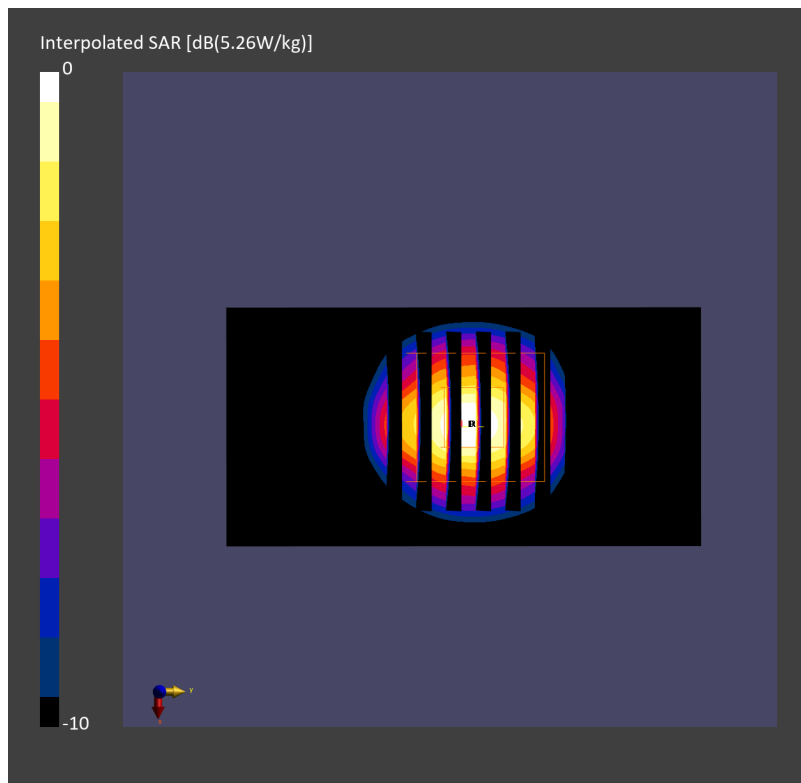
Pin=17dBm/Zoom Scan (28.0 mm x 28.0 mm x 28.0 mm): Measurement Grid: 5.0 mm x 5.0 mm x 1.4 mm

Power Drift = -0.05 dB

SAR (1g) = 3.15 W/kg; SAR (8g) = 1.32 W/kg; SAR (10g) = 1.16 W/kg

Smallest distance from peaks to all points 3 dB below = 8.0 mm

Ratio of SAR at M2 to SAR at M1 = 74.3 %



System Check_Head_3900MHz

DUT: D3900V2 - SN1092

Communication System: CW; Frequency: 3900.000 MHz; Duty Cycle: 1:1
Medium: HSL_3900_230929 Medium parameters used: $f= 3900.000$ MHz; $\sigma= 3.25$ S/m; $\epsilon_r = 37.1$
Ambient Temperature: 23.6°C; Liquid Temperature: 22.6°C

DASY8 Configuration:

- Probe: EX3DV4 - SN3931; ConvF(6.57, 6.57, 6.57); Calibrated: 2022-10-31
- Sensor-Surface: 1.4 mm
- Electronics: DAE4 Sn1696; Calibrated: 2022-11-09
- Phantom: Twin-SAM V8.0 (30deg probe tilt); Serial: 2079_Gap; Section: Flat
- Measurement Software: 16.2.4.2524
- UID: CW, 0--

Pin=17.0dBm/Area Scan (40.0 mm x 80.0 mm): Measurement Grid: 10.0 mm x 10.0 mm
SAR (1g) = 2.85 W/kg; SAR (10g) = 1.01 W/kg;

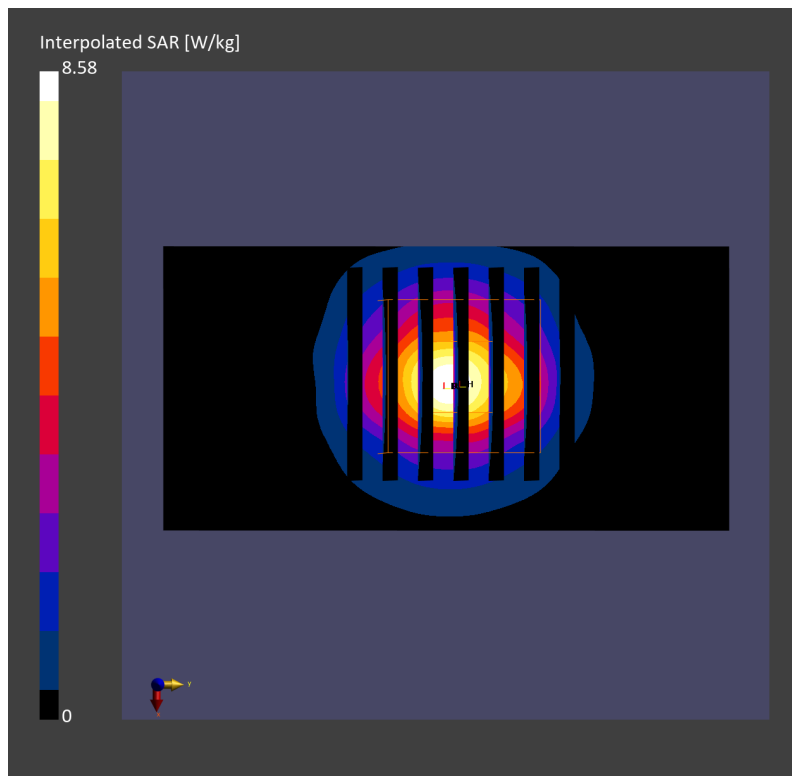
Pin=17.0dBm/Zoom Scan (28.0 mm x 28.0 mm x 28.0 mm): Measurement Grid: 5.0 mm x 5.0 mm x 1.4 mm

Power Drift = -0.08 dB

SAR (1g) = 3.06 W/kg; SAR (8g) = 1.25 W/kg; SAR (10g) = 1.10 W/kg

Smallest distance from peaks to all points 3 dB below = 8.0 mm

Ratio of SAR at M2 to SAR at M1 = 72.9 %



System Check_Head_3900MHz

DUT: D3900V2 - SN1092

Communication System: CW; Frequency: 3900.000 MHz; Duty Cycle: 1:1

Medium: HSL_3900_231001 Medium parameters used: $f = 3900.000$ MHz; $\sigma = 3.25$ S/m; $\epsilon_r = 37.3$

Ambient Temperature: 23.7°C; Liquid Temperature: 22.7°C

DASY8 Configuration:

- Probe: EX3DV4 - SN3931; ConvF(6.57, 6.57, 6.57); Calibrated: 2022-10-31
- Sensor-Surface: 1.4 mm
- Electronics: DAE4 Sn1696; Calibrated: 2022-11-09
- Phantom: Twin-SAM V8.0 (30deg probe tilt); Serial: 2079; Section: Flat
- Measurement Software: 16.2.4.2524
- UID: CW, 0--

Pin=17.0dBm/Area Scan (40.0 mm x 80.0 mm): Measurement Grid: 10.0 mm x 10.0 mm

SAR (1g) = 3.14 W/kg; SAR (10g) = 1.12 W/kg;

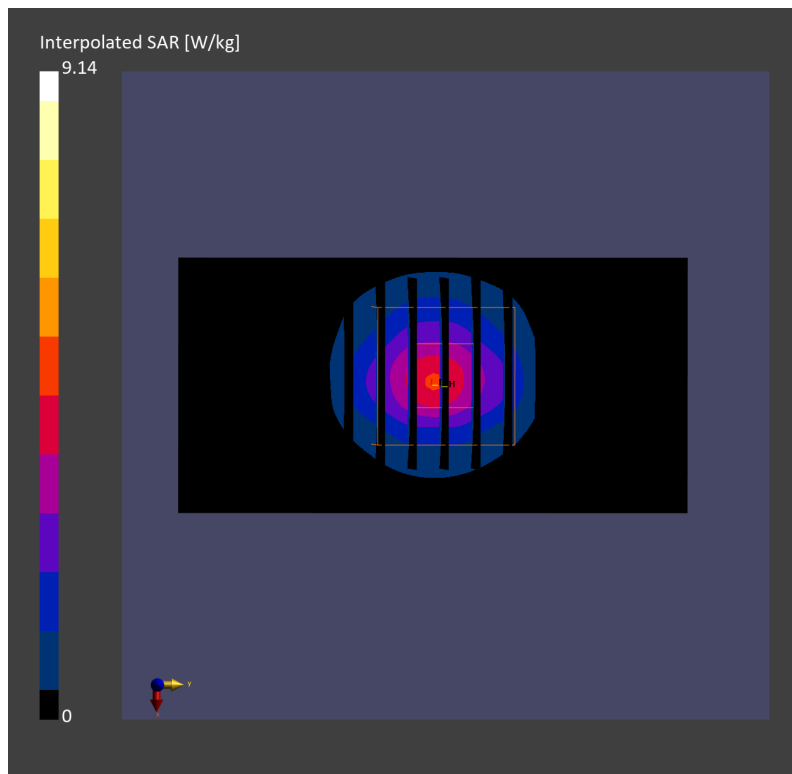
Pin=17.0dBm/Zoom Scan (28.0 mm x 28.0 mm x 28.0 mm): Measurement Grid: 5.0 mm x 5.0 mm x 1.4 mm

Power Drift = 0.02 dB

SAR (1g) = 3.37 W/kg; SAR (8g) = 1.39 W/kg; SAR (10g) = 1.22 W/kg

Smallest distance from peaks to all points 3 dB below = 8.0 mm

Ratio of SAR at M2 to SAR at M1 = 74.0 %



System Check_Head_3900MHz

DUT: D3900V2 - SN1017

Communication System: CW; Frequency: 3900.000 MHz; Duty Cycle: 1:1

Medium: HSL_3900_231003 Medium parameters used: $f = 3900.000$ MHz; $\sigma = 3.28$ S/m; $\epsilon_r = 37.4$

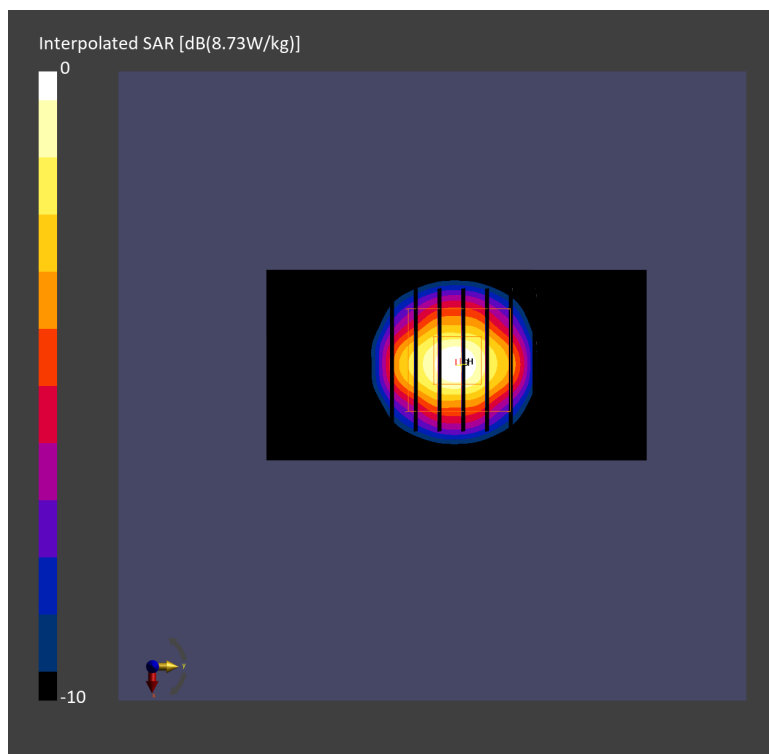
Ambient Temperature: 23.7°C; Liquid Temperature: 22.7°C

DASY8 Configuration:

- Probe: EX3DV4 - SN7692; ConvF(7.06, 6.86, 8.01); Calibrated: 2023-07-18
- Sensor-Surface: 1.4 mm
- Electronics: DAE4 Sn661; Calibrated: 2023-05-23
- Phantom: Twin-SAM V8.0 (30deg probe tilt); Serial: 2079; Section: Flat
- Measurement Software: 16.2.4.2524
- UID: CW

Pin=17dBm/Area Scan (40.0 mm x 80.0 mm): Measurement Grid: 10.0 mm x 10.0 mm
SAR (1g) = 3.18 W/kg; SAR (10g) = 1.10 W/kg;

Pin=17dBm/Zoom Scan (28.0 mm x 28.0 mm x 28.0 mm): Measurement Grid: 5.0 mm x 5.0 mm x 1.4 mm
Power Drift = -0.00 dB
SAR (1g) = 3.31 W/kg; SAR (8g) = 1.35 W/kg; SAR (10g) = 1.19 W/kg
Smallest distance from peaks to all points 3 dB below = 8.0 mm
Ratio of SAR at M2 to SAR at M1 = 75.4 %



System Check_Head_3900MHz

DUT: D3900V2 - SN1017

Communication System: CW; Frequency: 3900.000 MHz; Duty Cycle: 1:1
Medium: HSL_3900_231005 Medium parameters used: $f=3900.000$ MHz; $\sigma=3.29$ S/m; $\epsilon_r=37.6$
Ambient Temperature: 23.6°C; Liquid Temperature: 22.6°C

DASY8 Configuration:

- Probe: EX3DV4 - SN7692; ConvF(7.06, 6.86, 8.01); Calibrated: 2023-07-18
- Sensor-Surface: 1.4 mm
- Electronics: DAE4 Sn661; Calibrated: 2023-05-23
- Phantom: Twin-SAM V8.0 (30deg probe tilt); Serial: 2079_Gap; Section: Flat
- Measurement Software: 16.2.4.2524
- UID: CW

Pin=17dBm/Area Scan (40.0 mm x 80.0 mm): Measurement Grid: 10.0 mm x 10.0 mm
SAR (1g) = 2.93 W/kg; SAR (10g) = 1.06 W/kg;

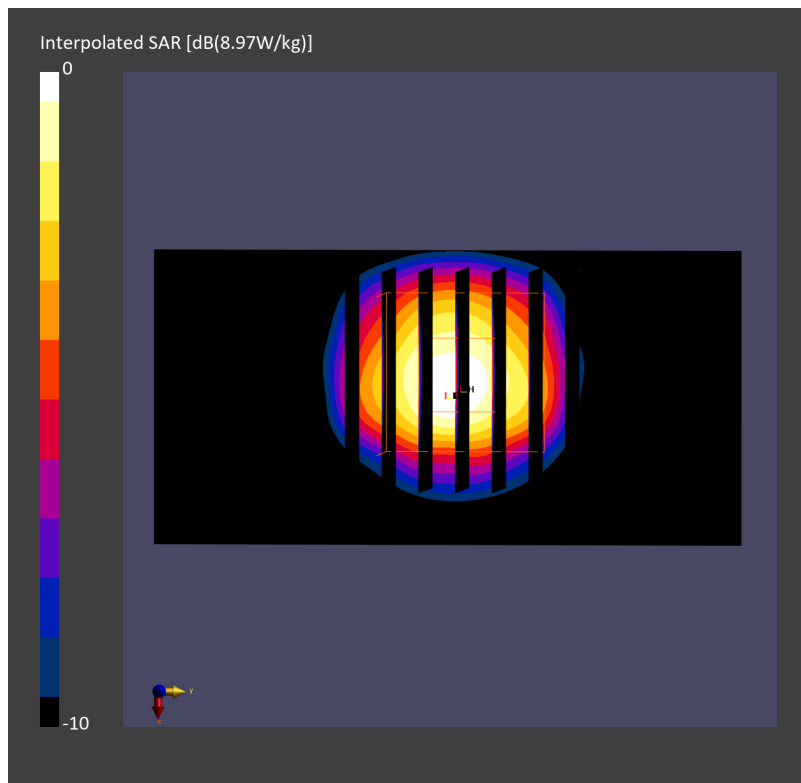
Pin=17dBm/Zoom Scan (28.0 mm x 28.0 mm x 28.0 mm): Measurement Grid: 5.0 mm x 5.0 mm x 1.4 mm

Power Drift = -0.01 dB

SAR (1g) = 3.22 W/kg; SAR (8g) = 1.28 W/kg; SAR (10g) = 1.12 W/kg

Smallest distance from peaks to all points 3 dB below = 8.0 mm

Ratio of SAR at M2 to SAR at M1 = 73.7 %



System Check_Head_3900MHz

DUT: D3900V2 - SN1092

Communication System: CW; Frequency: 3900.000 MHz; Duty Cycle: 1:1
Medium: HSL_3900_231006 Medium parameters used: $f=3900.000$ MHz; $\sigma=3.38$ S/m; $\epsilon_r=37.0$
Ambient Temperature: 23.5°C; Liquid Temperature: 22.5°C

DASY6 Configuration:

- Probe: EX3DV4 - SN7700; ConvF(6.67, 6.67, 6.67); Calibrated: 2023-01-24
- Sensor-Surface: 1.4 mm
- Electronics: DAE4 Sn1707; Calibrated: 2022-12-15
- Phantom: Twin-SAM V8.0 (30deg probe tilt); Serial: 2079_For Gap; Section: Flat
- Measurement Software: 16.2.4.2524
- UID: CW

Pin=17dBm/Area Scan (40.0 mm x 80.0 mm): Measurement Grid: 10.0 mm x 10.0 mm
SAR (1g) = 3.03 W/kg; SAR (10g) = 1.13 W/kg;

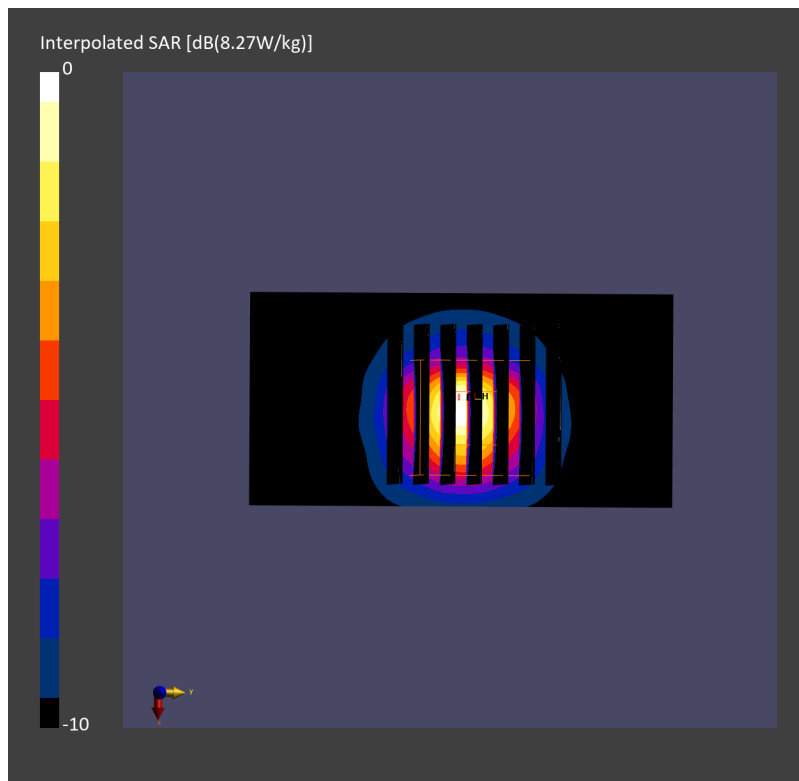
Pin=17dBm/Zoom Scan (28.0 mm x 28.0 mm x 28.0 mm): Measurement Grid: 5.0 mm x 5.0 mm x 1.4 mm

Power Drift = -0.05 dB

SAR (1g) = 3.24 W/kg; SAR (8g) = 1.33 W/kg; SAR (10g) = 1.17 W/kg

Smallest distance from peaks to all points 3 dB below = 8.0 mm

Ratio of SAR at M2 to SAR at M1 = 77.9 %



System Check_Head_3900MHz

DUT: D3900V2 - SN1092

Communication System: CW; Frequency: 3900.000 MHz; Duty Cycle: 1:1
Medium: HSL_3900_231007 Medium parameters used: $f=3900.000$ MHz; $\sigma=3.34$ S/m; $\epsilon_r=36.9$
Ambient Temperature: 23.7°C; Liquid Temperature: 22.7°C

DASY6 Configuration:

- Probe: EX3DV4 - SN7700; ConvF(6.67, 6.67, 6.67); Calibrated: 2023-01-24
- Sensor-Surface: 1.4 mm
- Electronics: DAE4 Sn1707; Calibrated: 2022-12-15
- Phantom: Twin-SAM V8.0 (30deg probe tilt); Serial: 2079_For Gap; Section: Flat
- Measurement Software: 16.2.4.2524
- UID: CW

Pin=17.0dBm/Area Scan (40.0 mm x 80.0 mm): Measurement Grid: 10.0 mm x 10.0 mm
SAR (1g) = 2.95 W/kg; SAR (10g) = 1.07 W/kg;

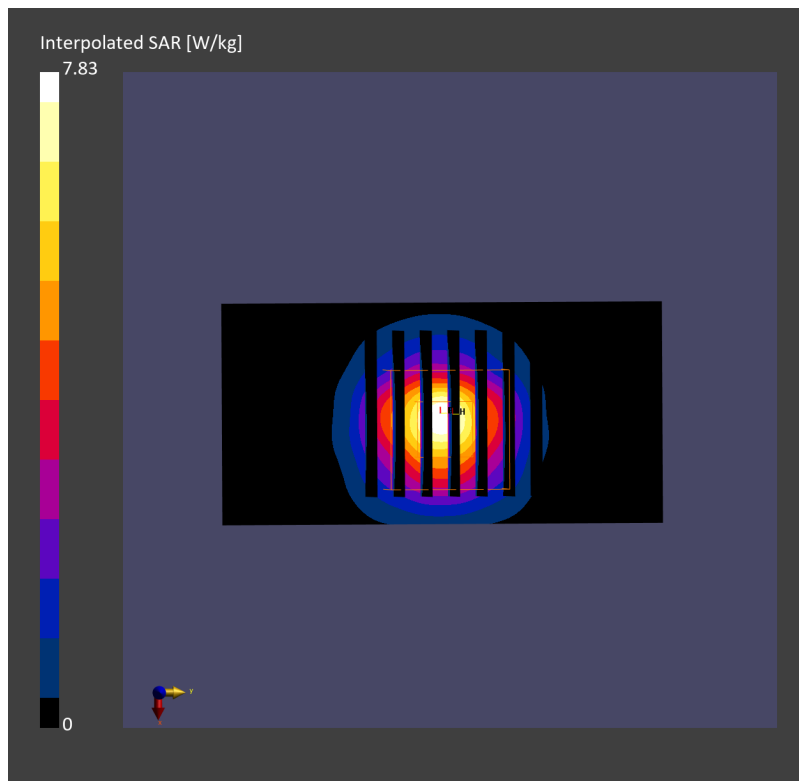
Pin=17.0dBm/Zoom Scan (28.0 mm x 28.0 mm x 28.0 mm): Measurement Grid: 5.0 mm x 5.0 mm x 1.4 mm

Power Drift = -0.00 dB

SAR (1g) = 3.08 W/kg; SAR (8g) = 1.26 W/kg; SAR (10g) = 1.11 W/kg

Smallest distance from peaks to all points 3 dB below = 8.0 mm

Ratio of SAR at M2 to SAR at M1 = 78.5 %



System Check_Head_3900MHz

DUT: D3900V2 - SN1092

Communication System: CW; Frequency: 3900.000 MHz; Duty Cycle: 1:1
Medium: HSL_3900_231007 Medium parameters used: $f=3900.000$ MHz; $\sigma=3.28$ S/m; $\epsilon_r=37.3$
Ambient Temperature: 23.7°C; Liquid Temperature: 22.7°C

DASY8 Configuration:

- Probe: EX3DV4 - SN7692; ConvF(7.06, 6.86, 8.01); Calibrated: 2023-07-18
- Sensor-Surface: 1.4 mm
- Electronics: DAE4 Sn661; Calibrated: 2023-05-23
- Phantom: Twin-SAM V8.0 (30deg probe tilt); Serial: 2079; Section: Flat
- Measurement Software: 16.2.4.2524
- UID: CW

Pin=17dBm/Area Scan (40.0 mm x 80.0 mm): Measurement Grid: 10.0 mm x 10.0 mm
SAR (1g) = 3.12 W/kg; SAR (10g) = 1.08 W/kg;

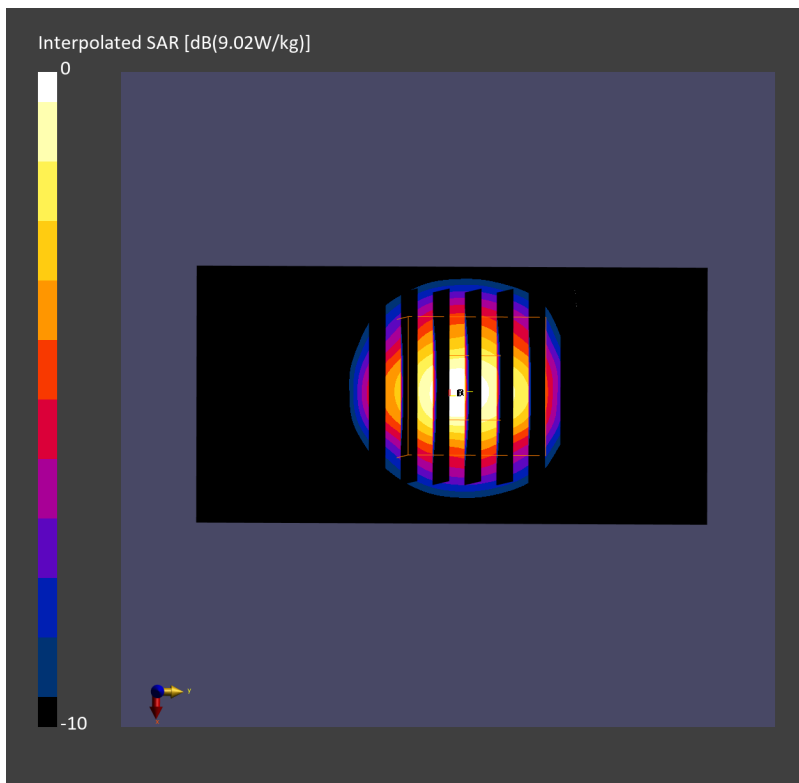
Pin=17dBm/Zoom Scan (28.0 mm x 28.0 mm x 28.0 mm): Measurement Grid: 5.0 mm x 5.0 mm x 1.4 mm

Power Drift = 0.00 dB

SAR (1g) = 3.36 W/kg; SAR (8g) = 1.37 W/kg; SAR (10g) = 1.20 W/kg

Smallest distance from peaks to all points 3 dB below = 8.0 mm

Ratio of SAR at M2 to SAR at M1 = 74.8 %



System Check_Head_3900MHz

DUT: D3900V2 - SN1092

Communication System: CW; Frequency: 3900.000 MHz; Duty Cycle: 1:1
Medium: HSL_3900_231008 Medium parameters used: $f=3900.000$ MHz; $\sigma=3.32$ S/m; $\epsilon_r=36.7$
Ambient Temperature: 23.8°C; Liquid Temperature: 22.8°C

DASY6 Configuration:

- Probe: EX3DV4 - SN7700; ConvF(6.67, 6.67, 6.67); Calibrated: 2023-01-24
- Sensor-Surface: 1.4 mm
- Electronics: DAE4 Sn1707; Calibrated: 2022-12-15
- Phantom: Twin-SAM V8.0 (30deg probe tilt); Serial: 2079; Section: Flat
- Measurement Software: 16.2.4.2524
- UID: CW

Pin=17.0dBm/Area Scan (40.0 mm x 80.0 mm): Measurement Grid: 10.0 mm x 10.0 mm
SAR (1g) = 2.92 W/kg; SAR (10g) = 1.04 W/kg;

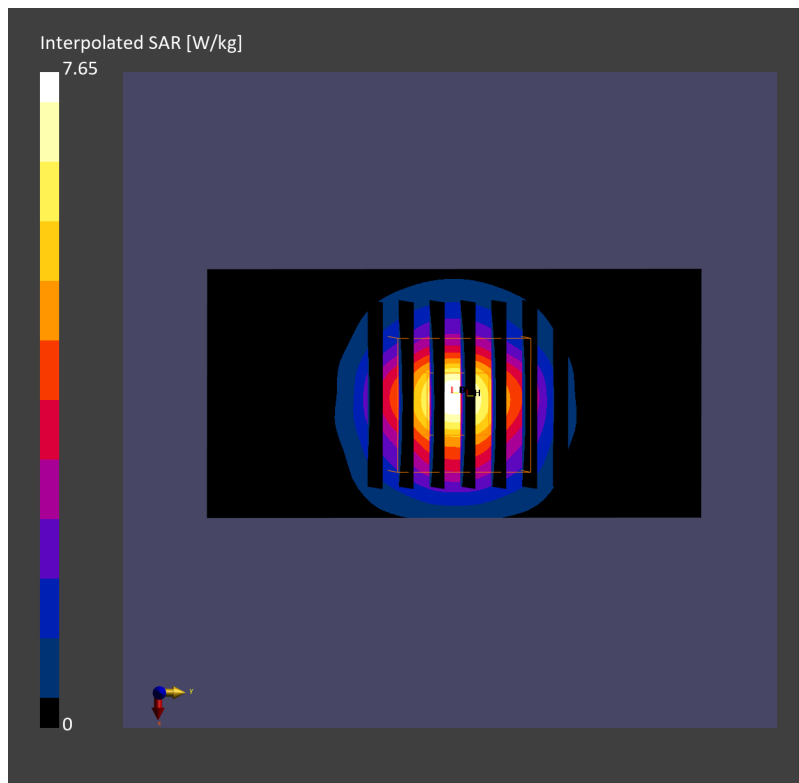
Pin=17.0dBm/Zoom Scan (28.0 mm x 28.0 mm x 28.0 mm): Measurement Grid: 5.0 mm x 5.0 mm x 1.4 mm

Power Drift = -0.01 dB

SAR (1g) = 3.02 W/kg; SAR (8g) = 1.24 W/kg; SAR (10g) = 1.09 W/kg

Smallest distance from peaks to all points 3 dB below = 8.0 mm

Ratio of SAR at M2 to SAR at M1 = 77.9 %



System Check_Head_3900MHz

DUT: D3900V2 - SN1092

Communication System: CW; Frequency: 3900.000 MHz; Duty Cycle: 1:1
Medium: HSL_3900_231031 Medium parameters used: $f=3900.000$ MHz; $\sigma=3.25$ S/m; $\epsilon_r=37.1$
Ambient Temperature: 23.3°C; Liquid Temperature: 22.3°C

DASY8 Configuration:

- Probe: EX3DV4 - SN7692; ConvF(7.06, 6.86, 8.01); Calibrated: 2023-07-18
- Sensor-Surface: 1.4 mm
- Electronics: DAE4 Sn661; Calibrated: 2023-05-23
- Phantom: Twin-SAM V8.0 (30deg probe tilt); Serial: 2079_Gap; Section: Flat
- Measurement Software: 16.2.4.2524
- UID: CW

Pin=17dBm/Area Scan (40.0 mm x 80.0 mm): Measurement Grid: 10.0 mm x 10.0 mm
SAR (1g) = 3.26 W/kg; SAR (10g) = 1.15 W/kg;

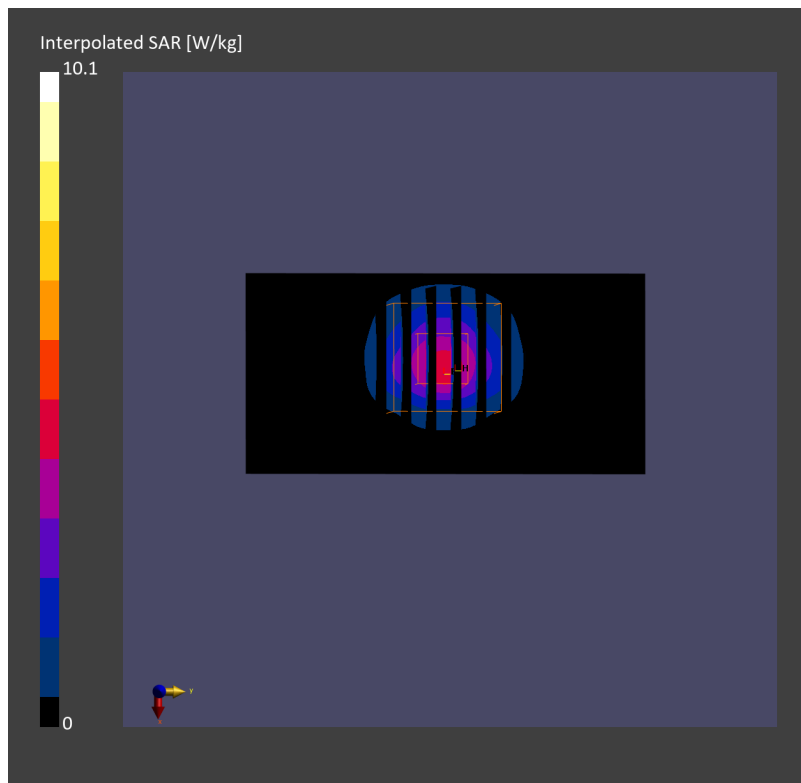
Pin=17dBm/Zoom Scan (28.0 mm x 28.0 mm x 28.0 mm): Measurement Grid: 5.0 mm x 5.0 mm x 1.4 mm

Power Drift = -0.04 dB

SAR (1g) = 3.57 W/kg; SAR (8g) = 1.39 W/kg; SAR (10g) = 1.22 W/kg

Smallest distance from peaks to all points 3 dB below = 7.0 mm

Ratio of SAR at M2 to SAR at M1 = 73.2 %



System Check_Head_3900MHz

DUT: D3900V2 - SN1092

Communication System: CW; Frequency: 3900.000 MHz; Duty Cycle: 1:1
Medium: HSL_3900_231101 Medium parameters used: $f=3900.000$ MHz; $\sigma=3.35$ S/m; $\epsilon_r=37.8$
Ambient Temperature: 23.2°C; Liquid Temperature: 22.2°C

DASY8 Configuration:

- Probe: EX3DV4 - SN7692; ConvF(7.06, 6.86, 8.01); Calibrated: 2023-07-18
- Sensor-Surface: 1.4 mm
- Electronics: DAE4 Sn661; Calibrated: 2023-05-23
- Phantom: Twin-SAM V8.0 (30deg probe tilt); Serial: 2079_Gap; Section: Flat
- Measurement Software: 16.2.4.2524
- UID: CW

Pin=17dBm/Area Scan (40.0 mm x 80.0 mm): Measurement Grid: 10.0 mm x 10.0 mm
SAR (1g) = 3.19 W/kg; SAR (10g) = 1.10 W/kg;

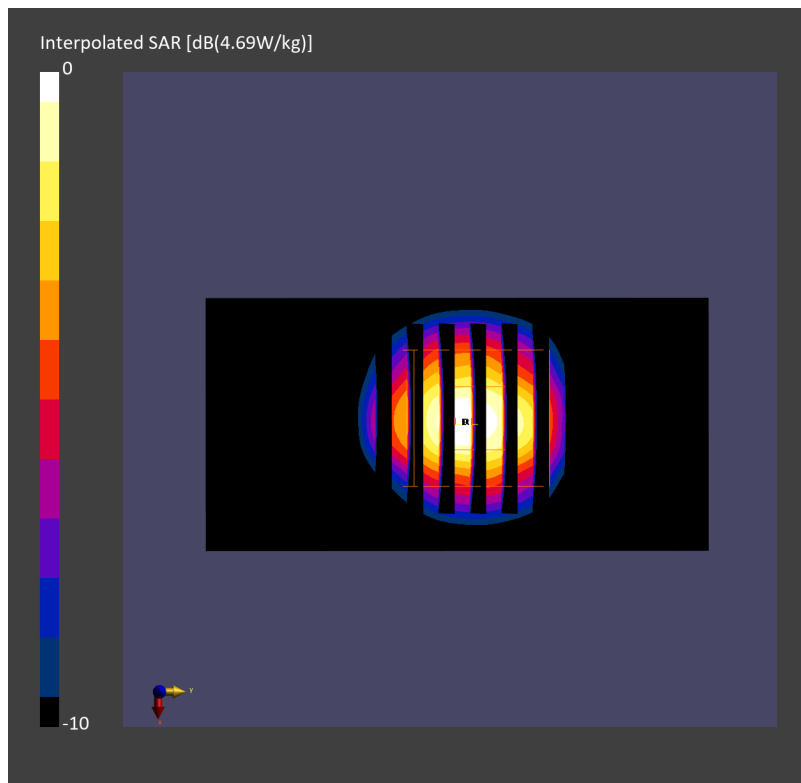
Pin=17dBm/Zoom Scan (28.0 mm x 28.0 mm x 28.0 mm): Measurement Grid: 5.0 mm x 5.0 mm x 1.4 mm

Power Drift = -0.01 dB

SAR (1g) = 3.33 W/kg; SAR (8g) = 1.33 W/kg; SAR (10g) = 1.16 W/kg

Smallest distance from peaks to all points 3 dB below = 7.7 mm

Ratio of SAR at M2 to SAR at M1 = 73.3 %



System Check_Head_5250MHz

DUT: D5GHzV2 - SN1171

Communication System: CW; Frequency: 5250.000 MHz; Duty Cycle: 1:1

Medium: HSL_5G_231007 Medium parameters used: $f = 5250.000$ MHz; $\sigma = 4.60$ S/m; $\epsilon_r = 35.4$

Ambient Temperature: 23.3°C; Liquid Temperature: 22.3°C

DASY6 Configuration:

- Probe: EX3DV4 - SN7791; ConvF(4.93, 5.47, 4.85); Calibrated: 2023-02-22
- Sensor-Surface: 1.4 mm
- Electronics: DAE4 Sn699; Calibrated: 2023-02-22
- Phantom: Twin-SAM V8.0 (30deg probe tilt); Serial: 1919; Section: Flat
- Measurement Software: 16.2.4.2524
- UID: CW

Pin=17.0dBm/Area Scan (40.0 mm x 80.0 mm): Measurement Grid: 10.0 mm x 10.0 mm
SAR (1g) = 3.69 W/kg; SAR (10g) = 1.07 W/kg;

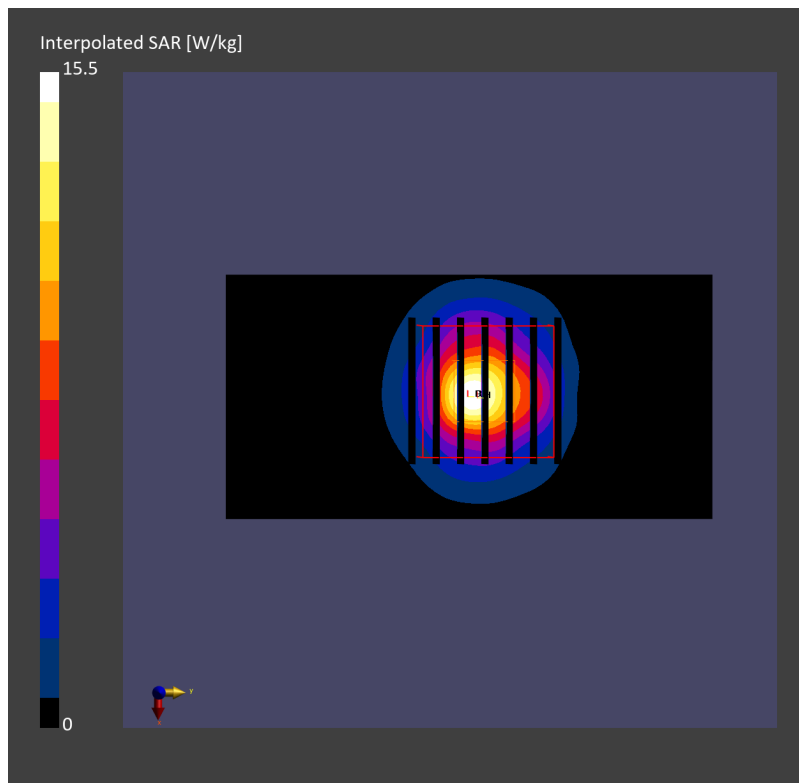
Pin=17.0dBm/Zoom Scan (22.0 mm x 22.0 mm x 22.0 mm): Measurement Grid: 4.0 mm x 4.0 mm x 1.4 mm

Power Drift = -0.19 dB

SAR (1g) = 3.85 W/kg; SAR (8g) = 1.27 W/kg; SAR (10g) = 1.09 W/kg

Smallest distance from peaks to all points 3 dB below = 7.2 mm

Ratio of SAR at M2 to SAR at M1 = 62.8 %



System Check_5250MHz

DUT: D5GHzV2 - SN1171

Communication System: CW; Frequency: 5250.000 MHz; Duty Cycle: 1:1
Medium: HSL_5G_231014 Medium parameters used: $f= 5250.000$ MHz; $\sigma= 4.75$ S/m; $\epsilon_r = 37.0$
Ambient Temperature: 23.3°C; Liquid Temperature: 22.3°C

DASY6 Configuration:

- Probe: EX3DV4 - SN7785; ConvF(5.18, 5.03, 5.06); Calibrated: 2023-01-05
- Sensor-Surface: 1.4 mm
- Electronics: DAE4 Sn699; Calibrated: 2023-02-22
- Phantom: Twin-SAM V8.0 (30deg probe tilt); Serial: 1919; Section: Flat
- Measurement Software: 16.2.4.2524
- UID: CW

Pin=20.0dBm/Area Scan (40.0 mm x 80.0 mm): Measurement Grid: 10.0 mm x 10.0 mm
SAR (1g) = 7.01 W/kg; SAR (10g) = 1.99 W/kg;

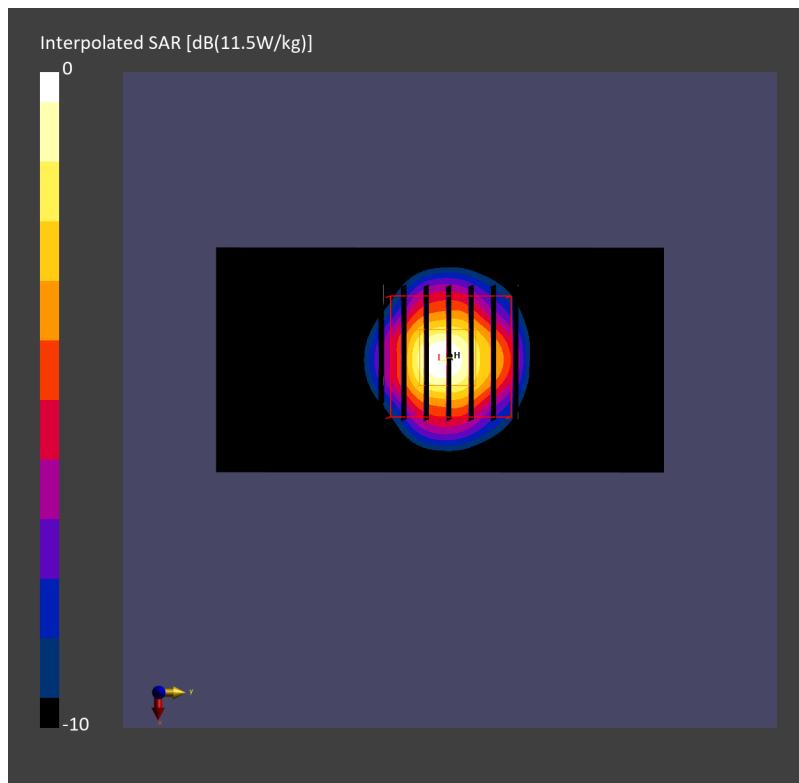
Pin=20.0dBm/Zoom Scan (22.0 mm x 22.0 mm x 22.0 mm): Measurement Grid: 4.0 mm x 4.0 mm x 1.4 mm

Power Drift = 0.00 dB

SAR (1g) = 7.41 W/kg; SAR (8g) = 2.47 W/kg; SAR (10g) = 2.12 W/kg

Smallest distance from peaks to all points 3 dB below = 7.3 mm

Ratio of SAR at M2 to SAR at M1 = 66.6 %



System Check_5250MHz

DUT: D5GHzV2 - SN1171

Communication System: CW; Frequency: 5250.000 MHz; Duty Cycle: 1:1
Medium: HSL_5G_231015 Medium parameters used: $f= 5250.000$ MHz; $\sigma= 4.82$ S/m; $\epsilon_r = 36.9$
Ambient Temperature: 23.3°C; Liquid Temperature: 22.3°C

DASY6 Configuration:

- Probe: EX3DV4 - SN7785; ConvF(5.18, 5.03, 5.06); Calibrated: 2023-01-05
- Sensor-Surface: 1.4 mm
- Electronics: DAE4 Sn699; Calibrated: 2023-02-22
- Phantom: Twin-SAM V8.0 (30deg probe tilt); Serial: 1919; Section: Flat
- Measurement Software: 16.2.4.2524
- UID: CW

Pin=20.0dBm/Area Scan (40.0 mm x 80.0 mm): Measurement Grid: 10.0 mm x 10.0 mm
SAR (1g) = 7.30 W/kg; SAR (10g) = 2.04 W/kg;

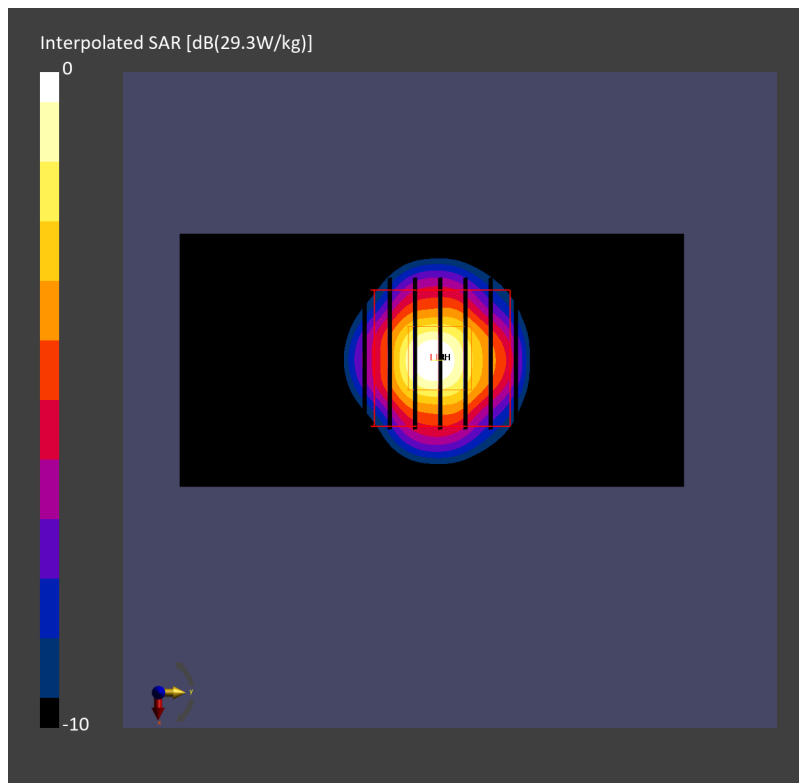
Pin=20.0dBm/Zoom Scan (22.0 mm x 22.0 mm x 22.0 mm): Measurement Grid: 4.0 mm x 4.0 mm x 1.4 mm

Power Drift = 0.03 dB

SAR (1g) = 7.83 W/kg; SAR (8g) = 2.59 W/kg; SAR (10g) = 2.23 W/kg

Smallest distance from peaks to all points 3 dB below = 7.2 mm

Ratio of SAR at M2 to SAR at M1 = 66.6 %



System Check_Head_5250MHz

DUT: D5GHzV2 - SN1171

Communication System: CW; Frequency: 5250.000 MHz; Duty Cycle: 1:1
Medium: HSL_5G_231016 Medium parameters used: $f= 5250.000$ MHz; $\sigma= 4.68$ S/m; $\epsilon_r = 35.7$
Ambient Temperature: 23.3°C; Liquid Temperature: 22.3°C

DASY6 Configuration:

- Probe: EX3DV4 - SN7785; ConvF(5.18, 5.03, 5.06); Calibrated: 2023-01-05
- Sensor-Surface: 1.4 mm
- Electronics: DAE4 Sn699; Calibrated: 2023-02-22
- Phantom: Twin-SAM V8.0 (30deg probe tilt); Serial: 1919; Section: Flat
- Measurement Software: 16.2.4.2524
- UID: CW

Pin=20.0dBm/Area Scan (40.0 mm x 80.0 mm): Measurement Grid: 10.0 mm x 10.0 mm
SAR (1g) = 7.45 W/kg; SAR (10g) = 2.12 W/kg;

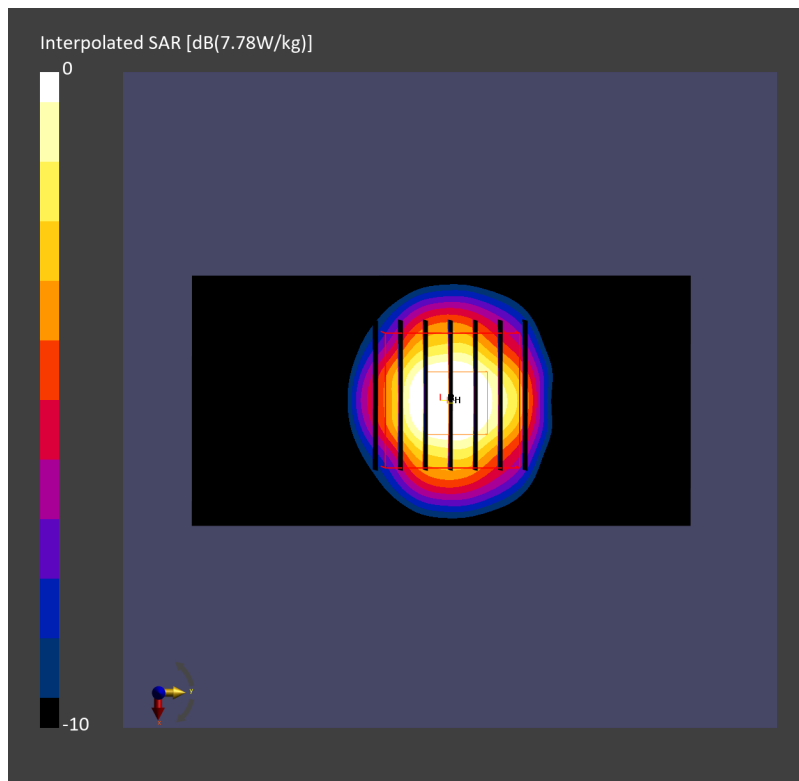
Pin=20.0dBm/Zoom Scan (22.0 mm x 22.0 mm x 22.0 mm): Measurement Grid: 4.0 mm x 4.0 mm x 1.4 mm

Power Drift = -0.07 dB

SAR (1g) = 7.78 W/kg; SAR (8g) = 2.61 W/kg; SAR (10g) = 2.24 W/kg

Smallest distance from peaks to all points 3 dB below = 7.2 mm

Ratio of SAR at M2 to SAR at M1 = 66.7 %



System Check_Head_5250MHz

DUT: D5GHzV2 - SN1171

Communication System: CW; Frequency: 5250.000 MHz; Duty Cycle: 1:1

Medium: HSL_5G_231016 Medium parameters used: $f= 5250.000$ MHz; $\sigma= 4.82$ S/m; $\epsilon_r = 36.5$

Ambient Temperature: 23.6°C; Liquid Temperature: 22.6°C

DASY6 Configuration:

- Probe: EX3DV4 - SN7791; ConvF(4.93, 5.47, 4.85); Calibrated: 2023-02-22
- Sensor-Surface: 1.4 mm
- Electronics: DAE4 Sn1697; Calibrated: 2022-12-15
- Phantom: Twin-SAM V4.0 (30deg probe tilt); Serial: 1488; Section: Flat
- Measurement Software: 16.2.4.2524
- UID: CW

Pin=17.0dBm/Area Scan (40.0 mm x 80.0 mm): Measurement Grid: 10.0 mm x 10.0 mm

SAR (1g) = 3.47 W/kg; SAR (10g) = 1.03 W/kg;

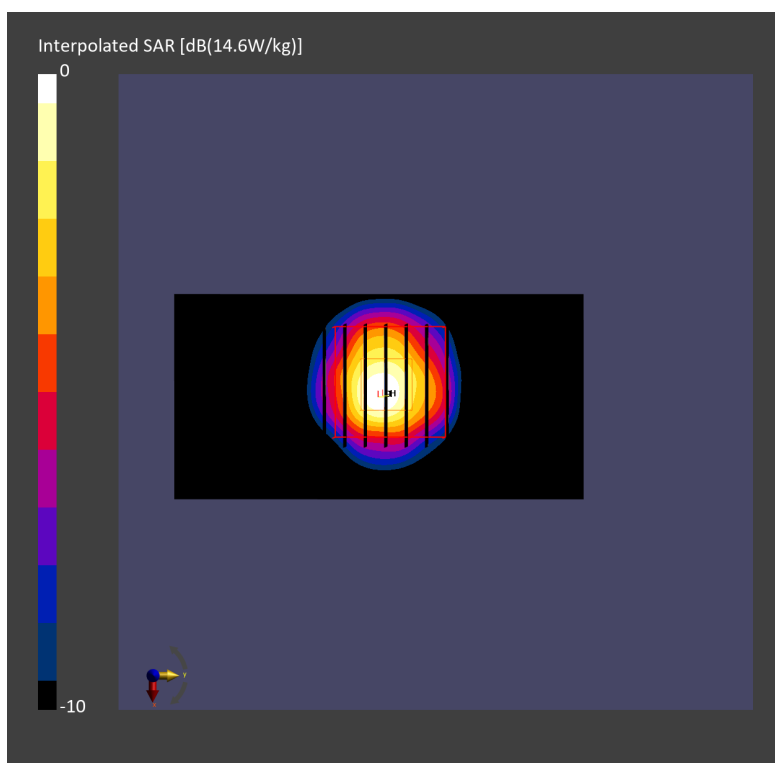
Pin=17.0dBm/Zoom Scan (22.0 mm x 22.0 mm x 22.0 mm): Measurement Grid: 4.0 mm x 4.0 mm x 1.4 mm

Power Drift = -0.01 dB

SAR (1g) = 3.87 W/kg; SAR (8g) = 1.30 W/kg; SAR (10g) = 1.12 W/kg

Smallest distance from peaks to all points 3 dB below = 7.2 mm

Ratio of SAR at M2 to SAR at M1 = 65.2 %



System Check_Head_5250MHz

DUT: D5GHzV2 - SN1171

Communication System: CW; Frequency: 5250.000 MHz; Duty Cycle: 1:1

Medium: HSL_5G_231017 Medium parameters used: $f = 5250.000$ MHz; $\sigma = 4.68$ S/m; $\epsilon_r = 36.0$

Ambient Temperature: 23.3°C; Liquid Temperature: 22.3°C

DASY6 Configuration:

- Probe: EX3DV4 - SN7785; ConvF(5.18, 5.03, 5.06); Calibrated: 2023-01-05
- Sensor-Surface: 1.4 mm
- Electronics: DAE4 Sn699; Calibrated: 2023-02-22
- Phantom: Twin-SAM V8.0 (30deg probe tilt); Serial: 1919; Section: Flat
- Measurement Software: 16.2.4.2524
- UID: CW

Pin=20.0dBm/Area Scan (40.0 mm x 80.0 mm): Measurement Grid: 10.0 mm x 10.0 mm
SAR (1g) = 7.63 W/kg; SAR (10g) = 2.19 W/kg;

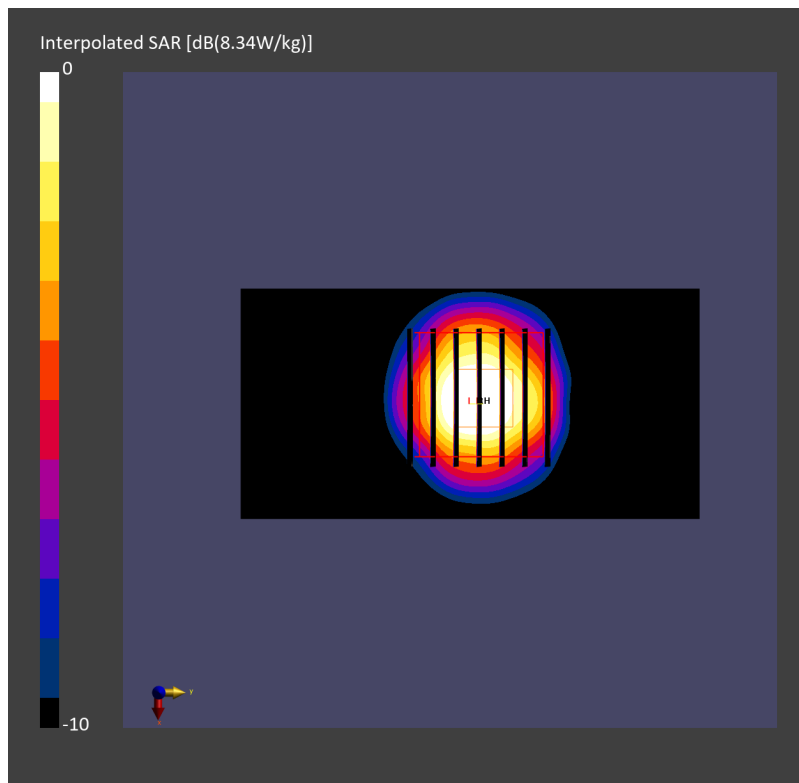
Pin=20.0dBm/Zoom Scan (22.0 mm x 22.0 mm x 22.0 mm): Measurement Grid: 4.0 mm x 4.0 mm x 1.4 mm

Power Drift = -0.10 dB

SAR (1g) = 8.34 W/kg; SAR (8g) = 2.76 W/kg; SAR (10g) = 2.37 W/kg

Smallest distance from peaks to all points 3 dB below = 7.2 mm

Ratio of SAR at M2 to SAR at M1 = 63.9 %



System Check_Head_5250MHz

DUT: D5GHzV2 - SN1171

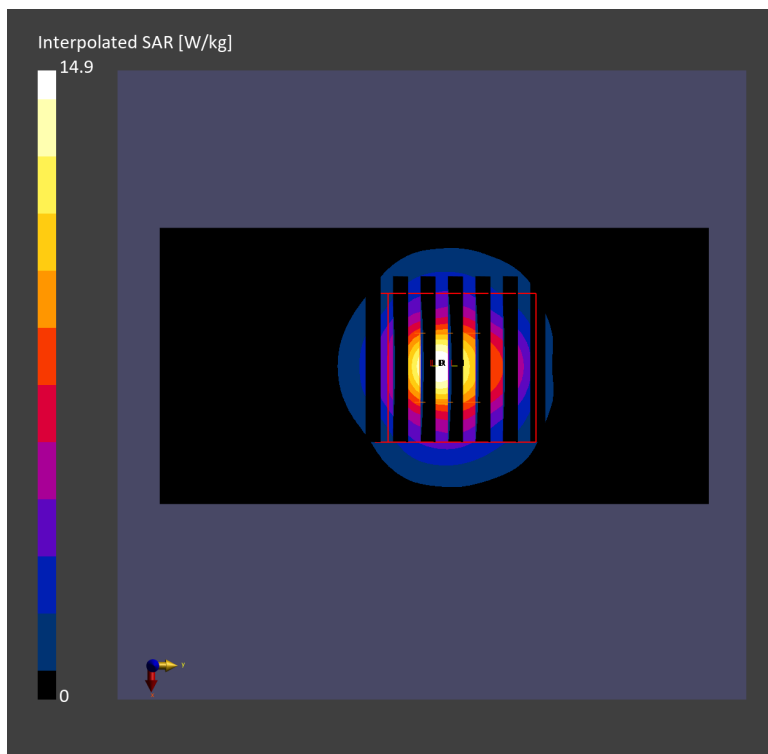
Communication System: CW; Frequency: 5250.000 MHz; Duty Cycle: 1:1
Medium: HSL_5G_231018 Medium parameters used: $f=5250.000$ MHz; $\sigma=4.70$ S/m; $\epsilon_r=36.8$
Ambient Temperature: 23.6°C; Liquid Temperature: 22.6°C

DASY8 Configuration:

- Probe: EX3DV4 - SN7692; ConvF(5.84, 5.74, 6.7); Calibrated: 2023-07-18
- Sensor-Surface: 1.4 mm
- Electronics: DAE4 Sn661; Calibrated: 2023-05-23
- Phantom: Twin-SAM V8.0 (30deg probe tilt); Serial: 2079; Section: Flat
- Measurement Software: 16.2.4.2524
- UID: CW

Pin=17.0dBm/Area Scan (40.0 mm x 80.0 mm): Measurement Grid: 10.0 mm x 10.0 mm
SAR (1g) = 3.38 W/kg; SAR (10g) = 0.942 W/kg;

Pin=17.0dBm/Zoom Scan (22.0 mm x 22.0 mm x 22.0 mm): Measurement Grid: 4.0 mm x 4.0 mm x 1.4 mm
Power Drift = -0.10 dB
SAR (1g) = 3.82 W/kg; SAR (8g) = 1.24 W/kg; SAR (10g) = 1.06 W/kg
Smallest distance from peaks to all points 3 dB below = 6.9 mm
Ratio of SAR at M2 to SAR at M1 = 64.4 %



System Check_Head_5250MHz

DUT: D5GHzV2 - SN1171

Communication System: CW; Frequency: 5250.000 MHz; Duty Cycle: 1:1

Medium: HSL_5G_231018 Medium parameters used: $f = 5250.000$ MHz; $\sigma = 4.57$ S/m; $\epsilon_r = 35.4$

Ambient Temperature: 23.8°C; Liquid Temperature: 22.8°C

DASY8 Configuration:

- Probe: EX3DV4 - SN7700; ConvF(5.91, 5.91, 5.91); Calibrated: 2023-01-24
- Sensor-Surface: 1.4 mm
- Electronics: DAE4 Sn1707; Calibrated: 2022-12-15
- Phantom: Twin-SAM V8.0 (30deg probe tilt); Serial: 2079_For Gap; Section: Flat
- Measurement Software: 16.2.4.2524
- UID: CW

Pin=17dBm/Area Scan (40.0 mm x 80.0 mm): Measurement Grid: 10.0 mm x 10.0 mm

SAR (1g) = 3.73 W/kg; SAR (10g) = 1.04 W/kg;

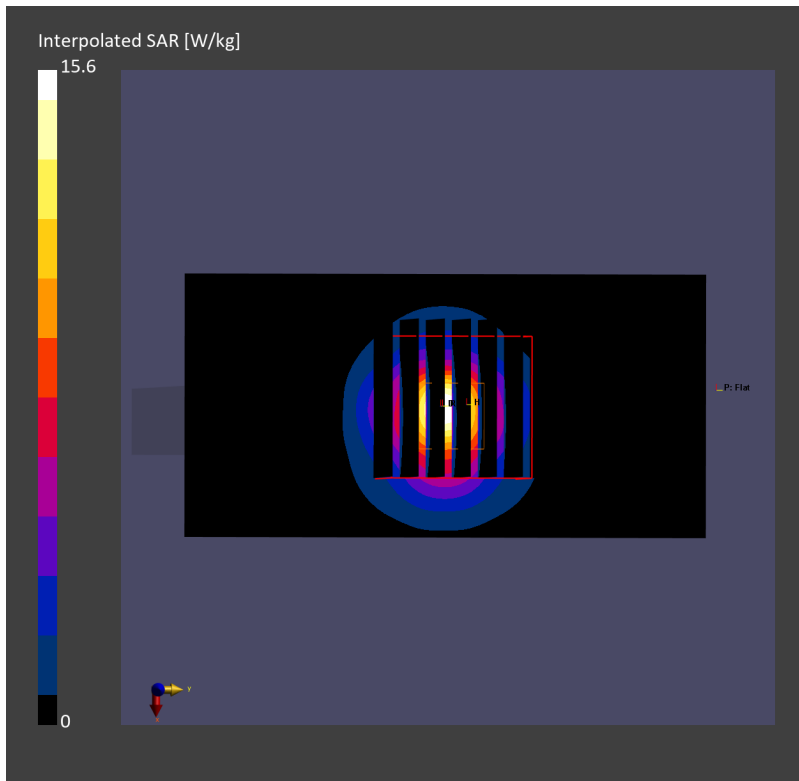
Pin=17dBm/Zoom Scan (22.0 mm x 22.0 mm x 22.0 mm): Measurement Grid: 4.0 mm x 4.0 mm x 1.4 mm

Power Drift = -0.01 dB

SAR (1g) = 4.16 W/kg; SAR (8g) = 1.33 W/kg; SAR (10g) = 1.13 W/kg

Smallest distance from peaks to all points 3 dB below = 6.9 mm

Ratio of SAR at M2 to SAR at M1 = 66.2 %



System Check_Head_5250MHz

DUT: D5GHzV2 - SN1171

Communication System: CW; Frequency: 5250.000 MHz; Duty Cycle: 1:1

Medium: HSL_5G_231020 Medium parameters used: $f= 5250.000$ MHz; $\sigma= 4.67$ S/m; $\epsilon_r = 37.2$

Ambient Temperature: 23.5°C; Liquid Temperature: 22.5°C

DASY6 Configuration:

- Probe: EX3DV4 - SN7695; ConvF(5.72, 5.86, 6.29); Calibrated: 2023-05-22
- Sensor-Surface: 1.4 mm
- Electronics: DAE4 Sn1697; Calibrated: 2022-12-15
- Phantom: Twin-SAM V4.0 (30deg probe tilt); Serial: 1488; Section: Flat
- Measurement Software: 16.2.4.2524
- UID: CW, 0--

Pin=17.0dBm/Area Scan (40.0 mm x 80.0 mm): Measurement Grid: 10.0 mm x 10.0 mm

SAR (1g) = 3.14 W/kg; SAR (10g) = 0.900 W/kg;

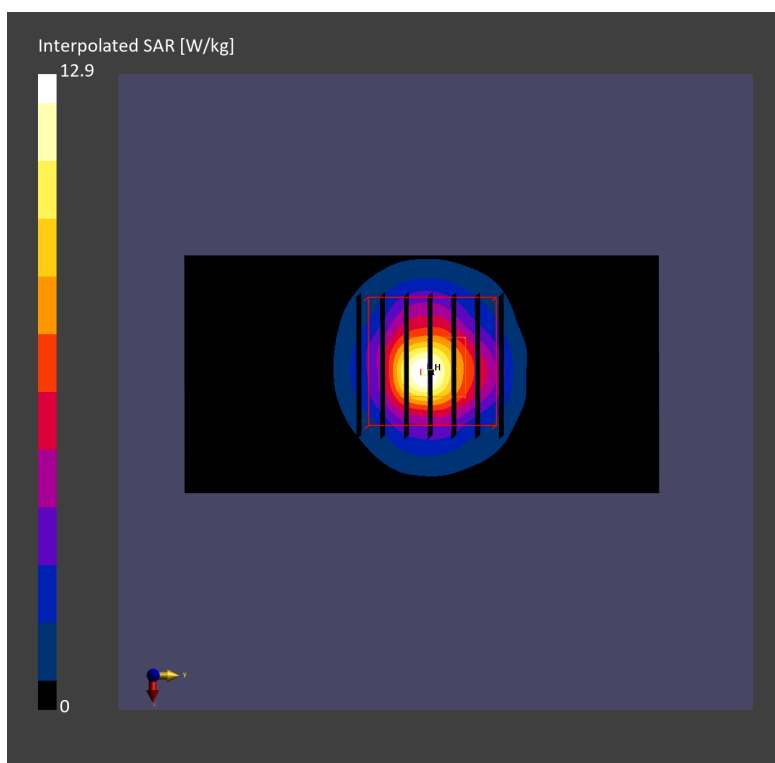
Pin=17.0dBm/Zoom Scan (22.0 mm x 22.0 mm x 22.0 mm): Measurement Grid: 4.0 mm x 4.0 mm x 1.4 mm

Power Drift = -0.02 dB

SAR (1g) = 3.77 W/kg; SAR (8g) = 1.33 W/kg; SAR (10g) = 1.10 W/kg

Smallest distance from peaks to all points 3 dB below = 7.2 mm

Ratio of SAR at M2 to SAR at M1 = 64.9 %



System Check_Head_5600MHz

DUT: D5GHzV2 - SN1171

Communication System: CW; Frequency: 5600.000 MHz; Duty Cycle: 1:1

Medium: HSL_5G_231007 Medium parameters used: $f = 5600.000$ MHz; $\sigma = 5.00$ S/m; $\epsilon_r = 34.8$

Ambient Temperature: 23.3°C; Liquid Temperature: 22.3°C

DASY6 Configuration:

- Probe: EX3DV4 - SN7791; ConvF(4.35, 4.72, 4.41); Calibrated: 2023-02-22
- Sensor-Surface: 1.4 mm
- Electronics: DAE4 Sn699; Calibrated: 2023-02-22
- Phantom: Twin-SAM V8.0 (30deg probe tilt); Serial: 1919; Section: Flat
- Measurement Software: 16.2.4.2524
- UID: CW

Pin=17.0dBm/Area Scan (40.0 mm x 80.0 mm): Measurement Grid: 10.0 mm x 10.0 mm
SAR (1g) = 3.96 W/kg; SAR (10g) = 1.14 W/kg;

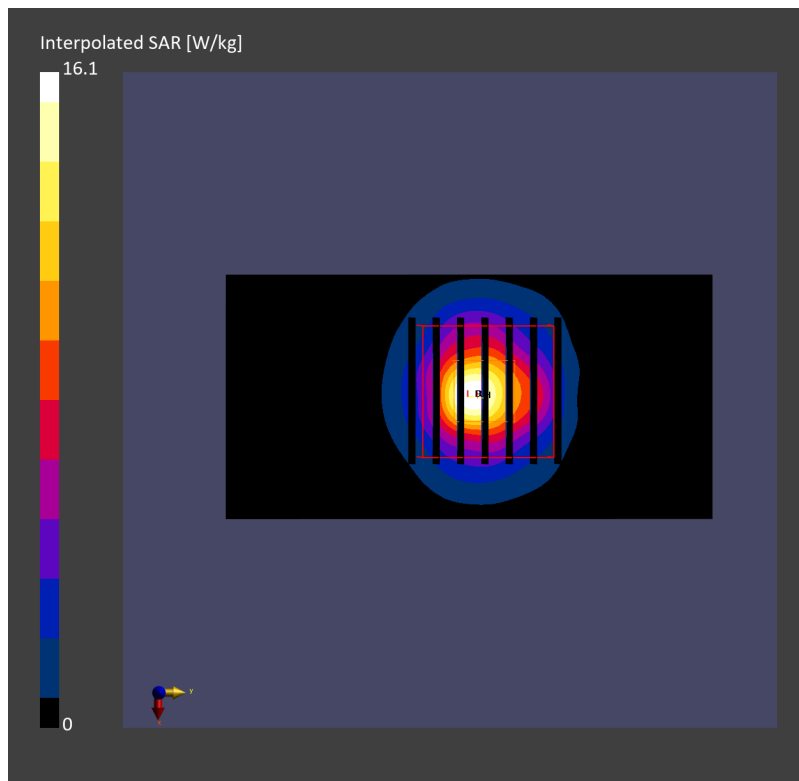
Pin=17.0dBm/Zoom Scan (22.0 mm x 22.0 mm x 22.0 mm): Measurement Grid: 4.0 mm x 4.0 mm x 1.4 mm

Power Drift = -0.05 dB

SAR (1g) = 4.12 W/kg; SAR (8g) = 1.37 W/kg; SAR (10g) = 1.17 W/kg

Smallest distance from peaks to all points 3 dB below = 7.2 mm

Ratio of SAR at M2 to SAR at M1 = 64.2 %



System Check_5600MHz

DUT: D5GHzV2 - SN1171

Communication System: CW; Frequency: 5600.000 MHz; Duty Cycle: 1:1
Medium: HSL_5G_231014 Medium parameters used: $f= 5600.000$ MHz; $\sigma= 5.12$ S/m; $\epsilon_r = 36.5$
Ambient Temperature: 23.3°C; Liquid Temperature: 22.3°C

DASY6 Configuration:

- Probe: EX3DV4 - SN7785; ConvF(4.43, 4.27, 4.42); Calibrated: 2023-01-05
- Sensor-Surface: 1.4 mm
- Electronics: DAE4 Sn699; Calibrated: 2023-02-22
- Phantom: Twin-SAM V8.0 (30deg probe tilt); Serial: 1919; Section: Flat
- Measurement Software: 16.2.4.2524
- UID: CW

Pin=20.0dBm/Area Scan (40.0 mm x 80.0 mm): Measurement Grid: 10.0 mm x 10.0 mm
SAR (1g) = 7.75 W/kg; SAR (10g) = 2.18 W/kg;

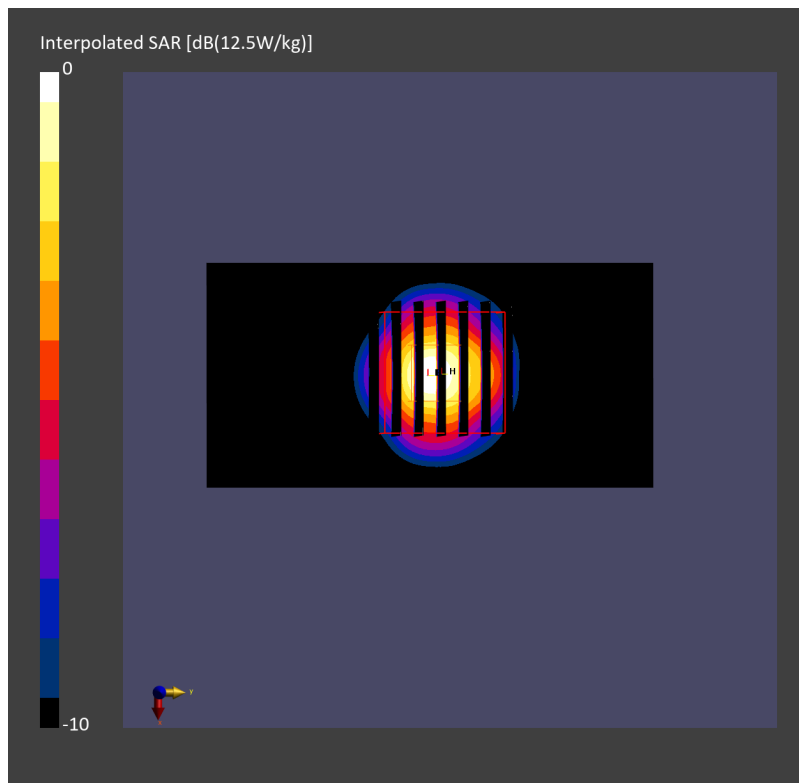
Pin=20.0dBm/Zoom Scan (22.0 mm x 22.0 mm x 22.0 mm): Measurement Grid: 4.0 mm x 4.0 mm x 1.4 mm

Power Drift = -0.00 dB

SAR (1g) = 8.16 W/kg; SAR (8g) = 2.69 W/kg; SAR (10g) = 2.31 W/kg

Smallest distance from peaks to all points 3 dB below = 7.2 mm

Ratio of SAR at M2 to SAR at M1 = 64.8 %



System Check_5600MHz

DUT: D5GHzV2 - SN1171

Communication System: CW; Frequency: 5600.000 MHz; Duty Cycle: 1:1
Medium: HSL_5G_231015 Medium parameters used: $f= 5600.000$ MHz; $\sigma= 5.21$ S/m; $\epsilon_r = 36.3$
Ambient Temperature: 23.3°C; Liquid Temperature: 22.3°C

DASY6 Configuration:

- Probe: EX3DV4 - SN7785; ConvF(4.43, 4.27, 4.42); Calibrated: 2023-01-05
- Sensor-Surface: 1.4 mm
- Electronics: DAE4 Sn699; Calibrated: 2023-02-22
- Phantom: Twin-SAM V8.0 (30deg probe tilt); Serial: 1919; Section: Flat
- Measurement Software: 16.2.4.2524
- UID: CW

Pin=20.0dBm/Area Scan (40.0 mm x 80.0 mm): Measurement Grid: 10.0 mm x 10.0 mm
SAR (1g) = 7.65 W/kg; SAR (10g) = 2.12 W/kg;

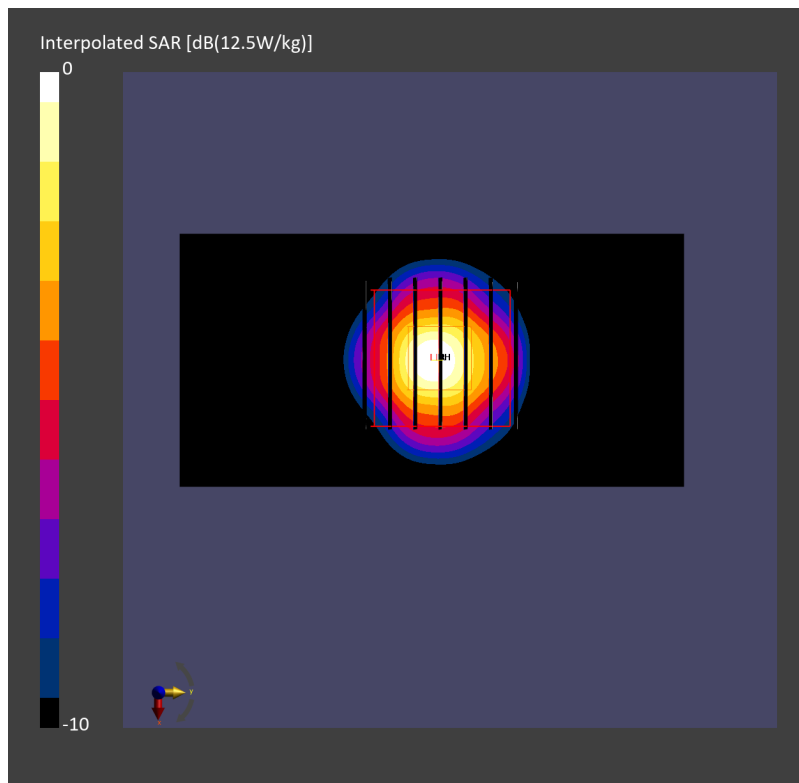
Pin=20.0dBm/Zoom Scan (22.0 mm x 22.0 mm x 22.0 mm): Measurement Grid: 4.0 mm x 4.0 mm x 1.4 mm

Power Drift = -0.02 dB

SAR (1g) = 8.04 W/kg; SAR (8g) = 2.64 W/kg; SAR (10g) = 2.26 W/kg

Smallest distance from peaks to all points 3 dB below = 7.2 mm

Ratio of SAR at M2 to SAR at M1 = 64.4 %



System Check_Head_5600MHz

DUT: D5GHzV2 - SN1171

Communication System: CW; Frequency: 5600.000 MHz; Duty Cycle: 1:1

Medium: HSL_5G_231016 Medium parameters used: $f = 5600.000$ MHz; $\sigma = 5.08$ S/m; $\epsilon_r = 35.1$

Ambient Temperature: 23.3°C; Liquid Temperature: 22.3°C

DASY6 Configuration:

- Probe: EX3DV4 - SN7785; ConvF(4.43, 4.27, 4.42); Calibrated: 2023-01-05
- Sensor-Surface: 1.4 mm
- Electronics: DAE4 Sn699; Calibrated: 2023-02-22
- Phantom: Twin-SAM V8.0 (30deg probe tilt); Serial: 1919; Section: Flat
- Measurement Software: 16.2.4.2524
- UID: CW

Pin=20.0dBm/Area Scan (40.0 mm x 80.0 mm): Measurement Grid: 10.0 mm x 10.0 mm
SAR (1g) = 7.73 W/kg; SAR (10g) = 2.17 W/kg;

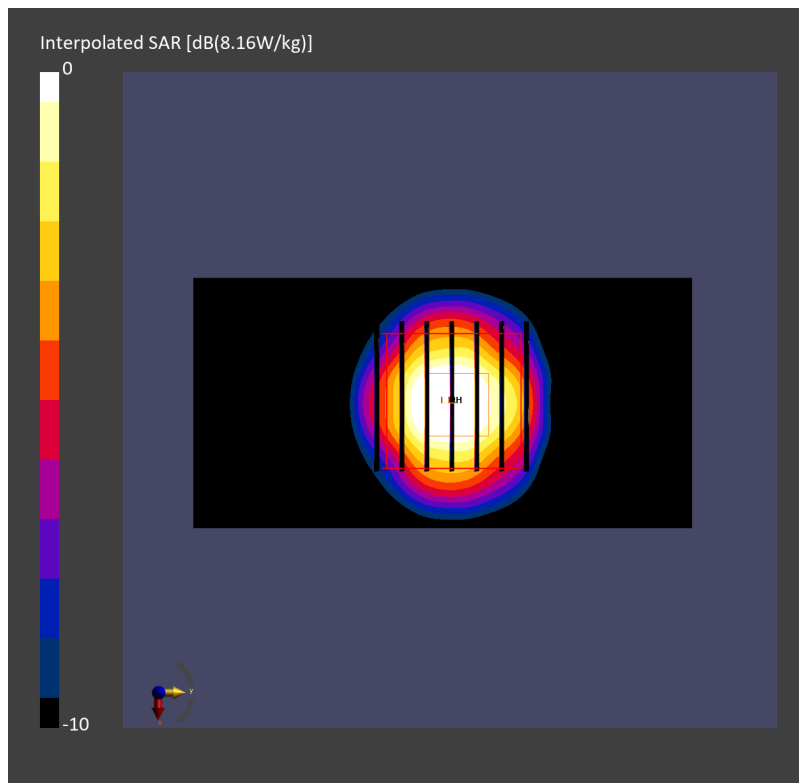
Pin=20.0dBm/Zoom Scan (22.0 mm x 22.0 mm x 22.0 mm): Measurement Grid: 4.0 mm x 4.0 mm x 1.4 mm

Power Drift = 0.00 dB

SAR (1g) = 8.16 W/kg; SAR (8g) = 2.70 W/kg; SAR (10g) = 2.31 W/kg

Smallest distance from peaks to all points 3 dB below = 7.2 mm

Ratio of SAR at M2 to SAR at M1 = 65.4 %



System Check_Head_5600MHz

DUT: D5GHzV2 - SN1171

Communication System: CW; Frequency: 5600.000 MHz; Duty Cycle: 1:1

Medium: HSL_5G_231017 Medium parameters used: $f = 5600.000$ MHz; $\sigma = 5.08$ S/m; $\epsilon_r = 35.4$

Ambient Temperature: 23.3°C; Liquid Temperature: 22.3°C

DASY6 Configuration:

- Probe: EX3DV4 - SN7785; ConvF(4.43, 4.27, 4.42); Calibrated: 2023-01-05
- Sensor-Surface: 1.4 mm
- Electronics: DAE4 Sn699; Calibrated: 2023-02-22
- Phantom: Twin-SAM V8.0 (30deg probe tilt); Serial: 1919; Section: Flat
- Measurement Software: 16.2.4.2524
- UID: CW

Pin=20.0dBm/Area Scan (40.0 mm x 80.0 mm): Measurement Grid: 10.0 mm x 10.0 mm
SAR (1g) = 7.51 W/kg; SAR (10g) = 2.11 W/kg;

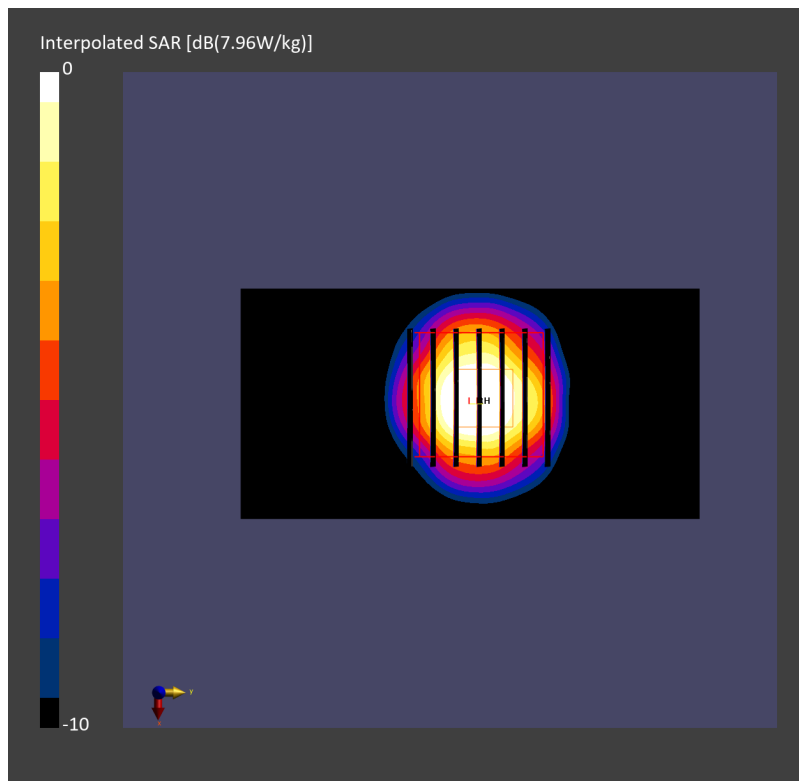
Pin=20.0dBm/Zoom Scan (22.0 mm x 22.0 mm x 22.0 mm): Measurement Grid: 4.0 mm x 4.0 mm x 1.4 mm

Power Drift = -0.04 dB

SAR (1g) = 7.96 W/kg; SAR (8g) = 2.61 W/kg; SAR (10g) = 2.24 W/kg

Smallest distance from peaks to all points 3 dB below = 7.3 mm

Ratio of SAR at M2 to SAR at M1 = 63.3 %



System Check_Head_5600MHz

DUT: D5GHzV2 - SN1171

Communication System: CW; Frequency: 5600.000 MHz; Duty Cycle: 1:1

Medium: HSL_5G_231018 Medium parameters used: $f = 5600.000$ MHz; $\sigma = 5.06$ S/m; $\epsilon_r = 36.3$

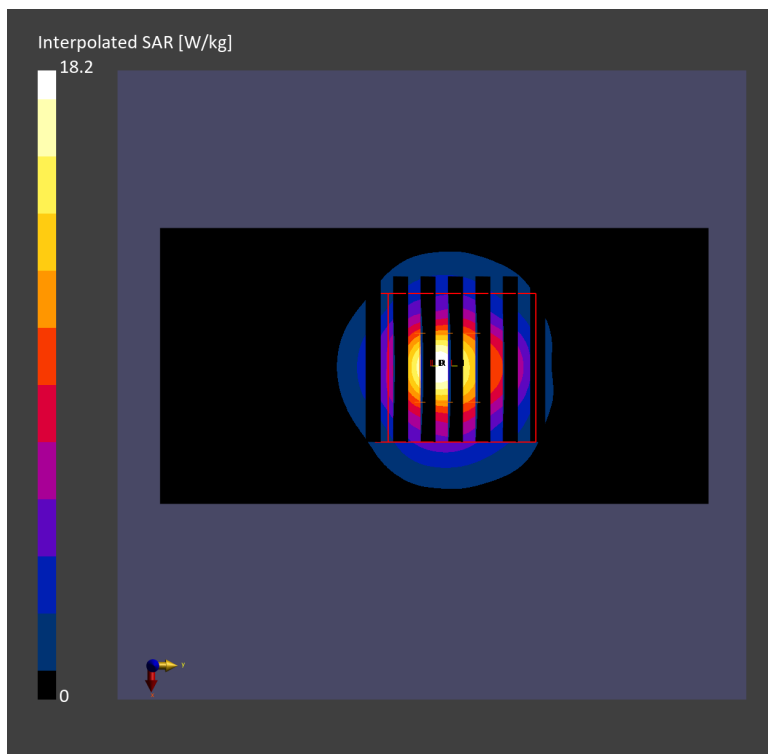
Ambient Temperature: 23.6°C; Liquid Temperature: 22.6°C

DASY8 Configuration:

- Probe: EX3DV4 - SN7692; ConvF(5.09, 4.94, 5.73); Calibrated: 2023-07-18
- Sensor-Surface: 1.4 mm
- Electronics: DAE4 Sn661; Calibrated: 2023-05-23
- Phantom: Twin-SAM V8.0 (30deg probe tilt); Serial: 2079; Section: Flat
- Measurement Software: 16.2.4.2524
- UID: CW

Pin=17.0dBm/Area Scan (40.0 mm x 80.0 mm): Measurement Grid: 10.0 mm x 10.0 mm
SAR (1g) = 3.81 W/kg; SAR (10g) = 1.05 W/kg;

Pin=17.0dBm/Zoom Scan (22.0 mm x 22.0 mm x 22.0 mm): Measurement Grid: 4.0 mm x 4.0 mm x 1.4 mm
Power Drift = -0.19 dB
SAR (1g) = 4.34 W/kg; SAR (8g) = 1.40 W/kg; SAR (10g) = 1.19 W/kg
Smallest distance from peaks to all points 3 dB below = 7.2 mm
Ratio of SAR at M2 to SAR at M1 = 61.4 %



System Check_Head_5600MHz

DUT: D5GHzV2 - SN1171

Communication System: CW; Frequency: 5600.000 MHz; Duty Cycle: 1:1

Medium: HSL_5G_231018 Medium parameters used: $f = 5600.000$ MHz; $\sigma = 4.96$ S/m; $\epsilon_r = 34.8$

Ambient Temperature: 23.8°C; Liquid Temperature: 22.8°C

DASY6 Configuration:

- Probe: EX3DV4 - SN7700; ConvF(5.07, 5.07, 5.07); Calibrated: 2023-01-24
- Sensor-Surface: 1.4 mm
- Electronics: DAE4 Sn1707; Calibrated: 2022-12-15
- Phantom: Twin-SAM V8.0 (30deg probe tilt); Serial: 2079_For Gap; Section: Flat
- Measurement Software: 16.2.4.2524
- UID: CW

Pin=17dBm/Area Scan (40.0 mm x 80.0 mm): Measurement Grid: 10.0 mm x 10.0 mm

SAR (1g) = 3.93 W/kg; SAR (10g) = 1.08 W/kg;

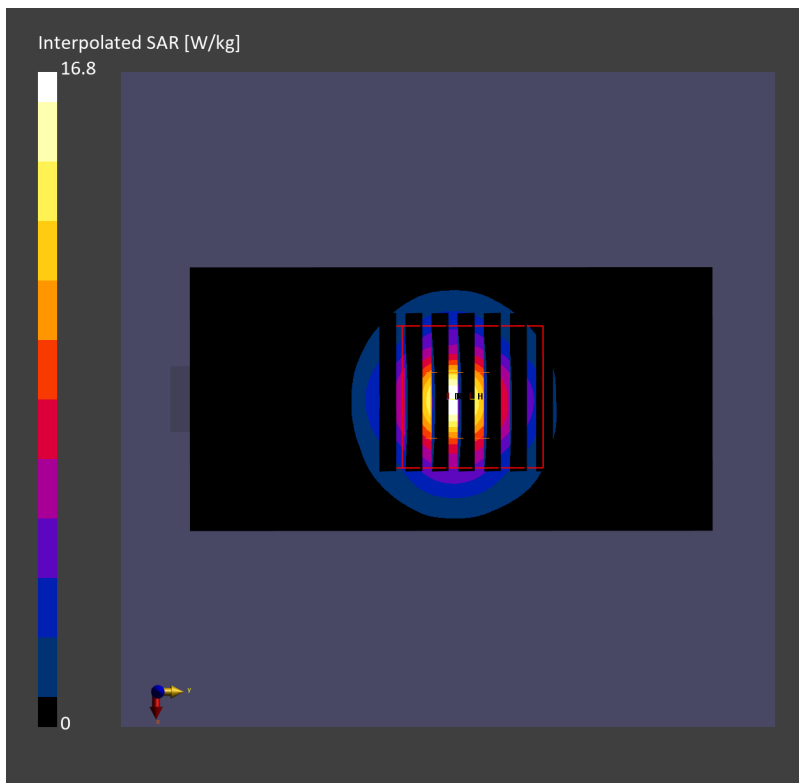
Pin=17dBm/Zoom Scan (22.0 mm x 22.0 mm x 22.0 mm): Measurement Grid: 4.0 mm x 4.0 mm x 1.4 mm

Power Drift = 0.02 dB

SAR (1g) = 4.25 W/kg; SAR (8g) = 1.37 W/kg; SAR (10g) = 1.17 W/kg

Smallest distance from peaks to all points 3 dB below = 6.9 mm

Ratio of SAR at M2 to SAR at M1 = 64.6 %



System Check_Head_5750MHz

DUT: D5GHzV2 - SN1171

Communication System: CW; Frequency: 5750.000 MHz; Duty Cycle: 1:1

Medium: HSL_5G_231007 Medium parameters used: $f = 5750.000$ MHz; $\sigma = 5.18$ S/m; $\epsilon_r = 34.5$

Ambient Temperature: 23.3°C; Liquid Temperature: 22.3°C

DASY6 Configuration:

- Probe: EX3DV4 - SN7791; ConvF(4.44, 4.92, 4.4); Calibrated: 2023-02-22
- Sensor-Surface: 1.4 mm
- Electronics: DAE4 Sn699; Calibrated: 2023-02-22
- Phantom: Twin-SAM V8.0 (30deg probe tilt); Serial: 1919; Section: Flat
- Measurement Software: 16.2.4.2524
- UID: CW

Pin=17.0dBm/Area Scan (40.0 mm x 80.0 mm): Measurement Grid: 10.0 mm x 10.0 mm
SAR (1g) = 3.43 W/kg; SAR (10g) = 0.977 W/kg;

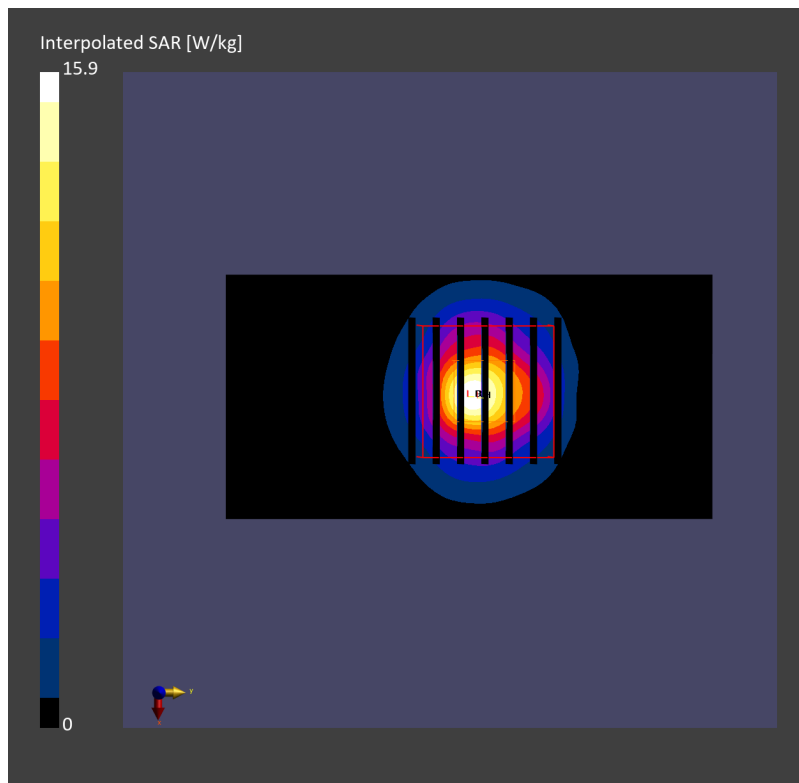
Pin=17.0dBm/Zoom Scan (22.0 mm x 22.0 mm x 22.0 mm): Measurement Grid: 4.0 mm x 4.0 mm x 1.4 mm

Power Drift = -0.04 dB

SAR (1g) = 3.79 W/kg; SAR (8g) = 1.24 W/kg; SAR (10g) = 1.06 W/kg

Smallest distance from peaks to all points 3 dB below = 7.2 mm

Ratio of SAR at M2 to SAR at M1 = 61.7 %



System Check_5750MHz

DUT: D5GHzV2 - SN1171

Communication System: CW; Frequency: 5750.000 MHz; Duty Cycle: 1:1
Medium: HSL_5G_231014 Medium parameters used: $f= 5750.000$ MHz; $\sigma= 5.29$ S/m; $\epsilon_r = 36.3$
Ambient Temperature: 23.3°C; Liquid Temperature: 22.3°C

DASY6 Configuration:

- Probe: EX3DV4 - SN7785; ConvF(4.56, 4.37, 4.41); Calibrated: 2023-01-05
- Sensor-Surface: 1.4 mm
- Electronics: DAE4 Sn699; Calibrated: 2023-02-22
- Phantom: Twin-SAM V8.0 (30deg probe tilt); Serial: 1919; Section: Flat
- Measurement Software: 16.2.4.2524
- UID: CW

Pin=20.0dBm/Area Scan (40.0 mm x 80.0 mm): Measurement Grid: 10.0 mm x 10.0 mm
SAR (1g) = 7.01 W/kg; SAR (10g) = 1.98 W/kg;

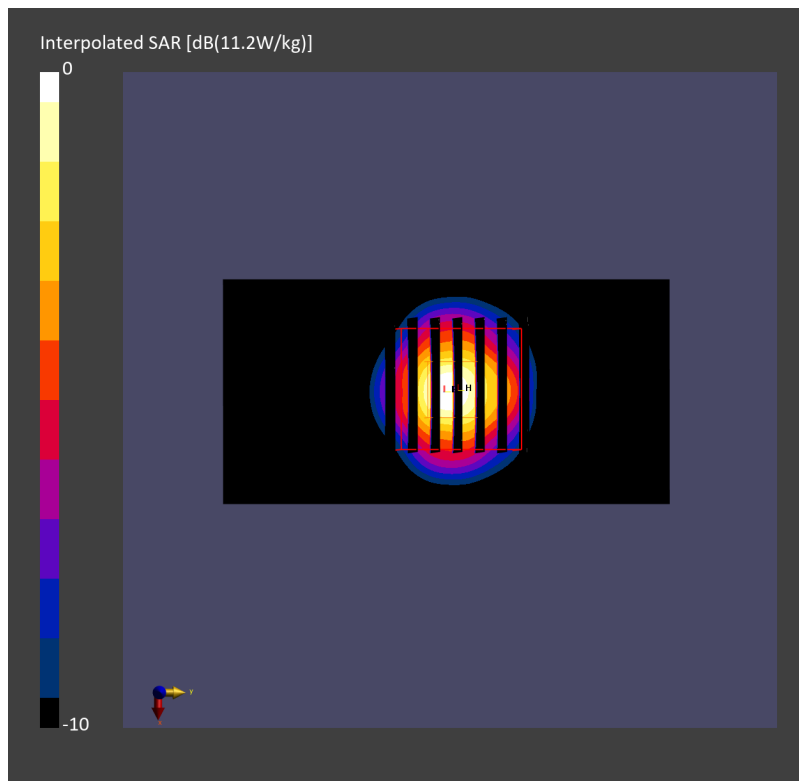
Pin=20.0dBm/Zoom Scan (22.0 mm x 22.0 mm x 22.0 mm): Measurement Grid: 4.0 mm x 4.0 mm x 1.4 mm

Power Drift = 0.01 dB

SAR (1g) = 7.36 W/kg; SAR (8g) = 2.43 W/kg; SAR (10g) = 2.09 W/kg

Smallest distance from peaks to all points 3 dB below = 7.4 mm

Ratio of SAR at M2 to SAR at M1 = 63.6 %



System Check_5750MHz

DUT: D5GHzV2 - SN1171

Communication System: CW; Frequency: 5750.000 MHz; Duty Cycle: 1:1
Medium: HSL_5G_231015 Medium parameters used: $f= 5750.000$ MHz; $\sigma= 5.36$ S/m; $\epsilon_r = 36.2$
Ambient Temperature: 23.3°C; Liquid Temperature: 22.3°C

DASY6 Configuration:

- Probe: EX3DV4 - SN7785; ConvF(4.56, 4.37, 4.41); Calibrated: 2023-01-05
- Sensor-Surface: 1.4 mm
- Electronics: DAE4 Sn699; Calibrated: 2023-02-22
- Phantom: Twin-SAM V8.0 (30deg probe tilt); Serial: 1919; Section: Flat
- Measurement Software: 16.2.4.2524
- UID: CW

Pin=20.0dBm/Area Scan (40.0 mm x 80.0 mm): Measurement Grid: 10.0 mm x 10.0 mm
SAR (1g) = 7.42 W/kg; SAR (10g) = 2.07 W/kg;

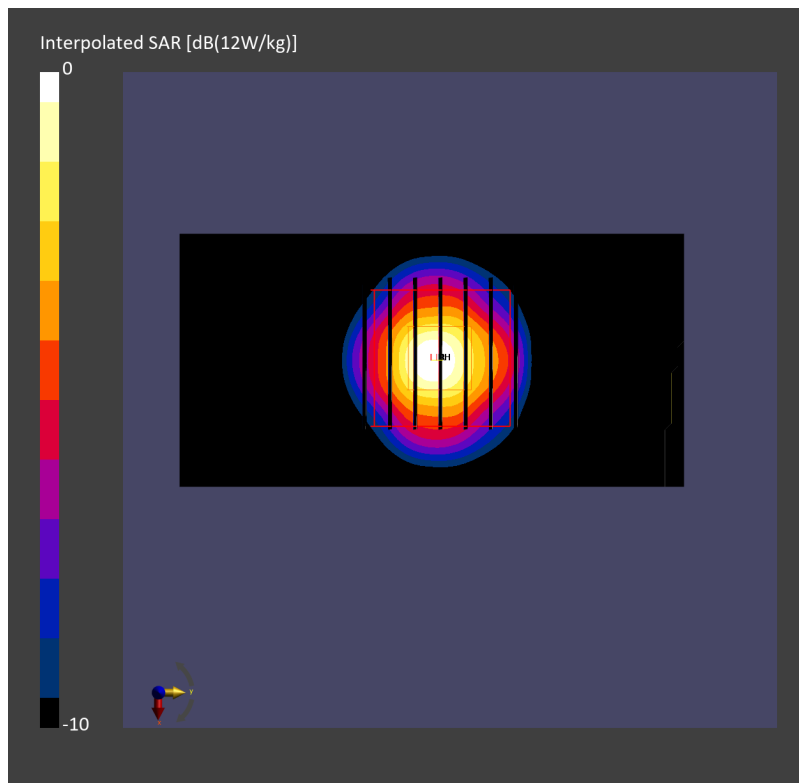
Pin=20.0dBm/Zoom Scan (22.0 mm x 22.0 mm x 22.0 mm): Measurement Grid: 4.0 mm x 4.0 mm x 1.4 mm

Power Drift = -0.04 dB

SAR (1g) = 7.67 W/kg; SAR (8g) = 2.53 W/kg; SAR (10g) = 2.17 W/kg

Smallest distance from peaks to all points 3 dB below = 7.2 mm

Ratio of SAR at M2 to SAR at M1 = 62.6 %



System Check_Head_5750MHz

DUT: D5GHzV2 - SN1171

Communication System: CW; Frequency: 5750.000 MHz; Duty Cycle: 1:1
Medium: HSL_5G_231016 Medium parameters used: $f= 5750.000$ MHz; $\sigma= 5.26$ S/m; $\epsilon_r = 34.8$
Ambient Temperature: 23.3°C; Liquid Temperature: 22.3°C

DASY6 Configuration:

- Probe: EX3DV4 - SN7785; ConvF(4.56, 4.37, 4.41); Calibrated: 2023-01-05
- Sensor-Surface: 1.4 mm
- Electronics: DAE4 Sn699; Calibrated: 2023-02-22
- Phantom: Twin-SAM V8.0 (30deg probe tilt); Serial: 1919; Section: Flat
- Measurement Software: 16.2.4.2524
- UID: CW

Pin=20.0dBm/Area Scan (40.0 mm x 80.0 mm): Measurement Grid: 10.0 mm x 10.0 mm
SAR (1g) = 6.91 W/kg; SAR (10g) = 1.96 W/kg;

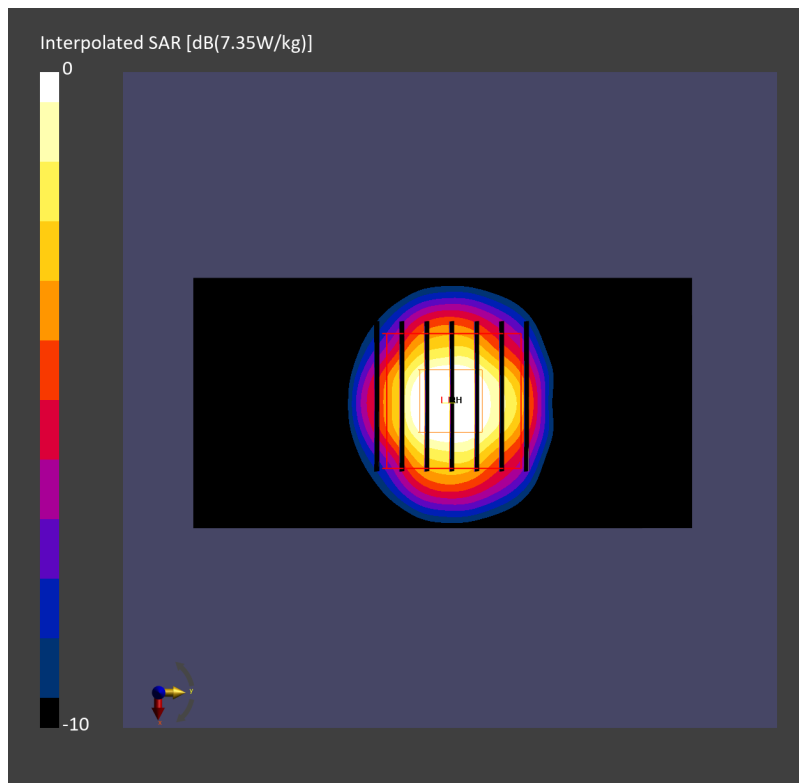
Pin=20.0dBm/Zoom Scan (22.0 mm x 22.0 mm x 22.0 mm): Measurement Grid: 4.0 mm x 4.0 mm x 1.4 mm

Power Drift = 0.02 dB

SAR (1g) = 7.35 W/kg; SAR (8g) = 2.45 W/kg; SAR (10g) = 2.11 W/kg

Smallest distance from peaks to all points 3 dB below = 7.2 mm

Ratio of SAR at M2 to SAR at M1 = 63.8 %



System Check_Head_5750MHz

DUT: D5GHzV2 - SN1171

Communication System: CW; Frequency: 5750.000 MHz; Duty Cycle: 1:1

Medium: HSL_5G_231016 Medium parameters used: $f=5750.000$ MHz; $\sigma=5.36$ S/m; $\epsilon_r=35.8$

Ambient Temperature: 23.5°C; Liquid Temperature: 22.5°C

DASY6 Configuration:

- Probe: EX3DV4 - SN7791; ConvF(4.44, 4.92, 4.4); Calibrated: 2023-02-22
- Sensor-Surface: 1.4 mm
- Electronics: DAE4 Sn1697; Calibrated: 2022-12-15
- Phantom: Twin-SAM V4.0 (30deg probe tilt); Serial: 1488; Section: Flat
- Measurement Software: 16.2.4.2524
- UID: CW

Pin=20.0dBm/Area Scan (40.0 mm x 80.0 mm): Measurement Grid: 10.0 mm x 10.0 mm

SAR (1g) = 7.49 W/kg; SAR (10g) = 2.15 W/kg;

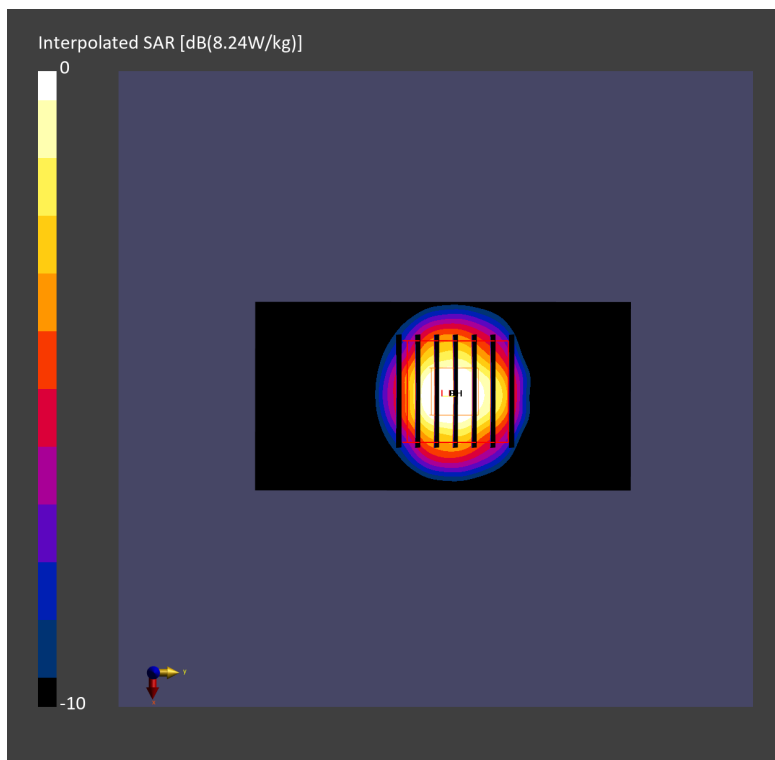
Pin=20.0dBm/Zoom Scan (22.0 mm x 22.0 mm x 22.0 mm): Measurement Grid: 4.0 mm x 4.0 mm x 1.4 mm

Power Drift = 0.01 dB

SAR (1g) = 8.24 W/kg; SAR (8g) = 2.74 W/kg; SAR (10g) = 2.36 W/kg

Smallest distance from peaks to all points 3 dB below = 7.2 mm

Ratio of SAR at M2 to SAR at M1 = 63.6 %



System Check_Head_5750MHz

DUT: D5GHzV2 - SN1171

Communication System: CW; Frequency: 5750.000 MHz; Duty Cycle: 1:1

Medium: HSL_5G_231017 Medium parameters used: $f = 5750.000$ MHz; $\sigma = 5.27$ S/m; $\epsilon_r = 35.1$

Ambient Temperature: 23.3°C; Liquid Temperature: 22.3°C

DASY6 Configuration:

- Probe: EX3DV4 - SN7785; ConvF(4.56, 4.37, 4.41); Calibrated: 2023-01-05
- Sensor-Surface: 1.4 mm
- Electronics: DAE4 Sn699; Calibrated: 2023-02-22
- Phantom: Twin-SAM V8.0 (30deg probe tilt); Serial: 1919; Section: Flat
- Measurement Software: 16.2.4.2524
- UID: CW

Pin=20.0dBm/Area Scan (40.0 mm x 80.0 mm): Measurement Grid: 10.0 mm x 10.0 mm
SAR (1g) = 6.75 W/kg; SAR (10g) = 1.93 W/kg;

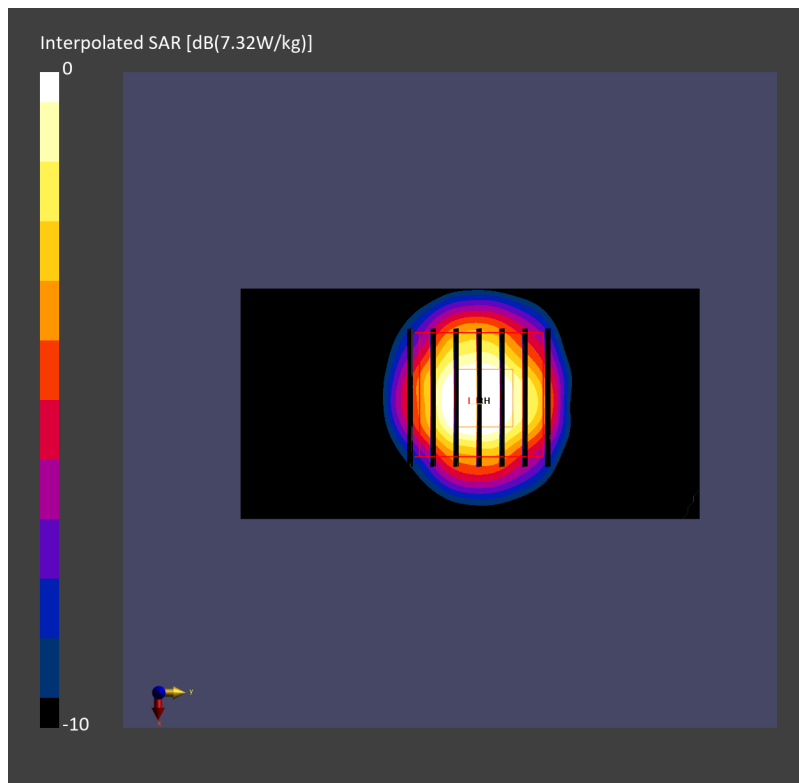
Pin=20.0dBm/Zoom Scan (22.0 mm x 22.0 mm x 22.0 mm): Measurement Grid: 4.0 mm x 4.0 mm x 1.4 mm

Power Drift = 0.05 dB

SAR (1g) = 7.32 W/kg; SAR (8g) = 2.42 W/kg; SAR (10g) = 2.08 W/kg

Smallest distance from peaks to all points 3 dB below = 7.4 mm

Ratio of SAR at M2 to SAR at M1 = 61.5 %



System Check_Head_5750MHz

DUT: D5GHzV2 - SN1171

Communication System: CW; Frequency: 5750.000 MHz; Duty Cycle: 1:1

Medium: HSL_5G_231018 Medium parameters used: $f = 5750.000$ MHz; $\sigma = 5.22$ S/m; $\epsilon_r = 36.1$

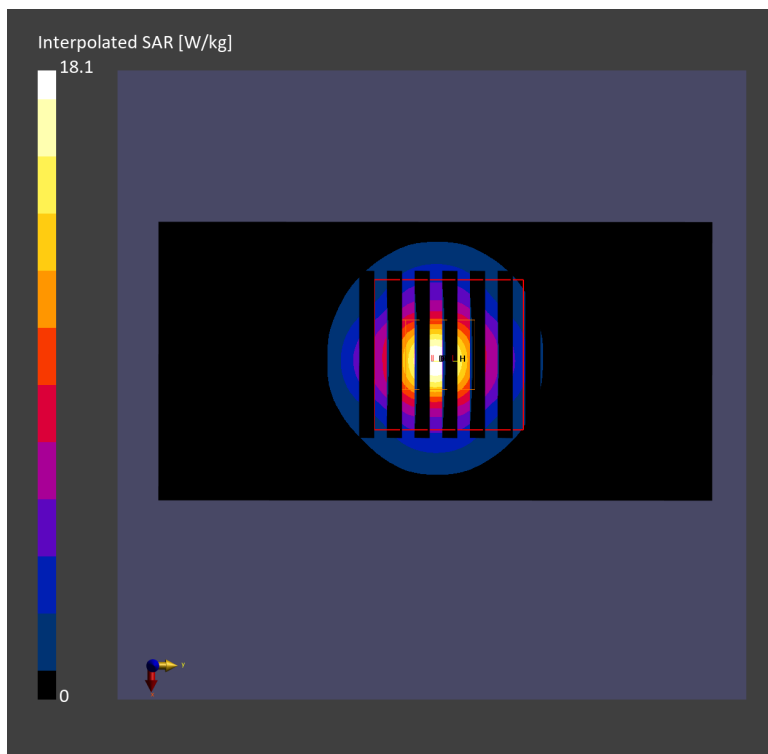
Ambient Temperature: 23.6°C; Liquid Temperature: 22.6°C

DASY8 Configuration:

- Probe: EX3DV4 - SN7692; ConvF(5.23, 5.12, 5.97); Calibrated: 2023-07-18
- Sensor-Surface: 1.4 mm
- Electronics: DAE4 Sn661; Calibrated: 2023-05-23
- Phantom: Twin-SAM V8.0 (30deg probe tilt); Serial: 2079; Section: Flat
- Measurement Software: 16.2.4.2524
- UID: CW

Pin=17.0dBm/Area Scan (40.0 mm x 80.0 mm): Measurement Grid: 10.0 mm x 10.0 mm
SAR (1g) = 3.63 W/kg; SAR (10g) = 0.961 W/kg;

Pin=17.0dBm/Zoom Scan (22.0 mm x 22.0 mm x 22.0 mm): Measurement Grid: 4.0 mm x 4.0 mm x 1.4 mm
Power Drift = -0.10 dB
SAR (1g) = 4.13 W/kg; SAR (8g) = 1.30 W/kg; SAR (10g) = 1.11 W/kg
Smallest distance from peaks to all points 3 dB below = 6.6 mm
Ratio of SAR at M2 to SAR at M1 = 59.7 %



System Check_Head_5750MHz

DUT: D5GHzV2 - SN1171

Communication System: CW; Frequency: 5750.000 MHz; Duty Cycle: 1:1

Medium: HSL_5G_231018 Medium parameters used: $f = 5750.000$ MHz; $\sigma = 5.15$ S/m; $\epsilon_r = 34.5$

Ambient Temperature: 23.8°C; Liquid Temperature: 22.8°C

DASY6 Configuration:

- Probe: EX3DV4 - SN7700; ConvF(5.24, 5.24, 5.24); Calibrated: 2023-01-24
- Sensor-Surface: 1.4 mm
- Electronics: DAE4 Sn1707; Calibrated: 2022-12-15
- Phantom: Twin-SAM V8.0 (30deg probe tilt); Serial: 2079_For Gap; Section: Flat
- Measurement Software: 16.2.4.2524
- UID: CW

Pin=17dBm/Area Scan (40.0 mm x 80.0 mm): Measurement Grid: 10.0 mm x 10.0 mm

SAR (1g) = 3.61 W/kg; SAR (10g) = 0.996 W/kg;

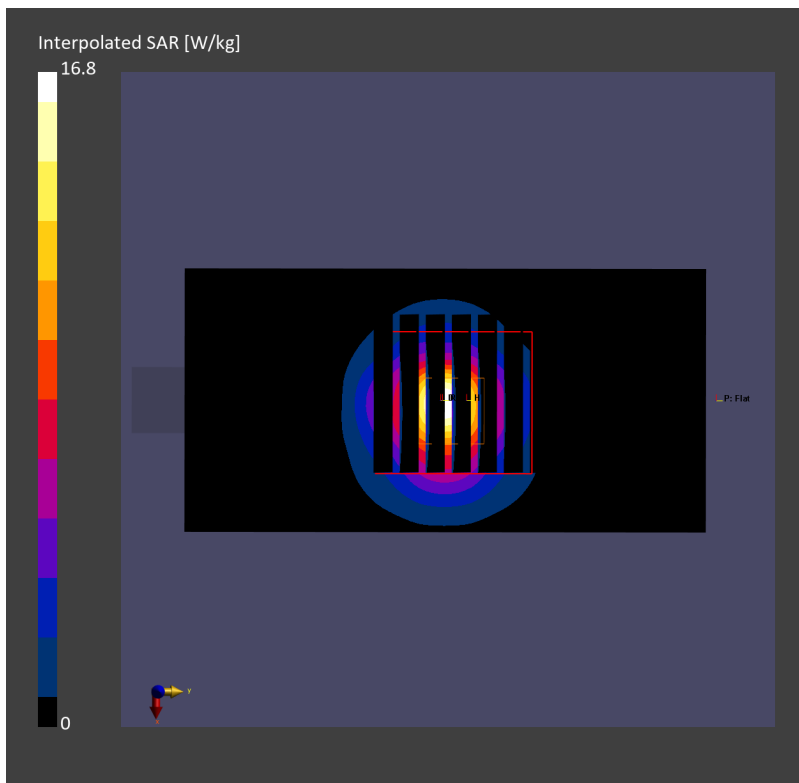
Pin=17dBm/Zoom Scan (22.0 mm x 22.0 mm x 22.0 mm): Measurement Grid: 4.0 mm x 4.0 mm x 1.4 mm

Power Drift = -0.00 dB

SAR (1g) = 4.04 W/kg; SAR (8g) = 1.27 W/kg; SAR (10g) = 1.08 W/kg

Smallest distance from peaks to all points 3 dB below = 6.9 mm

Ratio of SAR at M2 to SAR at M1 = 61.6 %



System Check_Head_5850MHz

DUT: D5GHzV2 - SN1006

Communication System: CW; Frequency: 5850.000 MHz; Duty Cycle: 1:1

Medium: HSL_5G_231017 Medium parameters used: $f = 5850.000$ MHz; $\sigma = 5.44$ S/m; $\epsilon_r = 35.5$

Ambient Temperature: 23.5°C; Liquid Temperature: 22.5°C

DASY6 Configuration:

- Probe: EX3DV4 - SN7625; ConvF(4.95, 4.95, 4.95); Calibrated: 2023-01-26
- Sensor-Surface: 1.4 mm
- Electronics: DAE4 Sn1697; Calibrated: 2022-12-15
- Phantom: Twin-SAM V4.0 (30deg probe tilt); Serial: 1488; Section: Flat
- Measurement Software: 16.2.4.2524
- UID: CW

Pin=17.0dBm/Area Scan (40.0 mm x 80.0 mm): Measurement Grid: 10.0 mm x 10.0 mm

SAR (1g) = 3.38 W/kg; SAR (10g) = 1.02 W/kg;

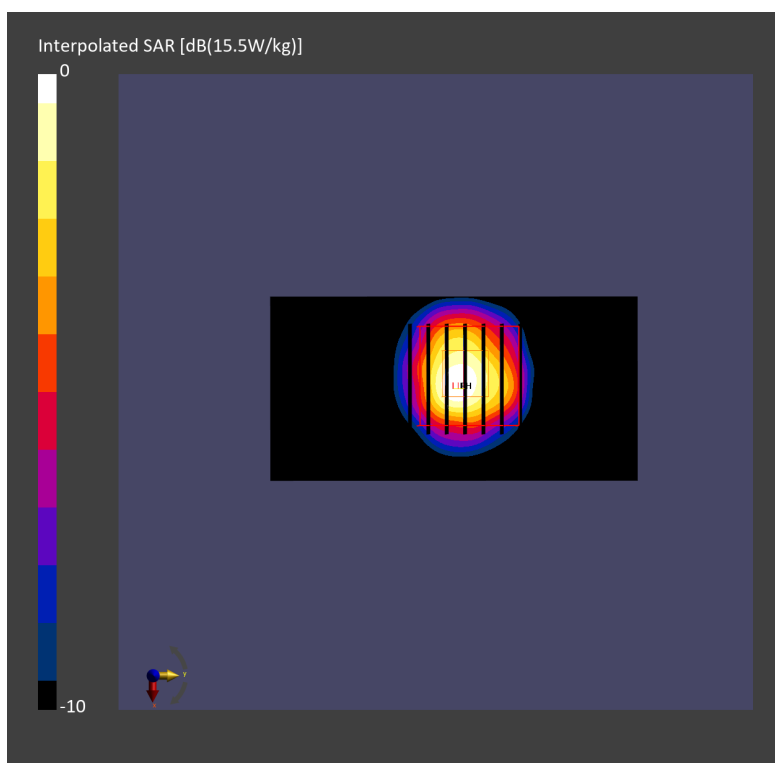
Pin=17.0dBm/Zoom Scan (22.0 mm x 22.0 mm x 22.0 mm): Measurement Grid: 4.0 mm x 4.0 mm x 1.4 mm

Power Drift = 0.01 dB

SAR (1g) = 3.93 W/kg; SAR (8g) = 1.39 W/kg; SAR (10g) = 1.20 W/kg

Smallest distance from peaks to all points 3 dB below = 7.6 mm

Ratio of SAR at M2 to SAR at M1 = 63.1 %



System Check_Head_5850MHz

DUT: D5GHzV2 - SN1171

Communication System: CW; Frequency: 5850.000 MHz; Duty Cycle: 1:1

Medium: HSL_5G_231018 Medium parameters used: $f = 5850.000$ MHz; $\sigma = 5.18$ S/m; $\epsilon_r = 36.0$

Ambient Temperature: 23.6°C; Liquid Temperature: 22.6°C

DASY6 Configuration:

- Probe: EX3DV4 - SN7625; ConvF(4.95, 4.95, 4.95); Calibrated: 2023-01-26
- Sensor-Surface: 1.4 mm
- Electronics: DAE4 Sn1697; Calibrated: 2022-12-15
- Phantom: Twin-SAM V4.0 (30deg probe tilt); Serial: 1488; Section: Flat
- Measurement Software: 16.2.4.2524
- UID: CW

Pin=17.0dBm/Area Scan (40.0 mm x 80.0 mm): Measurement Grid: 10.0 mm x 10.0 mm

SAR (1g) = 3.24 W/kg; SAR (10g) = 0.967 W/kg;

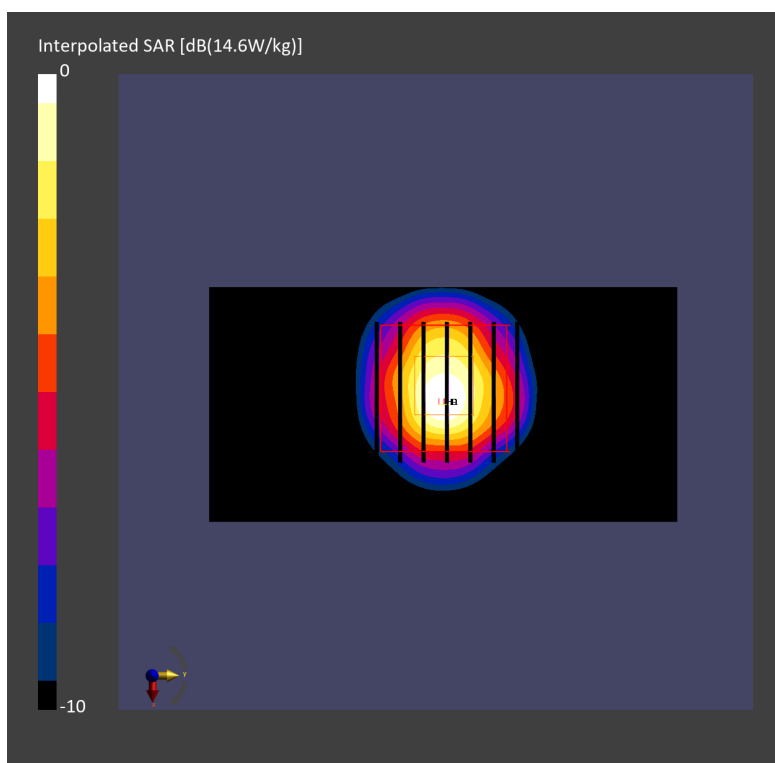
Pin=17.0dBm/Zoom Scan (22.0 mm x 22.0 mm x 22.0 mm): Measurement Grid: 4.0 mm x 4.0 mm x 1.4 mm

Power Drift = -0.04 dB

SAR (1g) = 3.78 W/kg; SAR (8g) = 1.36 W/kg; SAR (10g) = 1.18 W/kg

Smallest distance from peaks to all points 3 dB below = 7.6 mm

Ratio of SAR at M2 to SAR at M1 = 63.4 %



System Check_Head_6500MHz

DUT: D6.5GHzV2-1003

Communication System: CW; Frequency: 6500.000 MHz; Duty Cycle: 1:1

Medium: HSL_6G_231013 Medium parameters used: $f=6500.000$ MHz; $\sigma=6.31$ S/m; $\epsilon_r=35.2$

Ambient Temperature: 23.5°C; Liquid Temperature: 22.5°C

DASY6 Configuration:

- Probe: EX3DV4 - SN7791; ConvF(5.07, 5.47, 4.84); Calibrated: 2023-02-22
- Sensor-Surface: 1.4 mm
- Electronics: DAE4 Sn1697; Calibrated: 2022-12-15
- Phantom: Twin-SAM V4.0 (30deg probe tilt); Serial: 1488; Section: Flat
- Measurement Software: 16.2.4.2524
- UID: CW

Pin=20.0dBm/Area Scan (51.0 mm x 51.0 mm): Measurement Grid: 8.5 mm x 8.5 mm

SAR (1g) = 22.5 W/kg; SAR (10g) = 4.40 W/kg;

Pin=20.0dBm/Zoom Scan (23.8 mm x 23.8 mm x 22.0 mm): Measurement Grid: 3.4 mm x 3.4 mm x 1.4 mm

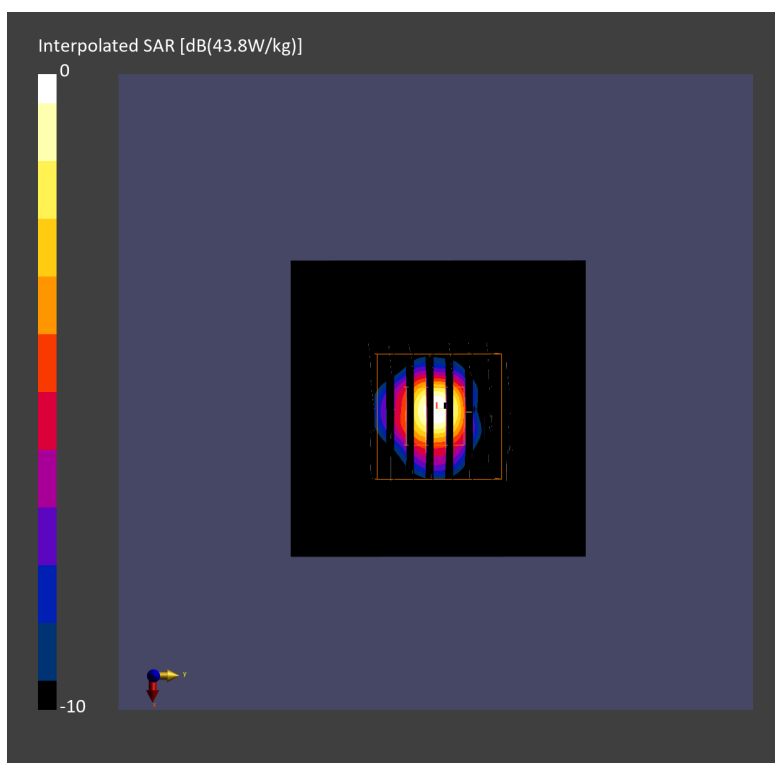
Power Drift = 0.01 dB

SAR (1g) = 27.4 W/kg; SAR (8g) = 6.10 W/kg; SAR (10g) = 5.00 W/kg

Smallest distance from peaks to all points 3 dB below = 4.8 mm

Ratio of SAR at M2 to SAR at M1 = 52.1 %

psAPD (1.0cm², sq) = 274 [W/m²]; psAPD (4.0cm², sq) = 122 [W/m²]



System Check_Head_6500MHz

DUT: D6.5GHzV2 - SN1003

Communication System: CW; Frequency: 6500.000 MHz; Duty Cycle: 1:1

Medium: HSL_6G_231014 Medium parameters used: $f = 6500.000$ MHz; $\sigma = 5.97$ S/m; $\epsilon_r = 34.2$

Ambient Temperature: 23.5°C; Liquid Temperature: 22.5°C

DASY6 Configuration:

- Probe: EX3DV4 - SN7791; ConvF(5.07, 5.47, 4.84); Calibrated: 2023-02-22
- Sensor-Surface: 1.4 mm
- Electronics: DAE4 Sn1697; Calibrated: 2022-12-15
- Phantom: Twin-SAM V4.0 (30deg probe tilt); Serial: 1488; Section: Flat
- Measurement Software: 16.2.4.2524
- UID: CW

Pin=20.0dBm/Area Scan (51.0 mm x 85.0 mm): Measurement Grid: 8.5 mm x 8.5 mm

SAR (1g) = 24.4 W/kg; SAR (10g) = 5.34 W/kg;

Pin=20.0dBm/Zoom Scan (23.8 mm x 23.8 mm x 22.0 mm): Measurement Grid: 3.4 mm x 3.4 mm x 1.4 mm

Power Drift = 0.02 dB

SAR (1g) = 32.1 W/kg; SAR (8g) = 7.22 W/kg; SAR (10g) = 5.94 W/kg

Smallest distance from peaks to all points 3 dB below = 4.4 mm

Ratio of SAR at M2 to SAR at M1 = 50.6 %

psAPD (1.0cm², sq) = 321 [W/m²]; psAPD (4.0cm², sq) = 144 [W/m²]

