

DASY8 Module WPT Measurement Report

Device under test

Info:
1_Back_0mm

Tool info

DASY software version:
DASY8 Module WPT 2.4.0.4346

Probe model, serial no. and configuration date:
MAGPy-8H3D+E3Dv2, WP000211, 2023/05/09

Software version:
2.0.49, backend: 2.2.3

Scan info

Center location:
x: 58.96 mm, y: -179.87 mm, z: 287.57 mm

Dimensions:
x: 169.0 mm, y: 169.0 mm, z: 36.7 mm

Resolution:
x: 7.33 mm, y: 7.33 mm, z: 7.33 mm

Completed on:
2024/03/09

Measurement results

Maximum H-field [RMS]:

MAGNITUDE: 1.11 A/m

x: 332.37 mA/m, y: 115.56 mA/m, z: 1.05 A/m

Maximum H-field location relative to DUT:

x: 18.33 mm, y: 18.33 mm, z: 8.50 mm

Maximum E-field [RMS]:

MAGNITUDE: 18.60 V/m

x: 1.32 V/m, y: 226.21 mV/m, z: 18.55 V/m

Maximum E-field location relative to DUT:

x: 14.67 mm, y: -73.33 mm, z: 1.00 mm

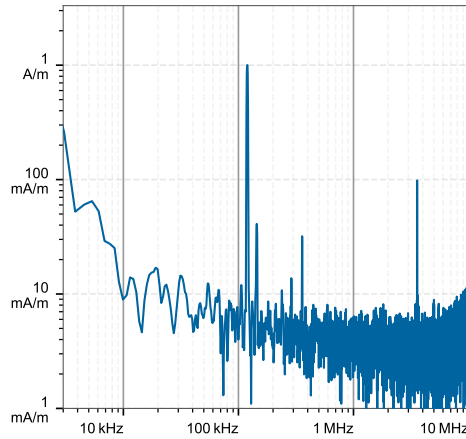
Distance to -20.0 dB boundary:

39.49 mm

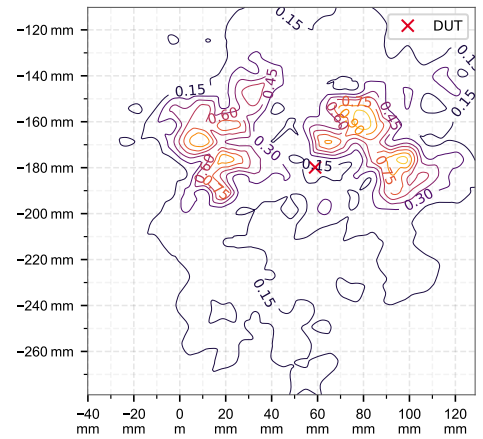
Offset relative to DUT:

x: 0.00 m, y: 0.00 m, z: 1.00 mm

H-field magnitude [RMS] at maximum location



H-field magnitude [RMS] at lowest plane



Incident fields, and induced quantities in the anatomical model

Distance [mm]	Peak incident fields [RMS]		Peak E_{ind} [V/m, RMS]			Peak J_{ind} [A/m ² , RMS]	psSAR [mW/kg]		H-field extent
	H_{inc} [A/m]	E_{inc} [V/m]	Cube avg.	Local	Line avg.	Surface avg.	1g avg.	10g avg.	-20 dB radius [mm]
0.0	2.0	18.6	0.00926	0.00959	0.00952	0.0056	0.0000308	0.0000236	64.6

DASY8 Module WPT Measurement Report

Device under test

Info:
2_Right Side_0mm

Tool info

DASY software version:
DASY8 Module WPT 2.4.0.4346

Probe model, serial no. and configuration date:
MAGPy-8H3D+E3Dv2, WP000211, 2023/05/09

Software version:
2.0.49, backend: 2.2.3

Scan info

Center location:
x: 88.64 mm, y: -159.81 mm, z: 333.96 mm

Dimensions:
x: 169.0 mm, y: 169.0 mm, z: 36.7 mm

Resolution:
x: 7.33 mm, y: 7.33 mm, z: 7.33 mm

Completed on:
2024/03/09

Measurement results

Maximum H-field [RMS]:

MAGNITUDE: 2.22 A/m

x: 756.96 mA/m, y: 399.15 mA/m, z: 2.05 A/m

Maximum H-field location relative to DUT:

x: -11.00 mm, y: -11.00 mm, z: 8.50 mm

Maximum E-field [RMS]:

MAGNITUDE: 6.69 V/m

x: 902.19 mV/m, y: 822.19 mV/m, z: 6.58 V/m

Maximum E-field location relative to DUT:

x: -29.33 mm, y: -29.33 mm, z: 1.00 mm

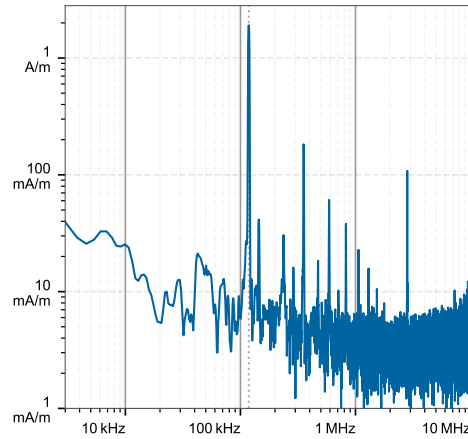
Distance to -20.0 dB boundary:

23.19 mm

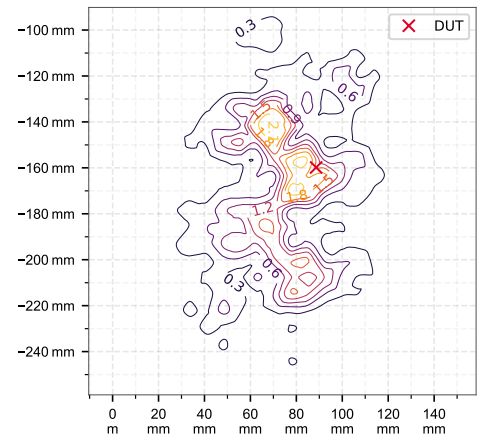
Offset relative to DUT:

x: 0.00 m, y: 0.00 m, z: 1.00 mm

H-field magnitude [RMS] at maximum location



H-field magnitude [RMS] at lowest plane



Incident fields, and induced quantities in the anatomical model

Distance [mm]	Peak incident fields [RMS]		Peak E_{ind} [V/m, RMS]			Peak J_{ind} [A/m ² , RMS]	psSAR [mW/kg]		H-field extent
	H_{inc} [A/m]	E_{inc} [V/m]	Cube avg.	Local	Line avg.	Surface avg.	1g avg.	10g avg.	-20 dB radius [mm]
0.0	4.05	6.69	0.0158	0.0163	0.0163	0.01	0.0000993	0.000052	47.1