

# System Performance Check Report for D5GHzV2 - SN1168

## Exposure Conditions

Frequency [MHz]   Channel Number	5750.000   0	TSL Permittivity	36.3
Group   UID	CW   0--	TSL Conductivity [S/m]	5.11
Conversion Factor	5.16	Phantom Section   TSL	Flat   HSL

## Hardware Setup

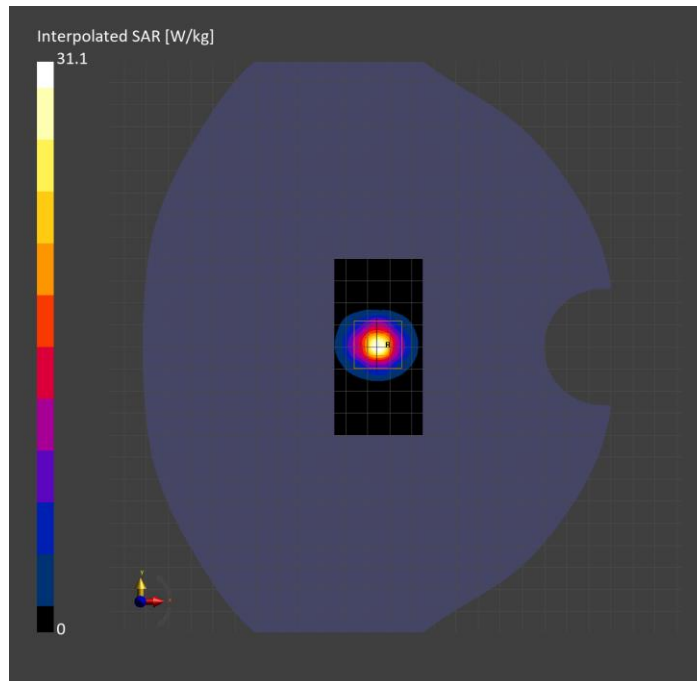
Probe   Calibration Date	EX3DV4 - SN7657   2023-05-30	Phantom	Twin-SAM V8.0 (30deg probe tilt)
DAE   Calibration Date	DAE4 Sn1357   2023-01-27	TSL Type	HBBL-600-10000
Software Version	16.2.4.2524		

## Scans Setup

	Area Scan	Zoom Scan
Grid Extents [mm]	40.0 x 80.0	22.0 x 22.0 x 22.0
Grid Steps [mm]	10.0 x 10.0	4.0 x 4.0 x 1.4
Sensor Surface [mm]	3.0	1.4
Graded Grid	N/A	Yes
M2/M1 [%]		60.8
Dist 3dB Peak [mm]		7.2

## Measurement Results

	Area Scan	Zoom Scan
psSAR1g [W/Kg]	6.68	7.30
psSAR10g [W/Kg]	1.89	2.08
Power Drift [dB]	N/A	-0.05



# System Performance Check Report for D5GHzV2 - SN1168

## Exposure Conditions

Frequency [MHz]   Channel Number	5250.000   0	TSL Permittivity	36.2
Group   UID	CW   0--	TSL Conductivity [S/m]	4.53
Conversion Factor	5.79	Phantom Section   TSL	Flat   HSL

## Hardware Setup

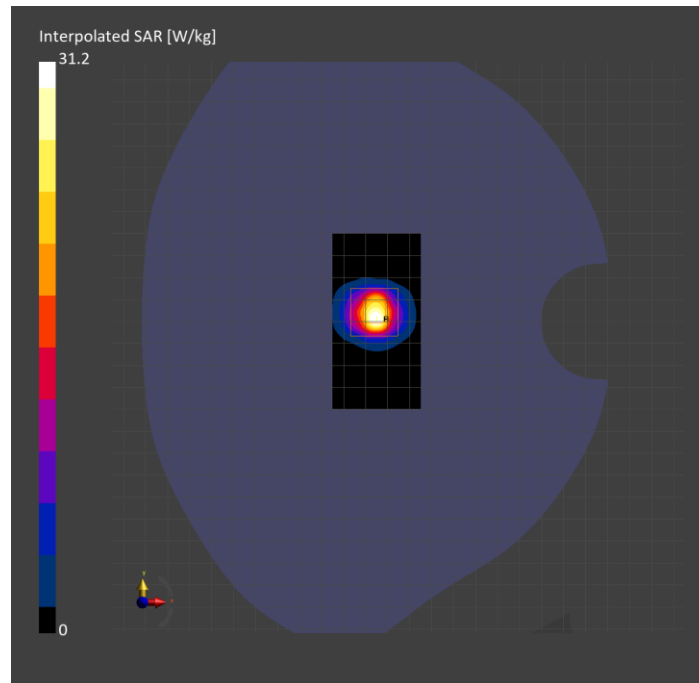
Probe   Calibration Date	EX3DV4 - SN7657   2023-05-30	Phantom	Twin-SAM V8.0 (30deg probe tilt)
DAE   Calibration Date	DAE4 Sn1799   2023-04-04	TSL Type	HBBL-600-10000
Software Version	16.2.4.2524		

## Scans Setup

	Area Scan	Zoom Scan
Grid Extents [mm]	40.0 x 80.0	22.0 x 22.0 x 22.0
Grid Steps [mm]	10.0 x 10.0	4.0 x 4.0 x 1.4
Sensor Surface [mm]	3.0	1.4
Graded Grid	N/A	Yes
M2/M1 [%]		65.5
Dist 3dB Peak [mm]		7.4

## Measurement Results

	Area Scan	Zoom Scan
psSAR1g [W/Kg]	7.37	8.32
psSAR10g [W/Kg]	2.23	2.43
Power Drift [dB]	N/A	0.02



# System Performance Check Report for D5GHzV2 - SN1168

## Exposure Conditions

Frequency [MHz]   Channel Number	5600.000   0	TSL Permittivity	35.5
Group   UID	CW   0--	TSL Conductivity [S/m]	4.92
Conversion Factor	4.93	Phantom Section   TSL	Flat   HSL

## Hardware Setup

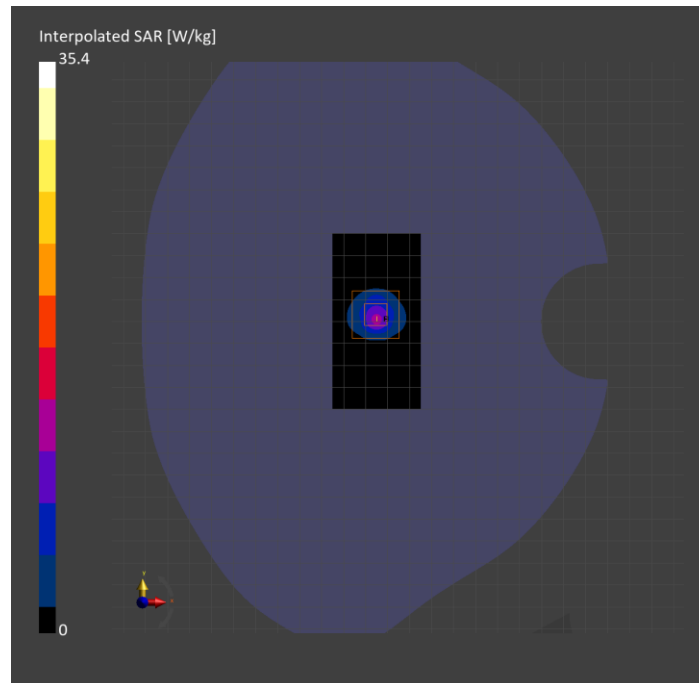
Probe   Calibration Date	EX3DV4 - SN7657   2023-05-30	Phantom	Twin-SAM V8.0 (30deg probe tilt)
DAE   Calibration Date	DAE4 Sn1799   2023-04-04	TSL Type	HBBL-600-10000
Software Version	16.2.4.2524		

## Scans Setup

	Area Scan	Zoom Scan
Grid Extents [mm]	40.0 x 80.0	22.0 x 22.0 x 22.0
Grid Steps [mm]	10.0 x 10.0	4.0 x 4.0 x 1.4
Sensor Surface [mm]	3.0	1.4
Graded Grid	N/A	Yes
M2/M1 [%]		64.1
Dist 3dB Peak [mm]		7.3

## Measurement Results

	Area Scan	Zoom Scan
psSAR1g [W/Kg]	8.24	8.95
psSAR10g [W/Kg]	2.38	2.55
Power Drift [dB]	N/A	-0.01



# System Performance Check Report for D2450V2 - SN899

## Exposure Conditions

Frequency [MHz]   Channel Number	2450.000   0	TSL Permittivity	39.9
Group   UID	CW   0--	TSL Conductivity [S/m]	1.74
Conversion Factor	7.87	Phantom Section   TSL	Flat   HSL

## Hardware Setup

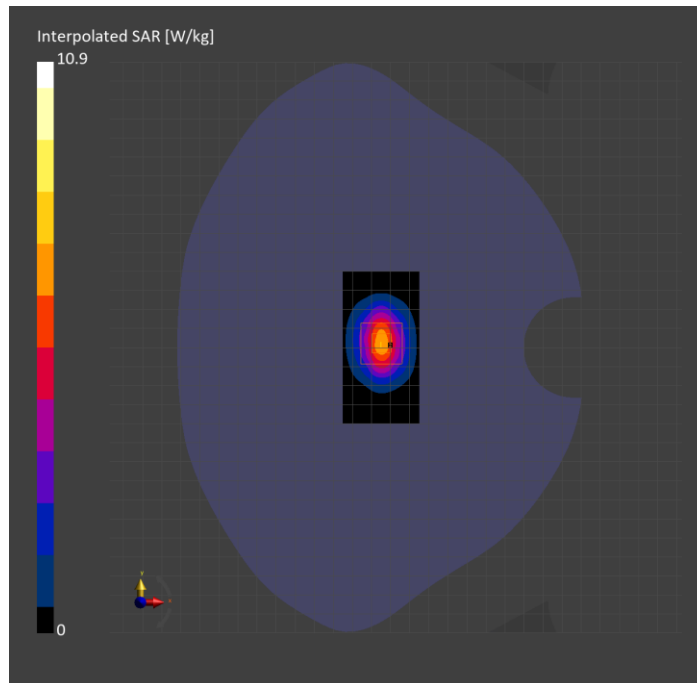
Probe   Calibration Date	EX3DV4 - SN7657   2023-05-30	Phantom	Twin-SAM V8.0 (30deg probe tilt)
DAE   Calibration Date	DAE4 Sn1799   2023-04-04	TSL Type	HBBL-600-10000
Software Version	16.2.4.2524		

## Scans Setup

	Area Scan	Zoom Scan
Grid Extents [mm]	40.0 x 80.0	30.0 x 30.0 x 30.0
Grid Steps [mm]	10.0 x 10.0	5.0 x 5.0 x 1.5
Sensor Surface [mm]	3.0	1.4
Graded Grid	N/A	Yes
M2/M1 [%]		81.1
Dist 3dB Peak [mm]		9.0

## Measurement Results

	Area Scan	Zoom Scan
psSAR1g [W/Kg]	5.46	5.49
psSAR10g [W/Kg]	2.53	2.63
Power Drift [dB]	N/A	0.01



# System Performance Check Report for D3700V2 - SN1039

## Exposure Conditions

Frequency [MHz]   Channel Number	3700.000   0	TSL Permittivity	36.4
Group   UID	CW   0--	TSL Conductivity [S/m]	3.15
Conversion Factor	6.89	Phantom Section   TSL	Flat   HSL

## Hardware Setup

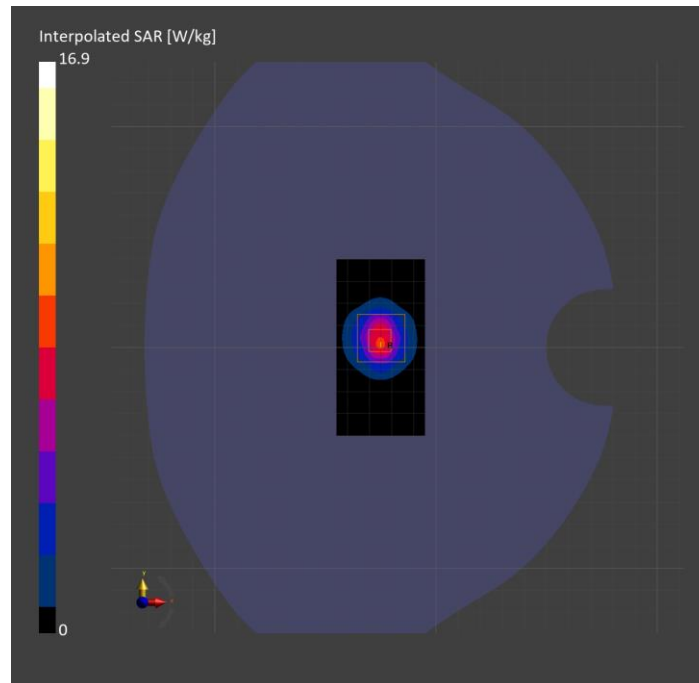
Probe   Calibration Date	EX3DV4 - SN7657   2023-05-30	Phantom	Twin-SAM V8.0 (30deg probe tilt)
DAE   Calibration Date	DAE4 Sn1799   2023-04-04	TSL Type	HBBL-600-10000
Software Version	16.2.4.2524		

## Scans Setup

	Area Scan	Zoom Scan
Grid Extents [mm]	40.0 x 80.0	28.0 x 28.0 x 28.0
Grid Steps [mm]	10.0 x 10.0	5.0 x 5.0 x 1.4
Sensor Surface [mm]	3.0	1.4
Graded Grid	N/A	Yes
M2/M1 [%]		74.8
Dist 3dB Peak [mm]		8.0

## Measurement Results

	Area Scan	Zoom Scan
psSAR1g [W/Kg]	6.27	6.33
psSAR10g [W/Kg]	2.32	2.35
Power Drift [dB]	N/A	-0.10



# System Performance Check Report for D2450V2 - SN748

## Exposure Conditions

Frequency [MHz]   Channel Number	2450.000   0	TSL Permittivity	41.1
Group   UID	CW   0--	TSL Conductivity [S/m]	1.74
Conversion Factor	7.87	Phantom Section   TSL	Flat   HSL

## Hardware Setup

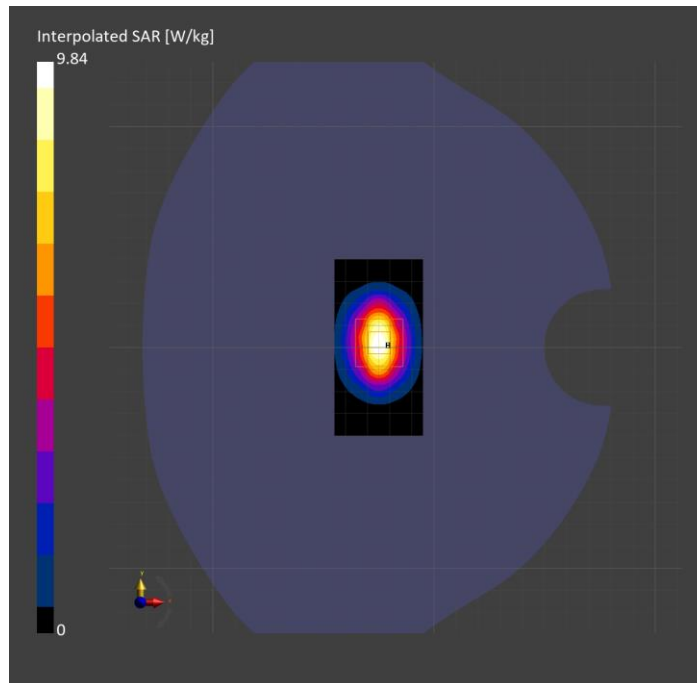
Probe   Calibration Date	EX3DV4 - SN7657   2023-05-30	Phantom	Twin-SAM V8.0 (30deg probe tilt)
DAE   Calibration Date	DAE4 Sn1799   2023-04-04	TSL Type	HBBL-600-10000
Software Version	16.2.4.2524		

## Scans Setup

	Area Scan	Zoom Scan
Grid Extents [mm]	40.0 x 80.0	30.0 x 30.0 x 30.0
Grid Steps [mm]	10.0 x 10.0	5.0 x 5.0 x 1.5
Sensor Surface [mm]	3.0	1.4
Graded Grid	N/A	Yes
M2/M1 [%]		81.6
Dist 3dB Peak [mm]		9.0

## Measurement Results

	Area Scan	Zoom Scan
psSAR1g [W/Kg]	4.93	<b>4.97</b>
psSAR10g [W/Kg]	2.25	<b>2.36</b>
Power Drift [dB]	N/A	-0.04



# System Performance Check Report for D750V3 - SN1019

## Exposure Conditions

Frequency [MHz]   Channel Number	750.000   0	TSL Permittivity	42.4
Group   UID	CW   0--	TSL Conductivity [S/m]	0.854
Conversion Factor	9.87	Phantom Section   TSL	Flat   HSL

## Hardware Setup

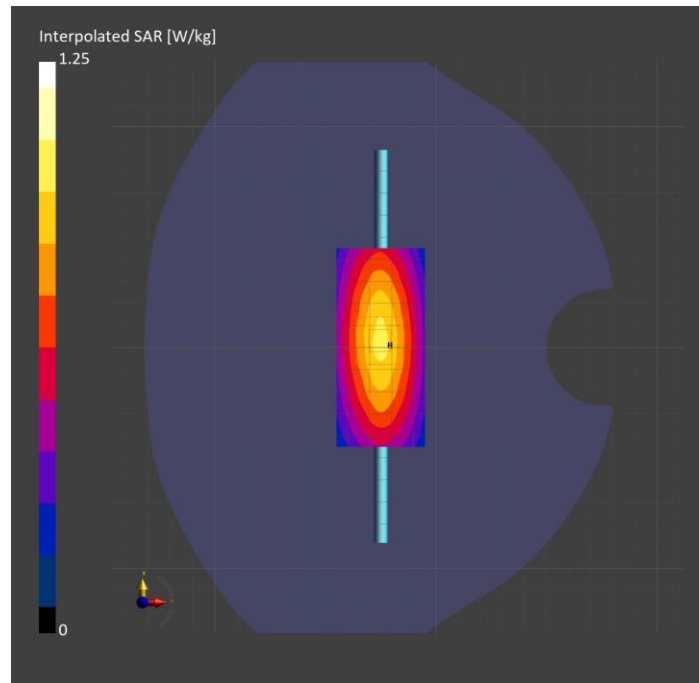
Probe   Calibration Date	EX3DV4 - SN7657   2023-05-30	Phantom	Twin-SAM V8.0 (30deg probe tilt)
DAE   Calibration Date	DAE4 Sn1545   2024-02-09	TSL Type	HBBL-600-10000
Software Version	16.2.4.2524		

## Scans Setup

	Area Scan	Zoom Scan
Grid Extents [mm]	40.0 x 90.0	30.0 x 30.0 x 30.0
Grid Steps [mm]	10.0 x 15.0	6.0 x 6.0 x 1.5
Sensor Surface [mm]	3.0	1.4
Graded Grid	N/A	Yes
M2/M1 [%]		89.7
Dist 3dB Peak [mm]		> 15.0

## Measurement Results

	Area Scan	Zoom Scan
psSAR1g [W/Kg]	0.846	<b>0.857</b>
psSAR10g [W/Kg]	0.563	<b>0.569</b>
Power Drift [dB]	N/A	-0.10



# System Performance Check Report for D835V2 - SN4d002

## Exposure Conditions

Frequency [MHz]   Channel Number	835.000   0	TSL Permittivity	42.2
Group   UID	CW   0--	TSL Conductivity [S/m]	0.882
Conversion Factor	9.33	Phantom Section   TSL	Flat   HSL

## Hardware Setup

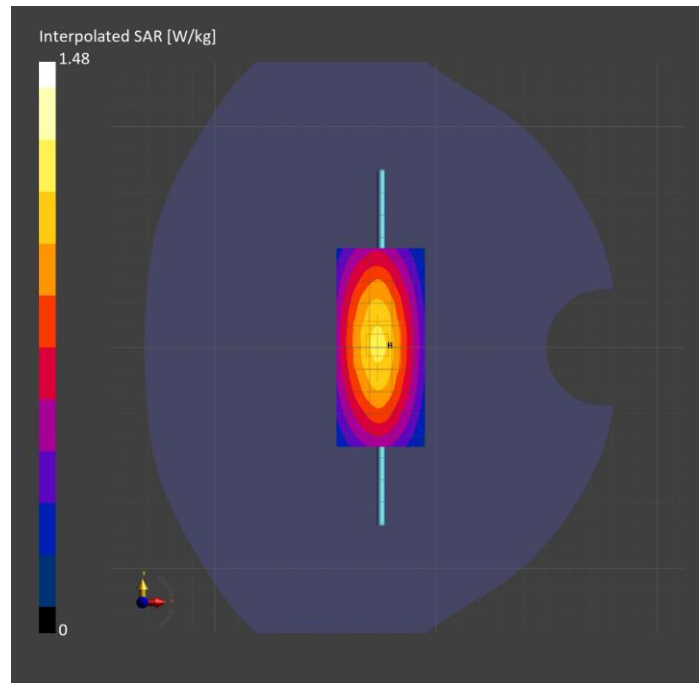
Probe   Calibration Date	EX3DV4 - SN7657   2023-05-30	Phantom	Twin-SAM V8.0 (30deg probe tilt)
DAE   Calibration Date	DAE4 Sn1545   2024-02-09	TSL Type	HBBL-600-10000
Software Version	16.2.4.2524		

## Scans Setup

	Area Scan	Zoom Scan
Grid Extents [mm]	40.0 x 90.0	30.0 x 30.0 x 30.0
Grid Steps [mm]	10.0 x 15.0	6.0 x 6.0 x 1.5
Sensor Surface [mm]	3.0	1.4
Graded Grid	N/A	Yes
M2/M1 [%]		89.8
Dist 3dB Peak [mm]		15.8

## Measurement Results

	Area Scan	Zoom Scan
psSAR1g [W/Kg]	0.994	<b>1.01</b>
psSAR10g [W/Kg]	0.656	<b>0.667</b>
Power Drift [dB]	N/A	-0.08





# System Performance Check Report for D3500V2 - SN1060

## Exposure Conditions

Frequency [MHz]   Channel Number	3500.000   0	TSL Permittivity	40.1
Group   UID	CW   0--	TSL Conductivity [S/m]	2.66
Conversion Factor	6.96	Phantom Section   TSL	Flat   HSL

## Hardware Setup

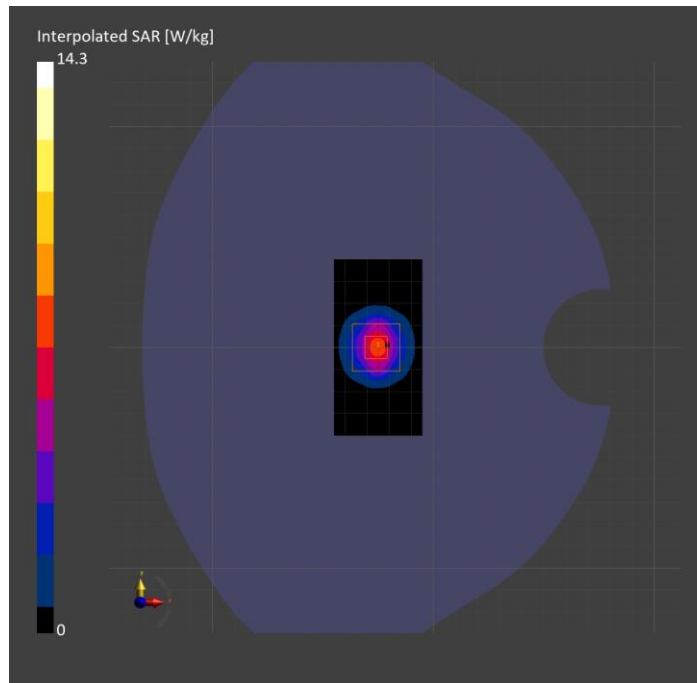
Probe   Calibration Date	EX3DV4 - SN7657   2023-05-30	Phantom	Twin-SAM V8.0 (30deg probe tilt)
DAE   Calibration Date	DAE4 Sn1545   2024-02-09	TSL Type	HBBL-600-10000
Software Version	16.2.4.2524		

## Scans Setup

	Area Scan	Zoom Scan
Grid Extents [mm]	40.0 x 80.0	28.0 x 28.0 x 28.0
Grid Steps [mm]	10.0 x 10.0	5.0 x 5.0 x 1.4
Sensor Surface [mm]	3.0	1.4
Graded Grid	N/A	Yes
M2/M1 [%]		78.1
Dist 3dB Peak [mm]		8.0

## Measurement Results

	Area Scan	Zoom Scan
psSAR1g [W/Kg]	5.74	5.97
psSAR10g [W/Kg]	2.17	2.33
Power Drift [dB]	N/A	-0.02



# System Performance Check Report for D3900V2 - SN1102

## Exposure Conditions

Frequency [MHz]   Channel Number	3900.000   0	TSL Permittivity	39.5
Group   UID	CW   0--	TSL Conductivity [S/m]	3.04
Conversion Factor	6.79	Phantom Section   TSL	Flat   HSL

## Hardware Setup

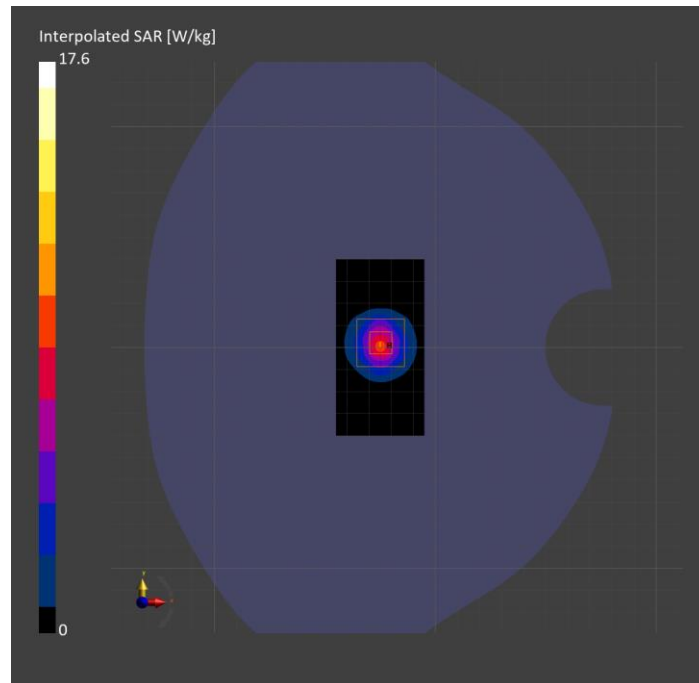
Probe   Calibration Date	EX3DV4 - SN7657   2023-05-30	Phantom	Twin-SAM V8.0 (30deg probe tilt)
DAE   Calibration Date	DAE4 Sn1545   2024-02-09	TSL Type	HBBL-600-10000
Software Version	16.2.4.2524		

## Scans Setup

	Area Scan	Zoom Scan
Grid Extents [mm]	40.0 x 80.0	28.0 x 28.0 x 28.0
Grid Steps [mm]	10.0 x 10.0	5.0 x 5.0 x 1.4
Sensor Surface [mm]	3.0	1.4
Graded Grid	N/A	Yes
M2/M1 [%]		75.7
Dist 3dB Peak [mm]		8.0

## Measurement Results

	Area Scan	Zoom Scan
psSAR1g [W/Kg]	6.29	<b>6.61</b>
psSAR10g [W/Kg]	2.20	<b>2.37</b>
Power Drift [dB]	N/A	-0.05



# System Performance Check Report for D5GHzV2 - SN1168

## Exposure Conditions

Frequency [MHz]   Channel Number	5850.000   0	TSL Permittivity	38.1
Group   UID	CW   0--	TSL Conductivity [S/m]	5.52
Conversion Factor	5.16	Phantom Section   TSL	Flat   HSL

## Hardware Setup

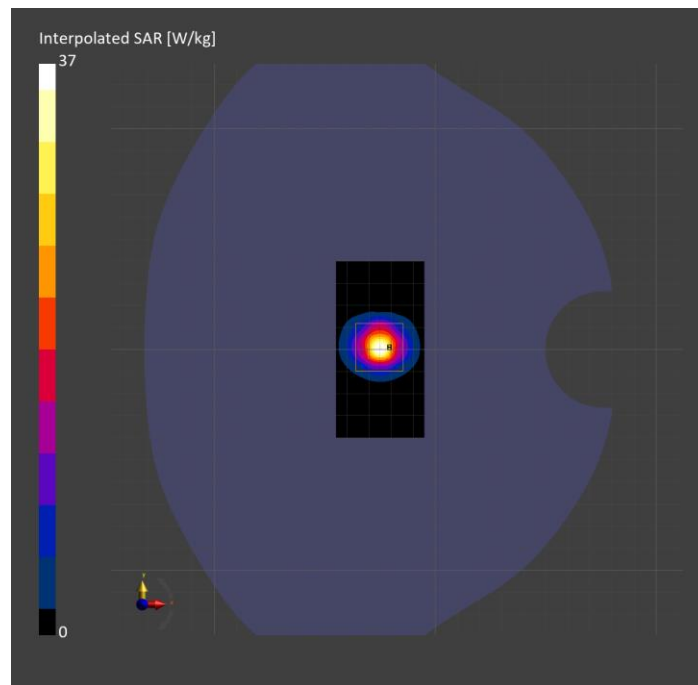
Probe   Calibration Date	EX3DV4 - SN7657   2023-05-30	Phantom	Twin-SAM V8.0 (30deg probe tilt)
DAE   Calibration Date	DAE4 Sn1545   2024-02-09	TSL Type	HBBL-600-10000
Software Version	16.2.4.2524		

## Scans Setup

	Area Scan	Zoom Scan
Grid Extents [mm]	40.0 x 80.0	22.0 x 22.0 x 22.0
Grid Steps [mm]	10.0 x 10.0	4.0 x 4.0 x 1.4
Sensor Surface [mm]	3.0	1.4
Graded Grid	N/A	Yes
M2/M1 [%]		60.3
Dist 3dB Peak [mm]		7.6

## Measurement Results

	Area Scan	Zoom Scan
psSAR1g [W/Kg]	8.11	<b>8.48</b>
psSAR10g [W/Kg]	2.28	<b>2.39</b>
Power Drift [dB]	N/A	0.00



# System Performance Check Report for D5GHzV2 - SN1168

## Exposure Conditions

Frequency [MHz]   Channel Number	5750.000   0	TSL Permittivity	35.2
Group   UID	CW   0--	TSL Conductivity [S/m]	5.18
Conversion Factor	5.04	Phantom Section   TSL	Flat   HSL

## Hardware Setup

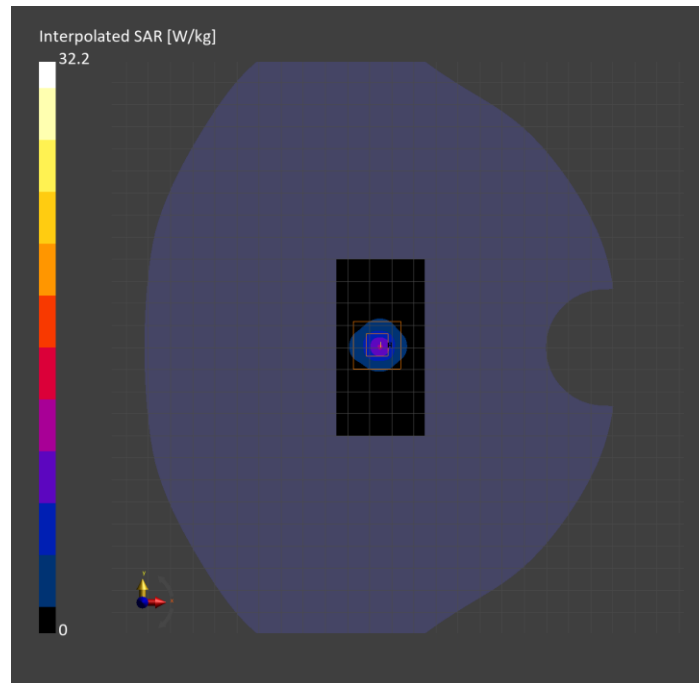
Probe   Calibration Date	EX3DV4 - SN7356   2023-03-17	Phantom	Twin-SAM V8.0 (30deg probe tilt)
DAE   Calibration Date	DAE4 Sn1674   2023-05-11	TSL Type	HBBL-600-10000
Software Version	16.2.4.2524		

## Scans Setup

	Area Scan	Zoom Scan
Grid Extents [mm]	40.0 x 80.0	22.0 x 22.0 x 22.0
Grid Steps [mm]	10.0 x 10.0	4.0 x 4.0 x 1.4
Sensor Surface [mm]	3.0	1.4
Graded Grid	N/A	Yes
M2/M1 [%]		59.4
Dist 3dB Peak [mm]		7.3

## Measurement Results

	Area Scan	Zoom Scan
psSAR1g [W/Kg]	6.85	7.19
psSAR10g [W/Kg]	1.93	2.02
Power Drift [dB]	N/A	-0.04



# System Performance Check Report for D5GHzV2 - SN1003

## Exposure Conditions

Frequency [MHz]   Channel Number	5250.000   0	TSL Permittivity	35.0
Group   UID	CW   0--	TSL Conductivity [S/m]	4.66
Conversion Factor	5.58	Phantom Section   TSL	Flat   HSL

## Hardware Setup

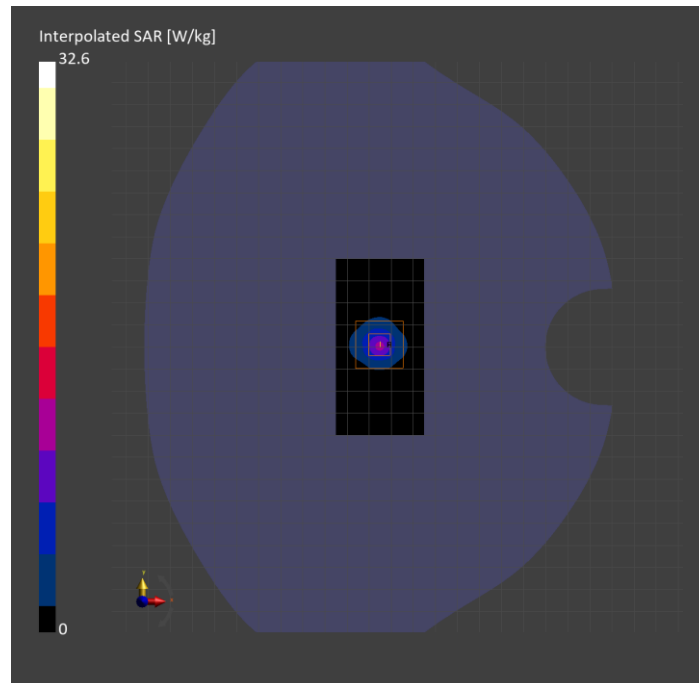
Probe   Calibration Date	EX3DV4 - SN7356   2023-03-17	Phantom	Twin-SAM V8.0 (30deg probe tilt)
DAE   Calibration Date	DAE4 Sn1674   2023-05-11	TSL Type	HBBL-600-10000
Software Version	16.2.4.2524		

## Scans Setup

	Area Scan	Zoom Scan
Grid Extents [mm]	40.0 x 80.0	22.0 x 22.0 x 22.0
Grid Steps [mm]	10.0 x 10.0	4.0 x 4.0 x 1.4
Sensor Surface [mm]	3.0	1.4
Graded Grid	N/A	Yes
M2/M1 [%]		62.3
Dist 3dB Peak [mm]		7.2

## Measurement Results

	Area Scan	Zoom Scan
psSAR1g [W/Kg]	7.09	<b>7.88</b>
psSAR10g [W/Kg]	2.03	<b>2.24</b>
Power Drift [dB]	N/A	0.04



# System Performance Check Report for D5GHzV2 - SN1003

## Exposure Conditions

Frequency [MHz]   Channel Number	5600.000   0	TSL Permittivity	36.3
Group   UID	CW   0--	TSL Conductivity [S/m]	5.01
Conversion Factor	4.98	Phantom Section   TSL	Flat   HSL

## Hardware Setup

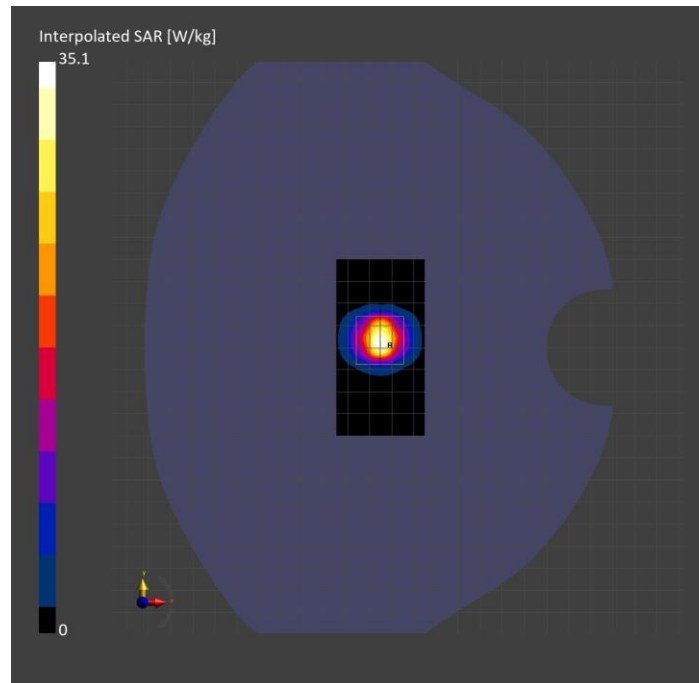
Probe   Calibration Date	EX3DV4 - SN7356   2023-03-17	Phantom	Twin-SAM V8.0 (30deg probe tilt)
DAE   Calibration Date	DAE4 Sn1674   2023-05-11	TSL Type	HBBL-600-10000
Software Version	16.2.4.2524		

## Scans Setup

	Area Scan	Zoom Scan
Grid Extents [mm]	40.0 x 80.0	22.0 x 22.0 x 22.0
Grid Steps [mm]	10.0 x 10.0	4.0 x 4.0 x 1.4
Sensor Surface [mm]	3.0	1.4
Graded Grid	N/A	Yes
M2/M1 [%]		64.6
Dist 3dB Peak [mm]		7.6

## Measurement Results

	Area Scan	Zoom Scan
psSAR1g [W/Kg]	8.13	8.95
psSAR10g [W/Kg]	2.42	2.56
Power Drift [dB]	N/A	0.01



# System Performance Check Report for D5GHzV2 - SN1003

## Exposure Conditions

Frequency [MHz]   Channel Number	5750.000   0	TSL Permittivity	36.1
Group   UID	CW   0--	TSL Conductivity [S/m]	5.20
Conversion Factor	5.04	Phantom Section   TSL	Flat   HSL

## Hardware Setup

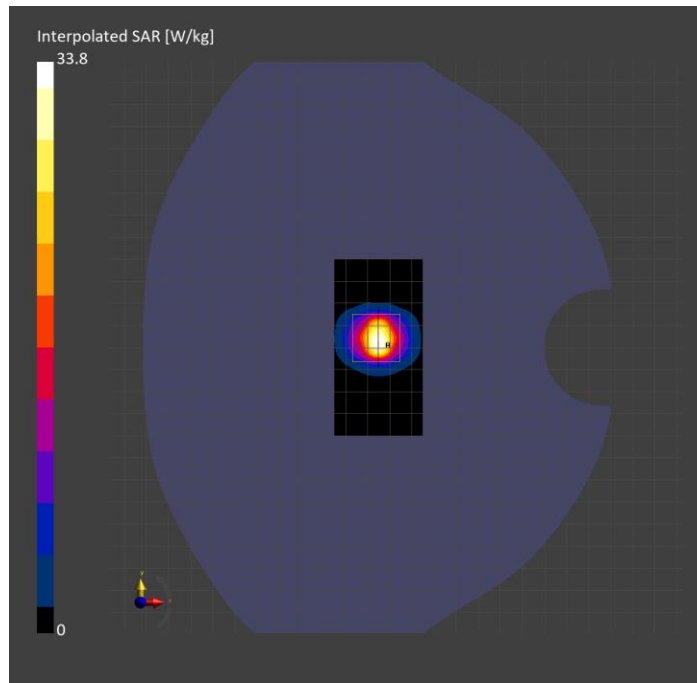
Probe   Calibration Date	EX3DV4 - SN7356   2023-03-17	Phantom	Twin-SAM V8.0 (30deg probe tilt)
DAE   Calibration Date	DAE4 Sn1674   2023-05-11	TSL Type	HBBL-600-10000
Software Version	16.2.4.2524		

## Scans Setup

	Area Scan	Zoom Scan
Grid Extents [mm]	40.0 x 80.0	22.0 x 22.0 x 22.0
Grid Steps [mm]	10.0 x 10.0	4.0 x 4.0 x 1.4
Sensor Surface [mm]	3.0	1.4
Graded Grid	N/A	Yes
M2/M1 [%]		63.1
Dist 3dB Peak [mm]		7.4

## Measurement Results

	Area Scan	Zoom Scan
psSAR1g [W/Kg]	7.49	8.28
psSAR10g [W/Kg]	2.24	2.38
Power Drift [dB]	N/A	0.07



# System Performance Check Report for D1950V3 - SN1136

## Exposure Conditions

Frequency [MHz]   Channel Number	1950.000   0	TSL Permittivity	39.4
Group   UID	CW   0--	TSL Conductivity [S/m]	1.43
Conversion Factor	8.42	Phantom Section   TSL	Flat   HSL

## Hardware Setup

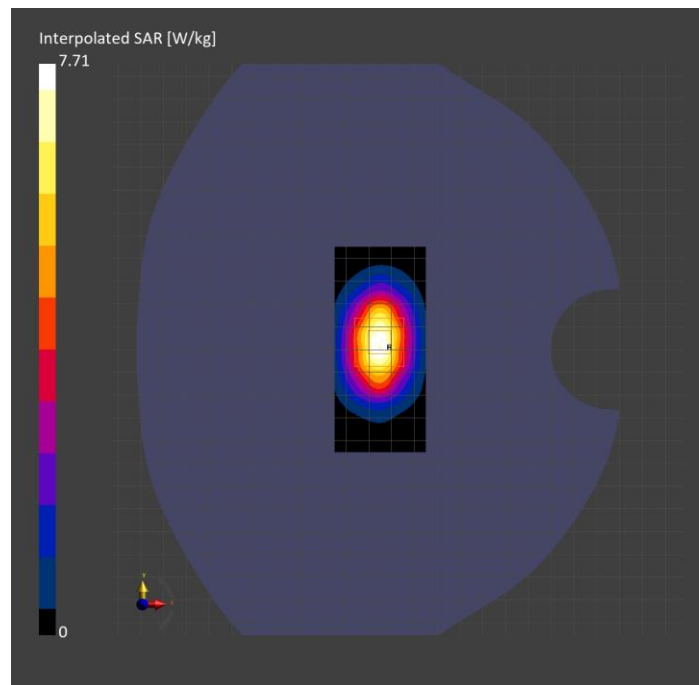
Probe   Calibration Date	EX3DV4 - SN3989   2024-01-09	Phantom	Twin-SAM V8.0 (30deg probe tilt)
DAE   Calibration Date	DAE4 Sn1674   2023-05-11	TSL Type	HBBL-600-10000
Software Version	16.2.4.2524		

## Scans Setup

	Area Scan	Zoom Scan
Grid Extents [mm]	40.0 x 90.0	30.0 x 30.0 x 30.0
Grid Steps [mm]	10.0 x 15.0	6.0 x 6.0 x 1.5
Sensor Surface [mm]	3.0	1.4
Graded Grid	N/A	Yes
M2/M1 [%]		85.3
Dist 3dB Peak [mm]		10.8

## Measurement Results

	Area Scan	Zoom Scan
psSAR1g [W/Kg]	4.31	<b>4.30</b>
psSAR10g [W/Kg]	2.21	<b>2.27</b>
Power Drift [dB]	N/A	-0.06





# System Performance Check Report for D1640V2 - SN324

## Exposure Conditions

Frequency [MHz]   Channel Number	1640.000   0	TSL Permittivity	43.4
Group   UID	CW   0--	TSL Conductivity [S/m]	1.23
Conversion Factor	8.51	Phantom Section   TSL	Flat   HSL

## Hardware Setup

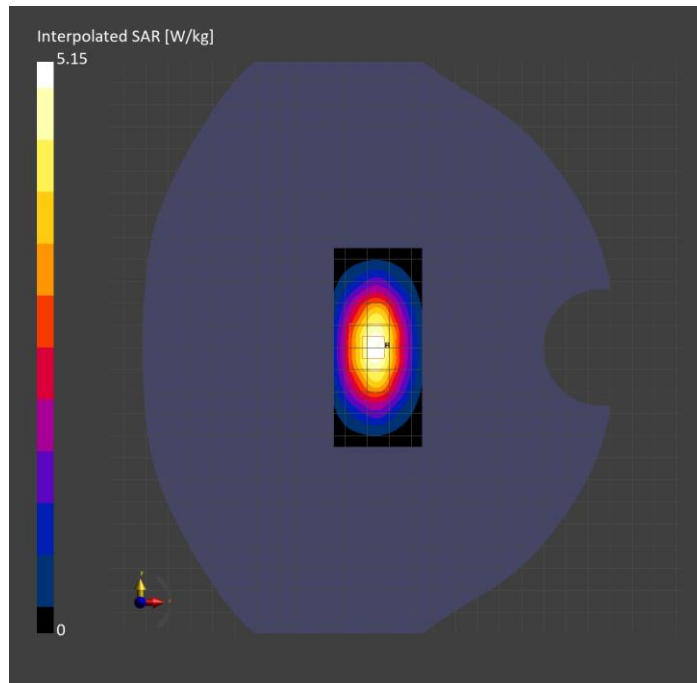
Probe   Calibration Date	EX3DV4 - SN3989   2024-01-09	Phantom	Twin-SAM V8.0 (30deg probe tilt)
DAE   Calibration Date	DAE4 Sn1674   2023-05-11	TSL Type	HBBL-600-10000
Software Version	16.2.4.2524		

## Scans Setup

	Area Scan	Zoom Scan
Grid Extents [mm]	40.0 x 90.0	30.0 x 30.0 x 30.0
Grid Steps [mm]	10.0 x 15.0	6.0 x 6.0 x 1.5
Sensor Surface [mm]	3.0	1.4
Graded Grid	N/A	Yes
M2/M1 [%]		89.5
Dist 3dB Peak [mm]		10.8

## Measurement Results

	Area Scan	Zoom Scan
psSAR1g [W/Kg]	3.33	<b>3.32</b>
psSAR10g [W/Kg]	1.83	<b>1.87</b>
Power Drift [dB]	N/A	-0.01



# System Performance Check Report for D3700V2 - SN1039

## Exposure Conditions

Frequency [MHz]   Channel Number	3700.000   0	TSL Permittivity	40.6
Group   UID	CW   0--	TSL Conductivity [S/m]	2.82
Conversion Factor	7.02	Phantom Section   TSL	Flat   HSL

## Hardware Setup

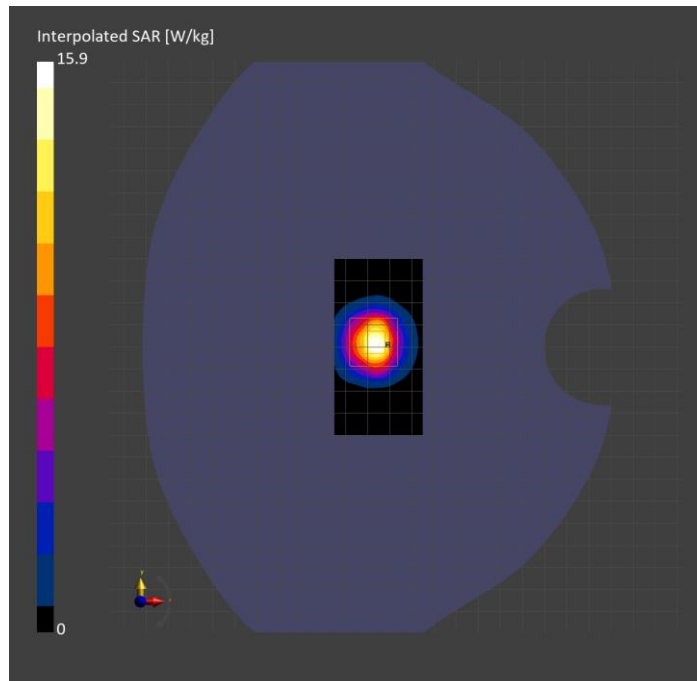
Probe   Calibration Date	EX3DV4 - SN3989   2024-01-09	Phantom	Twin-SAM V8.0 (30deg probe tilt)
DAE   Calibration Date	DAE4 Sn1674   2023-05-11	TSL Type	HBBL-600-10000
Software Version	16.2.4.2524		

## Scans Setup

	Area Scan	Zoom Scan
Grid Extents [mm]	40.0 x 80.0	28.0 x 28.0 x 28.0
Grid Steps [mm]	10.0 x 10.0	5.0 x 5.0 x 1.4
Sensor Surface [mm]	3.0	1.4
Graded Grid	N/A	Yes
M2/M1 [%]		76.7
Dist 3dB Peak [mm]		8.0

## Measurement Results

	Area Scan	Zoom Scan
psSAR1g [W/Kg]	5.84	6.29
psSAR10g [W/Kg]	2.20	2.38
Power Drift [dB]	N/A	-0.02



# System Performance Check Report for D3900V2 - SN1102

## Exposure Conditions

Frequency [MHz]   Channel Number	3900.000   0	TSL Permittivity	39.5
Group   UID	CW   0--	TSL Conductivity [S/m]	3.28
Conversion Factor	7.06	Phantom Section   TSL	Flat   HSL

## Hardware Setup

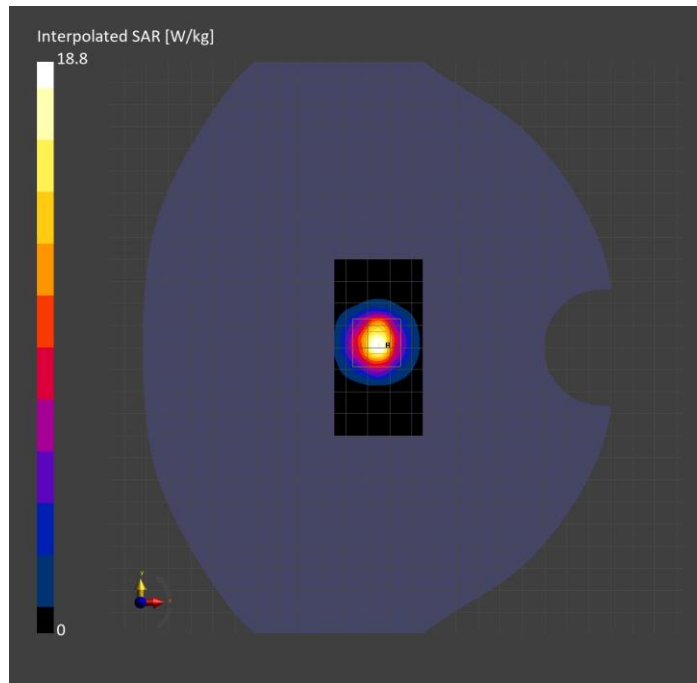
Probe   Calibration Date	EX3DV4 - SN3989   2024-01-09	Phantom	Twin-SAM V8.0 (30deg probe tilt)
DAE   Calibration Date	DAE4 Sn1674   2023-05-11	TSL Type	HBBL-600-10000
Software Version	16.2.4.2524		

## Scans Setup

	Area Scan	Zoom Scan
Grid Extents [mm]	40.0 x 80.0	28.0 x 28.0 x 28.0
Grid Steps [mm]	10.0 x 10.0	5.0 x 5.0 x 1.4
Sensor Surface [mm]	3.0	1.4
Graded Grid	N/A	Yes
M2/M1 [%]		74.1
Dist 3dB Peak [mm]		8.0

## Measurement Results

	Area Scan	Zoom Scan
psSAR1g [W/Kg]	6.49	6.72
psSAR10g [W/Kg]	2.29	2.37
Power Drift [dB]	N/A	0.00



# System Performance Check Report for D2450V2 - SN899

## Exposure Conditions

Frequency [MHz]   Channel Number	2450.000   0	TSL Permittivity	37.3
Group   UID	CW   0--	TSL Conductivity [S/m]	1.71
Conversion Factor	7.92	Phantom Section   TSL	Flat   HSL

## Hardware Setup

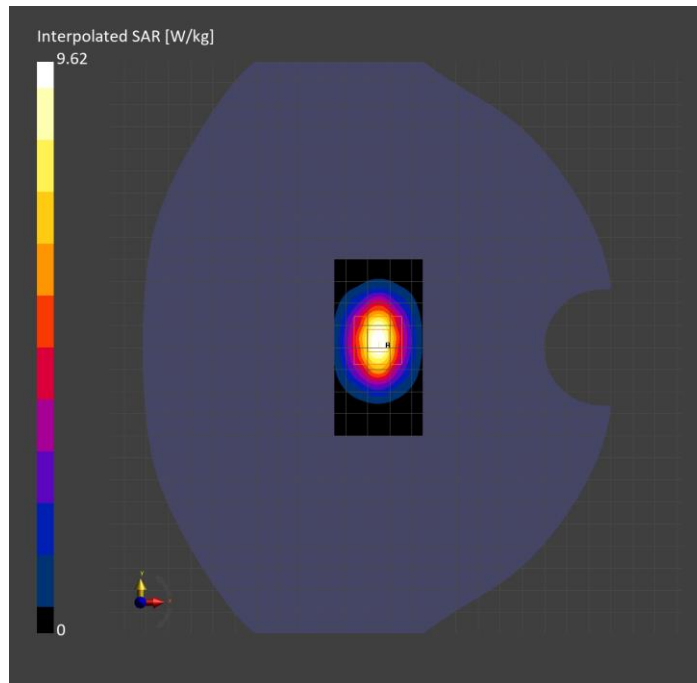
Probe   Calibration Date	EX3DV4 - SN3989   2024-01-09	Phantom	Twin-SAM V8.0 (30deg probe tilt)
DAE   Calibration Date	DAE4 Sn1674   2023-05-11	TSL Type	HBBL-600-10000
Software Version	16.2.4.2524		

## Scans Setup

	Area Scan	Zoom Scan
Grid Extents [mm]	40.0 x 80.0	30.0 x 30.0 x 30.0
Grid Steps [mm]	10.0 x 10.0	5.0 x 5.0 x 1.5
Sensor Surface [mm]	3.0	1.4
Graded Grid	N/A	Yes
M2/M1 [%]		81.9
Dist 3dB Peak [mm]		9.0

## Measurement Results

	Area Scan	Zoom Scan
psSAR1g [W/Kg]	4.87	<b>4.90</b>
psSAR10g [W/Kg]	2.26	<b>2.34</b>
Power Drift [dB]	N/A	-0.03



# System Performance Check Report for D3500V2 - SN1060

## Exposure Conditions

Frequency [MHz]   Channel Number	3500.000   0	TSL Permittivity	40.3
Group   UID	CW   0--	TSL Conductivity [S/m]	2.67
Conversion Factor	6.86	Phantom Section   TSL	Flat   HSL

## Hardware Setup

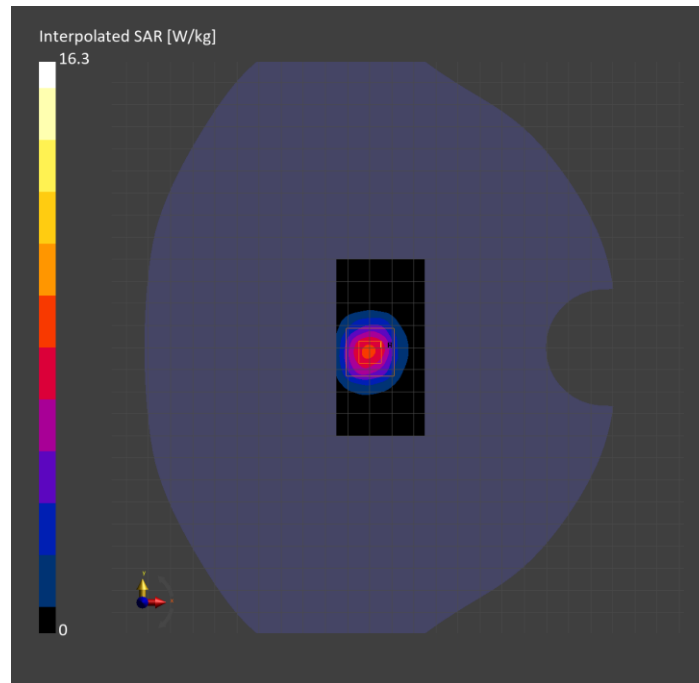
Probe   Calibration Date	EX3DV4 - SN3989   2024-01-09	Phantom	Twin-SAM V8.0 (30deg probe tilt)
DAE   Calibration Date	DAE4 Sn1674   2023-05-11	TSL Type	HBBL-600-10000
Software Version	16.2.4.2524		

## Scans Setup

	Area Scan	Zoom Scan
Grid Extents [mm]	40.0 x 80.0	28.0 x 28.0 x 28.0
Grid Steps [mm]	10.0 x 10.0	5.0 x 5.0 x 1.4
Sensor Surface [mm]	3.0	1.4
Graded Grid	N/A	Yes
M2/M1 [%]		79.4
Dist 3dB Peak [mm]		9.0

## Measurement Results

	Area Scan	Zoom Scan
psSAR1g [W/Kg]	6.41	6.89
psSAR10g [W/Kg]	2.65	2.72
Power Drift [dB]	N/A	0.01



# System Performance Check Report for D1750V2 - SN1053

## Exposure Conditions

Frequency [MHz]   Channel Number	1750.000   0	TSL Permittivity	42.8
Group   UID	CW   0--	TSL Conductivity [S/m]	1.26
Conversion Factor	8.98	Phantom Section   TSL	Flat   HSL

## Hardware Setup

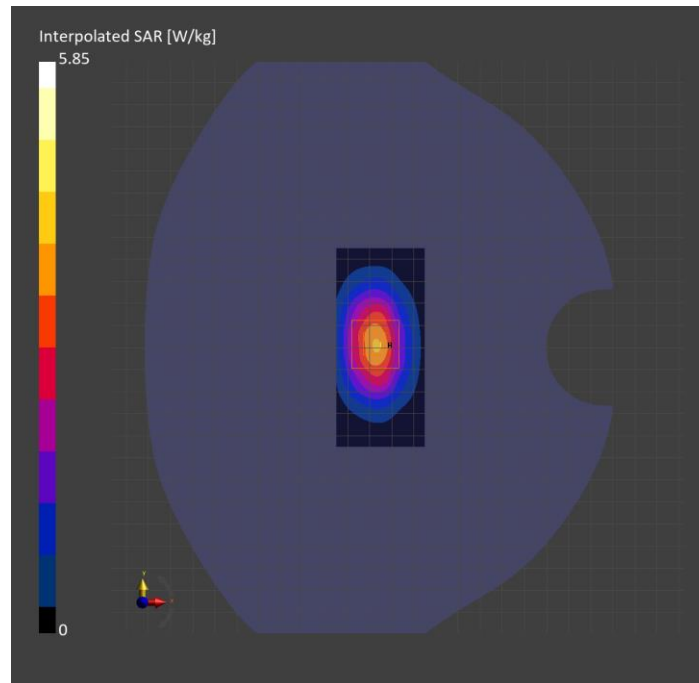
Probe   Calibration Date	EX3DV4 - SN3989   2024-01-09	Phantom	Twin-SAM V8.0 (30deg probe tilt)
DAE   Calibration Date	DAE4 Sn1674   2023-05-11	TSL Type	HBBL-600-10000
Software Version	16.2.4.2524		

## Scans Setup

	Area Scan	Zoom Scan
Grid Extents [mm]	40.0 x 90.0	30.0 x 30.0 x 30.0
Grid Steps [mm]	10.0 x 15.0	6.0 x 6.0 x 1.5
Sensor Surface [mm]	3.0	1.4
Graded Grid	N/A	Yes
M2/M1 [%]		83.9
Dist 3dB Peak [mm]		10.9

## Measurement Results

	Area Scan	Zoom Scan
psSAR1g [W/Kg]	3.23	3.31
psSAR10g [W/Kg]	1.75	1.81
Power Drift [dB]	N/A	-0.04



# System Performance Check Report for CLA-13 - SN1008

## Exposure Conditions

Frequency [MHz]   Channel Number	13.000   0	TSL Permittivity	55.1
Group   UID	CW   0--	TSL Conductivity [S/m]	0.764
Conversion Factor	18.85	Phantom Section   TSL	Flat   HSL

## Hardware Setup

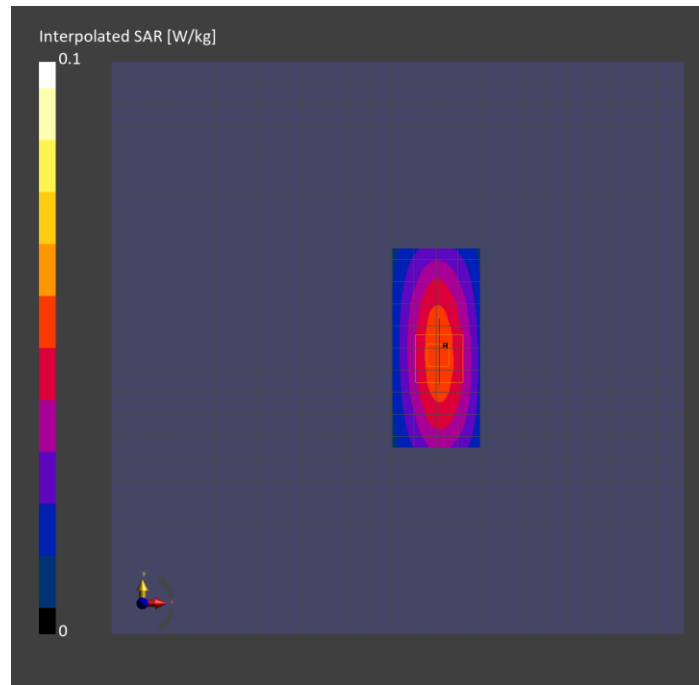
Probe   Calibration Date	EX3DV4 - SN3989   2024-01-09	Phantom	ELI V8.0 (20deg probe tilt)
DAE   Calibration Date	DAE4 Sn1674   2023-05-11	TSL Type	HBBL4-250V3
Software Version	16.2.4.2524		

## Scans Setup

	Area Scan	Zoom Scan
Grid Extents [mm]	40.0 x 90.0	30.0 x 30.0 x 30.0
Grid Steps [mm]	10.0 x 15.0	6.0 x 6.0 x 1.5
Sensor Surface [mm]	3.0	1.4
Graded Grid	N/A	Yes
M2/M1 [%]		75.9
Dist 3dB Peak [mm]		15.7

## Measurement Results

	Area Scan	Zoom Scan
psSAR1g [W/Kg]	0.053	<b>0.050</b>
psSAR10g [W/Kg]	0.043	<b>0.031</b>
Power Drift [dB]	N/A	0.01



# System Performance Check Report for D3900V2 - SN1102

## Exposure Conditions

Frequency [MHz]   Channel Number	3900.000   0	TSL Permittivity	34.5
Group   UID	CW   0--	TSL Conductivity [S/m]	3.06
Conversion Factor	6.66	Phantom Section   TSL	Flat   HSL

## Hardware Setup

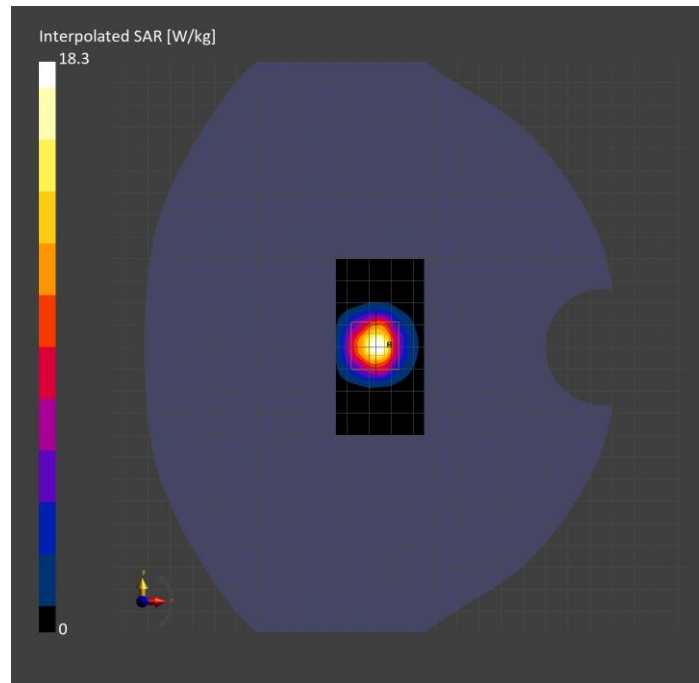
Probe   Calibration Date	EX3DV4 - SN3990   2024-02-28	Phantom	Twin-SAM V8.0 (30deg probe tilt)
DAE   Calibration Date	DAE4 Sn1544   2024-01-16	TSL Type	HBBL-600-10000
Software Version	16.2.4.2524		

## Scans Setup

	Area Scan	Zoom Scan
Grid Extents [mm]	40.0 x 80.0	28.0 x 28.0 x 28.0
Grid Steps [mm]	10.0 x 10.0	5.0 x 5.0 x 1.4
Sensor Surface [mm]	3.0	1.4
Graded Grid	N/A	Yes
M2/M1 [%]		71.6
Dist 3dB Peak [mm]		8.1

## Measurement Results

	Area Scan	Zoom Scan
psSAR1g [W/Kg]	5.85	6.31
psSAR10g [W/Kg]	2.10	2.23
Power Drift [dB]	N/A	-0.03





# System Performance Check Report for D3700V2 - SN1039

## Exposure Conditions

Frequency [MHz]   Channel Number	3700.000   0	TSL Permittivity	37.8
Group   UID	CW   0--	TSL Conductivity [S/m]	2.89
Conversion Factor	6.63	Phantom Section   TSL	Flat   HSL

## Hardware Setup

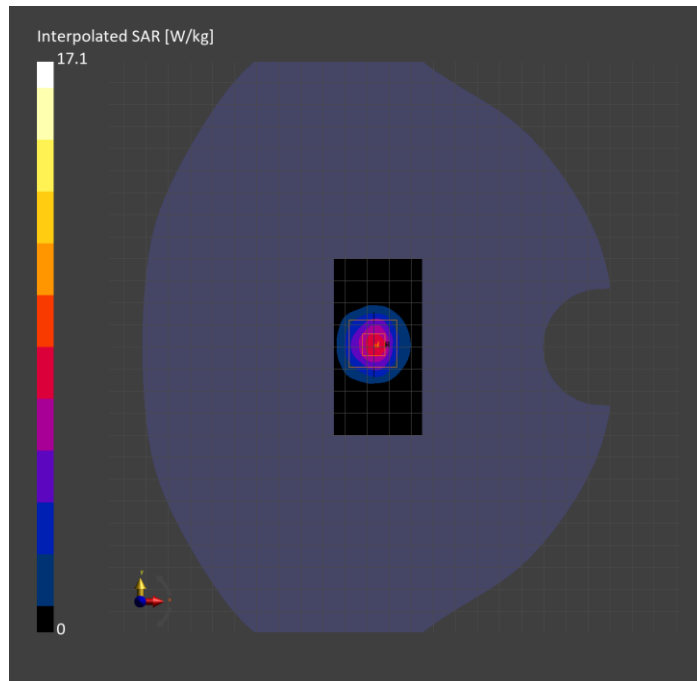
Probe   Calibration Date	EX3DV4 - SN3990   2024-02-28	Phantom	Twin-SAM V8.0 (30deg probe tilt)
DAE   Calibration Date	DAE4 Sn1544   2024-01-16	TSL Type	HBBL-600-10000
Software Version	16.2.4.2524		

## Scans Setup

	Area Scan	Zoom Scan
Grid Extents [mm]	40.0 x 80.0	28.0 x 28.0 x 28.0
Grid Steps [mm]	10.0 x 10.0	5.0 x 5.0 x 1.4
Sensor Surface [mm]	3.0	1.4
Graded Grid	N/A	Yes
M2/M1 [%]		73.4
Dist 3dB Peak [mm]		8.0

## Measurement Results

	Area Scan	Zoom Scan
psSAR1g [W/Kg]	6.08	6.25
psSAR10g [W/Kg]	2.31	2.34
Power Drift [dB]	N/A	-0.11



# System Performance Check Report for D750V3 - SN1019

## Exposure Conditions

Frequency [MHz]   Channel Number	750.000   0	TSL Permittivity	42.7
Group   UID	CW   0--	TSL Conductivity [S/m]	0.874
Conversion Factor	9.47	Phantom Section   TSL	Flat   HSL

## Hardware Setup

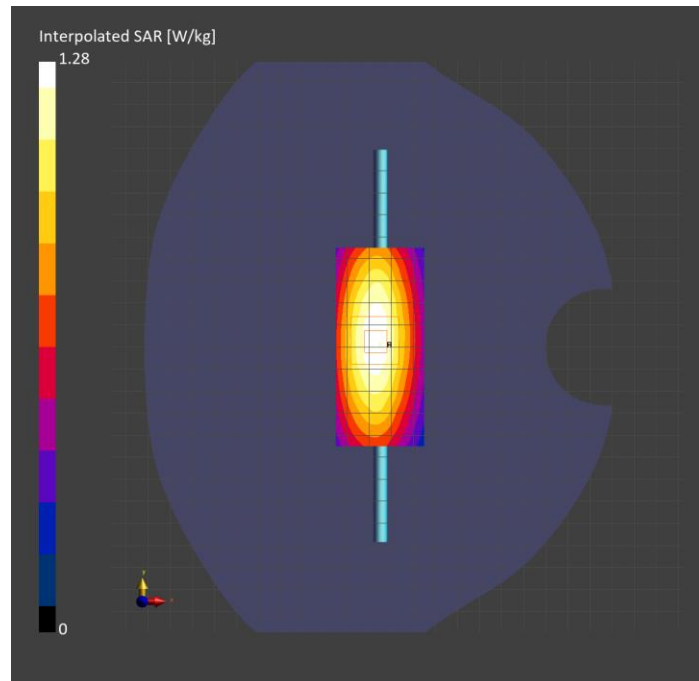
Probe   Calibration Date	EX3DV4 - SN3990   2024-02-28	Phantom	Twin-SAM V8.0 (30deg probe tilt)
DAE   Calibration Date	DAE4 Sn1544   2024-01-16	TSL Type	HBBL-600-10000
Software Version	16.2.4.2524		

## Scans Setup

	Area Scan	Zoom Scan
Grid Extents [mm]	40.0 x 90.0	30.0 x 30.0 x 30.0
Grid Steps [mm]	10.0 x 15.0	6.0 x 6.0 x 1.5
Sensor Surface [mm]	3.0	1.4
Graded Grid	N/A	Yes
M2/M1 [%]		88.8
Dist 3dB Peak [mm]		> 15.0

## Measurement Results

	Area Scan	Zoom Scan
psSAR1g [W/Kg]	0.863	<b>0.868</b>
psSAR10g [W/Kg]	0.578	<b>0.578</b>
Power Drift [dB]	N/A	0.00



# System Performance Check Report for D835V2 - SN4d002

## Exposure Conditions

Frequency [MHz]   Channel Number	835.000   0	TSL Permittivity	40.7
Group   UID	CW   0--	TSL Conductivity [S/m]	0.885
Conversion Factor	9.11	Phantom Section   TSL	Flat   HSL

## Hardware Setup

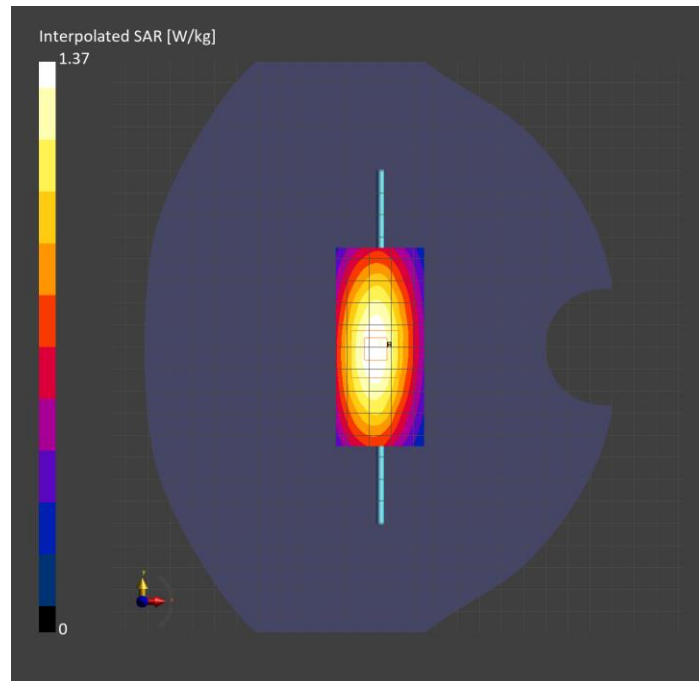
Probe   Calibration Date	EX3DV4 - SN3990   2024-02-28	Phantom	Twin-SAM V8.0 (30deg probe tilt)
DAE   Calibration Date	DAE4 Sn1544   2024-01-16	TSL Type	HBBL-600-10000
Software Version	16.2.4.2524		

## Scans Setup

	Area Scan	Zoom Scan
Grid Extents [mm]	40.0 x 90.0	30.0 x 30.0 x 30.0
Grid Steps [mm]	10.0 x 15.0	6.0 x 6.0 x 1.5
Sensor Surface [mm]	3.0	1.4
Graded Grid	N/A	Yes
M2/M1 [%]		88.3
Dist 3dB Peak [mm]		19.0

## Measurement Results

	Area Scan	Zoom Scan
psSAR1g [W/Kg]	0.918	<b>0.922</b>
psSAR10g [W/Kg]	0.607	<b>0.610</b>
Power Drift [dB]	N/A	0.01



# System Performance Check Report for D750V3 - SN1071

## Exposure Conditions

Frequency [MHz]   Channel Number	750.000   0	TSL Permittivity	42.7
Group   UID	CW   0--	TSL Conductivity [S/m]	0.874
Conversion Factor	9.37	Phantom Section   TSL	Flat   HSL

## Hardware Setup

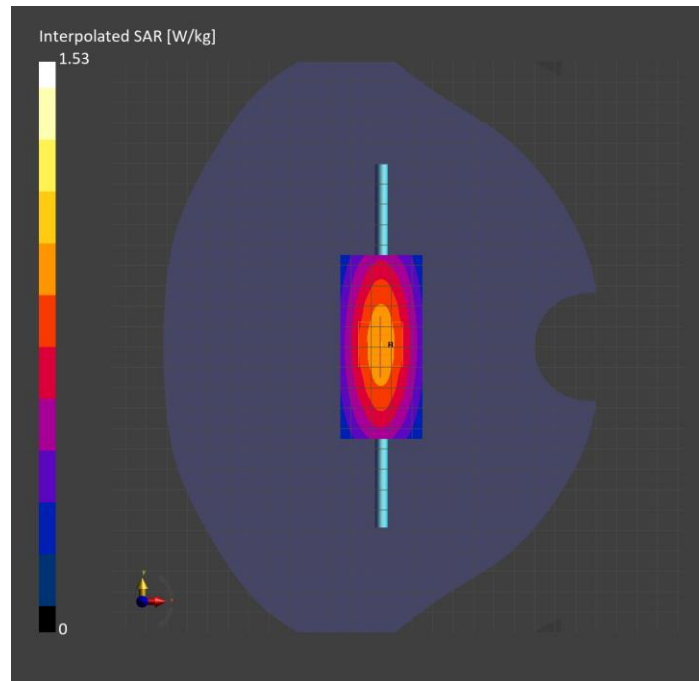
Probe   Calibration Date	EX3DV4 - SN3749   2024-01-11	Phantom	Twin-SAM V8.0 (30deg probe tilt)
DAE   Calibration Date	DAE4 Sn1544   2024-01-16	TSL Type	HBBL-600-10000
Software Version	16.2.4.2524		

## Scans Setup

	Area Scan	Zoom Scan
Grid Extents [mm]	40.0 x 90.0	30.0 x 30.0 x 30.0
Grid Steps [mm]	10.0 x 15.0	6.0 x 6.0 x 1.5
Sensor Surface [mm]	3.0	1.4
Graded Grid	N/A	Yes
M2/M1 [%]		81.2
Dist 3dB Peak [mm]		> 15.0

## Measurement Results

	Area Scan	Zoom Scan
psSAR1g [W/Kg]	0.883	<b>0.880</b>
psSAR10g [W/Kg]	0.586	<b>0.576</b>
Power Drift [dB]	N/A	-0.16



# System Performance Check Report for D835V2 - SN4d002

## Exposure Conditions

Frequency [MHz]   Channel Number	835.000   0	TSL Permittivity	42.4
Group   UID	CW   0--	TSL Conductivity [S/m]	0.951
Conversion Factor	9.03	Phantom Section   TSL	Flat   HSL

## Hardware Setup

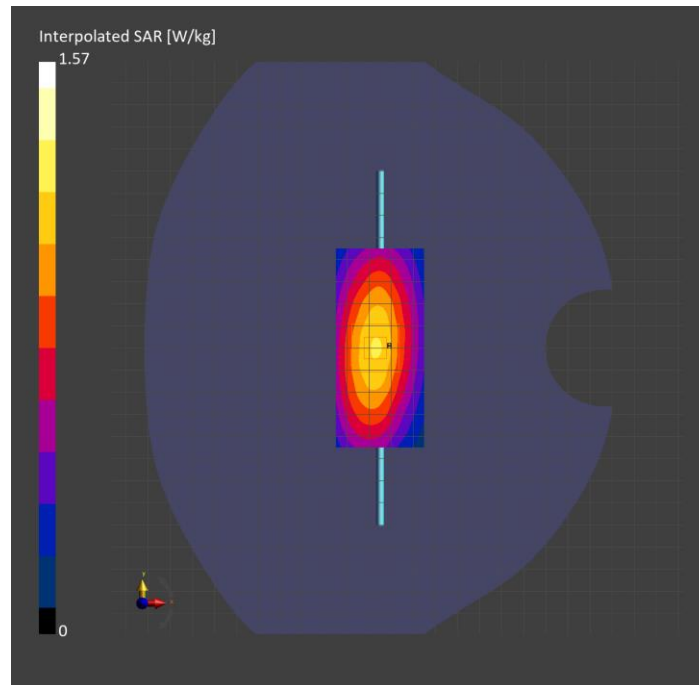
Probe   Calibration Date	EX3DV4 - SN7448   2024-02-07	Phantom	Twin-SAM V8.0 (30deg probe tilt)
DAE   Calibration Date	DAE4 Sn1433   2024-02-08	TSL Type	HBBL-600-10000
Software Version	16.2.4.2524		

## Scans Setup

	Area Scan	Zoom Scan
Grid Extents [mm]	40.0 x 90.0	30.0 x 30.0 x 30.0
Grid Steps [mm]	10.0 x 15.0	6.0 x 6.0 x 1.5
Sensor Surface [mm]	3.0	1.4
Graded Grid	N/A	Yes
M2/M1 [%]		88.2
Dist 3dB Peak [mm]		20.4

## Measurement Results

	Area Scan	Zoom Scan
psSAR1g [W/Kg]	1.04	<b>1.05</b>
psSAR10g [W/Kg]	0.687	<b>0.692</b>
Power Drift [dB]	N/A	-0.00



# System Performance Check Report for D750V3 - SN1019

## Exposure Conditions

Frequency [MHz]   Channel Number	750.000   0	TSL Permittivity	43.8
Group   UID	CW   0--	TSL Conductivity [S/m]	0.868
Conversion Factor	8.87	Phantom Section   TSL	Flat   HSL

## Hardware Setup

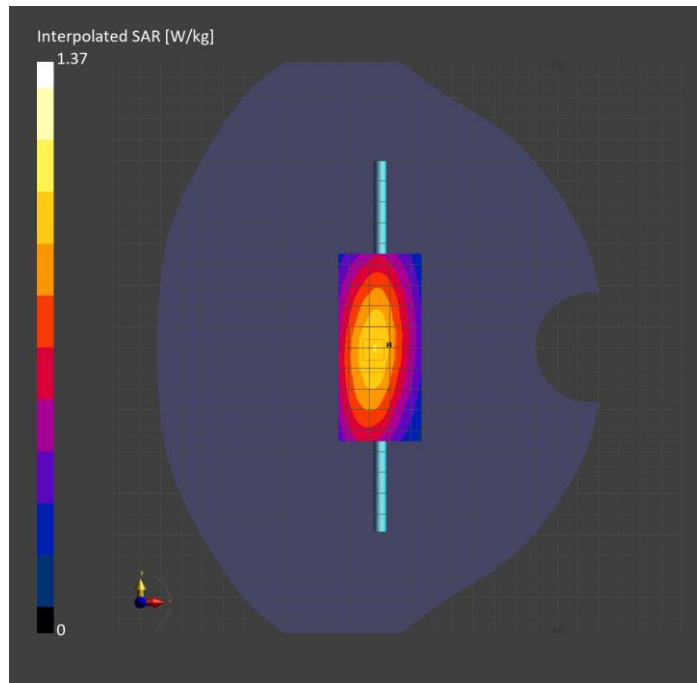
Probe   Calibration Date	EX3DV4 - SN7448   2024-02-07	Phantom	Twin-SAM V8.0 (30deg probe tilt)
DAE   Calibration Date	DAE4 Sn1433   2024-02-08	TSL Type	HBBL-600-10000
Software Version	16.2.4.2524		

## Scans Setup

	Area Scan	Zoom Scan
Grid Extents [mm]	40.0 x 90.0	30.0 x 30.0 x 30.0
Grid Steps [mm]	10.0 x 15.0	6.0 x 6.0 x 1.5
Sensor Surface [mm]	3.0	1.4
Graded Grid	N/A	Yes
M2/M1 [%]		88.3
Dist 3dB Peak [mm]		20.5

## Measurement Results

	Area Scan	Zoom Scan
psSAR1g [W/Kg]	0.898	<b>0.916</b>
psSAR10g [W/Kg]	0.603	<b>0.607</b>
Power Drift [dB]	N/A	-0.17



# System Performance Check Report for D1900V2 - SN5d140

## Exposure Conditions

Frequency [MHz]   Channel Number	1900.000   0	TSL Permittivity	41.8
Group   UID	CW   0--	TSL Conductivity [S/m]	1.38
Conversion Factor	7.55	Phantom Section   TSL	Flat   HSL

## Hardware Setup

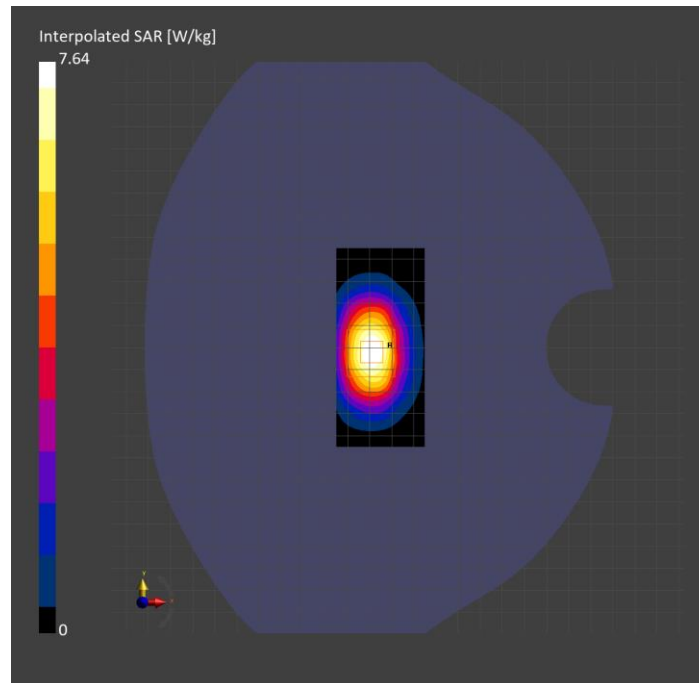
Probe   Calibration Date	EX3DV4 - SN7448   2024-02-07	Phantom	Twin-SAM V8.0 (30deg probe tilt)
DAE   Calibration Date	DAE4 Sn1433   2024-02-08	TSL Type	HBBL-600-10000
Software Version	16.2.4.2524		

## Scans Setup

	Area Scan	Zoom Scan
Grid Extents [mm]	40.0 x 90.0	30.0 x 30.0 x 30.0
Grid Steps [mm]	10.0 x 15.0	6.0 x 6.0 x 1.5
Sensor Surface [mm]	3.0	1.4
Graded Grid	N/A	Yes
M2/M1 [%]		84.0
Dist 3dB Peak [mm]		10.3

## Measurement Results

	Area Scan	Zoom Scan
psSAR1g [W/Kg]	4.13	<b>4.24</b>
psSAR10g [W/Kg]	2.24	<b>2.25</b>
Power Drift [dB]	N/A	0.00



# System Performance Check Report for D1750V2 - SN1053

## Exposure Conditions

Frequency [MHz]   Channel Number	1750.000   0	TSL Permittivity	39.9
Group   UID	CW   0--	TSL Conductivity [S/m]	1.27
Conversion Factor	7.98	Phantom Section   TSL	Flat   HSL

## Hardware Setup

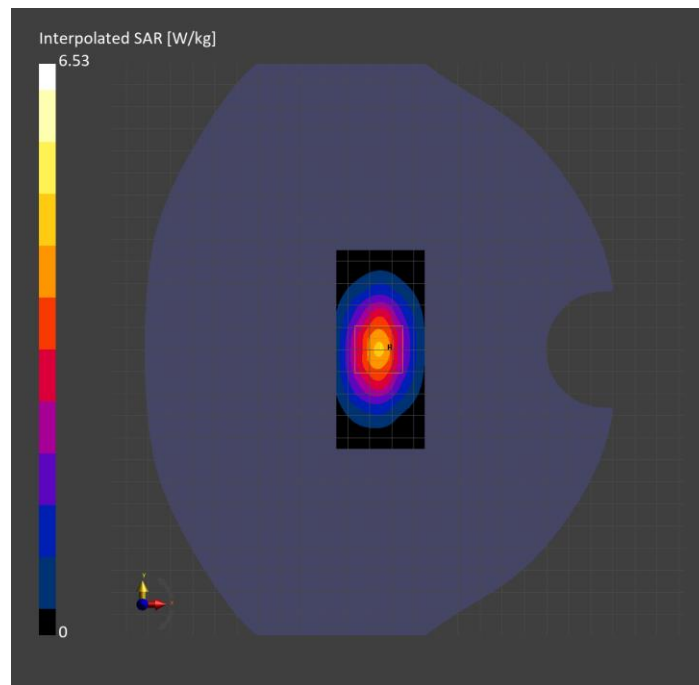
Probe   Calibration Date	EX3DV4 - SN7448   2024-02-07	Phantom	Twin-SAM V8.0 (30deg probe tilt)
DAE   Calibration Date	DAE4 Sn1433   2024-02-08	TSL Type	HBBL-600-10000
Software Version	16.2.4.2524		

## Scans Setup

	Area Scan	Zoom Scan
Grid Extents [mm]	40.0 x 90.0	30.0 x 30.0 x 30.0
Grid Steps [mm]	10.0 x 15.0	6.0 x 6.0 x 1.5
Sensor Surface [mm]	3.0	1.4
Graded Grid	N/A	Yes
M2/M1 [%]		82.5
Dist 3dB Peak [mm]		10.8

## Measurement Results

	Area Scan	Zoom Scan
psSAR1g [W/Kg]	3.60	<b>3.56</b>
psSAR10g [W/Kg]	1.94	<b>1.93</b>
Power Drift [dB]	N/A	-0.00





# System Performance Check Report for D2600V2 - SN1006

## Exposure Conditions

Frequency [MHz]   Channel Number	2600.000   0	TSL Permittivity	39.9
Group   UID	CW   0--	TSL Conductivity [S/m]	1.89
Conversion Factor	7.64	Phantom Section   TSL	Flat   HSL

## Hardware Setup

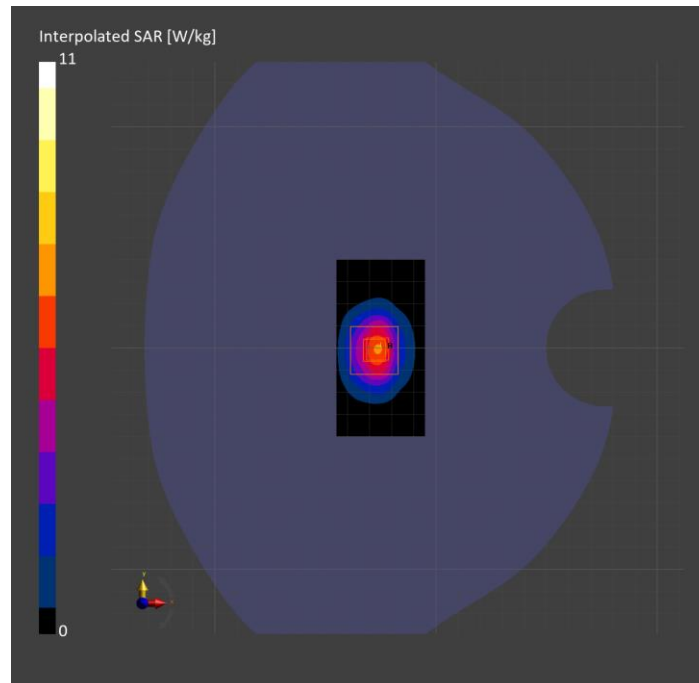
Probe   Calibration Date	EX3DV4 - SN3885   2023-10-12	Phantom	Twin-SAM V8.0 (30deg probe tilt)
DAE   Calibration Date	DAE4 Sn1787   2023-05-03	TSL Type	HBBL-600-10000
Software Version	16.2.4.2524		

## Scans Setup

	Area Scan	Zoom Scan
Grid Extents [mm]	40.0 x 80.0	30.0 x 30.0 x 30.0
Grid Steps [mm]	10.0 x 10.0	5.0 x 5.0 x 1.5
Sensor Surface [mm]	3.0	1.4
Graded Grid	N/A	Yes
M2/M1 [%]		78.7
Dist 3dB Peak [mm]		9.0

## Measurement Results

	Area Scan	Zoom Scan
psSAR1g [W/Kg]	4.97	5.13
psSAR10g [W/Kg]	2.24	2.32
Power Drift [dB]	N/A	-0.03



# System Performance Check Report for D2300V2 - SN1058

## Exposure Conditions

Frequency [MHz]   Channel Number	2300.000   0	TSL Permittivity	38.4
Group   UID	CW   0--	TSL Conductivity [S/m]	1.60
Conversion Factor	7.82	Phantom Section   TSL	Flat   HSL

## Hardware Setup

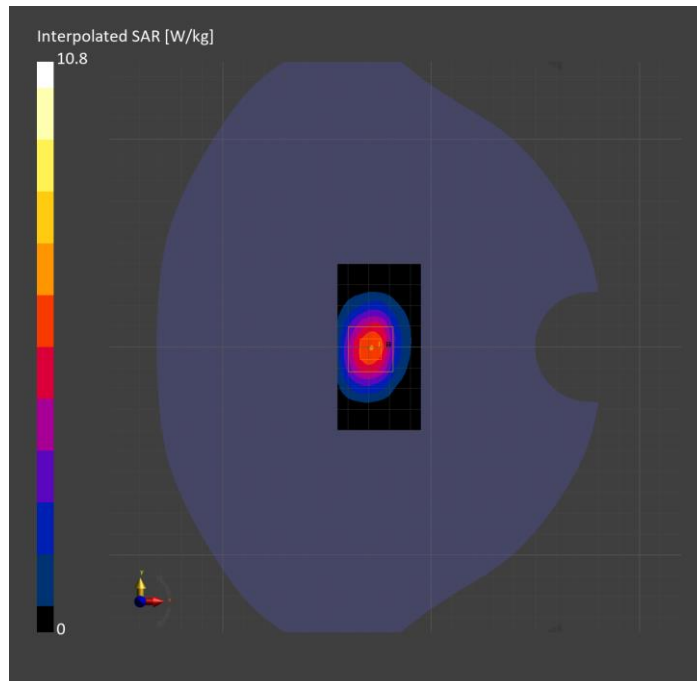
Probe   Calibration Date	EX3DV4 - SN3885   2023-10-12	Phantom	Twin-SAM V8.0 (30deg probe tilt)
DAE   Calibration Date	DAE4 Sn1787   2023-05-03	TSL Type	HBBL-600-10000
Software Version	16.2.4.2524		

## Scans Setup

	Area Scan	Zoom Scan
Grid Extents [mm]	40.0 x 80.0	30.0 x 30.0 x 30.0
Grid Steps [mm]	10.0 x 10.0	5.0 x 5.0 x 1.5
Sensor Surface [mm]	3.0	1.4
Graded Grid	N/A	Yes
M2/M1 [%]		78.8
Dist 3dB Peak [mm]		9.5

## Measurement Results

	Area Scan	Zoom Scan
psSAR1g [W/Kg]	5.06	5.24
psSAR10g [W/Kg]	2.53	2.54
Power Drift [dB]	N/A	0.02



# System Performance Check Report for D2450V2 - SN899

## Exposure Conditions

Frequency [MHz]   Channel Number	2450.000   0	TSL Permittivity	39.4
Group   UID	CW   0--	TSL Conductivity [S/m]	1.87
Conversion Factor	7.04	Phantom Section   TSL	Flat   HSL

## Hardware Setup

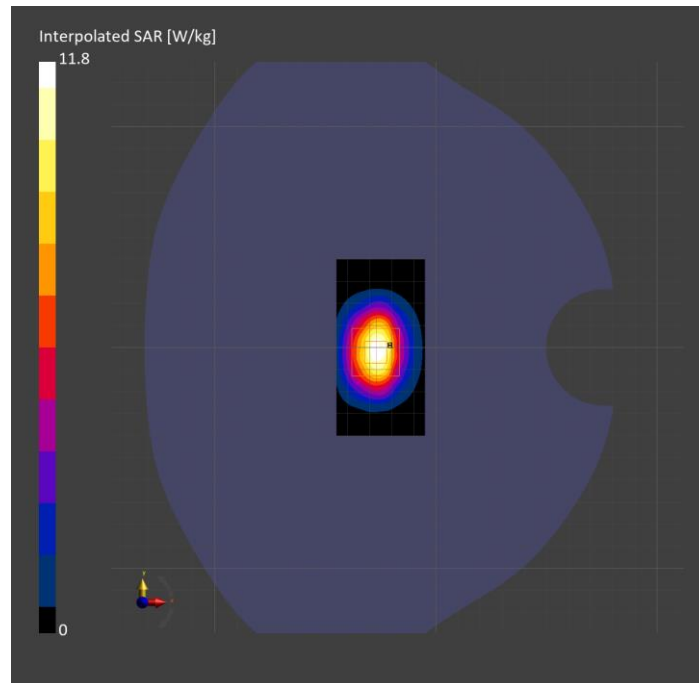
Probe   Calibration Date	EX3DV4 - SN7807   2023-04-11	Phantom	Twin-SAM V8.0 (30deg probe tilt)
DAE   Calibration Date	DAE4 Sn1784   2023-04-03	TSL Type	HBBL-600-10000
Software Version	16.2.4.2524		

## Scans Setup

	Area Scan	Zoom Scan
Grid Extents [mm]	40.0 x 80.0	30.0 x 30.0 x 30.0
Grid Steps [mm]	10.0 x 10.0	5.0 x 5.0 x 1.5
Sensor Surface [mm]	3.0	1.4
Graded Grid	N/A	Yes
M2/M1 [%]		78.9
Dist 3dB Peak [mm]		9.0

## Measurement Results

	Area Scan	Zoom Scan
psSAR1g [W/Kg]	5.65	5.57
psSAR10g [W/Kg]	2.66	2.59
Power Drift [dB]	N/A	-0.11



# System Performance Check Report for D5GHzV2 - SN1168

## Exposure Conditions

Frequency [MHz]   Channel Number	5250.000   0	TSL Permittivity	36.2
Group   UID	CW   0--	TSL Conductivity [S/m]	4.53
Conversion Factor	5.79	Phantom Section   TSL	Flat   HSL

## Hardware Setup

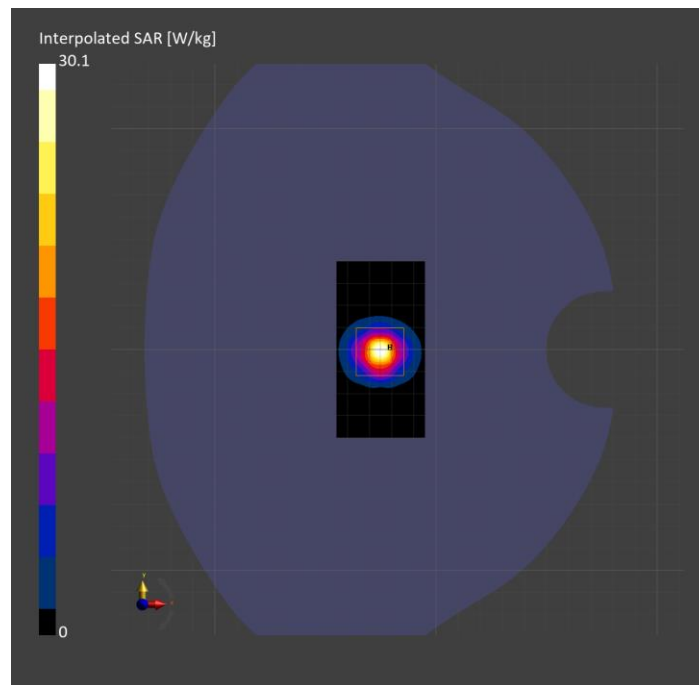
Probe   Calibration Date	EX3DV4 - SN7657   2023-05-30	Phantom	Twin-SAM V8.0 (30deg probe tilt)
DAE   Calibration Date	DAE4 Sn1784   2023-04-03	TSL Type	HBBL-600-10000
Software Version	16.2.4.2524		

## Scans Setup

	Area Scan	Zoom Scan
Grid Extents [mm]	40.0 x 80.0	22.0 x 22.0 x 22.0
Grid Steps [mm]	10.0 x 10.0	4.0 x 4.0 x 1.4
Sensor Surface [mm]	3.0	1.4
Graded Grid	N/A	Yes
M2/M1 [%]		64.9
Dist 3dB Peak [mm]		7.6

## Measurement Results

	Area Scan	Zoom Scan
psSAR1g [W/Kg]	7.48	7.91
psSAR10g [W/Kg]	2.16	2.31
Power Drift [dB]	N/A	0.04



# System Performance Check Report for D5GHzV2 - SN1168

## Exposure Conditions

Frequency [MHz]   Channel Number	5750.000   0	TSL Permittivity	35.3
Group   UID	CW   0--	TSL Conductivity [S/m]	5.09
Conversion Factor	5.16	Phantom Section   TSL	Flat   HSL

## Hardware Setup

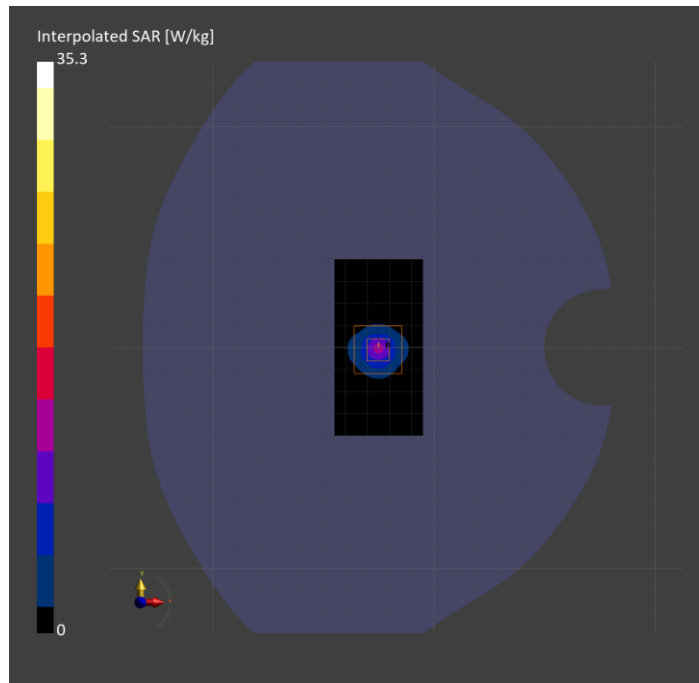
Probe   Calibration Date	EX3DV4 - SN7657   2023-05-30	Phantom	Twin-SAM V8.0 (30deg probe tilt)
DAE   Calibration Date	DAE4 Sn1784   2023-04-03	TSL Type	HBBL-600-10000
Software Version	16.2.4.2524		

## Scans Setup

	Area Scan	Zoom Scan
Grid Extents [mm]	40.0 x 80.0	22.0 x 22.0 x 22.0
Grid Steps [mm]	10.0 x 10.0	4.0 x 4.0 x 1.4
Sensor Surface [mm]	3.0	1.4
Graded Grid	N/A	Yes
M2/M1 [%]		61.3
Dist 3dB Peak [mm]		7.9

## Measurement Results

	Area Scan	Zoom Scan
psSAR1g [W/Kg]	8.05	<b>8.48</b>
psSAR10g [W/Kg]	2.31	<b>2.46</b>
Power Drift [dB]	N/A	-0.03



# System Performance Check Report for D5GHzV2 - SN1168

## Exposure Conditions

Frequency [MHz]   Channel Number	5600.000   0	TSL Permittivity	35.6
Group   UID	CW   0--	TSL Conductivity [S/m]	4.92
Conversion Factor	4.93	Phantom Section   TSL	Flat   HSL

## Hardware Setup

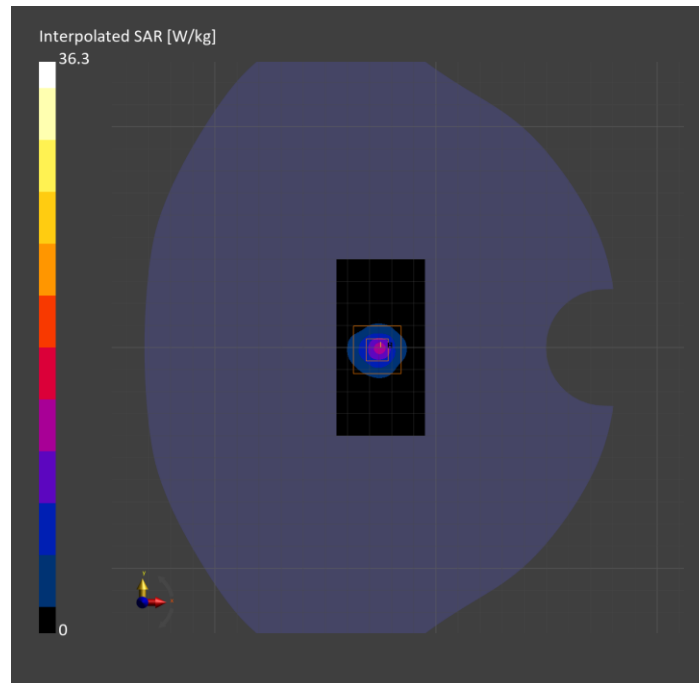
Probe   Calibration Date	EX3DV4 - SN7657   2023-05-30	Phantom	Twin-SAM V8.0 (30deg probe tilt)
DAE   Calibration Date	DAE4 Sn1784   2023-04-03	TSL Type	HBBL-600-10000
Software Version	16.2.4.2524		

## Scans Setup

	Area Scan	Zoom Scan
Grid Extents [mm]	40.0 x 80.0	22.0 x 22.0 x 22.0
Grid Steps [mm]	10.0 x 10.0	4.0 x 4.0 x 1.4
Sensor Surface [mm]	3.0	1.4
Graded Grid	N/A	Yes
M2/M1 [%]		62.6
Dist 3dB Peak [mm]		7.3

## Measurement Results

	Area Scan	Zoom Scan
psSAR1g [W/Kg]	8.42	<b>8.94</b>
psSAR10g [W/Kg]	2.40	<b>2.56</b>
Power Drift [dB]	N/A	0.01



# System Performance Check Report for D835V2 - SN4d002

## Exposure Conditions

Frequency [MHz]   Channel Number	835.000   0	TSL Permittivity	42.5
Group   UID	CW   0--	TSL Conductivity [S/m]	0.943
Conversion Factor	8.98	Phantom Section   TSL	Flat   HSL

## Hardware Setup

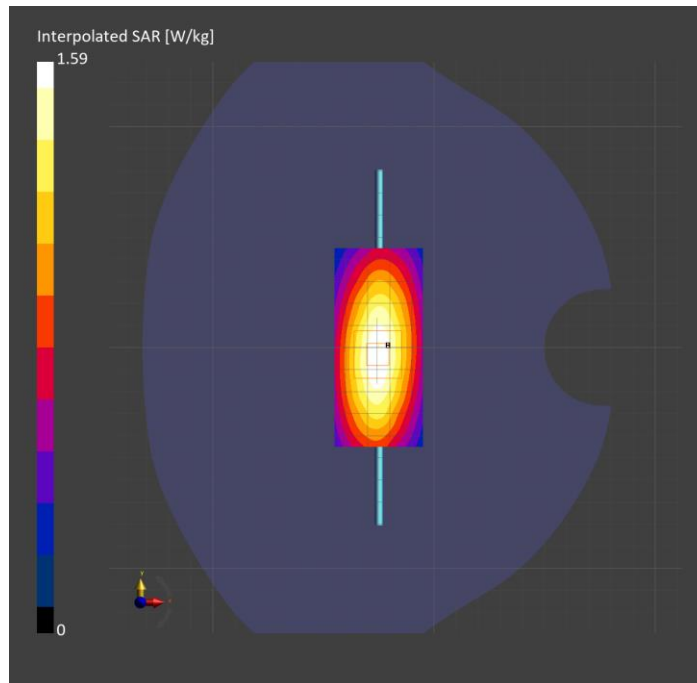
Probe   Calibration Date	EX3DV4 - SN7656   2023-05-15	Phantom	Twin-SAM V8.0 (30deg probe tilt)
DAE   Calibration Date	DAE4 Sn1784   2023-04-03	TSL Type	HBBL-600-10000
Software Version	16.2.4.2524		

## Scans Setup

	Area Scan	Zoom Scan
Grid Extents [mm]	40.0 x 90.0	30.0 x 30.0 x 30.0
Grid Steps [mm]	10.0 x 15.0	6.0 x 6.0 x 1.5
Sensor Surface [mm]	3.0	1.4
Graded Grid	N/A	Yes
M2/M1 [%]		87.7
Dist 3dB Peak [mm]		17.2

## Measurement Results

	Area Scan	Zoom Scan
psSAR1g [W/Kg]	1.05	<b>1.05</b>
psSAR10g [W/Kg]	0.689	<b>0.683</b>
Power Drift [dB]	N/A	-0.03



# System Performance Check Report for D750V3 - SN1019

## Exposure Conditions

Frequency [MHz]   Channel Number	750.000   0	TSL Permittivity	42.8
Group   UID	CW   0--	TSL Conductivity [S/m]	0.914
Conversion Factor	9.37	Phantom Section   TSL	Flat   HSL

## Hardware Setup

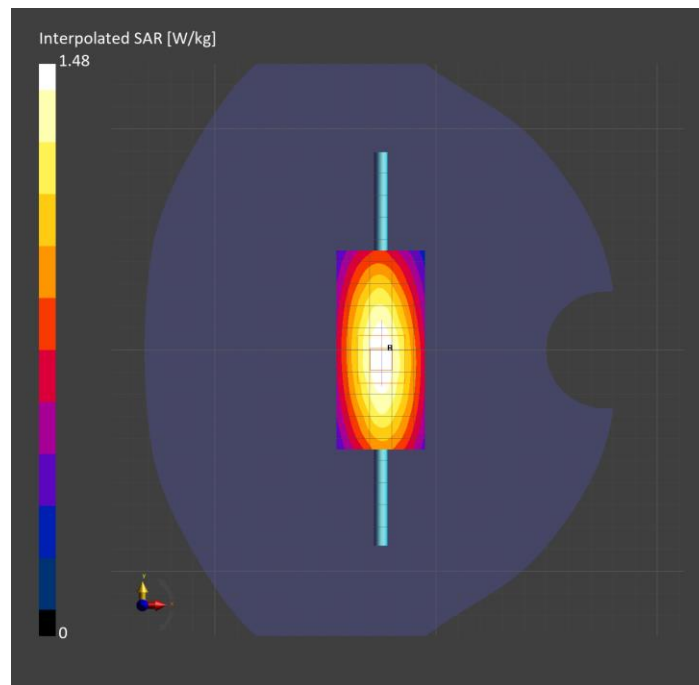
Probe   Calibration Date	EX3DV4 - SN7656   2023-05-15	Phantom	Twin-SAM V8.0 (30deg probe tilt)
DAE   Calibration Date	DAE4 Sn1784   2023-04-03	TSL Type	HBBL-600-10000
Software Version	16.2.4.2524		

## Scans Setup

	Area Scan	Zoom Scan
Grid Extents [mm]	40.0 x 90.0	30.0 x 30.0 x 30.0
Grid Steps [mm]	10.0 x 15.0	6.0 x 6.0 x 1.5
Sensor Surface [mm]	3.0	1.4
Graded Grid	N/A	Yes
M2/M1 [%]		85.3
Dist 3dB Peak [mm]		22.2

## Measurement Results

	Area Scan	Zoom Scan
psSAR1g [W/Kg]	0.923	<b>0.932</b>
psSAR10g [W/Kg]	0.615	<b>0.614</b>
Power Drift [dB]	N/A	-0.04





# System Performance Check Report for D750V3 - SN1024

## Exposure Conditions

Frequency [MHz]   Channel Number	750.000   0	TSL Permittivity	44.1
Group   UID	CW   0--	TSL Conductivity [S/m]	0.861
Conversion Factor	9.37	Phantom Section   TSL	Flat   HSL

## Hardware Setup

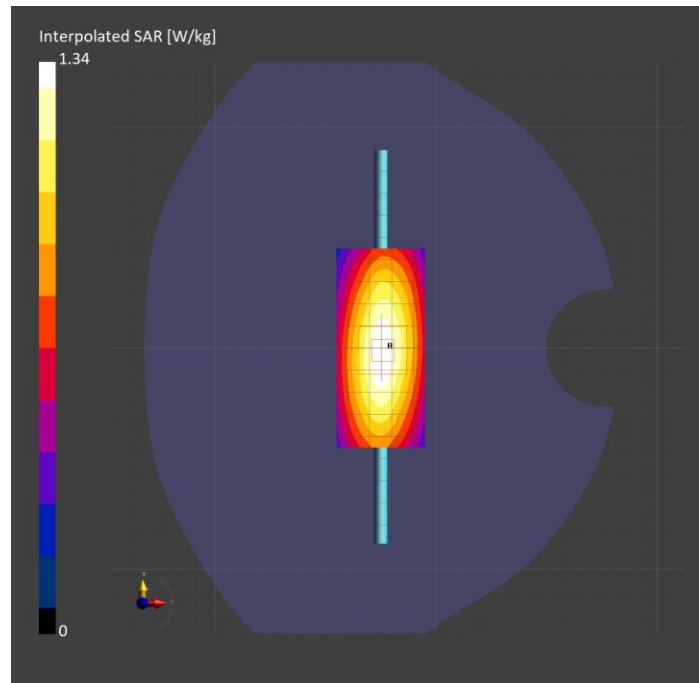
Probe   Calibration Date	EX3DV4 - SN7656   2023-05-15	Phantom	Twin-SAM V8.0 (30deg probe tilt)
DAE   Calibration Date	DAE4 Sn1784   2023-04-03	TSL Type	HBBL-600-10000
Software Version	16.2.4.2524		

## Scans Setup

	Area Scan	Zoom Scan
Grid Extents [mm]	40.0 x 90.0	30.0 x 30.0 x 30.0
Grid Steps [mm]	10.0 x 15.0	6.0 x 6.0 x 1.5
Sensor Surface [mm]	3.0	1.4
Graded Grid	N/A	Yes
M2/M1 [%]		88.5
Dist 3dB Peak [mm]		> 15.0

## Measurement Results

	Area Scan	Zoom Scan
psSAR1g [W/Kg]	0.902	<b>0.903</b>
psSAR10g [W/Kg]	0.601	<b>0.608</b>
Power Drift [dB]	N/A	0.02



# System Performance Check Report for D750V3 - SN1071

## Exposure Conditions

Frequency [MHz]   Channel Number	750.000   0	TSL Permittivity	42.7
Group   UID	CW   0--	TSL Conductivity [S/m]	0.867
Conversion Factor	9.37	Phantom Section   TSL	Flat   HSL

## Hardware Setup

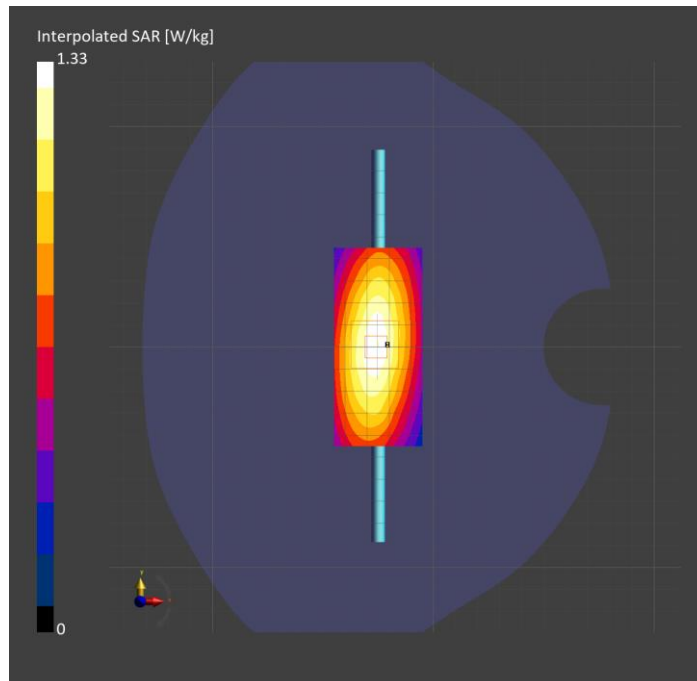
Probe   Calibration Date	EX3DV4 - SN7656   2023-05-15	Phantom	Twin-SAM V8.0 (30deg probe tilt)
DAE   Calibration Date	DAE4 Sn1357   2024-01-09	TSL Type	HBBL-600-10000
Software Version	16.2.4.2524		

## Scans Setup

	Area Scan	Zoom Scan
Grid Extents [mm]	40.0 x 90.0	30.0 x 30.0 x 30.0
Grid Steps [mm]	10.0 x 15.0	6.0 x 6.0 x 1.5
Sensor Surface [mm]	3.0	1.4
Graded Grid	N/A	Yes
M2/M1 [%]		88.7
Dist 3dB Peak [mm]		21.3

## Measurement Results

	Area Scan	Zoom Scan
psSAR1g [W/Kg]	0.916	<b>0.900</b>
psSAR10g [W/Kg]	0.610	<b>0.604</b>
Power Drift [dB]	N/A	-0.00



# System Performance Check Report for D1900V2 - SN5d140

## Exposure Conditions

Frequency [MHz]   Channel Number	1900.000   0	TSL Permittivity	41.5
Group   UID	CW   0--	TSL Conductivity [S/m]	1.42
Conversion Factor	8.09	Phantom Section   TSL	Flat   HSL

## Hardware Setup

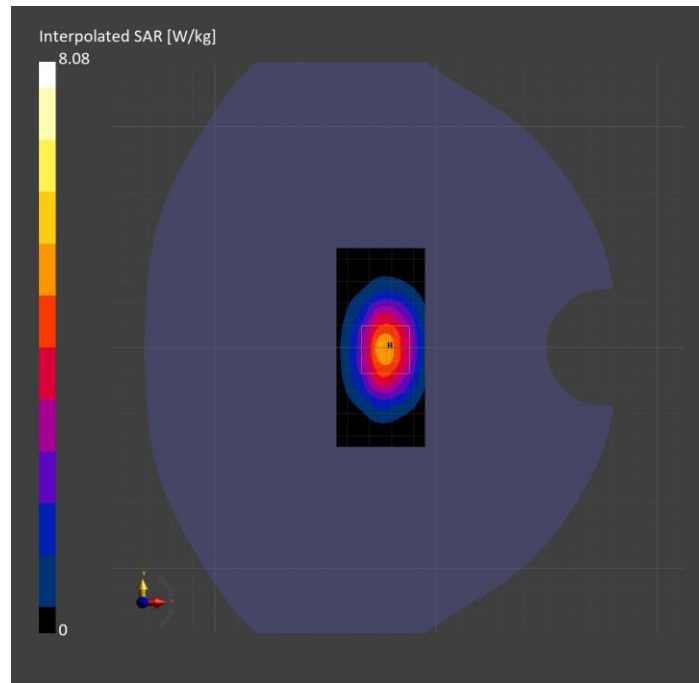
Probe   Calibration Date	EX3DV4 - SN7589   2023-04-18	Phantom	Twin-SAM V8.0 (30deg probe tilt)
DAE   Calibration Date	DAE4 Sn1547   2023-04-18	TSL Type	HBBL-600-10000
Software Version	16.2.4.2524		

## Scans Setup

	Area Scan	Zoom Scan
Grid Extents [mm]	40.0 x 90.0	30.0 x 30.0 x 30.0
Grid Steps [mm]	10.0 x 15.0	6.0 x 6.0 x 1.5
Sensor Surface [mm]	3.0	1.4
Graded Grid	N/A	Yes
M2/M1 [%]		81.6
Dist 3dB Peak [mm]		10.8

## Measurement Results

	Area Scan	Zoom Scan
psSAR1g [W/Kg]	4.21	<b>4.26</b>
psSAR10g [W/Kg]	2.23	<b>2.23</b>
Power Drift [dB]	N/A	0.01



# System Performance Check Report for D1750V2 - SN1053

## Exposure Conditions

Frequency [MHz]   Channel Number	1750.000   0	TSL Permittivity	37.5
Group   UID	CW   0--	TSL Conductivity [S/m]	1.35
Conversion Factor	7.33	Phantom Section   TSL	Flat   HSL

## Hardware Setup

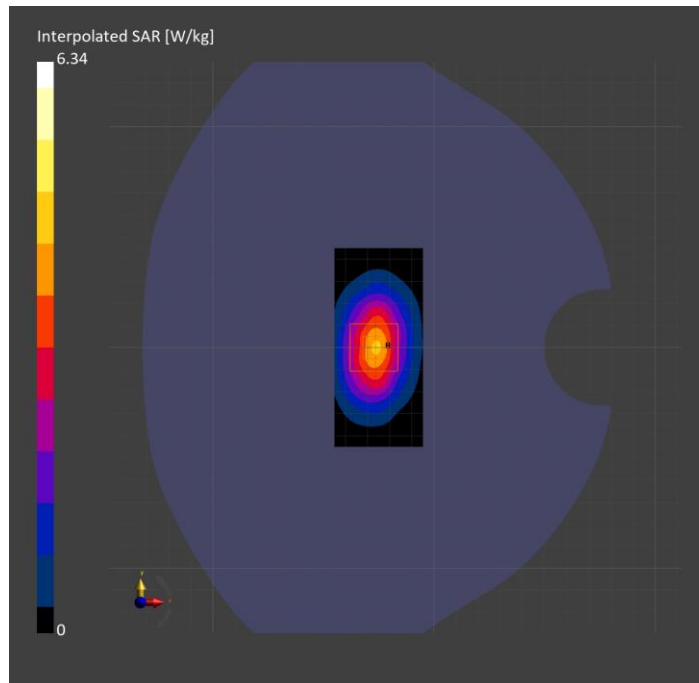
Probe   Calibration Date	EX3DV4 - SN3686   2024-01-12	Phantom	Twin-SAM V8.0 (30deg probe tilt)
DAE   Calibration Date	DAE4 Sn1258   2024-03-12	TSL Type	HBBL-600-10000
Software Version	16.2.4.2524		

## Scans Setup

	Area Scan	Zoom Scan
Grid Extents [mm]	40.0 x 90.0	30.0 x 30.0 x 30.0
Grid Steps [mm]	10.0 x 15.0	6.0 x 6.0 x 1.5
Sensor Surface [mm]	3.0	1.4
Graded Grid	N/A	Yes
M2/M1 [%]		83.2
Dist 3dB Peak [mm]		10.8

## Measurement Results

	Area Scan	Zoom Scan
psSAR1g [W/Kg]	3.49	<b>3.45</b>
psSAR10g [W/Kg]	1.88	<b>1.83</b>
Power Drift [dB]	N/A	-0.13



# System Performance Check Report for D2300V2 - SN1058

## Exposure Conditions

Frequency [MHz]   Channel Number	2300.000   0	TSL Permittivity	39.7
Group   UID	CW   0--	TSL Conductivity [S/m]	1.58
Conversion Factor	7.82	Phantom Section   TSL	Flat   HSL

## Hardware Setup

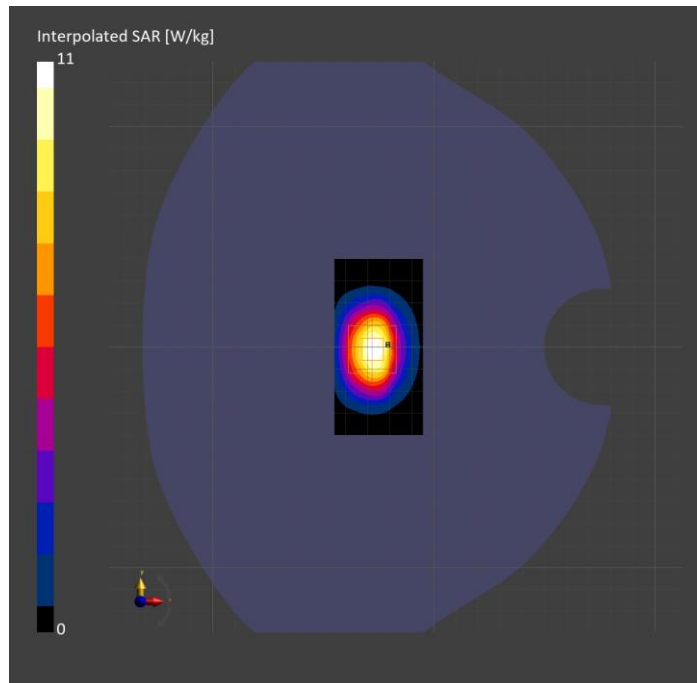
Probe   Calibration Date	EX3DV4 - SN3885   2023-10-12	Phantom	Twin-SAM V5.0 (30deg probe tilt)
DAE   Calibration Date	DAE4 Sn1787   2023-05-03	TSL Type	HBBL-600-10000
Software Version	16.2.4.2524		

## Scans Setup

	Area Scan	Zoom Scan
Grid Extents [mm]	40.0 x 80.0	30.0 x 30.0 x 30.0
Grid Steps [mm]	10.0 x 10.0	5.0 x 5.0 x 1.5
Sensor Surface [mm]	3.0	1.4
Graded Grid	N/A	Yes
M2/M1 [%]		76.9
Dist 3dB Peak [mm]		9.0

## Measurement Results

	Area Scan	Zoom Scan
psSAR1g [W/Kg]	4.74	5.06
psSAR10g [W/Kg]	2.30	2.43
Power Drift [dB]	N/A	-0.20



# System Performance Check Report for D1750V2 - SN1077

## Exposure Conditions

Frequency [MHz]   Channel Number	1750.000   0	TSL Permittivity	41.5
Group   UID	CW   0--	TSL Conductivity [S/m]	1.39
Conversion Factor	8.53	Phantom Section   TSL	Flat   HSL

## Hardware Setup

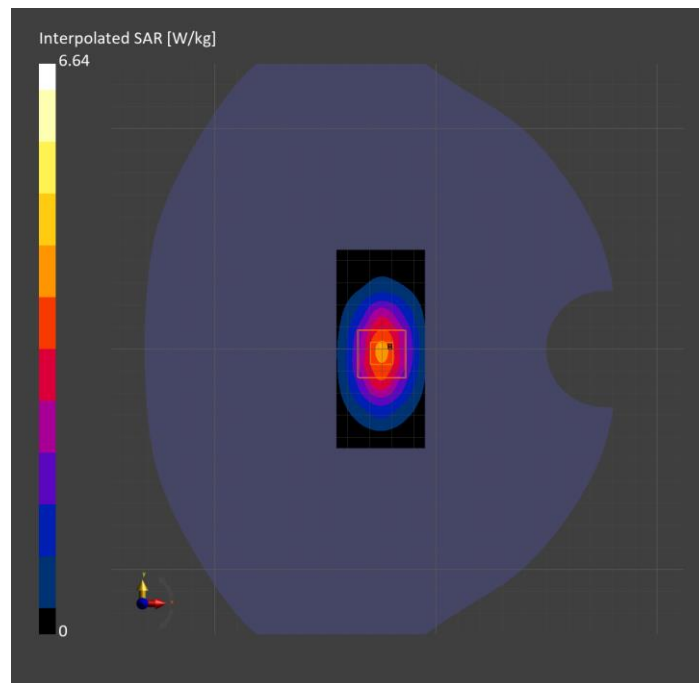
Probe   Calibration Date	EX3DV4 - SN7626   2023-05-15	Phantom	Twin-SAM V5.0 (30deg probe tilt)
DAE   Calibration Date	DAE4 Sn1548   2024-02-08	TSL Type	HBBL-600-10000
Software Version	16.2.4.2524		

## Scans Setup

	Area Scan	Zoom Scan
Grid Extents [mm]	40.0 x 90.0	30.0 x 30.0 x 30.0
Grid Steps [mm]	10.0 x 15.0	6.0 x 6.0 x 1.5
Sensor Surface [mm]	3.0	1.4
Graded Grid	N/A	Yes
M2/M1 [%]		78.9
Dist 3dB Peak [mm]		10.8

## Measurement Results

	Area Scan	Zoom Scan
psSAR1g [W/Kg]	3.30	3.40
psSAR10g [W/Kg]	1.77	1.81
Power Drift [dB]	N/A	-0.14



# System Performance Check Report for D1900V2 - SN5d140

## Exposure Conditions

Frequency [MHz]   Channel Number	1900.000   0	TSL Permittivity	41.0
Group   UID	CW   0--	TSL Conductivity [S/m]	1.31
Conversion Factor	7.96	Phantom Section   TSL	Flat   HSL

## Hardware Setup

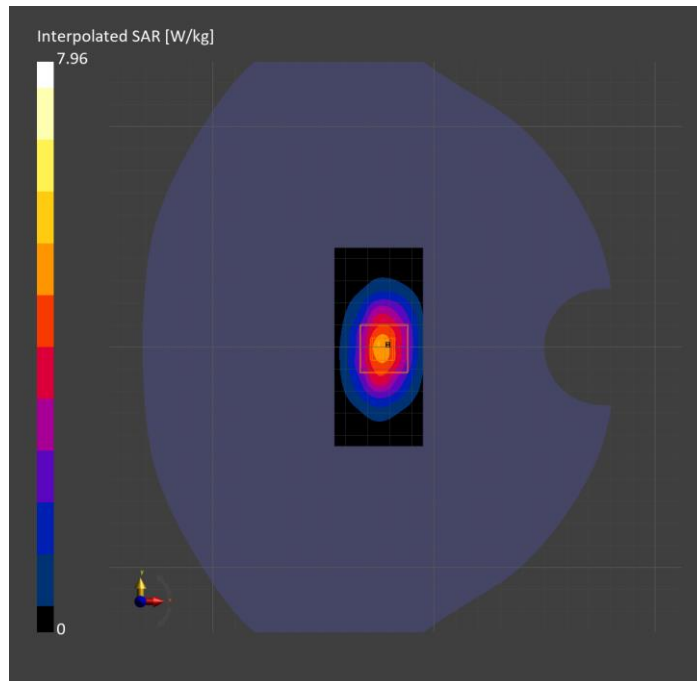
Probe   Calibration Date	EX3DV4 - SN7626   2023-05-15	Phantom	Twin-SAM V5.0 (30deg probe tilt)
DAE   Calibration Date	DAE4 Sn1548   2024-02-08	TSL Type	HBBL-600-10000
Software Version	16.2.4.2524		

## Scans Setup

	Area Scan	Zoom Scan
Grid Extents [mm]	40.0 x 90.0	30.0 x 30.0 x 30.0
Grid Steps [mm]	10.0 x 15.0	6.0 x 6.0 x 1.5
Sensor Surface [mm]	3.0	1.4
Graded Grid	N/A	Yes
M2/M1 [%]		81.0
Dist 3dB Peak [mm]		9.6

## Measurement Results

	Area Scan	Zoom Scan
psSAR1g [W/Kg]	4.09	<b>4.21</b>
psSAR10g [W/Kg]	2.12	<b>2.22</b>
Power Drift [dB]	N/A	-0.09



# System Performance Check Report for D1900V2 - SN5d163

## Exposure Conditions

Frequency [MHz]   Channel Number	1900.000   0	TSL Permittivity	41.4
Group   UID	CW   0--	TSL Conductivity [S/m]	1.32
Conversion Factor	7.96	Phantom Section   TSL	Flat   HSL

## Hardware Setup

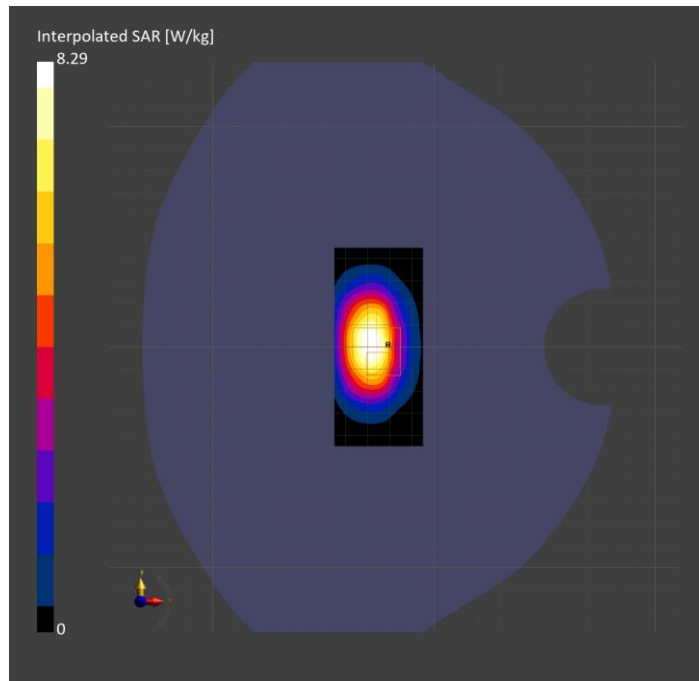
Probe   Calibration Date	EX3DV4 - SN7626   2023-05-15	Phantom	Twin-SAM V5.0 (30deg probe tilt)
DAE   Calibration Date	DAE4 Sn1548   2024-02-08	TSL Type	HBBL-600-10000
Software Version	16.2.4.2524		

## Scans Setup

	Area Scan	Zoom Scan
Grid Extents [mm]	40.0 x 90.0	30.0 x 30.0 x 30.0
Grid Steps [mm]	10.0 x 15.0	6.0 x 6.0 x 1.5
Sensor Surface [mm]	3.0	1.4
Graded Grid	N/A	Yes
M2/M1 [%]		79.2
Dist 3dB Peak [mm]		9.9

## Measurement Results

	Area Scan	Zoom Scan
psSAR1g [W/Kg]	4.40	4.17
psSAR10g [W/Kg]	2.36	2.12
Power Drift [dB]	N/A	-0.06





# System Performance Check Report for D2300V2 - SN1058

## Exposure Conditions

Frequency [MHz]   Channel Number	2300.000   0	TSL Permittivity	37.6
Group   UID	CW   0--	TSL Conductivity [S/m]	1.58
Conversion Factor	7.71	Phantom Section   TSL	Flat   HSL

## Hardware Setup

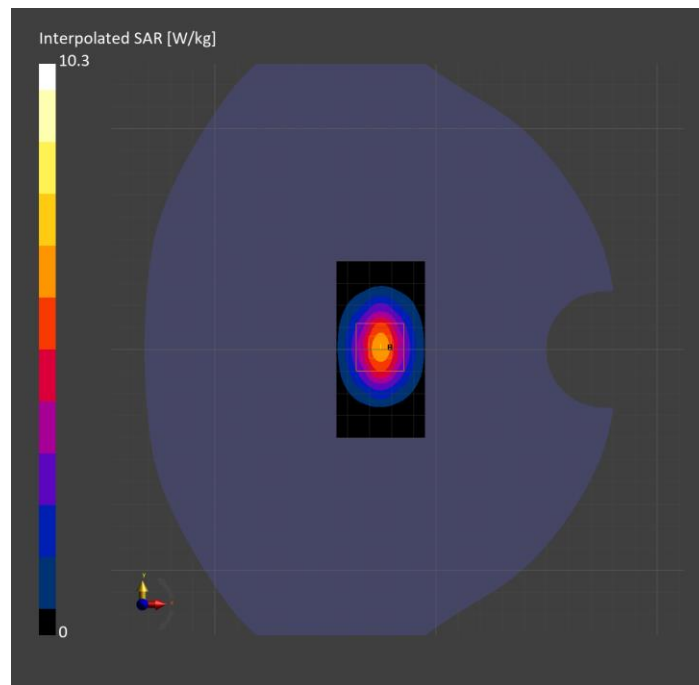
Probe   Calibration Date	EX3DV4 - SN7482   2023-04-18	Phantom	Twin-SAM V8.0 (30deg probe tilt)
DAE   Calibration Date	DAE4 Sn1546   2024-03-11	TSL Type	HBBL-600-10000
Software Version	16.2.4.2524		

## Scans Setup

	Area Scan	Zoom Scan
Grid Extents [mm]	40.0 x 80.0	30.0 x 30.0 x 30.0
Grid Steps [mm]	10.0 x 10.0	5.0 x 5.0 x 1.5
Sensor Surface [mm]	3.0	1.4
Graded Grid	N/A	Yes
M2/M1 [%]		81.4
Dist 3dB Peak [mm]		9.9

## Measurement Results

	Area Scan	Zoom Scan
psSAR1g [W/Kg]	5.28	<b>5.24</b>
psSAR10g [W/Kg]	2.55	<b>2.59</b>
Power Drift [dB]	N/A	-0.01



# System Performance Check Report for D2600V2 - SN1006

## Exposure Conditions

Frequency [MHz]   Channel Number	2600.000   0	TSL Permittivity	39.7
Group   UID	CW   0--	TSL Conductivity [S/m]	1.84
Conversion Factor	7.19	Phantom Section   TSL	Flat   HSL

## Hardware Setup

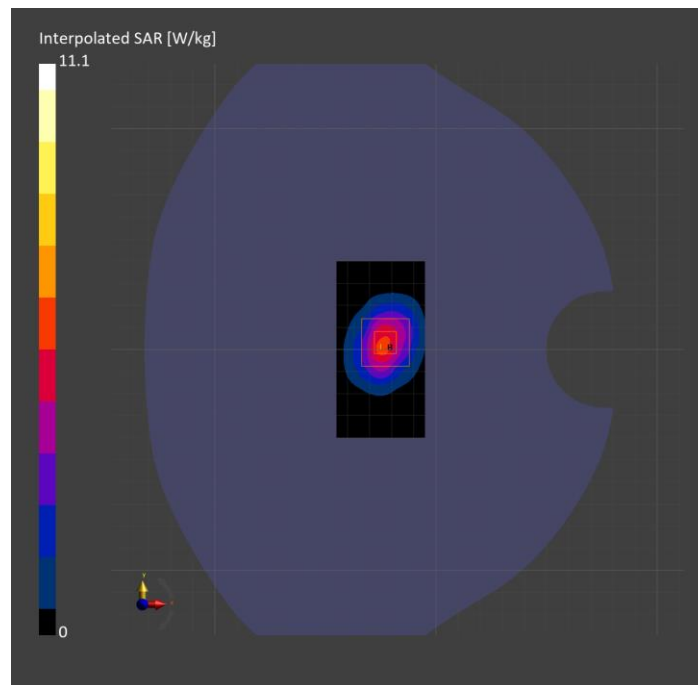
Probe   Calibration Date	EX3DV4 - SN7810   2023-04-25	Phantom	Twin-SAM V8.0 (30deg probe tilt)
DAE   Calibration Date	DAE4 Sn1546   2024-03-11	TSL Type	HBBL-600-10000
Software Version	16.2.4.2524		

## Scans Setup

	Area Scan	Zoom Scan
Grid Extents [mm]	40.0 x 80.0	30.0 x 30.0 x 30.0
Grid Steps [mm]	10.0 x 10.0	5.0 x 5.0 x 1.5
Sensor Surface [mm]	3.0	1.4
Graded Grid	N/A	Yes
M2/M1 [%]		77.2
Dist 3dB Peak [mm]		9.3

## Measurement Results

	Area Scan	Zoom Scan
psSAR1g [W/Kg]	4.56	5.12
psSAR10g [W/Kg]	2.10	2.39
Power Drift [dB]	N/A	-0.12



# System Performance Check Report for D3900V2 - SN1102

## Exposure Conditions

Frequency [MHz]   Channel Number	3900.000   0	TSL Permittivity	39.4
Group   UID	CW   0--	TSL Conductivity [S/m]	3.00
Conversion Factor	6.66	Phantom Section   TSL	Flat   HSL

## Hardware Setup

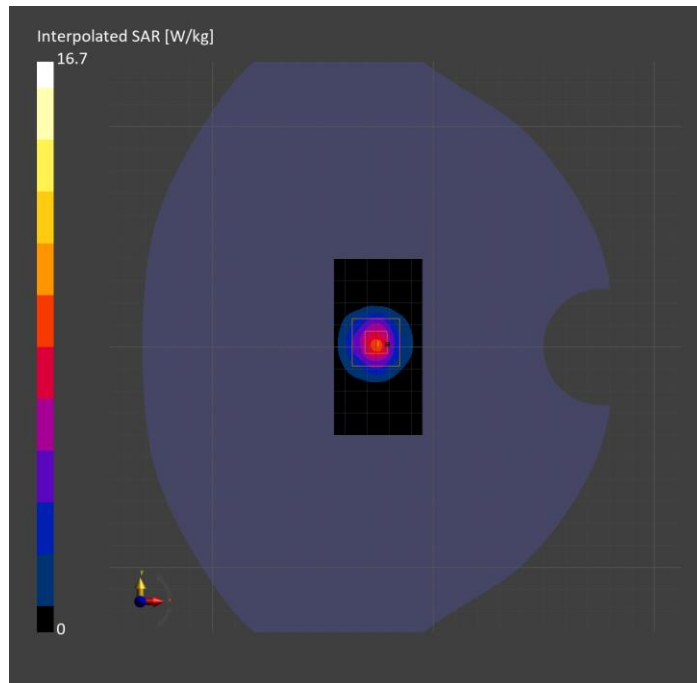
Probe   Calibration Date	EX3DV4 - SN3990   2024-02-28	Phantom	Twin-SAM V5.0 (30deg probe tilt)
DAE   Calibration Date	DAE4 Sn1239   2024-03-06	TSL Type	HBBL-600-10000
Software Version	16.2.4.2524		

## Scans Setup

	Area Scan	Zoom Scan
Grid Extents [mm]	40.0 x 80.0	28.0 x 28.0 x 28.0
Grid Steps [mm]	10.0 x 10.0	5.0 x 5.0 x 1.4
Sensor Surface [mm]	3.0	1.4
Graded Grid	N/A	Yes
M2/M1 [%]		75.3
Dist 3dB Peak [mm]		8.0

## Measurement Results

	Area Scan	Zoom Scan
psSAR1g [W/Kg]	6.16	6.29
psSAR10g [W/Kg]	2.24	2.34
Power Drift [dB]	N/A	-0.01



# System Performance Check Report for D5GHzV2 - SN1003

## Exposure Conditions

Frequency [MHz]   Channel Number	5250.000   0	TSL Permittivity	37.5
Group   UID	CW   0--	TSL Conductivity [S/m]	4.45
Conversion Factor	5.34	Phantom Section   TSL	Flat   HSL

## Hardware Setup

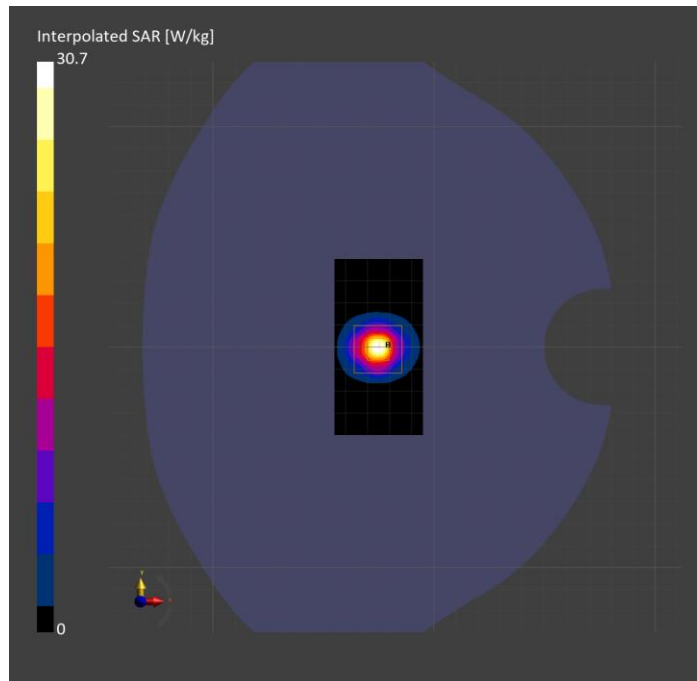
Probe   Calibration Date	EX3DV4 - SN3990   2024-02-28	Phantom	Twin-SAM V5.0 (30deg probe tilt)
DAE   Calibration Date	DAE4 Sn1239   2024-03-06	TSL Type	HBBL-600-10000
Software Version	16.2.4.2524		

## Scans Setup

	Area Scan	Zoom Scan
Grid Extents [mm]	40.0 x 80.0	22.0 x 22.0 x 22.0
Grid Steps [mm]	10.0 x 10.0	4.0 x 4.0 x 1.4
Sensor Surface [mm]	3.0	1.4
Graded Grid	N/A	Yes
M2/M1 [%]		68.3
Dist 3dB Peak [mm]		6.6

## Measurement Results

	Area Scan	Zoom Scan
psSAR1g [W/Kg]	8.09	8.42
psSAR10g [W/Kg]	2.32	2.49
Power Drift [dB]	N/A	0.08



# System Performance Check Report for D5GHzV2 - SN1003

## Exposure Conditions

Frequency [MHz]   Channel Number	5250.000   0	TSL Permittivity	37.5
Group   UID	CW   0--	TSL Conductivity [S/m]	4.45
Conversion Factor	5.34	Phantom Section   TSL	Flat   HSL

## Hardware Setup

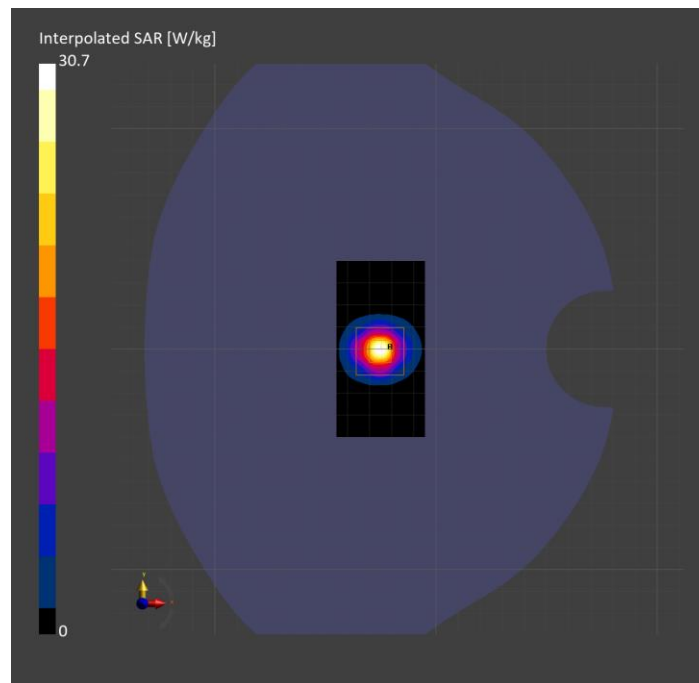
Probe   Calibration Date	EX3DV4 - SN3990   2024-02-28	Phantom	Twin-SAM V5.0 (30deg probe tilt)
DAE   Calibration Date	DAE4 Sn1239   2024-03-06	TSL Type	HBBL-600-10000
Software Version	16.2.4.2524		

## Scans Setup

	Area Scan	Zoom Scan
Grid Extents [mm]	40.0 x 80.0	22.0 x 22.0 x 22.0
Grid Steps [mm]	10.0 x 10.0	4.0 x 4.0 x 1.4
Sensor Surface [mm]	3.0	1.4
Graded Grid	N/A	Yes
M2/M1 [%]		68.3
Dist 3dB Peak [mm]		6.6

## Measurement Results

	Area Scan	Zoom Scan
psSAR1g [W/Kg]	8.09	8.42
psSAR10g [W/Kg]	2.32	2.49
Power Drift [dB]	N/A	0.08



# System Performance Check Report for D5GHzV2 - SN1168

## Exposure Conditions

Band		TSL Permittivity	37.0
Frequency [MHz]   Channel Number	5600.000   0	TSL Conductivity [S/m]	4.84
Group   UID	CW   0--	Phantom Section   TSL	Flat   HSL
Conversion Factor	4.7	Test Distance [mm]	

## Hardware Setup

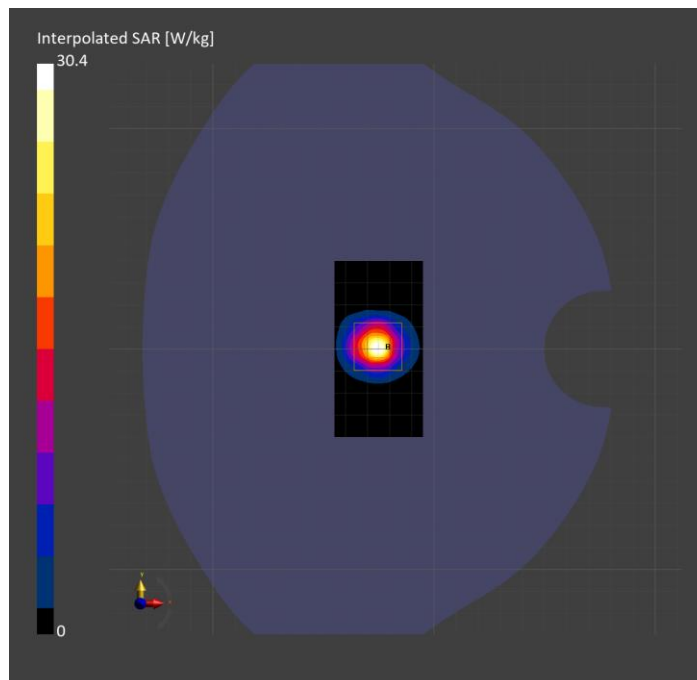
Probe   Calibration Date	EX3DV4 - SN3990   2024-02-28	Phantom	Twin-SAM V5.0 (30deg probe tilt)
DAE   Calibration Date	DAE4 Sn1239   2024-03-06	TSL Type	HBBL-600-10000
Software Version	16.2.4.2524		

## Scan Setup

	Area Scan	Zoom Scan
Grid Extents [mm]	40.0 x 80.0	22.0 x 22.0 x 22.0
Grid Steps [mm]	10.0 x 10.0	4.0 x 4.0 x 1.4
Sensor Surface [mm]	3.0	1.4
Graded Grid	N/A	Yes
M2/M1 [%]		66.3
Dist 3dB Peak [mm]		7.2
Peak SAR [W/kg]   SAR Peak Location [mm]	N/A	30.4   [-25.2, 1.0, -207.0]

## Measurement Results

	Area Scan	Zoom Scan
psSAR1g [W/Kg]	7.81	8.26
psSAR10g [W/Kg]	2.31	2.47
Power Drift [dB]	N/A	-0.04



# System Performance Check Report for D2600V2 - SN1006

## Exposure Conditions

Frequency [MHz]   Channel Number	2600.000   0	TSL Permittivity	41.0
Group   UID	CW   0--	TSL Conductivity [S/m]	1.84
Conversion Factor	7.03	Phantom Section   TSL	Flat   HSL

## Hardware Setup

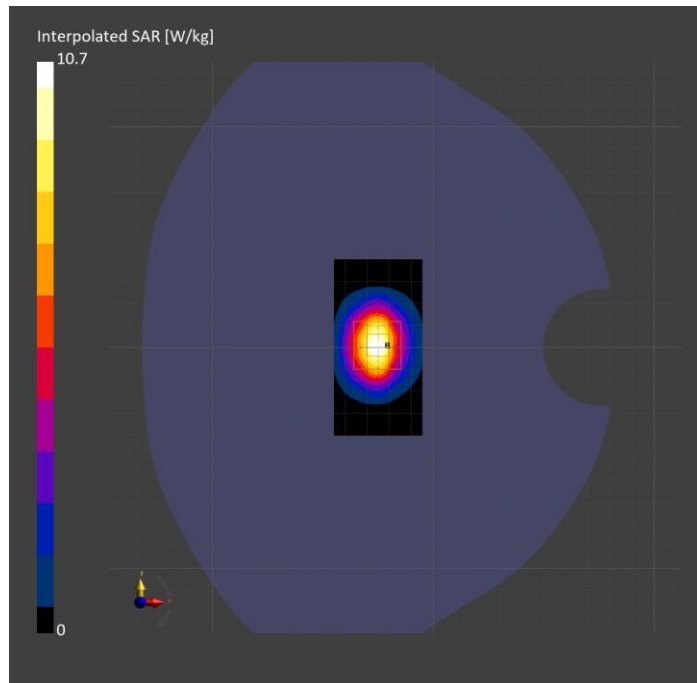
Probe   Calibration Date	EX3DV4 - SN3990   2024-02-28	Phantom	Twin-SAM V5.0 (30deg probe tilt)
DAE   Calibration Date	DAE4 Sn1239   2024-03-06	TSL Type	HBBL-600-10000
Software Version	16.2.4.2524		

## Scans Setup

	Area Scan	Zoom Scan
Grid Extents [mm]	40.0 x 80.0	30.0 x 30.0 x 30.0
Grid Steps [mm]	10.0 x 10.0	5.0 x 5.0 x 1.5
Sensor Surface [mm]	3.0	1.4
Graded Grid	N/A	Yes
M2/M1 [%]		80.2
Dist 3dB Peak [mm]		9.0

## Measurement Results

	Area Scan	Zoom Scan
psSAR1g [W/Kg]	5.18	5.12
psSAR10g [W/Kg]	2.35	2.32
Power Drift [dB]	N/A	-0.11



# System Performance Check Report for D2300V2 - SN1058

## Exposure Conditions

Frequency [MHz]   Channel Number	2300.000   0	TSL Permittivity	40.0
Group   UID	CW   0--	TSL Conductivity [S/m]	1.59
Conversion Factor	7.25	Phantom Section   TSL	Flat   HSL

## Hardware Setup

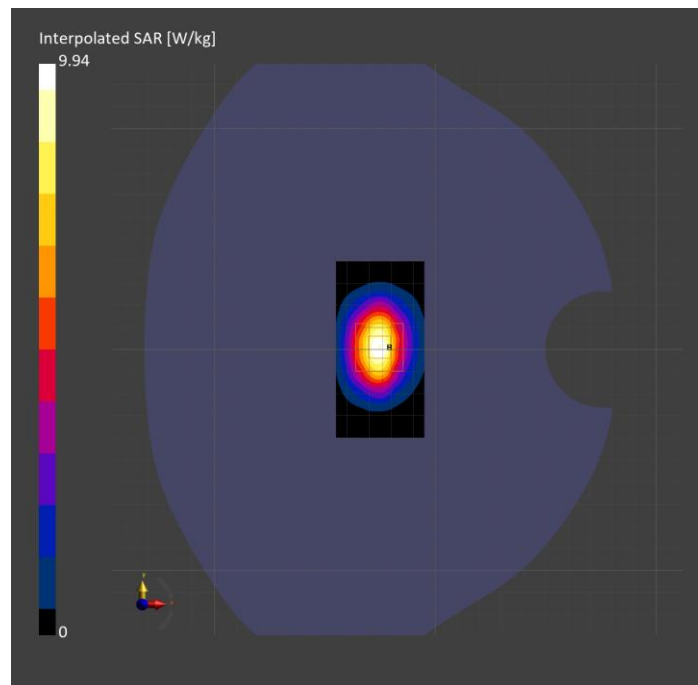
Probe   Calibration Date	EX3DV4 - SN3990   2024-02-28	Phantom	Twin-SAM V5.0 (30deg probe tilt)
DAE   Calibration Date	DAE4 Sn1239   2024-03-06	TSL Type	HBBL-600-10000
Software Version	16.2.4.2524		

## Scans Setup

	Area Scan	Zoom Scan
Grid Extents [mm]	40.0 x 80.0	30.0 x 30.0 x 30.0
Grid Steps [mm]	10.0 x 10.0	5.0 x 5.0 x 1.5
Sensor Surface [mm]	3.0	1.4
Graded Grid	N/A	Yes
M2/M1 [%]		82.3
Dist 3dB Peak [mm]		9.0

## Measurement Results

	Area Scan	Zoom Scan
psSAR1g [W/Kg]	5.28	5.11
psSAR10g [W/Kg]	2.52	2.53
Power Drift [dB]	N/A	-0.13





# System Performance Check Report for D6.5GHzV2 - SN1033

## Exposure Conditions

Frequency [MHz]   Channel Number	6500.000   0	TSL Permittivity	33.4
Group   UID	CW   0--	TSL Conductivity [S/m]	6.36
Conversion Factor	5.59	Phantom Section   TSL	Flat   HSL

## Hardware Setup

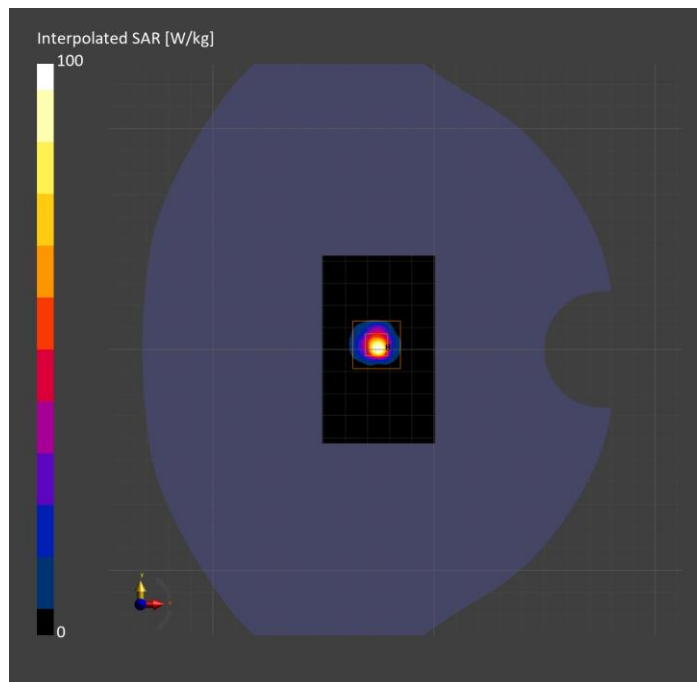
Probe   Calibration Date	EX3DV4 - SN7657   2023-05-30	Phantom	Twin-SAM V8.0 (30deg probe tilt)
DAE   Calibration Date	DAE4 Sn1545   2024-02-09	TSL Type	HBBL-600-10000
Software Version	16.2.4.2524		

## Scans Setup

	Area Scan	Zoom Scan
Grid Extents [mm]	51.0 x 85.0	22.0 x 22.0 x 22.0
Grid Steps [mm]	8.5 x 8.5	3.4 x 3.4 x 1.4
Sensor Surface [mm]	3.0	1.4
Graded Grid	N/A	Yes
M2/M1 [%]		51.6
Dist 3dB Peak [mm]		4.4

## Measurement Results

	Area Scan	Zoom Scan	APD
psSAR1g [W/Kg]	12.4	15.4	N/A
psSAR8g [W/Kg]	3.02	3.43	N/A
psSAR10g [W/Kg]	2.50	2.81	N/A
psAPD (4.0cm <sup>2</sup> , sq.) [W/m <sup>2</sup> ]	N/A	N/A	68.7
Power Drift [dB]	N/A	-0.16	N/A



# System Performance Check Report for D6.5GHzV2 - SN1033

## Exposure Conditions

Frequency [MHz]   Channel Number	6500.000   0	TSL Permittivity	33.8
Group   UID	CW   0--	TSL Conductivity [S/m]	6.02
Conversion Factor	5.77	Phantom Section   TSL	Flat   HSL

## Hardware Setup

Probe   Calibration Date	EX3DV4 - SN7356   2023-03-17	Phantom	Twin-SAM V8.0 (30deg probe tilt)
DAE   Calibration Date	DAE4 Sn1674   2023-05-11	TSL Type	HBBL-600-10000
Software Version	16.2.4.2524		

## Scans Setup

	Area Scan	Zoom Scan
Grid Extents [mm]	51.0 x 85.0	22.0 x 22.0 x 22.0
Grid Steps [mm]	8.5 x 8.5	3.4 x 3.4 x 1.4
Sensor Surface [mm]	3.0	1.4
Graded Grid	N/A	Yes
M2/M1 [%]		51.0
Dist 3dB Peak [mm]		4.4

## Measurement Results

	Area Scan	Zoom Scan	APD
psSAR1g [W/Kg]	27.3	31.2	N/A
psSAR8g [W/Kg]	6.41	6.98	N/A
psSAR10g [W/Kg]	5.30	5.72	N/A
psAPD (4.0cm <sup>2</sup> , sq.) [W/m <sup>2</sup> ]	N/A	N/A	140
Power Drift [dB]	N/A	0.03	N/A

