

System Check_Head_1750MHz_210309

Communication System: ; Frequency: 1750.0

Medium: HSL_1750_210309. Medium parameters used: $f= 1750.0$ MHz; $\sigma= 1.39$ S/m; $\epsilon_r = 40.4$

Ambient Temperature: 23.5°C; Liquid Temperature: 22.5°C

DASY6 Configuration:

- Probe: EX3DV4 - SN3642; ConvF(7.89, 7.89, 7.89); Calibrated: 2020-04-29
- Sensor-Surface: 1.4 mm
- Electronics: DAE4 Sn1647; Calibrated: 2021-01-07
- Phantom: Twin-SAM V4.0 (30deg probe tilt); Serial: 1489; Section: Flat
- Measurement Software: cDASY6 V6.6.0.13926
- UID: CW, 0--
- MAIA: Area Scan: N/A; Zoom Scan: N/A

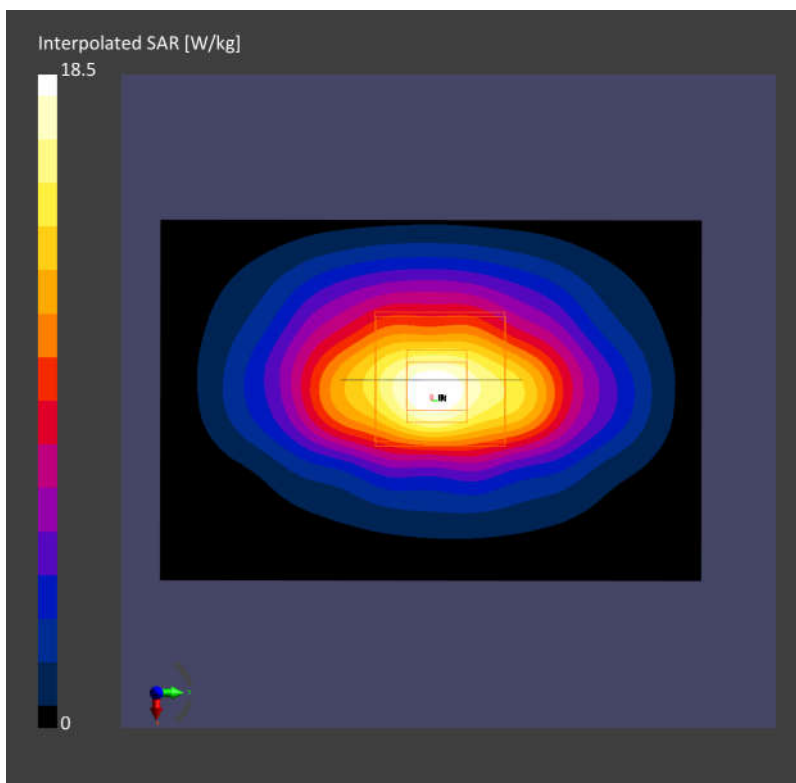
Area Scan (60.0 mm x 90.0 mm): Measurement Grid: 15.0 mm x 15.0 mm

SAR (1g) = 9.29 W/kg; SAR (10g) = 5.00 W/kg;

Zoom Scan (30.0 mm x 30.0 mm x 30.0 mm): Measurement Grid: 6.0 mm x 6.0 mm x 1.5 mm

Power Drift = -0.01 dB

SAR (1g) = 9.57 W/kg; SAR (10g) = 5.09 W/kg;



System Check_Head_1900MHz_210309

Communication System: ; Frequency: 1900.0

Medium: HSL_1900_210309 Medium parameters used: $f= 1900.0$ MHz; $\sigma= 1.43$ S/m; $\epsilon_r = 41.0$

Ambient Temperature: 23.5°C; Liquid Temperature: 22.5°C

DASY6 Configuration:

- Probe: EX3DV4 - SN3642; ConvF(7.75, 7.75, 7.75); Calibrated: 2020-04-29
- Sensor-Surface: 1.4 mm
- Electronics: DAE4 Sn1647; Calibrated: 2021-01-07
- Phantom: Twin-SAM V4.0 (30deg probe tilt); Serial: 1489; Section: Flat
- Measurement Software: cDASY6 V6.6.0.13926
- UID: CW, 0--
- MAIA: Area Scan: N/A; Zoom Scan: N/A

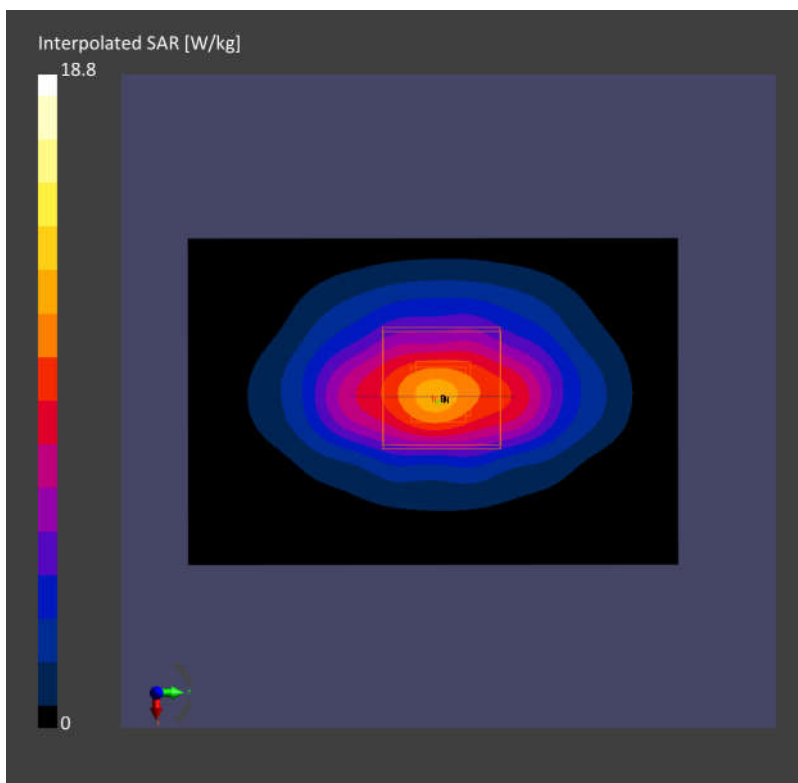
Area Scan (60.0 mm x 90.0 mm): Measurement Grid: 15.0 mm x 15.0 mm

SAR (1g) = 9.87 W/kg; SAR (10g) = 5.10 W/kg;

Zoom Scan (30.0 mm x 30.0 mm x 30.0 mm): Measurement Grid: 6.0 mm x 6.0 mm x 1.5 mm

Power Drift = -0.04 dB

SAR (1g) = 9.92 W/kg; SAR (10g) = 5.14 W/kg;



System Check_Head_2600MHz_210308

Communication System: ; Frequency: 2600.0

Medium: HSL_2600_210308 Medium parameters used: $f = 2600.0$ MHz; $\sigma = 1.95$ S/m; $\epsilon_r = 38.5$

Ambient Temperature: 23.5°C; Liquid Temperature: 22.5°C

DASY6 Configuration:

- Probe: EX3DV4 - SN3642; ConvF(6.95, 6.95, 6.95); Calibrated: 2020-04-29
- Sensor-Surface: 1.4 mm
- Electronics: DAE4 Sn1647; Calibrated: 2021-01-07
- Phantom: Twin-SAM V4.0 (30deg probe tilt); Serial: 1489; Section: Flat
- Measurement Software: cDASY6 V6.6.0.13926
- UID: CW, 0--
- MAIA: Area Scan: N/A; Zoom Scan: N/A

Area Scan (40.0 mm x 80.0 mm): Measurement Grid: 10.0 mm x 10.0 mm

SAR (1g) = 14.4 W/kg; SAR (10g) = 6.82 W/kg;

Zoom Scan (30.0 mm x 30.0 mm x 30.0 mm): Measurement Grid: 5.0 mm x 5.0 mm x 1.5 mm

Power Drift = 0.05 dB

SAR (1g) = 14.9 W/kg; SAR (10g) = 6.80 W/kg;

