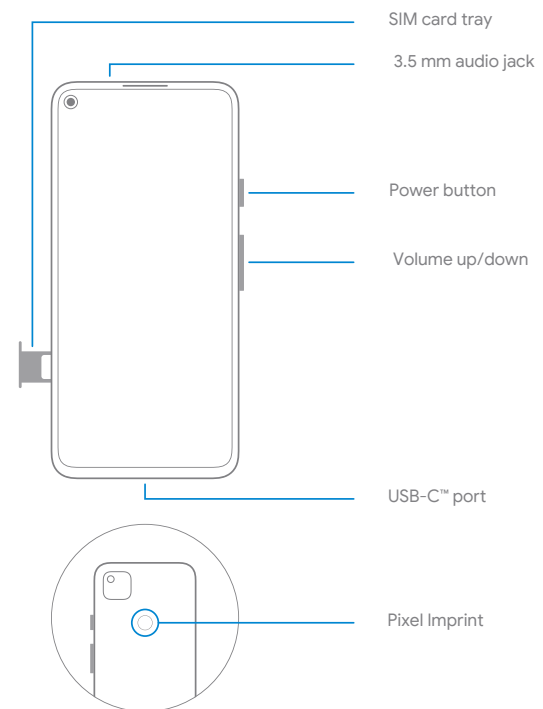


# English

## Meet your new Pixel



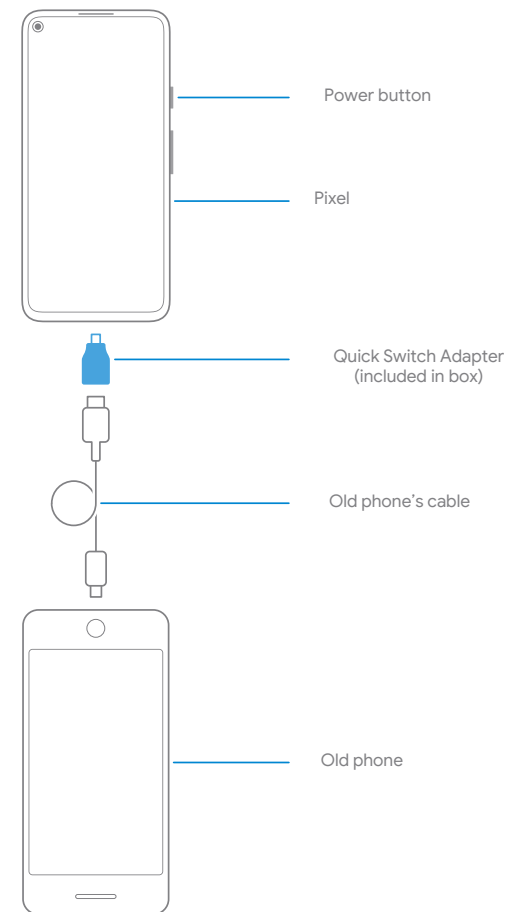
### Tips, new features, and help

On your phone, tap  
**Settings > Tips & support**  
For help transferring data, visit  
[g.co/datatransferhelp](https://g.co/datatransferhelp)  
For help with accessibility, visit  
[g.co/disabilitysupport](https://g.co/disabilitysupport)

Pixel, Google, and related marks and logos are trademarks of Google LLC. USB-C™ is a trademark of USB Implementers Forum.

## Set up your new Pixel

1. Press and hold the power button for 5 seconds to turn on your phone
2. Follow the on-screen steps to set up your phone



## Regulatory Information

The regulatory information, certification, and compliance marks specific to your phone can be found on your device under **Settings > About phone > Regulatory labels** and/or on the back of your phone. Additional regulatory and environmental information can be found at [g.co/pixel/reg](https://www.google.com/pixel/reg)

## Radio Frequency Exposure

Your phone has been evaluated and meets the applicable regulatory requirements for exposure to radio waves. It is designed and manufactured to not exceed the applicable emission limits for exposure to radio frequency (RF) energy.

Your phone complies with radio frequency specifications when used near your ear or at a distance of 0.4 in (1.0 cm) from your body. To reduce exposure to RF energy, use a hands-free option, such as the built-in speaker phone, the supplied headphones, or other similar accessories. Ensure that the device accessories, such as a device case and device holster, are not composed of metal components. Keep the device away from your body to meet the distance requirement.

You can learn more about radio frequency exposure at [.co/pixel/RFE](https://www.google.com/pixel/RFE) and on your device under **Settings > About phone > Safety & regulatory manual**

## FCC Regulatory Compliance

Note: This device has been tested and found to comply with the limits for a Class B digital device, pursuant to part 15 of the FCC Rules. These limits are designed to provide reasonable protection against harmful interference in a residential installation. This device generates, uses, and can radiate radio frequency energy and, if not installed and used in accordance with the instructions, may cause harmful interference to radio communications. However, there is no guarantee that interference will not occur in a particular installation. If the equipment does cause harmful interference to radio or television reception, which can be determined by turning the equipment off and on, try to correct the interference in one or more of the following ways:

- Reorient or relocate the receiving antenna
- Increase the separation between the equipment and receiver
- Connect the equipment into an outlet on a circuit different from that to which the receiver is connected
- Consult the dealer or an experienced radio/TV technician for help

Changes or modifications not expressly approved by Google could void your authority to operate the equipment.

## EMC Compliance Statement

Important: This device, power adapter, and other in-box accessories have demonstrated Electromagnetic Compatibility (EMC) compliance under conditions that included the use of compliant peripheral devices and shielded cables between system components. It's important that you use compliant peripheral devices and shielded cables between system components to reduce the possibility of causing interference to radios, televisions, and other electronic devices.

Model: G025J, G025N, G025M

Responsible Party:  
Google LLC  
1600 Amphitheatre Parkway, Mountain View, CA 94043  
[g.co/pixel/support](https://www.google.com/pixel/support)

This device complies with Part 15 of the FCC Rules. Operation is subject to the following 2 conditions:

- This device may not cause harmful interference
- This device must accept any interference received, including interference that may cause undesired operation

## Hearing Aid Compatibility (HAC)

Your device has been evaluated and certified to be compatible with hearing aids per technical specification ANSI C63.19. There are 2 measures of hearing aid compatibility:

- M rating, which is a measure of immunity to radio frequency interference for acoustic coupling hearing aids
- T rating, which is a measure of performance when used with an inductive coupling (telecoil) hearing aid.

Per FCC rules, a mobile phone is considered hearing aid compatible if rated M3 or M4 for acoustic coupling or T3 or T4 for inductive coupling.

Hearing aid compatible devices offered by Google:

- Pixel phone M3/T4

Your phone has been tested and rated for use with hearing aids for some of the wireless technologies that they use. However, there may be some newer wireless technologies used in these phones that have not yet been tested for use with hearing aids. It's important to try the different features of your phone thoroughly and in different locations, using your hearing aid or cochlear implant, to determine if you hear any interfering noise. Consult your service provider or Google for information on hearing aid compatibility. If you have questions about return or exchange policies, consult your service provider or phone retailer.