

Test Laboratory: Sporton International Inc.

Device Under Test Properties

Manufacturer	Dimensions [mm]	IMEI	DUT Type
	159.0 x 75.0 x 8.0		Phone

Exposure Conditions

Phantom Section	Position, Test Distance [mm]	Frequency [MHz]	Conversion Factor
5G	BACK, 2.00	60000.0	1.0

Hardware Setup

Phantom	Medium	Probe, Calibration Date	DAE, Calibration Date
5G Cover - xxxx	Air -	EUmmWV4 - SN9441, 2019-06-12	DAE4 Sn1399, 2018-11-16

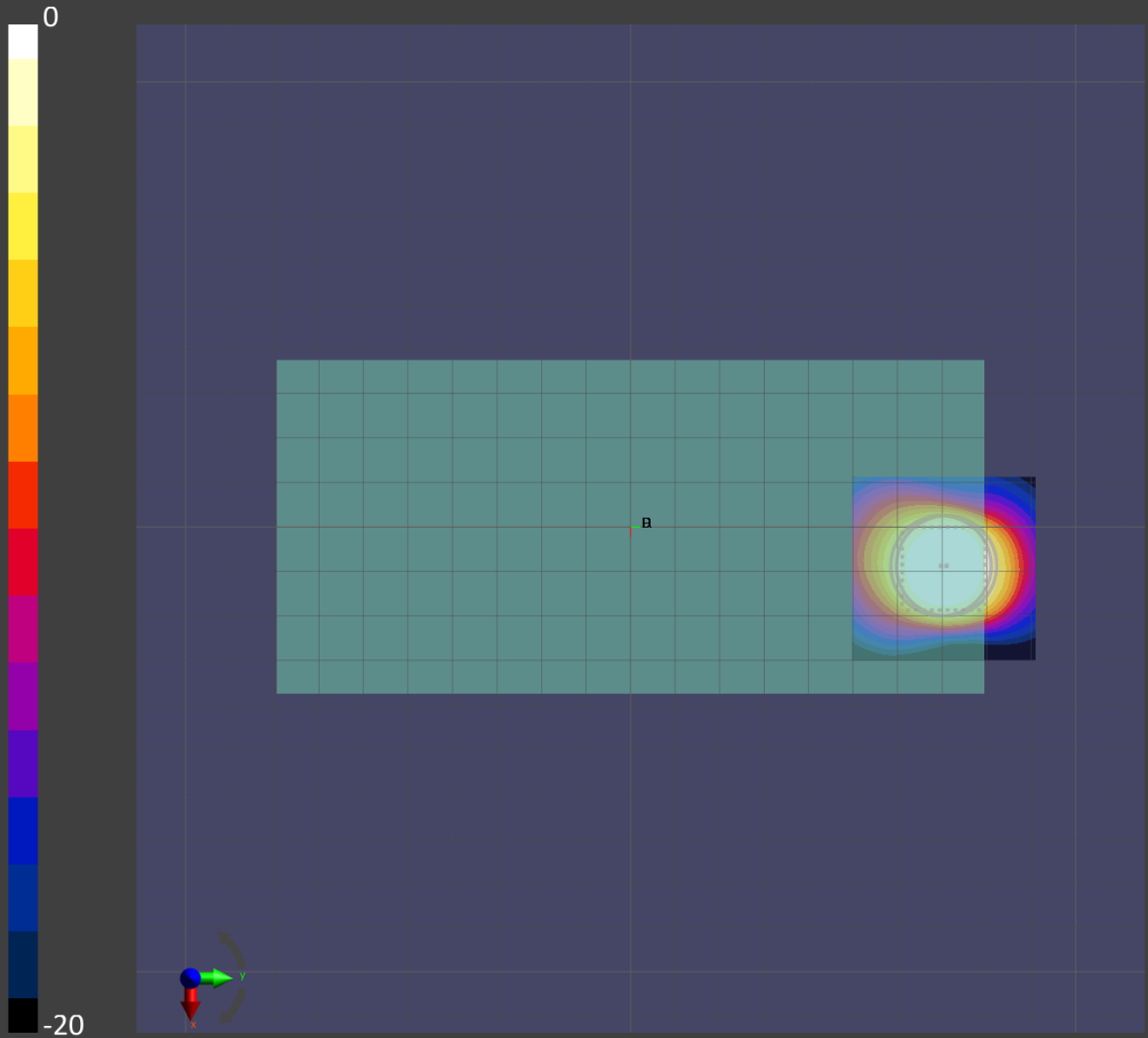
Scans Setup

Grid Extents [mm]	40.0 x 40.0
Grid Steps [lambda]	0.25 x 0.25
Sensor Surface [mm]	2.0

Measurement Results

Date	2019-07-08, 02:05
Avg. Area [cm ²]	4.00
S _{avg inc} [W/m ²]	1.45
S _{avg tot} [W/m ²]	2.29
S _{peak} [W/m ²]	24.4
E _{peak} [V/m]	98.1
H _{peak} [A/m]	0.249
Power Drift [dB]	-0.06

Averaged [4.0 cm²] |Re{S}|(x,y,z,f0) [dB(2.29W/m²)]



Test Laboratory: Sporton International Inc.

Device Under Test Properties

Manufacturer	Dimensions [mm]	IMEI	DUT Type
	159.0 x 75.0 x 8.0		Phone

Exposure Conditions

Phantom Section	Position, Test Distance [mm]	Frequency [MHz]	Conversion Factor
5G	FRONT, 10.00	60000.0	1.0

Hardware Setup

Phantom	Medium	Probe, Calibration Date	DAE, Calibration Date
5G Cover - xxxx	Air -	EUmmWV4 - SN9441, 2019-06-12	DAE4 Sn1399, 2018-11-16

Scans Setup

Grid Extents [mm]	40.0 x 40.0
Grid Steps [lambda]	0.25 x 0.25
Sensor Surface [mm]	10.0

Measurement Results

Date	2019-07-07, 23:52
Avg. Area [cm ²]	4.00
S _{avg inc} [W/m ²]	0.779
S _{avg tot} [W/m ²]	0.846
S _{peak} [W/m ²]	2.11
E _{peak} [V/m]	27.7
H _{peak} [A/m]	0.076
Power Drift [dB]	-0.11

Averaged [4.0 cm²] |Re{S}|(x,y,z,f0) [dB(0.846W/m²)]

