

## 20150309 SystemPerformanceCheck-D5GHzV2 SN 1168

Frequency: 5200 MHz; Duty Cycle: 1:1; Room Ambient Temperature: 24.0°C; Liquid Temperature: 23.0°C  
 Medium parameters used:  $f = 5200 \text{ MHz}$ ;  $\sigma = 4.594 \text{ S/m}$ ;  $\epsilon_r = 37.36$ ;  $\rho = 1000 \text{ kg/m}^3$

DASY5 Configuration:

- Area Scan Setting: Find Secondary Maximum Within: 2.0 dB and with a peak SAR value greater than 0.0012W/kg
- Electronics: DAE4 Sn1352; Calibrated: 11/7/2014
- Probe: EX3DV4 - SN3902; ConvF(5.3, 5.3, 5.3); Calibrated: 5/19/2014;
- Sensor-Surface: 1.4mm (Mechanical Surface Detection)
- Phantom: SAM; Type: QD000P40CD; Serial: TP 1751

**Head/5.2 GHz, Pin=100mW/Area Scan (7x7x1):** Measurement grid: dx=10mm, dy=10mm  
 Maximum value of SAR (measured) = 15.9 W/kg

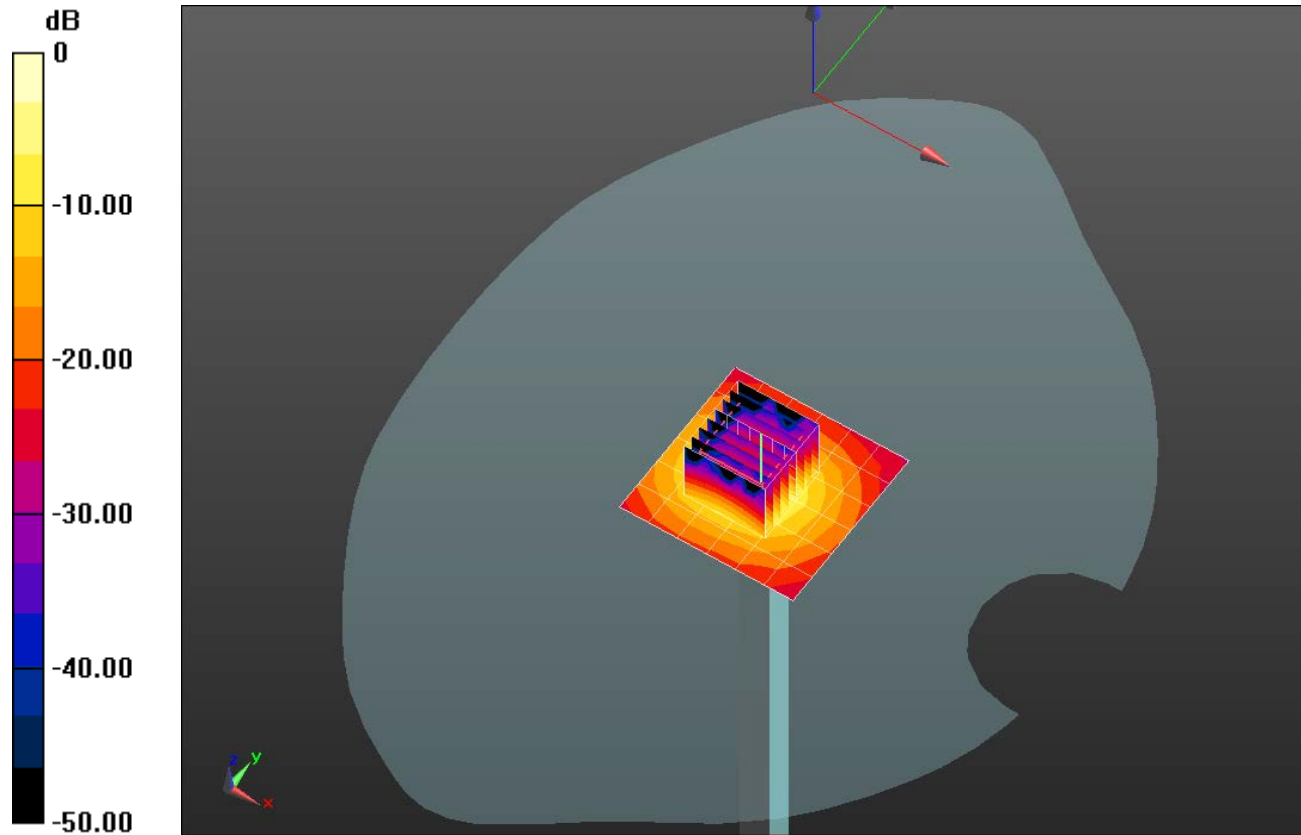
**Head/5.2 GHz, Pin=100mW/Zoom Scan (8x8x7)/Cube 0:** Measurement grid: dx=4mm, dy=4mm, dz=1.4mm

Reference Value = 51.902 V/m; Power Drift = 0.09 dB

Peak SAR (extrapolated) = 30.6 W/kg

**SAR(1 g) = 7.44 W/kg; SAR(10 g) = 2.12 W/kg**

Maximum value of SAR (measured) = 17.1 W/kg

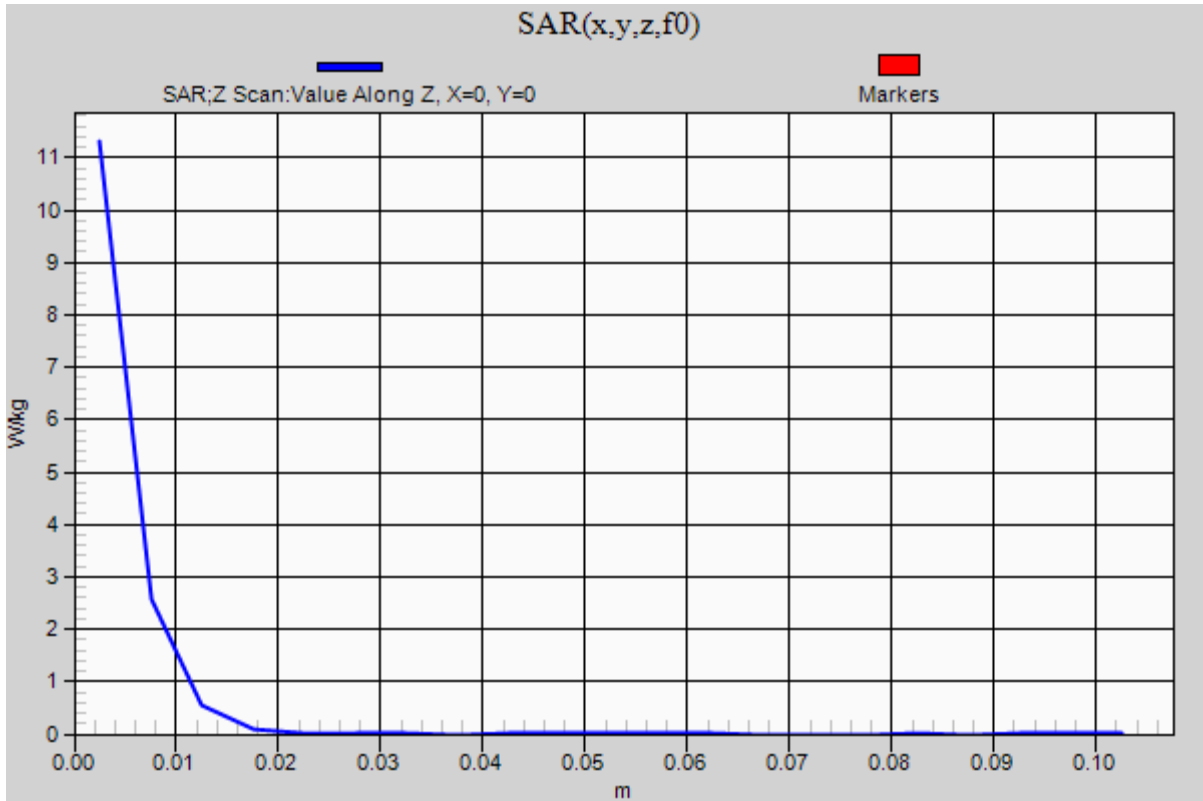


0 dB = 17.1 W/kg = 12.33 dBW/kg

### 20150309 SystemPerformanceCheck-D5GHzV2 SN 1168

Frequency: 5200 MHz; Duty Cycle: 1:1

**Head/5.2 GHz, Pin=100mW/Z Scan (1x1x21):** Measurement grid: dx=20mm, dy=20mm, dz=5mm  
Maximum value of SAR (measured) = 11.3 W/kg



## 20150312 SystemPerformanceCheck-D2450V2 SN 748

Frequency: 2450 MHz; Duty Cycle: 1:1; Room Ambient Temperature: 24.0°C; Liquid Temperature: 23.0°C

Medium parameters used:  $f = 2450$  MHz;  $\sigma = 1.824$  S/m;  $\epsilon_r = 39.12$ ;  $\rho = 1000$  kg/m<sup>3</sup>

DASY5 Configuration:

- Area Scan Setting: Find Secondary Maximum Within: 2.0 dB and with a peak SAR value greater than 0.0012W/kg
- Electronics: DAE4 Sn1352; Calibrated: 11/7/2014
- Probe: EX3DV4 - SN3902; ConvF(7.29, 7.29, 7.29); Calibrated: 5/19/2014;
- Sensor-Surface: 2.5mm (Mechanical Surface Detection)
- Phantom: SAM; Type: QD000P40CD; Serial: TP 1751

**Head/Pin=100 mW/Area Scan (8x8x1):** Measurement grid: dx=12mm, dy=12mm

Maximum value of SAR (measured) = 7.20 W/kg

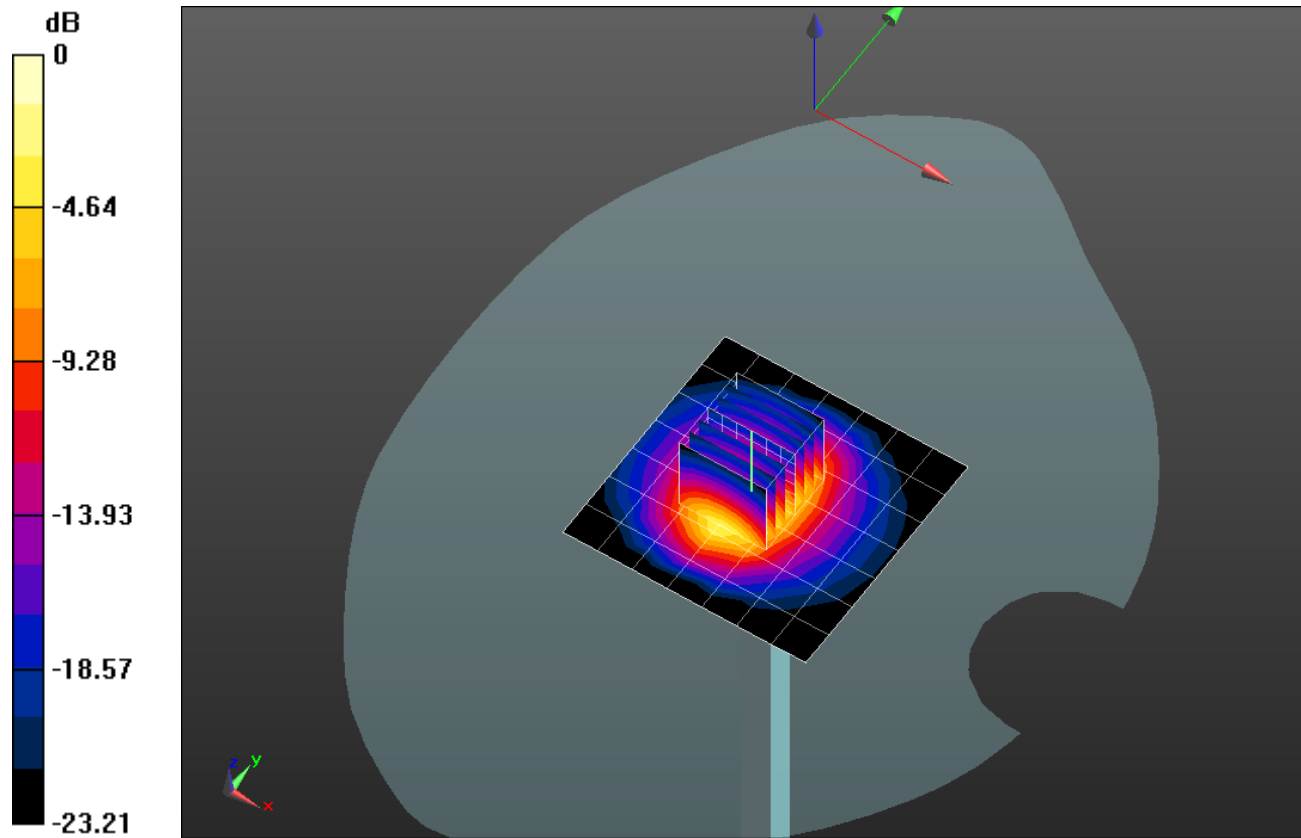
**Head/Pin=100 mW/Zoom Scan (7x7x7)/Cube 0:** Measurement grid: dx=5mm, dy=5mm, dz=5mm

Reference Value = 61.332 V/m; Power Drift = -0.14 dB

Peak SAR (extrapolated) = 11.8 W/kg

**SAR(1 g) = 5.46 W/kg; SAR(10 g) = 2.47 W/kg**

Maximum value of SAR (measured) = 7.91 W/kg

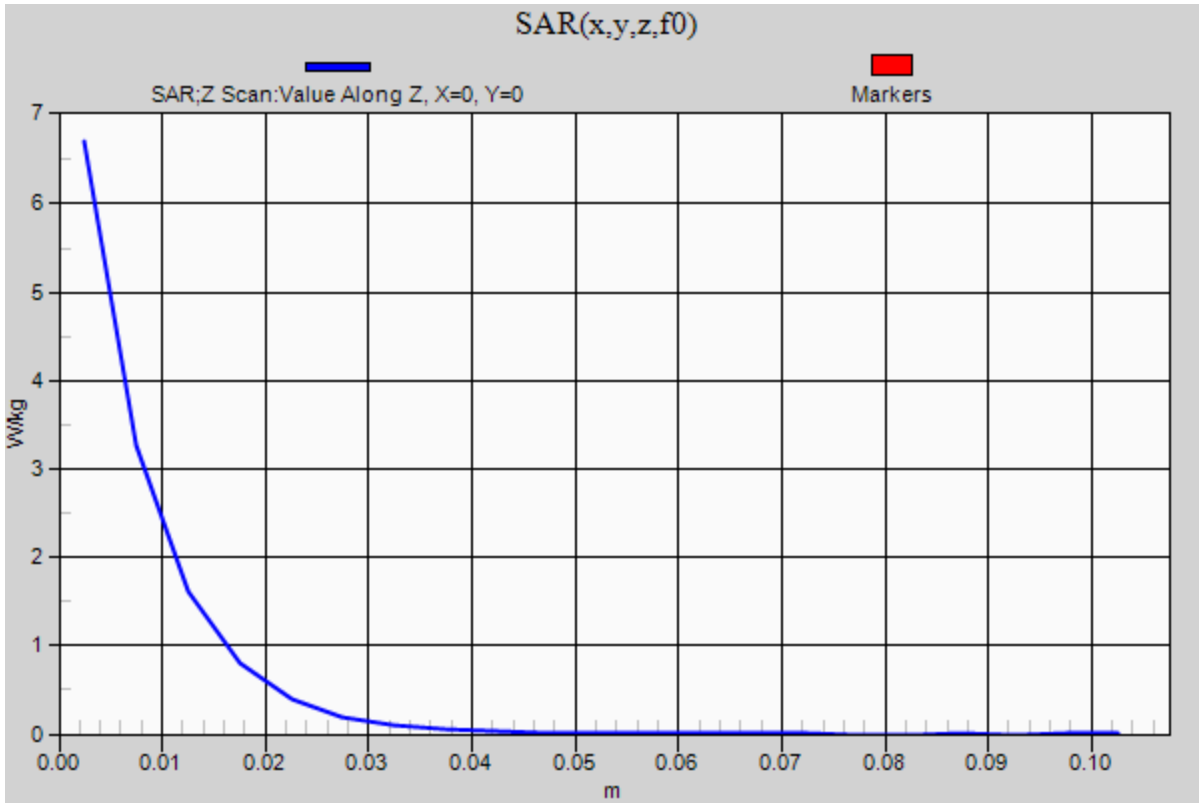


0 dB = 7.91 W/kg = 8.98 dBW/kg

### 20150312 SystemPerformanceCheck-D2450V2 SN 748

Frequency: 2450 MHz; Duty Cycle: 1:1

**Head/Pin=100 mW/Z Scan (1x1x21):** Measurement grid: dx=20mm, dy=20mm, dz=5mm  
Maximum value of SAR (measured) = 6.71 W/kg



## 20150408 SystemPerformanceCheck-D5GHzV2 SN 1168

Frequency: 5200 MHz; Duty Cycle: 1:1; Room Ambient Temperature: 24.0°C; Liquid Temperature: 23.0°C  
 Medium parameters used:  $f = 5200 \text{ MHz}$ ;  $\sigma = 4.643 \text{ S/m}$ ;  $\epsilon_r = 37.774$ ;  $\rho = 1000 \text{ kg/m}^3$

DASY5 Configuration:

- Area Scan Setting: Find Secondary Maximum Within: 2.0 dB and with a peak SAR value greater than 0.0012W/kg
- Electronics: DAE4 Sn1377; Calibrated: 8/27/2014
- Probe: EX3DV4 - SN3989; ConvF(5.3, 5.3, 5.3); Calibrated: 3/17/2015;
- Sensor-Surface: 1.4mm (Mechanical Surface Detection)
- Phantom: SAM with CRP; Type: SAM;

**Head/5.2 GHz, Pin=100mW/Area Scan (7x7x1):** Measurement grid: dx=10mm, dy=10mm  
 Maximum value of SAR (measured) = 15.2 W/kg

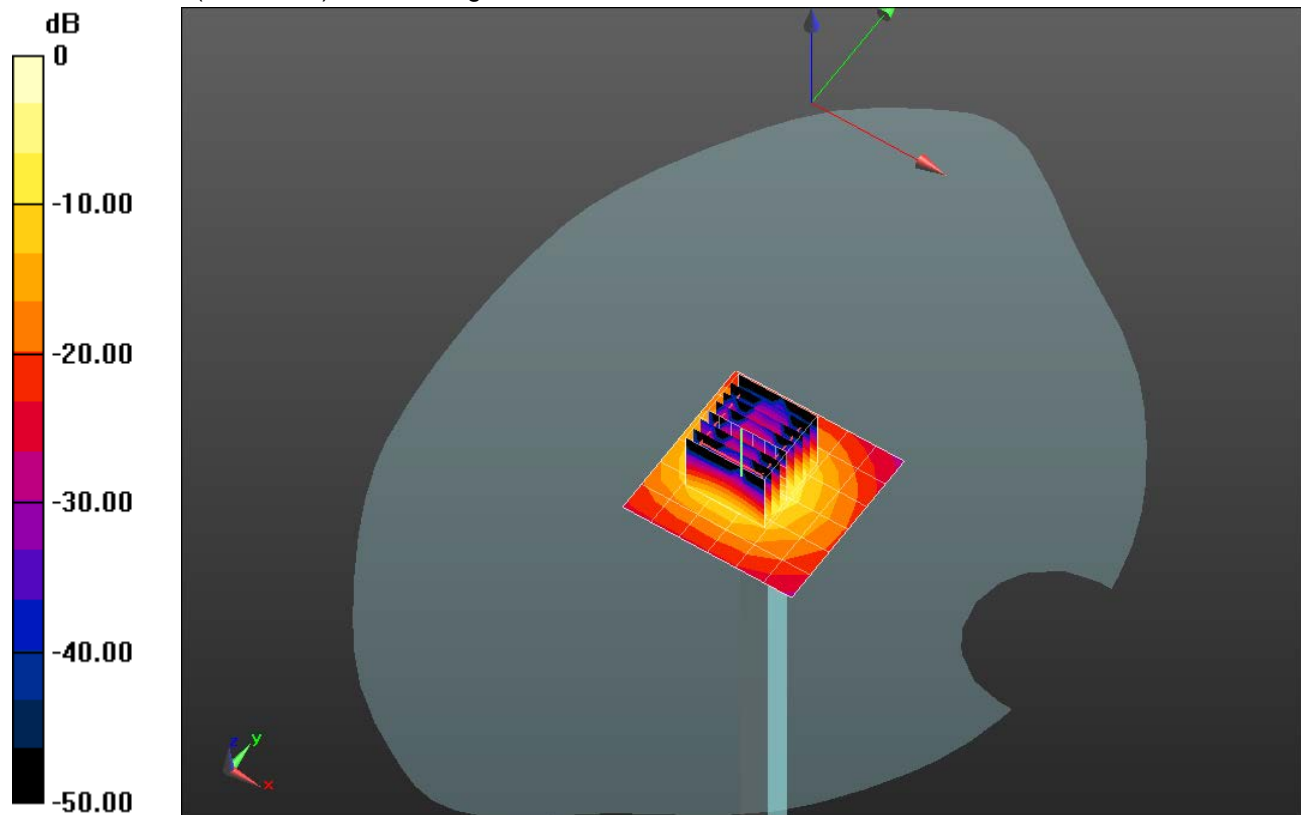
**Head/5.2 GHz, Pin=100mW/Zoom Scan (8x8x7)/Cube 0:** Measurement grid: dx=4mm, dy=4mm, dz=1.4mm

Reference Value = 49.43 V/m; Power Drift = 0.11 dB

Peak SAR (extrapolated) = 34.6 W/kg

**SAR(1 g) = 8.19 W/kg; SAR(10 g) = 2.34 W/kg**

Maximum value of SAR (measured) = 19.1 W/kg



0 dB = 19.1 W/kg = 12.81 dBW/kg

### 20150408 SystemPerformanceCheck-D5GHzV2 SN 1168

Frequency: 5200 MHz; Duty Cycle: 1:1

**Head/5.2 GHz, Pin=100mW/Z Scan (1x1x21):** Measurement grid: dx=20mm, dy=20mm, dz=5mm  
Maximum value of SAR (measured) = 10.2 W/kg

