

COMPANY NAME:

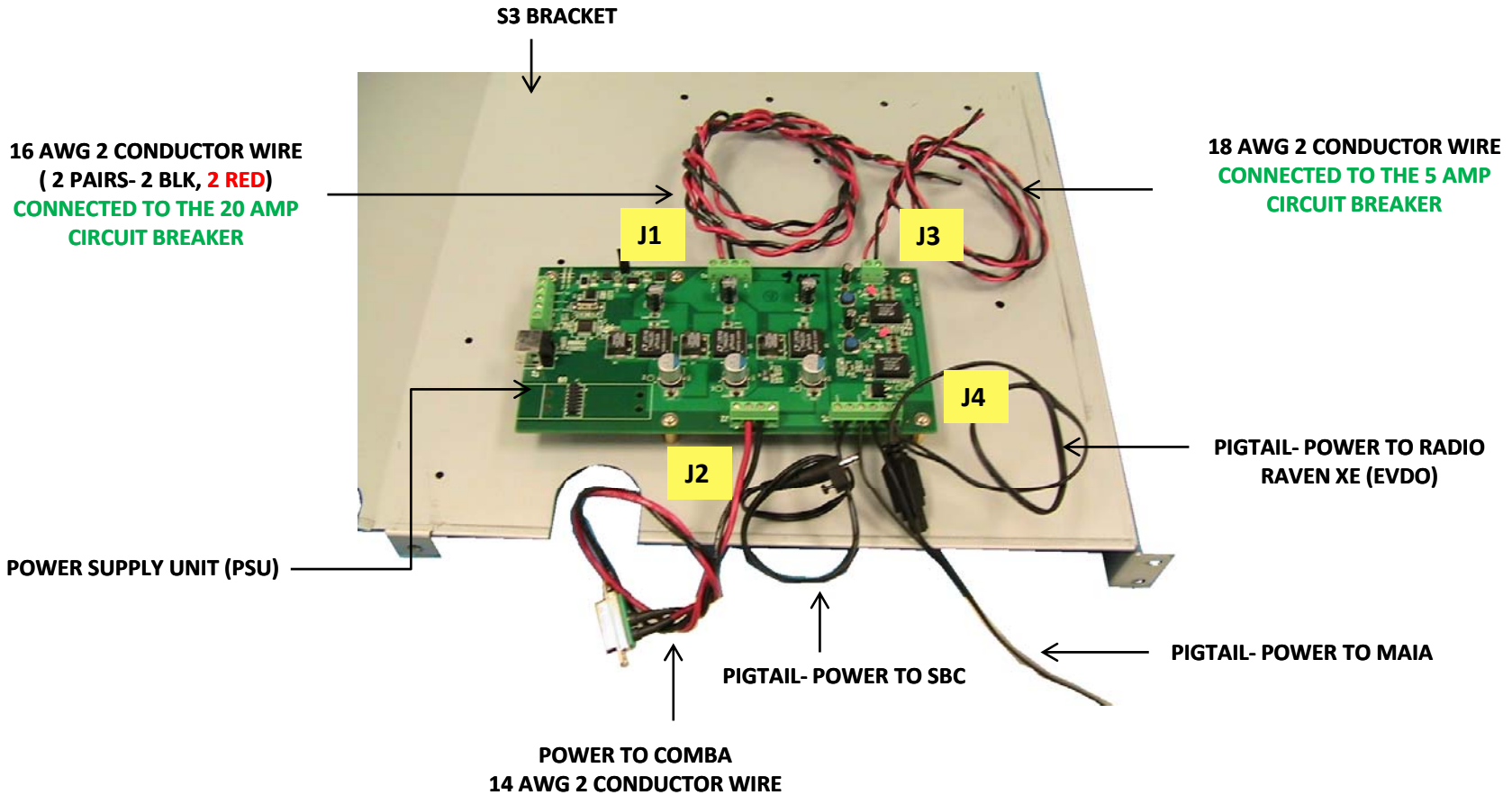


Address:  
41350 Christy Street  
Fremont, CA 94538  
Main: 510-440-0200  
Fax: 510-440-0201

**TITLE:**

# POWER SUPPLY WIRING

# NextNav, LLC



| PREPARED AND DOCUMENTED BY:<br>Dante L. Rusgal Jr.<br>Manufacturing Eng'g | Revision Level | DESCRIPTION OF CHANGE    | Approved by: | Date      | ASSY DOC NO: SCWI-086-18-FRE |
|---|----------------|--------------------------|--------------|-----------|------------------------------|
|   | A              | INITIAL DOCUMENT RELEASE | Dante        | 9.16.2011 |                              |
|   |                |                          |              |           |                              |

COMPANY NAME:



Address:  
41350 Christy Street  
Fremont, CA 94538  
Main: 510-440-0200  
Fax: 510-440-0201

**TITLE:**

# S1 CABLING ASSEMBLY

# NextNav, LLC



LMR195 to Panel (TX)

LMR195 to Panel (GPS)

Ferrite clamps (6x) on MAIA to Rb Breakout coax wires

Rb\_Breakout Board

PREPARED AND DOCUMENTED BY:  
Dante L. Rusgal Jr.  
Manufacturing Eng'g

Revision Level  
**A**

DESCRIPTION OF CHANGE  
**INITIAL DOCUMENT RELEASE**

Approved by:  
**Dante**

Date  
**9.16.2011**

ASSY DOC NO: SCWI-086-18-FRE

COMPANY NAME:



Address:  
41350 Christy Street  
Fremont, CA 94538  
Main: 510-440-0200  
Fax: 510-440-0201

**TITLE:**

# COMBA WIRING

# NextNav, LLC



- 1) RF IN= CONNECTED TO TX OUT OF MAIA
- 2) RF OUT= CONNECTED TO CAVITY FILTER (IN)
- 3) POWER IN= CONNECTED TO POWER SUPPLY UNIT (see details in next pages)
- 4) COMBA I/O= CONNECTED TO MAIA



| PREPARED AND DOCUMENTED BY:<br>Dante L. Rusgal Jr.<br>Manufacturing Eng'g | Revision Level | DESCRIPTION OF CHANGE    | Approved by: | Date      | ASSY DOC NO: SCWI-086-18-FRE |
|---|----------------|--------------------------|--------------|-----------|------------------------------|
|   | A              | INITIAL DOCUMENT RELEASE | Dante        | 9.16.2011 |                              |
|   |                |                          |              |           |                              |
|   |                |                          |              |           |                              |

COMPANY NAME:



Address:  
41350 Christy Street  
Fremont, CA 94538  
Main: 510-440-0200  
Fax: 510-440-0201

**TITLE:**

# CAVITY FILTER INSTALLATION

## NextNav, LLC

FROM RF IN of COMBA  
SMA 90 deg male end  
to end (LMR 195)



CAVITY FILTER

**INSTRUCTION:**

Install CAVITY FILTER where shown (on the S2 bracket). Connect RF cable from RF in of COMBA

| PREPARED AND DOCUMENTED BY:<br>Dante L. Rusgal Jr.<br>Manufacturing Eng'g | Revision Level | DESCRIPTION OF CHANGE    | Approved by: | Date      | ASSY DOC NO: SCWI-086-18-FRE |
|---|----------------|--------------------------|--------------|-----------|------------------------------|
|   | A              | INITIAL DOCUMENT RELEASE | Dante        | 9.16.2011 |                              |
|   |                |                          |              |           |                              |

COMPANY NAME:



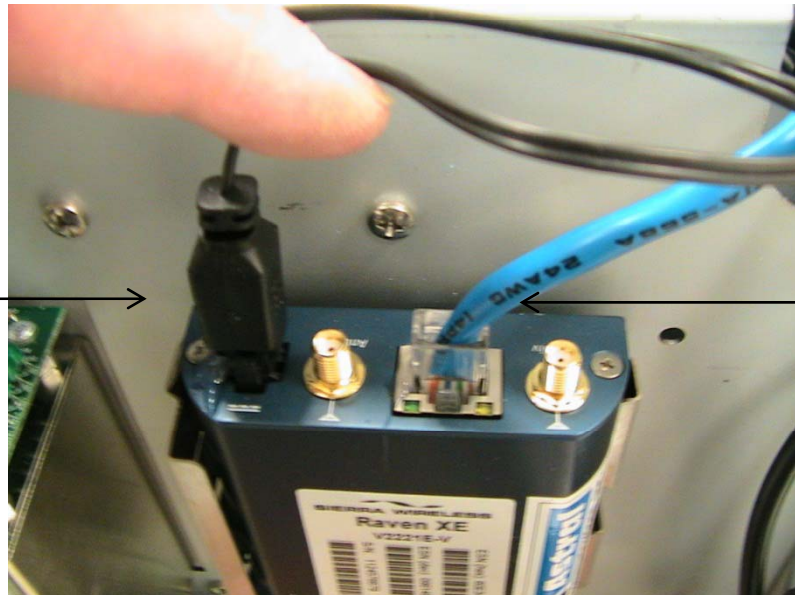
Address:  
41350 Christy Street  
Fremont, CA 94538  
Main: 510-440-0200  
Fax: 510-440-0201

**TITLE:**

**RADIO WIRING**

**NextNav, LLC**

RADIO Power Pigtail  
End is connected to  
the POWER SUPPLY  
UNIT (PSU)



CAT5= Connected to the  
ETHERNET SWITCH

| PREPARED AND DOCUMENTED BY:<br>Dante L. Rusgal Jr.<br>Manufacturing Eng'g | Revision Level | DESCRIPTION OF CHANGE    | Approved by: | Date      | ASSY DOC NO: SCWI-086-18-FRE |
|---|----------------|--------------------------|--------------|-----------|------------------------------|
|   | A              | INITIAL DOCUMENT RELEASE | Dante        | 9.16.2011 |                              |
|   |                |                          |              |           |                              |
|   |                |                          |              |           |                              |

COMPANY NAME:

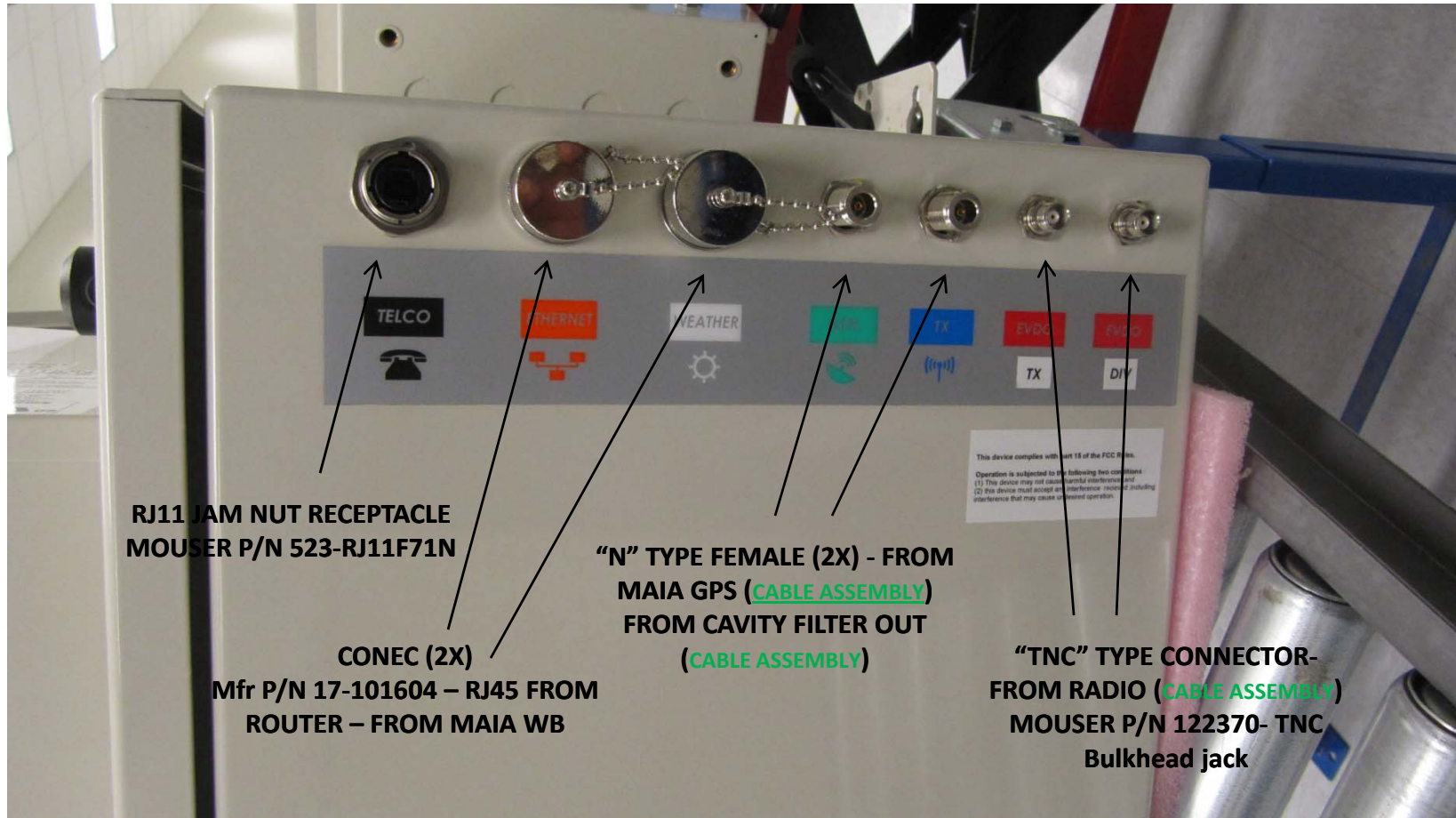


Address:  
41350 Christy Street  
Fremont, CA 94538  
Main: 510-440-0200  
Fax: 510-440-0201

**TITLE:**

**PANEL MOUNT  
INSTALLATION**

**NextNav, LLC**



**RJ11 JAM NUT RECEPTACLE  
MOUSER P/N 523-RJ11F71N**

**CONEC (2X)  
Mfr P/N 17-101604 - RJ45 FROM  
ROUTER - FROM MAIA WB**

**"N" TYPE FEMALE (2X) - FROM  
MAIA GPS (CABLE ASSEMBLY)  
FROM CAVITY FILTER OUT  
(CABLE ASSEMBLY)**

**"TNC" TYPE CONNECTOR-  
FROM RADIO (CABLE ASSEMBLY)  
MOUSER P/N 122370- TNC  
Bulkhead jack**

This device complies with part 15 of the FCC Rules.  
Operation is subject to the following two conditions:  
(1) This device may not cause harmful interference, and  
(2) this device must accept any interference received including interference that may cause undesired operation.

|   |                |                          |              |           |                              |
|---|----------------|--------------------------|--------------|-----------|------------------------------|
| PREPARED AND DOCUMENTED BY:<br>Dante L. Rusgal Jr.<br>Manufacturing Eng'g | Revision Level | DESCRIPTION OF CHANGE    | Approved by: | Date      | ASSY DOC NO: SCWI-086-18-FRE |
|   | A              | INITIAL DOCUMENT RELEASE | Dante        | 9.16.2011 |                              |
|   |                |                          |              |           |                              |

COMPANY NAME:



Address:  
41350 Christy Street  
Fremont, CA 94538  
Main: 510-440-0200  
Fax: 510-440-0201

**TITLE**

**BATTERY COMPARTMENT  
WIRING**

**NextNav, LLC**

MAIN Power Switch

AC MAIN Power Line  
Input Terminal  
(Ground-Line-Neutral)



| PREPARED AND DOCUMENTED BY:<br>Dante L. Rusgal Jr.<br>Manufacturing Eng'g | Revision Level | DESCRIPTION OF CHANGE    | Approved by: | Date      | ASSY DOC NO: SCWI-086-18-FRE |
|---|----------------|--------------------------|--------------|-----------|------------------------------|
|   | A              | INITIAL DOCUMENT RELEASE | Dante        | 9.16.2011 |                              |
|   |                |                          |              |           |                              |
|   |                |                          |              |           |                              |

COMPANY NAME:



Address:  
41350 Christy Street  
Fremont, CA 94538  
Main: 510-440-0200  
Fax: 510-440-0201

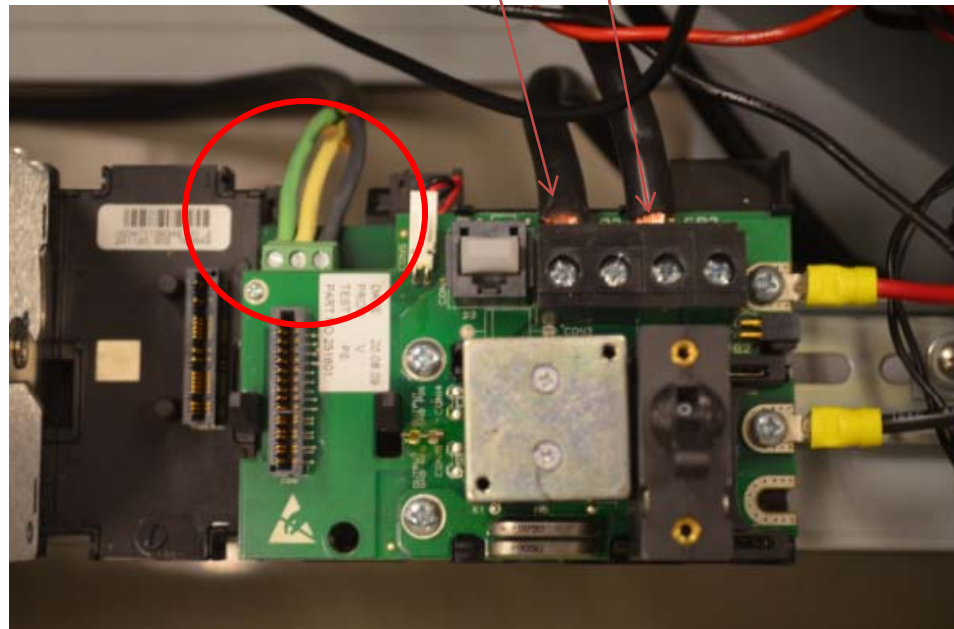
**TITLE:**

# ROUTING OF WIRES

# NextNav, LLC

BATTERY LEADS

POS      NEG



← To DC DIN Rail  
Terminal Blocks and  
Breaker Switches

**Instruction (LINE POWER SUPPLY):**

Supply power to the whole system (16 AWG) 3 conductor wire. Strip conductor ends and insert in the wire positions as shown

| PREPARED AND DOCUMENTED BY:<br>Dante L. Rusgal Jr.<br>Manufacturing Eng'g | Revision Level | DESCRIPTION OF CHANGE    | Approved by: | Date      | ASSY DOC NO: SCWI-086-18-FRE |
|---|----------------|--------------------------|--------------|-----------|------------------------------|
|   | A              | INITIAL DOCUMENT RELEASE | Dante        | 9.16.2011 |                              |
|   |                |                          |              |           |                              |



COMPANY NAME:



Address:  
41350 Christy Street  
Fremont, CA 94538  
Main: 510-440-0200  
Fax: 510-440-0201

**TITLE:**

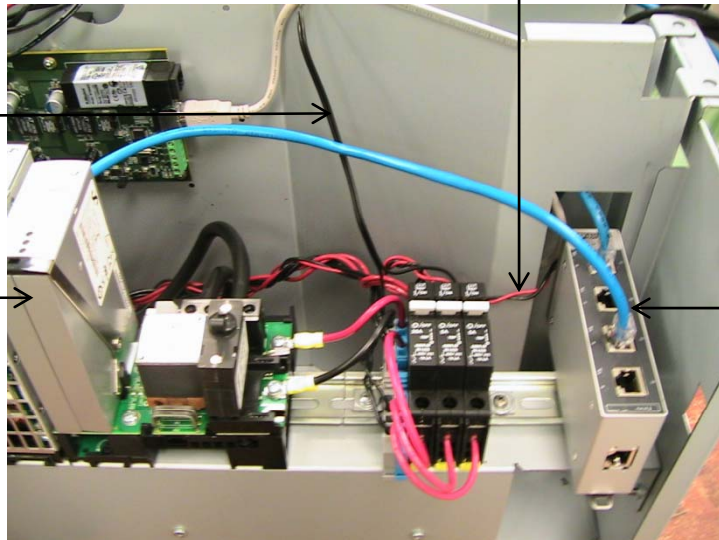
# ROUTING OF WIRES

# NextNav, LLC

Wiring to supply power to the Ethernet SW

24 VDC POWER TO THE RUBIDIUM

MICROPACK



ETHERNET CABLE BETWEEN MICROPACK AND ETHERNET SWITCH

**INSTRUCTION:**

Wires, cables must be run neatly and tie wrap along the "half circle cut-outs" as shown. Conductor wires (red/ black) should be twisted

| PREPARED AND DOCUMENTED BY:<br>Dante L. Rusgal Jr.<br>Manufacturing Eng'g | Revision Level | DESCRIPTION OF CHANGE    | Approved by: | Date      | ASSY DOC NO: SCWI-086-18-FRE |
|---|----------------|--------------------------|--------------|-----------|------------------------------|
|   | A              | INITIAL DOCUMENT RELEASE | Dante        | 9.16.2011 |                              |
|   |                |                          |              |           |                              |

COMPANY NAME:

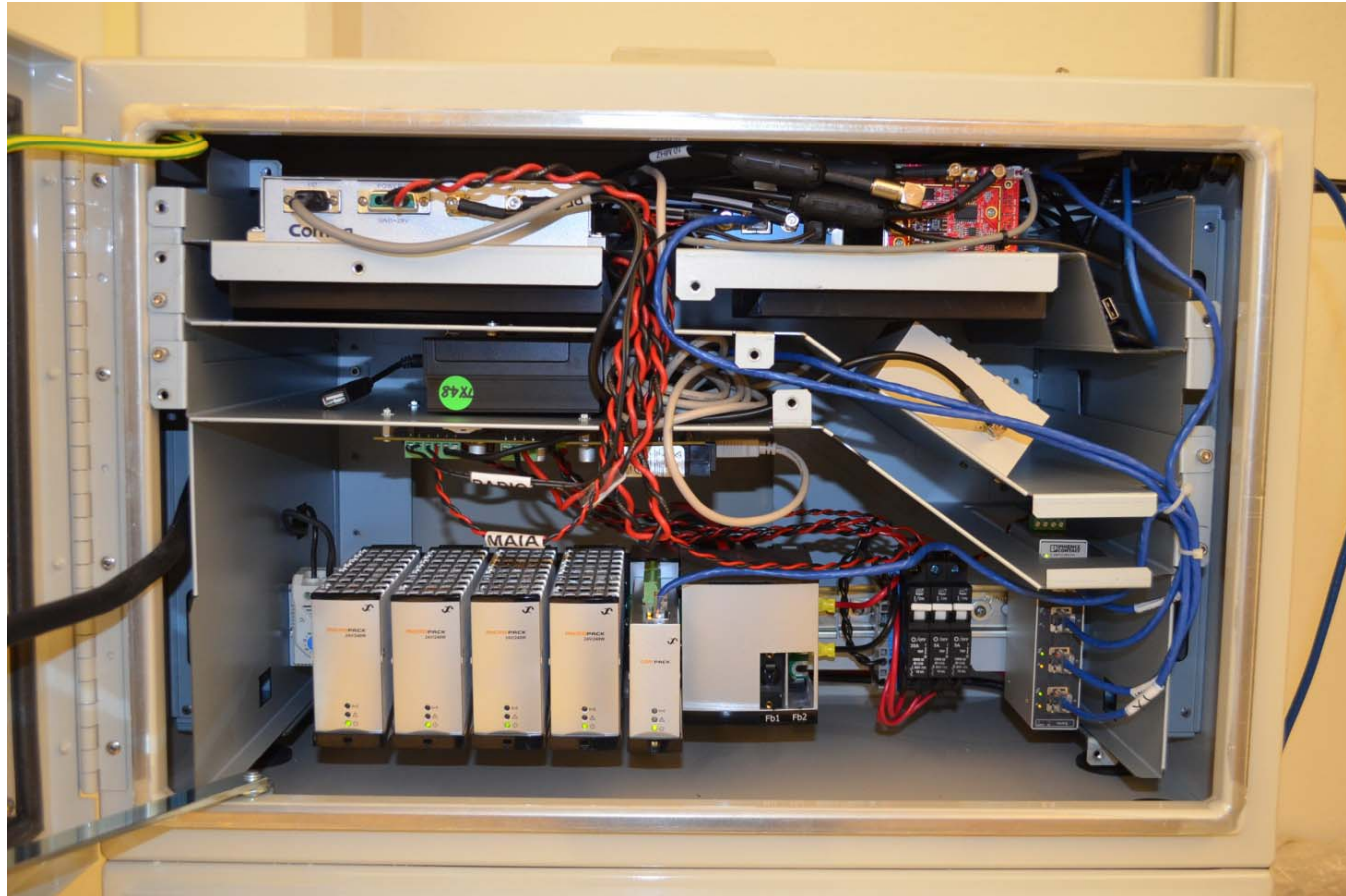


Address:  
41350 Christy Street  
Fremont, CA 94538  
Main: 510-440-0200  
Fax: 510-440-0201

**TITLE:**

**WIRING COMPLETE**

*Commlabs, Inc.*



PREPARED AND  
DOCUMENTED BY:  
Dante L. Rusgal Jr.  
Manufacturing Eng'g

Revision Level

A

DESCRIPTION OF CHANGE

INITIAL DOCUMENT RELEASE

Approved by:

Dante

Date

9.16.2011

ASSY DOC NO: SCWI-086-18-FRE