

Annex B. EUT AND TEST SETUP PHOTOGRAPHS

Annex B. i. Photograph 1: EUT External Photo



Whole Package - Top View



iCtrl.M1P58-2- Top View



iCtrl.M1P58-2- Bottom View



Lift Actuator- Top View



Lift Actuator - Bottom View



Recline Actuator- Top View



Recline Actuator- Bottom View



Adapter View



Adapter Label View



RemoP20- Top View



RemoP20- Bottom View



SIEMIC, INC.

Accessing global markets

Title: RF Test Report for Bluetooth Control System
Main Model: iCtrl.M1P58
Main Model: iCtrl.M1P5, iCtrl.M1P8, iCtrl.M1RP5, iCtrl.M1RP8
To: FCC 15.247: 2013, ANSI C63.4: 2009

Report No: 13020926-FCC-R1
Issue Date: May 19, 2014
Page: 70 of 104
www.siemec.com.cn



HX35- Top View



HX35- Bottom View



HX29- Top View



HX29- Bottom View



HX24- Top View



HX24- Bottom View



HX36H- Top View



iCtrl-HX36H- Bottom View



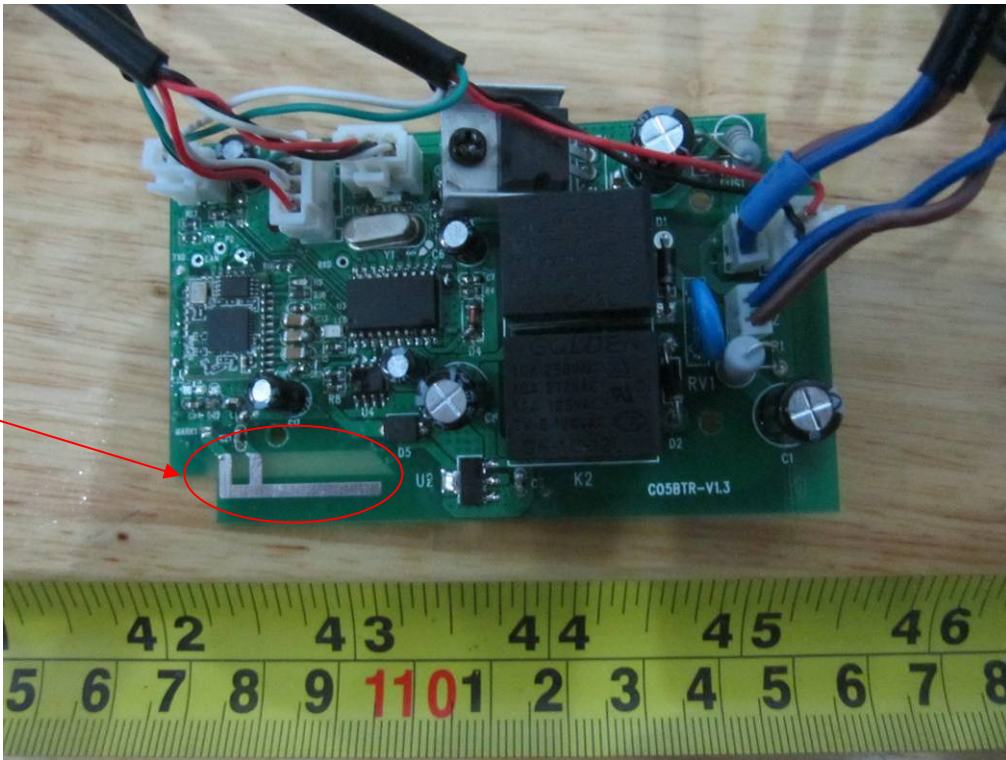
Remo Button- Top View

Annex B.ii. Photograph 2: EUT Internal Photo

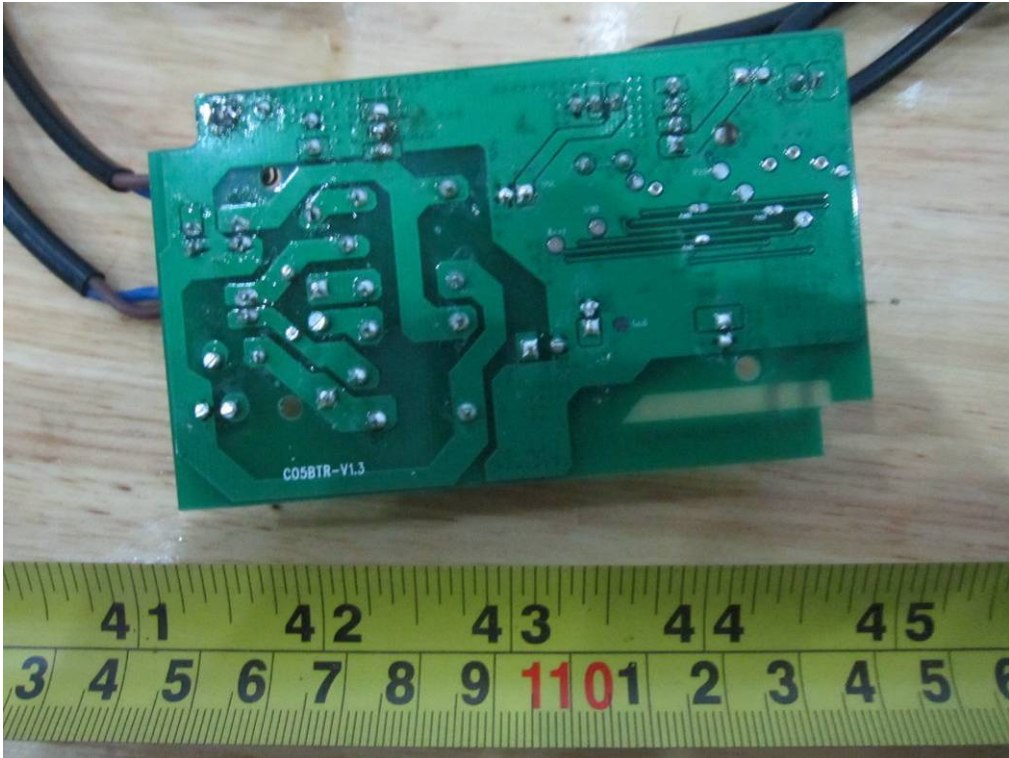


iCtrl.M1P58-2– Uncover View

Bluetooth
Antenna



iCtrl. M1P58-2– Main Board Top View



iCtrl. M1P58-2- Main Board Bottom View



Lift Actuator- Uncover View



Lift Actuator - Motor View



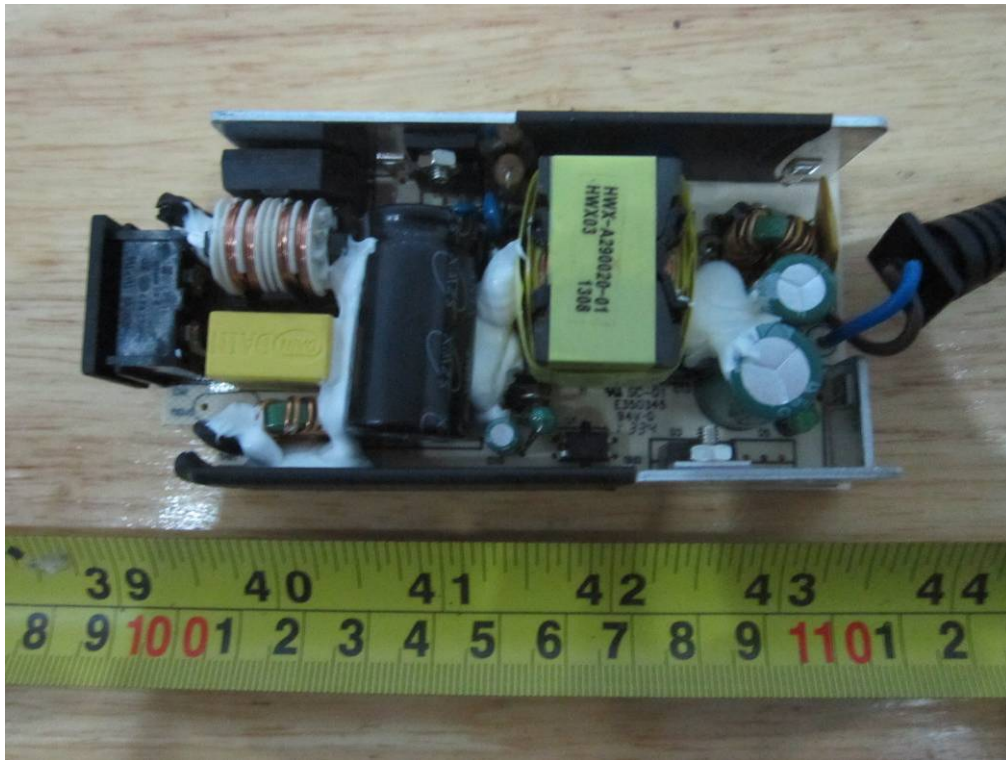
Recline Actuator-- Uncover View



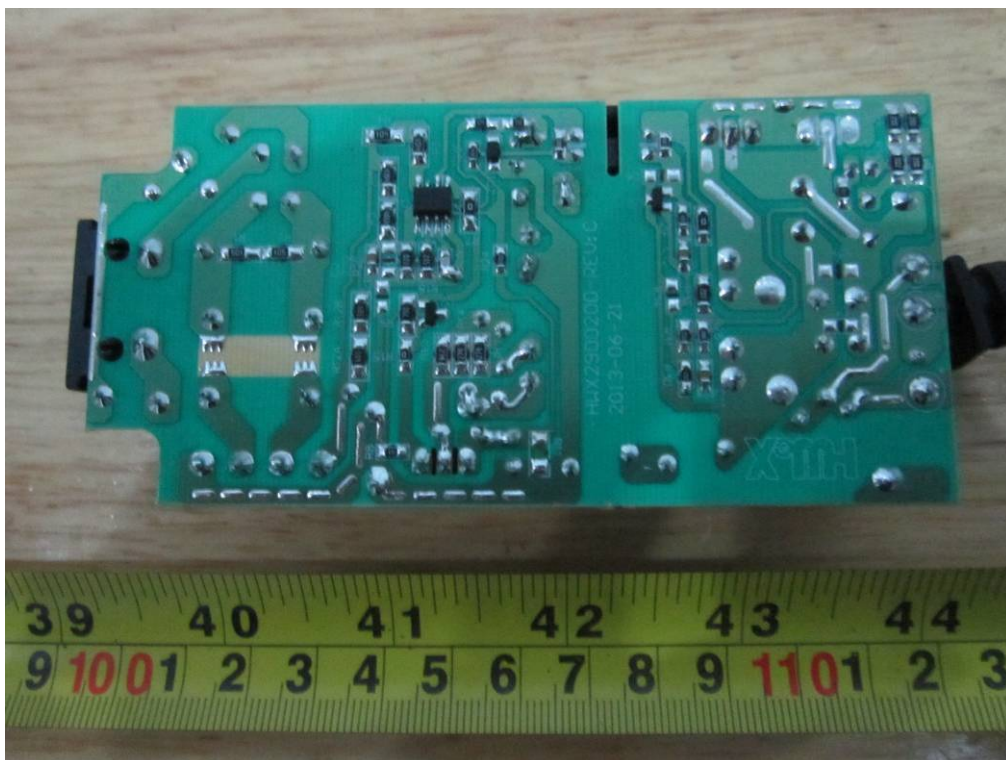
Recline Actuator- Motor View



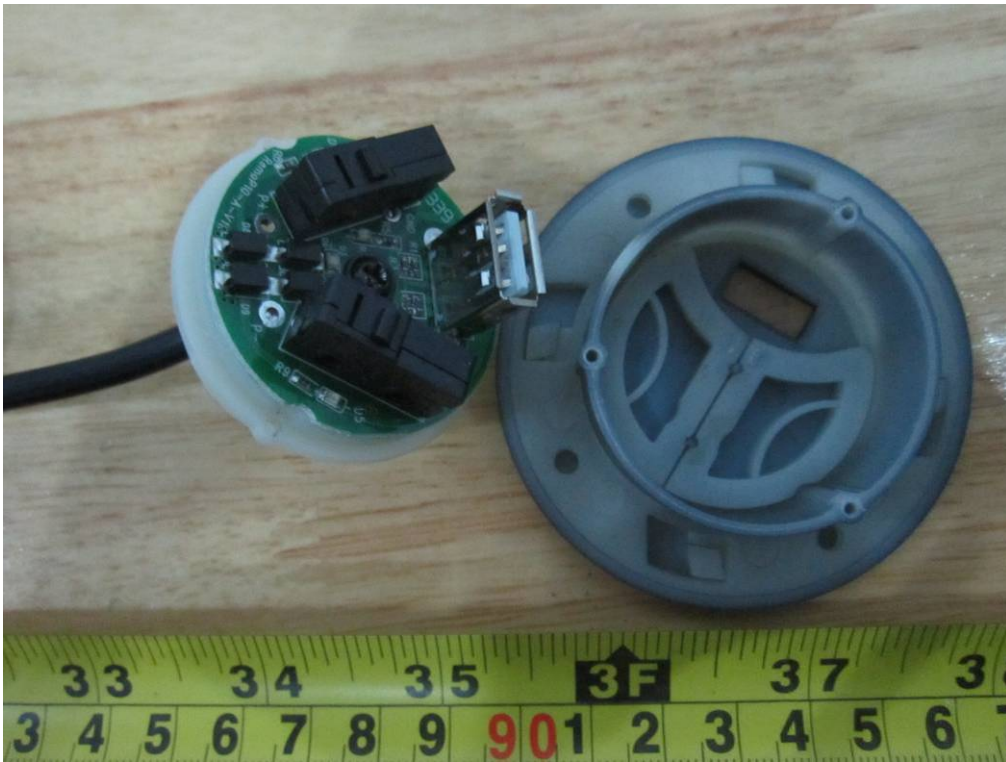
Adapter- Uncover View



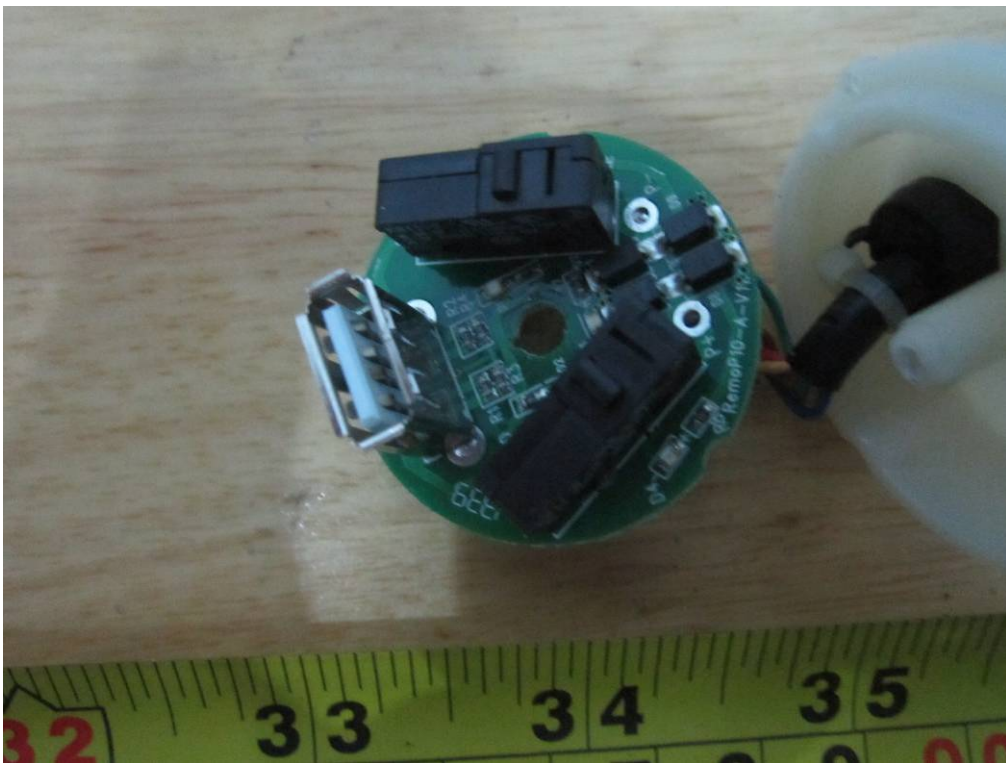
Adapter– Main Board Top View



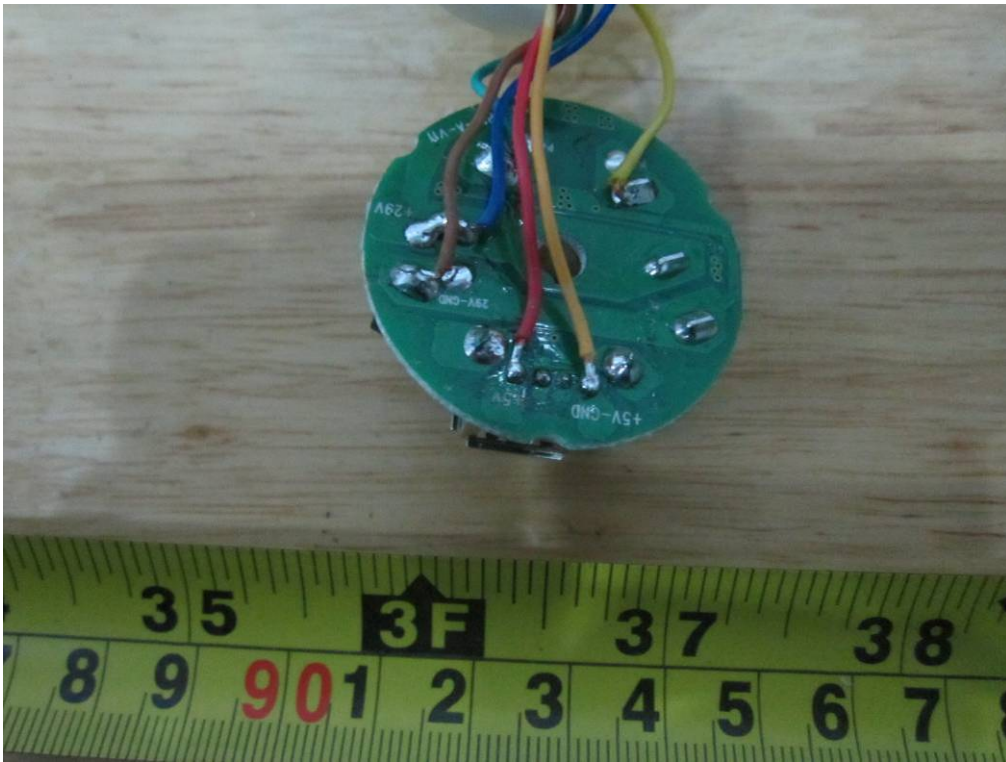
Adapter – Main Board Bottom View



RemoP20-Switch Box Uncover View



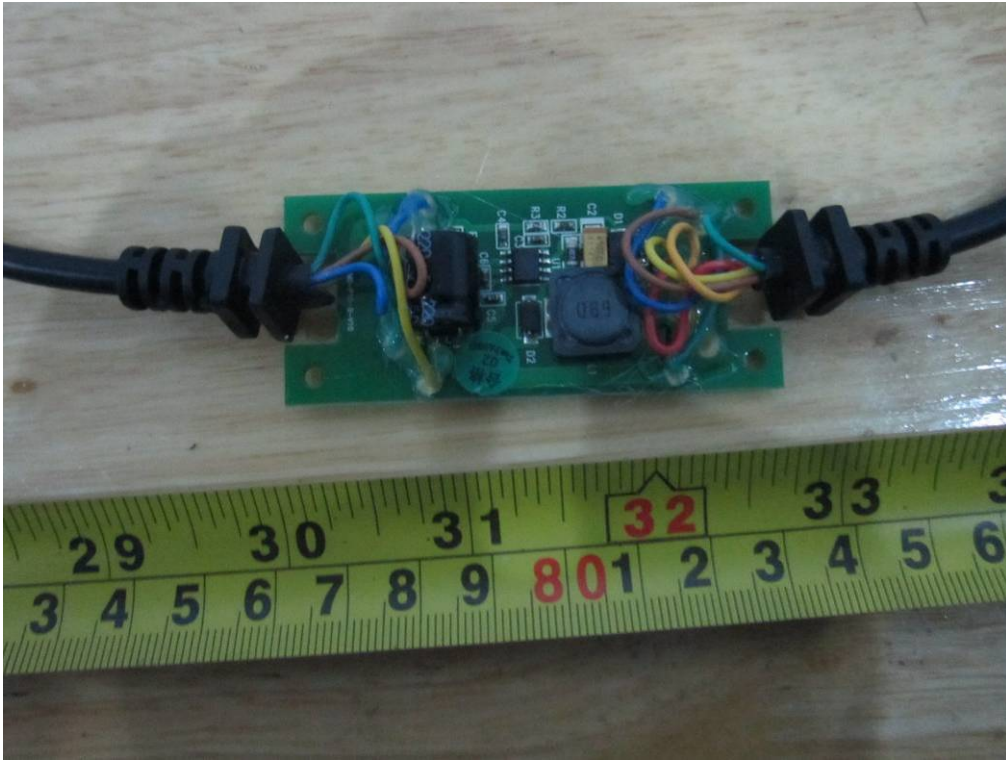
RemoP20-Switch Board Top View



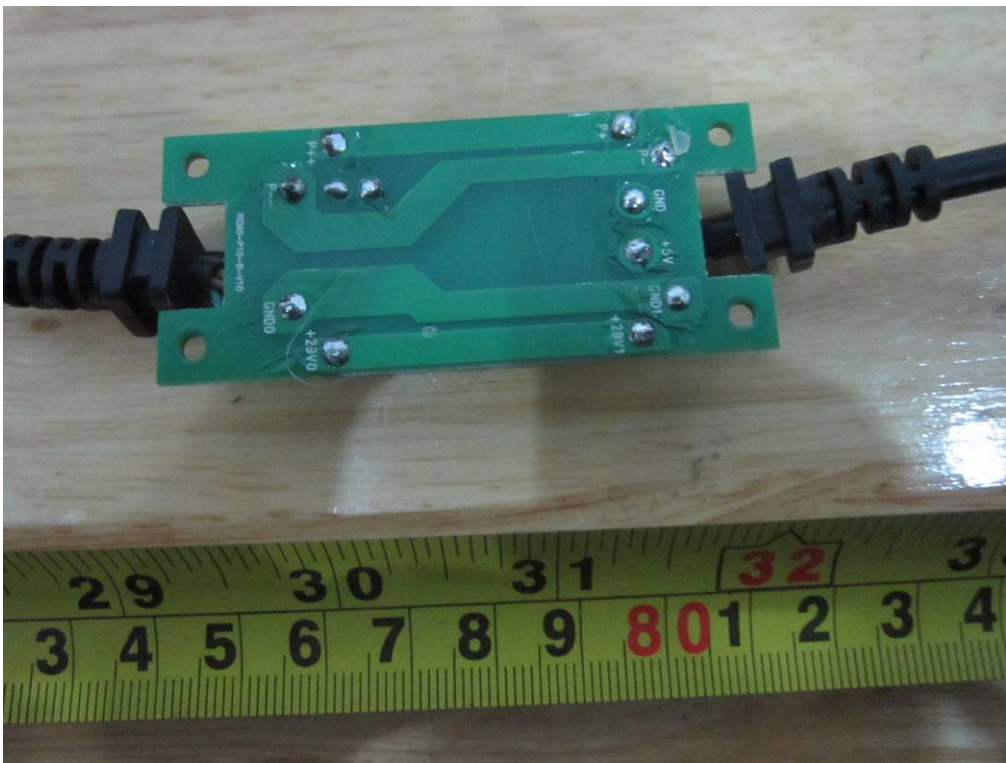
RemoP20-Switch Board Bottom View



RemoP20-Control Box Uncover View



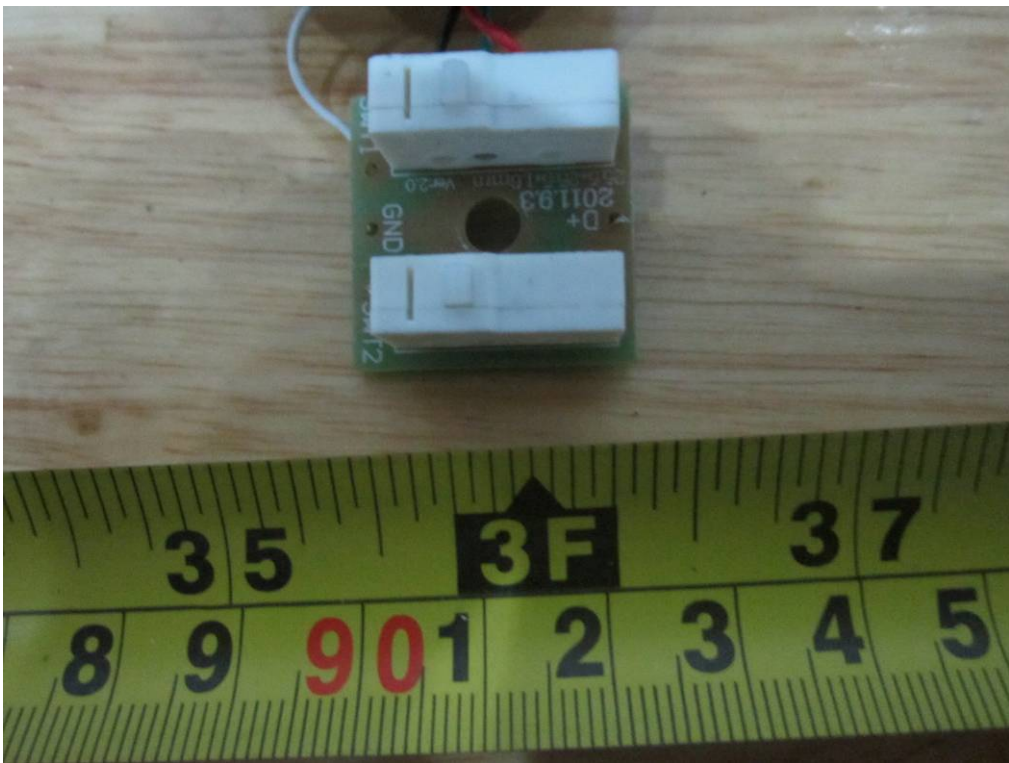
RemoP20-Control Board Top View



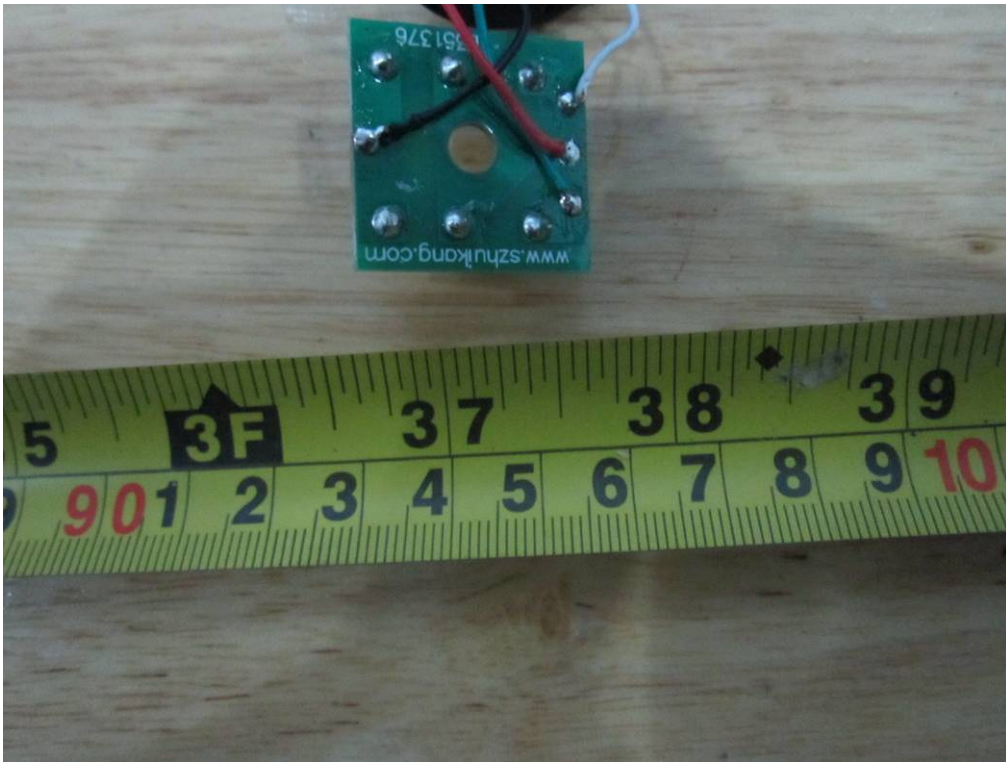
RemoP20 - Control Board Bottom View



HX35- UncoverView



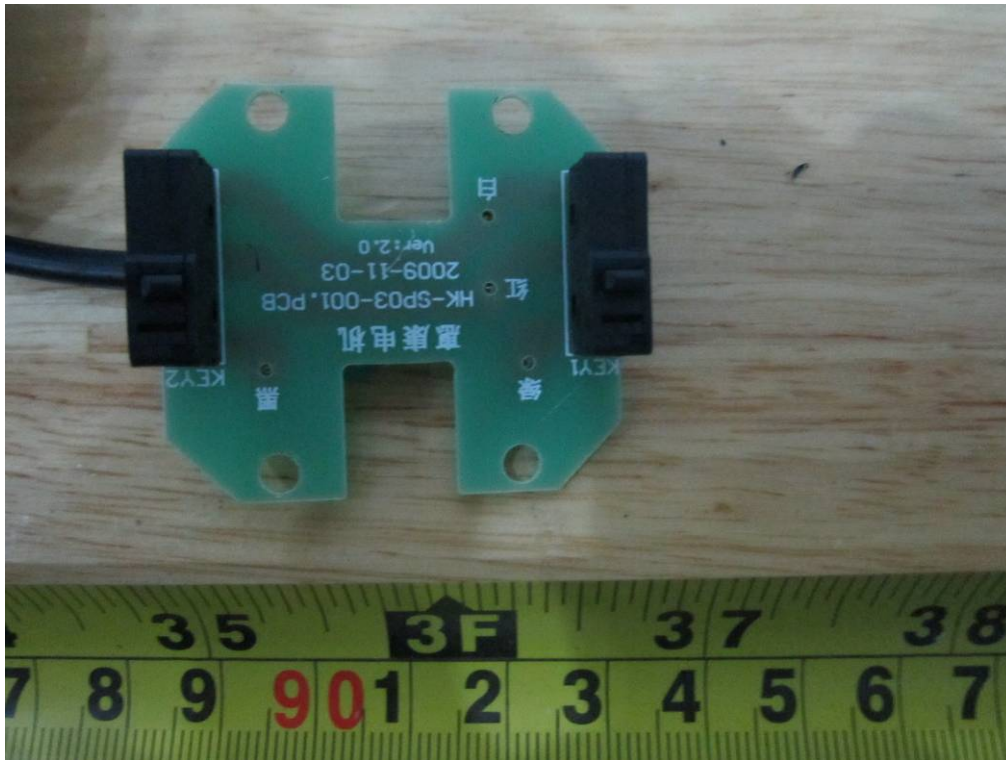
HX35 - Main Board Top View



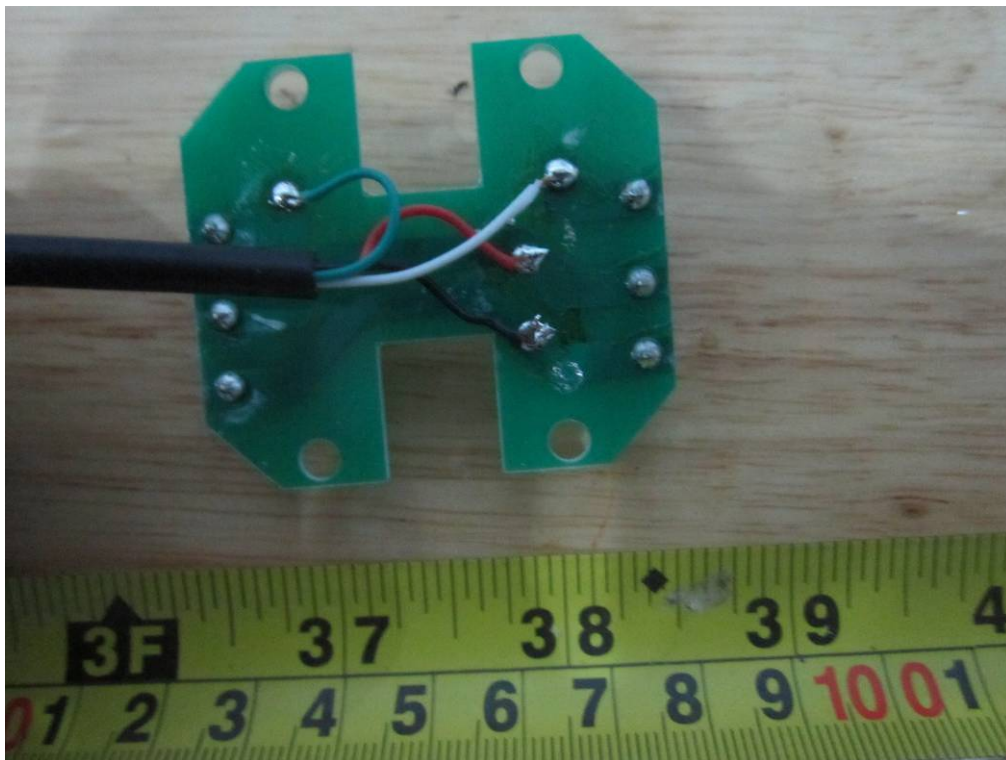
HX35- Main Board Bottom View



HX29- Uncover View



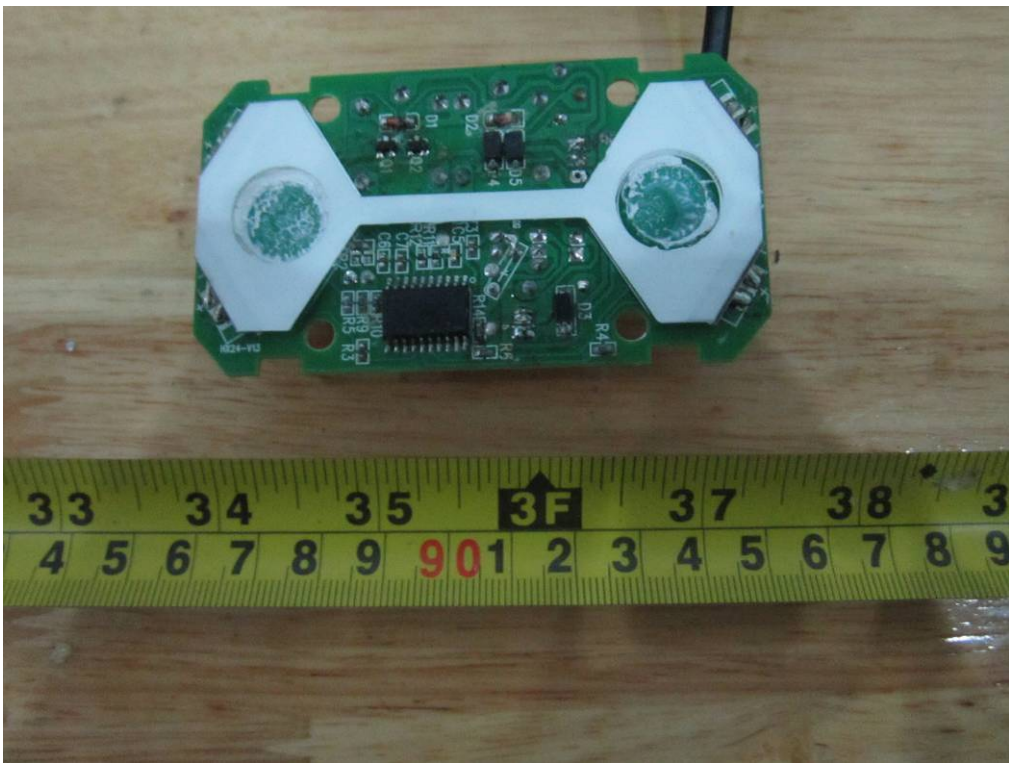
HX29– Main Board Top View



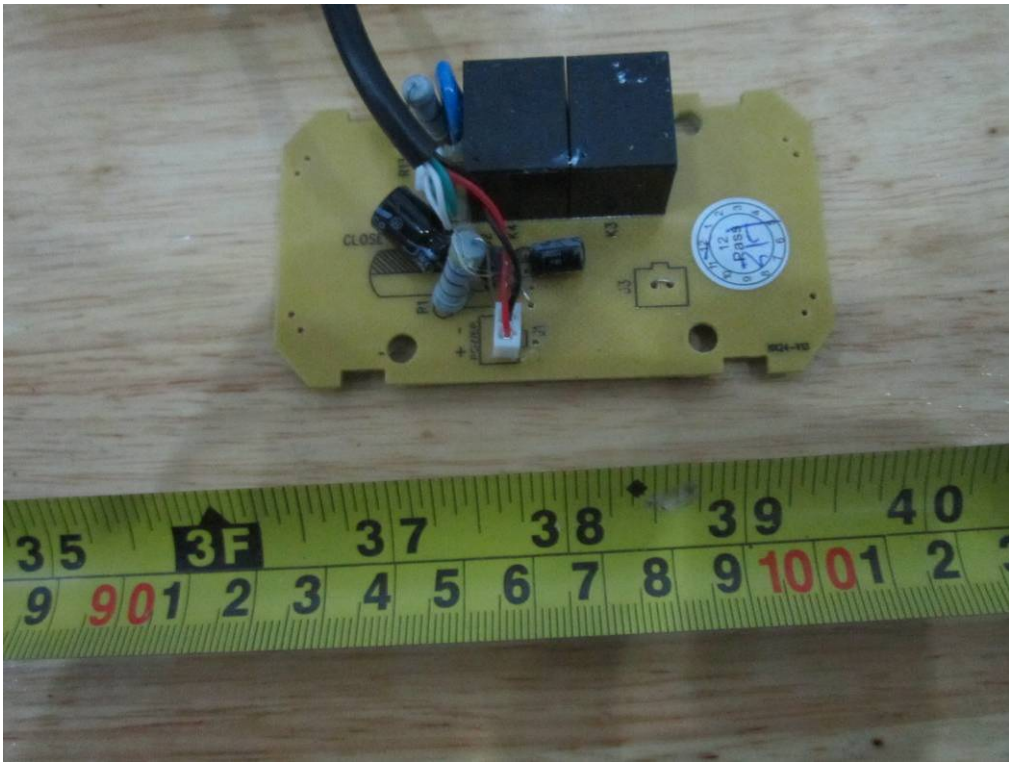
HX29– Main Board Bottom View



HX24- Uncover View



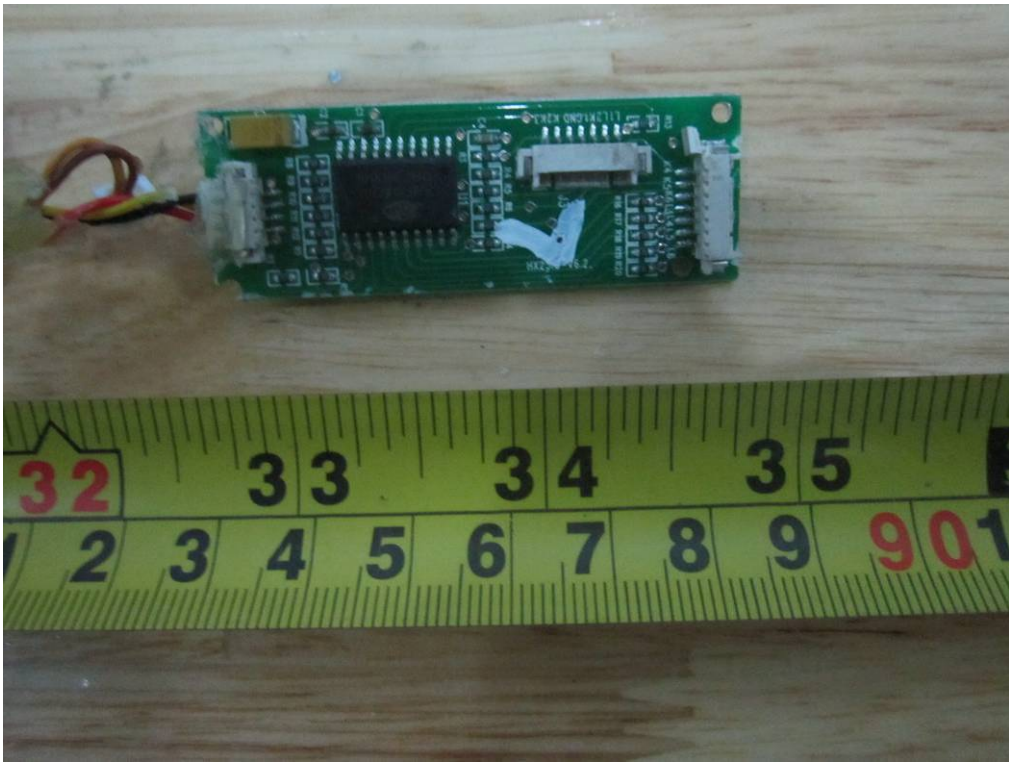
HX24- Main Board Top View



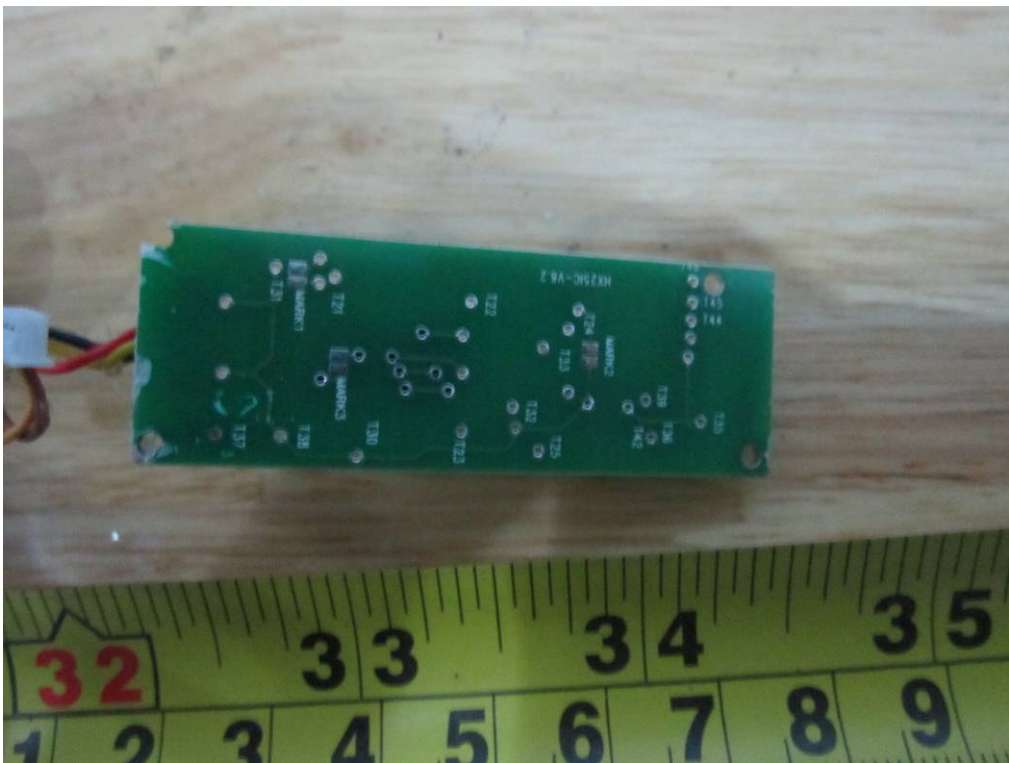
HX24- Main Board Bottom View



HX36H- Uncover View



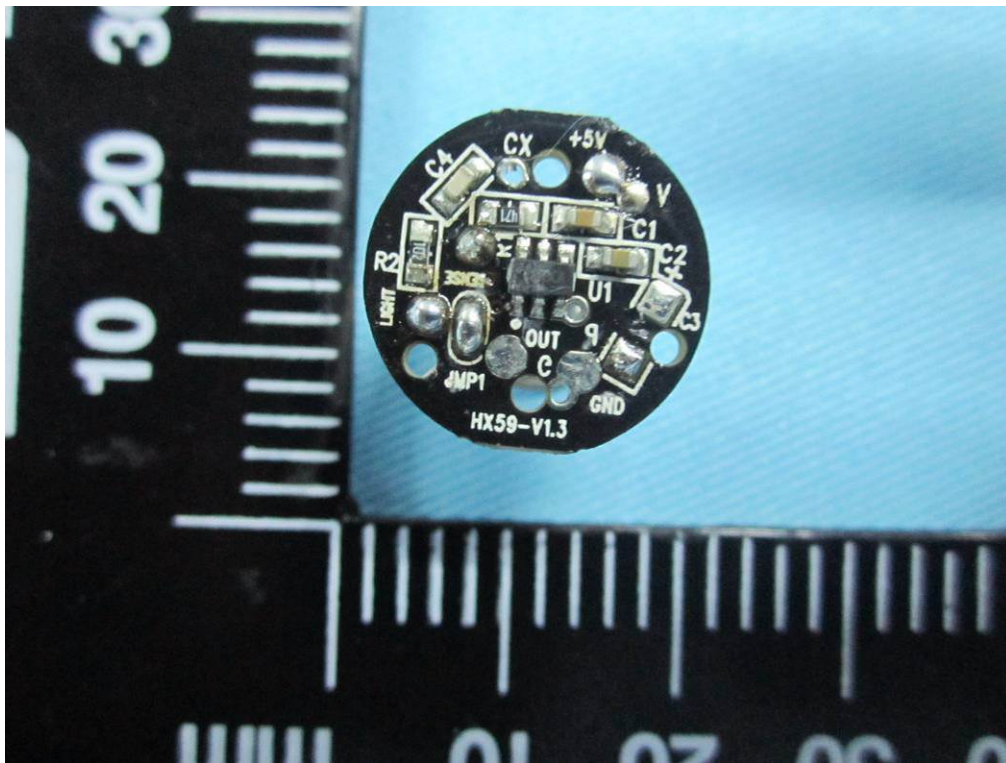
iCtrl-HX36H– Main Board Top View



HX36H– Main Board Bottom View



Remo Button- Uncover View



Remo Button- Main Board Top View

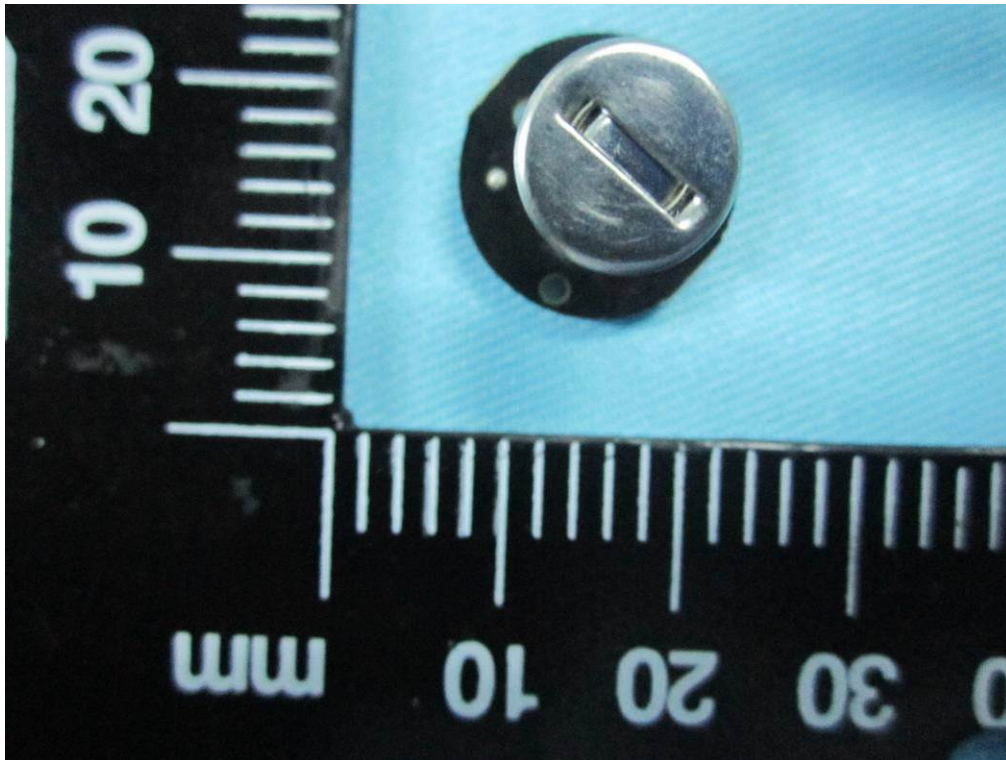


SIEMIC, INC.

Accessing global markets

Title: RF Test Report for Bluetooth Control System
Main Model: iCtrl.M1P58
Main Model: iCtrl.M1P5, iCtrl.M1P8, iCtrl.M1RP5, iCtrl.M1RP8
To: FCC 15.247: 2013, ANSI C63.4: 2009

Report No: 13020926-FCC-R1
Issue Date: May 19, 2014
Page: 90 of 104
www.siemec.com.cn



Remo Button– Main Board Bottom View

Annex B.iii. Photograph 3: EUT External Photo



iCtrl.M1P5-2– Top View



iCtrl.M1P8-2– Top View



iCtrl.M1RP5-2- Top View



iCtrl.M1RP8-2- Top View

Annex B.iv. Photograph 4: EUT Internal Photo



iCtrl.M1P5-2– Uncover View



iCtrl.M1P8-2– Uncover View



iCtrl.M1RP5-2– Uncover View

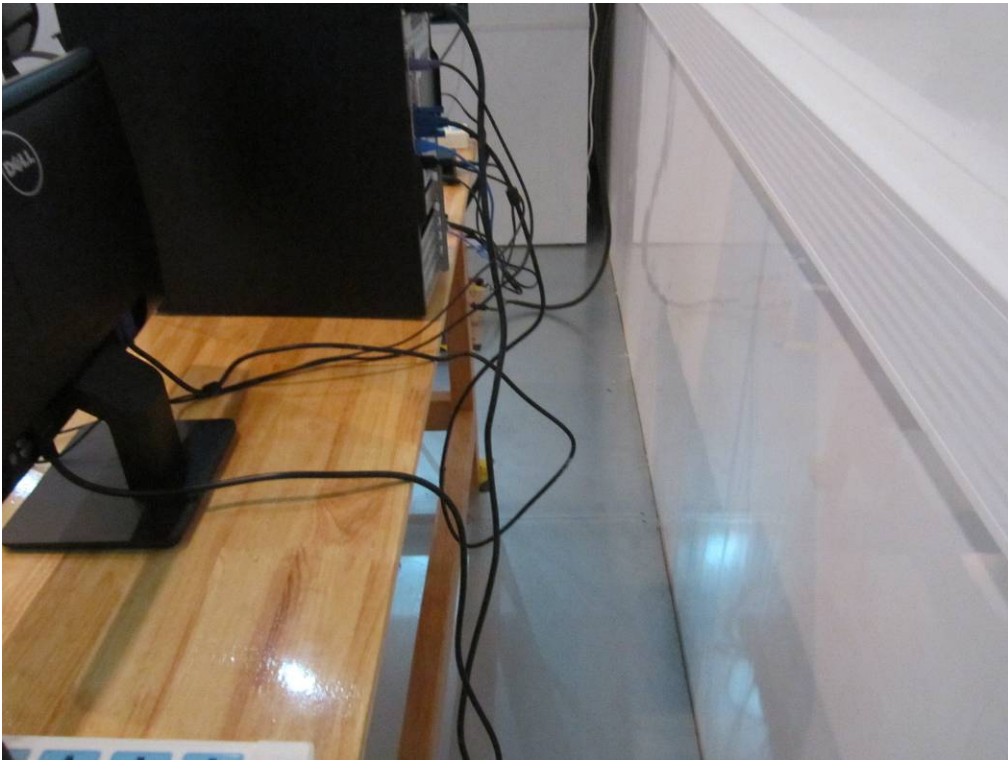


iCtrl.M1RP8-2– Uncover View

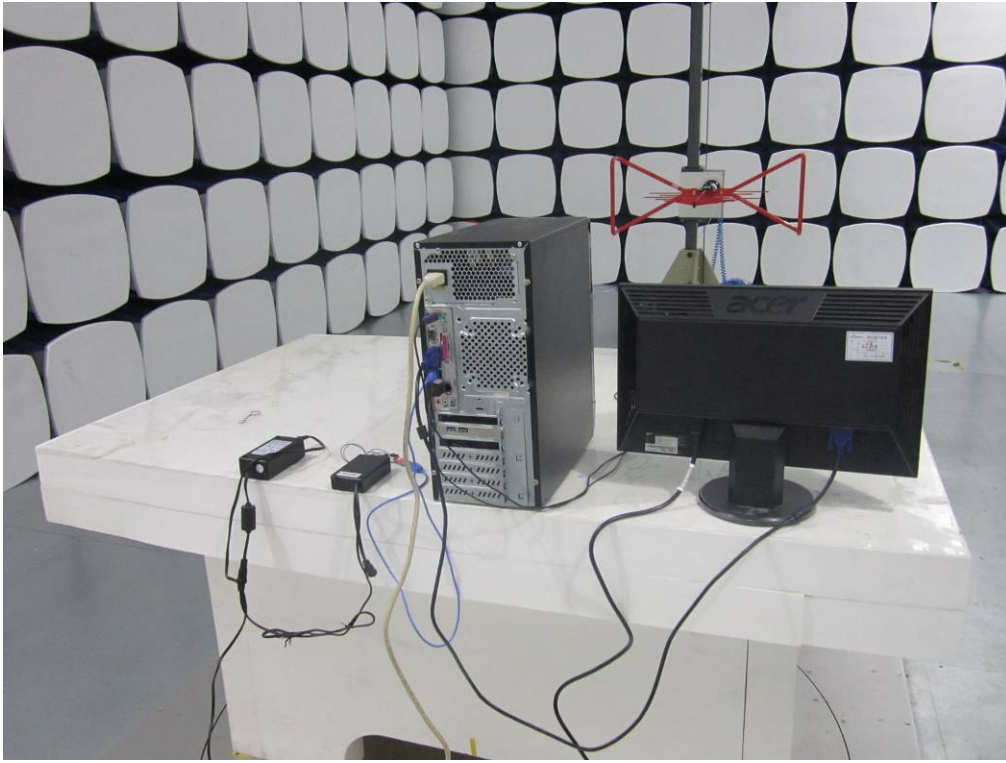
Annex B.iii. Photograph 3: Test Setup Photo



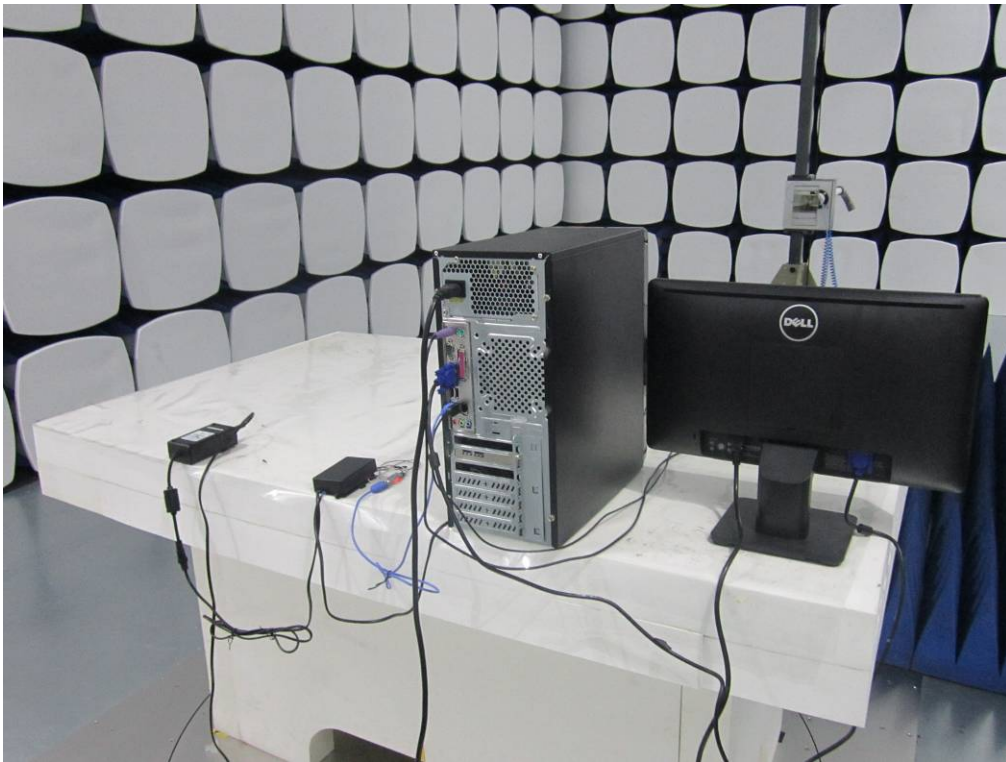
Conducted Emissions Test Setup Front View



Conducted Emissions Test Setup Side View



Radiated Spurious Emissions Test Setup Below 1GHz - Front View



Radiated Spurious Emissions Test Setup Above 1GHz - Front View

Annex C. TEST SETUP AND SUPPORTING EQUIPMENT

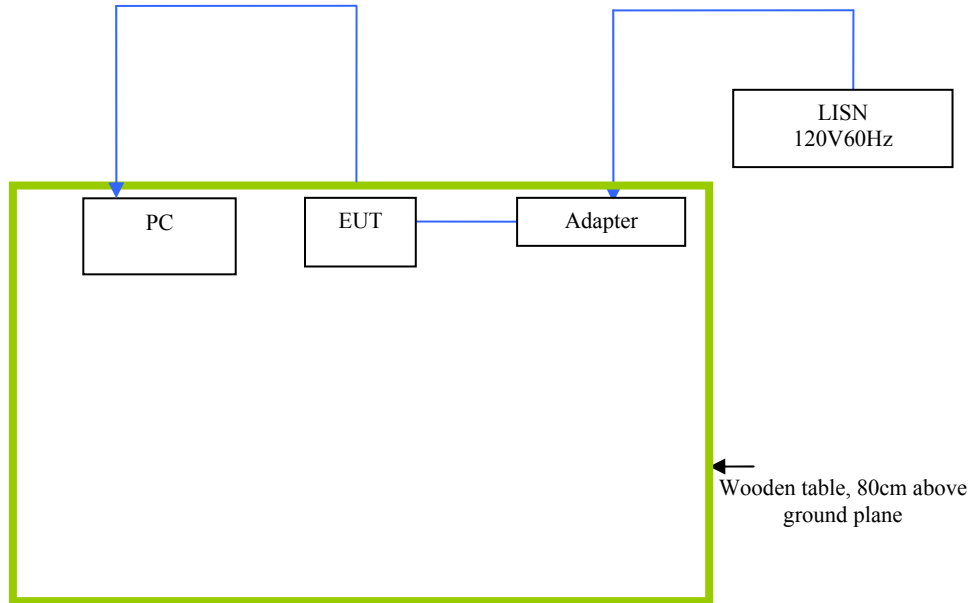
EUT TEST CONDITIONS

Annex C. i. SUPPORTING EQUIPMENT DESCRIPTION

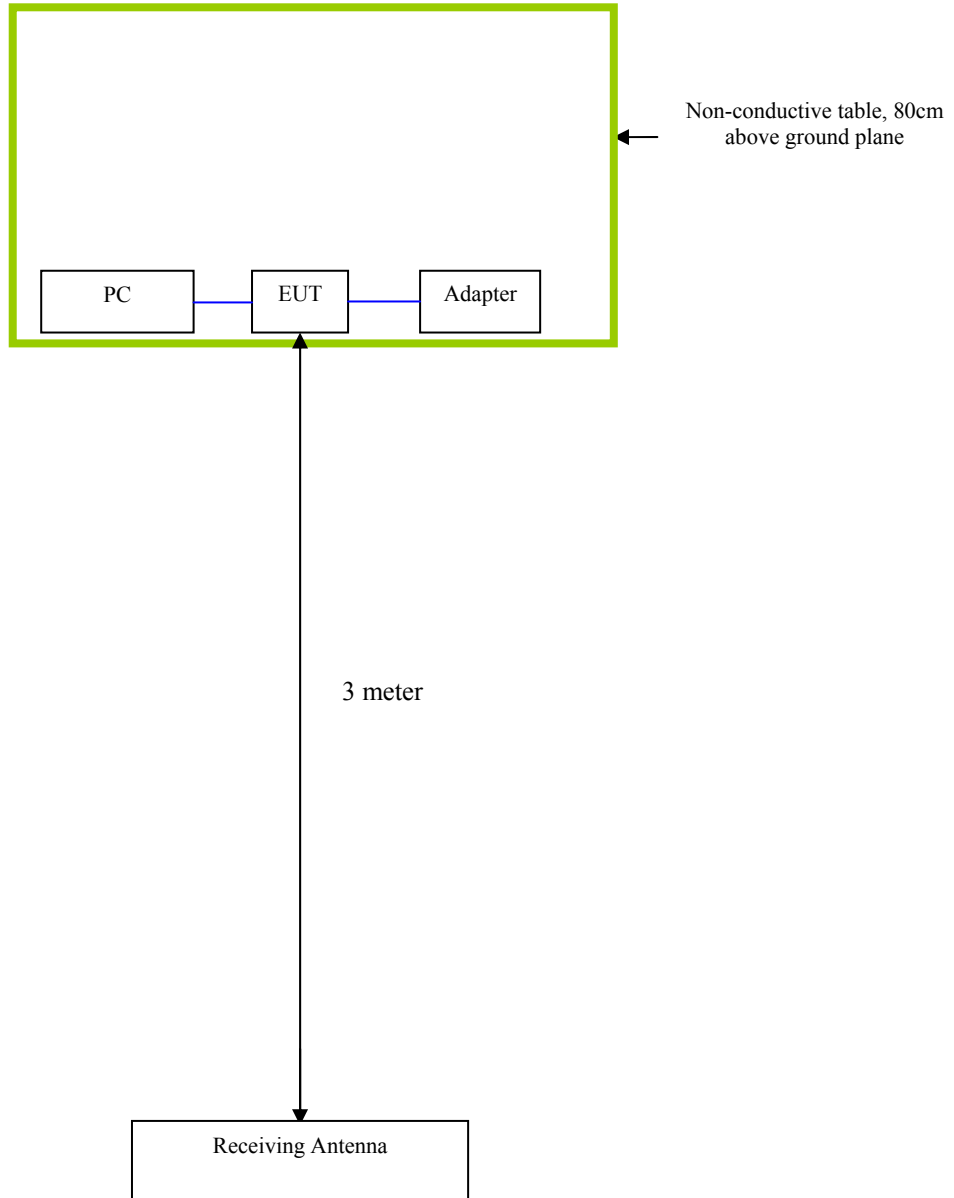
The following is a description of supporting equipment and details of cables used with the EUT.

Manufacturer	Equipment Description (Including Brand Name)	Model	Calibration Date	Calibration Due Date
Dell	PC	CIC-PC	N/A	N/A

Block Configuration Diagram for AC Line Conducted Emissions



Block Configuration Diagram for Radiated Emissions



Annex C. ii. EUT OPERATING CONDITIONS

The following is the description of how the EUT is exercised during testing.

Test	Description Of Operation
Emissions Testing	The EUT was continuously transmitting to stimulate the worst case.



SIEMIC, Inc.

Accessing global markets

Title: RF Test Report for Bluetooth Control System
Main Model: iCtrl.M1P58
Main Model: iCtrl.M1P5, iCtrl.M1P8, iCtrl.M1RP5, iCtrl.M1RP8
To: FCC 15.247: 2013, ANSI C63.4: 2009

Report No: 13020926-FCC-R1
Issue Date: May 19, 2014
Page: 101 of 104
www.siemec.com.cn

Annex D. USER MANUAL / BLOCK DIAGRAM / SCHEMATICS / PART LIST

Please see attachment

Annex E. DECLARATION OF SIMILARITY

eMoMo

Declaration Letter

We
eMoMo Technology CO. LTD.
Of

4th. Floor,
Yong He Building,
Tai Wan Industrial Park,
Shi Yan, Bao'an District
Shenzhen, China, 518131

hereby state that

Product : Bluetooth Control System

System Number :iCtrl.M1P58; iCtrl.M1P5; iCtrl.M1P8; iCtrl.M1RP5; iCtrl.M1RP8;

iCtrl.M1P58, iCtrl.M1P5, iCtrl.M1P8,iCtrl.M1RP5 and iCtrl.M1RP8 consist of some or all the following equipments:

Bluetooth Control System				
System Number	Including Components			
	Power supply	Control box	Operation devices (Option)	Actuators (Option)
iCtrl.M1P58	ZBHWX-A290020-A	iCtrl.M1P58-2	Remo Button	recline actuator
iCtrl.M1P5		iCtrl.M1P5-2	HX36H	
iCtrl.M1P8		iCtrl.M1P8-2	HX24	lift actuator
iCtrl.M1RP5		iCtrl.M1RP5-2	HX29	
iCtrl.M1RP8		iCtrl.M1RP8-2	HX35 RemoP20	

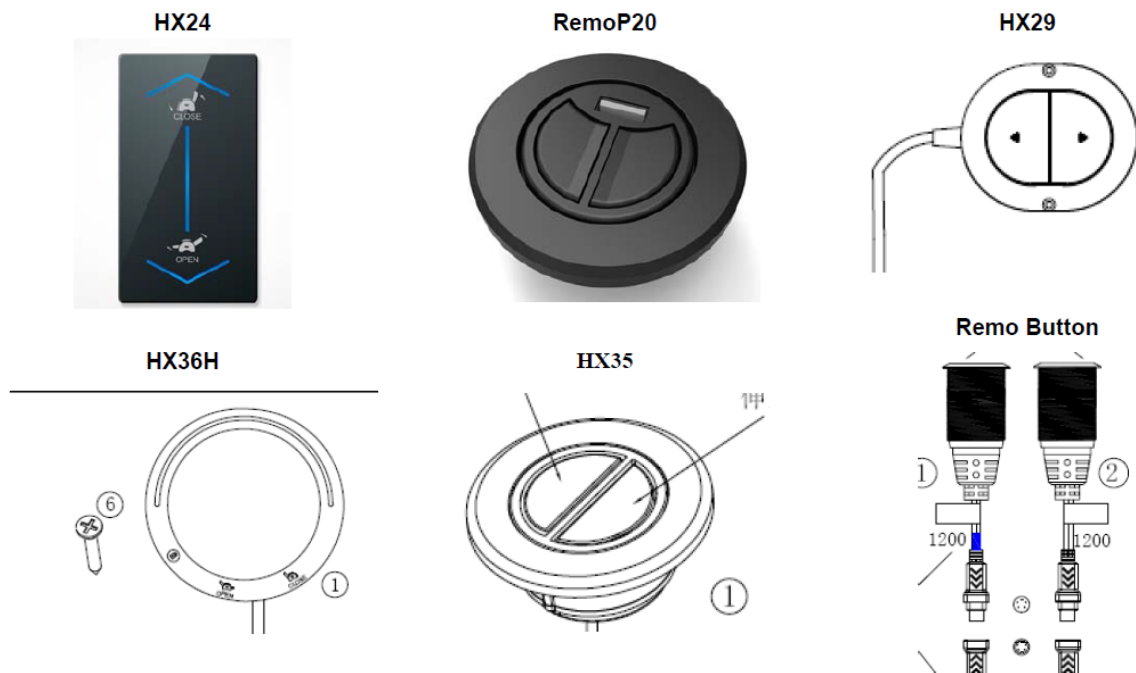
All differences is just interface ports and accessory.The RF circuitry , parameter , Antenna remains the same.

The differences of these models are as follows:

	one 2pin female which is supporting the power of actuator	One 2pin male which connect with the power supply	one 5pin male which use to receive the signal from actuator	one 8pin female which connect with Remo Button, HX36H	One 5pin female which connect with HX24;HX29;HX35, RemoP20	Description
iCtrl.M1P58-2						Cabels are different. 1. 2 pin female plug and 5 pin male plus connect reline actuator or lift actuator, even connect nothing; 2. 8 pin female connect Operation devices (Remo Button or HX36H), even connect nothing; 3. 5 pin female connect Operation devices (HX24, HX29, HX35 or RemoP20), even connect nothing.
iCtrl.M1P5-2				×		
iCtrl.M1P8-2					×	
iCtrl.M1RP5-2			×	×		
iCtrl.M1RP8-2			×	×	×	

Note: '×', this symbol indicates that excluding the above items.

Attach: Photos of Operation devices (6 models is optional.)





SIEMIC, INC.

Accessing global markets

Title: RF Test Report for Bluetooth Control System
Main Model: iCtrl.M1P58
Main Model: iCtrl.M1P5, iCtrl.M1P8, iCtrl.M1RP5, iCtrl.M1RP8
To: FCC 15.247: 2013, ANSI C63.4: 2009

Report No: 13020926-FCC-R1
Issue Date: May 19, 2014
Page: 104 of 104
www.siemec.com.cn

Sincerely,

E-mail: lance@emomo.tech.com

Phone: (+86) 755 27643116-825

Fax: (+86) 755 27643115

Address:

4th. Floor,

Yong He Building,

Tai Wan Industrial Park,

Shi Yan, Bao'an District

Shenzhen, China, 518131

Client's Signature: Rosary Tang

Name/Surname:

Position/Title: vice president

Issue Date: Oct 12, 2013